



---

# **Petroshare Corporation**

## **SURFACE POST JOB REPORT**

Shook 3-10-2NAH 05-001-09972  
S:3 T:1S R:67W Adams CO

CallSheet #: 733  
Proposal #: 13166



**SURFACE Post Job Report**

**Attention:** Mr. Bill Lloyd | (303) 500-1160 | blloyd@petroshare.com  
Petroshare Corporation  
9635 Maroon Circle, Ste 400 | Englewood, CO 80112

---

Dear Mr. Lloyd,

Thank you for the opportunity to provide cementing services on this well. BJ Services strives to achieve complete customer satisfaction. If you have any questions regarding the services or data provided, please contact BJ Services at any time.

Sincerely,

**Nick Stille**

Technical Specialist - I | (307) 286-0815 | nick.stille@bjservices.com

**Field Office**      1716 East Allison Rd., Cheyenne WY, 82007  
Phone: (307) 638-5585

**Sales Office**      475 17th St. Suite 460 Denver Co., 80202  
Phone: (303) 296-1158



## Table of Contents

1 Job Details & Summary .....	3
1.1 Geometry .....	3
1.2 Equipment / People .....	3
1.3 Timing .....	3
1.4 General Job Information .....	3
1.5 Job Details .....	3
1.6 Job Details (cont.) .....	3
1.7 Circulation .....	3
1.8 Job Execution Information .....	4
1.9 Job Fluid Details .....	4
2 Job Logs .....	5
3 Water Analysis .....	6
4 Pump Diagrams .....	6

## 1 Job Details & Summary

### 1.1 Geometry

Type	Function	OD (in)	ID (in)	Weight (lb/ft)	Thread	Top (ft)	Bottom (ft)	Excess (%)
Casing	Inner	9.625	8.921	36	LTC	0	1820	0
Casing	Outer	16	15.25	65	n/a	0	40	0
Open Hole	Outer	n/a	13.5	n/a	n/a	40	1821	15

### 1.2 Equipment / People

Unit Type	Unit	Employee #1	Mileage
Light Duty Pickups	3	Dewit, Eric	176
Cement Pump	PPC11250	Scott, Matthew	176
Bulk Trailer	508	Mathews, Travis	176
Bulk Trailer	509	Cornett, Jesse	176

### 1.3 Timing

Event	Date/Time
Call Out	4/18/2017 18:00
Depart Facility	4/18/2017 19:00
On Location	4/18/2017 21:00
Rig Up Iron	4/18/2017 22:30
Job Started	4/18/2017 23:25
Job Completed	4/19/2017 01:02
Rig Down Iron	4/19/2017 01:20
Depart Location	4/19/2017 02:00

### 1.4 General Job Information

Metrics	Value
Well Fluid Density	8.4 lb/gal
Well Fluid Type	Water
Rig Circulation Vol	150 bbls
Rig Circulation Time	0.5 hours
Calculated Displacement	137.4 bbls
Actual Displacement	137.4 bbls
Total Spacer to Surface	20 bbls
Total CMT to Surface	7 bbls
Well Topped Out	No

### 1.5 Job Details

Metrics	Value
Flare Prior to Job	No
Flare During Job	No
Flare at End of Job	No
Well Full Prior to Job	Yes
Well Fluid Density Into Well	8.4 lb/gal
Well Fluid Density Out of Well	8.4 lb/gal

### 1.6 Job Details (cont.)

Metrics	Value
BHCT	95 °F
BHST	120 °F

### 1.7 Circulation

Lost Circulation Experienced
No



### 1.8 Job Execution Information

Job	Fluid	Product	Function	Density (lb/gal)	Yield (ft <sup>3</sup> /sk)	Water Rq. (gal/sk)	Water Rq. (gal/bbl)	Volume (sks)	Volume (bbl)	Top (ft)
1	1	Water	Flush	8.33			42.00		20.00	0
1	2	ALTCem S100-12	Lead	12.00	2.53	14.85		293.00	131.84	0
1	3	ALTCem S100-12	Tail	12.50	2.22	12.58		135.00	53.46	1300
1	4	Water	DisplacementFinal	8.33			42.00		136.00	0

### 1.9 Job Fluid Details

Job	Fluid	Type	Fluid	Product	Function	Conc.	Uom
1	2	Lead	ALTCem S100-12	AC3-10	Cement	100.00	%
1	2	Lead	ALTCem S100-12	ACL-10	Accelerator	2.00	lb/sk
1	2	Lead	ALTCem S100-12	ACL-20	Accelerator	5.00	%BWOB
1	2	Lead	ALTCem S100-12	ADF-11	Defoamer	0.30	%BWOB
1	2	Lead	ALTCem S100-12	ALC-10	LostCirculation	0.13	lb/sk
1	2	Lead	ALTCem S100-12	AXE-30	Extender	2.00	lb/sk
1	3	Tail	ALTCem S100-12	AC3-10	Cement	100.00	%
1	3	Tail	ALTCem S100-12	ACL-10	Accelerator	2.00	lb/sk
1	3	Tail	ALTCem S100-12	ACL-20	Accelerator	5.00	%BWOB
1	3	Tail	ALTCem S100-12	ADF-11	Defoamer	0.30	%BWOB
1	3	Tail	ALTCem S100-12	ALC-10	LostCirculation	0.13	lb/sk
1	3	Tail	ALTCem S100-12	AXE-30	Extender	2.00	lb/sk

## 2 Job Logs

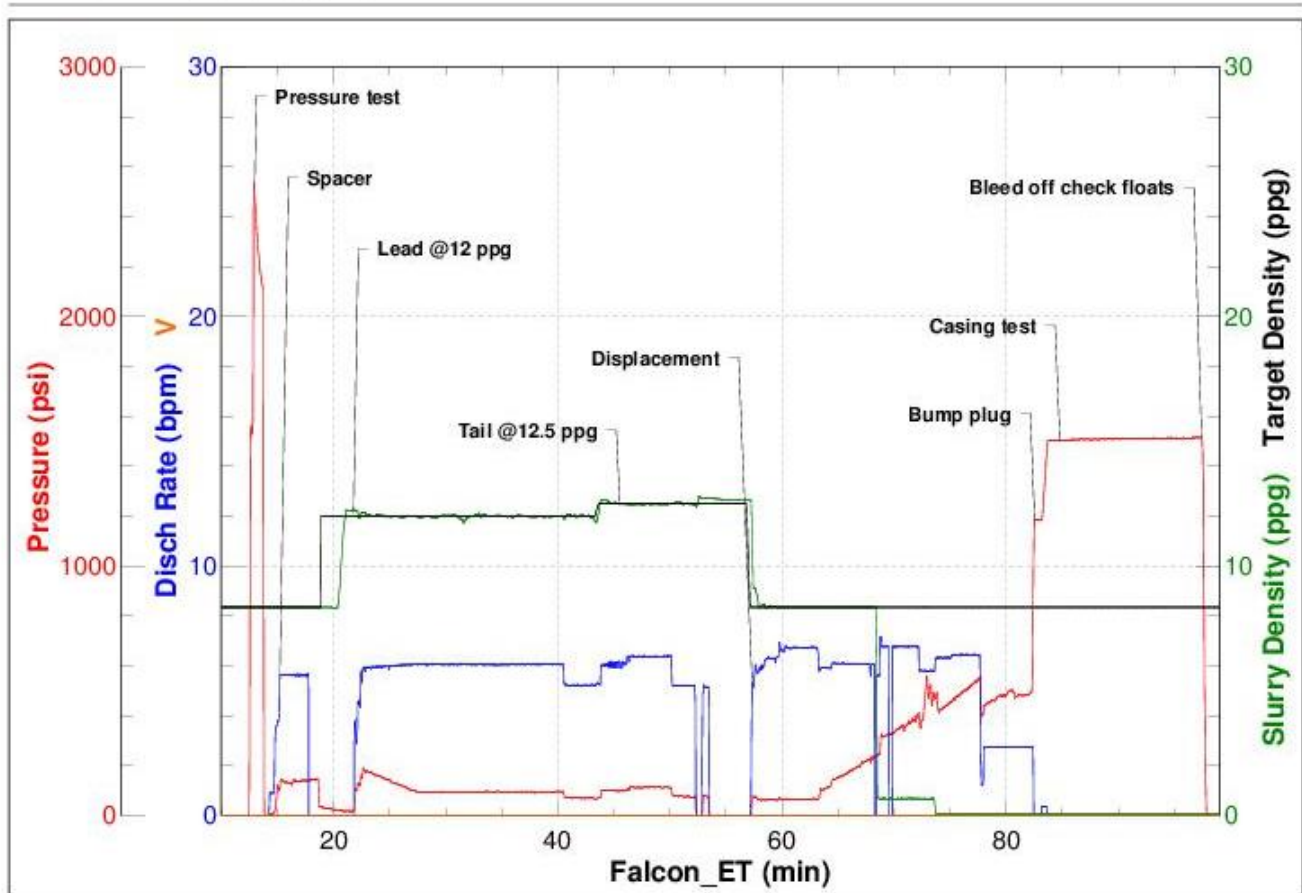
Line	Event	Date (MM/DD/YY)	Time (HH:MM)	Density (lb/gal)	Pump Rate (bpm)	Pump Volume (bbls)	Pipe Pressure (psi)	Comment
1	Customer call out	4/18/2018	18:00					Customer call with an RTS of 22:00
2	Leave yard	4/18/2017	19:00					Bulk trucks leave yard
3	Arrive on location	4/18/2017	21:30					Bulk trucks arrive on location
4	Spot trucks	4/18/2017	22:20					Spot trucks
5	Safety meeting	4/18/2017	22:30					Pre-rig up safety meeting
6	Rig up	4/18/2017	22:35					Rig up bulk, water, and high pressure line
7	Safety meeting	4/18/2017	22:55					Pre-job safety meeting with company man, and rig crew
8	rig up	4/18/2017	23:05					Rig up head
9	Load lines	4/18/2017	23:25	8.34	3.9	3	48	Load pumps and lines, and send bottom plug
10	Pressure test	4/18/2017	23:35	8.34	0	0	2539	Pressure test pumps and lines
11	Pump spacer	4/18/2017	23:37	8.34	5.7	20	141	Pump fresh water + dye spacer
12	lead cement	4/18/2017	23:43	12	5.9	131	171	Pump 293 sacks of lead cement @12 ppg (Yield - 2.53, Mix water - 14.58)
13	Tail cement	4/19/2017	00:07	12.5	6	53	100	Pump 135 sacks of tail cement @12.5 ppg (Yield - 2.22, Mix water - 12.58)
14	Drop top plug	4/19/2017	00:19					Shut down, and drop top plug
15	Displacement	4/19/2017	00:20	8.34	6.6	0	64	Send top plug, and start fresh water displacement
16	Displacement	4/19/2017	00:29	8.34	6	50	180	Fresh water displacement
17	Spacer to surface	4/19/2017	00:39	8.34	6.3	110	515	Start getting spacer to surface
18	Drop rate	4/19/2017	00:40	8.34	2.5	120	410	Drop pump rate
19	Cement to surface	4/19/2017	00:44	8.34	2.5	130	490	Start getting good cement to surface
20	Land plug	4/19/2017	00:46	8.34	2.5	137	1183	Land plug @511 psi, Bump up to 1183 psi
21	Casing test	4/19/2017	00:47	8.34	0	0	1504	Start casing test
22	Check floats	4/19/2017	01:02	8.34	0	0	0	Bleed off check floats (floats held) 1 bbl back
23	Safety meeting	4/19/2017	01:20					Pre-rig down safety meeting

### 3 Water Analysis

Metrics	Value	Recommended
Water Source	Rig Tank	
Temperature	51 °F	50-80 °F
pH Level	7	5.5-8.5
Chlorides	0 mg/L	0-3000 mg/L
Total Alkalinity	400	0-1000
Total Hardness	<250 mg/L	0-500 mg/L
Carbonates	0 mg/L	0-100 mg/L
Sulfates	<500 mg/L	0-1500 mg/L
Potassium	200 mg/L	0-3000 mg/L
Iron	0 mg/L	0-300 mg/L

### 4 Pump Diagrams

Job Number: 733  
Customer: Petro Share  
Well Name: Shook 3-10-2NAH



Job Start: Tuesday, April 18, 2017