



---

# **Petroshare Corporation**

## **SURFACE POST JOB REPORT**

**Shook 3-10-4CDH 05-001-09974**  
**S:3 T:1S R:67W Adams CO**

CallSheet #: 719  
Proposal #: 13162



**SURFACE Post Job Report**

**Attention:** Mr. Bill Lloyd | (303) 500-1160 | blloyd@petroshare.com  
Petroshare Corporation  
9635 Maroon Circle, Ste 400 | Englewood, CO 80112

---

Dear Mr. Lloyd,

Thank you for the opportunity to provide cementing services on this well. BJ Services strives to achieve complete customer satisfaction. If you have any questions regarding the services or data provided, please contact BJ Services at any time.

Sincerely,

**Zen Keith**

Technical Specialist-II | (307) 757-7178 | Zen.Keith@bjservices.com

**Field Office**      1716 East Allison Rd., Cheyenne WY, 82007  
Phone: (307) 638-5585

**Sales Office**      475 17th St. Suite 460 Denver Co., 80202  
Phone: (303) 296-1158



Table of Contents

1 Job Details & Summary ..... 3

    1.1 Geometry ..... 3

    1.2 Equipment / People ..... 3

    1.3 Timing ..... 3

    1.4 General Job Information ..... 3

    1.5 Job Details ..... 3

    1.6 Job Details (cont.) ..... 3

    1.7 Circulation ..... 3

    1.8 Job Execution Information ..... 4

    1.9 Job Fluid Details ..... 4

2 Job Logs ..... 5

3 Water Analysis ..... 6

4 Pump Diagrams ..... 7

## 1 Job Details & Summary

### 1.1 Geometry

Type	Function	OD (in)	ID (in)	Weight (lb/ft)	Thread	Top (ft)	Bottom (ft)	Excess (%)
Casing	Inner	9.625	8.921	36	LTC	0	1820	0
Casing	Outer	16	15.25	65	n/a	0	40	0
Open Hole	Outer	n/a	13.5	n/a	n/a	40	1820	15

### 1.2 Equipment / People

Unit Type	Unit	Employee #1	Mileage
Bulk Trailer	508	Mellon, Zacahria	180
Bulk Trailer	509		180
Cement Pump	PPC11250	Scott, Matthew	180
Light Duty Pickups	3	Dewit, Eric	180

### 1.3 Timing

Event	Date/Time
Call Out	4/14/2017 22:30
Depart Facility	4/14/2017 22:45
On Location	4/14/2017 23:30
Rig Up Iron	4/15/2017 04:10
Job Started	4/15/2017 04:51
Job Completed	4/15/2017 06:29
Rig Down Iron	4/15/2017 06:50
Depart Location	4/15/2017 07:45

### 1.4 General Job Information

Metrics	Value
Well Fluid Density	8.4 lb/gal
Well Fluid Type	Water
Rig Circulation Vol	150 bbls
Rig Circulation Time	0.5 hours
Calculated Displacement	137.4 bbls
Actual Displacement	137.4 bbls
Total Spacer to Surface	20 bbls
Total CMT to Surface	11 bbls
Well Topped Out	No
Top Out Volume	0 bbls

### 1.5 Job Details

Metrics	Value
Flare Prior to Job	No
Flare During Job	No
Flare at End of Job	No
Well Full Prior to Job	Yes
Well Fluid Density Into Well	8.4 lb/gal
Well Fluid Density Out of Well	8.4 lb/gal

### 1.6 Job Details (cont.)

Metrics	Value
BHCT	95 °F
BHST	120 °F

### 1.7 Circulation

Lost Circulation Experienced
No



### 1.8 Job Execution Information

Job	Fluid	Product	Function	Density (lb/gal)	Yield (ft <sup>3</sup> /sk)	Water Rq. (gal/sk)	Water Rq. (gal/bbl)	Volume (sks)	Volume (bbl)	Top (ft)
1	1	Water	Flush	8.33			42.00		20.00	0
1	2	ALTCem S100-12	Lead	12.00	2.53	14.85		293.00	131.84	0
1	3	ALTCem S100-12	Tail	12.50	2.22	12.58		135.00	53.46	1300
1	4	Water	DisplacementFinal	8.33			42.00		136.00	0

### 1.9 Job Fluid Details

Job	Fluid	Type	Fluid	Product	Function	Conc.	Uom
1	2	Lead	ALTCem S100-12	AC3-10	Cement	100.00	%
1	2	Lead	ALTCem S100-12	ACL-10	Accelerator	2.00	lb/sk
1	2	Lead	ALTCem S100-12	ACL-20	Accelerator	5.00	%BWOB
1	2	Lead	ALTCem S100-12	ADF-11	Defoamer	0.30	%BWOB
1	2	Lead	ALTCem S100-12	ALC-10	LostCirculation	0.13	lb/sk
1	2	Lead	ALTCem S100-12	AXE-30	Extender	2.00	lb/sk
1	3	Tail	ALTCem S100-12	AC3-10	Cement	100.00	%
1	3	Tail	ALTCem S100-12	ACL-10	Accelerator	2.00	lb/sk
1	3	Tail	ALTCem S100-12	ACL-20	Accelerator	5.00	%BWOB
1	3	Tail	ALTCem S100-12	ADF-11	Defoamer	0.30	%BWOB
1	3	Tail	ALTCem S100-12	ALC-10	LostCirculation	0.13	lb/sk
1	3	Tail	ALTCem S100-12	AXE-30	Extender	2.00	lb/sk

## 2 Job Logs

Line	Event	Date (MM/DD/YY)	Time (HH:MM)	Density (lb/gal)	Pump Rate (bpm)	Pump Volume (bbls)	Pipe Pressure (psi)	Comment
1	Customer call out	4/14/2017	23:30					Customer calls with and RTS of 2:30, Pump and bulk trucks already on location
2	Spot trucks	4/15/2017	03:55					Spot trucks
3	Safety meeting	4/15/2017	04:05					Pre-rig up safety meeting
4	Rig up	4/15/2017	04:10					Rig up bulk lines, water lines, and high pressure lines
5	Safety meeting	4/15/2017	04:25					Pre-job safety meeting with company man, and rig crew
6	Rig up	4/15/2017	04:40					Rig head
7	Load lines	4/15/2017	04:51	8.34	2.6	2	34	Load pumps and lines, and send bottom plug
8	Pressure test	4/15/2017	04:53	8.34			4120	Pressure test pumps and lines
9	Pump sapcer	4/15/2017	04:56	8.34	4.3	20	173	Pump Fresh water spacer + Dye
10	Lead cement	4/15/2017	05:04	12	6.2	131	299	Pump 293 sacks of lead cement @12 ppg (Yield-2.53, Mix Water-14.85)
11	Tail cement	4/15/2017	05:29	12.5	5.1	53	91	Pump 135 sacks of tail cement @12.5 ppg (Yield- 2.22, Mix Water-12.58)
12	Drop plug	4/15/2017	05:43					Shut down drop top plug
13	Displacement	4/15/2017	05:45	8.34	6.8		68	Send plug start fresh water displacement
14	Displacement	4/15/2017	05:55	8.34	6.1	50	380	Fresh water displacement
15	Dye to surface	4/15/2017	06:04	8.34	6.2	105	703	Start getting dye to surface
16	Drop rate	4/15/2017	06:06	8.34	2.5	120	467	Drop rate
17	Cement to surface	4/15/2017	06:08	8.34	2.5	126	483	Start getting good cement to surface
18	Land plug	4/15/2017	06:12	8.34	2.5	137	1258	Land plug @511 psi, bumped it up to 1258
19	Casing test	4/15/2017	06:14	8.34			1507	Start casing test
20	Check floats	4/15/2017	06:29	8.34				Bleed off and check floats (floats held) 1 bbl back
21	Safety meeting	4/15/2017	06:50					Pre-rig down safety meeting
22	Rig down	4/15/2017	06:55					Rig everything down
23	Leave location	4/15/2017	07:45					Bulk trucks leave location, pump staying on location

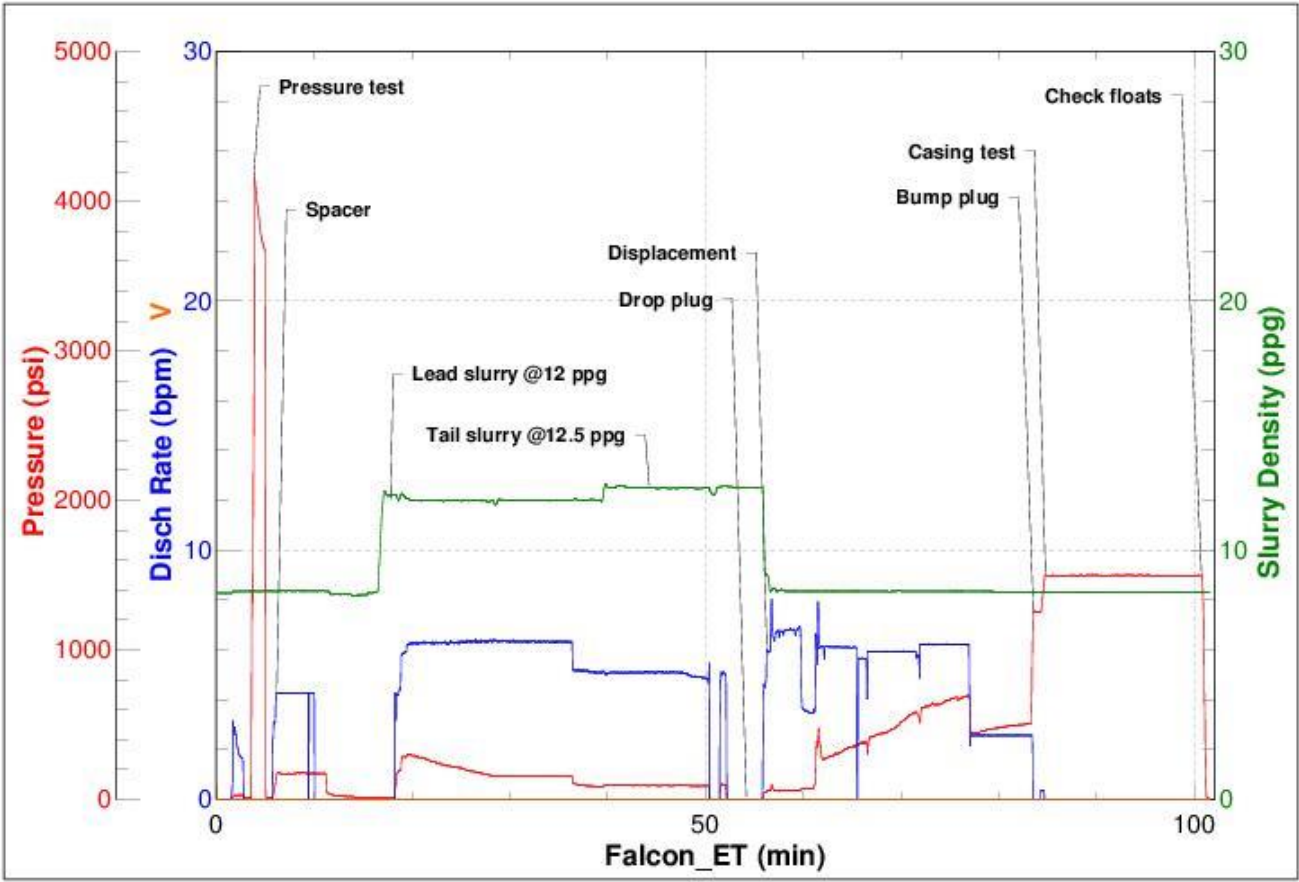


### 3 Water Analysis

Metrics	Value	Recommended
Water Source	Upright Rig Tank	
Temperature	51 °F	50-80 °F
pH Level	7	5.5-8.5
Chlorides	0 mg/L	0-3000 mg/L
Total Alkalinity	400	0-1000
Total Hardness	>250 mg/L	0-500 mg/L
Carbonates	0 mg/L	0-100 mg/L
Sulfates	<500 mg/L	0-1500 mg/L
Potassium	200 mg/L	0-3000 mg/L
Iron	0 mg/L	0-300 mg/L

# 4 Pump Diagrams

Job Number: 719  
 Customer: Petro Share  
 Well Name: Shook 3-10-4CDH



Job Start: Saturday, April 15, 2017