



Petroshare Corporation

SURFACE POST JOB REPORT

Shook 3-10-1NCH 05-001-09975
S:3 T:1S R:67W Adams CO

CallSheet #: 707
Proposal #: 13154



SURFACE Post Job Report

Attention: Mr. Bill Lloyd | (303) 500-1160 | blloyd@petroshare.com
Petroshare Corporation
9635 Maroon Circle, Ste 400 | Englewood, CO 80112

Dear Mr. Lloyd,

Thank you for the opportunity to provide cementing services on this well. BJ Services strives to achieve complete customer satisfaction. If you have any questions regarding the services or data provided, please contact BJ Services at any time.

Sincerely,

Zen Keith

Technical Specialist-II | (307) 757-7178 | Zen.Keith@bjservices.com

Field Office 1716 East Allison Rd., Cheyenne WY, 82007
Phone: (307) 638-5585

Sales Office 475 17th St. Suite 460 Denver Co., 80202
Phone: (303) 296-1158



Table of Contents

1 Job Details & Summary 3

 1.1 Geometry 3

 1.2 Equipment / People 3

 1.3 Timing 3

 1.4 General Job Information 3

 1.5 Job Details 3

 1.6 Job Details (cont.) 3

 1.7 Circulation 3

 1.8 Job Execution Information 4

 1.9 Job Fluid Details 4

2 Job Logs 5

3 Water Analysis 6

4 Pump Diagrams 7

1 Job Details & Summary

1.1 Geometry

Type	Function	OD (in)	ID (in)	Weight (lb/ft)	Thread	Top (ft)	Bottom (ft)	Excess (%)
Casing	Inner	9.625	8.921	36	LTC	0	1800	0
Casing	Outer	16	15.25	65	n/a	0	40	0
Open Hole	Outer	n/a	13.5	n/a	n/a	40	1800	25

1.2 Equipment / People

Unit Type	Unit	Employee #1	Mileage
Cement Pump	PPC11250	Staples, Anthony	180
Light Duty Pickups	3	Boyd, Brian	180
Bulk Trailer	E467	Martinez, Michael	180
Bulk Trailer	E421	Chambers, Andrew	180

1.3 Timing

Event	Date/Time
Call Out	4/9/2017 21:00
Depart Facility	4/9/2017 22:00
On Location	4/10/2017 00:30
Rig Up Iron	4/10/2017 07:00
Job Started	4/10/2017 07:46
Job Completed	4/10/2017 09:53
Rig Down Iron	4/10/2017 10:05
Depart Location	4/10/2017 10:40

1.4 General Job Information

Metrics	Value
Well Fluid Density	8.4 lb/gal
Well Fluid Type	WBM
Rig Circulation Vol	100 bbls
Rig Circulation Time	0.5 hours
Calculated Displacement	138.4 bbls
Actual Displacement	138 bbls
Total Spacer to Surface	20 bbls
Total CMT to Surface	84 bbls
Well Topped Out	No
Top Out Volume	0 bbls

1.5 Job Details

Metrics	Value
Flare Prior to Job	No
Flare During Job	No
Flare at End of Job	No
Well Full Prior to Job	Yes
Well Fluid Density Into Well	8.3 lb/gal
Well Fluid Density Out of Well	8.3 lb/gal

1.6 Job Details (cont.)

Metrics	Value
BHCT	95 °F
BHST	120 °F

1.7 Circulation

Lost Circulation Experienced
No



1.8 Job Execution Information

Job	Fluid	Product	Function	Density (lb/gal)	Yield (ft ³ /sk)	Water Rq. (gal/sk)	Water Rq. (gal/bbl)	Volume (sks)	Volume (bbl)	Top (ft)
1	1	Water	Flush	8.33			42.00		20.00	0
1	2	ALTCem S100-12	Lead	12.00	2.53	14.85		305.00	137.00	0
1	3	ALTCem S100-12	Tail	12.50	2.22	12.58		141.00	55.00	1300
1	4	Water	DisplacementFinal	8.33			42.00		136.00	0

1.9 Job Fluid Details

Job	Fluid	Type	Fluid	Product	Function	Conc.	Uom
1	2	Lead	ALTCem S100-12	AC3-10	Cement	100.00	%
1	2	Lead	ALTCem S100-12	ACL-10	Accelerator	2.00	lb/sk
1	2	Lead	ALTCem S100-12	ACL-20	Accelerator	5.00	%BWOB
1	2	Lead	ALTCem S100-12	ADF-11	Defoamer	0.30	%BWOB
1	2	Lead	ALTCem S100-12	ALC-10	LostCirculation	0.13	lb/sk
1	2	Lead	ALTCem S100-12	AXE-30	Extender	2.00	lb/sk
1	3	Tail	ALTCem S100-12	AC3-10	Cement	100.00	%
1	3	Tail	ALTCem S100-12	ACL-10	Accelerator	2.00	lb/sk
1	3	Tail	ALTCem S100-12	ACL-20	Accelerator	5.00	%BWOB
1	3	Tail	ALTCem S100-12	ADF-11	Defoamer	0.30	%BWOB
1	3	Tail	ALTCem S100-12	ALC-10	LostCirculation	0.13	lb/sk
1	3	Tail	ALTCem S100-12	AXE-30	Extender	2.00	lb/sk

2 Job Logs

Line	Event	Date (MM/DD/YY)	Time (HH:MM)	Density (lb/gal)	Pump Rate (bpm)	Pump Volume (bbls)	Pipe Pressure (psi)	Comment
1	CALL OUT	4/9/2017	19:00					CUSTOMER REQUESTED CREW BE ON LOCATION @ 4:00AM
2	PRE CONVOY	4/9/2017	20:00					DISCUSSED HAZARDS OF DRIVING
3	ARRIVE AT LOCATION	4/10/2017	00:30					ON LOCATION @ 12:30 AM
4	ASSESMENT OF LOCATION SAFETY MEETING	4/10/2017	00:45					Identified hazards of location,met with customer went over job details
5	PRE RIG UP SAFETY MEETING	4/10/2017	06:45					Discussed rigging up safely
6	RIG UP IRON	4/10/2017	07:00					rigged up equipment
7	PRE JOB SAFETY MEETING	4/10/2017	07:30					Meeting with bj crew and rig crew of doing job safely
8	TEST LINES	4/10/2017	07:46	8.33				TEST LINES TO 3500 PSI
9	PUMP LEAD CEMENT	4/10/2017	08:19	12	5	137	400	PUMPED 137BBL OF (12LB, 2.53Y, 14.85GAL/SK)
10	PUMP TAIL CEMENT	4/10/2017	08:49	12.5	5	55	400	PUMPED 55.8 BBL OF 12.58, 2.22Y, 12.58GAL/SK
11	DROP PLUG	4/10/2017	09:13					PLUG DROPPED
12	PUMP DISPLACEMENT	4/10/2017	09:14	8.33				PUMPED 138.4 BBLS OF WATER
13	CEMENT TO SURFACE	4/10/2017	09:26	12.5				84 BBLS TO SURFACE
14	SLOW RATE	4/10/2017	09:30	8.33				SLOWED TO 2BBL A MINUTE
15	BUMP PLUG	4/10/2017	09:38	8.33				BUMPED PLUG AT CALCULATED
16	CASING TEST	4/10/2017	09:38	8.33				TESTED CASING TO 1500 PSI FOR 15 MINUTES
17	CHECK FLOATS	4/10/2017	09:53					FLOATS HELD 1BBL BACK
18	PRE RIG DOWN SAFETY MEETING	4/10/2017	10:01					DISCUSSED HAZARDS OF RIG DOWN
19	RIG DOWN IRON	4/10/2017	10:05					RIGGED DOWN LOCATION
20	PRE CONVOY	4/10/2017	10:25					DISCUSSED HAZARDS OF DRIVING
21	DEPART LOCATION	4/10/2017	10:40					CREW DEPARTS LOCATION FOR YARD

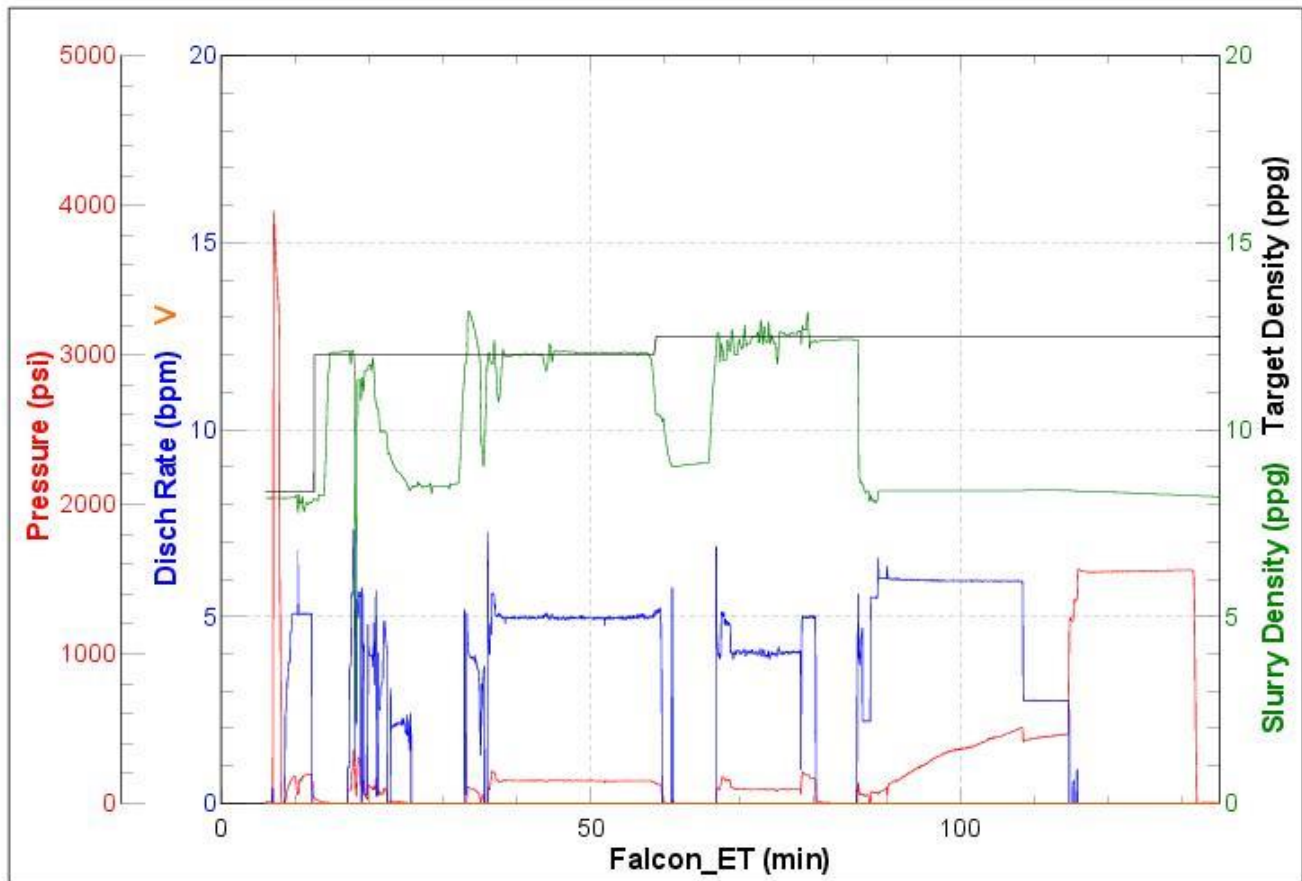


3 Water Analysis

Metrics	Value	Recommended
Water Source	Upright Rig Tank	
Temperature	68 °F	50-80 °F
pH Level	7	5.5-8.5
Chlorides	0 mg/L	0-3000 mg/L
Total Alkalinity	80	0-1000
Total Hardness	70 mg/L	0-500 mg/L
Carbonates	140 mg/L	0-100 mg/L
Sulfates	<200 mg/L	0-1500 mg/L
Potassium	450 mg/L	0-3000 mg/L
Iron	0 mg/L	0-300 mg/L

4 Pump Diagrams

Job Number:
Customer: Petroshare
Well Name: Shook 3-10-1NCH



Job Start: Monday, April 10, 2017