

Photo#1:
Overview of Location to West



November 14, 2017



COLORADO
Oil & Gas Conservation
Commission
Department of Natural Resources

Inspection Photos:TEP Federal MV API#045-06807

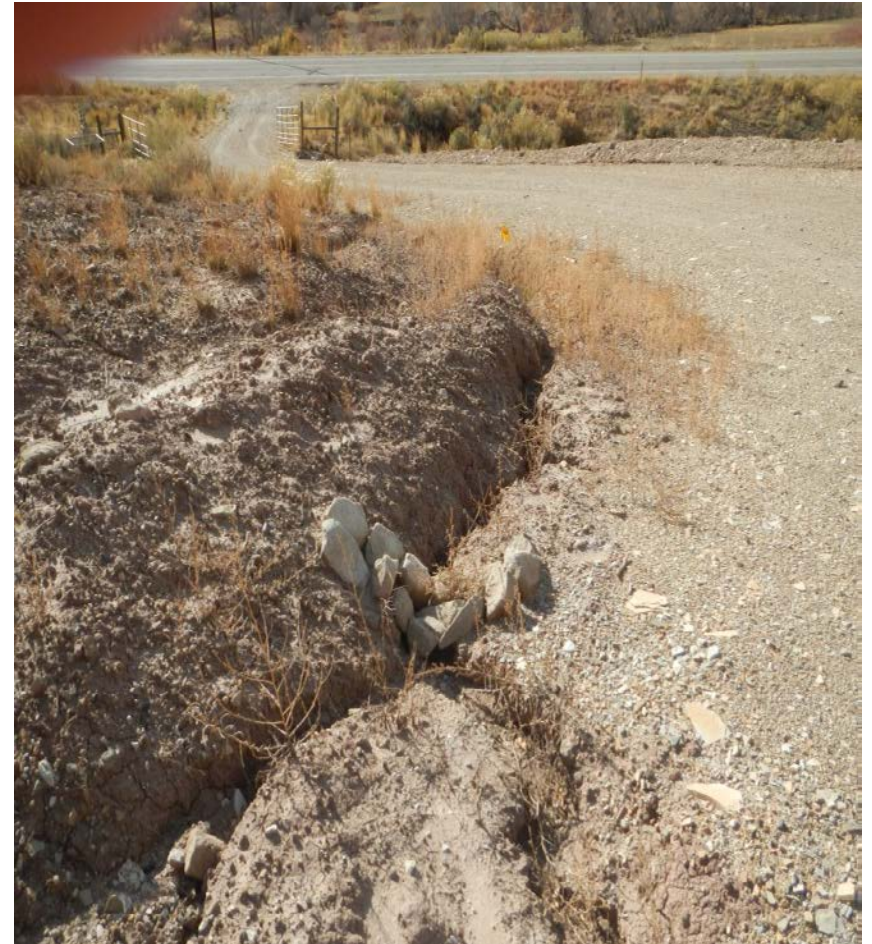
Photo#2:

Access Rd Ditch on North Side



Photo#3:

Access Rd Ditch on South Side



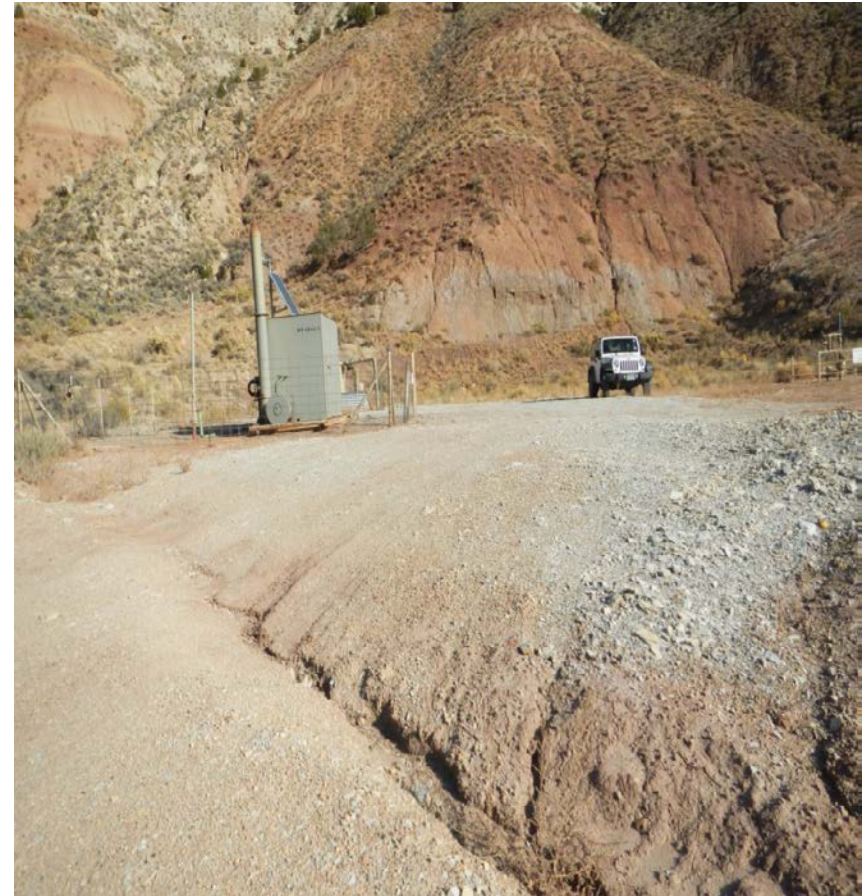
November 14, 2017

Photo#4:

Swale in Access Road at Point where Road enters Location & SW drains to Ditch in Photo #3.



Photo#5:



November 14, 2017



COLORADO
Oil & Gas Conservation
Commission
Department of Natural Resources

Inspection Photos:TEP Federal MV API#045-06807

Photo#6:

Photo#:

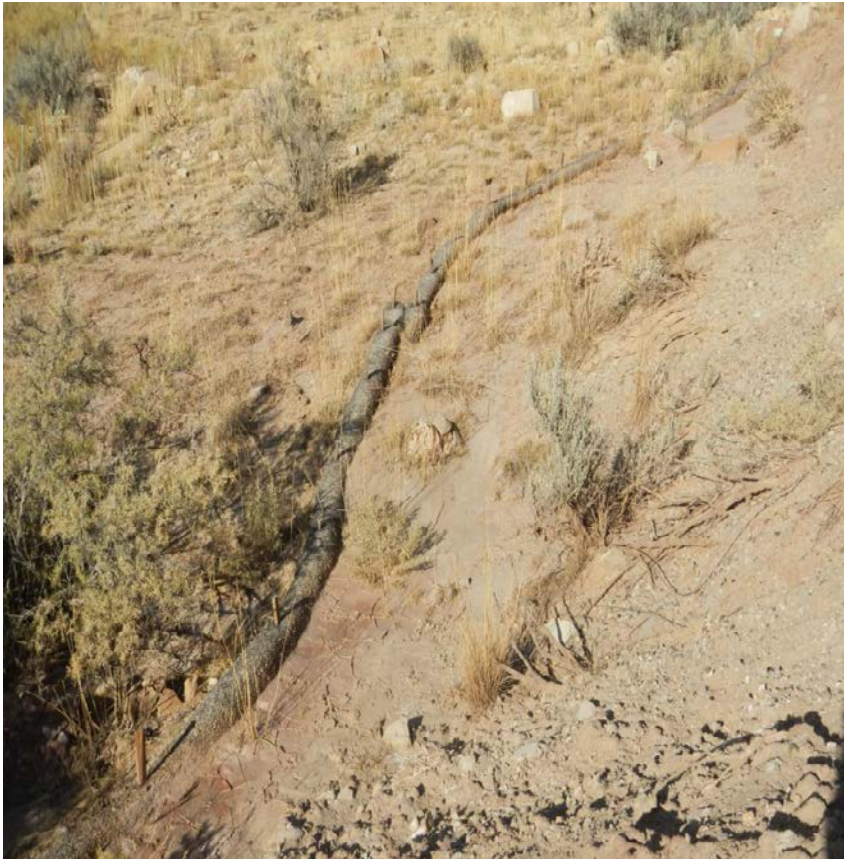
Erosion is occurring on Fill Slopes.



November 14, 2017

Photo#8:

Wattles at base of Access Road Fill Slope are overwhelmed



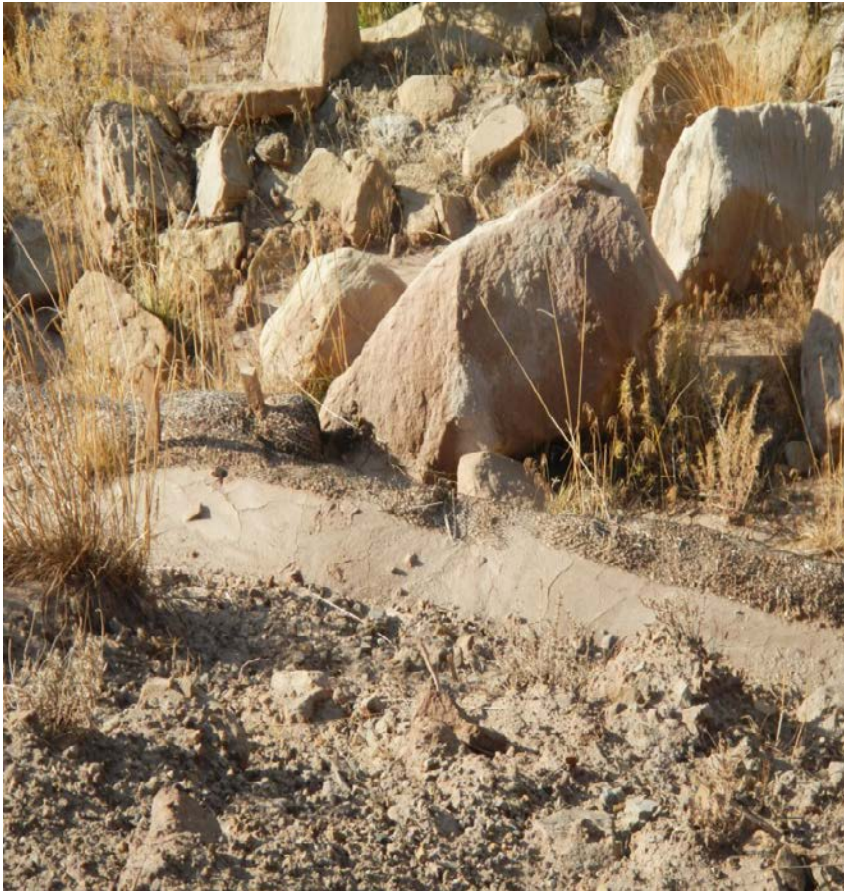
Photo#9:



November 14, 2017

Photo#10:

Wattles at base of Access Road Fill Slope are overwhelmed



Photo#11:

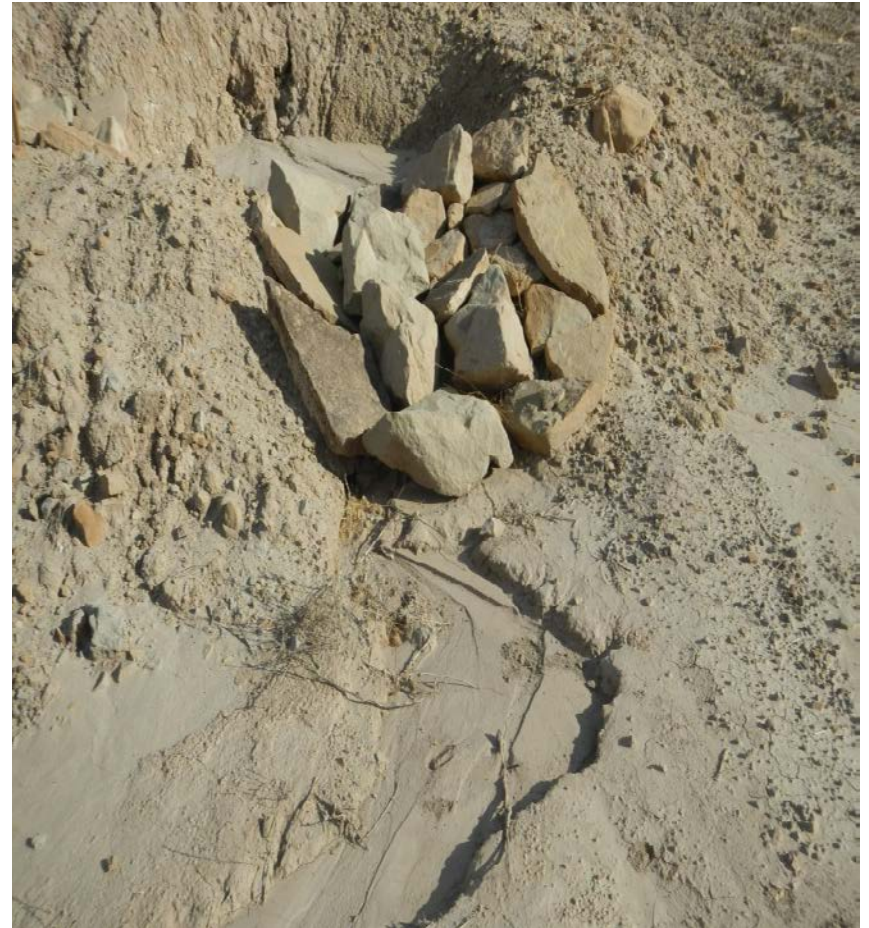


November 14, 2017

Photo#12:

Photo#13:

Sediment traps are under cut.



November 14, 2017

Photo#14:

Sediment traps are under cut.

Photo#15:



November 14, 2017

Photo#16:

View along Fill Slope to South.



November 14, 2017



COLORADO
Oil & Gas Conservation
Commission
Department of Natural Resources

Inspection Photos:TEP Federal MV API#045-06807