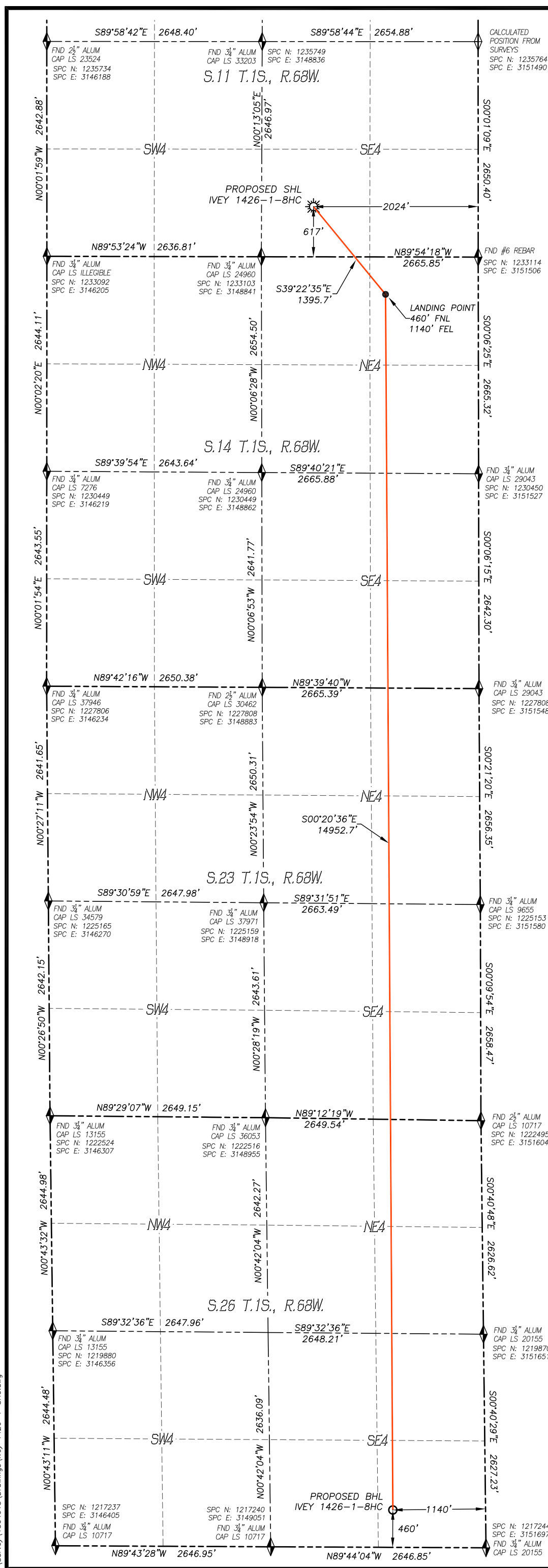


WELL LOCATION CERTIFICATE

IVEY 1426-1-8HC

SECTION 11, TOWNSHIP 1 SOUTH, RANGE 68 WEST
OF THE 6TH P.M., ADAMS COUNTY

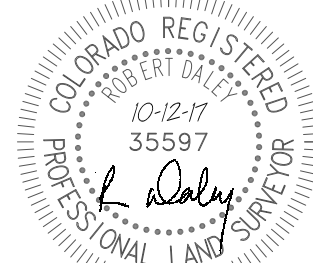


IN ACCORDANCE WITH A REQUEST FROM WARD PETROLEUM CORP., DALEY LAND SURVEYING, INC. HAS DETERMINED THE SURFACE LOCATION OF THE IVEY 1426-1-8HC WELL TO BE 617' FSL, 2024' FEL, AS MEASURED AT NINETY (90) DEGREES FROM THE SECTION LINES OF SECTION 11, TOWNSHIP 1 SOUTH, RANGE 68 WEST, AND THE BOTTOM HOLE LOCATION TO BE 460' FSL, 1140' FEL, AS MEASURED AT NINETY (90) DEGREES FROM THE SECTION LINES OF SECTION 26, TOWNSHIP 1 SOUTH, RANGE 68 WEST, OF THE 6TH PRINCIPAL MERIDIAN, ADAMS COUNTY, COLORADO.

I HEREBY STATE THAT THIS WELL LOCATION CERTIFICATE WAS PREPARED BY ME OR UNDER MY DIRECT SUPERVISION, THAT THE WORK WAS COMPLETED ON 4/28/2017 FOR AND ON BEHALF OF WARD PETROLEUM CORP., AND THAT THIS MAP DOES NOT REPRESENT A BOUNDARY SURVEY, IT IS NOT A LAND SURVEY PLAT OR AN IMPROVEMENT SURVEY PLAT AND IT IS NOT TO BE RELIED UPON FOR THE ESTABLISHMENT OF FENCE, BUILDING OR OTHER FUTURE IMPROVEMENT LINES.

NOTES:

- BEARINGS FOR THIS MAP ARE ASSUMED AND REFERENCED TO THE SOUTH QUARTER CORNER AND THE SOUTHEAST CORNER OF SECTION 11, T.1S., R.68W.
- HORIZONTAL DATUM IS NAD83. COORDINATES SHOWN ARE GRID COORDINATES, COLORADO STATE PLANE NORTH ZONE (501).
- VERTICAL DATUM IS NAVD88 AND ORIGINATES FROM THE LOCAL C.O.R.S. NETWORK, UTILIZING THE GEOID12A MODEL.
- SEE LOCATION DRAWING FOR VISIBLE IMPROVEMENTS WITHIN 500' OF PROPOSED DISTURBED AREA.
- SURFACE USE: AGRICULTURAL.
- INST. OPERATOR: SCOTT ESTABROOKS



FOR AND ON BEHALF OF
DALEY LAND SURVEYING INC.,
Robert Daley, PLS 35597

NAD 83 LATITUDE AND LONGITUDE

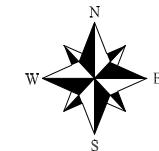
SURFACE LOCATION:		LANDING POINT/TPZ:	
LATITUDE:	N39.97372°	LATITUDE:	N39.97076°
LONGITUDE:	W104.96664°	LONGITUDE:	W104.96348°
SPC NORTH:	1233723	SPC NORTH:	1232650
SPC EAST:	3149479	SPC EAST:	3150370
ELEV:	5110'	BOTTOM HOLE:	
PDOP:	1.3	LATITUDE:	N39.92972°
QTR/QTR:	SW4/SE4	LONGITUDE:	W104.96317°
		SPC NORTH:	1217702
		SPC EAST:	3150549

NEAREST CULTURAL ITEMS:

BUILDING:	2084'± SE
BUILDING UNIT:	2209'± SE
HIGH OCC. BLD. UNIT:	3449'± SE
DES. OUTSIDE ACTIVITY AREA:	5280'+
PUBLIC ROAD:	373'± S
ABOVE GROUND UTILITY:	2118'± SE
RAILROAD:	4981'± SE
PROPERTY LINE:	277'± SE

LEGEND

- ◆ FOUND MONUMENT
- ◻ CALCULATED POSITION
- ☀ PROPOSED WELL
- BOTTOM HOLE
- ABANDONED WELL
- ⊗ EXISTING WELL



0 1200'
SCALE: 1" = 1200'



WARD PETROLEUM

DALEY LAND SURVEYING, INC.
PARKER, COLORADO
303.953.9841