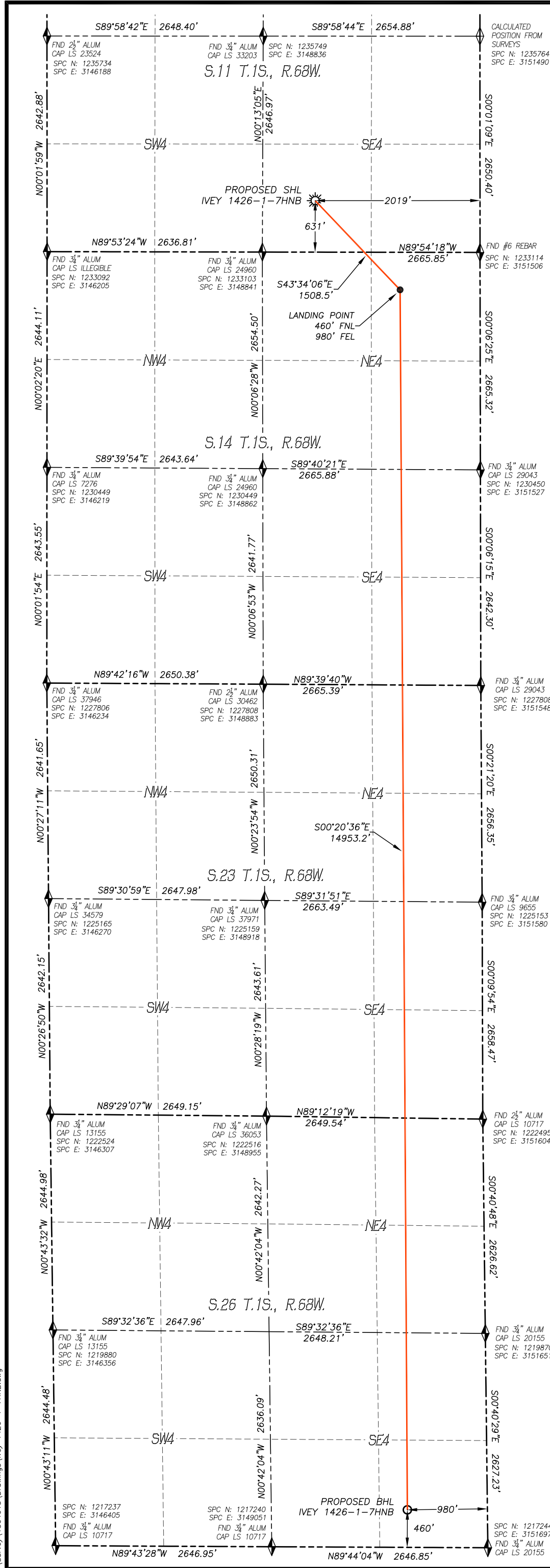


WELL LOCATION CERTIFICATE

IVEY 1426-1-7HNB

SECTION 11, TOWNSHIP 1 SOUTH, RANGE 68 WEST
OF THE 6TH P.M., ADAMS COUNTY



IN ACCORDANCE WITH A REQUEST FROM WARD PETROLEUM CORP., DALEY LAND SURVEYING, INC. HAS DETERMINED THE SURFACE LOCATION OF THE IVEY 1426-1-7HNB WELL TO BE 631' FSL, 2019' FEL, AS MEASURED AT NINETY (90) DEGREES FROM THE SECTION LINES OF SECTION 11, TOWNSHIP 1 SOUTH, RANGE 68 WEST, AND THE BOTTOM HOLE LOCATION TO BE 460' FSL, 980' FEL, AS MEASURED AT NINETY (90) DEGREES FROM THE SECTION LINES OF SECTION 26, TOWNSHIP 1 SOUTH, RANGE 68 WEST, OF THE 6TH PRINCIPAL MERIDIAN, ADAMS COUNTY, COLORADO.

I HEREBY STATE THAT THIS WELL LOCATION CERTIFICATE WAS PREPARED BY ME OR UNDER MY DIRECT SUPERVISION, THAT THE WORK WAS COMPLETED ON 4/28/2017 FOR AND ON BEHALF OF WARD PETROLEUM CORP., AND THAT THIS MAP DOES NOT REPRESENT A BOUNDARY SURVEY, IT IS NOT A LAND SURVEY PLAT OR AN IMPROVEMENT SURVEY PLAT AND IT IS NOT TO BE RELIED UPON FOR THE ESTABLISHMENT OF FENCE, BUILDING OR OTHER FUTURE IMPROVEMENT LINES.

NOTES:

- 1) BEARINGS FOR THIS MAP ARE ASSUMED AND REFERENCED TO THE SOUTH QUARTER CORNER AND THE SOUTHEAST CORNER OF SECTION 11, T.1S., R.68W.
- 2) HORIZONTAL DATUM IS NAD83. COORDINATES SHOWN ARE GRID COORDINATES, COLORADO STATE PLANE NORTH ZONE (501).
- 3) VERTICAL DATUM IS NAVD88 AND ORIGINATES FROM THE LOCAL C.O.R.S. NETWORK, UTILIZING THE GEOID12A MODEL.
- 4) SEE LOCATION DRAWING FOR VISIBLE IMPROVEMENTS WITHIN 500' OF PROPOSED DISTURBED AREA.
- 5) SURFACE USE: AGRICULTURAL.
- 6) INST. OPERATOR: SCOTT ESTABROOKS



FOR AND ON BEHALF OF
DALEY LAND SURVEYING INC.,
Robert Daley, PLS 35597

NAD 83 LATITUDE AND LONGITUDE

<u>SURFACE LOCATION:</u>	<u>LANDING POINT/TPZ:</u>
LATITUDE: N39.97376°	LATITUDE: N39.97076°
LONGITUDE: W104.96662°	LONGITUDE: W104.96291°
SPC NORTH: 1233737	SPC NORTH: 1232650
SPC EAST: 3149484	SPC EAST: 3150530
ELEV: 5110'	<u>BOTTOM HOLE:</u>
PDOP: 1.2	LATITUDE: N39.92972°
QTR/QTR: SW4/SE4	LONGITUDE: W104.96260°
	SPC NORTH: 1217702
	SPC EAST: 3150709

NEAREST CULTURAL ITEMS:

BUILDING:	2097'± SE
BUILDING UNIT:	2221'± SE
HIGH OCC. BLD. UNIT:	3446'± SE
DES. OUTSIDE ACTIVITY AREA:	5280'+
PUBLIC ROAD:	387'± S
ABOVE GROUND UTILITY:	2117'± SE
RAILROAD:	4979'± SE
PROPERTY LINE:	280'± SE

- LEGEND**
- ◆ FOUND MONUMENT
 - ◊ CALCULATED POSITION
 - ☀ PROPOSED WELL
 - BOTTOM HOLE
 - ABANDONED WELL
 - ⊗ EXISTING WELL

