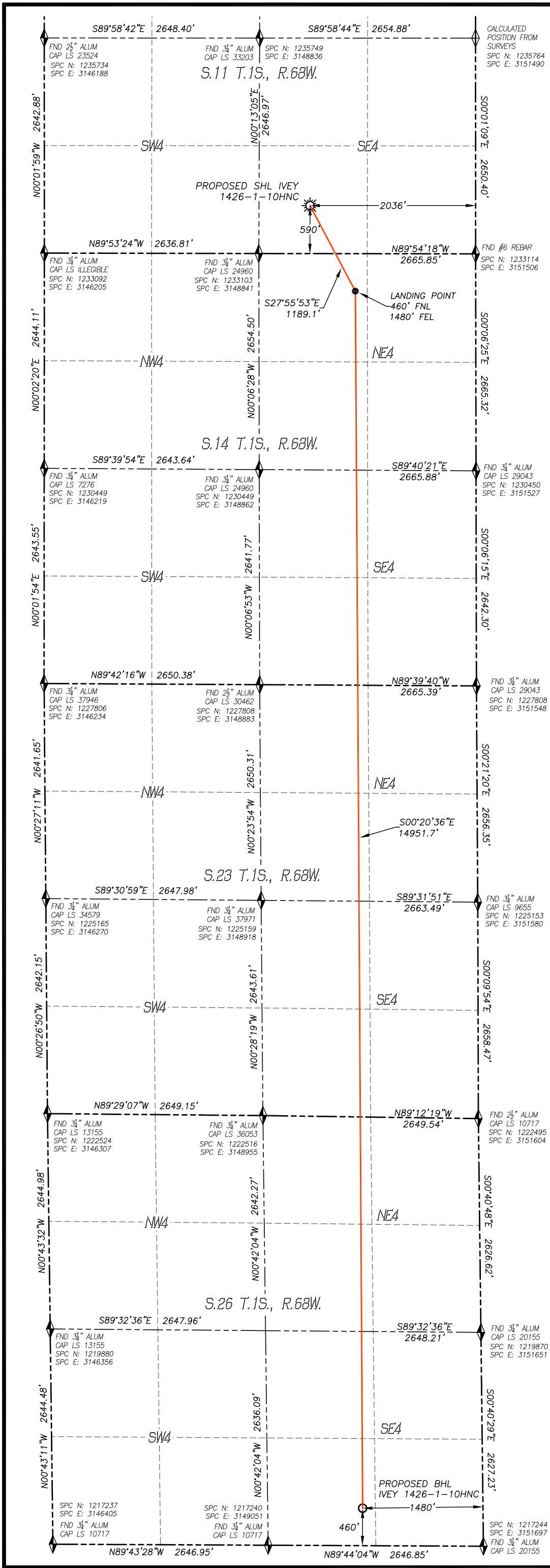


\\Survey\1304015\Drawings\Ivey 1426-1-10HNC.dwg



# WELL LOCATION CERTIFICATE

## IVEY 1426-1-10HNC

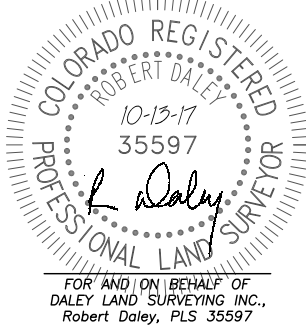
SECTION 11, TOWNSHIP 1 SOUTH, RANGE 68 WEST  
OF THE 6TH P.M., ADAMS COUNTY

IN ACCORDANCE WITH A REQUEST FROM WARD PETROLEUM CORP., DALEY LAND SURVEYING, INC. HAS DETERMINED THE SURFACE LOCATION OF THE IVEY 1426-1-10HNC WELL TO BE 590' FSL, 2036' FEL, AS MEASURED AT NINETY (90) DEGREES FROM THE SECTION LINES OF SECTION 11, TOWNSHIP 1 SOUTH, RANGE 68 WEST, AND THE BOTTOM HOLE LOCATION TO BE 460' FSL, 1480' FEL, AS MEASURED AT NINETY (90) DEGREES FROM THE SECTION LINES OF SECTION 26, TOWNSHIP 1 SOUTH, RANGE 68 WEST, OF THE 6TH PRINCIPAL MERIDIAN, ADAMS COUNTY, COLORADO.

I HEREBY STATE THAT THIS WELL LOCATION CERTIFICATE WAS PREPARED BY ME OR UNDER MY DIRECT SUPERVISION, THAT THE WORK WAS COMPLETED ON 4/28/2017 FOR AND ON BEHALF OF WARD PETROLEUM CORP., AND THAT THIS MAP DOES NOT REPRESENT A BOUNDARY SURVEY, IT IS NOT A LAND SURVEY PLAT OR AN IMPROVEMENT SURVEY PLAT AND IT IS NOT TO BE RELIED UPON FOR THE ESTABLISHMENT OF FENCE, BUILDING OR OTHER FUTURE IMPROVEMENT LINES.

### NOTES:

- 1) BEARINGS FOR THIS MAP ARE ASSUMED AND REFERENCED TO THE SOUTH QUARTER CORNER AND THE SOUTHEAST CORNER OF SECTION 11, T.1S., R.68W.
- 2) HORIZONTAL DATUM IS NAD83. COORDINATES SHOWN ARE GRID COORDINATES, COLORADO STATE PLANE NORTH ZONE (501).
- 3) VERTICAL DATUM IS NAVD88 AND ORIGINATES FROM THE LOCAL C.O.R.S. NETWORK, UTILIZING THE GEOID12A MODEL.
- 4) SEE LOCATION DRAWING FOR VISIBLE IMPROVEMENTS WITHIN 500' OF PROPOSED DISTURBED AREA.
- 5) SURFACE USE: AGRICULTURAL.
- 6) INST. OPERATOR: SCOTT ESTABROOKS



### NAD 83 LATITUDE AND LONGITUDE

SURFACE LOCATION:		LANDING POINT/TPZ:	
LATITUDE:	N39.97364°	LATITUDE:	N39.97076°
LONGITUDE:	W104.96668°	LONGITUDE:	W104.96470°
SPC NORTH:	1233695	SPC NORTH:	1232648
SPC EAST:	3149467	SPC EAST:	3150030
ELEV:	5110'	BOTTOM HOLE:	
PDOP:	1.3	LATITUDE:	N39.92973°
QTR/QTR:	SW4/SE4	LONGITUDE:	W104.96438°
		SPC NORTH:	1217702
		SPC EAST:	3150209

### NEAREST CULTURAL ITEMS:

BUILDING:	2058'± SE
BUILDING UNIT:	2186'± SE
HIGH OCC. BLD. UNIT:	3454'± SE
DES. OUTSIDE ACTIVITY AREA:	5280'±
PUBLIC ROAD:	344'± S
ABOVE GROUND UTILITY:	2120'± SE
RAILROAD:	4985'± SE
PROPERTY LINE:	272'± SE

- LEGEND**
- ◆ FOUND MONUMENT
  - ◆ CALCULATED POSITION
  - ☼ PROPOSED WELL
  - BOTTOM HOLE
  - ⊗ ABANDONED WELL
  - ⊗ EXISTING WELL

