

HALLIBURTON

ANNUAL HOLE VOLUME

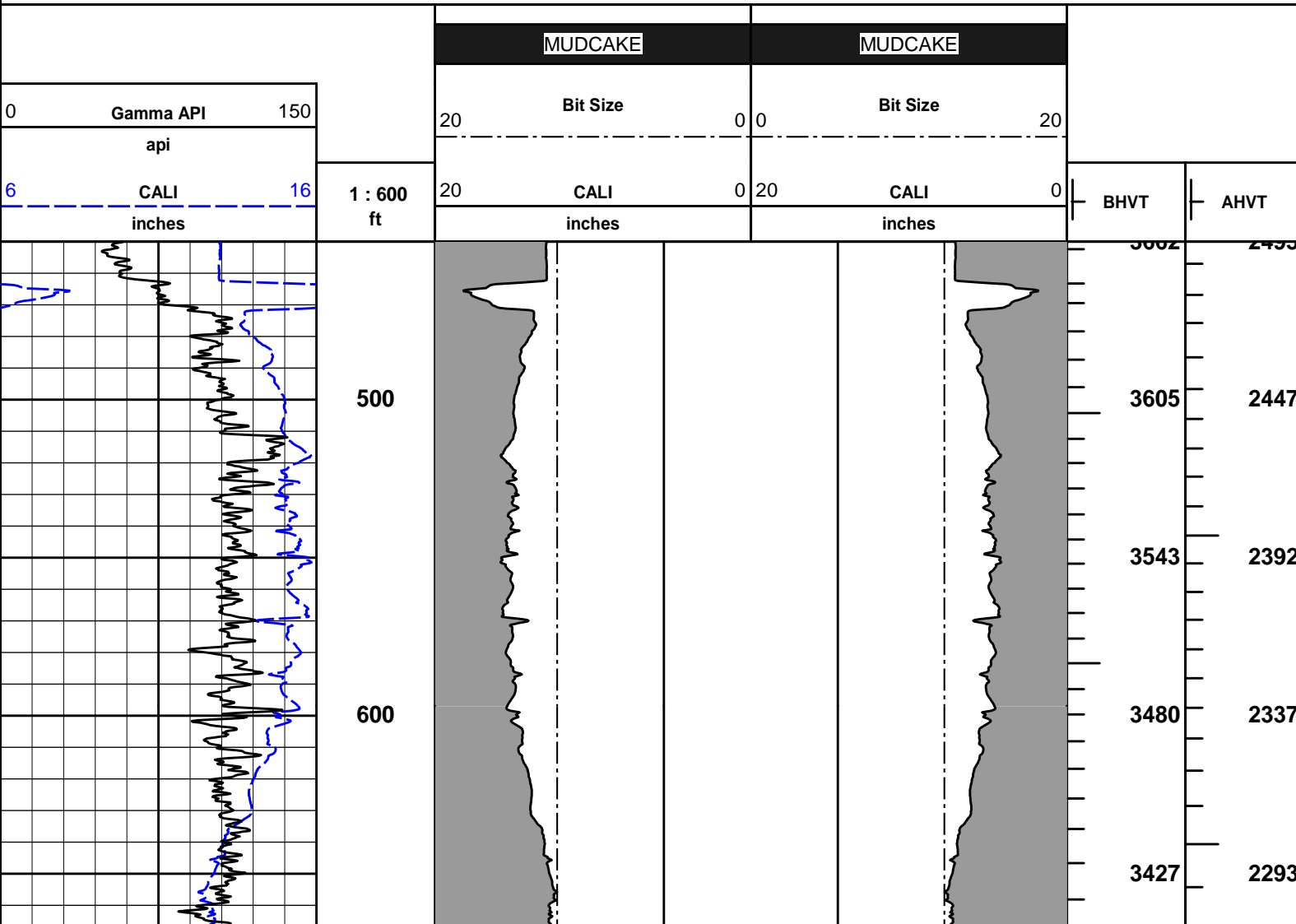
|                                |  |  |  |  |                                |  |  |  |  |                           |  |  |  |  |  |  |  |  |  |
|--------------------------------|--|--|--|--|--------------------------------|--|--|--|--|---------------------------|--|--|--|--|--|--|--|--|--|
| HALLIBURTON                    |  |  |  |  |                                |  |  |  |  | ANNULAR HOLE VOLUME       |  |  |  |  |  |  |  |  |  |
| K3 OIL & GAS OPERATING COMPANY |  |  |  |  | K3 OIL & GAS OPERATING COMPANY |  |  |  |  |                           |  |  |  |  |  |  |  |  |  |
| CLARK 13-24                    |  |  |  |  | CLARK 13-24                    |  |  |  |  |                           |  |  |  |  |  |  |  |  |  |
| WILDCAT                        |  |  |  |  | WILDCAT                        |  |  |  |  |                           |  |  |  |  |  |  |  |  |  |
| LINCOLN                        |  |  |  |  | LINCOLN                        |  |  |  |  |                           |  |  |  |  |  |  |  |  |  |
| COLORADO                       |  |  |  |  | COLORADO                       |  |  |  |  |                           |  |  |  |  |  |  |  |  |  |
| COMPANY                        |  |  |  |  | COMPANY                        |  |  |  |  |                           |  |  |  |  |  |  |  |  |  |
| WELL                           |  |  |  |  | WELL                           |  |  |  |  |                           |  |  |  |  |  |  |  |  |  |
| FIELD/BLOCK                    |  |  |  |  | FIELD/BLOCK                    |  |  |  |  |                           |  |  |  |  |  |  |  |  |  |
| COUNTY                         |  |  |  |  | COUNTY                         |  |  |  |  |                           |  |  |  |  |  |  |  |  |  |
| STATE                          |  |  |  |  | STATE                          |  |  |  |  |                           |  |  |  |  |  |  |  |  |  |
| Permanent Datum                |  |  |  |  | GL                             |  |  |  |  | Elev. 5062.0 ft           |  |  |  |  |  |  |  |  |  |
| Log measured from              |  |  |  |  | KB                             |  |  |  |  | 18.0 ft above perm. Datum |  |  |  |  |  |  |  |  |  |
| Drilling measured from         |  |  |  |  | KB                             |  |  |  |  | GL                        |  |  |  |  |  |  |  |  |  |
| Date                           |  |  |  |  | 20-Oct-17                      |  |  |  |  |                           |  |  |  |  |  |  |  |  |  |
| Run No.                        |  |  |  |  | ONE                            |  |  |  |  |                           |  |  |  |  |  |  |  |  |  |
| Depth - Driller                |  |  |  |  | 7500.0 ft                      |  |  |  |  |                           |  |  |  |  |  |  |  |  |  |
| Depth - Logger                 |  |  |  |  | 7510.0 ft                      |  |  |  |  |                           |  |  |  |  |  |  |  |  |  |
| Bottom - Logged Interval       |  |  |  |  | 7466.00 ft                     |  |  |  |  |                           |  |  |  |  |  |  |  |  |  |
| Top - Logged Interval          |  |  |  |  | 464.00 ft                      |  |  |  |  |                           |  |  |  |  |  |  |  |  |  |
| Casing - Driller               |  |  |  |  | 13.375 in                      |  |  |  |  | @                         |  |  |  |  |  |  |  |  |  |
| Casing - Logger                |  |  |  |  | 464.0 ft                       |  |  |  |  |                           |  |  |  |  |  |  |  |  |  |
| Bit Size                       |  |  |  |  | 7.875 in                       |  |  |  |  | 12.250 in @ 2500.0 ft     |  |  |  |  |  |  |  |  |  |
| Type Fluid in Hole             |  |  |  |  | Water Based Mud                |  |  |  |  |                           |  |  |  |  |  |  |  |  |  |
| Density                        |  |  |  |  | 9.4 ppg                        |  |  |  |  | 65.00 sl/qt               |  |  |  |  |  |  |  |  |  |
| PH                             |  |  |  |  | 9.00 pH                        |  |  |  |  | 8.0 cpm                   |  |  |  |  |  |  |  |  |  |
| Source of Sample               |  |  |  |  | MUD PIT                        |  |  |  |  |                           |  |  |  |  |  |  |  |  |  |
| Rm @ Meas. Temperature         |  |  |  |  | 1.41 ohmm @ 75.00 degF         |  |  |  |  | @                         |  |  |  |  |  |  |  |  |  |
| Rmf @ Meas. Temperature        |  |  |  |  | 1.29 ohmm @ 75.00 degF         |  |  |  |  | @                         |  |  |  |  |  |  |  |  |  |
| Rmc @ Meas. Temperature        |  |  |  |  | 1.55 ohmm @ 75.00 degF         |  |  |  |  | @                         |  |  |  |  |  |  |  |  |  |
| Source Rmf                     |  |  |  |  | MEAS                           |  |  |  |  | MEAS                      |  |  |  |  |  |  |  |  |  |
| Rm @ BHT                       |  |  |  |  | 0.72 ohmm @ 153.0 degF         |  |  |  |  | @                         |  |  |  |  |  |  |  |  |  |
| Time Since Circulation         |  |  |  |  | 10.0 hr hr                     |  |  |  |  |                           |  |  |  |  |  |  |  |  |  |
| Time on Bottom                 |  |  |  |  | 20-Oct-17 17:30                |  |  |  |  |                           |  |  |  |  |  |  |  |  |  |
| Max. Rec. Temperature          |  |  |  |  | 153.00 degF @ 7510.0 ft        |  |  |  |  | @                         |  |  |  |  |  |  |  |  |  |
| Equipment                      |  |  |  |  | 12147634                       |  |  |  |  | EL RENO, OK               |  |  |  |  |  |  |  |  |  |
| Recorded By                    |  |  |  |  | JORGE ORLANDO PEREZ            |  |  |  |  |                           |  |  |  |  |  |  |  |  |  |
| Witnessed By                   |  |  |  |  | JOHN MARVIN                    |  |  |  |  | SUSAN RAINBOLT            |  |  |  |  |  |  |  |  |  |
|                                |  |  |  |  |                                |  |  |  |  | RANDY SAY                 |  |  |  |  |  |  |  |  |  |

| DIRECTIONAL INFORMATION   |
|---|
| Maximum Deviation @ KOP @   |
| Remarks: ANNULAR HOLE VOLUME CALCULATED FOR 5.5 INCH CASING<br>CHLORIDES REPORTED AT 400 ppm  |
| HALLIBURTON DOES NOT GUARANTEE THE ACCURACY OF ANY INTERPRETATION OF THE LOG DATA, CONVERSION OF LOG DATA TO PHYSICAL ROCK PARAMETERS OR RECOMMENDATIONS WHICH MAY BE GIVEN BY HALLIBURTON PERSONNEL OR WHICH APPEAR ON THE LOG OR IN ANY OTHER FORM. ANY USER OF SUCH DATA, INTERPRETATIONS, CONVERSIONS, OR RECOMMENDATIONS AGREES THAT HALLIBURTON IS NOT RESPONSIBLE EXCEPT WHERE DUE TO GROSS NEGLIGENCE OR WILLFUL MISCONDUCT, FOR ANY LOSS, DAMAGES, OR EXPENSES RESULTING FROM THE USE THEREOF. |
| HALLIBURTON   |

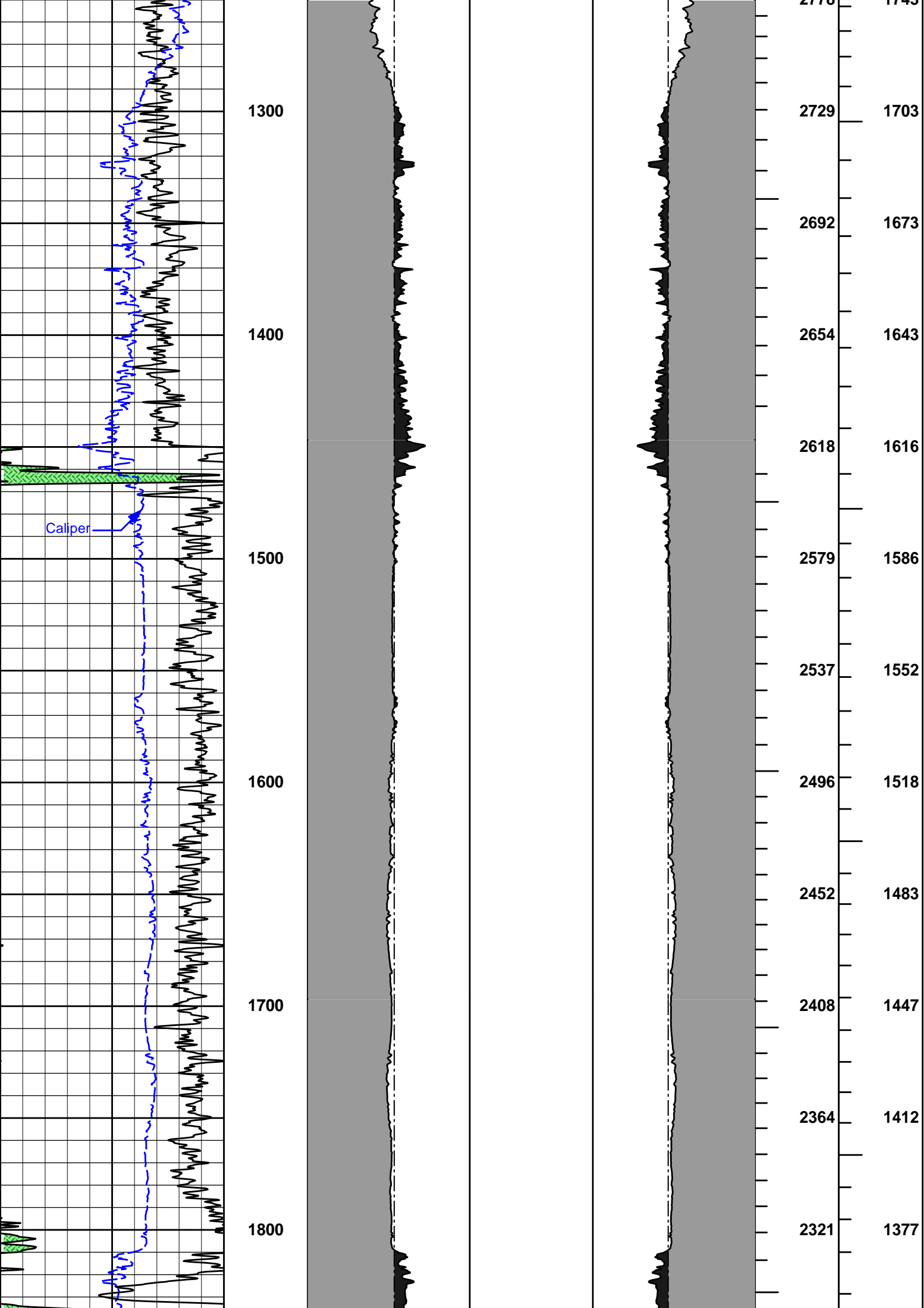
**HALLIBURTON**

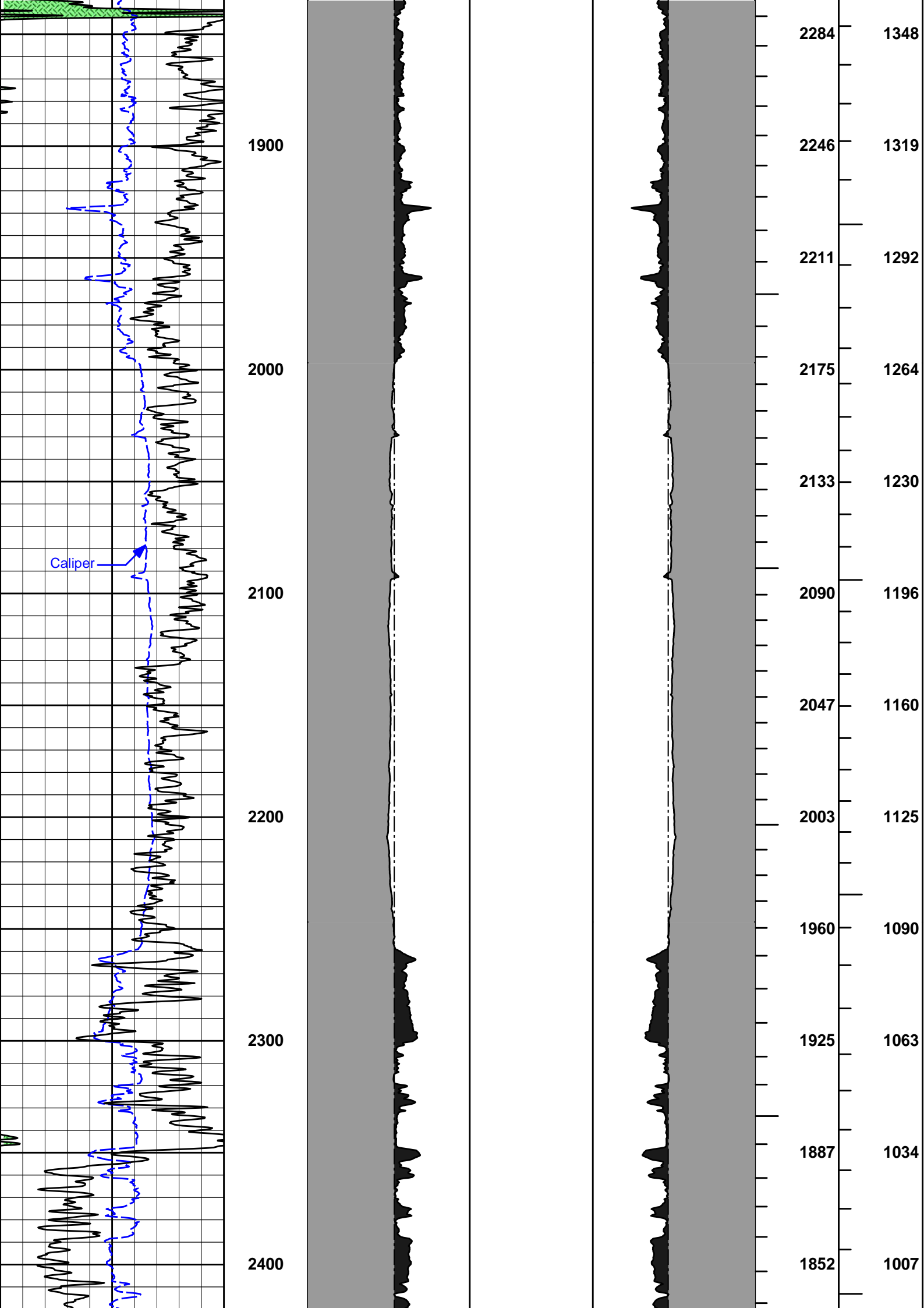
Plot Time: 20-Oct-17 20:57:15  
Plot Range: 450 ft to 7522.58 ft  
Data: CLARK\_13-24\Well Based\MAIN\  
Plot File: \\-LOCAL-\\CLARK\_13-24\Well Based\AHV\AHV Plot\_INSITE\_IQ

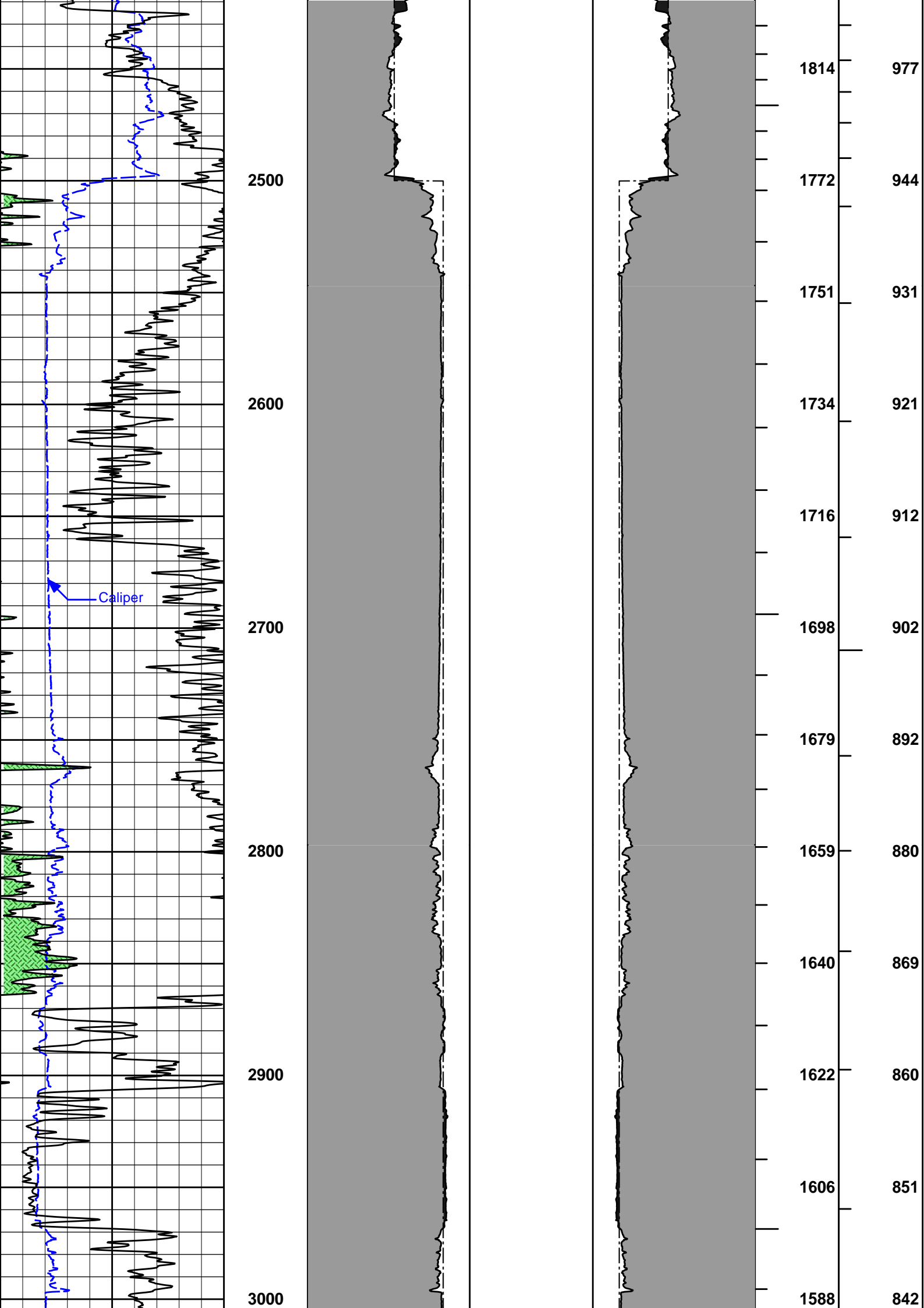
**ANNULAR HOLE VOLUME PLOT**

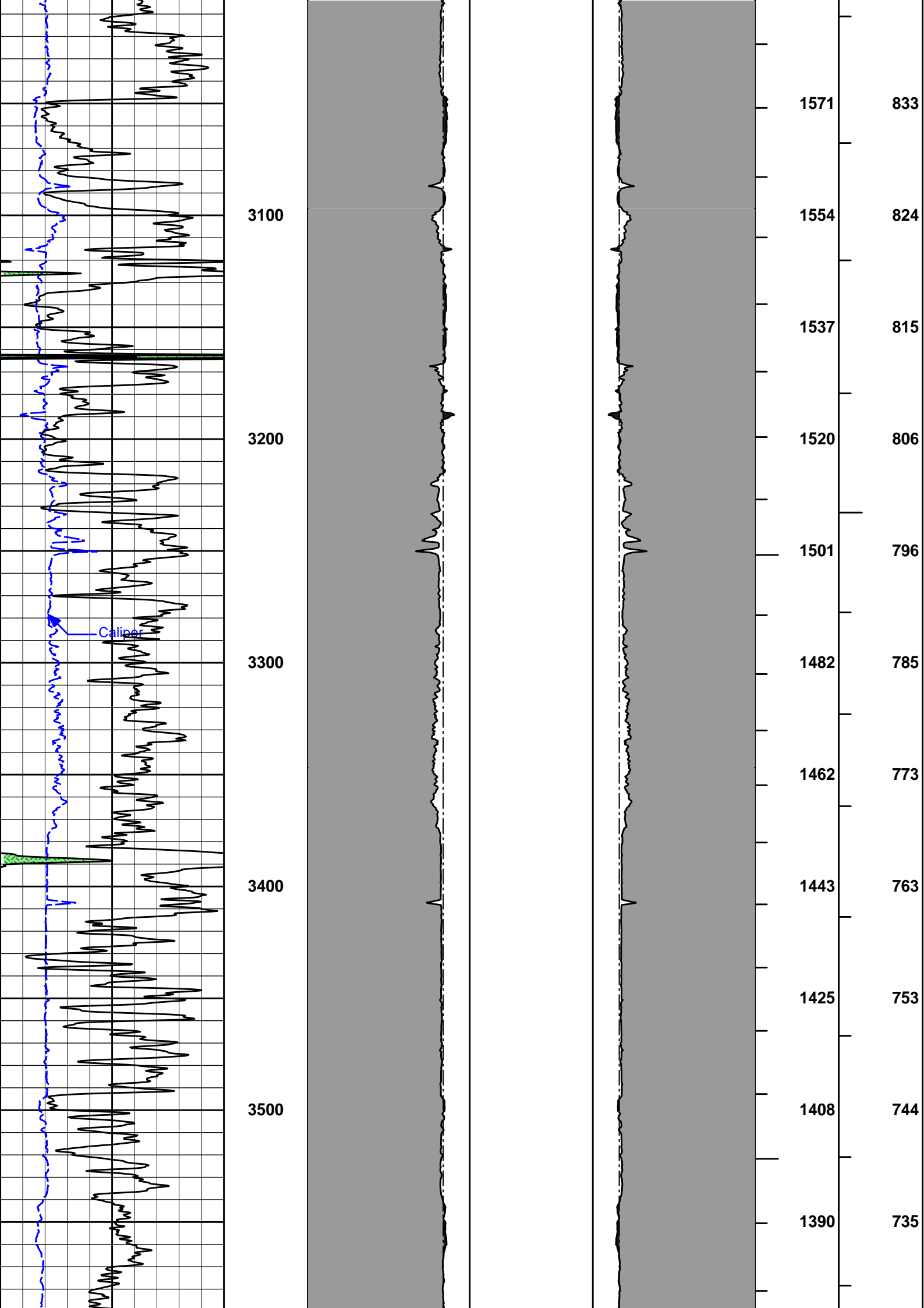


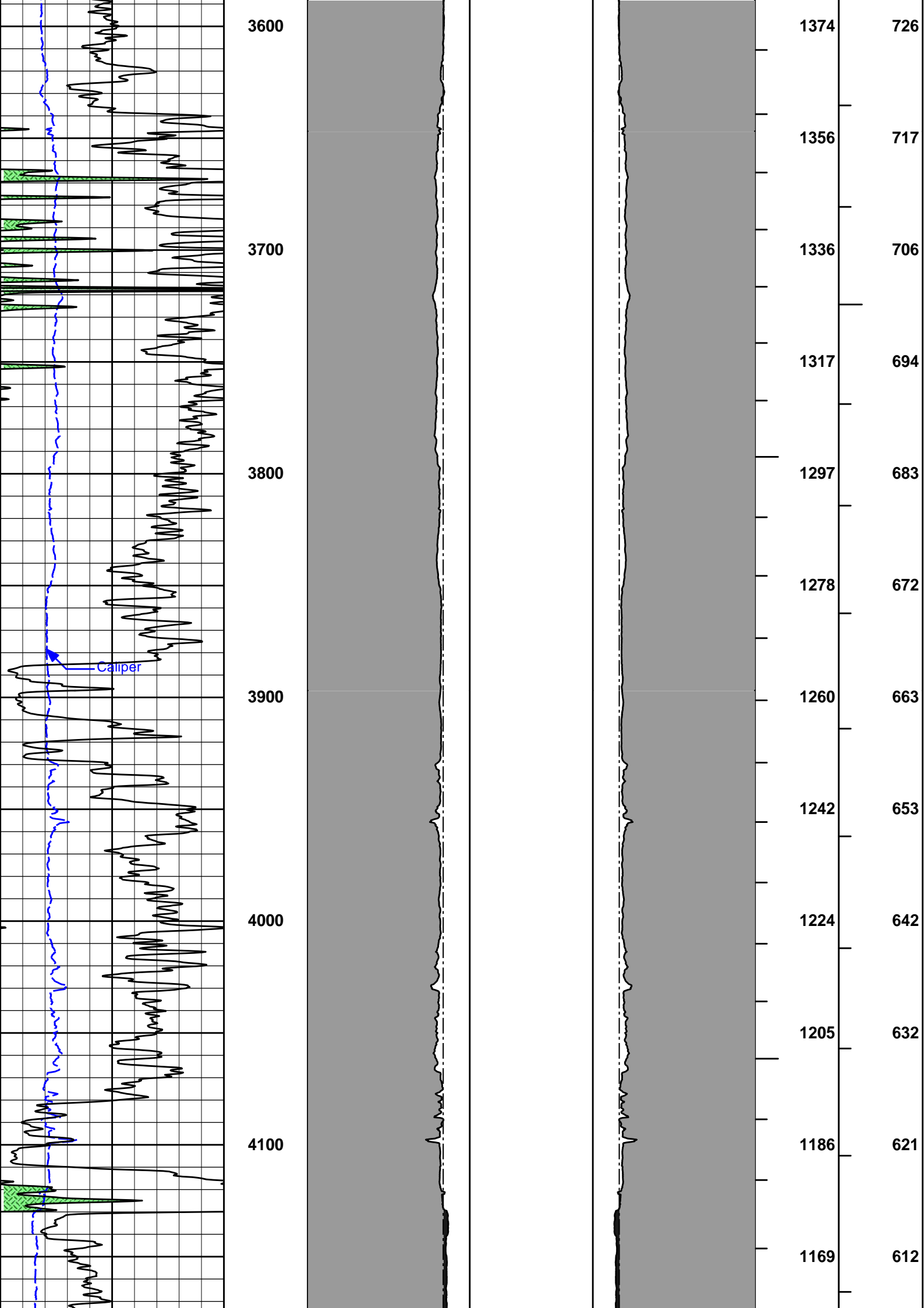




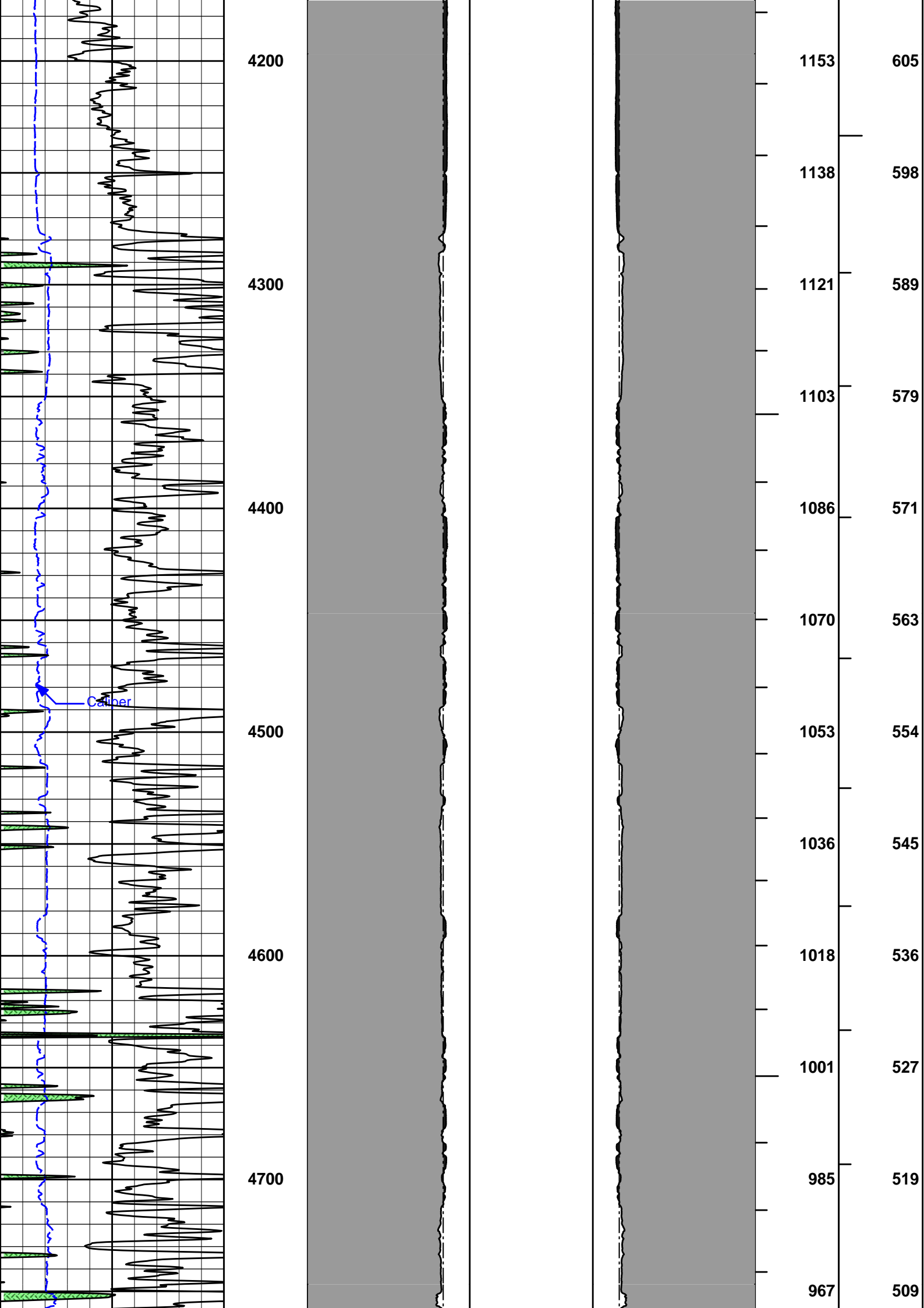


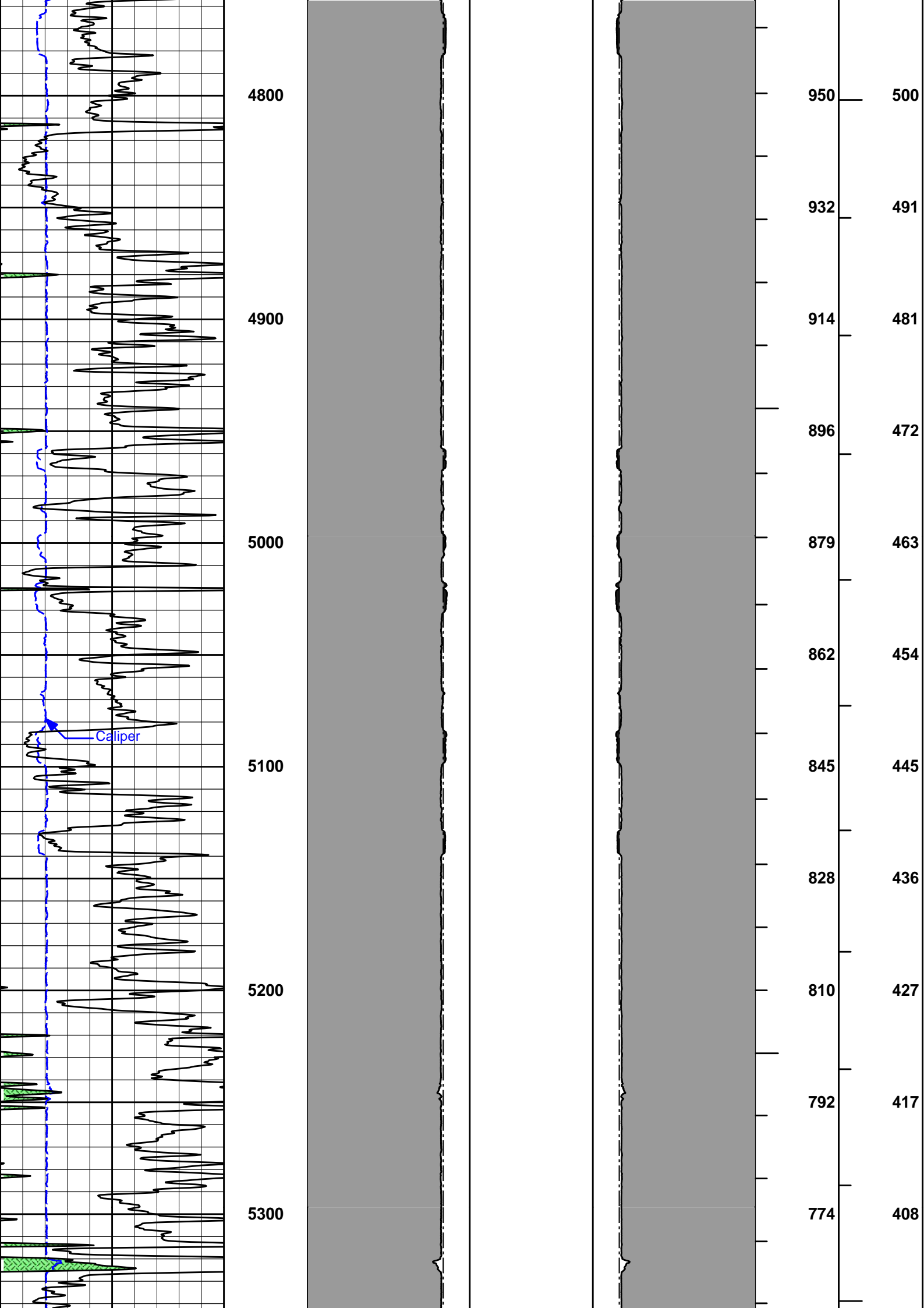


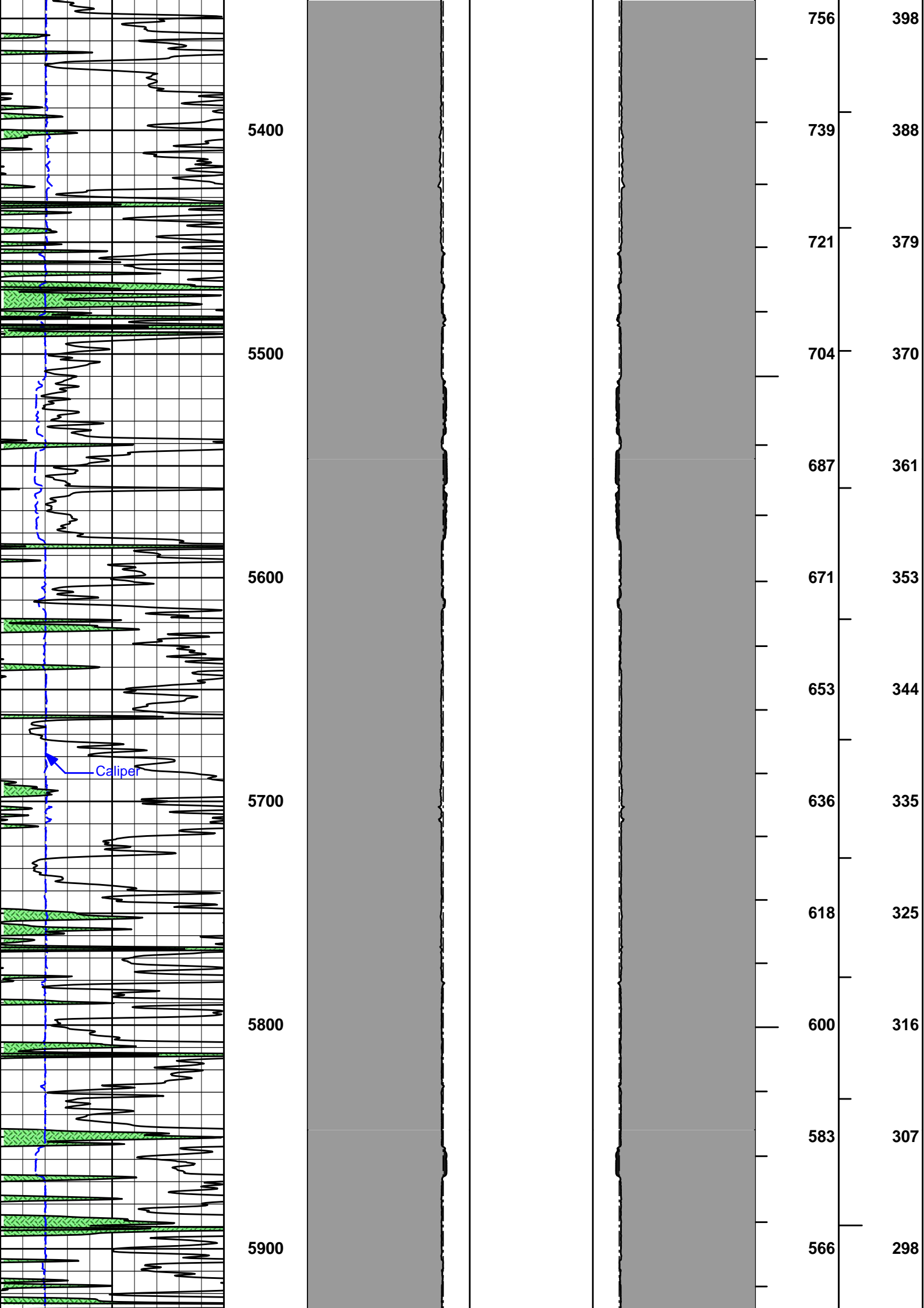


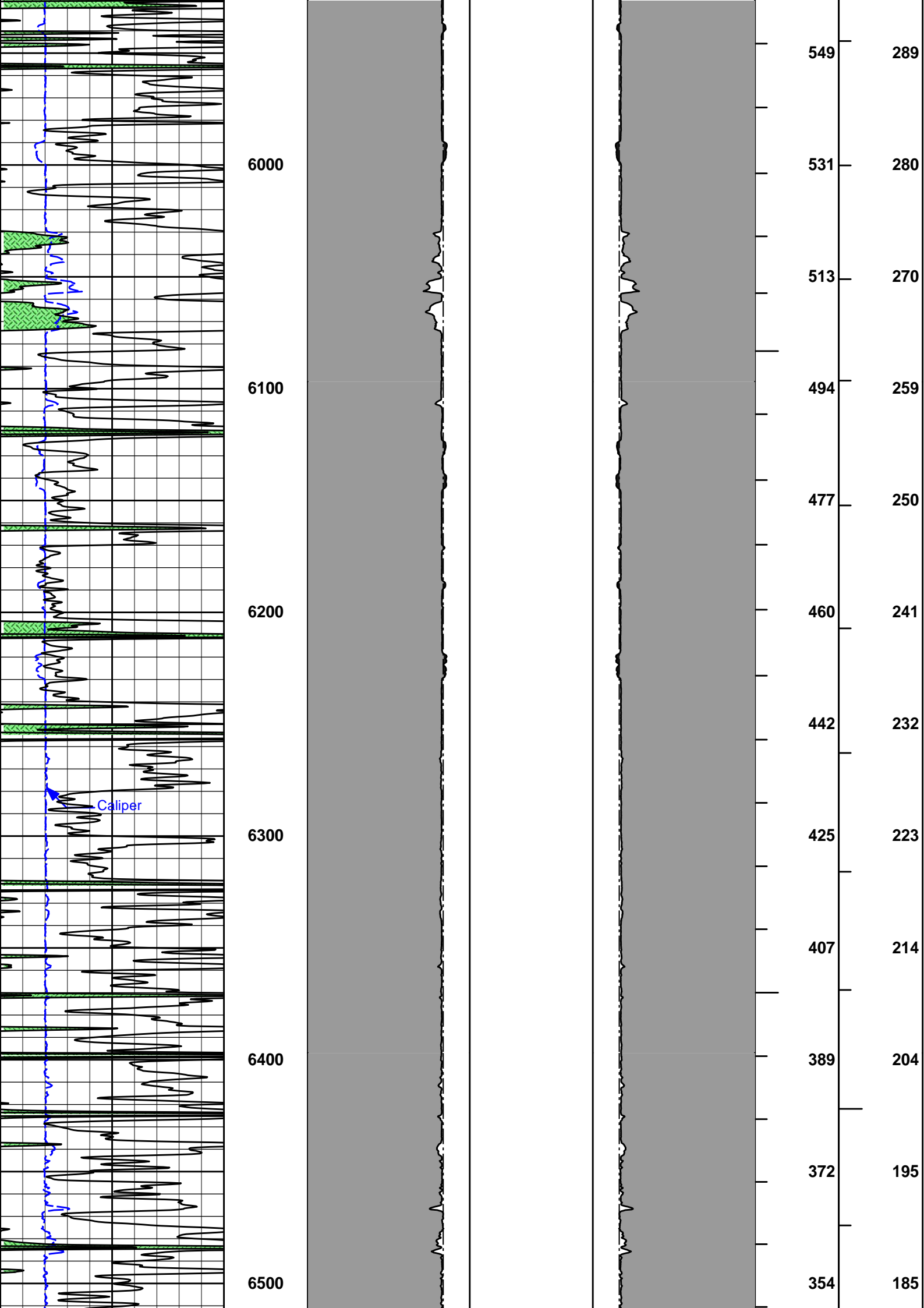


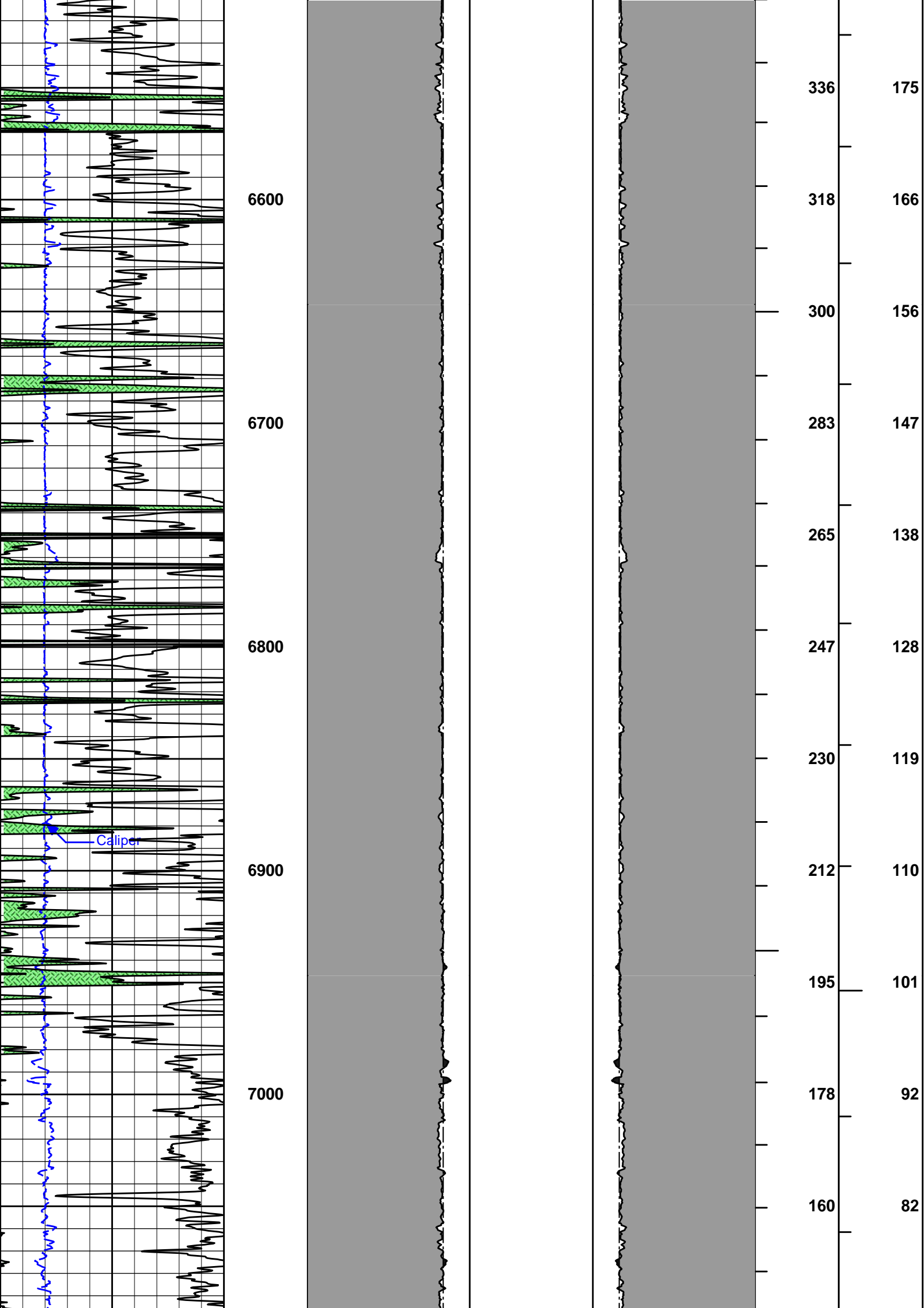














|             |                                |                     |          |
|-------------|--------------------------------|---------------------|----------|
| COMPANY     | K3 OIL & GAS OPERATING COMPANY |                     |          |
| WELL        | CLARK 13-24                    |                     |          |
| FIELD       | WILDCAT                        |                     |          |
| COUNTY      | LINCOLN                        | STATE               | COLORADO |
| HALLIBURTON |                                | ANNULAR HOLE VOLUME |          |