



TRILOBITE
TESTING, INC.

DRILL STEM TEST REPORT

K3 OIL & Gas Operating Co.

24 15s 55w Lincol, Co

24900 Pitkin Rd Ste 305
The Woodlands, Tx 77386

Clark 13-24

Job Ticket: 64688

DST#: 1

ATTN: Randy Sae

Test Start: 2017.10.16 @ 11:50:00

GENERAL INFORMATION:

Formation: **Cherokee**

Deviated: No Whipstock: ft (KB)

Time Tool Opened: 16:08:45

Time Test Ended: 21:57:45

Test Type: Conventional Bottom Hole (Initial)

Tester: Bradley Walter

Unit No: 78

Interval: **6226.00 ft (KB) To 6300.00 ft (KB) (TVD)**

Total Depth: 6300.00 ft (KB) (TVD)

Hole Diameter: 7.88 inches Hole Condition: Good

Reference Elevations: 5080.00 ft (KB)

5062.00 ft (CF)

KB to GR/CF: 18.00 ft

Serial #: 8845 Outside

Press@RunDepth: 22.85 psig @ 6227.00 ft (KB)

Start Date: 2017.10.16

End Date:

2017.10.16

Start Time: 11:50:05

End Time:

21:57:45

Capacity: 8000.00 psig

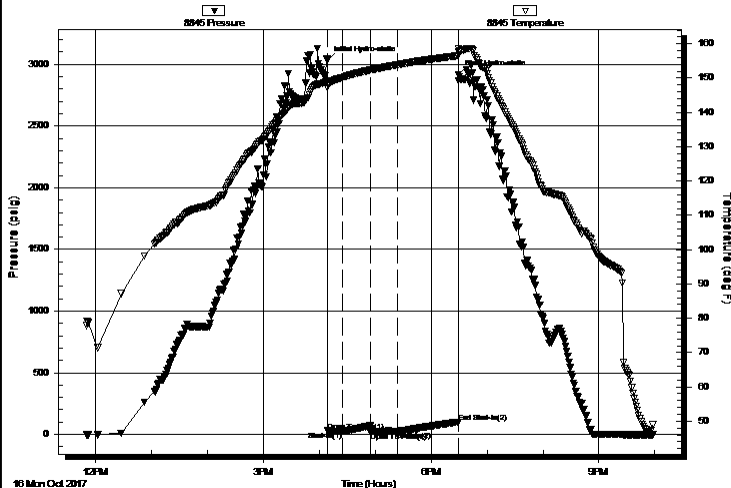
Last Calib.: 2017.10.16

Time On Btm: 2017.10.16 @ 16:08:30

Time Off Btm: 2017.10.16 @ 18:29:15

TEST COMMENT: IF: 1" blow.
IS: No return.
FF: 1 1/2" blow.
FS: No return.

Pressure vs. Time



PRESSURE SUMMARY

Time (Min.)	Pressure (psig)	Temp (deg F)	Annotation
0	3033.69	149.14	Initial Hydro-static
1	28.96	147.14	Open To Flow (1)
17	24.05	150.22	Shut-In(1)
47	69.82	152.39	End Shut-In(1)
47	18.95	152.36	Open To Flow (2)
75	22.85	153.87	Shut-In(2)
141	98.77	156.52	End Shut-In(2)
141	2919.82	157.57	Final Hydro-static

Recovery

Length (ft)	Description	Volume (bbl)
20.00	mud 100m	0.10

Gas Rates

	Choke (inches)	Pressure (psig)	Gas Rate (Mcf/d)
--	----------------	-----------------	------------------



**TRILOBITE
TESTING, INC.**

DRILL STEM TEST REPORT

K3 OIL & Gas Operating Co.

24 15s 55w Lincol, Co

24900 Pitkin Rd Ste 305
The Woodlands, Tx 77386

Clark 13-24

Job Ticket: 64688

DST#: 1

ATTN: Randy Sae

Test Start: 2017.10.16 @ 11:50:00

GENERAL INFORMATION:

Formation: **Cherokee**

Deviated: No Whipstock: ft (KB)

Time Tool Opened: 16:08:45

Time Test Ended: 21:57:45

Test Type: Conventional Bottom Hole (Initial)

Tester: Bradley Walter

Unit No: 78

Interval: 6226.00 ft (KB) To 6300.00 ft (KB) (TVD)

Total Depth: 6300.00 ft (KB) (TVD)

Hole Diameter: 7.88 inches Hole Condition: Good

Reference Elevations: 5080.00 ft (KB)

5062.00 ft (CF)

KB to GR/CF: 18.00 ft

Serial #: 8365 Inside

Press@RunDepth: psig @ 6227.00 ft (KB)

Start Date: 2017.10.16

End Date: 2017.10.16

Start Time: 11:50:05

End Time: 21:57:45

Capacity: 8000.00 psig

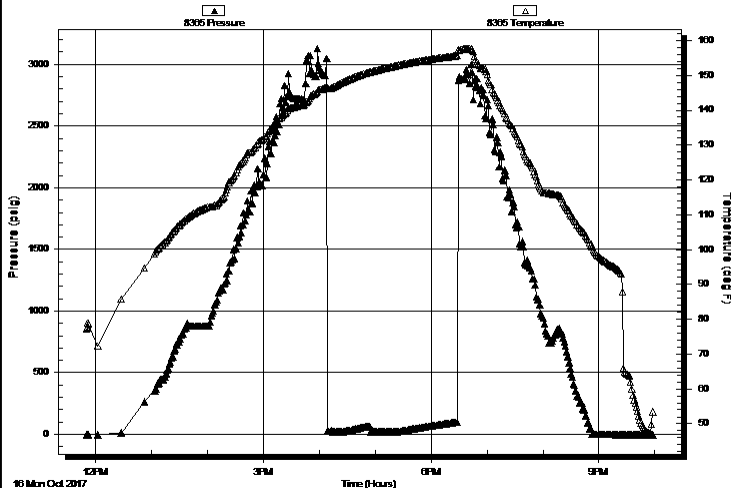
Last Calib.: 1899.12.30

Time On Btm:

Time Off Btm:

TEST COMMENT: IF: 1" blow .
IS: No return.
FF: 1 1/2" blow .
FS: No return.

Pressure vs. Time



PRESSURE SUMMARY

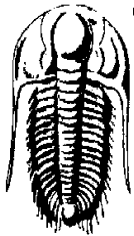
Time (Min.)	Pressure (psig)	Temp (deg F)	Annotation
-------------	-----------------	--------------	------------

Recovery

Length (ft)	Description	Volume (bbl)
20.00	mud 100m	0.10

Gas Rates

	Choke (inches)	Pressure (psig)	Gas Rate (Mcf/d)
--	----------------	-----------------	------------------



TRILOBITE
TESTING, INC.

DRILL STEM TEST REPORT

FLUID SUMMARY

K3 OIL & Gas Operating Co.

24 15s 55w Lincol, Co

24900 Pitkin Rd Ste 305
The Woodlands, Tx 77386

Clark 13-24

Job Ticket: 64688

DST#: 1

ATTN: Randy Sae

Test Start: 2017.10.16 @ 11:50:00

Mud and Cushion Information

Mud Type: Gel Chem

Mud Weight: 9.00 lb/gal

Viscosity: 77.00 sec/qt

Water Loss: 5.60 in³

Resistivity: 0.00 ohm.m

Salinity: 300.00 ppm

Filter Cake: 1.00 inches

Cushion Type:

Cushion Length:

Cushion Volume:

Gas Cushion Type:

Gas Cushion Pressure:

Oil API:

Water Salinity:

0 deg API

0 ppm

ft

bbl

psig

Recovery Information

Recovery Table

Length ft	Description	Volume bbl
20.00	mud 100m	0.098

Total Length: 20.00 ft Total Volume: 0.098 bbl

Num Fluid Samples: 0

Num Gas Bombs: 0

Serial #:

Laboratory Name:

Laboratory Location:

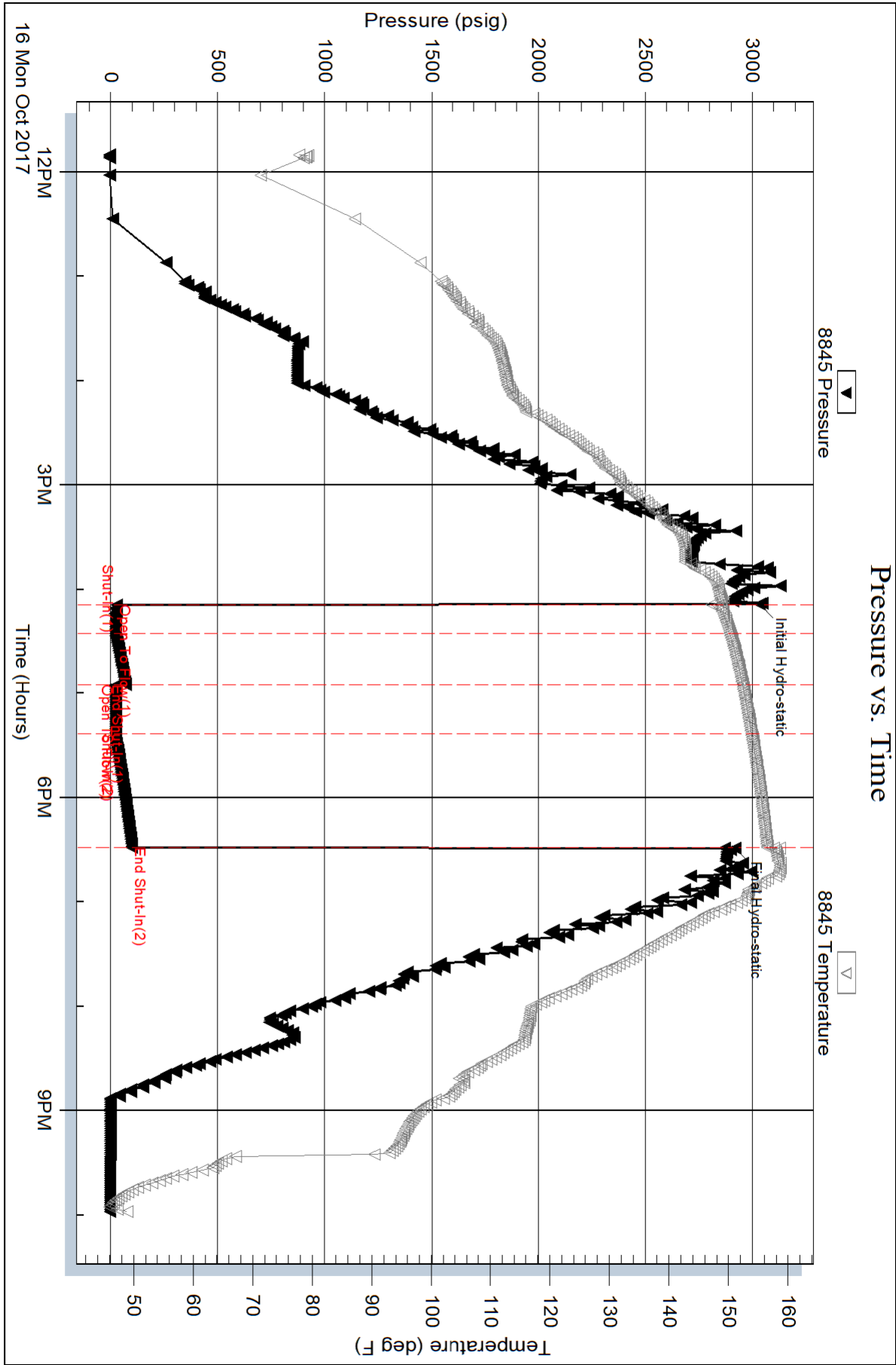
Recovery Comments: Sampler Data - 600ml Mud 100m

Serial #: 8845

Outside K3 Oil & Gas Operating Co.

Clark 13-24

DST Test Number: 1



Serial #: 8365

Inside

K3 OIL & Gas Operating Co.

Clark 13-24

DST Test Number: 1

