



Petroshare Corporation

PRODUCTION POST JOB REPORT

Shook 3-10-6CDH 05-001-09981
S:3 T:1S R:67W Adams CO

CallSheet #: 992
Proposal #: 13493



PRODUCTION Post Job Report

Attention: Mr. Bill Lloyd | (303) 500-1160 | blloyd@petroshare.com
Petroshare Corporation
9635 Maroon Circle, Ste 400 | Englewood, CO 80112

Dear Mr. Lloyd,

Thank you for the opportunity to provide cementing services on this well. BJ Services strives to achieve complete customer satisfaction. If you have any questions regarding the services or data provided, please contact BJ Services at any time.

Sincerely,

Oscar Medrano

Technical Specialist-II | (307) 996-6222 | Oscar.Medrano@bjservices.com

Field Office 1716 East Allison Rd., Cheyenne WY, 82007
Phone: (307) 638-5585

Sales Office 475 17th St. Suite 460 Denver Co., 80202
Phone: (303) 296-1158



Table of Contents

1 Job Details & Summary	3
1.1 Geometry	3
1.2 Equipment / People	3
1.3 Timing	3
1.4 Casing Equipment	3
1.5 General Job Information	3
1.6 Well Fluid Details	3
1.7 Job Details	3
1.8 Job Details (cont.)	3
1.9 Circulation	4
1.10 Job Execution Information	4
1.11 Job Fluid Details	4
2 Job Logs	6
3 Water Analysis	7
4 Pump Diagrams	7
5 Field Ticket	8
5.1 Service Charges	8
5.2 Material Charges	8
5.3 Casing Equipment Charges	9
5.4 Grand Total	9

1 Job Details & Summary

1.1 Geometry

Type	Function	OD (in)	ID (in)	Weight (lb/ft)	Thread	Top (ft)	Bottom (ft)	Excess (%)
Casing	Outer	9.625	8.921	36	n/a	0	1801	0
Open Hole	Outer	n/a	8.5	n/a	n/a	1801	14132	15
Casing	Inner	5.5	4.778	20	n/a	0	14128	0

1.2 Equipment / People

Unit Type	Unit	Employee #1	Employee #2	Mileage
Bulk Trailer	508	Borst, David		160
Silo	654			160
Silo	664			160
Cement Pump	103	Beal, Scott	Martinez, Michael	160
Light Duty Pickups	6	Acuna, Roger		160
Light Duty Pickups	4	Nepgen, AJ		160

1.3 Timing

Event	Date/Time
Call Out	7/11/2017 00:00
Depart Facility	7/11/2017 01:00
On Location	7/11/2017 03:30
Rig Up Iron	7/11/2017 04:00
Job Started	7/11/2017 07:26
Job Completed	7/11/2017 11:25
Rig Down Iron	7/11/2017 11:45
Depart Location	7/11/2017 13:15

1.4 Casing Equipment

Type	Description	Qty
Top Plugs 5 ½"	Davis Lynch Top Plug	1
Bottom Plugs 5 ½"	Davis Lynch Bottom Plug	1

1.5 General Job Information

Metrics	Value
Well Fluid Density	11.1 lb/gal
Well Fluid Type	OBM
Rig Circulation Vol	100 bbls
Rig Circulation Time	0:20 hours
Calculated Displacement	312 bbls
Actual Displacement	307 bbls
Total Spacer to Surface	0 bbls
Total CMT to Surface	0 bbls

1.6 Well Fluid Details

Metrics	Value
Plastic Viscosity	43
Yield Point	4
10 sec. SGS	3
10 min. SGS	13
30 min. SGS	19
Filtrate	10
Flow Line Temp.	116

1.7 Job Details

Metrics	Value
Flare Prior to Job	No
Flare During Job	No
Flare at End of Job	No
Well Full Prior to Job	No
Well Fluid Density Into Well	11 lb/gal
Well Fluid Density Out of Well	11 lb/gal

1.8 Job Details (cont.)

Metrics	Value
BHCT	228 °F
BHST	228 °F

1.9 Circulation

Lost Circulation Experienced
Yes

Circulation Details:

Rig lost circulation at 8300ft running casing in the hole and did not gain circulation back, While pumping we did not get any returns through out the job

1.10 Job Execution Information

Job	Fluid	Product	Function	Density (lb/gal)	Yield (ft ³ /sk)	Water Rq. (gal/sk)	Water Rq. (gal/bbl)	Volume (sks)	Volume (bbl)	Top (ft)
1	1	CD Spacer	Spacer	11.00			32.73		40.00	0
1	2	ALTCem P100-X2	Lead	12.50	2.07	11.81		976.00	359.90	0
1	3	ALTCem P50-X1	Tail	13.50	1.47	7.43		1186.00	311.49	7517
1	4	Water	DisplacementFinal	8.33			42.00		312.00	0

1.11 Job Fluid Details

Job	Fluid	Type	Fluid	Product	Function	Conc.	Uom	Start (gal)	End (gal)	Used (gal)
1	1	Spacer	CD Spacer	ASR-20	StrengthRetrogression	179.68	lb/bbl			
1	1	Spacer	CD Spacer	AR-31	Retarder	0.79	lb/bbl			
1	1	Spacer	CD Spacer	ASF-20	Surfactant	0.50	gal/bbl	20	0	20
1	1	Spacer	CD Spacer	ASF-80	Surfactant	0.50	gal/bbl	20	0	20
1	1	Spacer	CD Spacer	AVS-10	Viscosifier	0.80	lb/bbl			
1	2	Lead	ALTCem P100-X2	AC3-10	Cement	100.00	%			
1	2	Lead	ALTCem P100-X2	ABX-30	BondEnhancer	0.40	%BWOB			
1	2	Lead	ALTCem P100-X2	ADF-11	Defoamer	0.30	%BWOB			
1	2	Lead	ALTCem P100-X2	AFL-10	FluidLoss	0.30	%BWOB			
1	2	Lead	ALTCem P100-X2	AR-31	Retarder	0.20	%BWOB			
1	2	Lead	ALTCem P100-X2	AVS-10	Viscosifier	0.10	%BWOB			
1	3	Tail	ALTCem P50-X1	ACG-10	Cement	50.00	%			



1	3	Tail	ALTCem P50-X1	AFA-10	Extender	50.00	%			
1	3	Tail	ALTCem P50-X1	ADF-11	Defoamer	0.30	%BWOB			
1	3	Tail	ALTCem P50-X1	AFL-50	FluidLoss	0.20	%BWOB			
1	3	Tail	ALTCem P50-X1	AR-20	Retarder	0.10	%BWOB			
1	3	Tail	ALTCem P50-X1	AVS-10	Viscosifier	0.10	%BWOB			
1	3	Tail	ALTCem P50-X1	AVS-50	Viscosifier	2.00	%BWOB			

2 Job Logs

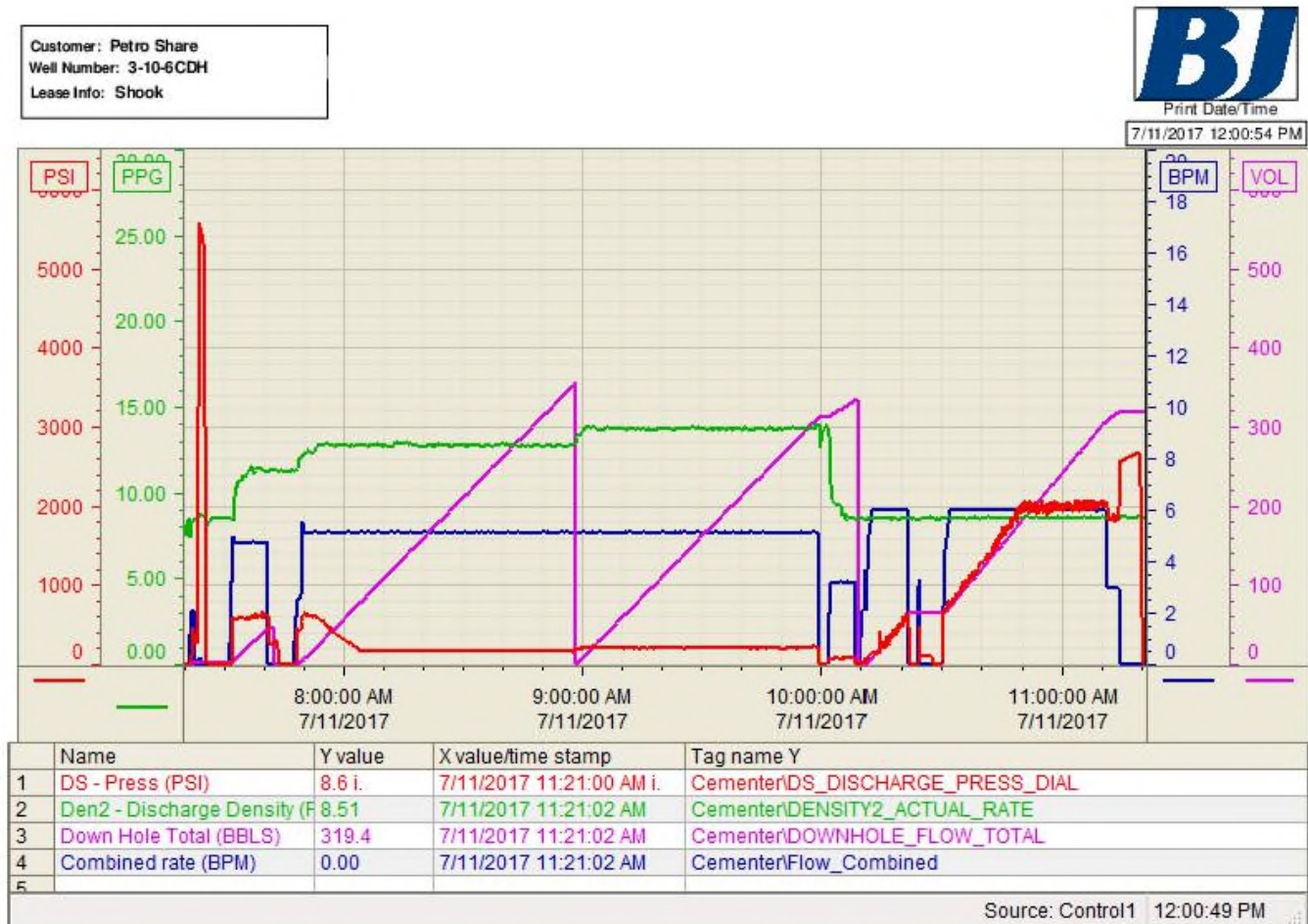
Line	Event	Date (MM/DD/YY)	Time (HH:MM)	Density (lb/gal)	Pump Rate (bpm)	Pump Volume (bbls)	Pipe Pressure (psi)	Comment
1	Called Out	7/11/2017	00:00					Called out, Requested on location time 0330am
2	Pre-Convoy Meeting	7/11/2017	00:45					Pre convoy meeting
3	Depart Camp	7/11/2017	01:00					Depart Cheyenne WY
4	Arrive to Location	7/11/2017	03:30					Arrive to location, check in with company man, 8.5" OH, 5.5" 20ppf csg @ 14128', 9.625" 36ppf @ 1801', 11.1ppg OBM in well
5	Safety Meeting	7/11/2017	03:45					Pre-rig up safety meeting
6	Rig up Iron	7/11/2017	04:00					Rig up iron
7	Waiting on Rig	7/11/2017	04:15					Waiting on rig to land out the casing, and try to establish circulation
8	Casing on Bottom	7/11/2017	07:00					Casing landed out
9	Safety Meeting	7/11/2017	07:15					Pre-job safety meeting
10	Start Job	7/11/2017	07:26					Start Job
11	Drop Bot-Plug/Fill Lines	7/11/2017	07:27	8.33	2	2	500	Drop bottom plug fill lines 2bbls fresh water
12	Test Lines	7/11/2017	07:30					Test lines 5000psi, test good
13	Pump CD Spacer	7/11/2017	07:39	11	5	40	600	Pump 40bbls CD Spacer @ 11ppg
14	Pump Lead Cement	7/11/2017	07:54	12.5	5	360	800	Pump 360bbls Lead P100-X2 @ 12.5ppg (976sks 2.07yld 11.81gps)
15	Pump Tail Cement	7/11/2017	09:05	13.5	5	312	200	Pump 312bbls Tail P50-X1 @ 13.5ppg (1186sks 1.47yld 7.43gps)
16	Shutdown	7/11/2017	10:10					Shutdown, wash pumps and lines to the pit
17	Drop Top Plug	7/11/2017	10:18					Drop top plug, wire indicated that the plug left the head
18	Displacement	7/11/2017	10:19	8.33	6	290	2000	Pump fresh water displacement
19	Slow Rate	7/11/2017	11:18	8.33	3	17	1750	Slow rate to bump plug
20	Bump Plug	7/11/2017	11:22				2000	Bump plug final circulating pressure 2000psi brought to 2500psi held for 3min, total displacement pumped 307bbls
21	Check Floats	7/11/2017	11:25					Check floats, floats held getting 2.5bbls back to the pump
22	End Job	7/11/2017	11:26					End job
23	Safety Meeting	7/11/2017	11:30					Pre-rig down safety meeting
24	Rig down Iron	7/11/2017	11:45					Rig down iron
25	Depart Location	7/11/2017	13:00					Depart location



3 Water Analysis

Metrics	Value	Recommended
Water Source	Upright Rig Tank	
Temperature	65 °F	50-80 °F
pH Level	7	5.5-8.5
Chlorides	0 mg/L	0-3000 mg/L
Total Alkalinity	250	0-1000
Total Hardness	250 mg/L	0-500 mg/L
Carbonates	0 mg/L	0-100 mg/L
Sulfates	<200 mg/L	0-1500 mg/L
Potassium	450 mg/L	0-3000 mg/L
Iron	0 mg/L	0-300 mg/L

4 Pump Diagrams





5 Field Ticket

5.1 Service Charges

Part #	Name	Unit Price	Unit	Quantity	Total
5	Additional Hours	\$1,500.00	hour	0	\$0.00
2	Depth Charge (based on MD)	\$0.50	foot	14128	\$7,064.00
6	Drayage Per Additional Unit Roundtrip	\$160.00	hour	18	\$2,880.00
14	Mobilization, Other	\$600.00	hour	3	\$1,800.00
1	Pumping Charge (includes 8 hours of location time)	\$12,000.00	job	1	\$12,000.00
Subtotal:					\$23,744.00
Discount (%):					% 65.00
Discount (\$):					\$15,433.60
Total:					\$8,310.40

5.2 Material Charges

Part #	Name	Unit Price	Unit	Quantity	Unit	Total
2605	ASR-20	\$0.55	lb	7188	lb	\$3,953.40
2213	AR-31	\$17.50	lb	32	lb	\$560.00
2402	ASF-20	\$70.70	gal	20	gal	\$1,414.00
2408	ASF-80	\$103.20	gal	20	gal	\$2,064.00
2901	AVS-10	\$52.05	lb	32	lb	\$1,665.60
2002	AC3-10	\$29.00	sack	976	sack	\$28,304.00
2703	ABX-30	\$22.50	lb	367	lb	\$8,257.50
2504	ADF-11	\$8.60	lb	276	lb	\$2,373.60
2301	AFL-10	\$32.50	lb	276	lb	\$8,970.00
2213	AR-31	\$17.50	lb	184	lb	\$3,220.00
2901	AVS-10	\$52.05	lb	92	lb	\$4,788.60
2001	ACG-10	\$28.00	sack	593	sack	\$16,604.00
2602	AFA-10	\$0.11	lb	44754	lb	\$4,922.94
2504	ADF-11	\$8.60	lb	302	lb	\$2,597.20
2308	AFL-50	\$33.50	lb	201	lb	\$6,733.50
2202	AR-20	\$25.40	lb	101	lb	\$2,565.40
2901	AVS-10	\$52.05	lb	101	lb	\$5,257.05
2905	AVS-50	\$0.40	lb	2010	lb	\$804.00
2212	AR-61	\$54.80	gal	2	gal	\$109.60
2502	ADF-20	\$107.00	gal	5	gal	\$535.00
Subtotal:						\$105,699.39
Discount (%):						% 65.00
Discount (\$):						\$68,704.60
Total:						\$36,994.79



5.3 Casing Equipment Charges

Part #	Name	Unit Price	Unit	Quantity	Unit	Total
50152	Davis Lynch 5 1/2" Top Plug	\$210.00	each	1	each	\$210.00
50153	Davis Lynch 5 1/2" Bottom Plug	\$306.00	each	1	each	\$306.00
Subtotal:						\$516.00
Discount (%):						% 60.00
Discount (\$):						\$309.60
Total:						\$206.40

5.4 Grand Total

Services	Materials	Casing Equipment	Grand Total
\$8,310.40	\$36,994.79	\$206.40	\$45,511.59