



Petroshare Corporation

SURFACE POST JOB REPORT

Shook 3-10-6CDH 05-001-09981
S:3 T:1S R:67W Adams CO

CallSheet #: 739
Proposal #: 13168



SURFACE Post Job Report

Attention: Mr. Bill Lloyd | (303) 500-1160 | blloyd@petroshare.com
Petroshare Corporation
9635 Maroon Circle, Ste 400 | Englewood, CO 80112

Dear Mr. Lloyd,

Thank you for the opportunity to provide cementing services on this well. BJ Services strives to achieve complete customer satisfaction. If you have any questions regarding the services or data provided, please contact BJ Services at any time.

Sincerely,

Nick Stille

Technical Specialist - I | (307) 286-0815 | nick.stille@bjservices.com

Field Office 1716 East Allison Rd., Cheyenne WY, 82007
Phone: (307) 638-5585

Sales Office 475 17th St. Suite 460 Denver Co., 80202
Phone: (303) 296-1158



Table of Contents

1 Job Details & Summary 3

 1.1 Geometry 3

 1.2 Equipment / People 3

 1.3 Timing 3

 1.4 General Job Information 3

 1.5 Job Details 3

 1.6 Job Details (cont.) 3

 1.7 Circulation 3

 1.8 Job Execution Information 4

 1.9 Job Fluid Details 4

2 Job Logs 5

3 Water Analysis 6

4 Pump Diagrams 6

1 Job Details & Summary

1.1 Geometry

Type	Function	OD (in)	ID (in)	Weight (lb/ft)	Thread	Top (ft)	Bottom (ft)	Excess (%)
Casing	Inner	9.625	8.921	36	LTC	0	1800	0
Casing	Outer	16	15.25	65	n/a	0	40	0
Open Hole	Outer	n/a	13.5	n/a	n/a	40	1800	15

1.2 Equipment / People

Unit Type	Unit	Employee #1	Mileage
Bulk Trailer	509	Al-Ghareeb, Michael	176
Bulk Trailer	E467	Martinez, Michael	176
Cement Pump	PPC11250	Scott, Matthew	176
Light Duty Pickups	3	Dewit, Eric	176

1.3 Timing

Event	Date/Time
Call Out	4/20/2017 06:00
Depart Facility	4/20/2017 07:30
On Location	4/20/2017 09:30
Rig Up Iron	4/20/2017 10:25
Job Started	4/20/2017 10:55
Job Completed	4/20/2017 12:22
Rig Down Iron	4/20/2017 12:45
Depart Location	4/20/2017 13:45

1.4 General Job Information

Metrics	Value
Well Fluid Density	8.4 lb/gal
Well Fluid Type	Water
Rig Circulation Vol	150 bbls
Rig Circulation Time	0.5 hours
Calculated Displacement	136.2 bbls
Actual Displacement	136.2 bbls
Total Spacer to Surface	15 bbls
Total CMT to Surface	23 bbls
Well Topped Out	No

1.5 Job Details

Metrics	Value
Flare Prior to Job	No
Flare During Job	No
Flare at End of Job	No
Well Full Prior to Job	Yes
Well Fluid Density Into Well	8.4 lb/gal
Well Fluid Density Out of Well	8.4 lb/gal

1.6 Job Details (cont.)

Metrics	Value
BHCT	95 °F
BHST	120 °F

1.7 Circulation

Lost Circulation Experienced
No



1.8 Job Execution Information

Job	Fluid	Product	Function	Density (lb/gal)	Yield (ft ³ /sk)	Water Rq. (gal/sk)	Water Rq. (gal/bbl)	Volume (sks)	Volume (bbl)	Top (ft)
1	1	Water	Flush	8.33			42.00		20.00	0
1	2	ALTCem S100-12	Lead	12.00	2.53	14.85		293.00	131.84	0
1	3	ALTCem S100-12	Tail	12.50	2.22	12.58		135.00	53.46	1300
1	4	Water	DisplacementFinal	8.33			42.00		136.00	0

1.9 Job Fluid Details

Job	Fluid	Type	Fluid	Product	Function	Conc.	Uom
1	2	Lead	ALTCem S100-12	AC3-10	Cement	100.00	%
1	2	Lead	ALTCem S100-12	ACL-10	Accelerator	2.00	lb/sk
1	2	Lead	ALTCem S100-12	ACL-20	Accelerator	5.00	%BWOB
1	2	Lead	ALTCem S100-12	ADF-11	Defoamer	0.30	%BWOB
1	2	Lead	ALTCem S100-12	ALC-10	LostCirculation	0.13	lb/sk
1	2	Lead	ALTCem S100-12	AXE-30	Extender	2.00	lb/sk
1	3	Tail	ALTCem S100-12	AC3-10	Cement	100.00	%
1	3	Tail	ALTCem S100-12	ACL-10	Accelerator	2.00	lb/sk
1	3	Tail	ALTCem S100-12	ACL-20	Accelerator	5.00	%BWOB
1	3	Tail	ALTCem S100-12	ADF-11	Defoamer	0.30	%BWOB
1	3	Tail	ALTCem S100-12	ALC-10	LostCirculation	0.13	lb/sk
1	3	Tail	ALTCem S100-12	AXE-30	Extender	2.00	lb/sk

2 Job Logs

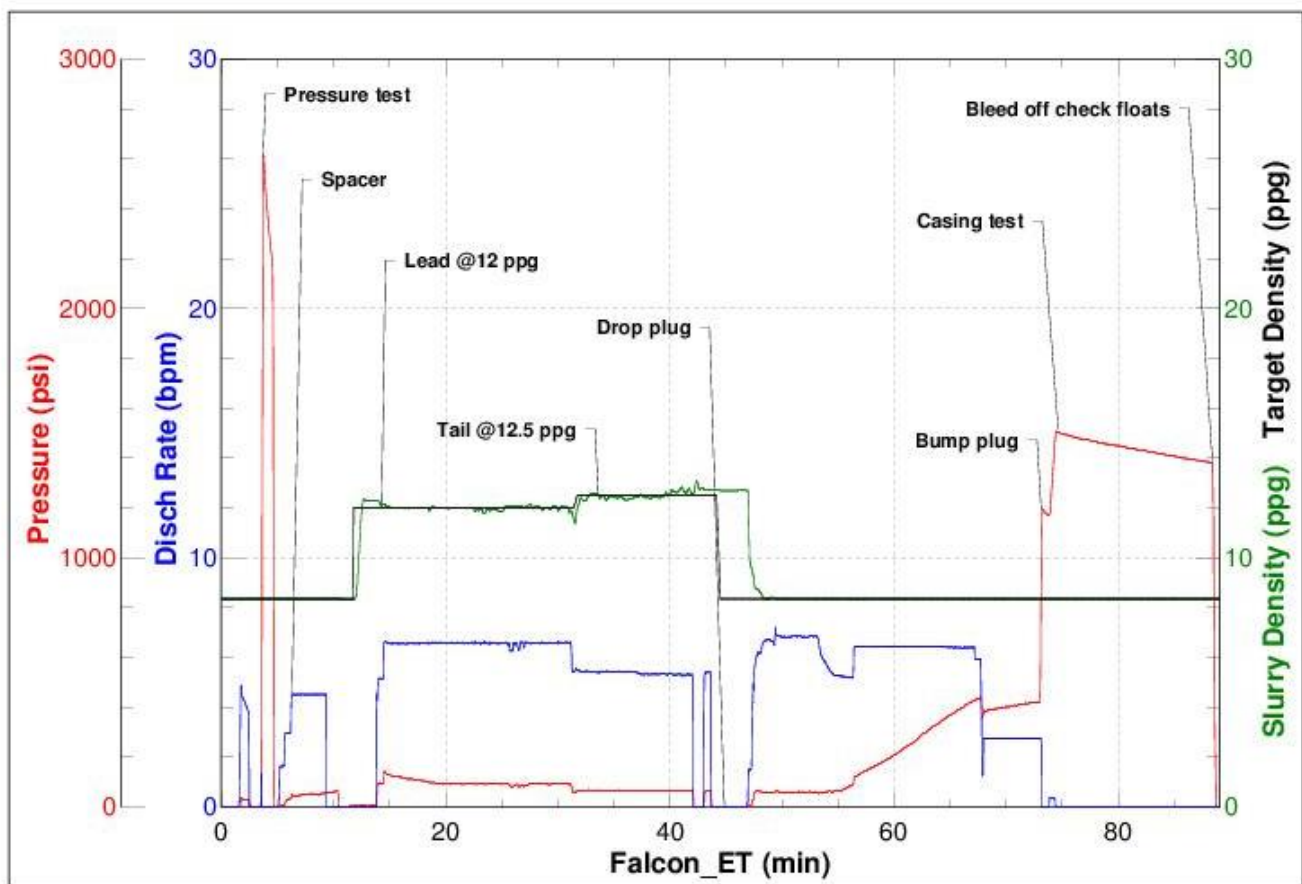
Line	Event	Date (MM/DD/YY)	Time (HH:MM)	Density (lb/gal)	Pump Rate (bpm)	Pump Volume (bbls)	Pipe Pressure (psi)	Comment
1	Customer call out	4/20/2017	06:00					Customer calls with an RTS of 10:00
2	Leave yard	4/20/2017	07:00					Bulk truck leaves the yard
3	Arrive on location	4/20/2017	09:30					Bulk truck arrives on location
4	Spot trucks	4/20/2017	10:15					Spot trucks
5	Safety meeting	4/20/2017	10:20					Pre-rig up safety meeting
6	Rig up	4/20/2017	10:25					Rig up bulk, water, and high pressure line
7	Safety meeting	4/20/2017	10:35					Pre-job safety meeting with company man, and rig crew
8	Rig up	4/20/2017	10:45					Rig up cement head
9	Load lines	4/20/2017	10:55	8.34	4.3	3	43	Load pumps and lines, and send bottom plug
10	Pressure test	4/20/2017	10:56	8.34	0	0	2670	Pressure test pumps and lines
11	Pump spacer	4/20/2017	10:59	8.34	4.5	20	48	Pump Fresh water + dye spacer
12	Lead cement	4/20/2017	11:05	12	6.6	131	123	Pump 293 sacks of lead cement @12 ppg (Yield - 2.53, Mix water - 14.58)
13	Tail cement	4/20/2017	11:25	12.5	5.4	53	83	Pump 135 sacks of tail cement @12.5 ppg (Yield - 2.22, Mix water - 12.58)
14	Shut down	4/20/2017	11:36					Shut down drop top plug
15	Displacement	4/20/2017	11:40	8.34	6.7	0	57	Send plug top plug start fresh water displacement
16	Displacement	4/20/2017	11:49	8.34	6.1	50	151	Fresh water displacement
17	Spacer back	4/20/2017	11:57	8.34	6.4	100	350	Spacer to surface
18	Cement to surface	4/20/2017	11:59	8.34	6.4	113	476	Start getting good cement to surface
19	Drop rate	4/20/2017	12:02	8.34	2.7	120	401	Drop pump rate
20	Land plug	4/20/2017	12:06	8.34	2.7	136	1180	Land plug @465 psi, bumped up to 1180 psi
21	Casing test	4/20/2017	12:07	8.34	0	0	1506	Start casing test
22	Check floats	4/20/2017	12:22	8.34	0	0	0	Bleed off check floats (floats held) 1 bbl back
23	Safety meeting	4/20/2017	12:40					Pre-rig down safety meeting
24	Rig down	4/20/2017	12:45					Rig everything down
25	Leave location	4/20/2017	13:40					Leave location bring everything back to the yard

3 Water Analysis

Metrics	Value	Recommended
Water Source	Rig Tank	
Temperature	54 °F	50-80 °F
pH Level	7	5.5-8.5
Chlorides	0 mg/L	0-3000 mg/L
Total Alkalinity	400	0-1000
Total Hardness	<250 mg/L	0-500 mg/L
Carbonates	0 mg/L	0-100 mg/L
Sulfates	<500 mg/L	0-1500 mg/L
Potassium	200 mg/L	0-3000 mg/L
Iron	0 mg/L	0-300 mg/L

4 Pump Diagrams

Job Number: 739
Customer: Petro Share
Well Name: Shook 3-10-6CDH



Job Start: Thursday, April 20, 2017