



Petroshare Corporation

PRODUCTION POST JOB REPORT

Shook 3-10-3NBH 05-001-09977
S:3 T:1S R:67W Adams CO

CallSheet #: 1113
Proposal #: 13665



PRODUCTION Post Job Report

Attention: Mr. Bill Lloyd | (303) 500-1160 | blloyd@petroshare.com
Petroshare Corporation
9635 Maroon Circle, Ste 400 | Englewood, CO 80112

Dear Mr. Lloyd,

Thank you for the opportunity to provide cementing services on this well. BJ Services strives to achieve complete customer satisfaction. If you have any questions regarding the services or data provided, please contact BJ Services at any time.

Sincerely,

Jason Creel

Field Engineer | (307) 256-0306 | Jason.Creel@BJSERVICES.COM

Field Office 1716 East Allison Rd., Cheyenne WY, 82007
Phone: (307) 638-5585

Sales Office 475 17th St. Suite 460 Denver Co., 80202
Phone: (303) 296-1158



Table of Contents

1 Job Details & Summary	3
1.1 Geometry	3
1.2 Equipment / People	3
1.3 Timing	3
1.4 General Job Information	3
1.5 Well Fluid Details	3
1.6 Job Details	3
1.7 Job Details (cont.)	3
1.8 Circulation	4
1.9 Job Execution Information	4
1.10 Job Fluid Details	4
2 Job Logs	5
3 Water Analysis	7
4 Pump Diagrams	7
5 Field Ticket	8
5.1 Service Charges	8
5.2 Material Charges	8
5.3 Casing Equipment Charges	9
5.4 Grand Total	9

1 Job Details & Summary

1.1 Geometry

Type	Function	OD (in)	ID (in)	Weight (lb/ft)	Thread	Top (ft)	Bottom (ft)	Excess (%)
Casing	Outer	9.625	8.921	36	n/a	0	1808	0
Open Hole	Outer	n/a	8.5	n/a	n/a	1808	13729	15
Casing	Inner	5.5	4.778	20	n/a	0	13745	0

1.2 Equipment / People

Unit Type	Unit	Employee #1	Employee #2	Mileage
Bulk Trailer	505	Nepgen, AJ	Staples, Anthony	180
Silo	654			
Silo	664			
Cement Pump	101	Vasquez, Mike		180
Light Duty Pickups	3	Chambers, Andrew		180

1.3 Timing

Event	Date/Time
Call Out	8/5/2017 17:00
Depart Facility	8/5/2017 18:00
On Location	8/5/2017 20:00
Rig Up Iron	8/5/2017 21:00
Job Started	8/6/2017 02:13
Job Completed	8/6/2017 06:11
Rig Down Iron	8/6/2017 06:45
Depart Location	8/6/2017 08:18

1.4 General Job Information

Metrics	Value
Well Fluid Density	10.6 lb/gal
Well Fluid Type	WBM
Rig Circulation Vol	560 bbls
Rig Circulation Time	1.1 hours
Calculated Displacement	303.1 bbls
Actual Displacement	300 bbls
Total Spacer to Surface	20 bbls
Total CMT to Surface	63 bbls

1.5 Well Fluid Details

Metrics	Value
Plastic Viscosity	37
Yield Point	6
10 sec. SGS	3
10 min. SGS	14
30 min. SGS	30
Filtrate	12
Flow Line Temp.	160

1.6 Job Details

Metrics	Value
Flare Prior to Job	No
Flare During Job	No
Flare at End of Job	No
Well Full Prior to Job	Yes
Well Fluid Density Into Well	10.6 lb/gal
Well Fluid Density Out of Well	10.6 lb/gal

1.7 Job Details (cont.)

Metrics	Value
BHCT	228 °F
BHST	228 °F

1.8 Circulation

Lost Circulation Experienced
No

1.9 Job Execution Information

Job	Fluid	Product	Function	Density (lb/gal)	Yield (ft ³ /sk)	Water Rq. (gal/sk)	Water Rq. (gal/bbl)	Volume (sks)	Volume (bbl)	Top (ft)
1	1	CD Spacer	Spacer	11.00			32.73		40.00	0
1	2	P100-X2	Lead	12.50	2.07	11.81		913.00	336.67	0
1	3	P50-X1	Tail	13.50	1.47	7.43		1190.00	312.54	7132
1	4	Water	DisplacementFinal	8.33			42.00		303.00	0

1.10 Job Fluid Details

Job	Fluid	Type	Fluid	Product	Function	Conc.	Uom
1	1	Spacer	CD Spacer	ASR-20	Strength Retrogression	179.68	lb/bbl
1	1	Spacer	CD Spacer	AR-31	Retarder	0.79	lb/bbl
1	1	Spacer	CD Spacer	ASF-20	Surfactant	0.50	gal/bbl
1	1	Spacer	CD Spacer	ASF-80	Surfactant	0.50	gal/bbl
1	1	Spacer	CD Spacer	AVS-10	Viscosifier	0.80	lb/bbl
1	2	Lead	P100-X2	AC3-10	Cement	100.00	%
1	2	Lead	P100-X2	ABX-30	Bond Enhancer	0.40	%BWOB
1	2	Lead	P100-X2	ADF-11	Defoamer	0.30	%BWOB
1	2	Lead	P100-X2	AFL-10	Fluid Loss	0.30	%BWOB
1	2	Lead	P100-X2	AR-31	Retarder	0.20	%BWOB
1	2	Lead	P100-X2	AVS-10	Viscosifier	0.10	%BWOB
1	3	Tail	P50-X1	ACG-10	Cement	50.00	%
1	3	Tail	P50-X1	AFA-10	Extender	50.00	%
1	3	Tail	P50-X1	ADF-11	Defoamer	0.30	%BWOB
1	3	Tail	P50-X1	AFL-50	Fluid Loss	0.20	%BWOB
1	3	Tail	P50-X1	AR-20	Retarder	0.10	%BWOB
1	3	Tail	P50-X1	AVS-10	Viscosifier	0.10	%BWOB
1	3	Tail	P50-X1	AVS-50	Viscosifier	2.00	%BWOB



2 Job Logs

Line	Event	Date (MM/DD/YY)	Time (HH:MM)	Density (lb/gal)	Pump Rate (bpm)	Pump Volume (bbls)	Pipe Pressure (psi)	Comment
1	CALL OUT	8/5/2017	17:00					BJ CREW CALLED OUT ON LOCATION AT 21:00
2	PRE-CONVOY	8/5/2017	17:45					DISCUSSED HAZARDS OF DRIVING
3	DEPART SHOP	8/5/2017	18:00					BJ CREW DEPARTED FOR LOCATION
4	ASSESSMENT OF LOCATION	8/5/2017	20:00					MET WITH CUSTOMER REP WENT OVER WHERE TO SPOT EQUIPMENT AND JOB DETAILS
5	PRE-RIG UP	8/5/2017	21:00					DISCUSSED HAZARDS OF RIGGING UP IRON
6	RIG UP IRON	8/5/2017	21:15					BJ CREW RIGGED UP LOCATION
7	RIG UP COMPLETE	8/5/2017	22:15					RIG UP COMPLETED SAFELY
8	PRE-JOB	8/6/2017	02:13					CONDUCTED STEACS BRIEFING WITH BJ CREW AND SAFETY MEETING WITH RIG CREW
9	FILL LINES	8/6/2017	02:47	8.33	1	1	90	FILLED LINES WITH 2BBL FRESH WATER
10	PRESSURE TEST	8/6/2017	03:09	8.33		1	5000	TESTED LINES TO 5000 PSI
11	DROP BOTTOM PLUG	8/6/2017	03:14					DROPPED BOTTOM PLUG, HAD ISSUES WITH GETTING IT GONE
12	PUMP SPACER	8/6/2017	03:15	11	5	40	100	PUMPED 40 BBL OF 11/LB CD SPACER
13	PUMP LEAD CEMENT	8/6/2017	03:29	12.5	5	337	200	PUMPED 913/SKS,337 BBL OF 12.5/LB,2.07, CUFT/FT,11.81GAL/SK OF LEAD CEMENT
14	PUMP TAIL CEMENT	8/6/2017	04:26	13.5	5	312.5	600	PUMPED 1190/SKS,312.5/BBL OF 13.5/LB,1.47CUFT/FT,7.43GAL/SK OF TAIL CEMENT
15	SHUT DOWN	8/6/2017	05:20					ALL CEMENT PUMPING COMPLETE
16	DROP PLUG	8/6/2017	05:29					TOP PLUG LEFT CEMENTING HEAD
17	CEMENT TO SURFACE	8/6/2017	06:00			83		GOT 20BBL OF SPACER AND 63 BBL OF CEMENT TO SURFACE
18	SLOWED RATE	8/6/2017	06:08		3			SLOWED RATE AT 280 BBL DISPLACED TO 3/BBL MIN TO BUMP
19	BUMP PLUG	1/7/1900	06:11				2700	BUMPED PLUG AT 300 BBL DISPLACED FCP WAS 2000 TO 2700
20	CHECK FLOATS	8/6/2017	06:14					FLOATS HELD 3.5 BBL BACK
21	PRE-RIG DOWN	8/6/2017	06:30					DISCUSSED HAZARDS OF RIG DOWN
22	RIG DOWN IRON	8/6/2017	06:45					BJ CREW RIGS DOWN IRON

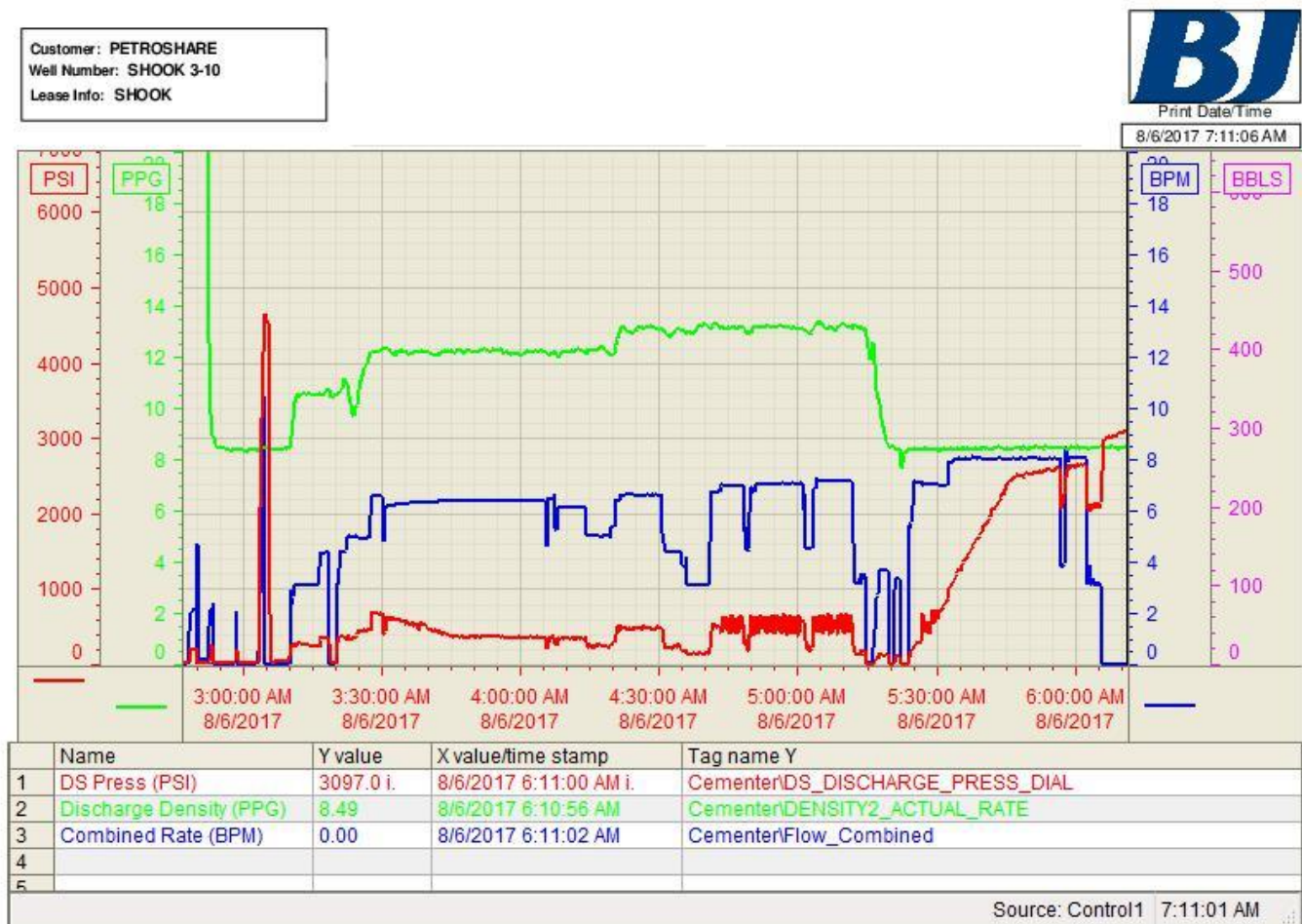


23	RIG DOWN COMPLETE	8/6/2017	07:45					RIG DOWN COMPLETED SAFELY
24	PRE-CONVOY	8/6/2017	08:00					DISCUSSED HAZARDS OF DRIVING
25	DEPART LOCATION	8/6/2017	08:18					BJ CREW DEPARTS FOR SHOP

3 Water Analysis

Metrics	Value	Recommended
Water Source	None	
Temperature	79 °F	50-80 °F
pH Level	6	5.5-8.5
Chlorides	0.009 mg/L	0-3000 mg/L
Total Alkalinity	240	0-1000
Total Hardness	4 mg/L	0-500 mg/L
Carbonates	0 mg/L	0-100 mg/L
Sulfates	<200 mg/L	0-1500 mg/L
Potassium	450 mg/L	0-3000 mg/L
Iron	1 mg/L	0-300 mg/L

4 Pump Diagrams





5 Field Ticket

5.1 Service Charges

Part #	Name	Unit Price	Unit	Quantity	Total
5	Additional Hours	\$1,500.00	hour	0	\$0.00
2	Depth Charge (based on MD)	\$0.50	foot	13729	\$6,864.50
6	Drayage Per Additional Unit Roundtrip	\$160.00	hour	18	\$2,880.00
14	Mobilization, Other	\$600.00	hour	3	\$1,800.00
1	Pumping Charge (includes 8 hours of location time)	\$12,000.00	job	1	\$12,000.00
Subtotal:					\$23,544.50
Discount (%):					% 65.00
Discount (\$):					\$15,303.93
Total:					\$8,240.58

5.2 Material Charges

Part #	Name	Unit Price	Unit	Quantity	Unit	Total
2605	ASR-20	\$0.55	lb	7188	lb	\$3,953.40
2213	AR-31	\$17.50	lb	32	lb	\$560.00
2402	ASF-20	\$70.70	gal	20	gal	\$1,414.00
2408	ASF-80	\$103.20	gal	20	gal	\$2,064.00
2901	AVS-10	\$52.05	lb	32	lb	\$1,665.60
2002	AC3-10	\$29.00	sack	913	sack	\$26,477.00
2703	ABX-30	\$22.50	lb	344	lb	\$7,740.00
2504	ADF-11	\$8.60	lb	258	lb	\$2,218.80
2301	AFL-10	\$32.50	lb	258	lb	\$8,385.00
2213	AR-31	\$17.50	lb	172	lb	\$3,010.00
2901	AVS-10	\$52.05	lb	86	lb	\$4,476.30
2001	ACG-10	\$28.00	sack	595	sack	\$16,660.00
2602	AFA-10	\$0.11	lb	44905	lb	\$4,939.55
2504	ADF-11	\$8.60	lb	303	lb	\$2,605.80
2308	AFL-50	\$33.50	lb	202	lb	\$6,767.00
2202	AR-20	\$25.40	lb	101	lb	\$2,565.40
2901	AVS-10	\$52.05	lb	101	lb	\$5,257.05
2905	AVS-50	\$0.40	lb	2017	lb	\$806.80
2502	ADF-20	\$107.00	gal	5	gal	\$535.00
Subtotal:						\$102,100.70
Discount (%):						% 65.00
Discount (\$):						\$66,365.46
Total:						\$35,735.25



5.3 Casing Equipment Charges

Part #	Name	Unit Price	Unit	Quantity	Unit	Total
50153	Davis Lynch 5 1/2" Bottom Plug	\$306.00	each	1	each	\$306.00
50152	Davis Lynch 5 1/2" Top Plug	\$210.00	each	1	each	\$210.00
Subtotal:						\$516.00
Discount (%):						% 60.00
Discount (\$):						\$309.60
Total:						\$206.40

5.4 Grand Total

Services	Materials	Casing Equipment	Grand Total
\$8,240.58	\$35,735.25	\$206.40	\$44,182.22