



Petroshare Corporation

PRODUCTION POST JOB REPORT

Shook 3-10-2NBH 05-001-09971
S:3 T:1S R:67W Adams CO

CallSheet #: 930
Proposal #: 13406



PRODUCTION Post Job Report

Attention: Mr. Bill Lloyd | (303) 500-1160 | blloyd@petroshare.com
Petroshare Corporation
9635 Maroon Circle, Ste 400 | Englewood, CO 80112

Dear Mr. Lloyd,

Thank you for the opportunity to provide cementing services on this well. BJ Services strives to achieve complete customer satisfaction. If you have any questions regarding the services or data provided, please contact BJ Services at any time.

Sincerely,

Oscar Medrano

Technical Specialist-II | (307) 996-6222 | Oscar.Medrano@bjservices.com

Field Office 1716 East Allison Rd., Cheyenne WY, 82007
Phone: (307) 638-5585

Sales Office 475 17th St. Suite 460 Denver Co., 80202
Phone: (303) 296-1158



Table of Contents

1 Job Details & Summary	3
1.1 Geometry	3
1.2 Equipment / People	3
1.3 Timing	3
1.4 General Job Information	3
1.5 Well Fluid Details	3
1.6 Job Details	3
1.7 Job Details (cont.)	3
1.8 Circulation	4
1.9 Job Execution Information	4
1.10 Job Fluid Details	4
2 Job Logs	6
3 Water Analysis	7
4 Pump Diagrams	7
5 Field Ticket	8
5.1 Service Charges	8
5.2 Material Charges	8
5.3 Casing Equipment Charges	9
5.4 Grand Total	9

1 Job Details & Summary

1.1 Geometry

Type	Function	OD (in)	ID (in)	Weight (lb/ft)	Thread	Top (ft)	Bottom (ft)	Excess (%)
Casing	Outer	9.625	8.921	36	n/a	0	1835	0
Open Hole	Outer	n/a	8.5	n/a	n/a	1835	12853	15
Casing	Inner	5.5	4.778	20	n/a	0	12838	0

1.2 Equipment / People

Unit Type	Unit	Employee #1	Employee #2	Mileage
Silo	654			
Silo	664			
Bulk Trailer	502	Schuebel, Kasey		182
Cement Pump	101	Kresge, Adam	Beal, Scott	182
Light Duty Pickups	5	Bell, Wesley		182

1.3 Timing

Event	Date/Time
Call Out	6/21/2017 21:00
Depart Facility	6/21/2017 22:45
On Location	6/22/2017 00:45
Rig Up Iron	6/22/2017 01:00
Job Started	6/22/2017 11:32
Job Completed	6/22/2017 14:49
Rig Down Iron	6/22/2017 15:00
Depart Location	6/22/2017 16:00

1.4 General Job Information

Metrics	Value
Well Fluid Density	10.4 lb/gal
Well Fluid Type	OBM
Rig Circulation Vol	N/A bbls
Rig Circulation Time	2 hours
Calculated Displacement	283 bbls
Actual Displacement	283 bbls
Total Spacer to Surface	40 bbls
Total CMT to Surface	20 bbls

1.5 Well Fluid Details

Metrics	Value
Plastic Viscosity	40
Yield Point	6
10 sec. SGS	7
10 min. SGS	19
30 min. SGS	29
Filtrate	8
Flow Line Temp.	149

1.6 Job Details

Metrics	Value
Flare Prior to Job	No
Flare During Job	No
Flare at End of Job	No
Well Full Prior to Job	Yes
Well Fluid Density Into Well	10.4 lb/gal
Well Fluid Density Out of Well	10.4 lb/gal

1.7 Job Details (cont.)

Metrics	Value
BHCT	228 °F
BHST	228 °F



1.8 Circulation

Lost Circulation Experienced
No

1.9 Job Execution Information

Job	Fluid	Product	Function	Density (lb/gal)	Yield (ft ³ /sk)	Water Rq. (gal/sk)	Water Rq. (gal/bbl)	Volume (sks)	Volume (bbl)	Top (ft)
1	1	CD Spacer	Spacer	11.00			32.73		40.00	0
1	2	ALTCem P100-X2	Lead	12.50	2.07	11.81		970.00	357.69	0
1	3	ALTCem P50-X1	Tail	13.50	1.47	7.43		941.00	247.14	7578
1	4	Water	DisplacementFinal	8.33			42.00		283.00	0

1.10 Job Fluid Details

Job	Fluid	Type	Fluid	Product	Function	Conc.	Uom	Start (gal)	End (gal)	Used (gal)
1	1	Spacer	CD Spacer	ASR-20	StrengthRetrogression	179.68	lb/bbl			
1	1	Spacer	CD Spacer	AR-31	Retarder	0.79	lb/bbl			
1	1	Spacer	CD Spacer	ASF-20	Surfactant	0.50	gal/bbl	20	0	20
1	1	Spacer	CD Spacer	ASF-80	Surfactant	0.50	gal/bbl	20	0	20
1	1	Spacer	CD Spacer	AVS-10	Viscosifier	0.80	lb/bbl			
1	2	Lead	ALTCem P100-X2	AC3-10	Cement	100.00	%			
1	2	Lead	ALTCem P100-X2	ABX-30	BondEnhancer	0.40	%BWOB			
1	2	Lead	ALTCem P100-X2	ADF-11	Defoamer	0.30	%BWOB			
1	2	Lead	ALTCem P100-X2	AFL-10	FluidLoss	0.30	%BWOB			
1	2	Lead	ALTCem P100-X2	AR-31	Retarder	0.20	%BWOB			
1	2	Lead	ALTCem P100-X2	AVS-10	Viscosifier	0.10	%BWOB			
1	2	Lead	ALTCem P100-X2	ADF-20	Defoamer	0.00		15	10	5
1	3	Tail	ALTCem P50-X1	ACG-10	Cement	50.00	%			
1	3	Tail	ALTCem P50-X1	AFA-10	Extender	50.00	%			



1	3	Tail	ALTCem P50-X1	ADF-11	Defoamer	0.30	%BWOB			
1	3	Tail	ALTCem P50-X1	AFL-50	FluidLoss	0.20	%BWOB			
1	3	Tail	ALTCem P50-X1	AR-20	Retarder	0.10	%BWOB			
1	3	Tail	ALTCem P50-X1	AVS-10	Viscosifier	0.10	%BWOB			
1	3	Tail	ALTCem P50-X1	AVS-50	Viscosifier	2.00	%BWOB			
1	3	Tail	ALTCem P50-X1	ADF-20	Defoamer	0.00		5	0	5

2 Job Logs

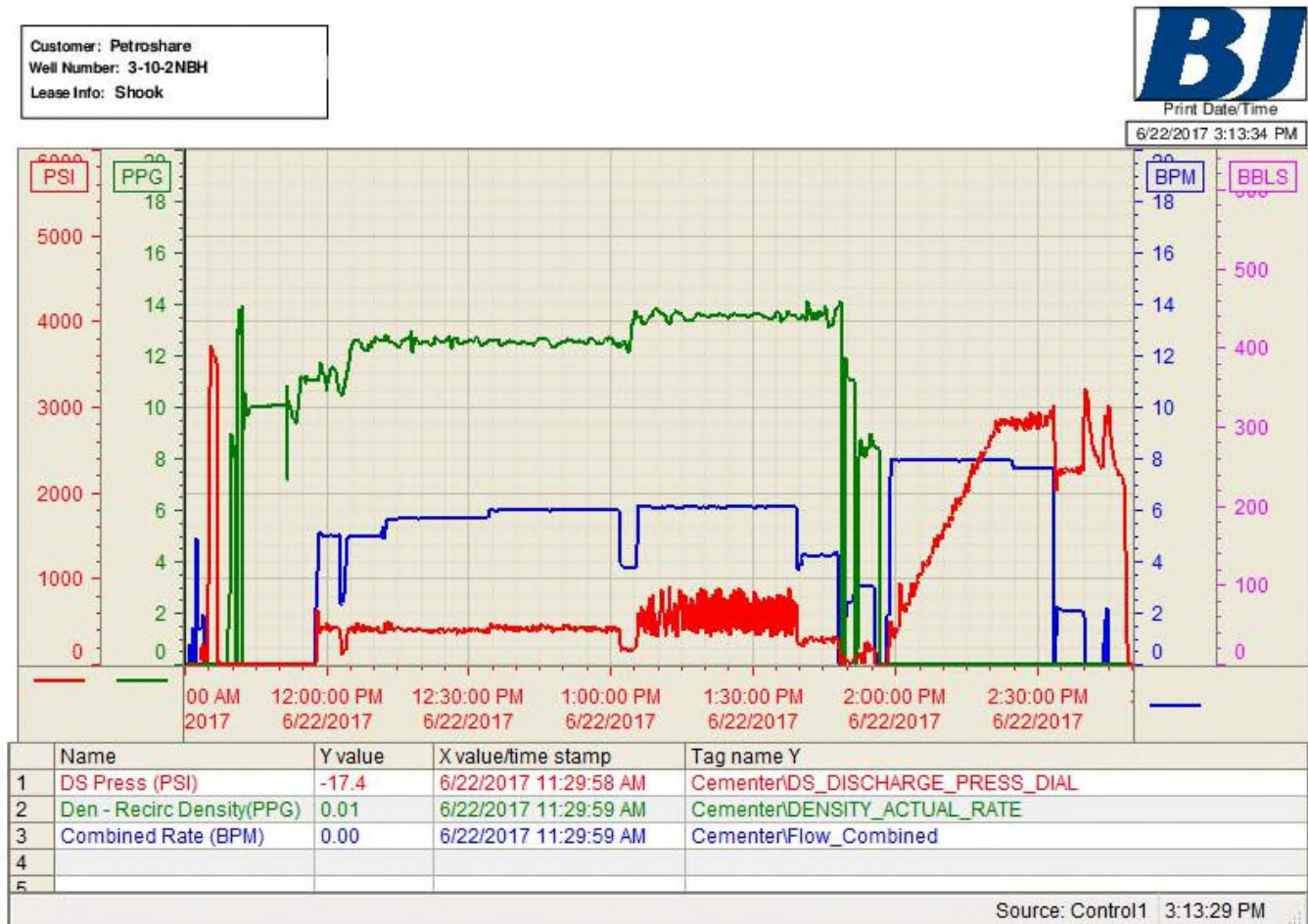
Line	Event	Date (MM/DD/YY)	Time (HH:MM)	Density (lb/gal)	Pump Rate (bpm)	Pump Volume (bbls)	Pipe Pressure (psi)	Comment
1	Arrive on location	6/22/2017	00:45					requested time on location was 03:00
2	Spot/Rig IN	6/22/2017	01:00					Spot and rig in all pump and bulk equipment
3	Waiting	6/22/2017	03:00					Wait for rig to finish running casing
4	Safety meeting	6/22/2017	11:00					hold safety meeting to review job procedure and job hazards.
5	Fill lines	6/22/2017	11:32	8.34	2	2	200	Drop bottom rubber plug and fill lines with 2bbls fresh water
6	Pressure test	6/22/2017	11:35	8.34			3700	Test all lines to 3700psi. No leaks
7	Pump	6/22/2017	11:57	11	5	40	430	Mix and pump 40bbls of spacer at 11ppg
8	Pump Lead Cement	6/22/2017	12:07	12.5	6	357.7	400	Mix and pump 37.7bbls of lead cement at 12.5ppg, Y: 2.07, WR: 11.81, 970sks
9	Pump Tail Cement	6/22/2017	13:07	13.5	6	247.1	750	Mix and pump 247.1bbls of Tail cement at 13.5ppg, Y: 1.47, WR: 7.43, 941sks. Top of tail cement at 6833'
10	Shut Down/Drop Plug	6/22/2017	13:48					Finish mixing, shut in manifold and open wash out line. Clean pumps and lines. Drop Top rubber plug
11	Start Displacement	6/22/2017	13:57	8.34				Total displacement is 283bbls of fresh water
12	Pump	6/22/2017	14:05	8.34	8	50	700	50bbls of displacement away
13	Pump	6/22/2017	14:11	8.34	8	50	1300`	100bbls of displacement away
14	Pump	6/22/2017	14:17	8.34	8	50	2000	150bbls of displacement away
15	Pump	6/22/2017	14:23	8.34	8	50	2400	200bbls of displacement away, Spacer to surface at 223bbls away
16	Pump	6/22/2017	14:30	8.34	8	50	2000	250bbls of displacement away
17	Land Plug	6/22/2017	14:40	8.34	2	33	1800	Land plug, Final circulating pressure was 1800 psi and plug was bumped to 2300psi
18	Check Floats	6/22/2017	14:49	8.34				Floats held, 1bbls back to pump truck
19	Job complete	6/22/2017	14:49					
20	Rig Out	6/22/2017	15:00					
21	Leave Location	6/22/2017	16:00					



3 Water Analysis

Metrics	Value	Recommended
Water Source	Upright Rig Tank	
Temperature	70 °F	50-80 °F
pH Level	7	5.5-8.5
Chlorides	100 mg/L	0-3000 mg/L
Total Alkalinity	70	0-1000
Total Hardness	250 mg/L	0-500 mg/L
Carbonates	75 mg/L	0-100 mg/L
Sulfates	400 mg/L	0-1500 mg/L
Potassium	300 mg/L	0-3000 mg/L
Iron	0 mg/L	0-300 mg/L

4 Pump Diagrams





5 Field Ticket

5.1 Service Charges

Part #	Name	Unit Price	Unit	Quantity	Total
5	Additional Hours	\$1,500.00	hour	3	\$4,500.00
2	Depth Charge (based on MD)	\$0.50	foot	12853	\$6,426.50
6	Drayage Per Additional Unit Roundtrip	\$160.00	hour	18	\$2,880.00
14	Mobilization, Other	\$600.00	hour	3	\$1,800.00
1	Pumping Charge (includes 8 hours of location time)	\$12,000.00	job	1	\$12,000.00
Subtotal:					\$27,606.50
Discount (%):					% 65.00
Discount (\$):					\$17,944.23
Total:					\$9,662.28

5.2 Material Charges

Part #	Name	Unit Price	Unit	Quantity	Unit	Total
2605	ASR-20	\$0.55	lb	7188	lb	\$3,953.40
2213	AR-31	\$17.50	lb	32	lb	\$560.00
2402	ASF-20	\$70.70	gal	20	gal	\$1,414.00
2408	ASF-80	\$103.20	gal	20	gal	\$2,064.00
2901	AVS-10	\$52.05	lb	32	lb	\$1,665.60
2002	AC3-10	\$29.00	sack	970	sack	\$28,130.00
2703	ABX-30	\$22.50	lb	365	lb	\$8,212.50
2504	ADF-11	\$8.60	lb	274	lb	\$2,356.40
2301	AFL-10	\$32.50	lb	274	lb	\$8,905.00
2213	AR-31	\$17.50	lb	183	lb	\$3,202.50
2901	AVS-10	\$52.05	lb	92	lb	\$4,788.60
2001	ACG-10	\$28.00	sack	471	sack	\$13,188.00
2602	AFA-10	\$0.11	lb	35509	lb	\$3,905.99
2504	ADF-11	\$8.60	lb	240	lb	\$2,064.00
2308	AFL-50	\$33.50	lb	160	lb	\$5,360.00
2202	AR-20	\$25.40	lb	80	lb	\$2,032.00
2901	AVS-10	\$52.05	lb	80	lb	\$4,164.00
2905	AVS-50	\$0.40	lb	1595	lb	\$638.00
2502	ADF-20	\$107.00	gal	15	gal	\$1,605.00
Subtotal:						\$98,208.99
Discount (%):						% 65.00
Discount (\$):						\$63,835.84
Total:						\$34,373.15



5.3 Casing Equipment Charges

Part #	Name	Unit Price	Unit	Quantity	Unit	Total
11055	Bottom Plugs 5 ½"	\$269.97	each	1	each	\$269.97
10055	Top Plugs 5 ½"	\$136.65	each	1	each	\$136.65
Subtotal:						\$406.62
Discount (%):						% 60.00
Discount (\$):						\$243.97
Total:						\$162.65

5.4 Grand Total

Services	Materials	Casing Equipment	Grand Total
\$9,662.28	\$34,373.15	\$162.65	\$44,198.07