



Petroshare Corporation

SURFACE POST JOB REPORT

Shook 3-10-2CDH 05-001-09973
S:3 T:1S R:67W Adams CO

CallSheet #: 710
Proposal #: 13156



SURFACE Post Job Report

Attention: Mr. Bill Lloyd | (303) 500-1160 | blloyd@petroshare.com
Petroshare Corporation
9635 Maroon Circle, Ste 400 | Englewood, CO 80112

Dear Mr. Lloyd,

Thank you for the opportunity to provide cementing services on this well. BJ Services strives to achieve complete customer satisfaction. If you have any questions regarding the services or data provided, please contact BJ Services at any time.

Sincerely,

Zen Keith

Technical Specialist-II | (307) 757-7178 | Zen.Keith@bjservices.com

Field Office 1716 East Allison Rd., Cheyenne WY, 82007
Phone: (307) 638-5585

Sales Office 475 17th St. Suite 460 Denver Co., 80202
Phone: (303) 296-1158



Table of Contents

1 Job Details & Summary 3

 1.1 Geometry 3

 1.2 Equipment / People 3

 1.3 Timing 3

 1.4 General Job Information 3

 1.5 Job Details 3

 1.6 Job Details (cont.) 3

 1.7 Circulation 3

 1.8 Job Execution Information 4

 1.9 Job Fluid Details 4

2 Job Logs 5

3 Water Analysis 6

4 Pump Diagrams 7

1 Job Details & Summary

1.1 Geometry

Type	Function	OD (in)	ID (in)	Weight (lb/ft)	Thread	Top (ft)	Bottom (ft)	Excess (%)
Casing	Inner	9.625	8.921	36	LTC	0	1808	0
Casing	Outer	16	15.25	65	n/a	0	40	0
Open Hole	Outer	n/a	13.5	n/a	n/a	40	1804	15

1.2 Equipment / People

Unit Type	Unit	Employee #1	Mileage
Bulk Trailer	509	Mellon, Zacahria	98
Bulk Trailer	508	Scott, Matthew	98
Cement Pump	PPC11250		98
Light Duty Pickups	3	Dewit, Eric	98

1.3 Timing

Event	Date/Time
Call Out	4/11/2017 14:00
Depart Facility	4/11/2017 14:05
On Location	4/11/2017 16:30
Rig Up Iron	4/11/2017 17:30
Job Started	4/11/2017 19:50
Job Completed	4/11/2017 21:32
Rig Down Iron	4/11/2017 21:40
Depart Location	4/11/2017 22:15

1.4 General Job Information

Metrics	Value
Well Fluid Density	8.34 lb/gal
Well Fluid Type	Water
Rig Circulation Vol	150 bbls
Rig Circulation Time	0.5 hours
Calculated Displacement	136 bbls
Actual Displacement	136 bbls
Total Spacer to Surface	20 bbls
Total CMT to Surface	22 bbls
Well Topped Out	No
Top Out Volume	0 bbls

1.5 Job Details

Metrics	Value
Flare Prior to Job	No
Flare During Job	No
Flare at End of Job	No
Well Full Prior to Job	Yes
Well Fluid Density Into Well	8.34 lb/gal
Well Fluid Density Out of Well	8.34 lb/gal

1.6 Job Details (cont.)

Metrics	Value
BHCT	95 °F
BHST	120 °F

1.7 Circulation

Lost Circulation Experienced
No



1.8 Job Execution Information

Job	Fluid	Product	Function	Density (lb/gal)	Yield (ft ³ /sk)	Water Rq. (gal/sk)	Water Rq. (gal/bbl)	Volume (sks)	Volume (bbl)	Top (ft)
1	1	Water	Flush	8.33			42.00		20.00	0
1	2	ALTCem S100-12	Lead	12.00	2.53	14.85		293.00	131.84	0
1	3	ALTCem S100-12	Tail	12.50	2.22	12.58		135.00	53.46	1300
1	4	Water	DisplacementFinal	8.33			42.00		136.00	0

1.9 Job Fluid Details

Job	Fluid	Type	Fluid	Product	Function	Conc.	Uom
1	2	Lead	ALTCem S100-12	AC3-10	Cement	100.00	%
1	2	Lead	ALTCem S100-12	ACL-10	Accelerator	2.00	lb/sk
1	2	Lead	ALTCem S100-12	ACL-20	Accelerator	5.00	%BWOB
1	2	Lead	ALTCem S100-12	ADF-11	Defoamer	0.30	%BWOB
1	2	Lead	ALTCem S100-12	ALC-10	LostCirculation	0.13	lb/sk
1	2	Lead	ALTCem S100-12	AXE-30	Extender	2.00	lb/sk
1	3	Tail	ALTCem S100-12	AC3-10	Cement	100.00	%
1	3	Tail	ALTCem S100-12	ACL-10	Accelerator	2.00	lb/sk
1	3	Tail	ALTCem S100-12	ACL-20	Accelerator	5.00	%BWOB
1	3	Tail	ALTCem S100-12	ADF-11	Defoamer	0.30	%BWOB
1	3	Tail	ALTCem S100-12	ALC-10	LostCirculation	0.13	lb/sk
1	3	Tail	ALTCem S100-12	AXE-30	Extender	2.00	lb/sk

2 Job Logs

Line	Event	Date (MM/DD/YY)	Time (HH:MM)	Density (lb/gal)	Pump Rate (bpm)	Pump Volume (bbls)	Pipe Pressure (psi)	Comment
1	Customer call out	4/11/2017	14:00					Customer calls with an RTS of 1800
2	Leave yard	4/11/2017	14:00					Leave yard
3	Arrive on location	4/11/2017	16:30					Arrive on location rig running casing
4	Spot trucks	4/11/2017	17:15					Spot trucks
5	Safety meeting	4/11/2017	17:25					Pre-rig up safety meeting
6	Rig up	4/11/2017	17:30					Rig up water, bulk, and high pressure line
7	Waiting	4/11/2017	18:00					Waiting for rig to finish running casing
8	Safety meeting	4/11/2017	19:20					Pre-job safety meeting with company man, and rig crew
9	Rig up	4/11/2017	19:40					Rig up head
10	Load lines	4/11/2017	19:58	8.34	3.5	3	60	Load pumps and lines, send bottom plug
11	Pressure test	4/11/2017	20:00	8.34	0	0	3502	Pressure test pumps and lines
12	Pump spacer	4/11/2017	20:03	8.34	5.3	20	91	Pump 20 bbls of fresh water with dye ahead
13	Lead cement	4/11/2017	20:09	12	5.7	131	231	Pump 293 sacks of lead cement @12 ppg
14	Tail cement	4/11/2017	20:34	12.5	5.6	53	218	Pump 135 sacks of tail cement @12.5 ppg
15	Shut down	4/11/2017	20:46					Shut down release top plug
16	Displacement	4/11/2017	20:50	8.34	7.2	0	163	Send plug start fresh water displacement
17	Displacement	4/11/2017	20:58	8.34	7.2	50	287	Fresh water displacement
18	Spacer back	4/11/2017	21:06	8.34	6.7	100	526	Start getting spacer back
19	Cement back	4/11/2017	21:08	8.34	6.7	114	601	Start getting good cement to surface
20	Drop rate	4/11/2017	21:09	8.34	2.5	120	439	Drop rate
21	Land plug	4/11/2017	21:14	8.34	2.5	136	458	Land plug @458 psi, bumped it up to 1049 psi (22 bbls of cement to surface)
22	Casing test	4/11/2017	21:17	8.34			1507	Start casing test
23	Check floats	4/11/2017	21:32	8.34				End casing test, check floats (floats held) 1 bbl back
24	Safety meeting	4/11/2017	21:35					Pre-rig down safety meeting
25	Rig down	4/11/2017	21:40					Rig everything down

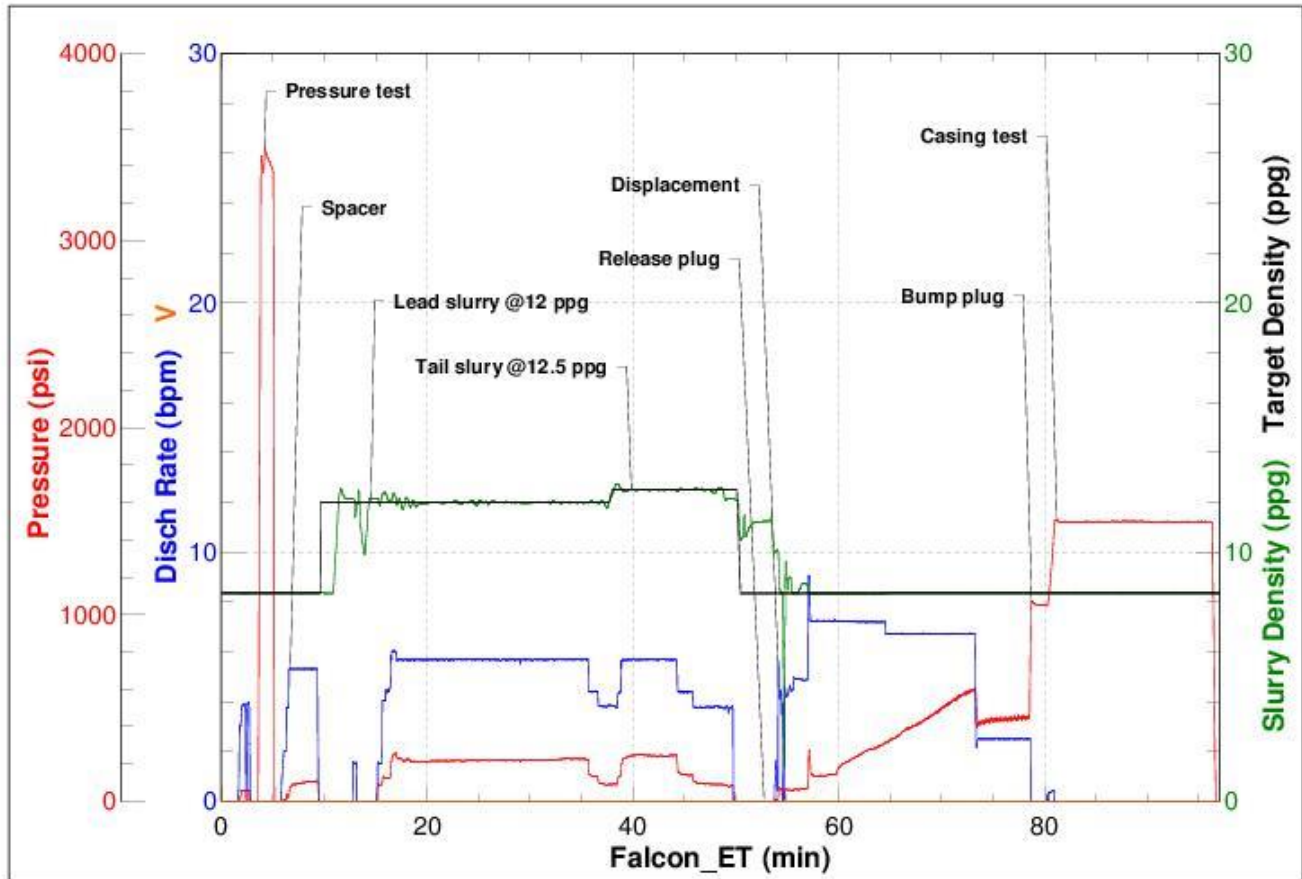


3 Water Analysis

Metrics	Value	Recommended
Water Source	Upright Rig Tank	
Temperature	50 °F	50-80 °F
pH Level	7	5.5-8.5
Chlorides	0 mg/L	0-3000 mg/L
Total Alkalinity	400	0-1000
Total Hardness	>250 mg/L	0-500 mg/L
Carbonates	0 mg/L	0-100 mg/L
Sulfates	<500 mg/L	0-1500 mg/L
Potassium	200 mg/L	0-3000 mg/L
Iron	0 mg/L	0-300 mg/L

4 Pump Diagrams

Job Number: 710
Customer: Petro Share
Well Name: Shook 3-10-2CDH



Job Start: Tuesday, April 11, 2017