



Scale: 5" / 100'  
Measured Depth Log

**Well Name** SHOOK 3-10-2CDH Horizontal

**Location** NWSE SECTION 3 T1S R67W

**State** COLORADO

**County** ADAMS

**Country** USA

**Rig Number** ENSIGN 145

**API Number** 05-001-09973

**AFE #** 1700006

**Geographic Region** DJ BASIN

**Field** WATTENBERG

**Spud Date** 4/11/2017

**Drilling Completed** 6/8/2017

**Surface Coordinates** NWSE SECTION 3, T1S, R67W

2058' FSL x 2244' FEL

**Bottom Hole Coordinates**

SEC 10, T1S, R67W  
340' FSL x 1398' FWL

**Ground Elevation** 5098'

**K.B. Elevation** 5111'

**Logged Interval** 7800' To 13140'

**Total Depth** 5340'

**Formation** CODELL SANDSTONE

**Type of Drilling Fluid** OIL BASED MUD

## Operator

**Company** PetroShare Corporation

**Address** 7200 S Alton Way  
Englewood, CO 80112



## Geologist

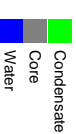
**Name** WEDGE HOWLAND, SAGE BETTS

**Company** Terra Guidance

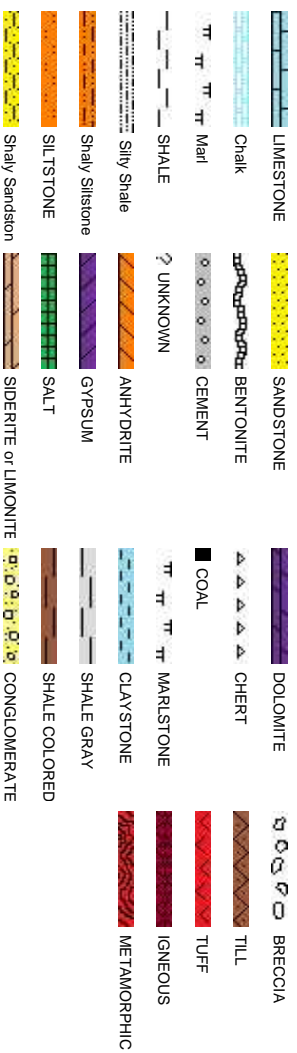
**Address** 1298 O Road  
Loma CO 81524  
(970) 260-5408



## Zone Color Coding

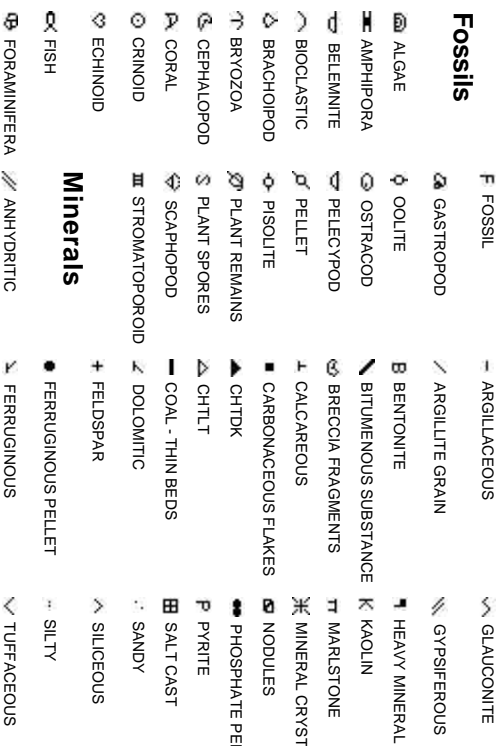


## Rock Types

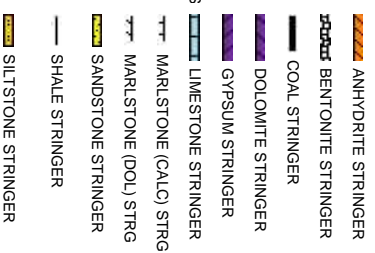


## Accessories

## Fossils



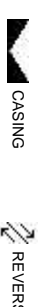
**Stringer**



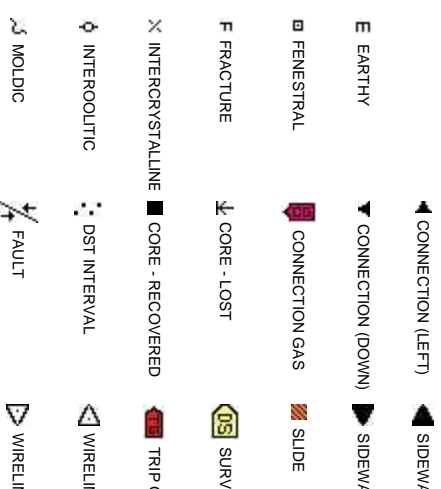
## Other



## Engineering



## Porosity



# er Symbols

FORMATION TOP L LITHOGRAPHIC

## Rounding

HOW MX MICROXLN

PTH A ANGULAR MS MUDSTONE

L FAULT R ROUNDED PS PACKSTONE

OW B SUBANG WS WACKESTONE

JURNED STRATA T SUBRND

## Sorting

SE FAULT

## Textures

ALL CORE (LEFT) M MODERATE

ALL CORE (RIGHT) BS BOUNDSTONE P POOR

C CHALKY W WELL

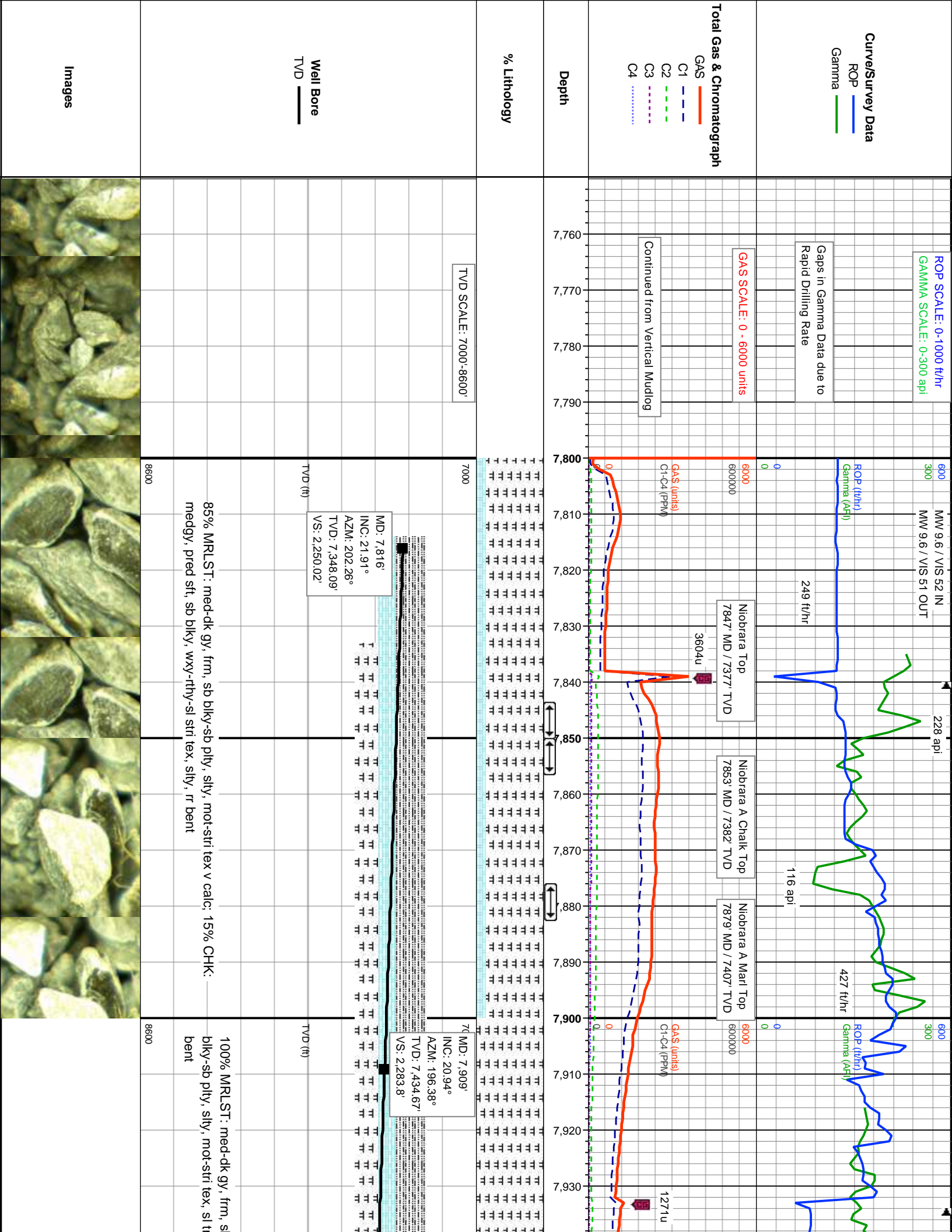
EY CX CRYPTOXLN

EGAS E EARTHY

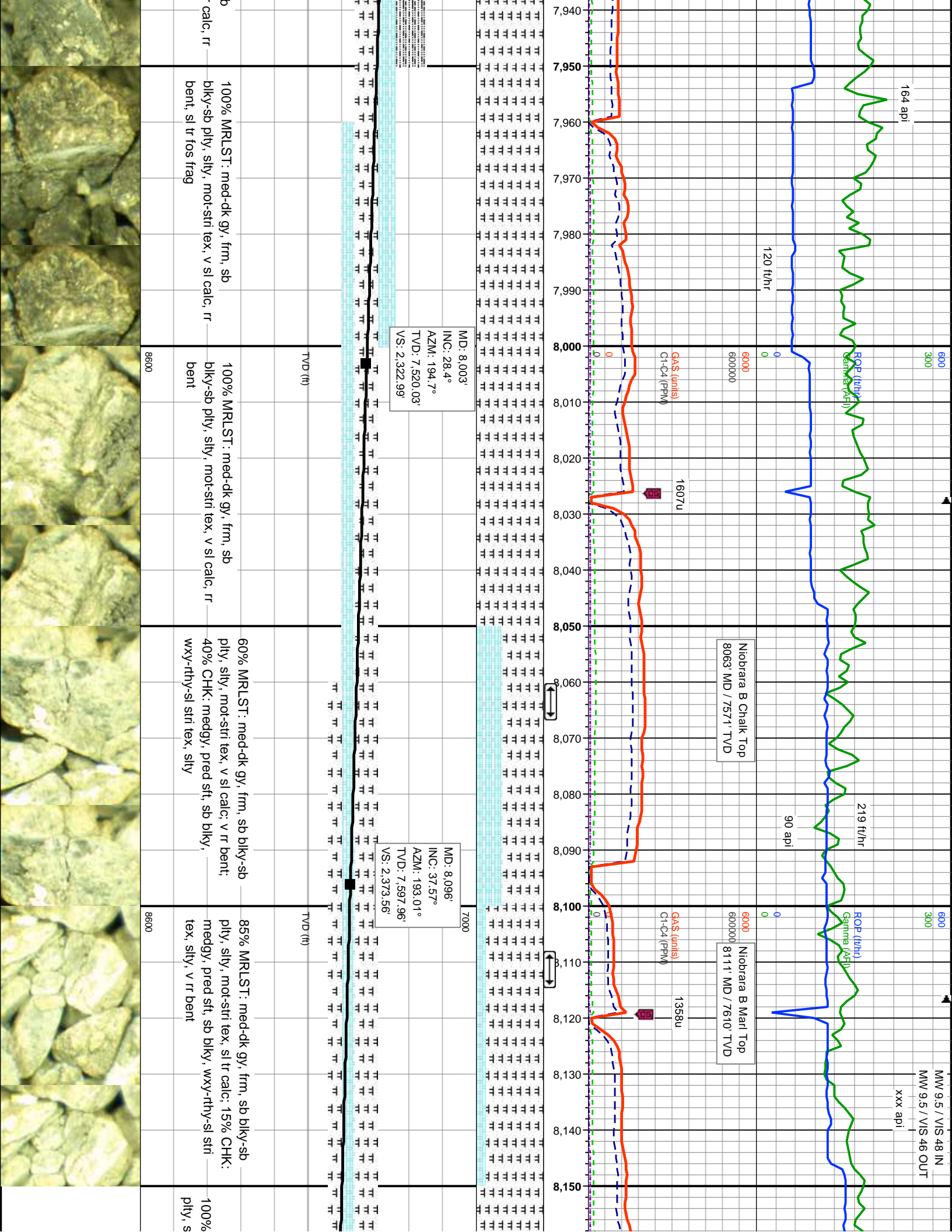
NE TESTED - LEFT FX FINELYXLN

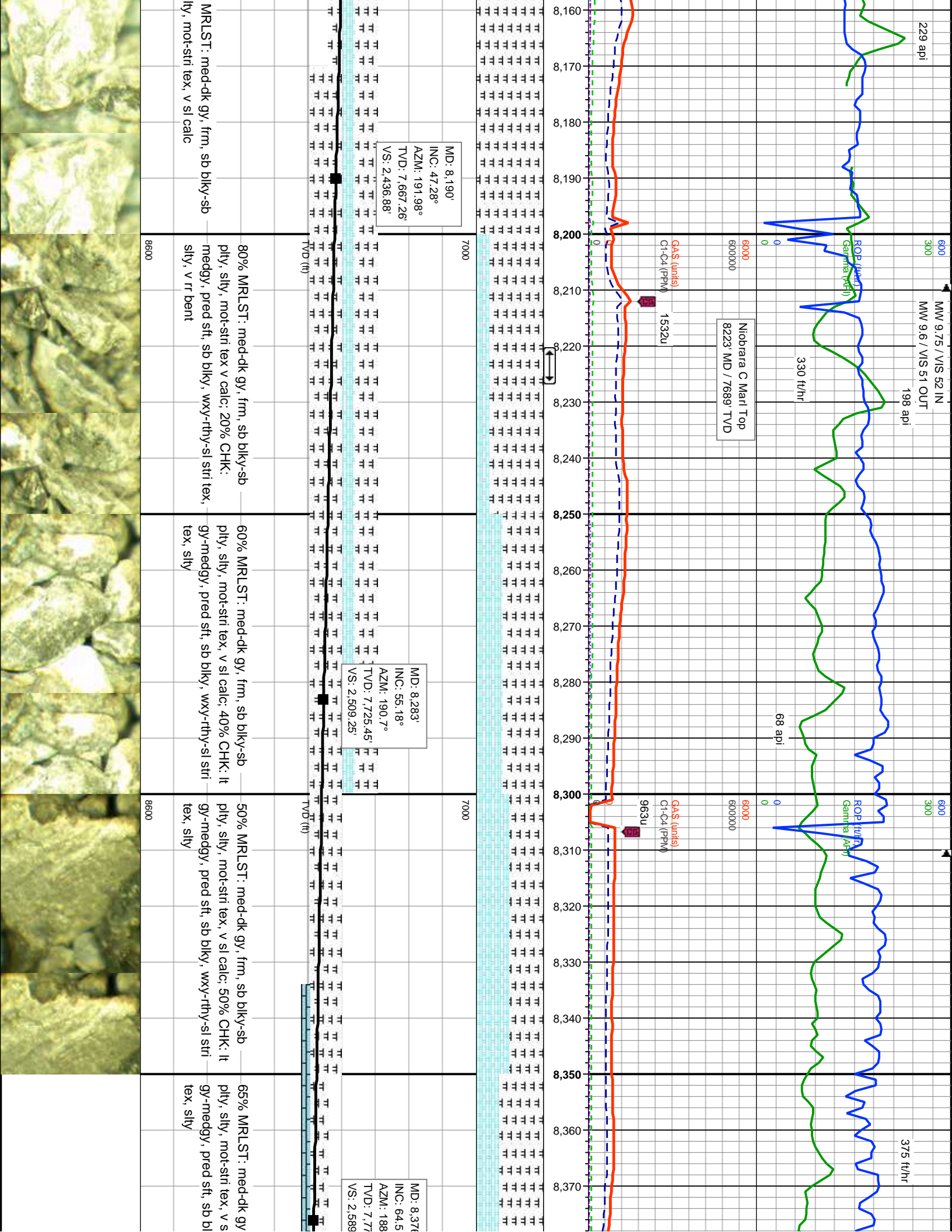
NE TESTED - RT GS GRAINSTONE

## ConnectionGas(Vert)

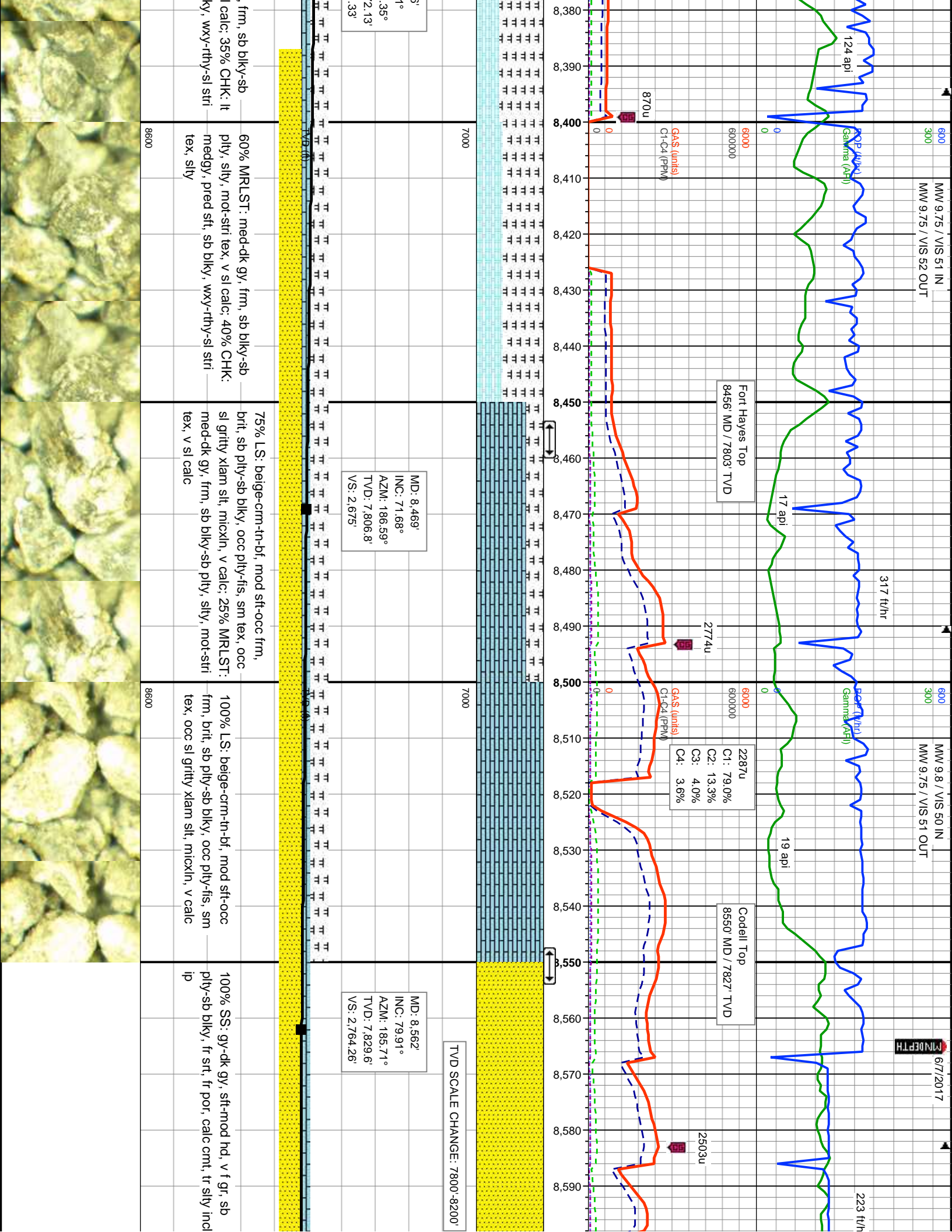








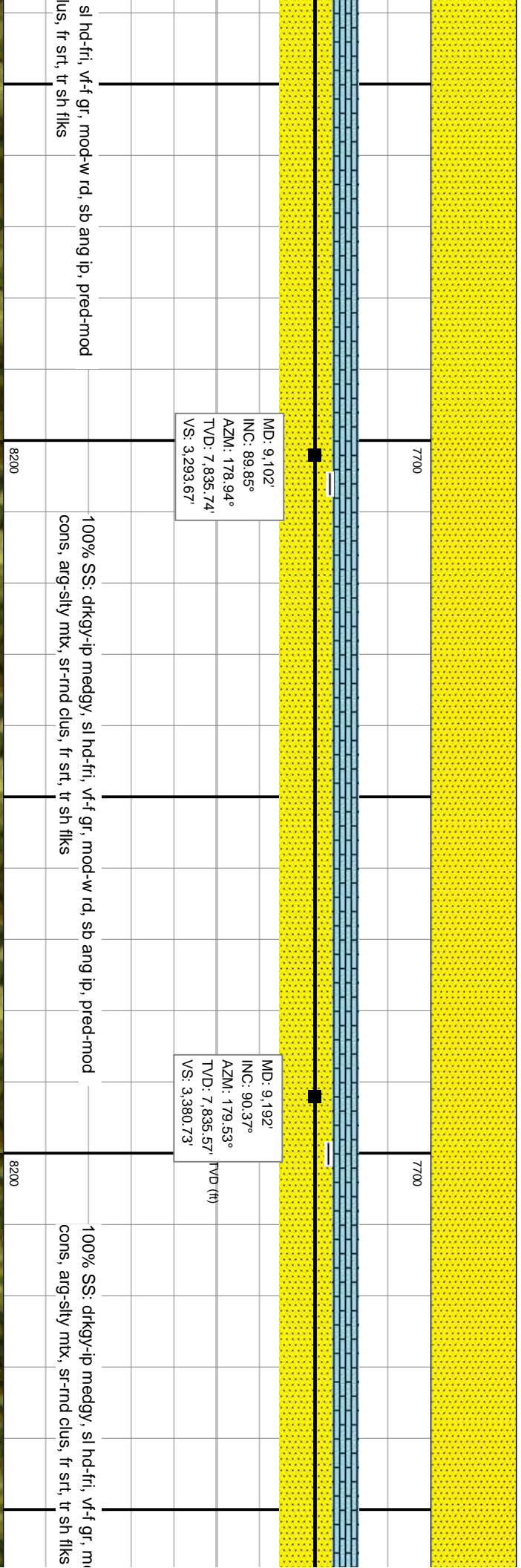
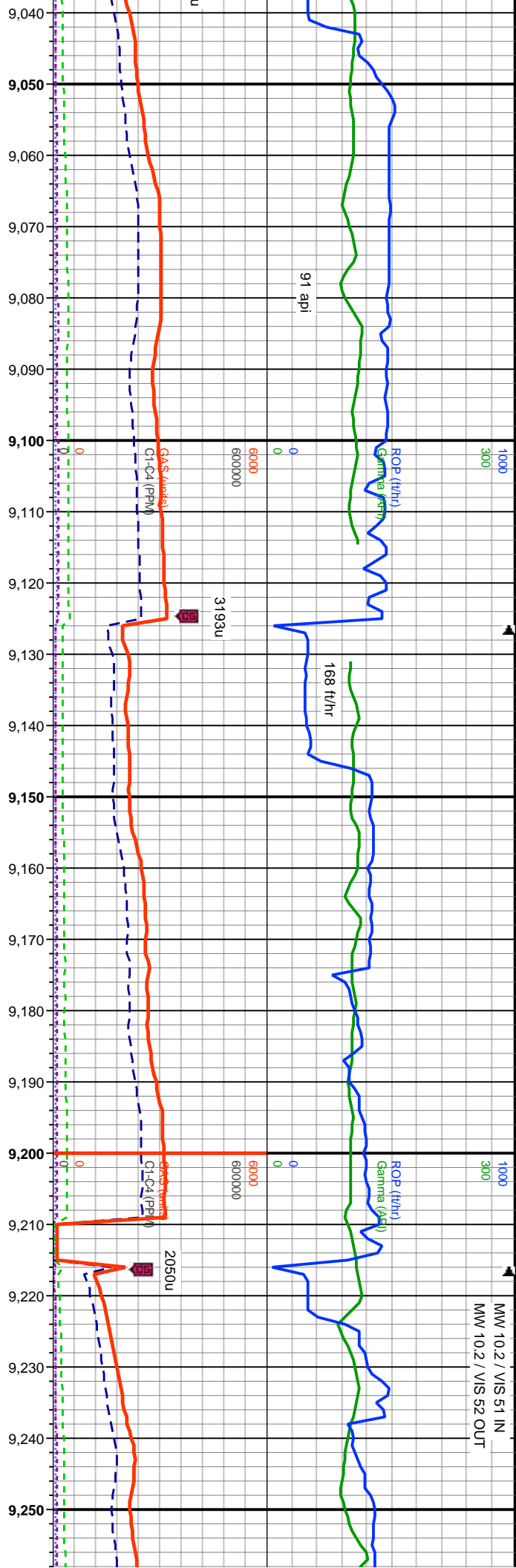




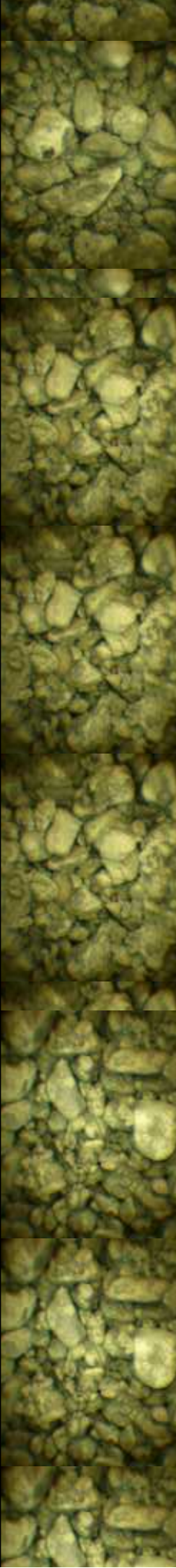
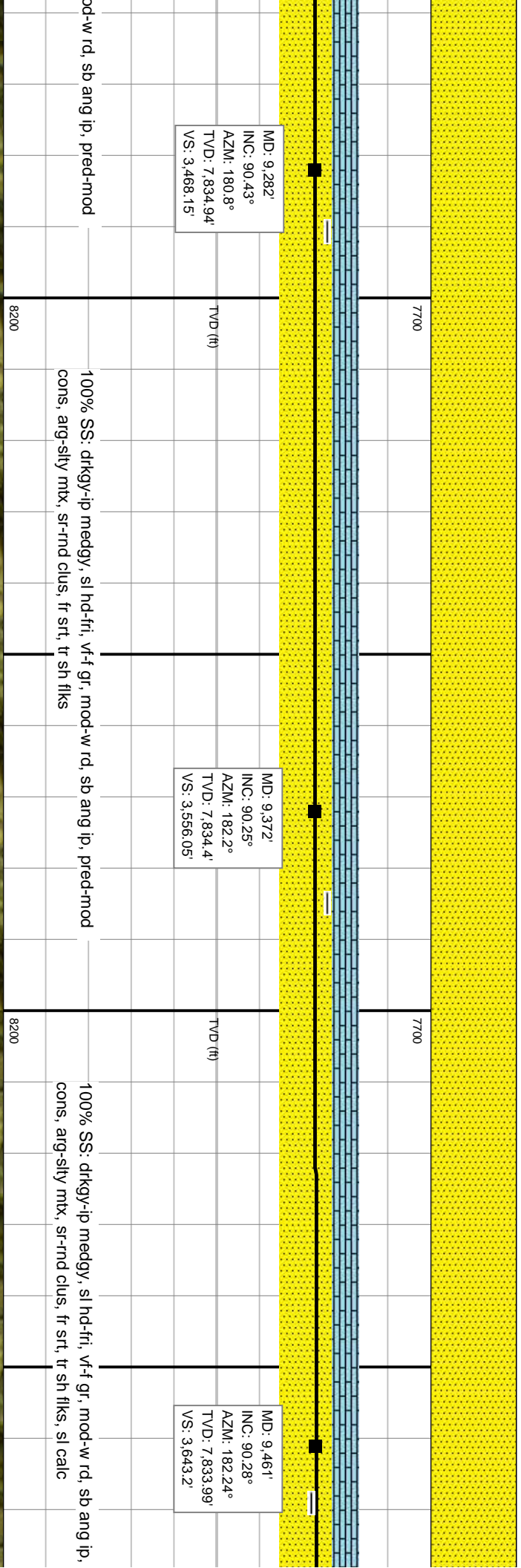
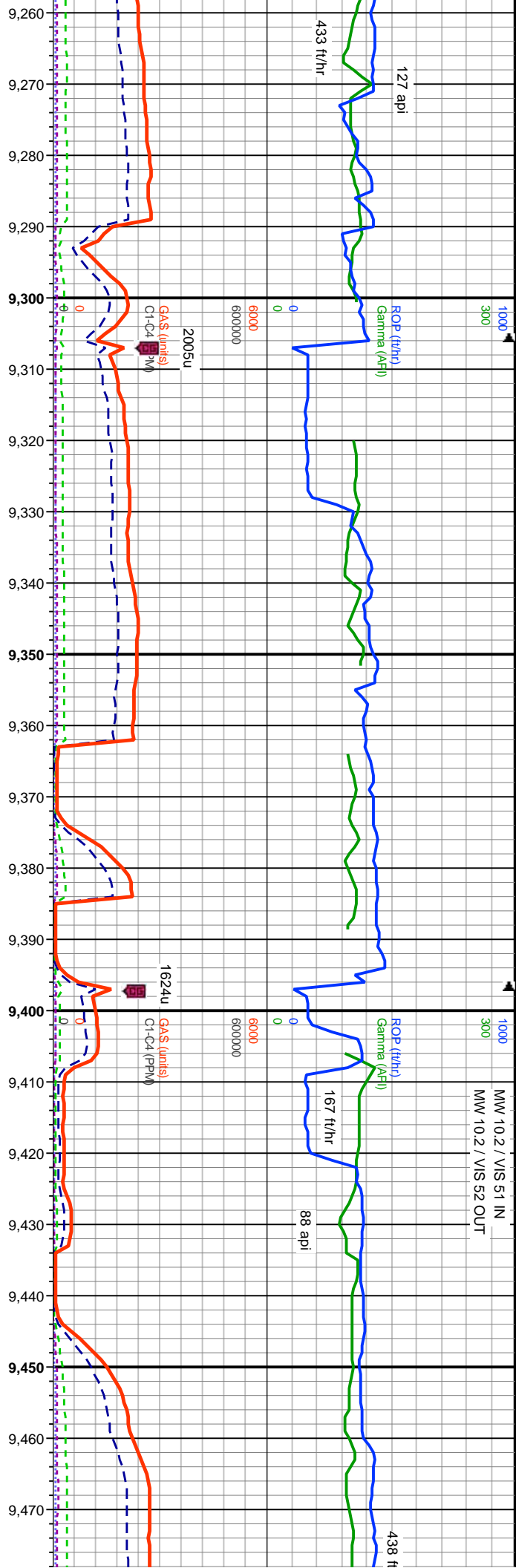




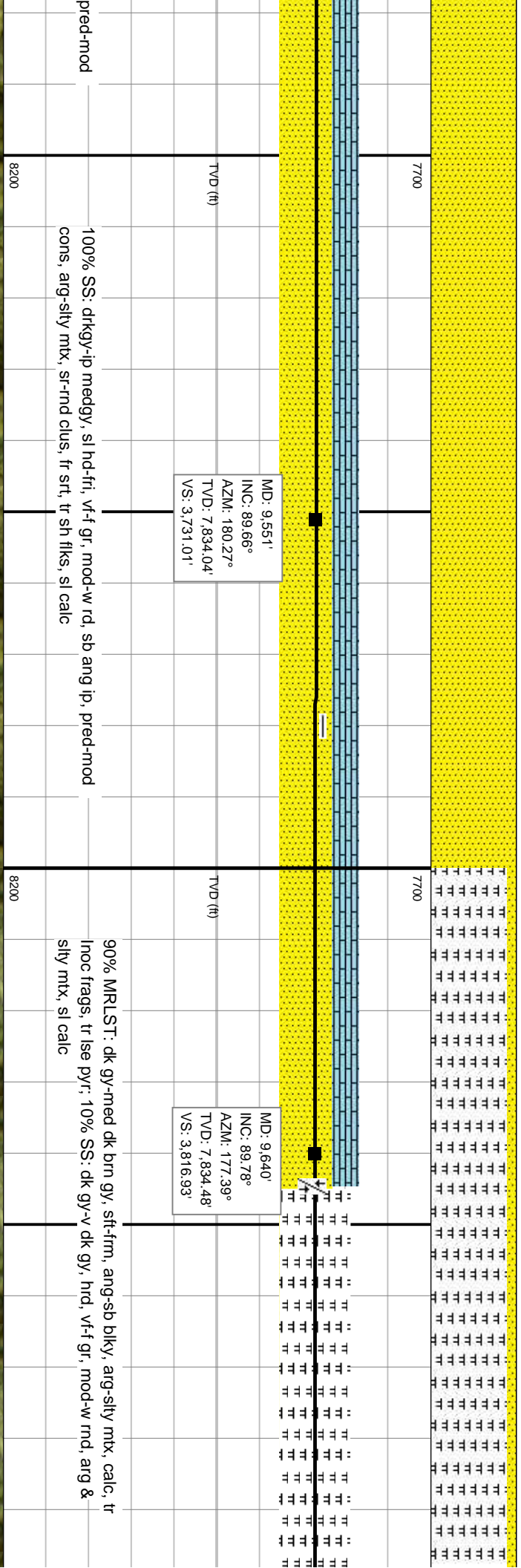
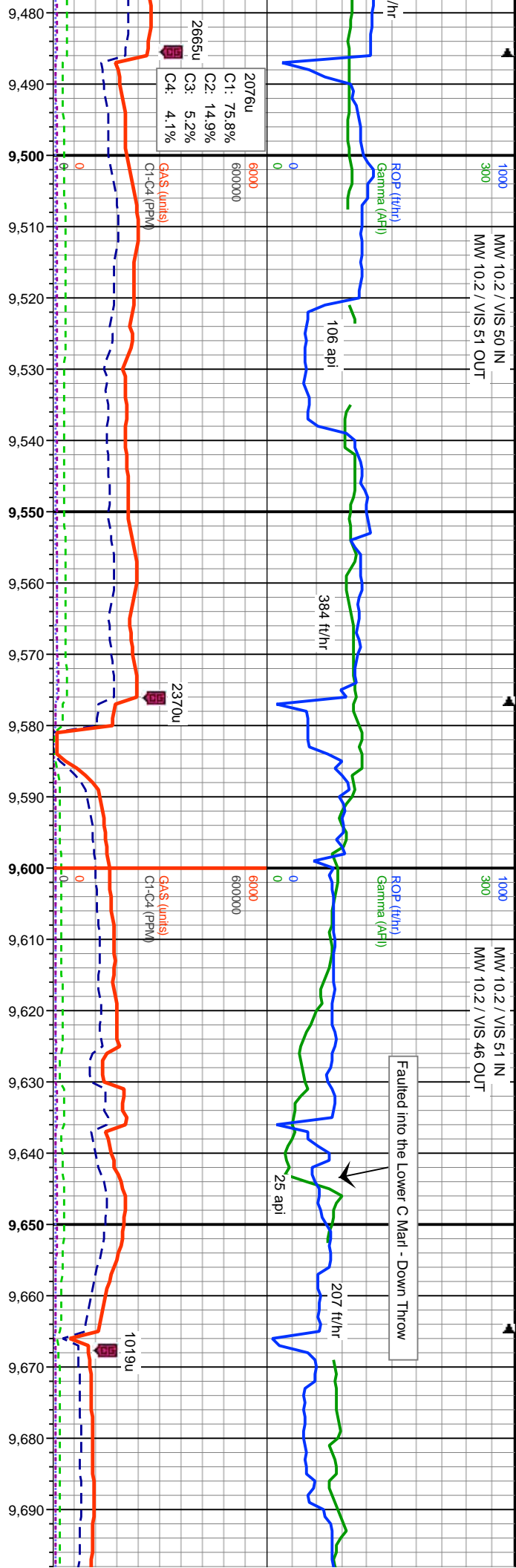


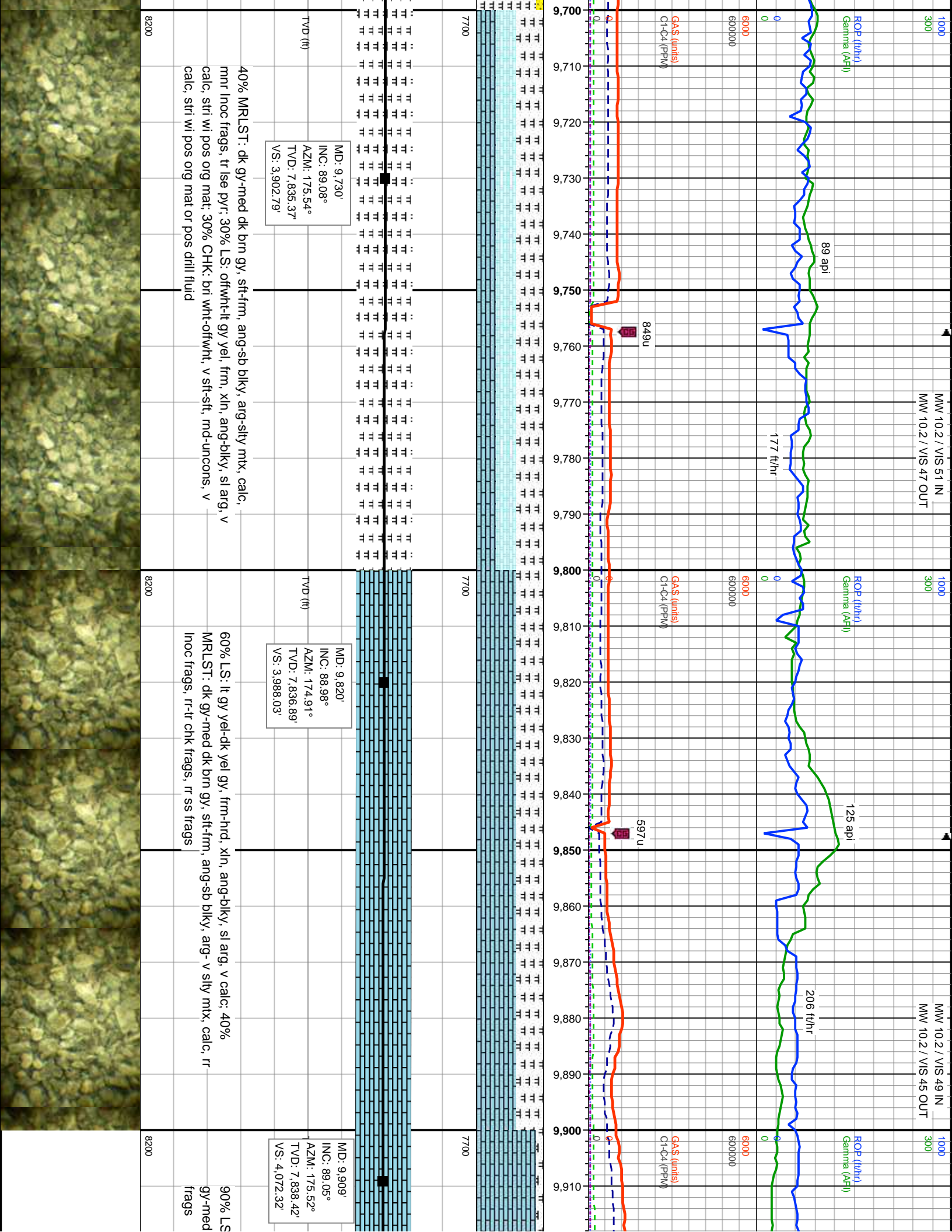






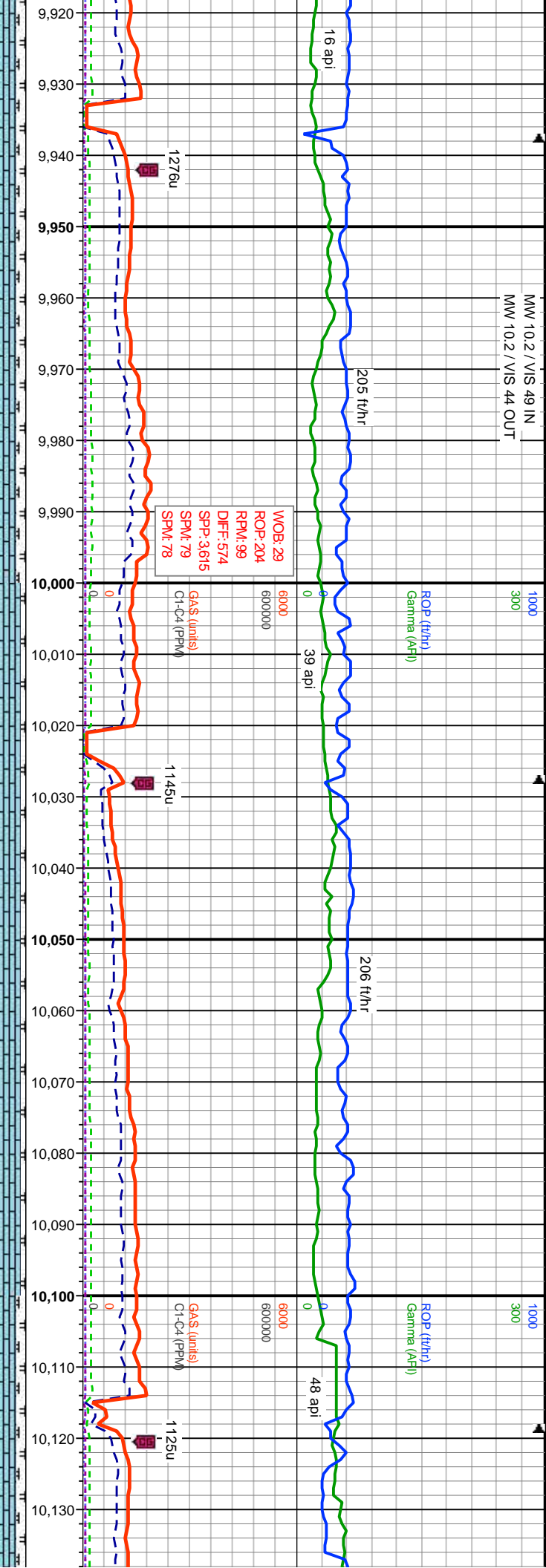








MW 10.2 / VIS 49 IN  
MW 10.2 / VIS 44 OUT



WOB: 29  
ROP: 204  
RPM: 99  
DIFF: 574  
SPP: 3.615  
SPM: 79  
SPM: 78

GA\$ (units)  
C1-C4 (PPM)

ROP (ft/hr)  
Gamma (API)

MD: 9,999'  
INC: 89.08°  
AZM: 177.3°  
TVD: 7,839.89'  
VS: 4,158.14'

95% LS: yel gy-dk yel gy, hrd- v hrd, xln, ang-biky, sl arg, v calc, 10% MRLST: dk gy-med dk brn gy, frm-hrd, sb biky-rnd, arg-v silty mtx, calc, tr chk frags, tr inoc frags

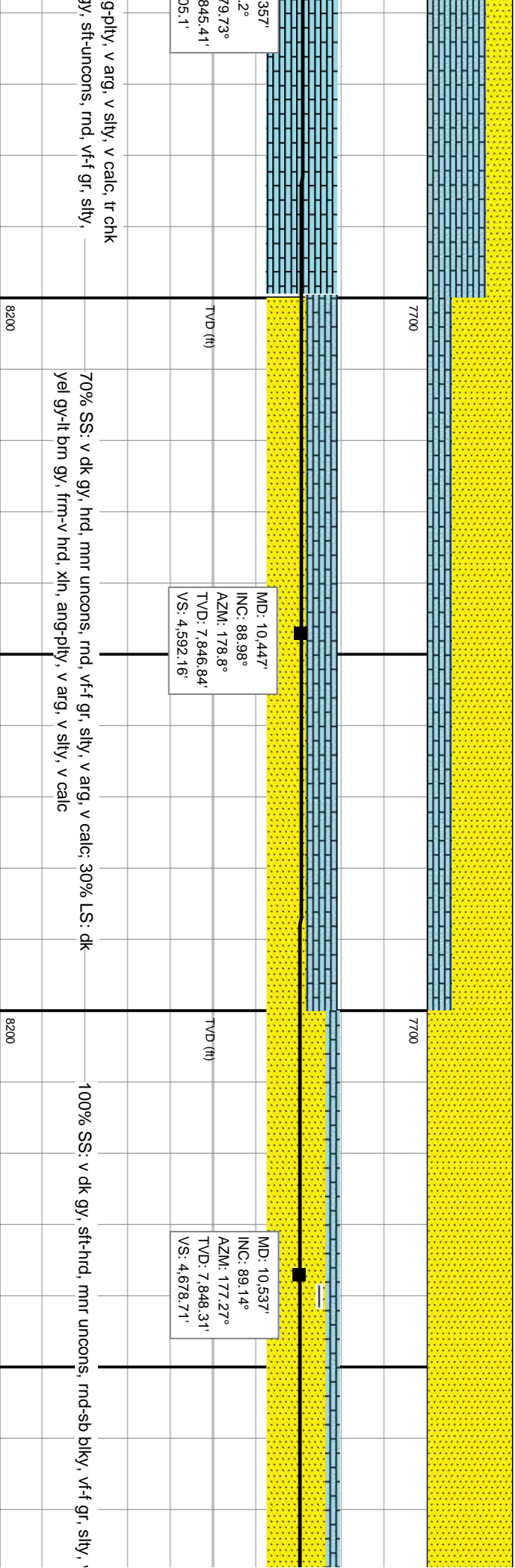
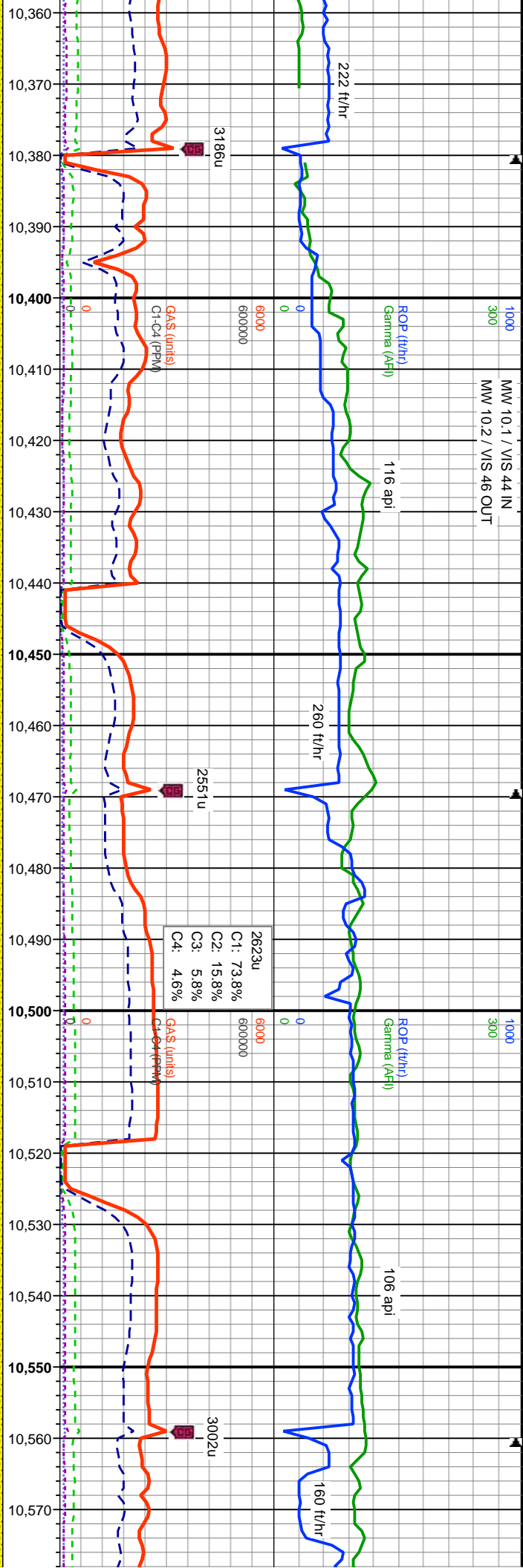
MD: 10,088'  
INC: 89.02°  
AZM: 179.29°  
TVD: 7,841.37'  
VS: 4,243.84'

TVD (ft)

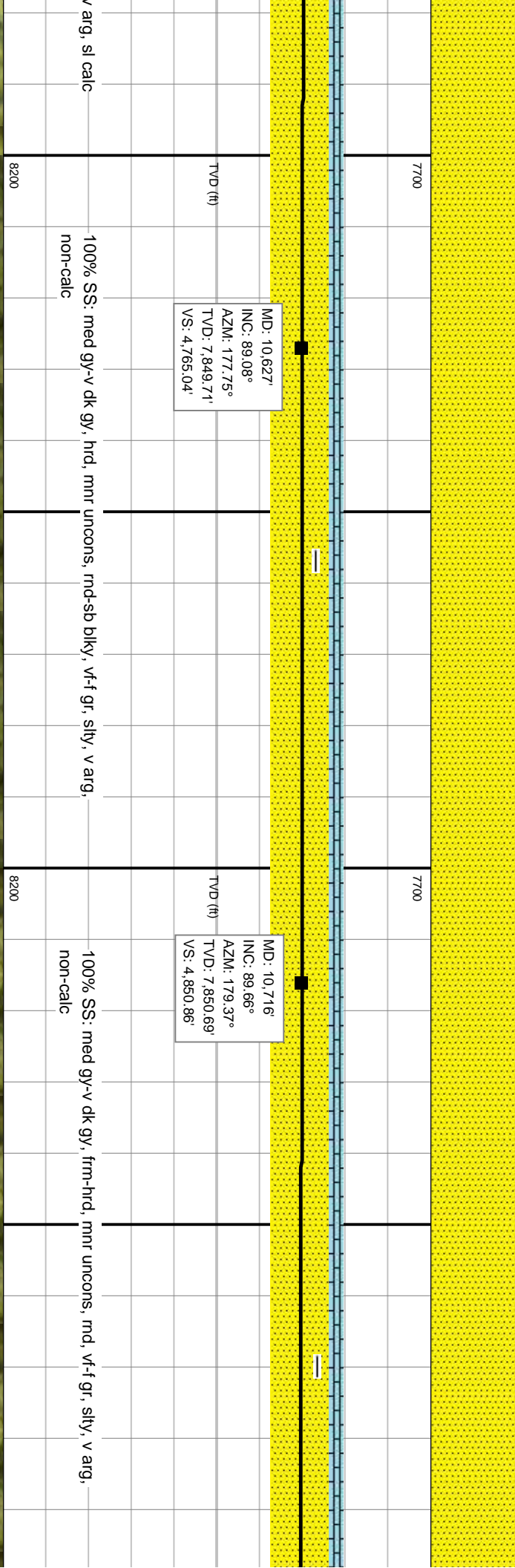
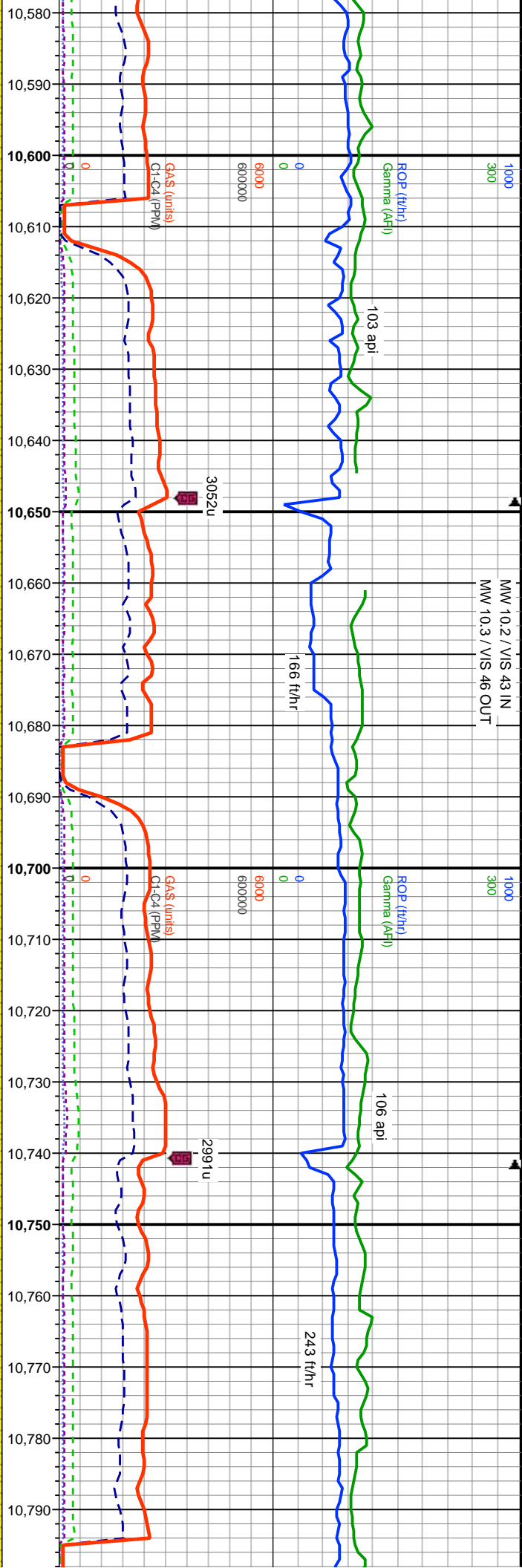
90% LS: lt gy yel-dk yel gy, MRLST: dk gy-med dk brn gy, frm-hrd, sb biky-rnd, arg-v silty mtx, calc, tr chk frags, intbdd w/ ls



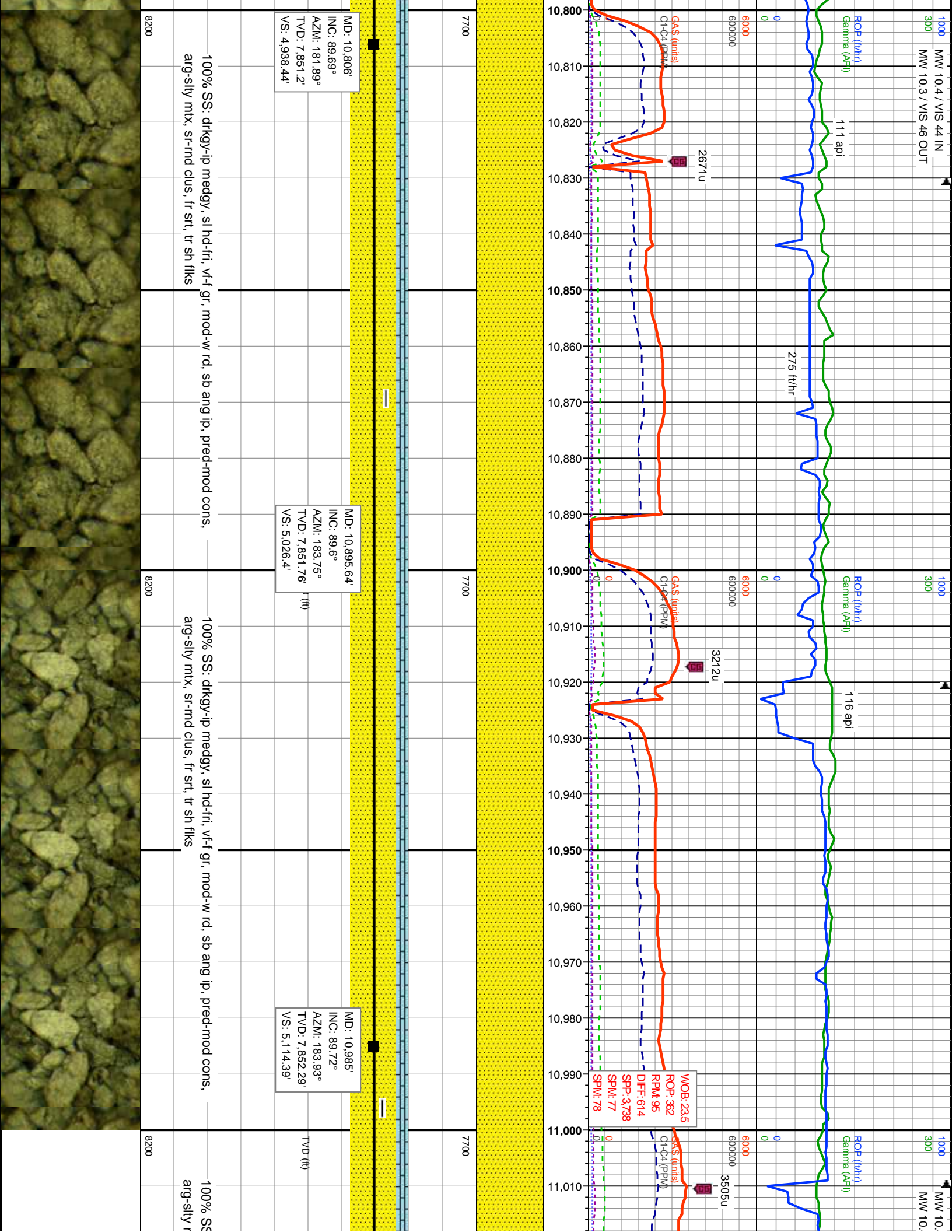


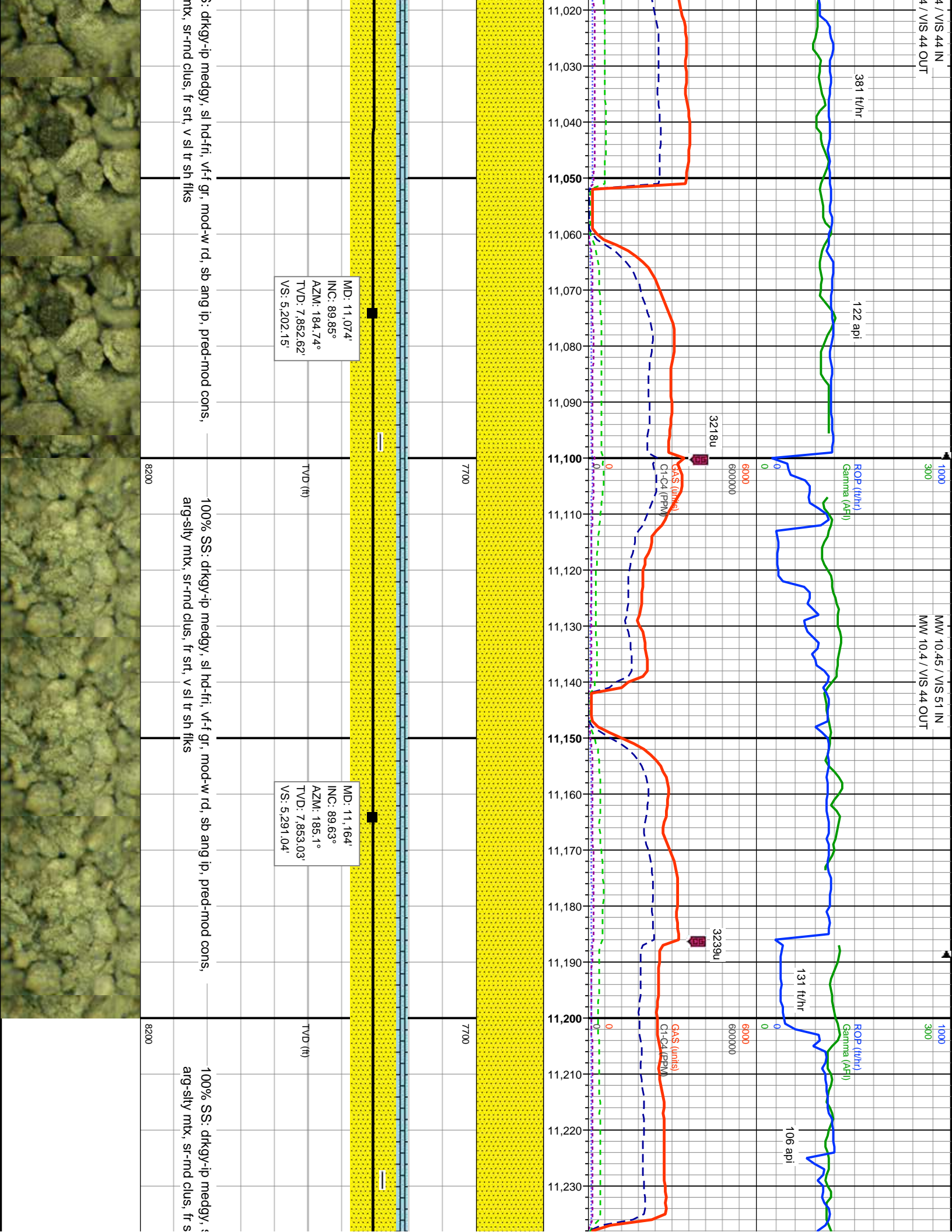




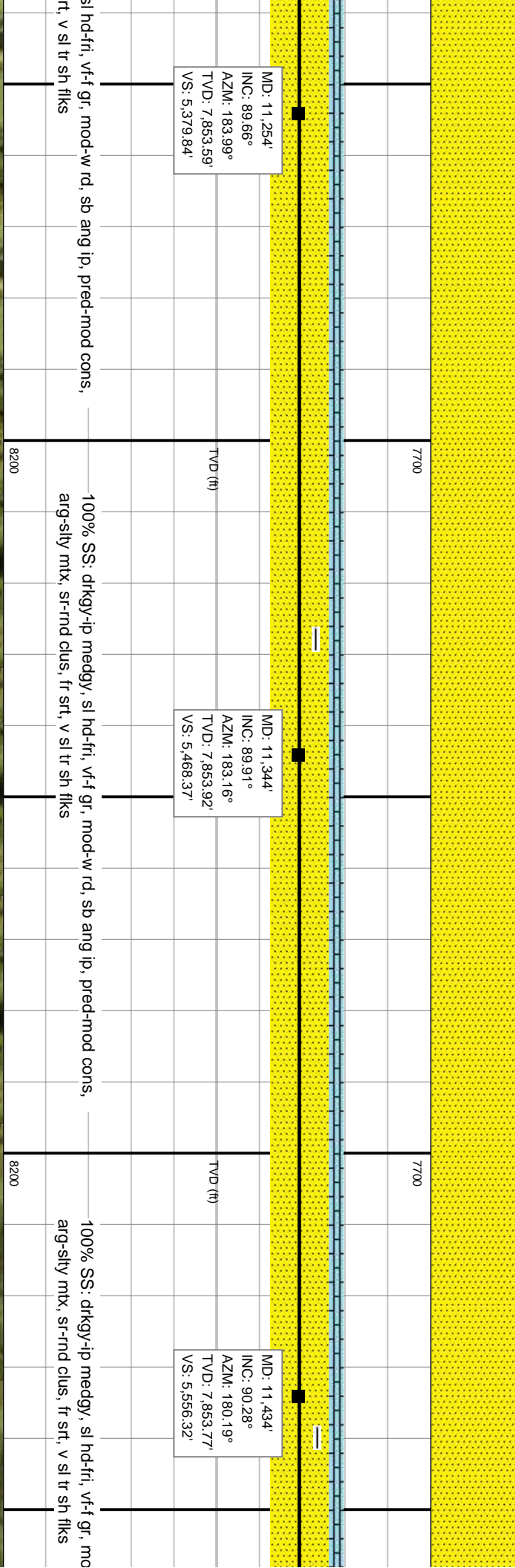
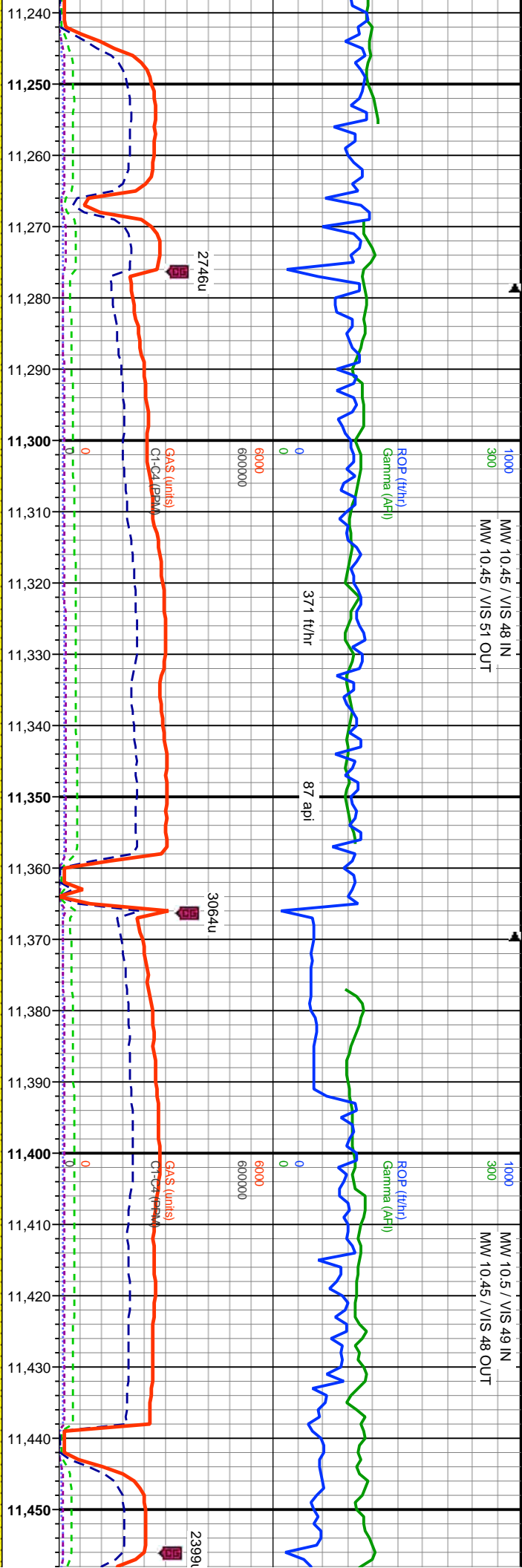






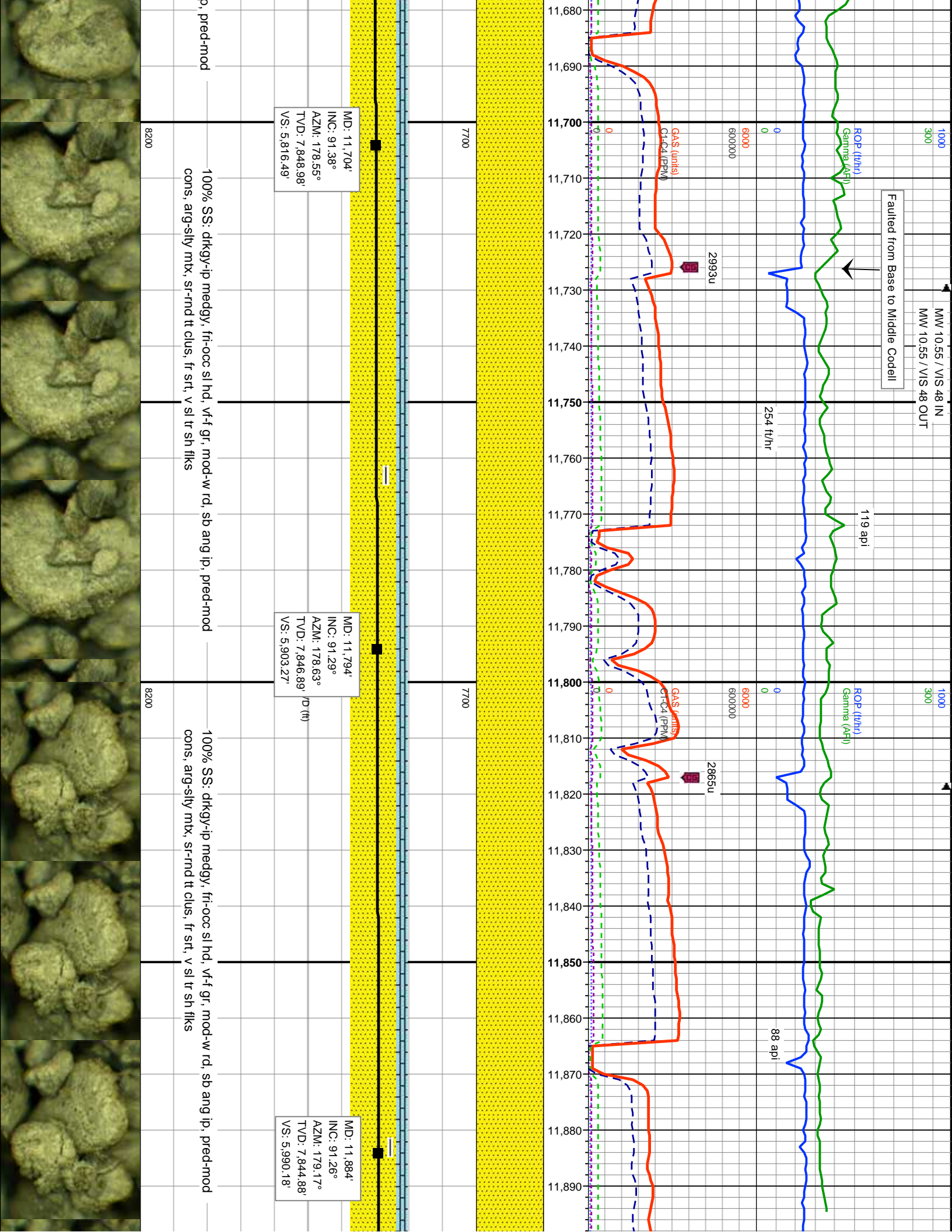




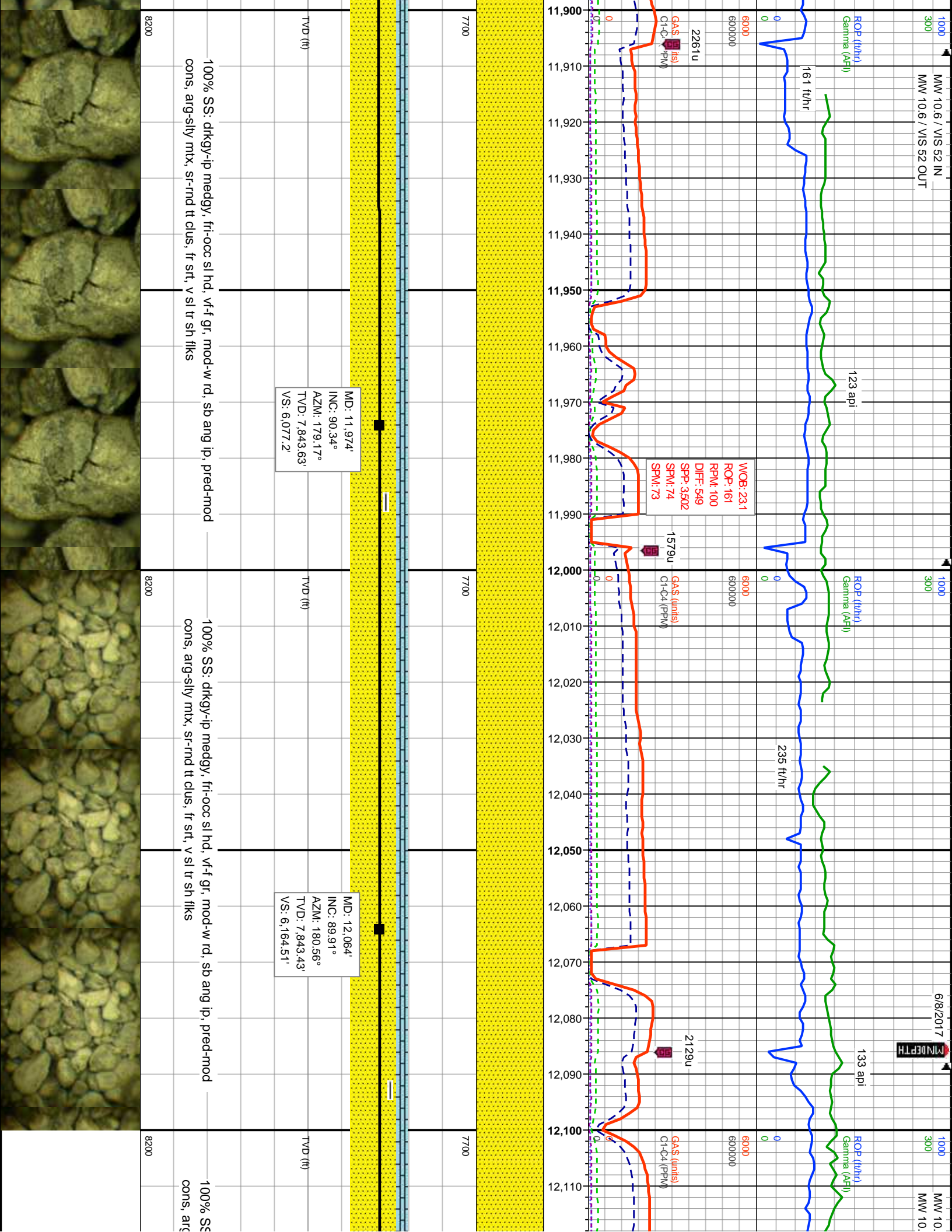


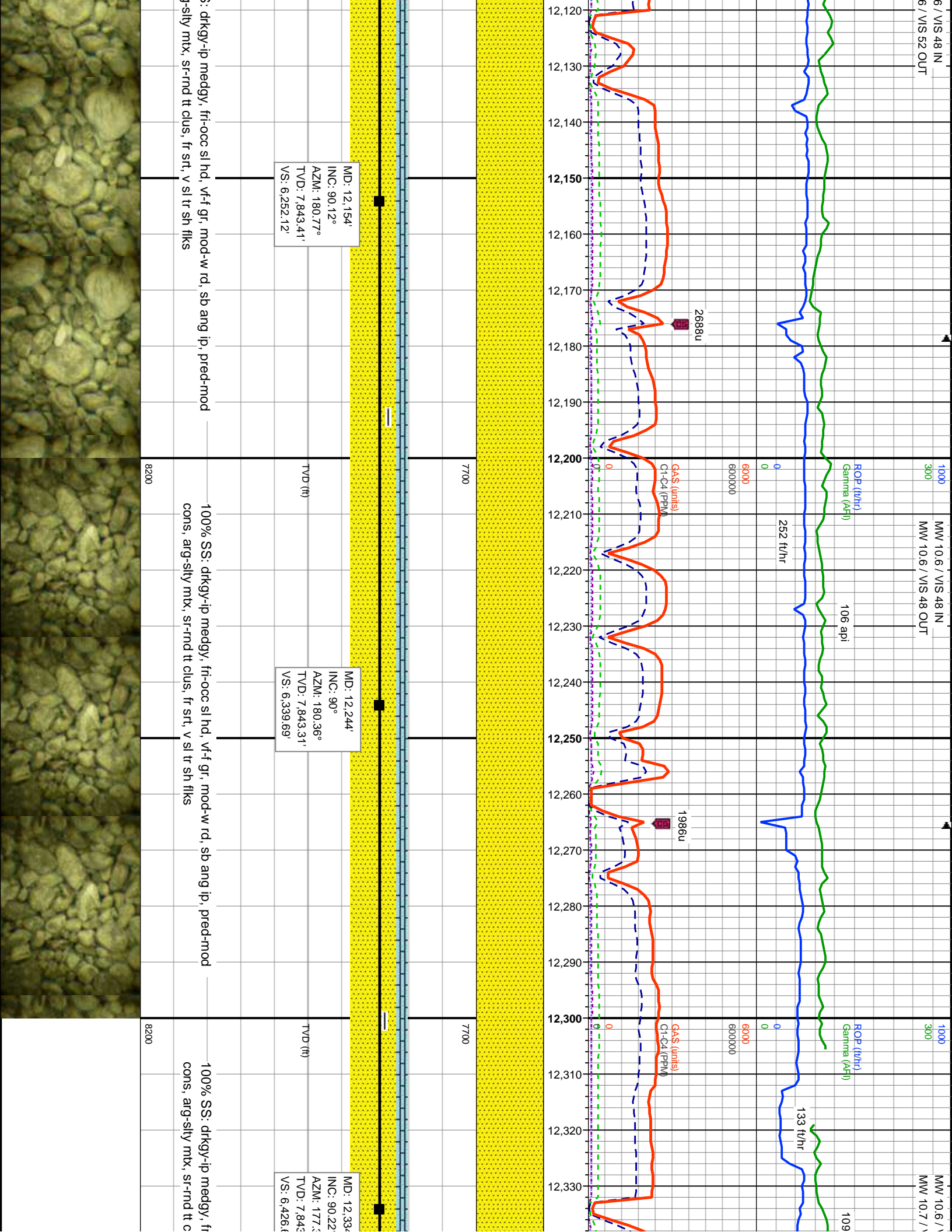




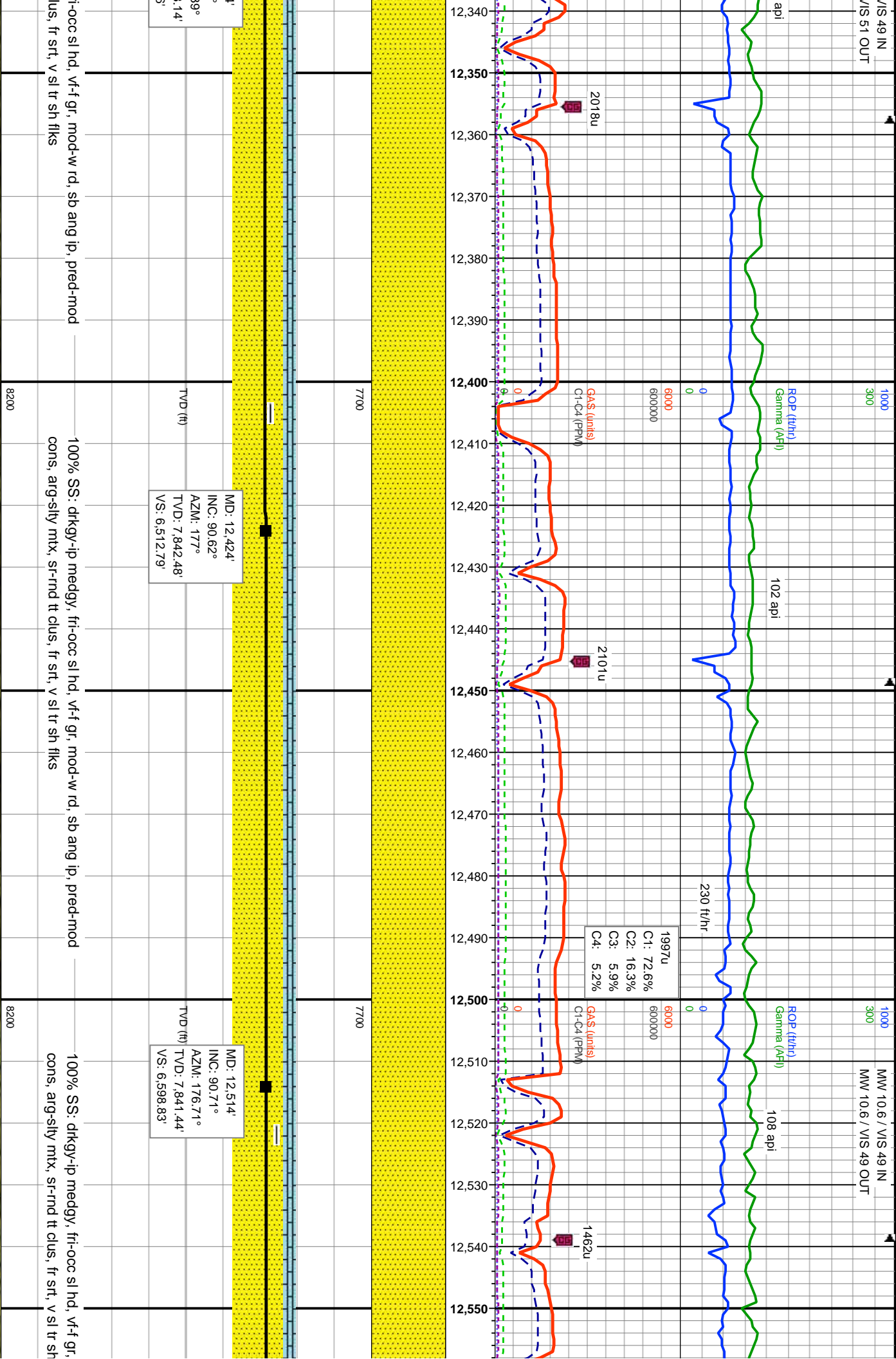




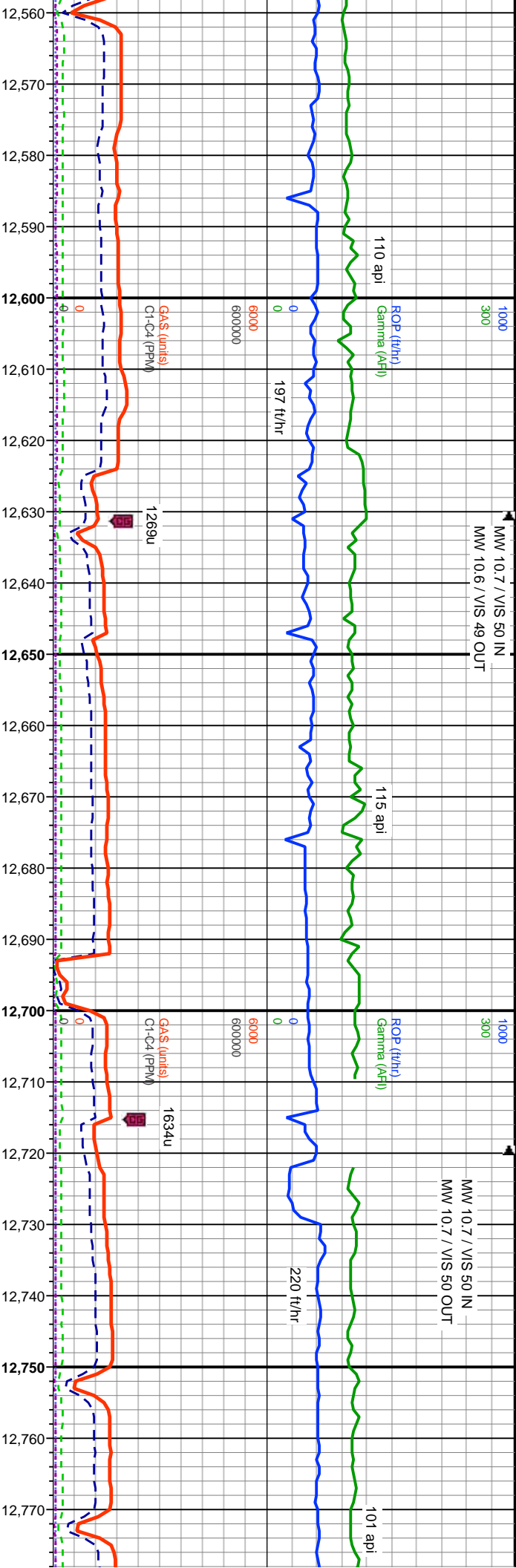












MD: 12,604'  
INC: 90.58°  
AZM: 175.02°  
TVD: 7,840.42'  
VS: 6,684.39'

MD: 12,694'  
INC: 90.15°  
AZM: 172.5°  
TVD: 7,839.85'  
VS: 6,768.87'

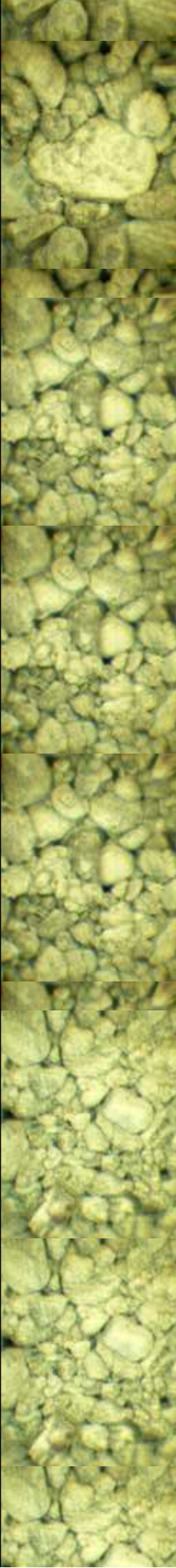
mod-w rd, sb ang ip, pred-mod  
fllks

100% SS: drky-ip medgy, fri-occ sl hd, vf-f gr, mod-w rd, sb ang ip, pred-mod  
cons, arg-sily mtz, sr-rnd tt clus, fr srt, v sl tr sh fllks

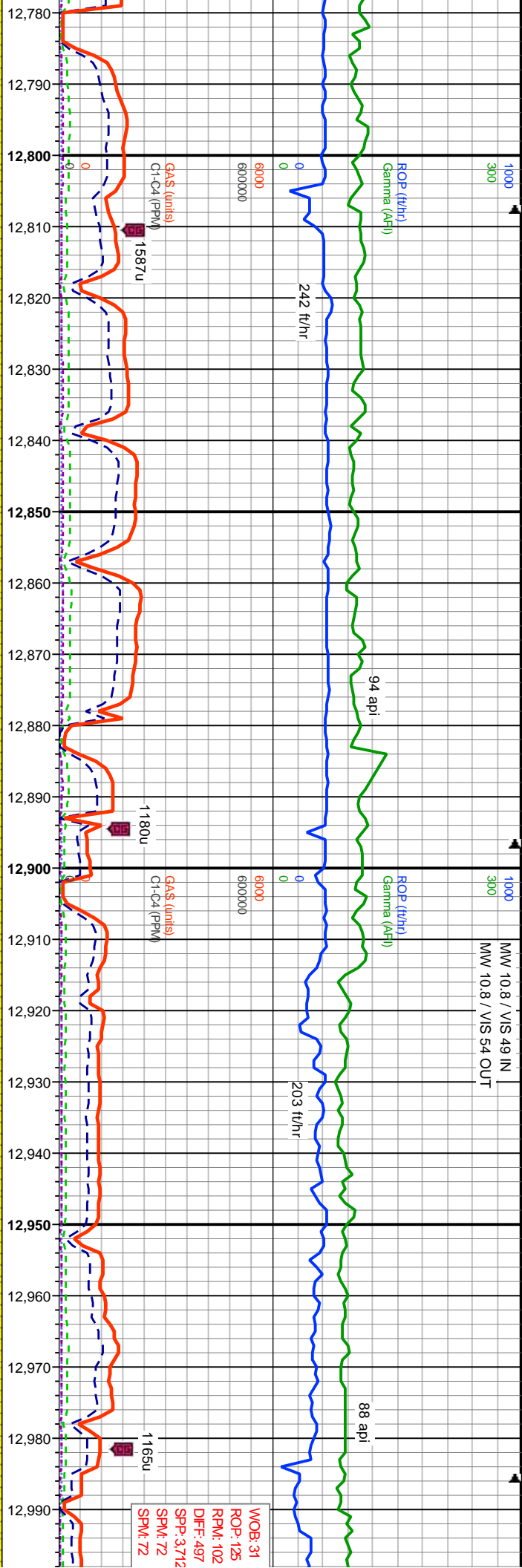
8200

100% SS: med gy-dk gy, frm-fri, occ mod cons-uncons, vf-f gr, mc  
arg-sily mtz, com rnd tt clus, fr srt, calc cmt, tr sh fllks, tr inoc frags

8200







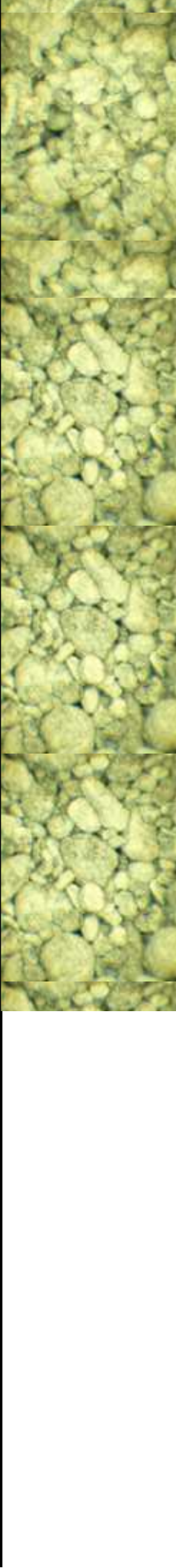
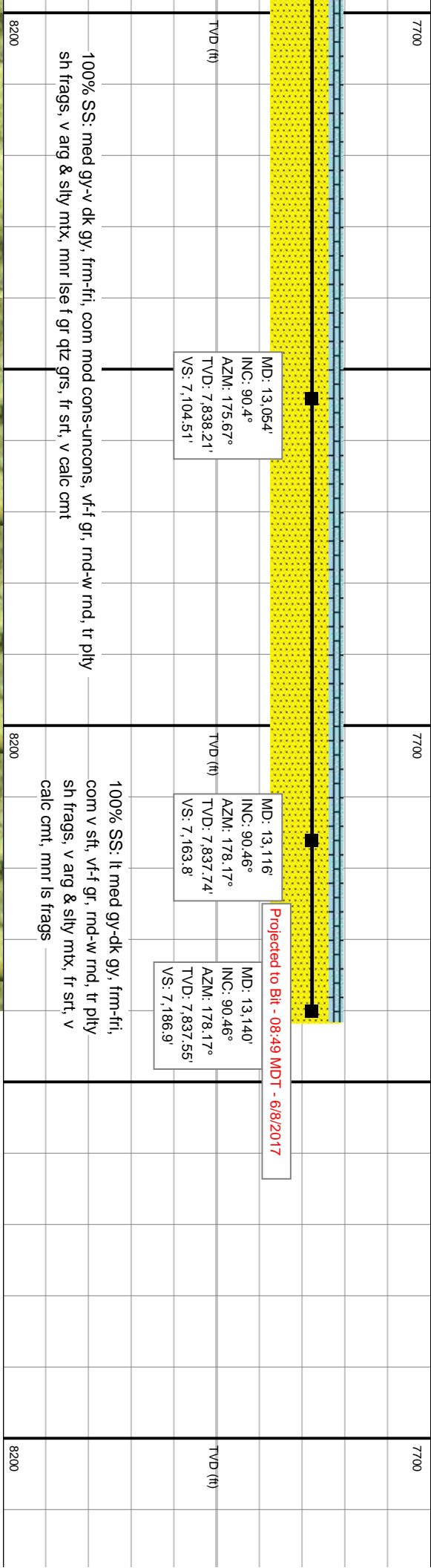
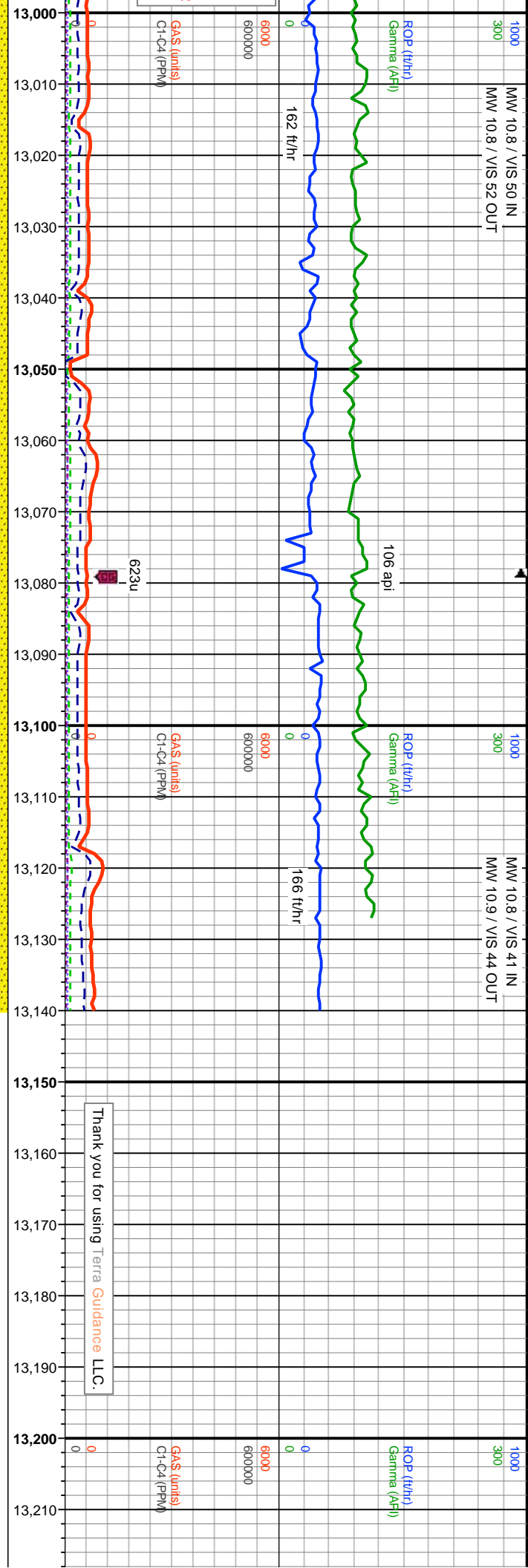
MD: 12,784'  
INC: 90.03°  
AZM: 170.99°  
TVD: 7,839.71'  
VS: 6,852.22'

MD: 12,874'  
INC: 90.34°  
AZM: 172.47°  
TVD: 7,839.42'  
VS: 6,935.56'

MD: 12,964'  
INC: 90.4°  
AZM: 173.45°  
TVD: 7,838.84'  
VS: 7,019.61'

100% SS: med gy-dk gy, frm-fri, com mod cons-uncons, vf-f gr, rnd-w rnd, tr pily, v  
arg-sily mtz, mod com rnd tt clus, fr srt, v calc cmt, tr sh flks, tr lse pyr nod

100% SS: med gy-dk gy, frm-fri, com mod cons-uncons, vf-f gr, rnd-w rnd, tr pily  
sh frags, v arg & sily mtz, com lse f gr qtz grs, fr srt, v calc cmt, mnrls frags in f pt  
of spl





|  |  |  |  |  |  |  |  |  |  |
|--|--|--|--|--|--|--|--|--|--|
|  |  |  |  |  |  |  |  |  |  |
|  |  |  |  |  |  |  |  |  |  |
|  |  |  |  |  |  |  |  |  |  |
|  |  |  |  |  |  |  |  |  |  |

