



Scale: 5" / 100'
Measured Depth Log

Well Name SHOOK 3-10-1NAH_LATERAL

Location NWSE SECTION 3 T1S R67W

State COLORADO

County ADAMS

Country USA

Rig Number ENSIGN 145

API Number 05-001-09978

AFE # 1700007

Geographic Region DJ BASIN

Field WATTENBERG

Spud Date 4/12/2017

Drilling Completed 5/28/2017

Surface Coordinates NWSE SECTION 3, T1S, R67W
2058' FSL x 2274' FEL

Lat/Long: 39.9921541, -104.8733597

Bottom Hole Coordinates SWSW SECTION 10, T1S, R67W
394' FSL x 769' FWL

Lat/Long: 39.5631200, -104.0104001

Ground Elevation 5098'

K.B. Elevation 5111'

Logged Interval 8487' To 12820'

Total Depth 4333'

Formation NIOBRARA A CHALK

Type of Drilling Fluid OIL BASED MUD

Operator

Company PetroShare Corporation

Address 7200 S Alton Way
Englewood, CO 80112



Geologist

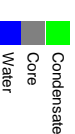
Name WEDGE HOWLAND, JOEY LUCE

Company Terra Guidance

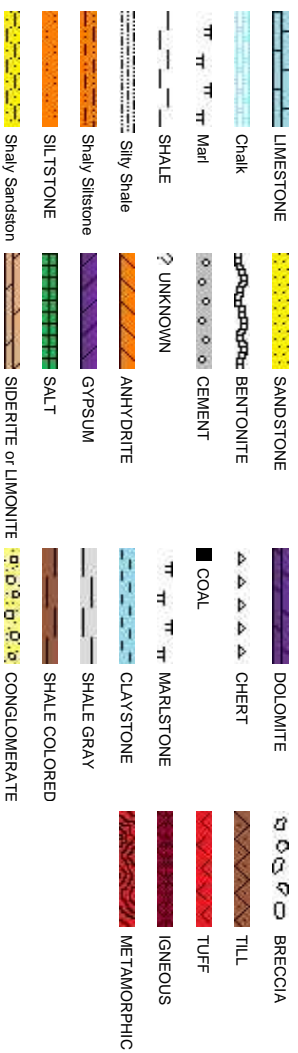
Address 1298 O Road
Loma CO 81524
(970) 260-5408



Zone Color Coding

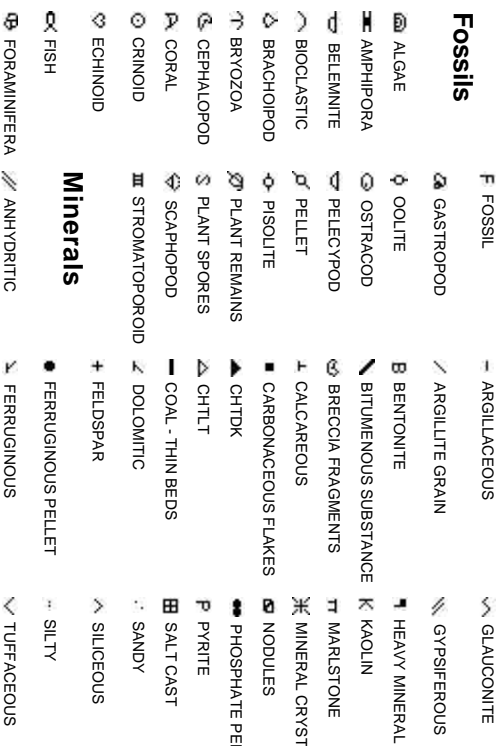


Rock Types

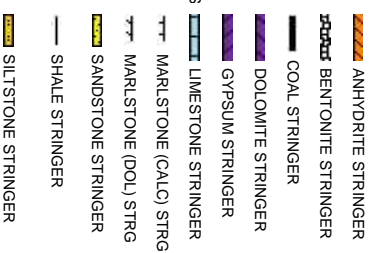


Accessories

Fossils



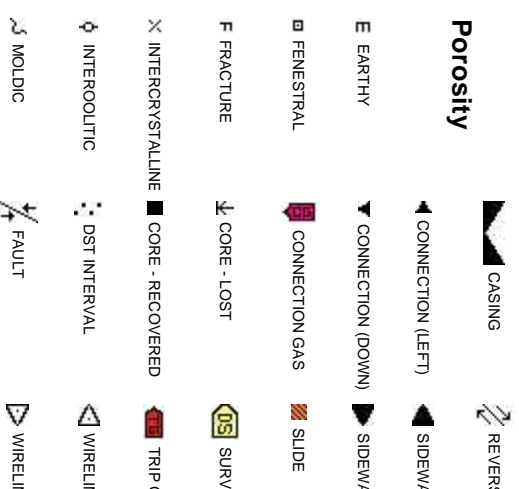
Stringer



Other



Engineering



Porosity



er Symbols

FORMATION TOP L LITHOGRAPHIC

Rounding

HOW MX MICROXLN

PTH A ANGULAR MS MUDSTONE

L FAULT R ROUNDED PS PACKSTONE

LOW B SUBANG WS WACKESTONE

JURNED STRATA T SUBRND

Sorting

SE FAULT

Textures

ALL CORE (LEFT) M MODERATE

ALL CORE (RIGHT) BS BOUNDSTONE P POOR

C CHALKY W WELL

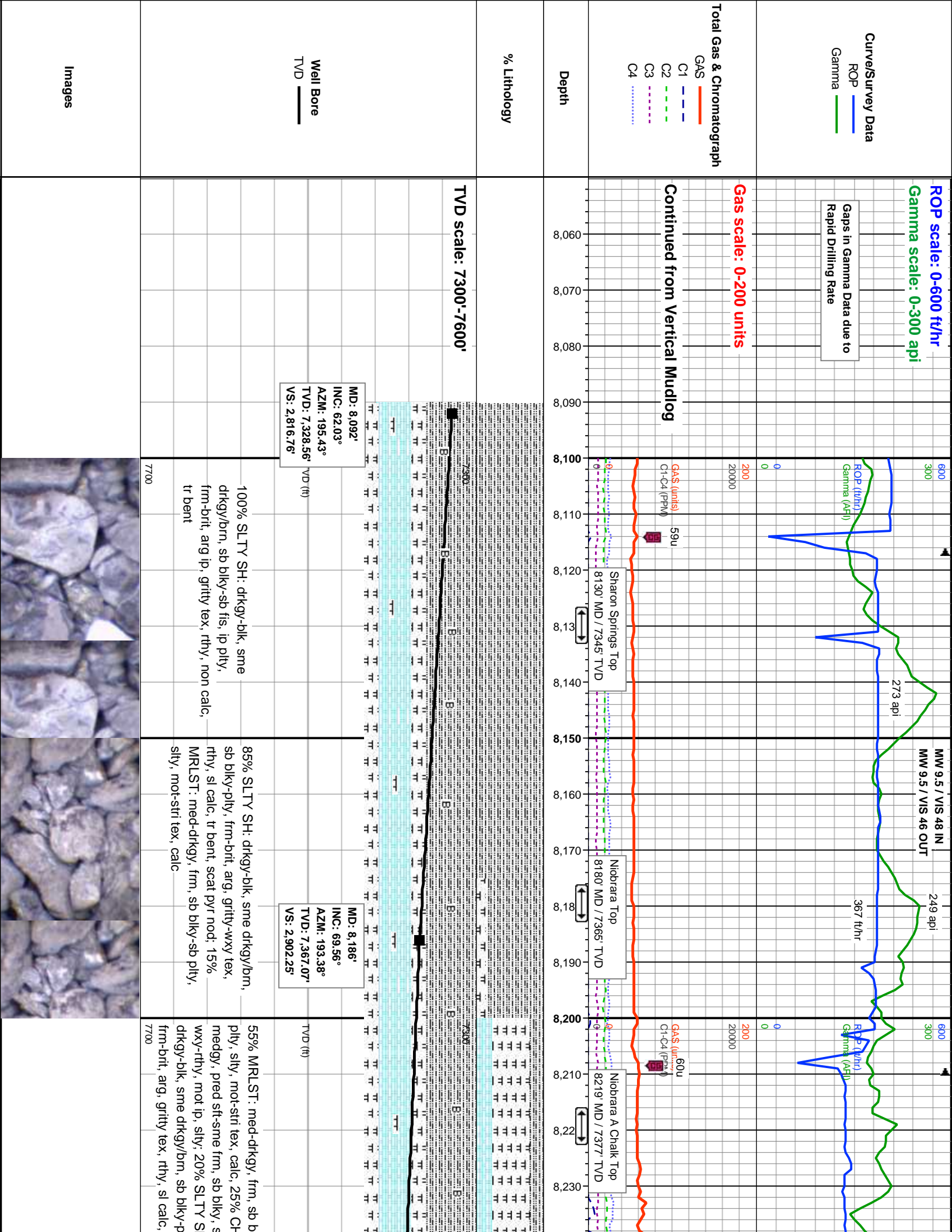
EY CX CRYPTOXLN

EGAS E EARTHY

NE TESTED - LEFT FX FINELYXLN

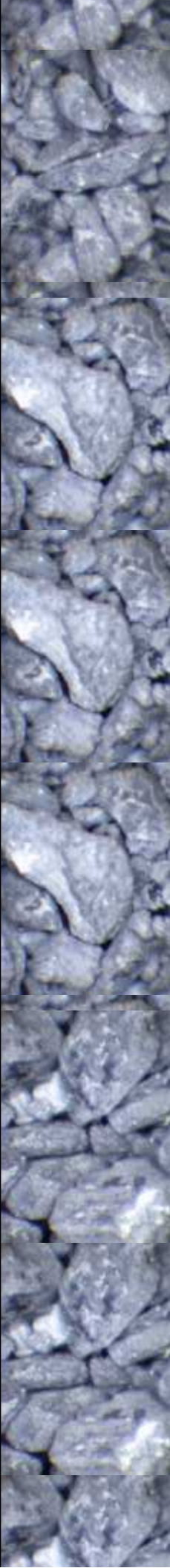
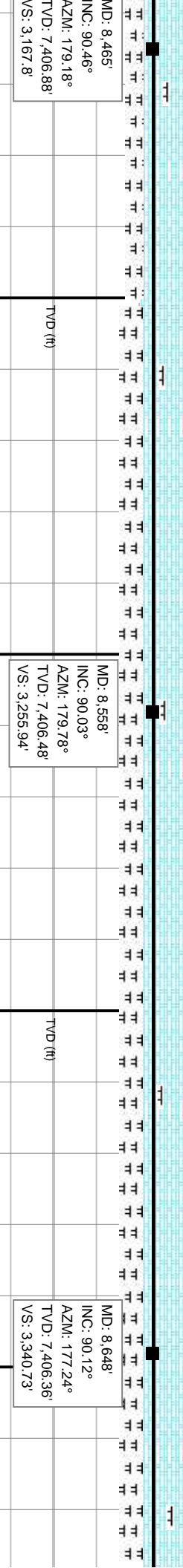
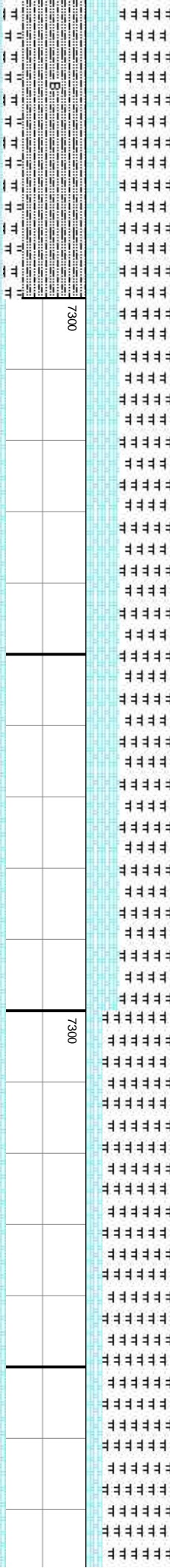
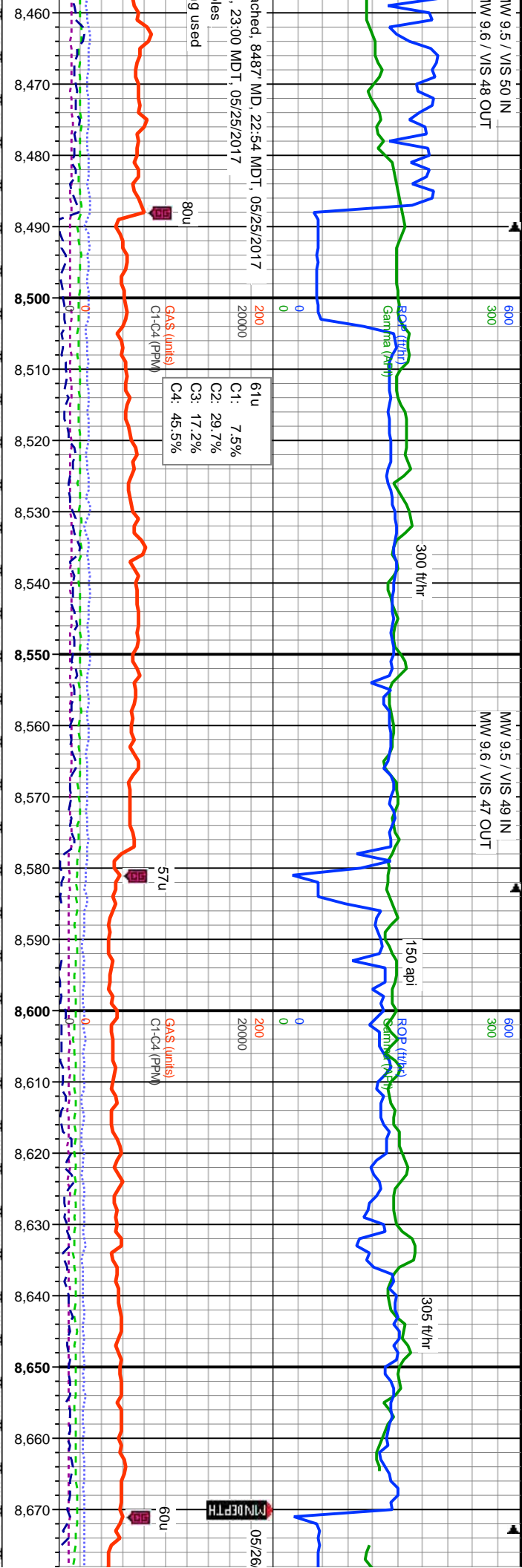
NE TESTED - RT BS GRAINSTONE

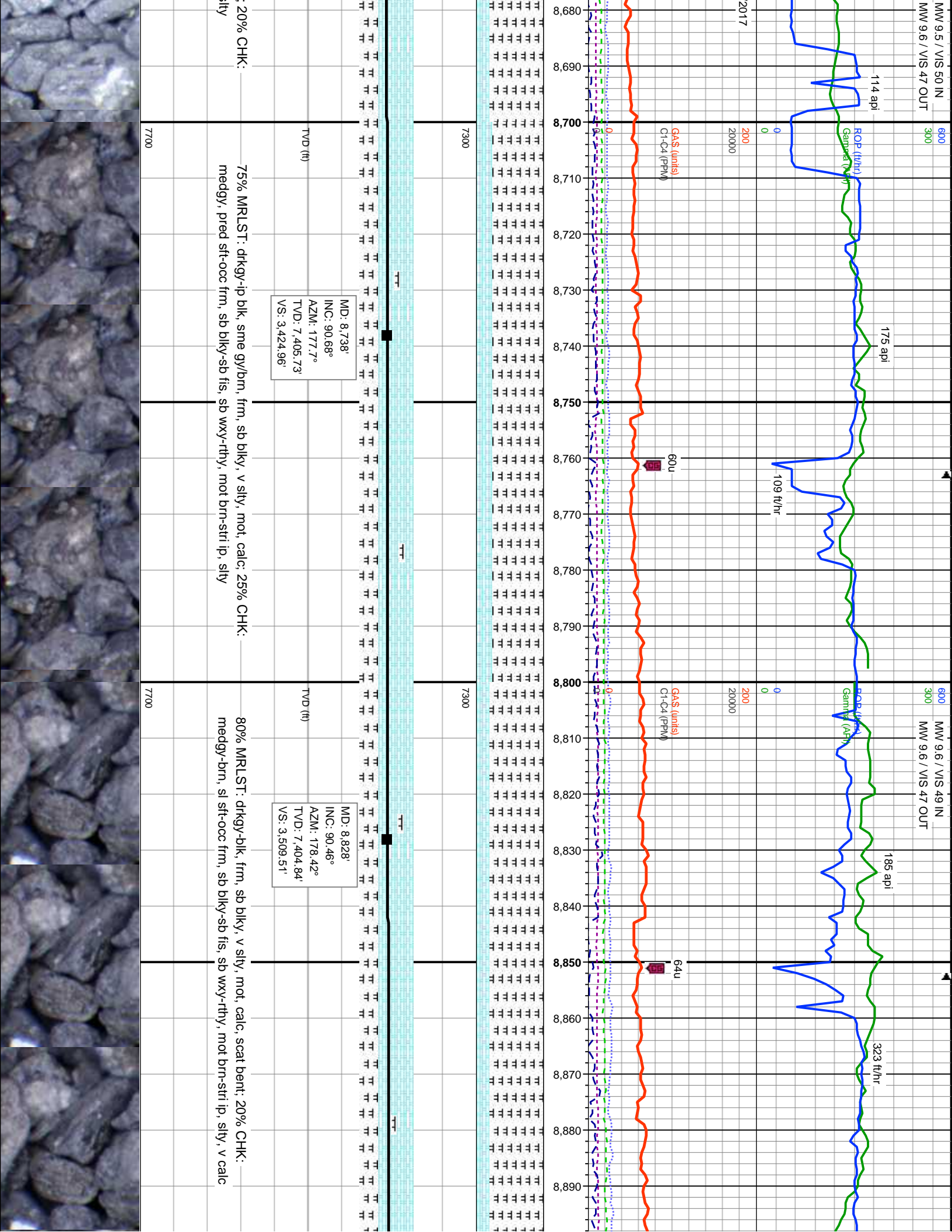
ConnectionGas(Vert)

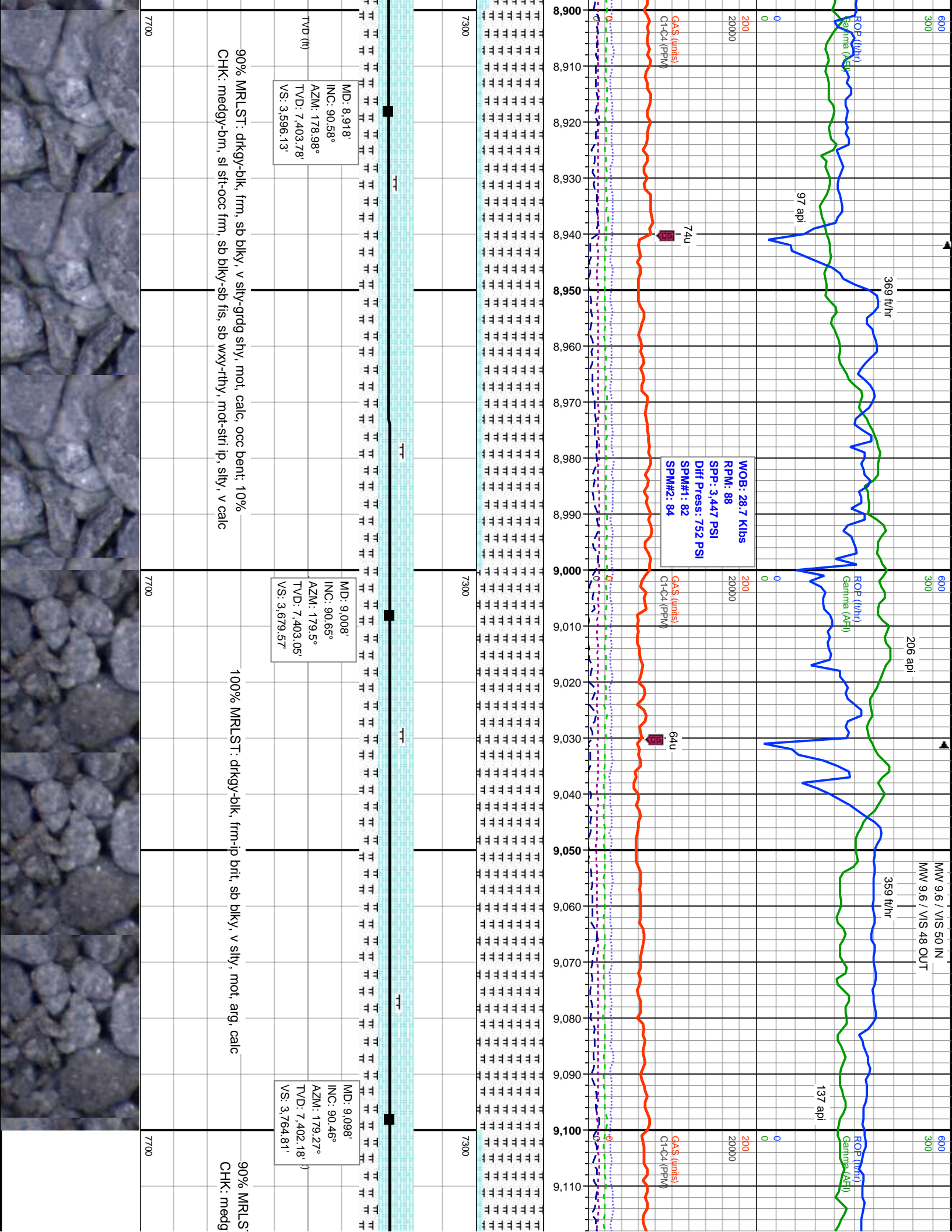


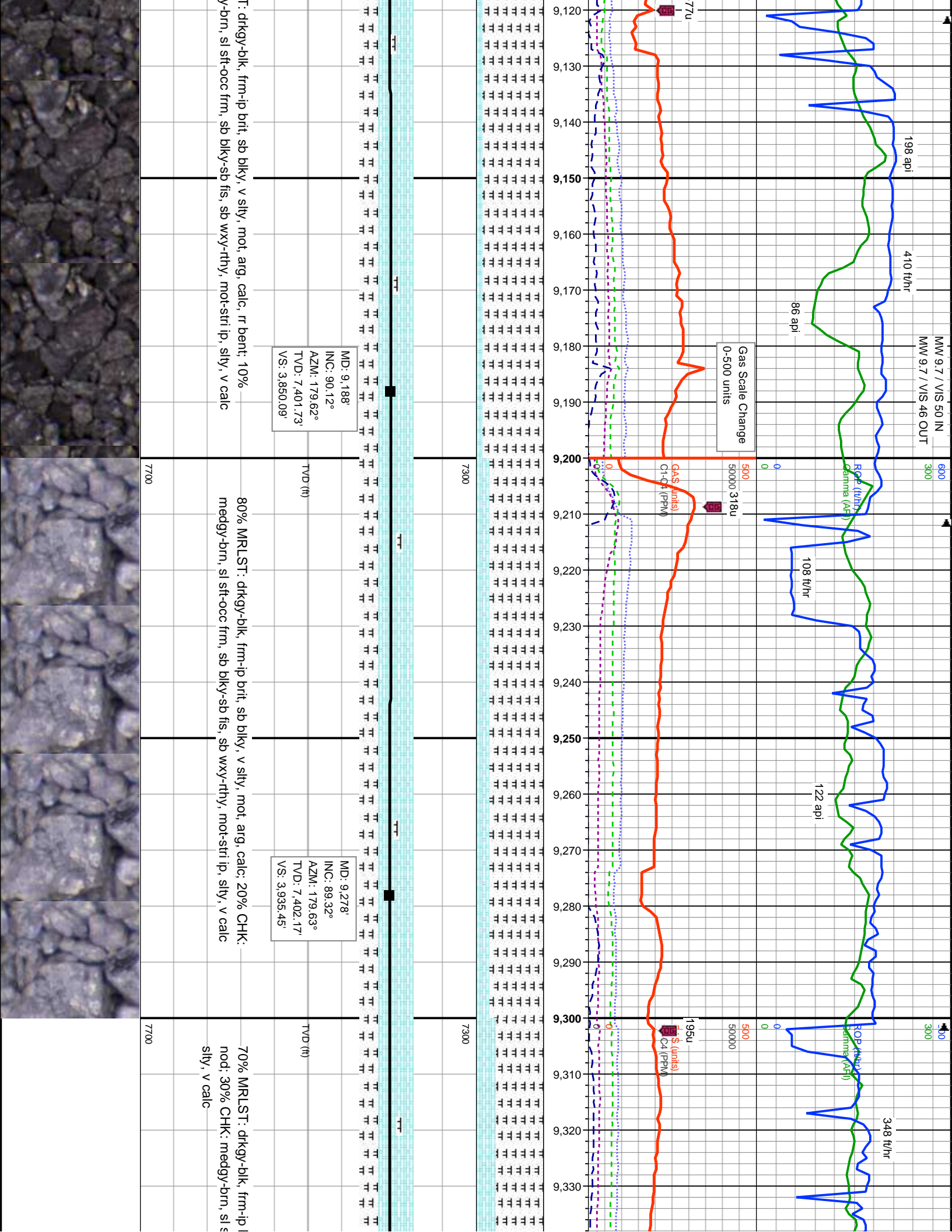
MW 9.5 / VIS 50 IN
MW 9.6 / VIS 48 OUT

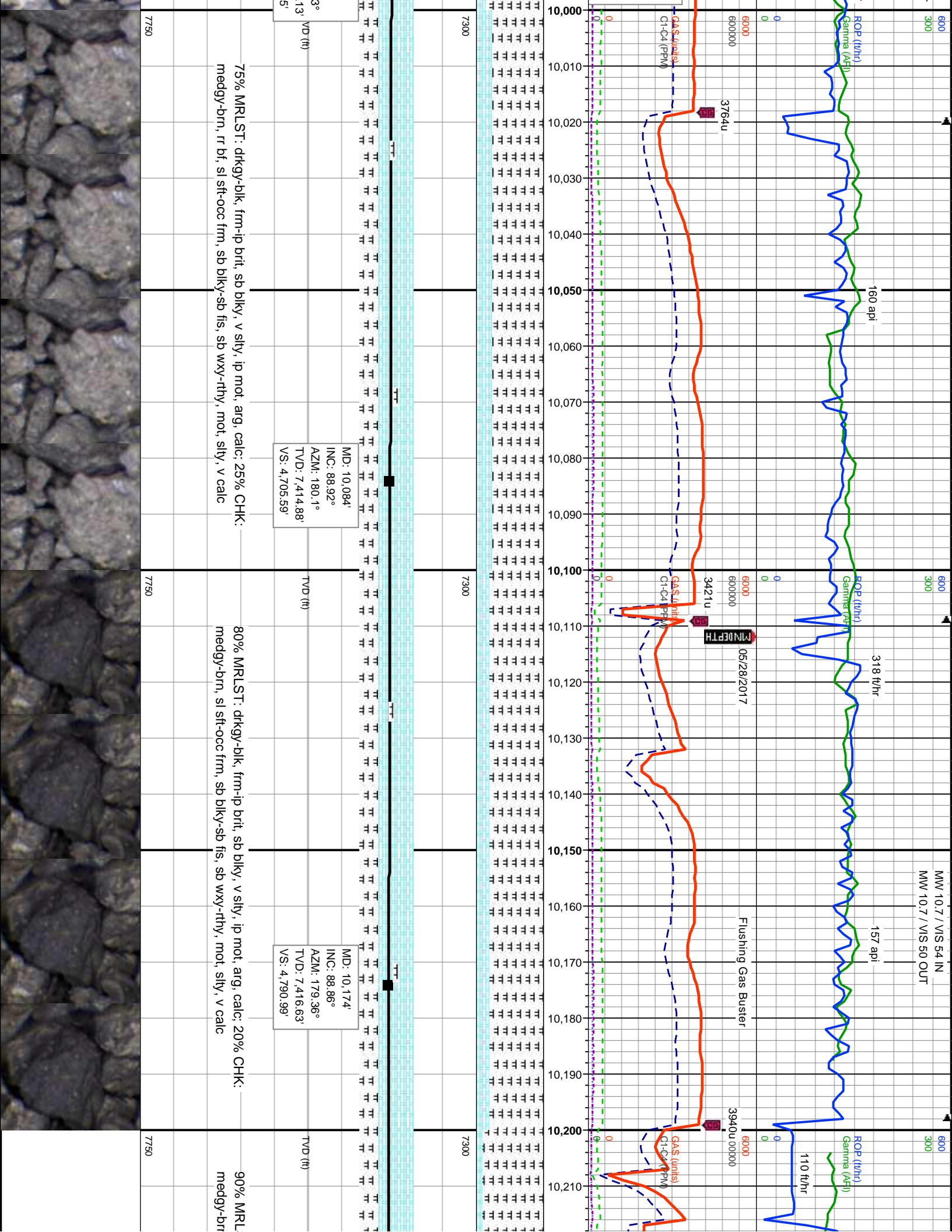
MW 9.5 / VIS 49 IN
MW 9.6 / VIS 47 OUT

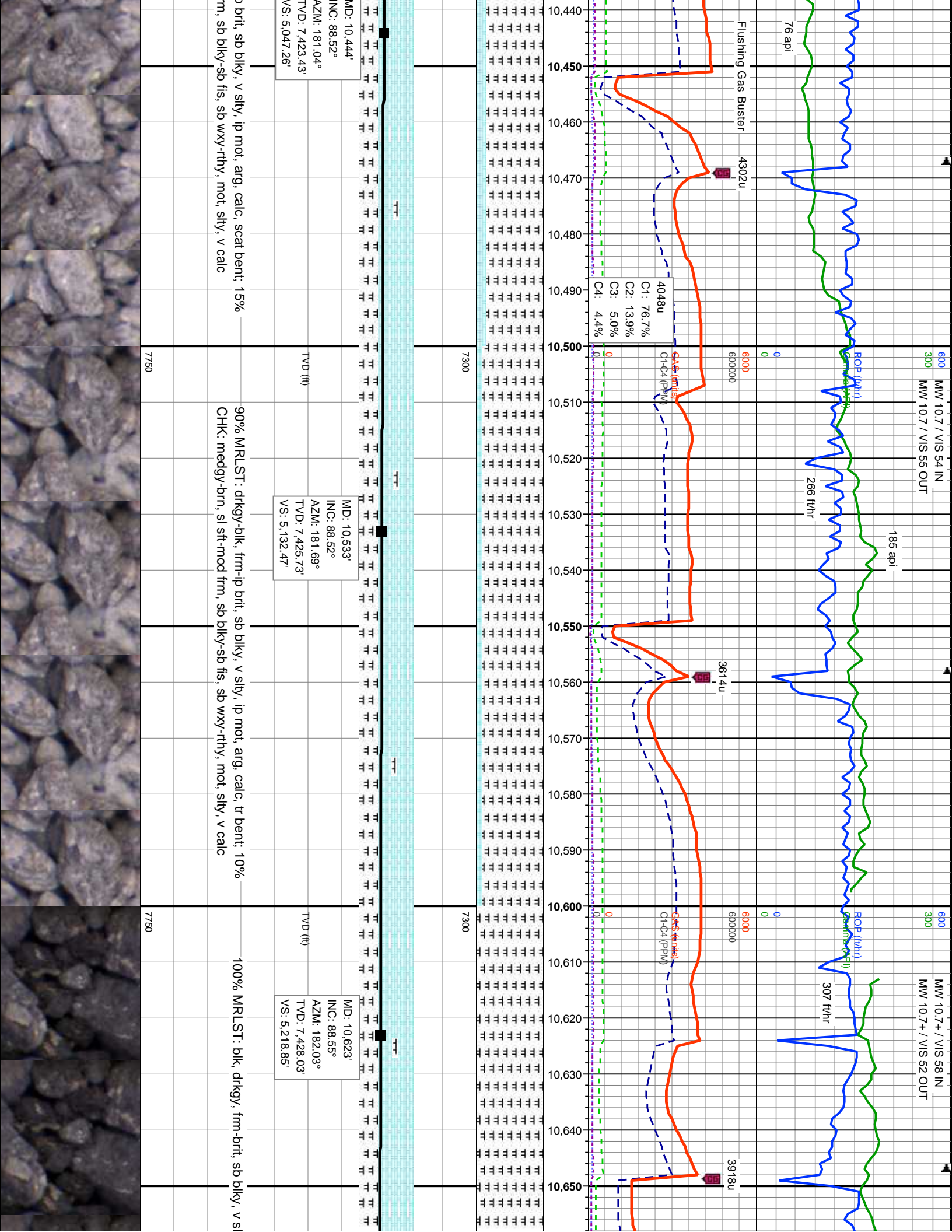


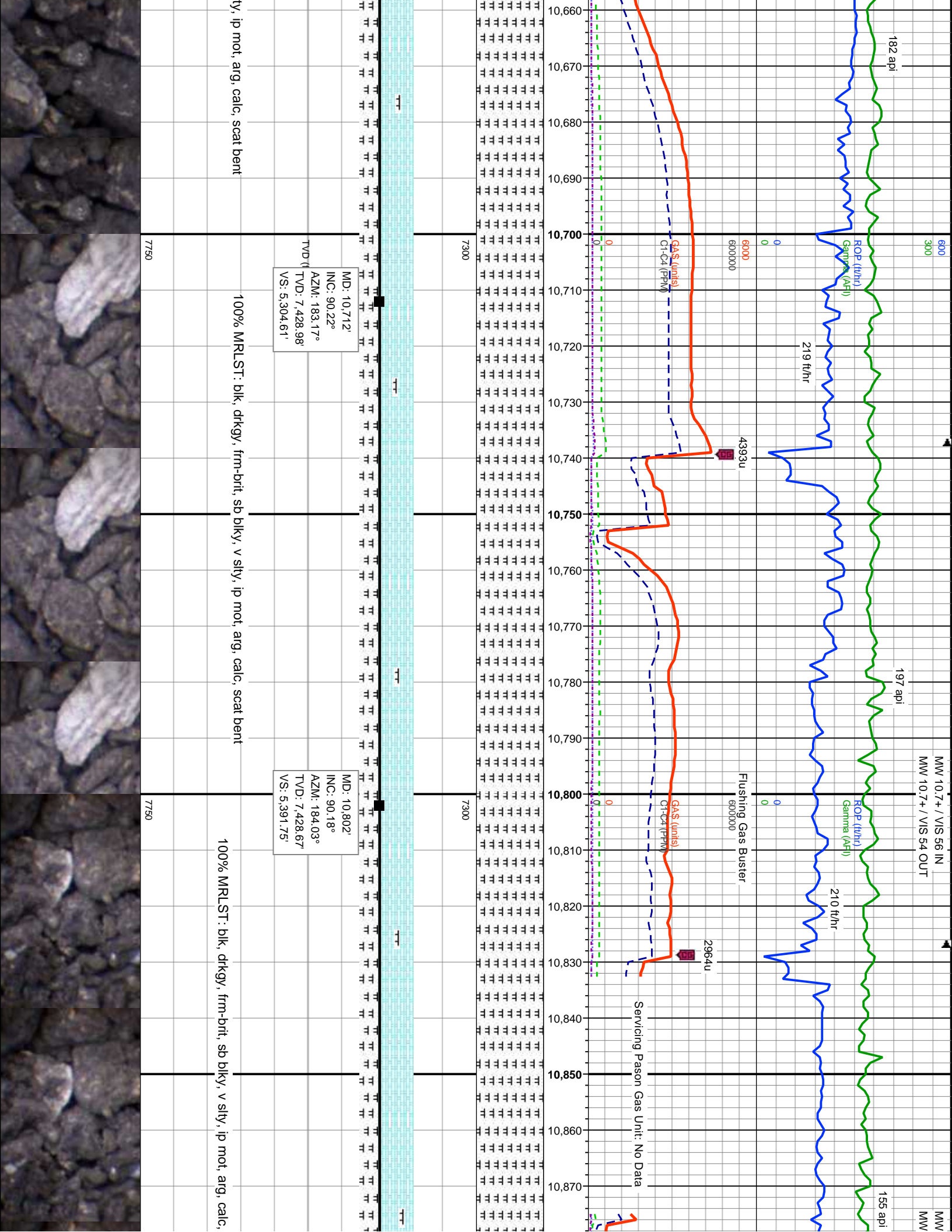


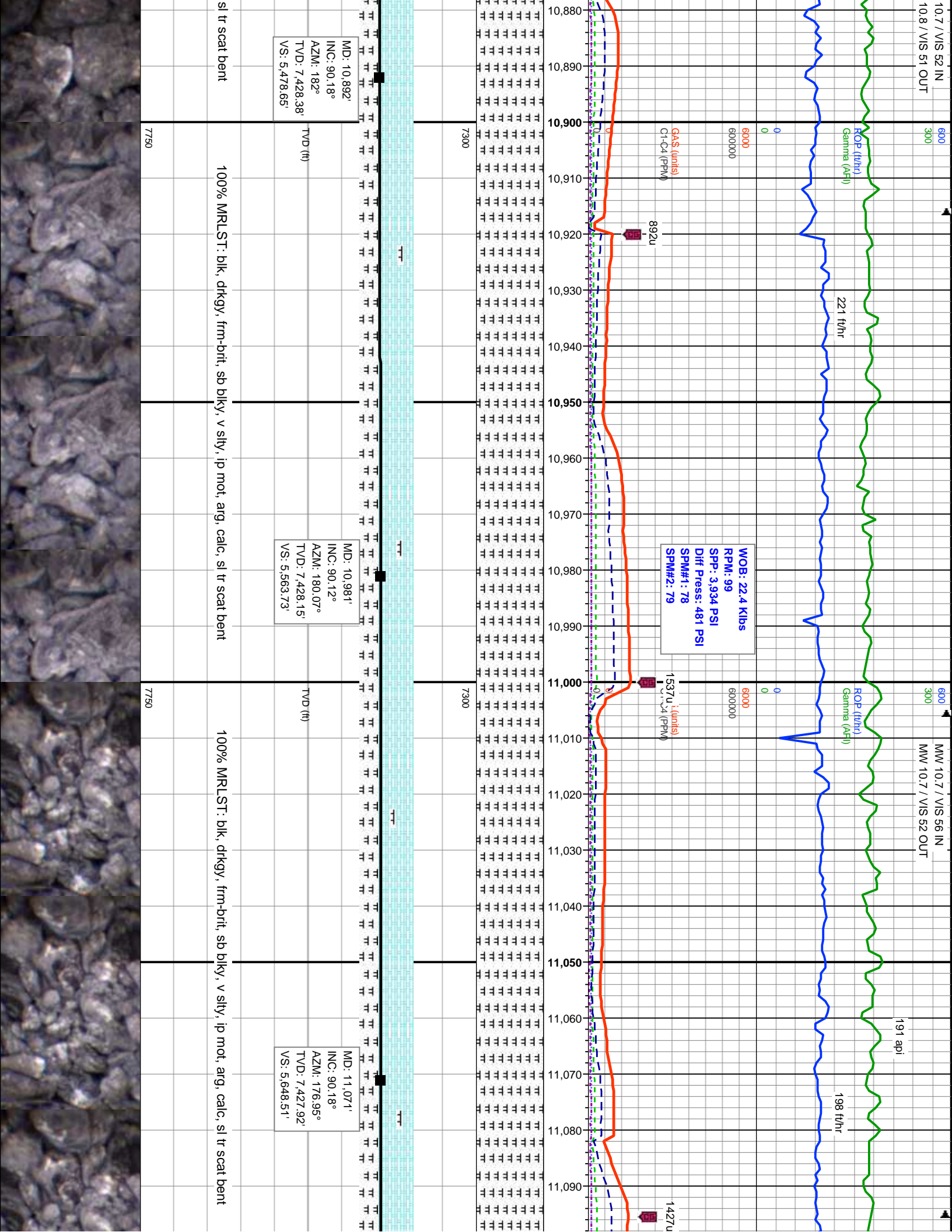


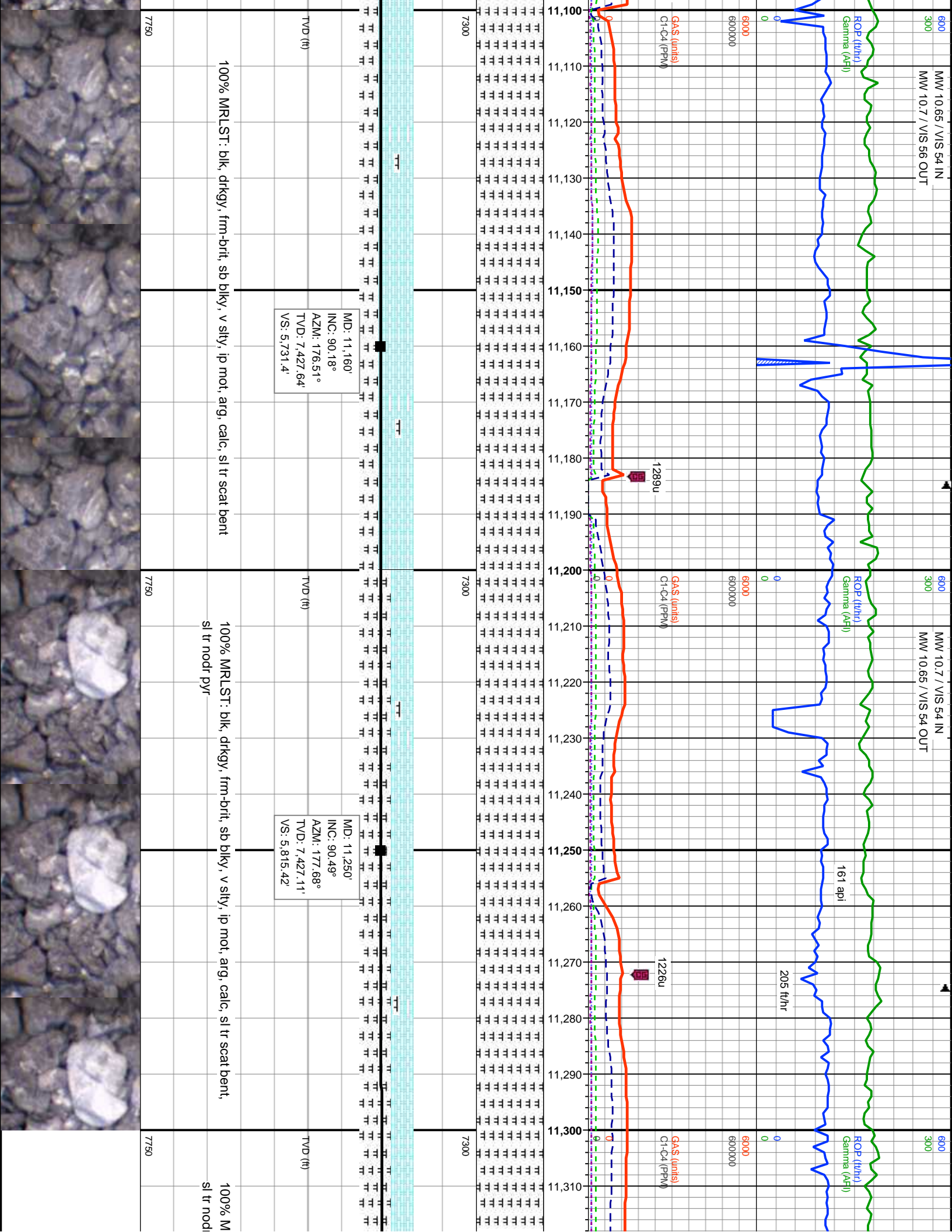


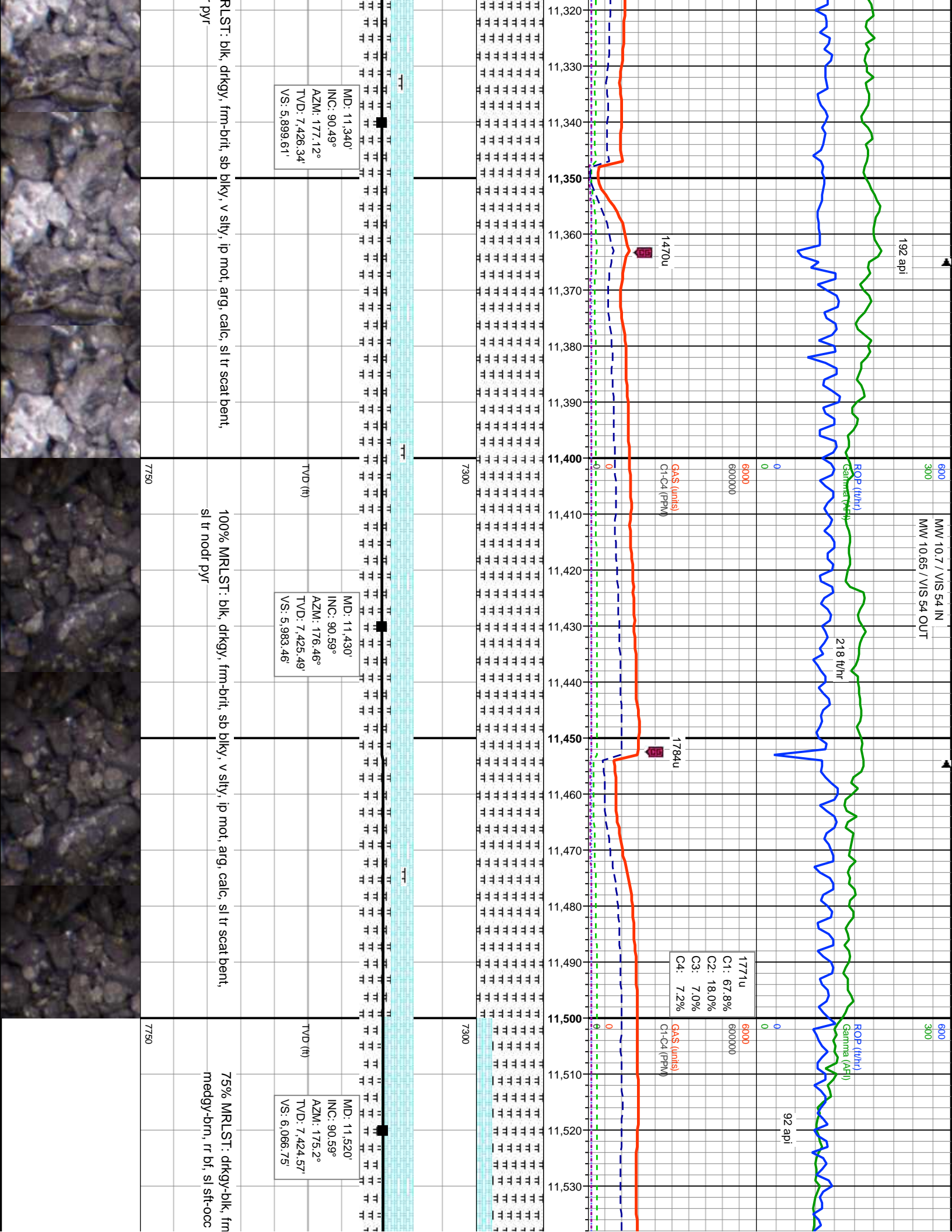


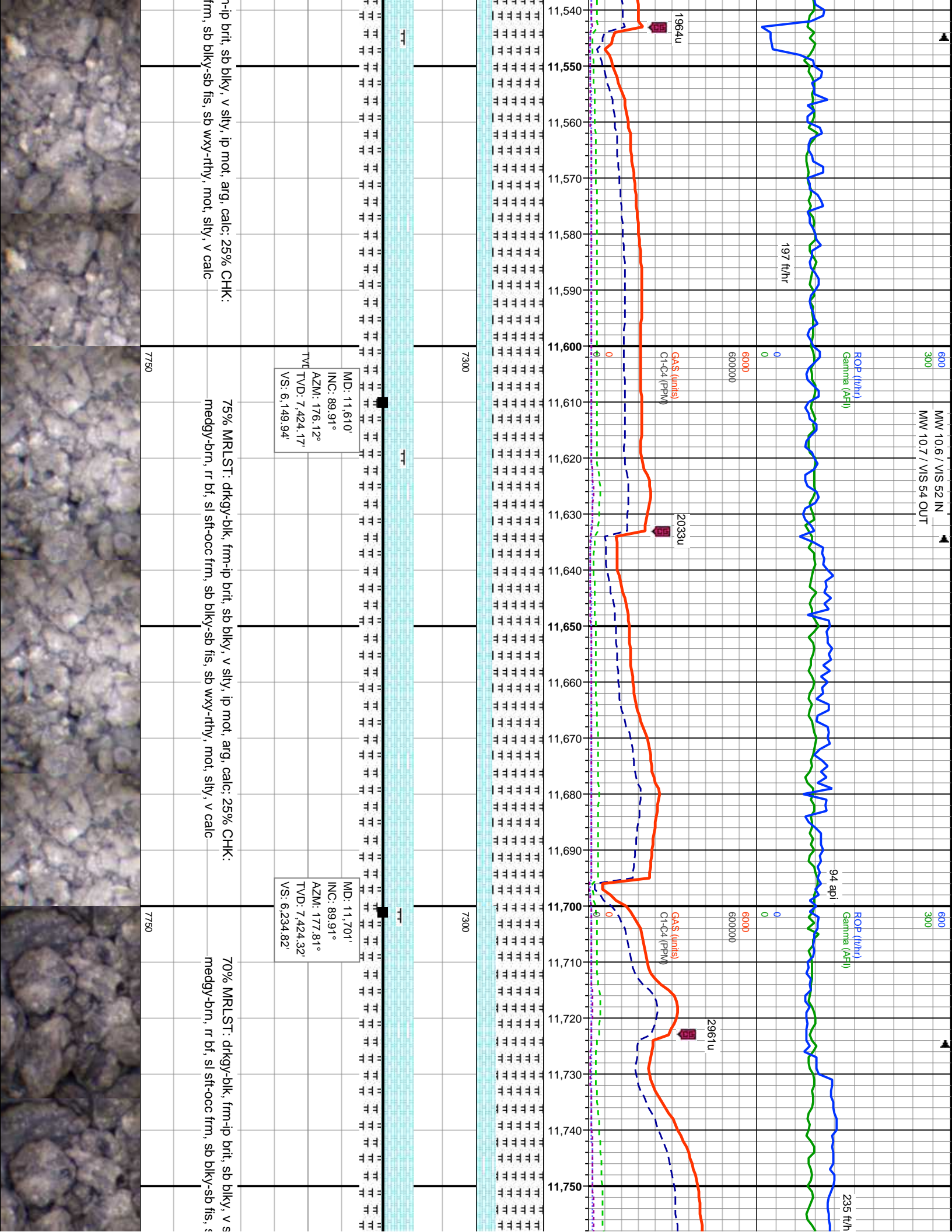


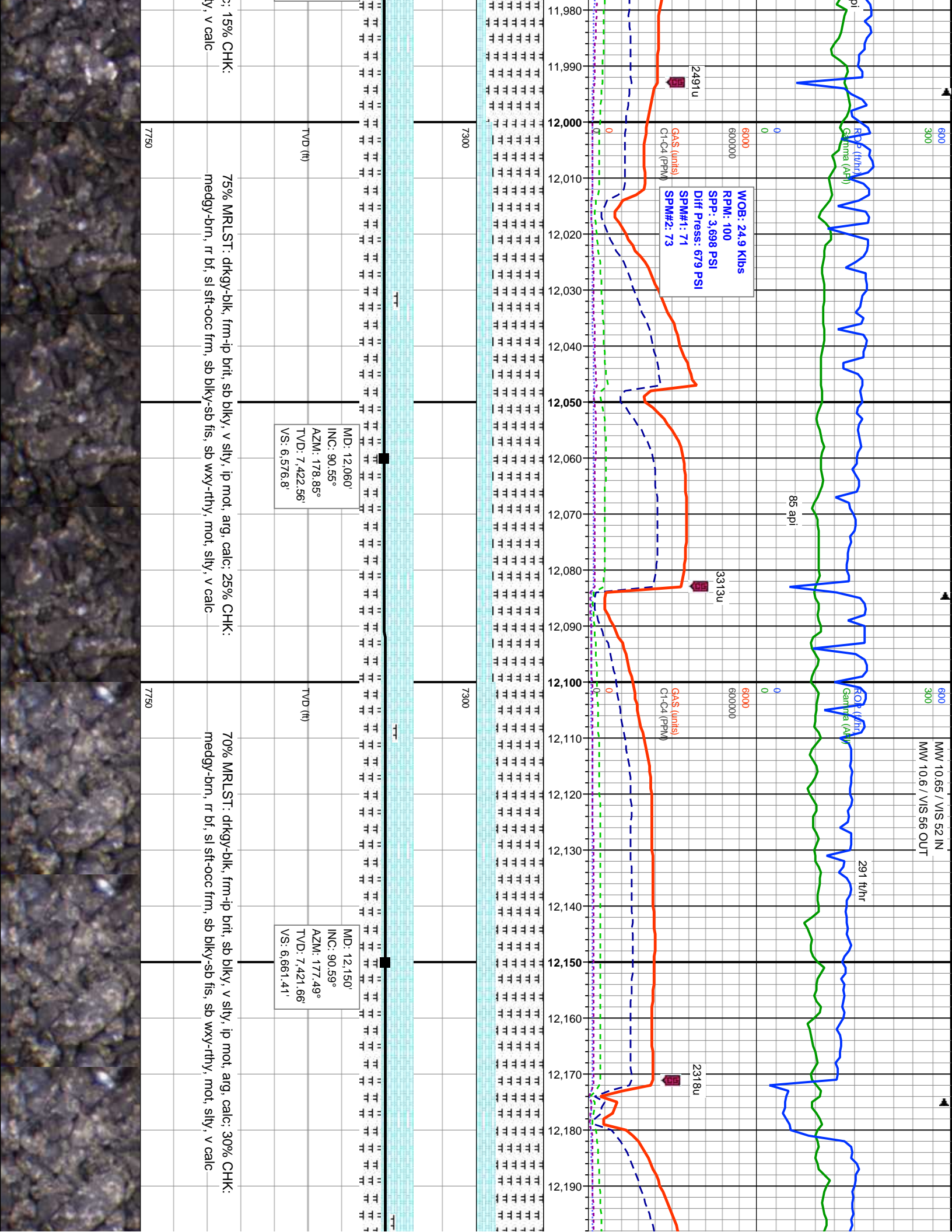




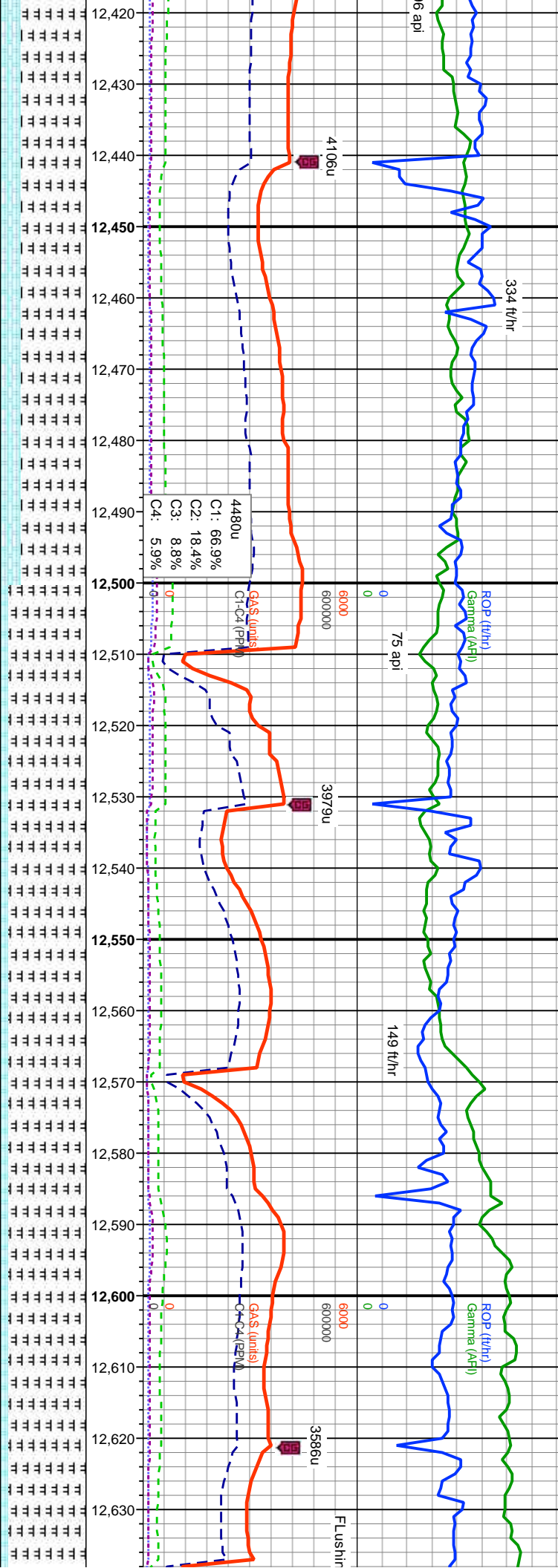








10.6 / VIS 52 IN
10.6 / VIS 57 OUT
600 MW 10.6 / VIS 58 IN
300 MW 10.6 / VIS 54 OUT

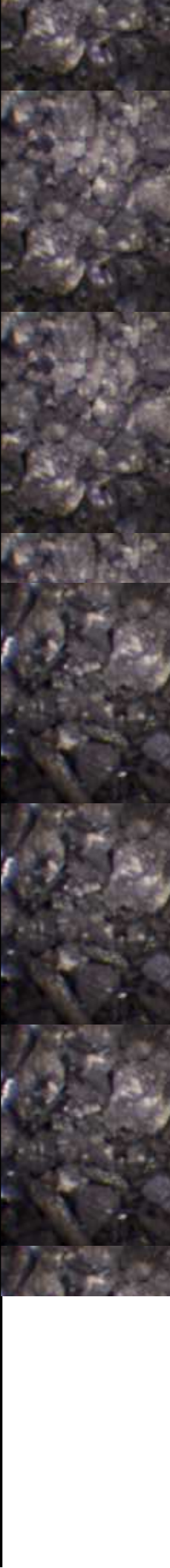


12,421' MD: 12,510' INC: 90.52° AZM: 179.38° TVD: 7,418.23' VS: 7,000.84'

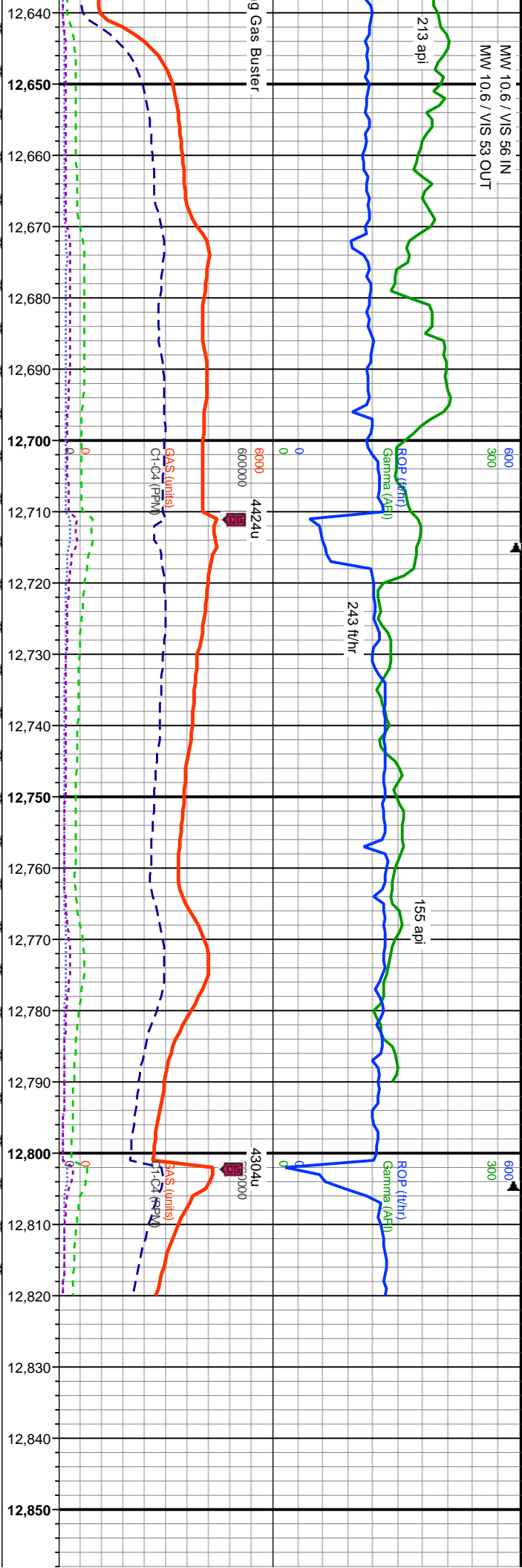
12,421' MD: 12,600' INC: 90.52° AZM: 179.82° TVD: 7,417.41' VS: 7,086.19'

RLST: drkgv-blk, frm-ip brt, sb blk, v slty, ip mot, arg, calc: 25% CHK: brn, ltr gy, sl sft-occ frm, sb blk-sb fis, sb wxy-rthy, mot, slty, v calc

90% MRLST: drkgv-blk, frm-ip brt, sb blk, v slty, ip mot, arg, calc: 10% CHK: medgy-brn, sl sft-occ frm, sb blk-sb fis, sb wxy-rthy, mot, slty, v calc



MW 10.6 / VIS 56 IN
MW 10.6 / VIS 53 OUT



MD: 12,690'
INC: 90.52°
AZM: 179.72°
TVD: 7,416.59'
VS: 7,171.62'

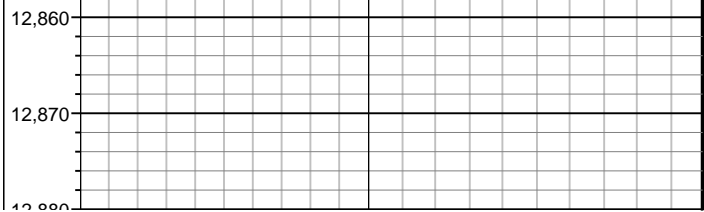
MD: 12,780'
INC: 90.52°
AZM: 180.09°
TVD: 7,415.78'
VS: 7,257.12'

MD: 12,820'
INC: 90.52°
AZM: 180.09°
TVD: 7,415.41'
VS: 7,295.16'

Projection to Bit

-ip brit, sb blk, v silty, ip mot, arg, calc, scat pyr;
-t-occ frm, sb blk-sb fis, sb wxy-rthy, mot, silty, v calc

85% MRLST: drky-blk, frm-ip brit, sb blk, v silty, ip mot, arg, calc, scat pyr;
15% CHK: medgy-brn, sl sft-occ frm, sb blk-sb fis, sb wxy-rthy, mot, silty, v calc



| /2017 ance, LCI | | | | | | | | |
|--------------------|--|--|--|--|--|--|--|--|
| | | | | | | | | |
| | | | | | | | | |