



Petroshare Corporation

SURFACE POST JOB REPORT

Shook 3-10-1NBH 05-001-09970
S:3 T:1S R:67W Adams CO

CallSheet #: 709
Proposal #: 13155



SURFACE Post Job Report

Attention: Mr. Bill Lloyd | (303) 500-1160 | blloyd@petroshare.com
Petroshare Corporation
9635 Maroon Circle, Ste 400 | Englewood, CO 80112

Dear Mr. Lloyd,

Thank you for the opportunity to provide cementing services on this well. BJ Services strives to achieve complete customer satisfaction. If you have any questions regarding the services or data provided, please contact BJ Services at any time.

Sincerely,

Zen Keith

Technical Specialist-II | (307) 757-7178 | Zen.Keith@bjservices.com

Field Office 1716 East Allison Rd., Cheyenne WY, 82007
Phone: (307) 638-5585

Sales Office 475 17th St. Suite 460 Denver Co., 80202
Phone: (303) 296-1158



Table of Contents

1 Job Details & Summary	3
1.1 Geometry	3
1.2 Equipment / People	3
1.3 Timing	3
1.4 General Job Information	3
1.5 Job Details	3
1.6 Job Details (cont.)	3
1.7 Circulation	3
1.8 Job Execution Information	4
1.9 Job Fluid Details	4
2 Job Logs	5
3 Water Analysis	6
4 Pump Diagrams	7

1 Job Details & Summary

1.1 Geometry

Type	Function	OD (in)	ID (in)	Weight (lb/ft)	Thread	Top (ft)	Bottom (ft)	Excess (%)
Casing	Inner	9.625	8.921	36	LTC	0	1827	0
Casing	Outer	16	15.25	65	n/a	0	40	0
Open Hole	Outer	n/a	13.5	n/a	n/a	40	1838	15

1.2 Equipment / People

Unit Type	Unit	Employee #1	Mileage
Bulk Trailer	508	Martinez, Michael	180
Bulk Trailer	509	Staples, Anthony	180
Cement Pump	PPC11250	Boyd, Brian	180
Plug Container	150519		180
Swage	150539		180

1.3 Timing

Event	Date/Time
Call Out	4/10/2017 18:00
Depart Facility	4/10/2017 19:00
On Location	4/10/2017 23:00
Rig Up Iron	4/10/2017 23:30
Job Started	4/11/2017 01:35
Job Completed	4/11/2017 03:15
Rig Down Iron	4/11/2017 03:25
Depart Location	4/11/2017 04:30

1.4 General Job Information

Metrics	Value
Well Fluid Density	8.34 lb/gal
Well Fluid Type	WBM
Rig Circulation Vol	100 bbls
Rig Circulation Time	0.5 hours
Calculated Displacement	138 bbls
Actual Displacement	138 bbls
Total Spacer to Surface	20 bbls
Total CMT to Surface	33 bbls
Well Topped Out	No
Top Out Volume	0 bbls

1.5 Job Details

Metrics	Value
Flare Prior to Job	No
Flare During Job	No
Flare at End of Job	No
Well Full Prior to Job	Yes
Well Fluid Density Into Well	8.34 lb/gal
Well Fluid Density Out of Well	8.34 lb/gal

1.6 Job Details (cont.)

Metrics	Value
BHCT	95 °F
BHST	120 °F

1.7 Circulation

Lost Circulation Experienced
No



1.8 Job Execution Information

Job	Fluid	Product	Function	Density (lb/gal)	Yield (ft ³ /sk)	Water Rq. (gal/sk)	Water Rq. (gal/bbl)	Volume (sks)	Volume (bbl)	Top (ft)
1	1	Water	Flush	8.33			42.00		20.00	0
1	2	ALTCem S100-12	Lead	12.00	2.53	14.85		293.00	131.84	0
1	3	ALTCem S100-12	Tail	12.50	2.22	12.58		135.00	53.46	1252
1	4	Water	DisplacementFinal	8.33			42.00		136.00	0

1.9 Job Fluid Details

Job	Fluid	Type	Fluid	Product	Function	Conc.	Uom
1	2	Lead	ALTCem S100-12	AC3-10	Cement	100.00	%
1	2	Lead	ALTCem S100-12	ACL-10	Accelerator	2.00	lb/sk
1	2	Lead	ALTCem S100-12	ACL-20	Accelerator	5.00	%BWOB
1	2	Lead	ALTCem S100-12	ADF-11	Defoamer	0.30	%BWOB
1	2	Lead	ALTCem S100-12	ALC-10	LostCirculation	0.13	lb/sk
1	2	Lead	ALTCem S100-12	AXE-30	Extender	2.00	lb/sk
1	3	Tail	ALTCem S100-12	AC3-10	Cement	100.00	%
1	3	Tail	ALTCem S100-12	ACL-10	Accelerator	2.00	lb/sk
1	3	Tail	ALTCem S100-12	ACL-20	Accelerator	5.00	%BWOB
1	3	Tail	ALTCem S100-12	ADF-11	Defoamer	0.30	%BWOB
1	3	Tail	ALTCem S100-12	ALC-10	LostCirculation	0.13	lb/sk
1	3	Tail	ALTCem S100-12	AXE-30	Extender	2.00	lb/sk



2 Job Logs

Line	Event	Date (MM/DD/YY)	Time (HH:MM)	Density (lb/gal)	Pump Rate (bpm)	Pump Volume (bbls)	Pipe Pressure (psi)	Comment
1	Call Out	4/10/2017	18:00					Customer requested crew on location at 20:00
2	Depart Shop	4/10/2017	19:00					Crew departs shop
3	Arrive On Location	4/10/2017	22:00					Arrive on location and get numbers from company man
4	Safety Meeting	4/10/2017	23:20					Meeting with BJ crew over spotting equipment and rig up
5	Rig Up Iron	4/10/2017	23:35					Rig up iron and hoses
6	Waiting	4/11/2017	00:00					Waiting on rig to finish running casing
7	Rig Lands Casing	4/11/2017	01:00					Rig lands casing and circulate well
8	Safety Meeting	4/11/2017	01:25					Safety meeting with BJ, rig crew and company man go over job procedure and job hazards
9	Drop Bottom Plug	4/11/2017	01:33					Before stabbing cement head drop bottom plug
10	Fill Lines	4/11/2017	01:35	8.33	2	3	30	Fill pumps and lines
11	Pressure Test	4/11/2017	01:38	8.33	0.5	0.5	3500	Pressure test iron to 3500 PSI
12	Pump Spacer	4/11/2017	01:40	8.33	5	20	125	Pump 20 bbls of FW spacer
13	Pump Lead Cement	4/11/2017	01:47	12	5	132	195	Pump 131 bbls of lead cement at 12 PPG (293 sks, 12 PPG, 2.53 Yield, 14.85 Gals/sks)
14	Pump Tail Cement	4/11/2017	02:10	12.5	5	53.5	175	Pump 53.5 bbls of tail cement at 12.5 PPG (135 sks, 12.5 PPG, 2.22 Yield, 12.58 Gals/sks)
15	Shut Down	4/11/2017	02:23					Shut down pumping
16	Drop Top Plug	4/11/2017	02:29					Drop top plug and verify with company man plug went down hole
17	Pump Displacement	4/11/2017	02:30	8.33	7	138	498	
18	Cement To Surface	4/11/2017	02:50	12.5	7		560	
19	Slow Rate	4/11/2017	02:53	8.33	2.5	128	760	At 128 bbls away slow rate
20	Land Plug	4/11/2017	02:59	8.33	2.5		1231	
21	Casing Test	4/11/2017	03:00	8.33	0.5		1572	Pressure up to 1500 PSI and hold for 15 mins to perform casing test
22	Check Floats	4/11/2017	03:15					Check floats and got 1 bbl back
23	Safety Meeting	4/11/2017	03:20					Safety meeting with BJ crew over rigging down iron and equipment
24	Rig Down Iron	4/11/2017	03:25					Rig down iron and hoses
25	Depart Location	4/11/2017	04:30					Crew departs from location

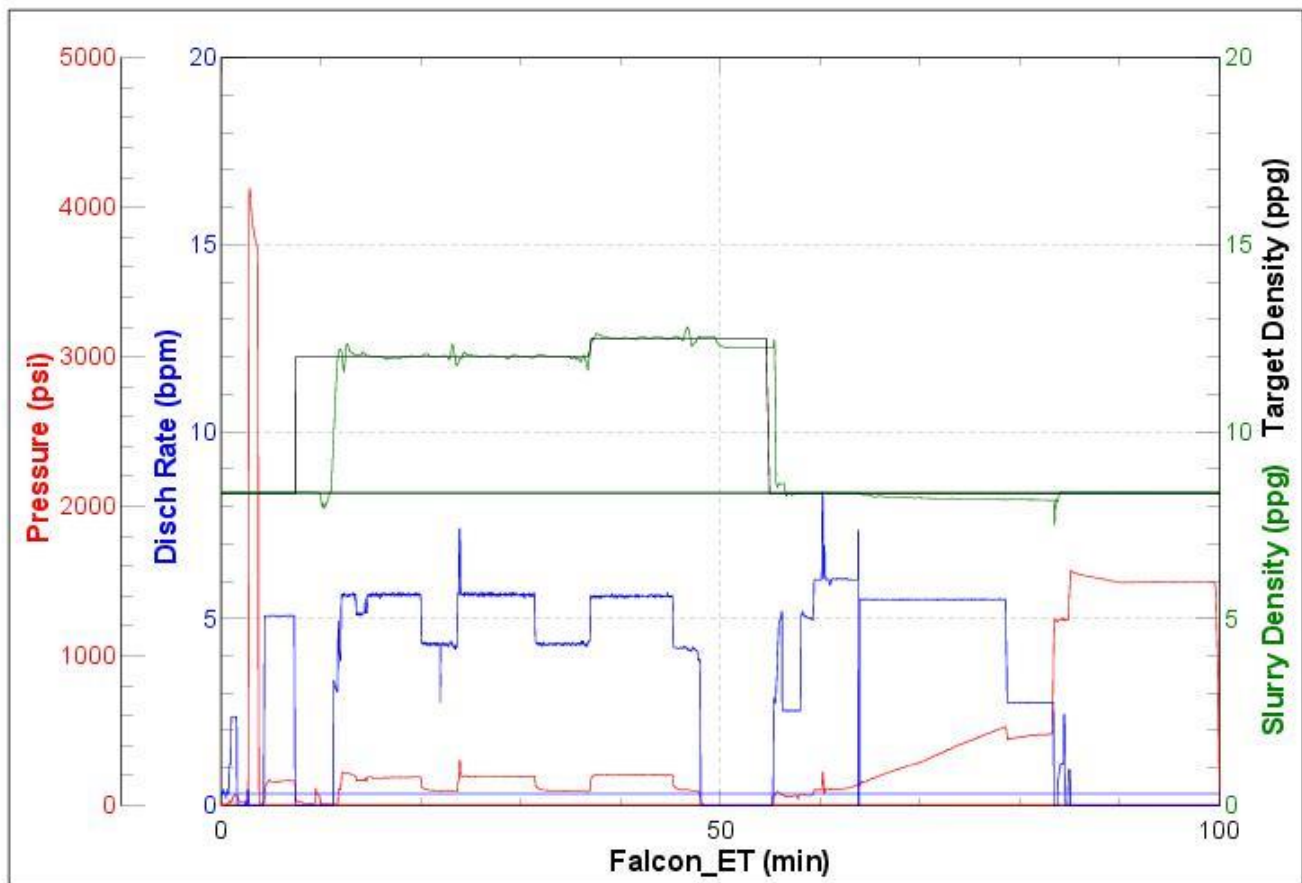


3 Water Analysis

Metrics	Value	Recommended
Water Source	Upright Rig Tank	
Temperature	58 °F	50-80 °F
pH Level	7	5.5-8.5
Chlorides	0 mg/L	0-3000 mg/L
Total Alkalinity	80	0-1000
Total Hardness	70 mg/L	0-500 mg/L
Carbonates	140 mg/L	0-100 mg/L
Sulfates	<200 mg/L	0-1500 mg/L
Potassium	450 mg/L	0-3000 mg/L
Iron	0 mg/L	0-300 mg/L

4 Pump Diagrams

Job Number:
Customer: PetroShare
Well Name: Shook 3-10-1NBH



Job Start: Tuesday, April 11, 2017