



Petroshare Corporation

SURFACE POST JOB REPORT

Shook 3-10-1CDH 05-001-09968
S:3 T:1S R:67W Adams CO

CallSheet #: 700
Proposal #: 13143



SURFACE Post Job Report

Attention: Mr. Bill Lloyd | (303) 500-1160 | blloyd@petroshare.com
Petroshare Corporation
9635 Maroon Circle, Ste 400 | Englewood, CO 80112

Dear Mr. Lloyd,

Thank you for the opportunity to provide cementing services on this well. BJ Services strives to achieve complete customer satisfaction. If you have any questions regarding the services or data provided, please contact BJ Services at any time.

Sincerely,

Zen Keith

Technical Specialist-II | (307) 757-7178 | Zen.Keith@bjservices.com

Field Office 1716 East Allison Rd., Cheyenne WY, 82007
Phone: (307) 638-5585

Sales Office 475 17th St. Suite 460 Denver Co., 80202
Phone: (303) 296-1158



Table of Contents

1 Job Details & Summary	3
1.1 Geometry	3
1.2 Equipment / People	3
1.3 Timing	3
1.4 General Job Information	3
1.5 Job Details	3
1.6 Job Details (cont.)	3
1.7 Circulation	3
1.8 Job Execution Information	4
1.9 Job Fluid Details	4
2 Job Logs	5
3 Water Analysis	6
4 Pump Diagrams	7

1 Job Details & Summary

1.1 Geometry

Type	Function	OD (in)	ID (in)	Weight (lb/ft)	Thread	Top (ft)	Bottom (ft)	Excess (%)
Casing	Inner	9.625	8.921	36	LTC	0	1800	0
Casing	Outer	16	15.25	65	n/a	0	40	0
Open Hole	Outer	n/a	13.5	n/a	n/a	40	1800	25

1.2 Equipment / People

Unit Type	Unit	Employee #1	Mileage
Bulk Trailer	E421	Martinez, Michael	180
Bulk Trailer	E467	Andrew Chambers	180
Cement Pump	PPC11250	Staples, Anthony	180
Light Duty Pickups	3	Boyd, Brian	180

1.3 Timing

Event	Date/Time
Call Out	4/8/2017 23:00
Depart Facility	4/9/2017 01:00
On Location	4/9/2017 02:30
Rig Up Iron	4/9/2017 04:15
Job Started	4/9/2017 10:07
Job Completed	4/9/2017 11:57
Rig Down Iron	4/9/2017 12:05
Depart Location	4/9/2017 13:00

1.4 General Job Information

Metrics	Value
Well Fluid Density	8.34 lb/gal
Well Fluid Type	WBM
Rig Circulation Vol	100 bbls
Rig Circulation Time	0.5 hours
Calculated Displacement	138 bbls
Actual Displacement	137 bbls
Total Spacer to Surface	20 bbls
Total CMT to Surface	93 bbls
Well Topped Out	No
Top Out Volume	0 bbls

1.5 Job Details

Metrics	Value
Flare Prior to Job	No
Flare During Job	No
Flare at End of Job	No
Well Full Prior to Job	Yes
Well Fluid Density Into Well	8.34 lb/gal
Well Fluid Density Out of Well	8.33 lb/gal

1.6 Job Details (cont.)

Metrics	Value
BHCT	95 °F
BHST	120 °F

1.7 Circulation

Lost Circulation Experienced
No



1.8 Job Execution Information

Job	Fluid	Product	Function	Density (lb/gal)	Yield (ft ³ /sk)	Water Rq. (gal/sk)	Water Rq. (gal/bbl)	Volume (sks)	Volume (bbl)	Top (ft)
1	1	Water	Flush	8.33			42.00		20.00	0
1	2	ALTCem S100-12	Lead	12.00	2.53	14.85		317.00	142.64	0
1	3	ALTCem S100-12	Tail	12.50	2.22	12.58		146.00	57.82	1200
1	4	Water	DisplacementFinal	8.33			42.00		136.00	0

1.9 Job Fluid Details

Job	Fluid	Type	Fluid	Product	Function	Conc.	Uom
1	2	Lead	ALTCem S100-12	AC3-10	Cement	100.00	%
1	2	Lead	ALTCem S100-12	ACL-10	Accelerator	2.00	lb/sk
1	2	Lead	ALTCem S100-12	ACL-20	Accelerator	5.00	%BWOB
1	2	Lead	ALTCem S100-12	ADF-11	Defoamer	0.30	%BWOB
1	2	Lead	ALTCem S100-12	ALC-10	LostCirculation	0.13	lb/sk
1	2	Lead	ALTCem S100-12	AXE-30	Extender	2.00	lb/sk
1	2	Lead	ALTCem S100-12	ADF-20	Defoamer	100.00	%
1	3	Tail	ALTCem S100-12	AC3-10	Cement	100.00	%
1	3	Tail	ALTCem S100-12	ACL-10	Accelerator	2.00	lb/sk
1	3	Tail	ALTCem S100-12	ACL-20	Accelerator	5.00	%BWOB
1	3	Tail	ALTCem S100-12	ADF-11	Defoamer	0.30	%BWOB
1	3	Tail	ALTCem S100-12	ALC-10	LostCirculation	0.13	lb/sk
1	3	Tail	ALTCem S100-12	AXE-30	Extender	2.00	lb/sk

2 Job Logs

Line	Event	Date (MM/DD/YY)	Time (HH:MM)	Density (lb/gal)	Pump Rate (bpm)	Pump Volume (bbls)	Pipe Pressure (psi)	Comment
1	Call Out	4/8/2017	23:00					Customer requested crew on location at 5:00
2	Depart Shop	4/9/2017	01:00					Depart from shop
3	Arrive on Location	4/9/2017	02:30					Crew arrives on location and meet with customer to get numbers
4	Safety Meeting	4/9/2017	04:00					Safety meeting with BJ crew over rigging up iron
5	Rig Up Iron	4/9/2017	04:15					Rig up iron and spot equipment
6	Waiting	4/9/2017	05:00					Waiting on rig to run casing
7	Rig Lands Casing	4/9/2017	09:20					Rig lands casing and circulates 100 bbls
8	Safety Meeting	4/9/2017	09:40					Safety meeting with BJ, company man and company man over job procedure and hazards of the job
9	Fill Lines	4/9/2017	10:08	8.33	2	3	30	Fill lines and pumps
10	Pressure Test	4/9/2017	10:10	8.33	0.5	0.5	3700	Pressure test iron and head to 3500 PSI
11	Pump Spacer	4/9/2017	10:15	8.33	5	20	67	Pump 20 bbls of fresh water spacer
12	Pump Lead Cement	4/9/2017	10:30	12	5	142	169	Pump 142 bbls of lead cement at 12 PPG (317 sks, 12 PPG, 2.53 Yield, 14.85 Gals/Sks)
13	Pump Tail Cement	4/9/2017	10:54	12.5	5	57	128	Pump 57 bbls of tail cement at 12.5 PPG (146 sks, 12.5 PPG, 2.22 Yield, 12.58 Gals/Sks)
14	Shut Down	4/9/2017	11:05					Shut down pumping
15	Drop Plug	4/9/2017	11:10					Drop top plug and have company man verify plug dropped
16	Pump Displacement	4/9/2017	11:11	8.33	7	137	400	Pump 138 bbls of fresh water displacement
17	Cement To Surface	4/9/2017	11:23	12	7	45	513	At 45 bbls into displacement got cement back to surface got 93 bbls of cement back
18	Slow Rate	4/9/2017	11:36	8.33	2	128	750	At 128 bbls of displacement slow rate down to 2 bpm
19	Land Plug	4/9/2017	11:41	8.33	2	137	1100	Landed plug at 1100 PSI FCP of 750
20	Casing Test	4/9/2017	11:43	8.33	0.5	0.5	1500	Perform 15 mins casing test pressure up to 1500 PSI
21	Check Floats	4/9/2017	11:57					Check floats and got 1 bbl back
22	Safety Meeting	4/9/2017	12:00					Meeting with BJ crew over rigging down iron and equipment
23	Rig Down iron	4/9/2017	12:05					Rig down iron and hoses
24	Depart Location	4/9/2017	13:00					Crew departs from location

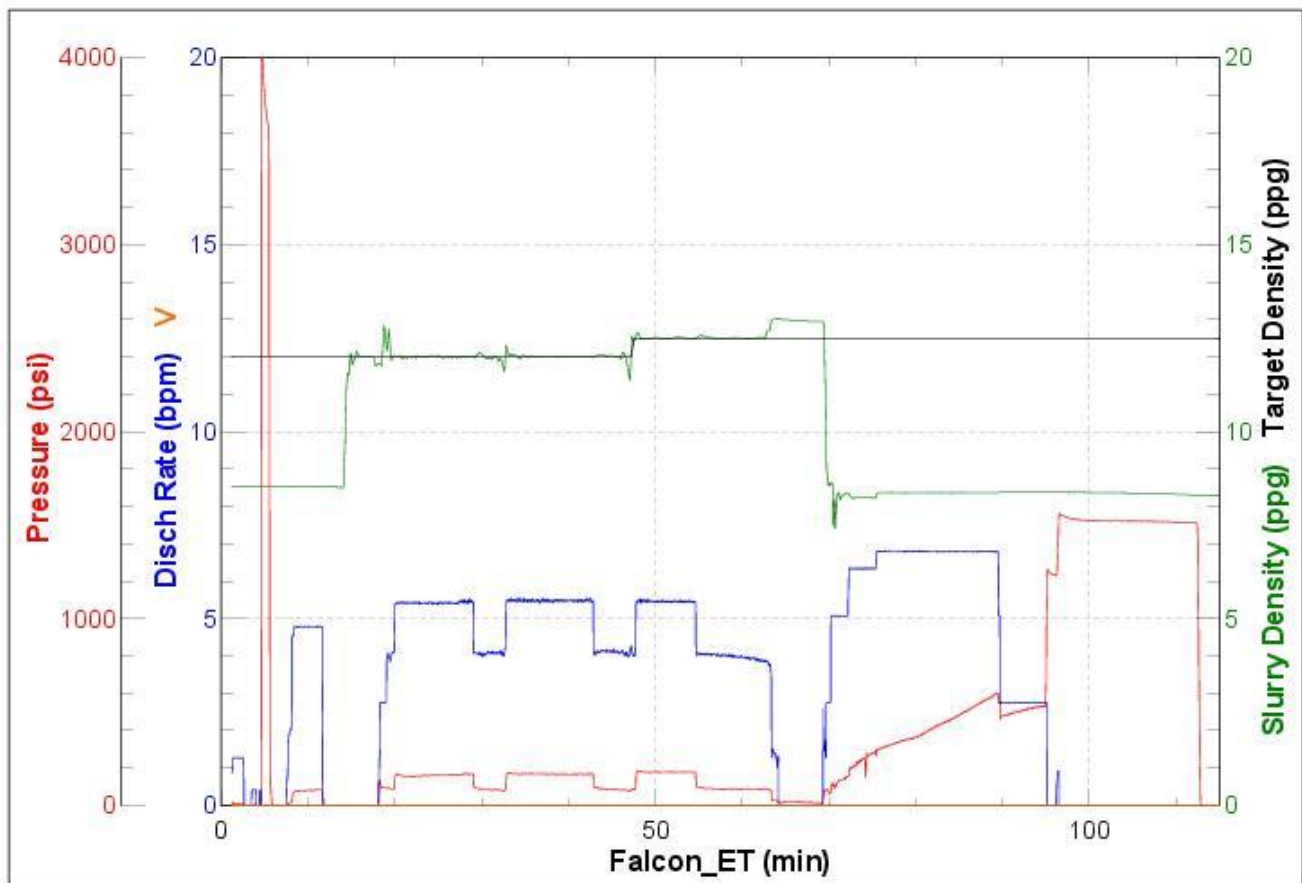


3 Water Analysis

Metrics	Value	Recommended
Water Source	Flat Tank	
Temperature	59 °F	50-80 °F
pH Level	7	5.5-8.5
Chlorides	0 mg/L	0-3000 mg/L
Total Alkalinity	80	0-1000
Total Hardness	70 mg/L	0-500 mg/L
Carbonates	140 mg/L	0-100 mg/L
Sulfates	<200 mg/L	0-1500 mg/L
Potassium	450 mg/L	0-3000 mg/L
Iron	0 mg/L	0-300 mg/L

4 Pump Diagrams

Job Number:
Customer: PetroShare
Well Name: Shook 3-10-1CDH



Job Start: Sunday, April 09, 2017