

### LAND SURVEYOR'S CERTIFICATION

LAMP, RYNEARSON & ASSOCIATES, INC., OF FT. COLLINS, COLORADO HAS, IN ACCORDANCE WITH A REQUEST FROM BLANE THINGELSTAD FOR EXTRACTION OIL AND GAS, DETERMINED THE SURFACE LOCATION OF THE WELL DESIGNATED AS WAKE NORTH 24 TO BE 856' FROM THE SOUTH LINE AND 1600' FROM THE EAST LINE OF SECTION 32, TOWNSHIP 6 NORTH, RANGE 65 WEST OF THE 6TH P.M., WELD COUNTY, COLORADO.

### NOTES:

- DISTANCES ARE MEASURED PERPENDICULAR TO NEAREST SECTION LINE AND ARE SHOWN ON THE SAME SIDE OF THE SECTION LINE WHERE THE WELL IS LOCATED.
- THIS MAP DOES NOT REPRESENT A MONUMENTED BOUNDARY SURVEY. SIXTEENTH CORNER LOCATIONS ARE COMPUTED, UNLESS OTHERWISE NOTED.
- BOTTOM HOLE LOCATIONS AND HORIZONTAL COMPLETION ZONE PROVIDED BY OTHERS.

### BASIS OF BEARING:

THE SOUTH LINE OF THE SOUTHEAST QUARTER OF SECTION 32-T6N-R65W BEARS N85°52'57\"W BETWEEN THE SOUTHEAST CORNER OF SECTION 32 MONUMENTED WITH A 2 1/2\" A.C. IN R.B. STAMPED \"LS 17500\" AND THE SOUTH QUARTER CORNER OF SECTION 32 MONUMENTED WITH A 3 1/4\" A.C. IN R.B. STAMPED \"LS 28259\" BASED ON THE COLORADO STATE PLANE COORDINATE SYSTEM, NORTH ZONE 0501.

ELEVATIONS ARE NAVD 88, USING THE CONUS GEOID 03 AS OBSERVED FROM GPS OBSERVATIONS

LAINE A. LANDAU  
COLORADO PLS 31159  
DATE OF SURVEY: 8/19/2010 (SECTION CONTROL)  
DATE OF SURVEY: 05/18/2016 (WELL LOCATION)



*Laine A. Landau*



**LAMP RYNEARSON**  
& ASSOCIATES

4715 Innovation Drive 970.226.0342 | P  
Fort Collins, CO 80525 970.226.0879 | F  
www.LRA-Inc.com

PROPOSED WELL LOCATION EXHIBIT  
WAKE NORTH 24  
1 OF 2

DRAWN BY  
JJM  
PATH/FILENAME

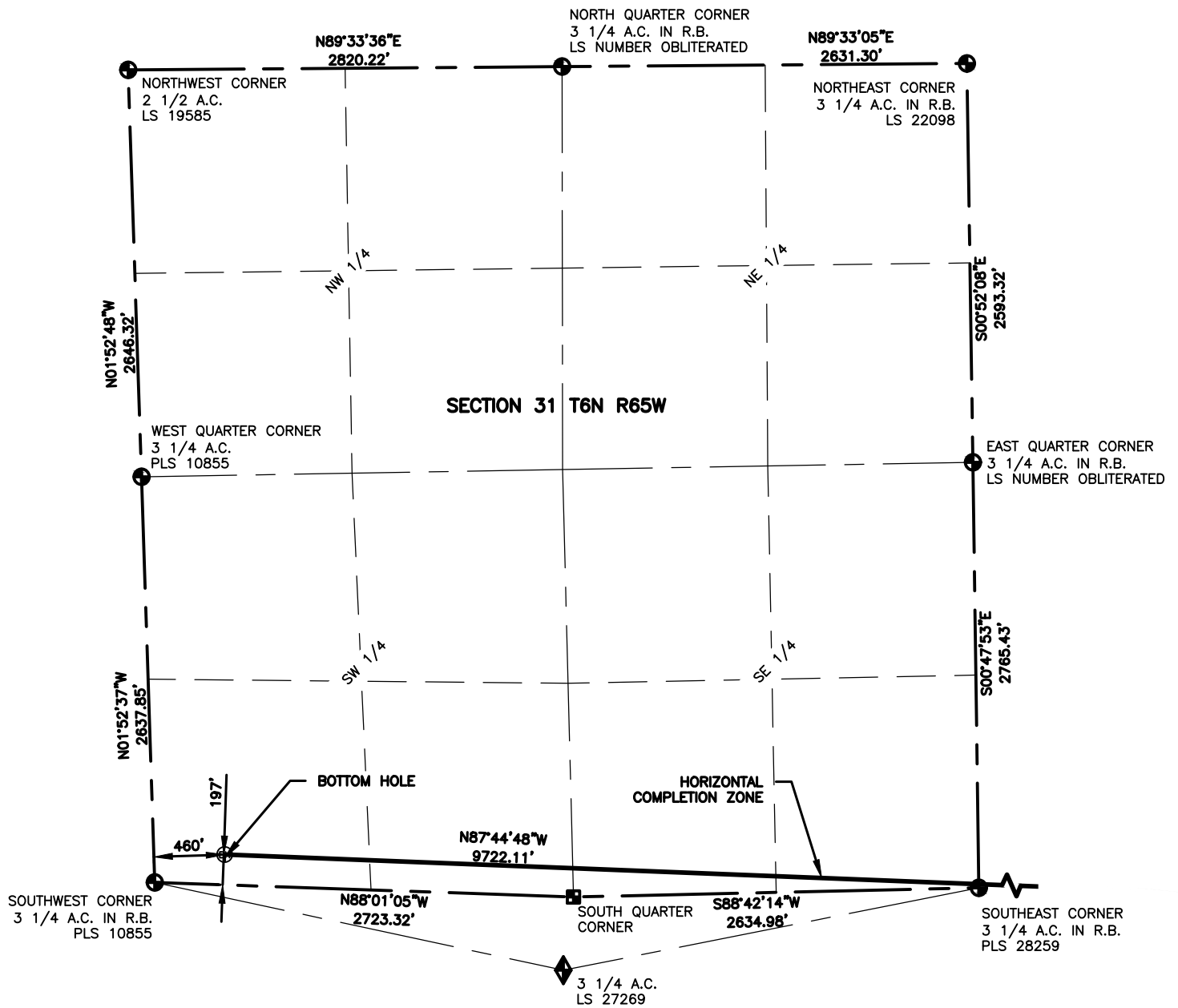
DATE  
2/16/17  
P:\\_Engineering\0215045.01 Wake North

COGCC ID  
0215045.01

PROJECT - TASK NUMBER  
0215045.02  
EXHIBITS\WAKE NORTH 24 - 1.dwg

BOOK AND PAGE  
MRI-05 34-36  
PRELIMINARY PLAT

SURFACE - LOCATION  
SW1/4, SE1/4, SEC 32, T6N,  
R65W

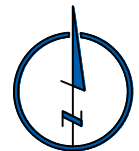


#### NOTES:

- DISTANCES ARE MEASURED PERPENDICULAR TO NEAREST SECTION LINE AND ARE SHOWN ON THE SAME SIDE OF THE SECTION LINE WHERE THE WELL IS LOCATED.
- THIS MAP DOES NOT REPRESENT A MONUMENTED BOUNDARY SURVEY. SIXTEENTH CORNER LOCATIONS ARE COMPUTED, UNLESS OTHERWISE NOTED.
- BOTTOM HOLE LOCATIONS AND HORIZONTAL COMPLETION ZONE PROVIDED BY OTHERS.

#### LEGEND

- ALIQUOT CORNER
- BOTTOM HOLE
- COMPUTED FROM GLO RECORDS
- UNION COLONY CORNER
- A.C. ALUMINUM CAP
- R.B. RANGE BOX



SCALE: 1"= 1000'  
U.S. SURVEY FEET



**LAMP RYNEARSON**  
& ASSOCIATES

4715 Innovation Drive 970.226.0342 | P  
Fort Collins, CO 80525 970.226.0879 | F  
www.LRA-Inc.com

PROPOSED WELL LOCATION EXHIBIT  
WAKE NORTH 24  
2 OF 2

DRAWN BY  
JJM  
PATH/FILENAME

DATE  
2/16/17  
P:\\_Engineering\0215045.01 Wake North 32-K\DRAWINGS\EXHIBITS\PRELIMINARY PLAT

COGCC ID  
0215045.01

PROJECT - TASK NUMBER  
0215045.02

BOOK AND PAGE  
MRI-05 34-36

**SURFACE - LOCATION**  
SW1/4, SE1/4, SEC 32, T6N,  
R65W