

T3S
T4S

**PROPOSED LOCATION:
PROSPER FARMS #4-65 11-12
3AH, 3BH, 3CH & 3DH**

T4S
T5S

R 66 W
R 65 W

R 65 W
R 64 W

REV: 1 09-21-17 J.L.G. (PAD MOVE)

LEGEND:

PROPOSED LOCATION



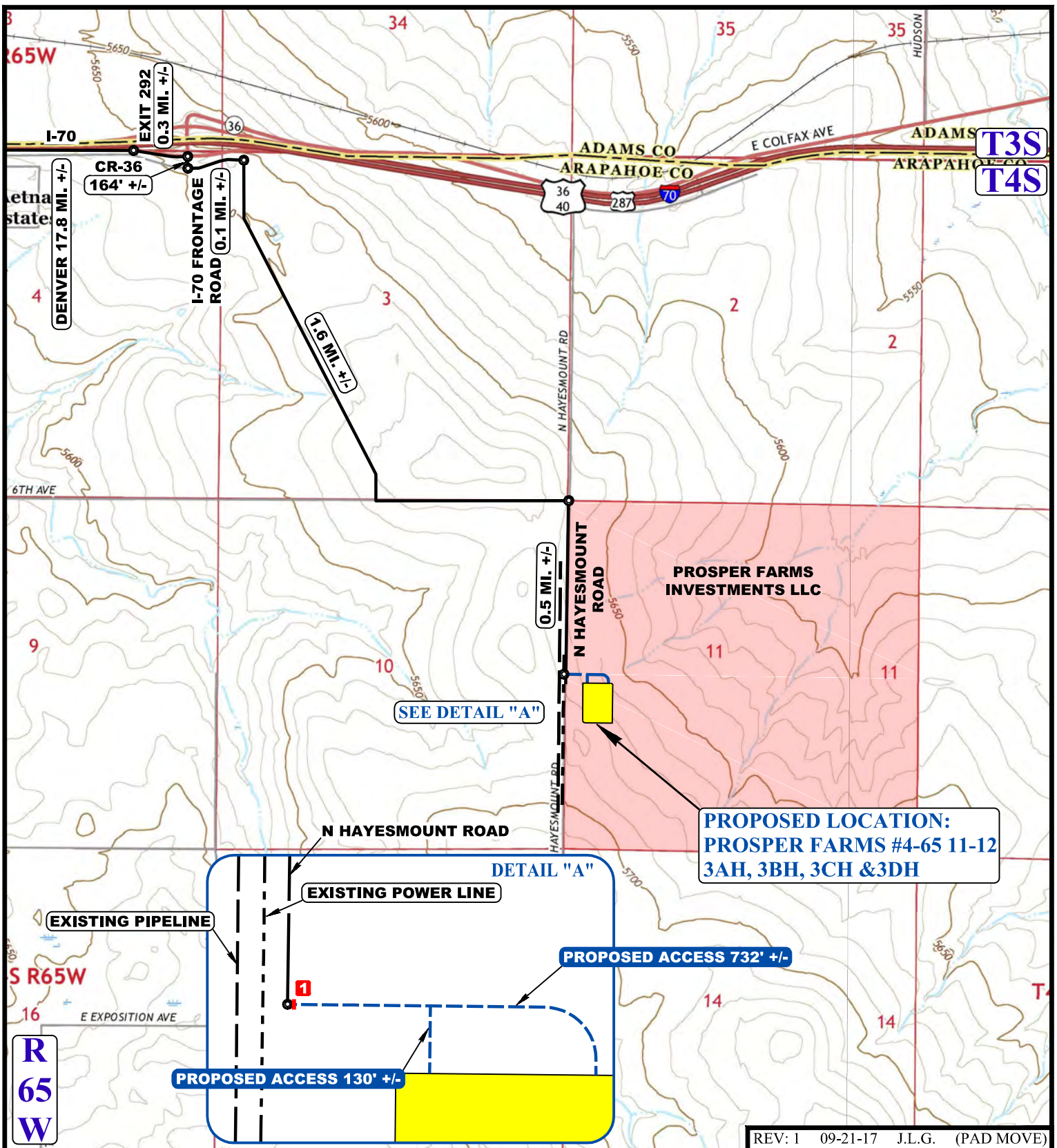
ConocoPhillips Company

**PROSPER FARMS #4-65 11-12 3AH, 3BH, 3CH & 3DH
NW 1/4 SW 1/4, SECTION 11, T4S, R65W, 6th P.M.
ARAPAHOE COUNTY, COLORADO**



UELS, LLC
Corporate Office * 85 South 200 East
Vernal, UT 84078 * (435) 789-1017

SURVEYED BY	D.N., C.M.	09-21-17	SCALE
DRAWN BY	J.B.	07-07-17	1 : 100,000
ACCESS ROAD MAP			TOPO A



NOTE: PARCEL DATA SHOWN HAS BEEN OBTAINED FROM VARIOUS SOURCES AND SHOULD BE USED FOR MAPPING, GRAPHIC AND PLANNING PURPOSES ONLY. NO WARRANTY IS MADE BY UINTAH ENGINEERING AND LAND SURVEYING (UELS) FOR ACCURACY OF THE PARCEL DATA.

LEGEND:

- EXISTING ROAD
- PROPOSED ROAD
- EXISTING POWER LINE
- EXISTING PIPELINE

INSTALL 18" CULVERT



ConocoPhillips Company

**PROSPER FARMS #4-65 11-12 3AH, 3BH, 3CH & 3DH
NW 1/4 SW 1/4, SECTION 11, T4S, R65W, 6th P.M.
ARAPAHOE COUNTY, COLORADO**

SURVEYED BY	D.N., C.M.	09-21-17	SCALE
DRAWN BY	J.B.	07-07-17	1 : 24,000

ACCESS ROAD MAP

TOPO B



UELS, LLC
Corporate Office * 85 South 200 East
Vernal, UT 84078 * (435) 789-1017