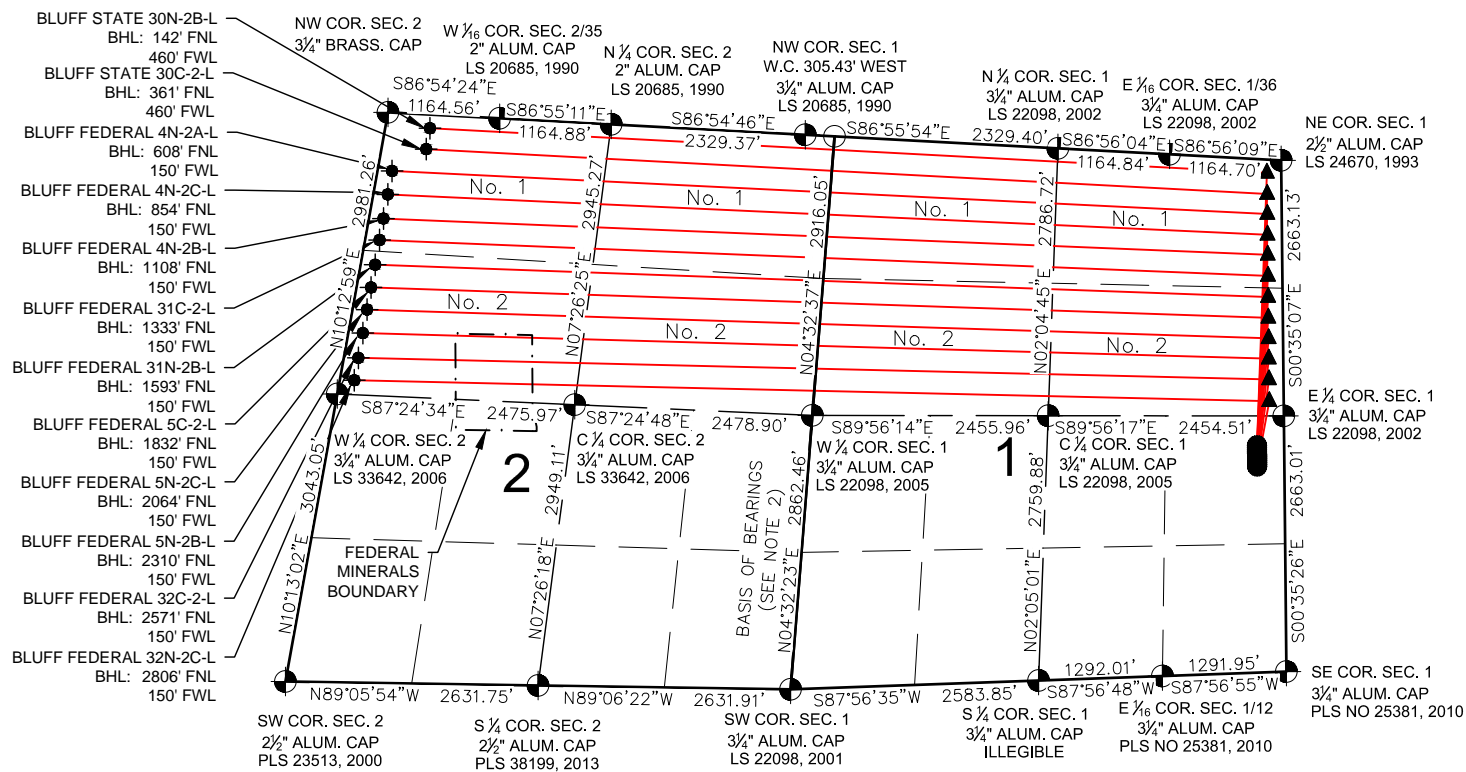


BLUFF FEDERAL STATE 40-1 PAD MULTI-WELL PLAN

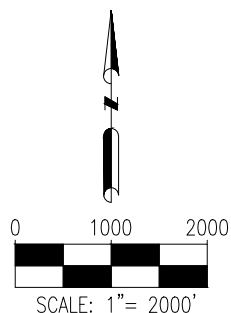


NOTES:



1. THIS FIELD SURVEY CONFORMS TO THE MINIMUM STANDARDS SET BY THE C.O.G.C.C., RULE NO. 215
2. BEARINGS ARE BASED ON THE ASSUMPTION THAT THE WEST LINE OF THE SOUTHWEST QUARTER OF SECTION 1, BEARS N04°32'23\"E BETWEEN THE MONUMENTS SHOWN HEREON.
3. ALL DISTANCES AND BEARINGS SHOWN HEREON ARE GROUND VALUES AS GPS MEASURED IN THE FIELD, WITH TIES TO WELLS MEASURED PERPENDICULAR TO SECTION LINES. THIS LOW DISTORTION PROJECTION (LDP) IS BASED ON THE NORTH AMERICAN DATUM OF 1983, U.S. SURVEY FOOT WITH A LATITUDE ORIGIN OF 40.392439°N, A CENTRAL MERIDIAN LONGITUDE OF 104.888128°W, AND A SCALE FACTOR ON THE CENTRAL MERIDIAN OF 1.000232 (EXACT). THE LDP BASIS OF BEARINGS IS GEODETIC NORTH.
4. FIELD VERIFICATION OF MONUMENTS COMPLETED WITHIN 1 YEAR OF SIGNATURE DATE.

LEGEND

- ⊕ = EXISTING MONUMENT
- = CALCULATED POSITION
- = PROPOSED WELL
- ▲ = BOTTOM HOLE
- ▲ = TOP OF PRODUCTION ZONE
- BHL = BOTTOM HOLE LOCATION

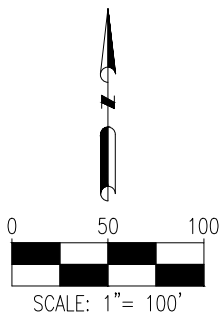


SHEET 1 OF 3

 7535 Hilltop Circle Denver, CO 80221 (303) 928-7128 www.ascentgeomatics.com	FIELD DATE: 06-08-17		SITE NAME: BLUFF FEDERAL STATE 40-1 PAD		<div>PREPARED FOR:</div> <div> SRC ENERGY</div>
	DRAWING DATE: 09-13-17		SURFACE LOCATION: NE 1/4 SE 1/4 SEC. 1, T5N, R67W, 6TH P.M. WELD COUNTY, COLORADO		
	BY: CSG	CHECKED BY: KAD			

BLUFF FEDERAL STATE 40-1 PAD MULTI-WELL PLAN

- BLUFF STATE 30N-2B-L
- 20' ● BLUFF STATE 30C-2-L
- 20' ● BLUFF FEDERAL 4N-2A-L
- 20' ● BLUFF FEDERAL 4N-2C-L
- 20' ● BLUFF FEDERAL 4N-2B-L
- 20' ● BLUFF FEDERAL 31C-2-L
- 20' ● BLUFF FEDERAL 31N-2B-L
- 20' ● BLUFF FEDERAL 5C-2-L
- 20' ● BLUFF FEDERAL 5N-2C-L
- 20' ● BLUFF FEDERAL 5N-2B-L
- 20' ● BLUFF FEDERAL 32C-2-L
- 20' ● BLUFF FEDERAL 32N-2C-L



LEGEND

● = PROPOSED WELL

SHEET 2 OF 3



BLUFF FEDERAL STATE 40-1 PAD MULTI-WELL PLAN

BLUFF STATE 30N-2B-L

SURFACE HOLE:
2367' FSL & 282' FEL
LAT: 40.428053°
LON: -104.833511°

TOP OF PRODUCTION ZONE:
138' FNL & 150' FEL
LAT: 40.435840°
LON: -104.833133°

BOTTOM HOLE:
142' FNL & 460' FWL
LAT: 40.437126°
LON: -104.864443°

FORMATION:
NIOBRARA

BLUFF STATE 30C-2-L

SURFACE HOLE:
2347' FSL & 282' FEL
LAT: 40.427998°
LON: -104.833510°

TOP OF PRODUCTION ZONE:
358' FNL & 150' FEL
LAT: 40.435238°
LON: -104.833125°

BOTTOM HOLE:
361' FNL & 460' FWL
LAT: 40.436530°
LON: -104.864584°

FORMATION:
CODELL

BLUFF FEDERAL 4N-2A-L

SURFACE HOLE:
2327' FSL & 283' FEL
LAT: 40.427943°
LON: -104.833510°

TOP OF PRODUCTION ZONE:
565' FNL & 150' FEL
LAT: 40.434667°
LON: -104.833118°

BOTTOM HOLE:
608' FNL & 150' FWL
LAT: 40.435905°
LON: -104.865863°

FORMATION:
NIOBRARA

BLUFF FEDERAL 4N-2C-L

SURFACE HOLE:
2307' FSL & 283' FEL
LAT: 40.427888°
LON: -104.833509°

TOP OF PRODUCTION ZONE:
781' FNL & 150' FEL
LAT: 40.434072°
LON: -104.833111°

BOTTOM HOLE:
854' FNL & 150' FWL
LAT: 40.435235°
LON: -104.866021°

FORMATION:
NIOBRARA

BLUFF FEDERAL 4N-2B-L

SURFACE HOLE:
2287' FSL & 283' FEL
LAT: 40.427833°
LON: -104.833509°

TOP OF PRODUCTION ZONE:
989' FNL & 150' FEL
LAT: 40.433500°
LON: -104.833103°

BOTTOM HOLE:
1108' FNL & 150' FWL
LAT: 40.434545°
LON: -104.866184°

FORMATION:
NIOBRARA

BLUFF FEDERAL 31C-2-L

SURFACE HOLE:
2267' FSL & 283' FEL
LAT: 40.427778°
LON: -104.833508°

TOP OF PRODUCTION ZONE:
1209' FNL & 150' FEL
LAT: 40.432895°
LON: -104.833096°

BOTTOM HOLE:
1333' FNL & 150' FWL
LAT: 40.433933°
LON: -104.866329°

FORMATION:
CODELL

BLUFF FEDERAL 31N-2B-L

SURFACE HOLE:
2247' FSL & 283' FEL
LAT: 40.427723°
LON: -104.833508°

TOP OF PRODUCTION ZONE:
1429' FNL & 150' FEL
LAT: 40.432290°
LON: -104.833088°

BOTTOM HOLE:
1593' FNL & 150' FWL
LAT: 40.433225°
LON: -104.866496°

FORMATION:
NIOBRARA

BLUFF FEDERAL 5C-2-L

SURFACE HOLE:
2227' FSL & 283' FEL
LAT: 40.427668°
LON: -104.833507°

TOP OF PRODUCTION ZONE:
1646' FNL & 150' FEL
LAT: 40.431696°
LON: -104.833081°

BOTTOM HOLE:
1832' FNL & 150' FWL
LAT: 40.432575°
LON: -104.866650°

FORMATION:
CODELL

BLUFF FEDERAL 5N-2C-L

SURFACE HOLE:
2207' FSL & 283' FEL
LAT: 40.427614°
LON: -104.833507°

TOP OF PRODUCTION ZONE:
1858' FNL & 150' FEL
LAT: 40.431113°
LON: -104.833073°

BOTTOM HOLE:
2064' FNL & 150' FWL
LAT: 40.431942°
LON: -104.866799°

FORMATION:
NIOBRARA

BLUFF FEDERAL 5N-2B-L

SURFACE HOLE:
2187' FSL & 283' FEL
LAT: 40.427559°
LON: -104.833506°

TOP OF PRODUCTION ZONE:
2069' FNL & 150' FEL
LAT: 40.430531°
LON: -104.833066°

BOTTOM HOLE:
2310' FNL & 150' FWL
LAT: 40.431272°
LON: -104.866957°

FORMATION:
NIOBRARA

BLUFF FEDERAL 32C-2-L

SURFACE HOLE:
2167' FSL & 283' FEL
LAT: 40.427504°
LON: -104.833506°

TOP OF PRODUCTION ZONE:
2285' FNL & 150' FEL
LAT: 40.429937°
LON: -104.833059°

BOTTOM HOLE:
2571' FNL & 150' FWL
LAT: 40.430563°
LON: -104.867125°

FORMATION:
CODELL

BLUFF FEDERAL 32N-2C-L

SURFACE HOLE:
2147' FSL & 283' FEL
LAT: 40.427449°
LON: -104.833505°

TOP OF PRODUCTION ZONE:
2512' FNL & 150' FEL
LAT: 40.429314°
LON: -104.833051°

BOTTOM HOLE:
2806' FNL & 150' FWL
LAT: 40.429922°
LON: -104.867276°

FORMATION:
NIOBRARA

SHEET 3 OF 3