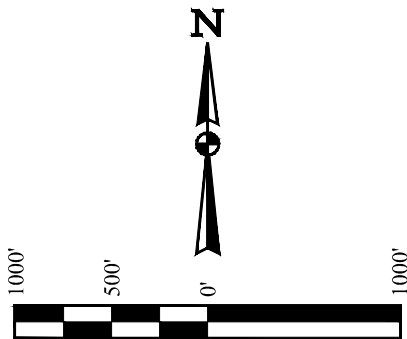


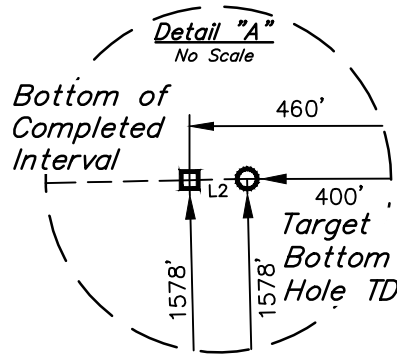
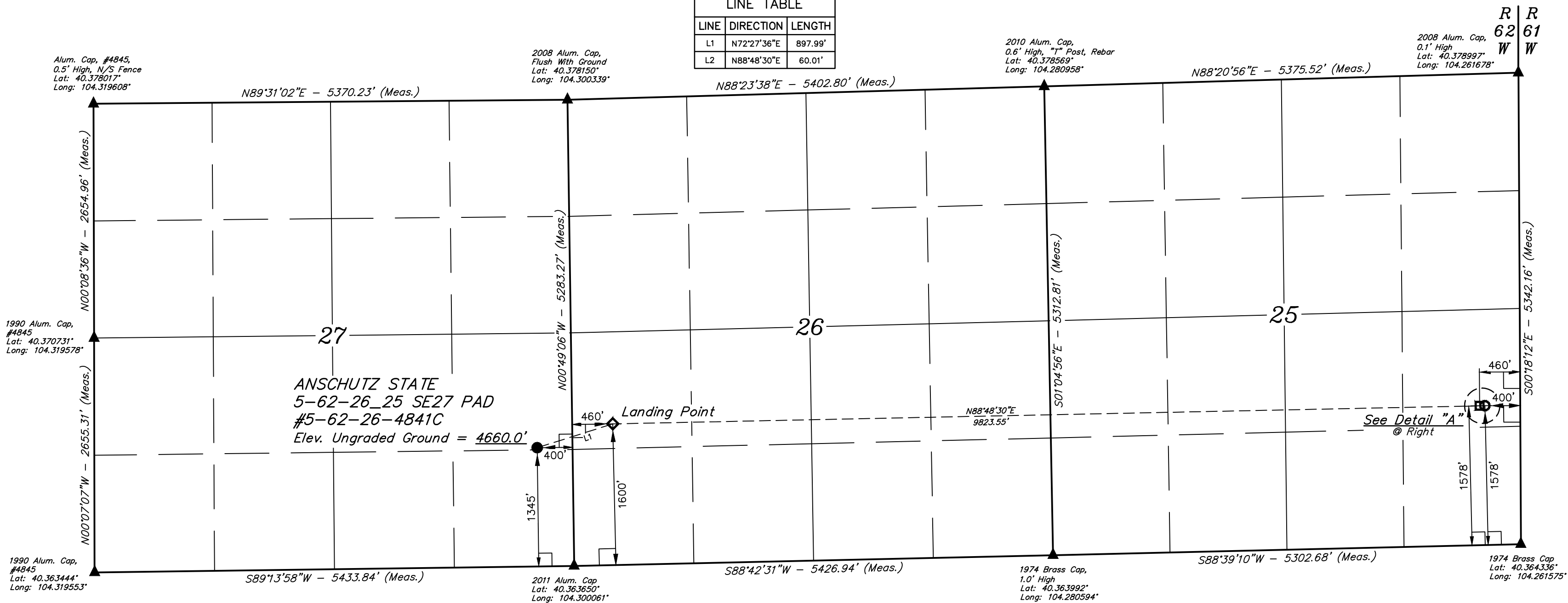
T5N, R62W, 6th P.M.

**BILL BARRETT CORPORATION**  
ANSCHUTZ STATE 5-62-26 25 SE27 PAD #5-62-26-4841C  
NE 1/4 SE 1/4, SECTION 27, T5N, R62W, 6th P.M.  
WELD COUNTY, COLORADO

**BASIS OF BEARINGS**  
BASIS OF BEARINGS IS A G.P.S. OBSERVATION  
**BASIS OF ELEVATION**  
SPOT ELEVATION LOCATED AT THE NORTHEAST CORNER  
OF SECTION 24, T5N, R62W, 6th P.M. TAKEN FROM THE POINT OF  
ROCKS, QUADRANGLE, COLORADO, WELD COUNTY, 7.5 MINUTE  
QUAD (TOPOGRAPHIC MAP) PUBLISHED BY THE UNITED STATES  
DEPARTMENT OF THE INTERIOR, GEOLOGICAL SURVEY. SAID  
ELEVATION IS MARKED AS BEING 4530 FEET.



LINE TABLE		
LINE	DIRECTION	LENGTH
L1	N72°27'36"E	897.99'
L2	N88°48'30"E	60.01'



- LEGEND:**
- = 90° SYMBOL
  - = PROPOSED WELLHEAD.
  - ◆ = LANDING POINT.
  - = BOTTOM OF COMPLETED INTERVAL.
  - = TARGET BOTTOM HOLE TD.
  - ▲ = SECTION CORNERS LOCATED. (NAD 83)

PDOP = 1.8

NAD 83 (SURFACE LOCATION)	NAD 83 (LANDING POINT)	NAD 83 (BTM. OF COMPLETED INT.)	NAD 83 (TARGET BOTTOM HOLE TD)
LATITUDE = 40°22'02.38" (40.367328)	LATITUDE = 40°22'05.06" (40.368072)	LATITUDE = 40°22'07.09" (40.368636)	LATITUDE = 40°22'07.11" (40.368642)
LONGITUDE = 104°18'05.64" (104.301567)	LONGITUDE = 104°17'54.58" (104.298494)	LONGITUDE = 104°17'54.72" (104.298506)	LONGITUDE = 104°17'54.95" (104.298521)
NAD 27 (SURFACE LOCATION)	NAD 27 (LANDING POINT)	NAD 27 (BTM. OF COMPLETED INT.)	NAD 27 (TARGET BOTTOM HOLE TD)
LATITUDE = 40°22'02.44" (40.367344)	LATITUDE = 40°22'05.12" (40.368089)	LATITUDE = 40°22'07.16" (40.368656)	LATITUDE = 40°22'07.17" (40.368658)
LONGITUDE = 104°18'03.81" (104.301058)	LONGITUDE = 104°17'52.75" (104.297986)	LONGITUDE = 104°17'54.90" (104.298506)	LONGITUDE = 104°17'54.12" (104.297533)
STATE PLANE NAD 83 (CO. NORTH)	STATE PLANE NAD 83 (CO. NORTH)	STATE PLANE NAD 83 (CO. NORTH)	STATE PLANE NAD 83 (CO. NORTH)
N: 1378914.39 E: 3333926.97	N: 1379196.88 E: 3334779.13	N: 1379538.21 E: 3344594.19	N: 1379540.30 E: 3344654.14
STATE PLANE NAD 27 (CO. NORTH)	STATE PLANE NAD 27 (CO. NORTH)	STATE PLANE NAD 27 (CO. NORTH)	STATE PLANE NAD 27 (CO. NORTH)
N: 378916.29 E: 2334077.01	N: 379198.77 E: 2334929.17	N: 379540.11 E: 2344744.25	N: 379542.20 E: 2344804.20

CERTIFICATE OF REGISTRATION  
THIS IS TO CERTIFY THAT THE ABOVE DESCRIBED SURVEY WAS MADE IN ACCORDANCE WITH THE RULES AND REGULATIONS OF THE BOARD OF LAND SURVEYORS OF THE STATE OF COLORADO, AND THAT THE SAME ARE TRUE AND CORRECT TO THE BEST OF MY KNOWLEDGE AND BELIEF.  
JARED CHRISTOPHER, Z.B.  
REGISTERED LAND SURVEYOR  
REGISTRATION NO. 28285  
STATE OF COLORADO  
89-005-17

**UINTAH**  
ENGINEERING & LAND SURVEYING

**UELS, LLC**  
Corporate Office \* 85 South 200 East  
Vernal, UT 84078 \* (435) 789-1017

**SURVEYED BY** JARED CHRISTOPHER, Z.B. **04-21-17** **SCALE**  
**DRAWN BY** J.J. **08-24-17** **1" = 1000'**

**WELL LOCATION PLAT**