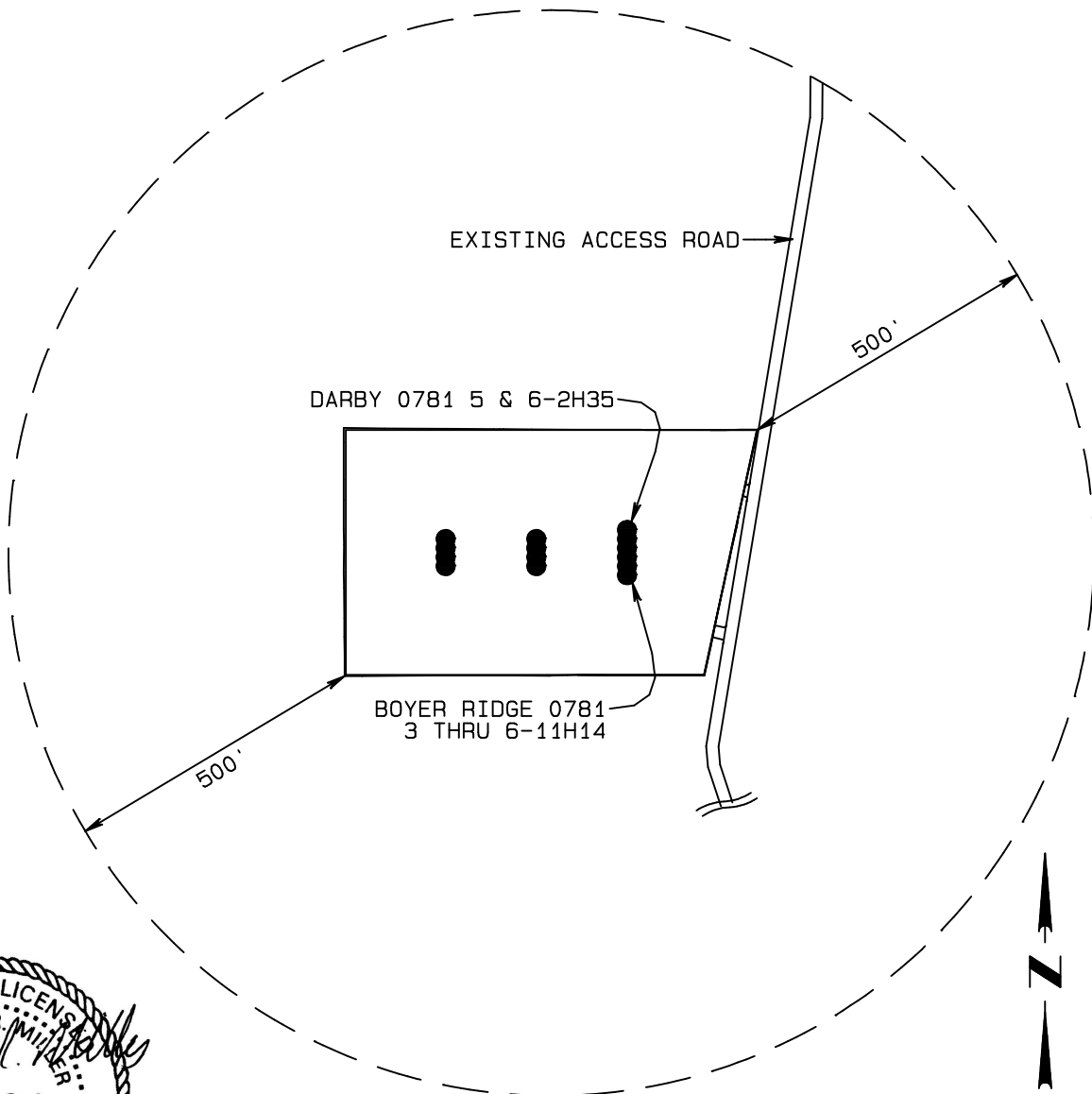


# SandRidge Exploration & Production, LLC

## LOCATION OVERVIEW DRAWING

Grizzly 0781 S11 Pad

NE1/4NW1/4 and NW1/4NE1/4 of Section 11,  
T7N, R81W, 6th P.M., Jackson County, Colorado.



### DISTURBED AREA FOR DRILL PAD

BEFORE RECLAMATION:  
PAD TOTAL = 5.98 Ac

AFTER RECLAMATION:  
PAD TOTAL = 4.74 Ac

CULTURAL FEATURE TABLE FROM PROD FACILITIES		
EXISTING FEATURE	DIRECTION	LENGTH
BUILDING	S 00.07° W	1430'
BUILDING UNIT		+5280'
HIGH OCC. BUILDING UNIT		+5280'
DESIGNATED OUTSIDE AREA		+5280'
PUBLIC ROAD (JCR14)		+5280'
POWER LINE		+5280'
RAILROAD		+5280'
PROPERTY LINE	S0°E	747'

#### CURRENT LAND USE

☐ CROP LAND    ☐ IRRIGATED    ☐ DRY LAND    ☐ IMPROVED PASTURE    ☐ HAY MEADOW    ☐ CRP  
☐ NON-CROP LAND    ☒ RANGELAND    ☐ TIMBER    ☐ RECREATIONAL    ☐ OTHER (Describe) \_\_\_\_\_  
☐ SUBDIVIDED    ☐ INDUSTRIAL    ☐ COMMERCIAL    ☐ RESIDENTIAL

#### FUTURE LAND USE

☐ CROP LAND    ☐ IRRIGATED    ☐ DRY LAND    ☐ IMPROVED PASTURE    ☐ HAY MEADOW    ☐ CRP  
☐ NON-CROP LAND    ☒ RANGELAND    ☐ TIMBER    ☐ RECREATIONAL    ☐ OTHER (Describe) \_\_\_\_\_  
☐ SUBDIVIDED    ☐ INDUSTRIAL    ☐ COMMERCIAL    ☐ RESIDENTIAL

#### PLANT COMMUNITY

☐ DISTURBED GRASSLAND  
☒ NATIVE GRASSLAND  
☐ SHRUB LAND  
☐ PLAINS RIPARIAN  
☐ MOUNTAIN RIPARIAN  
☐ FOREST LAND  
☐ WETLANDS AQUATIC  
☐ ALPINE  
☐ OTHER (Describe): \_\_\_\_\_