

CONSTRUCTION LAYOUT
Grizzly 0781 S11 Pad
NE1/4NW1/4 and NW1/4NE1/4 of Section 11,
T7N, R81W, 6th P.M., Jackson County, Colorado.

-3: 1 CUT SLOPE

C - 3.5'

4+05

680 '

- 0.8' //

180.

180.

10

2+92

405.

165 '

 $1+80$

150

150 '

166.3'

100:

400.

C - 1.9'

0+00

592 '

F - 0.9'

3: 1 FILL SLOPE ✓

Earthwork:
Total Excavation - 11584 Cu. Yd.
Pad Fill/Borrow - 582 Cu. Yd.
Berm Stockpile - 11002 Cu. Yd.
Total Pad = 5.98 acres

GRAPHIC SCALE 1"=50'

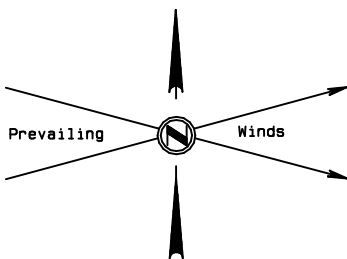
[illegible]

NORTH PARK ENGINEERING & CONSULTING, INC.
PO Box 395 Walden, CO 80480 970-723-3725

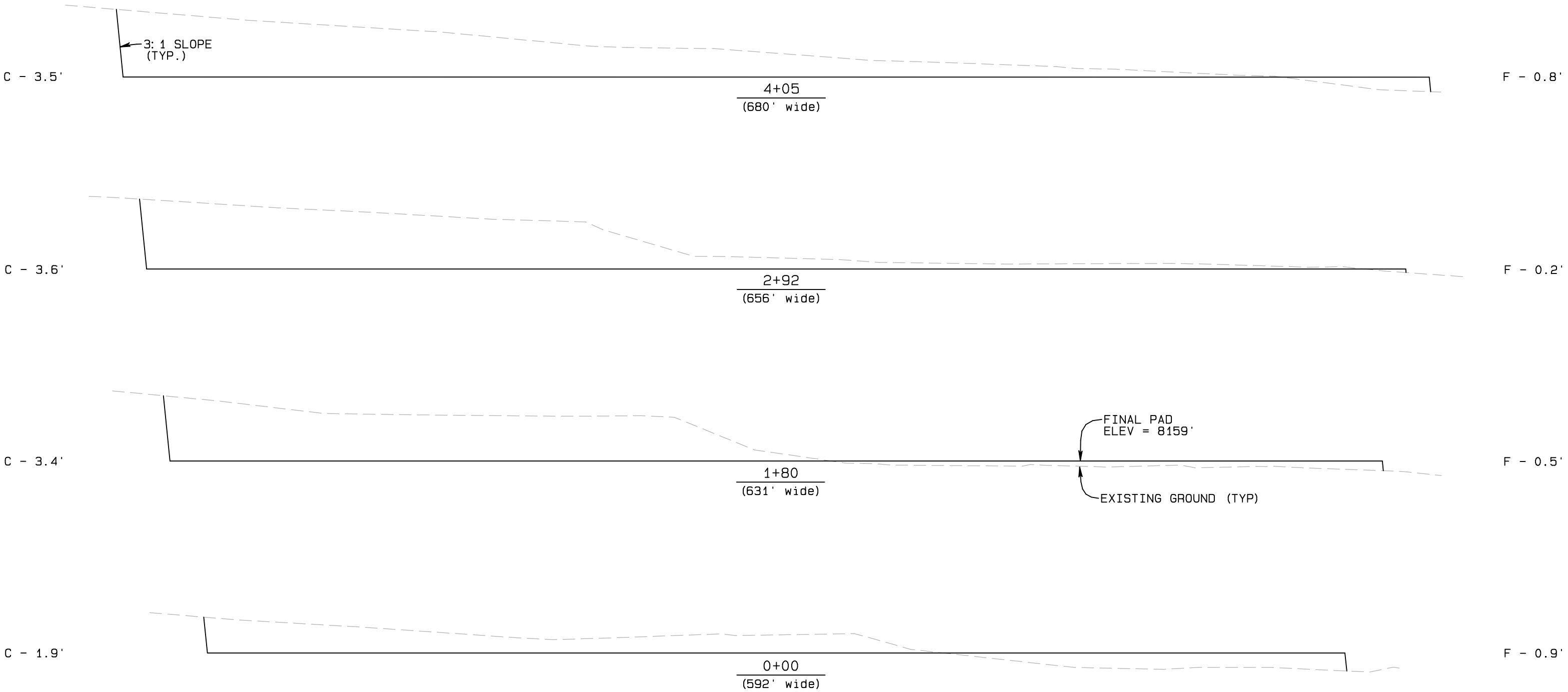
BASIS OF ELEVATION

NAVD88 Computed using GEOID12B as measured
using a combination of Static and Kinematic GPS
based on an OPUS Solution Report.

Final Pad Elevation = 8159'
Elev. for Surface Locations
are at Ungraded Ground



SandRidge Exploration & Production, LLC
CONSTRUCTION LAYOUT CROSS SECTIONS
Grizzly 0781 S11 Pad
NE1/4NW1/4 and NW1/4NE1/4 of Section 11,
T7N, R81W, 6th P.M., Jackson County, Colorado.

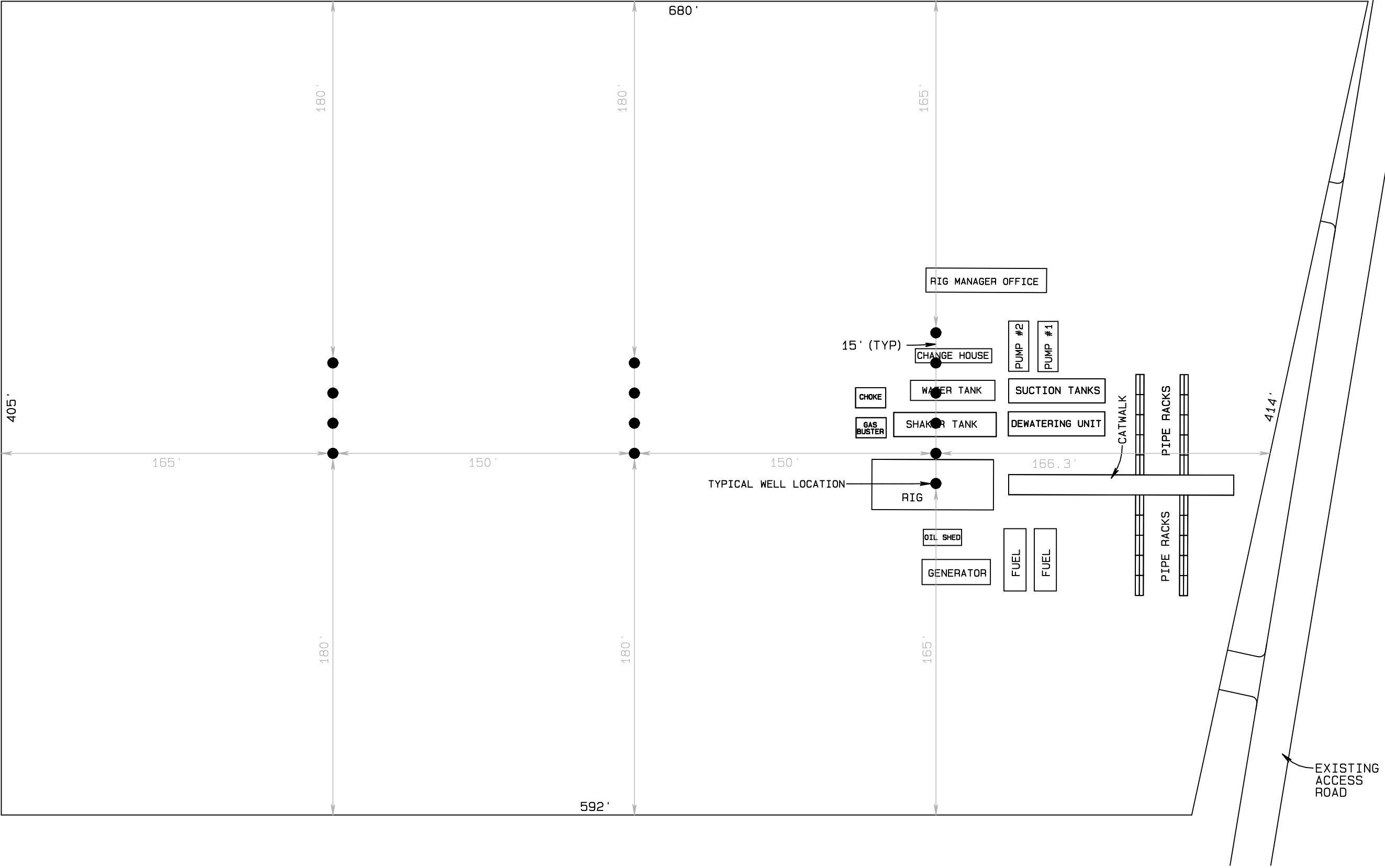
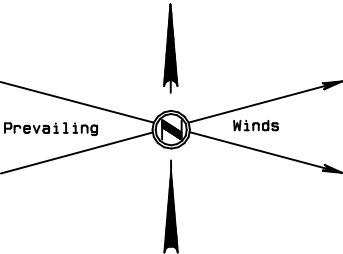


BASIS OF ELEVATION
NAVD88 Computed using GEOID12B as measured
using a combination of Static and Kinematic GPS
based on an OPUS Solution Report.

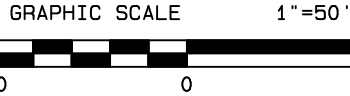


Vertical Exageration = 10 Times
GRAPHIC SCALE 1"=50'
50 0 50
NORTH PARK ENGINEERING & CONSULTING, INC.
PO Box 395 Walden, CO 80480 970-723-3725

SandRidge Exploration & Production, LLC
TYPICAL RIG LAYOUT
Grizzly 0781 S11 Pad
NE1/4NW1/4 and NW1/4NE1/4 of Section 11,
T7N, R81W, 6th P.M., Jackson County, Colorado.

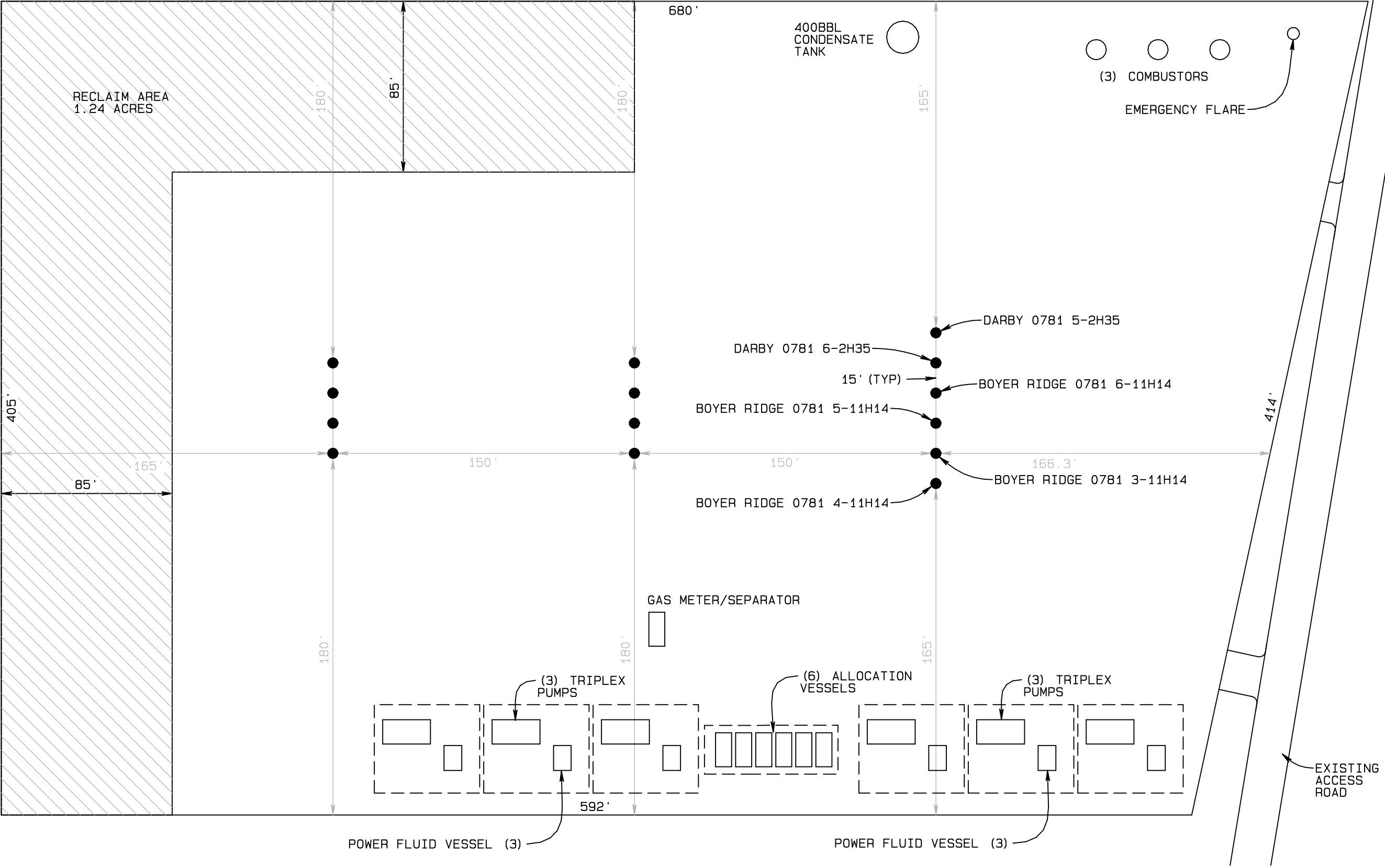
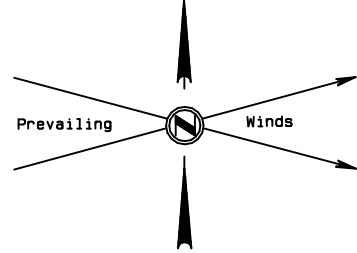


Final Pad Elevation = 8159'



NORTH PARK ENGINEERING & CONSULTING, INC.
PO Box 395 Walden, CO 80480 970-723-3725

SandRidge Exploration & Production, LLC
PRODUCTION FACILITY LAYOUT
Grizzly 0781 S11 Pad
NE1/4NW1/4 and NW1/4NE1/4 of Section 11,
T7N, R81W, 6th P.M., Jackson County, Colorado.



Final Pad Elevation = 8159'