



GAMMA RAY

2" = 100' MD

COMPANY : BILL BARRETT
WELL : ANSCHUTZ EQUUS FARMS 4-62-29-2532CS
FIELD : WATTENBERG
COUNTY : WELD
STATE : COLORADO
COUNTRY : U.S.A.
UWI : 05-123-42732

COMPANY : BILL BARRETT

WELL : ANSCHUTZ EQUUS FARMS 4-62-29-2532CS

FIELD : WATTENBERG

COUNTY : WELD

STATE : COLORADO

COUNTRY : U.S.A.

UWI : 05-123-42732

WELL LOCATION NAD83
LAT:40°16'53.670"N LONG:104°20'14.660"W
N:1347545.31 ft E:3324350.92 ft

SEC:28 TWP:4N RANGE:62W

OTHER SERVICES

DIRECTIONAL
ROP

DEPTH REF. : RKB

REF. HEIGHT : 20.000 ft RKB to Ground Level

GROUND LEVEL : 4624.300 ft G.L. to MEAN SEA LEVEL

BOREHOLE RECORD

DEVIATION RECORD

HOLE SIZE in	FROM ft	TO ft	INCLINATION deg	FROM ft	TO ft
12.25	0	815	0 - 1	0	815
8.75	815	6699	1 -18	815	2249
6.125	6699	16373	18 - 0	2249	5724
			0 - 90	5724	6639
			90 +/- 3	6639	16373

CASING RECORD

CASING SIZE in	FROM ft	TO ft	DRILLING CO. : SAVANNA RIG : 802 LWD UNIT NO. : KIT MUD PUDISTRICT : CASPER SPUD DATE : 8/12/2017 LWD START DATE : 9/4/2017 DEPTH : 815 ft LWD END DATE : 9/08/2017 DEPTH : 16373 ft TOTAL DEPTH : 16373 ft		
9.625	0	800			
7	800	6620			

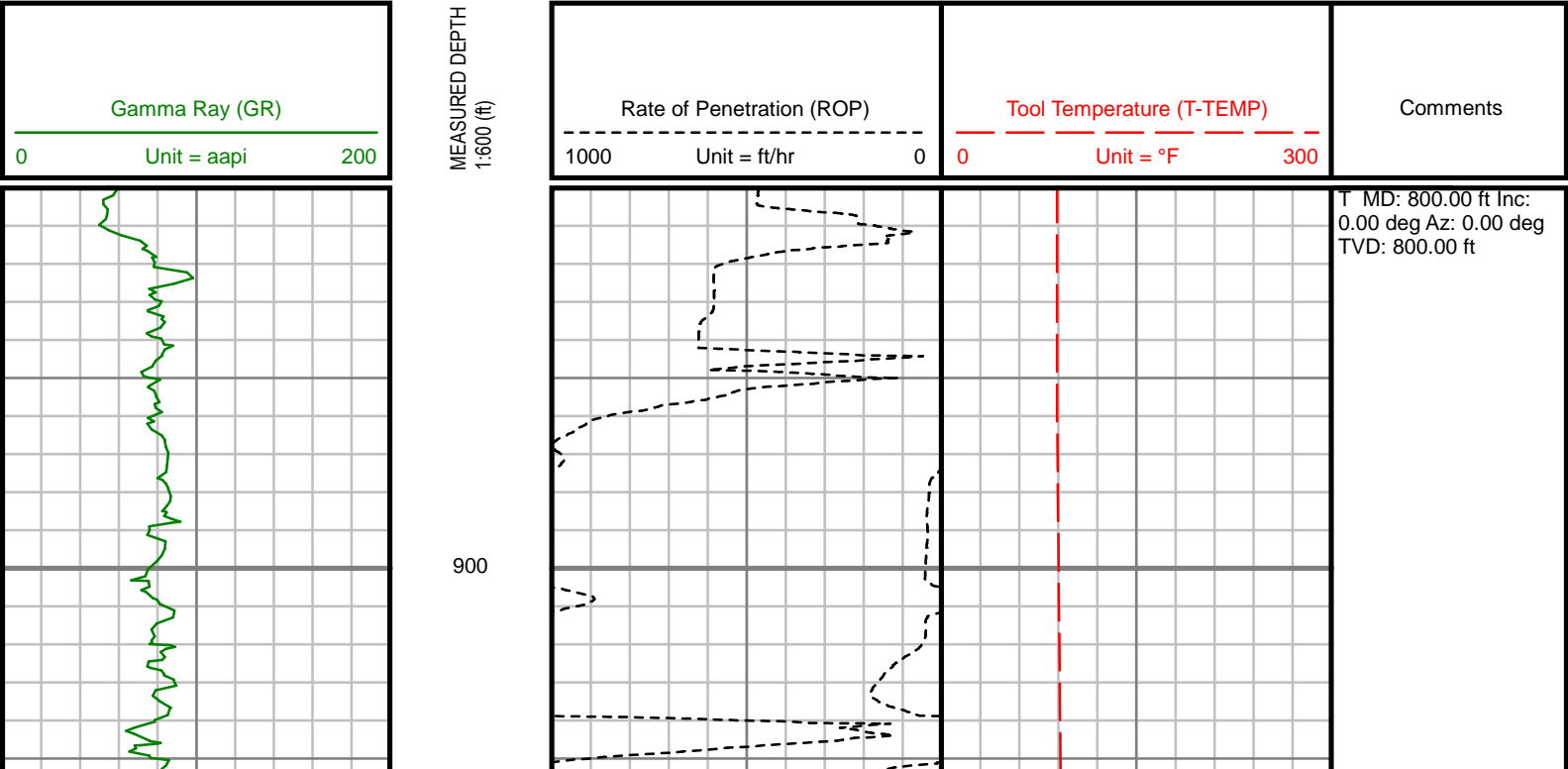
Run Data

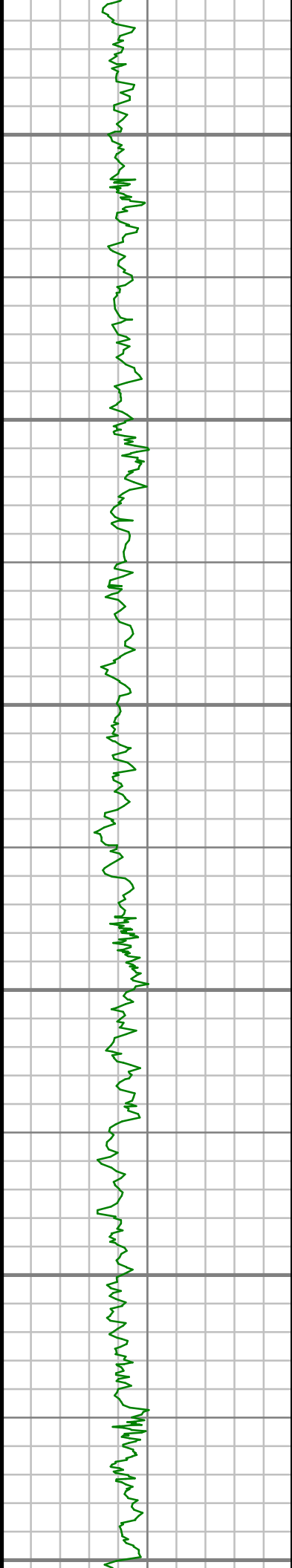
RUN NUMBER	1	2		
START DATE	9/04/2017	9/05/2017		
START TIME	03:30	20:30		
END DATE	9/5/2017	9/8/2017		
END TIME	08:00	22:35		
DEPTH IN (ft)	815	6699		
DEPTH OUT (ft)	6699	16373		
LOG TOP (ft)	815	6639		
LOG BOTTOM (ft)	6639	16373		
HOLE SIZE (in)	8.75	6.125		
MUD DATA @ (ft)	6699	15909		
MUD TYPE	WATER BASED	WATER BASED		
DENSITY (lb / gal)	10.5	9.15		
VISCOSITY (s / qt)	44	30		
pH	7.5	8.4		
FLUID LOSS (cm ³ / 30)	-	-		
SALINITY (ppm)	400	400		
Rm (ohmm @ deg F)	-	-		
Rmf (ohmm @ deg F)	-	-		
MAX TEMP (deg F)	180	238		
Rm @ MAX TEMP (ohmm)	-	-		
LWD ENGINEER #1	R. WARD	R. WARD		
LWD ENGINEER #2	J. PARISEE	J. PARISEE		
LWD ENGINEER #3	-	-		
LOG WITNESS #1	D. MOORE	D. MOORE		
LOG WITNESS #2	-	-		

Remarks
BILL BARRETT CORP. AFE# 19790D
SCIENTIFIC DRILLING INTERNATIONAL JOB# OP.004077
ALL REFERENCES IN THE DEPTH TRACK ARE AT BIT DEPTH.
ALL DATA IS MEMORY DATA UNLESS STATED OTHERWISE.
FLAT AVERAGE FILTER OF 1.00 FT APPLIED TO RATE OF PENETRATION CURVE
FLAT AVERAGE FILTER OF 1.00 FT APPLIED TO TOOL TEMPERATURE CURVE
RUN #1: MWD / GAMMA RAY LOGGING RUN
SENSORS S/N: PULSER 128-248 / CONT = 949 / MWD EYE = 1483 / GAMMA RAY = 1422
BIT TO SENSOR OFFSETS: SURVEY = 58.62 FT. / GAMMA RAY = 54.62 FT.
RUN #2: MWD / GAMMA RAY LOGGING RUN
SENSORS S/N: PULSER 78-114 / CONT = 929 / MWD EYE = 1483 / GAMMA RAY = 1478
BIT TO SENSOR OFFSETS: SURVEY = 55.00 FT. / GAMMA RAY = 51.00 FT.
MNEMONICS LIST:
GR = GAMMA RAY
ROP = RATE OF PENETRATION
T-TEMP = TOOL TEMPERATURE

All interpretations are opinions based on inferences from electrical or other measurements and we cannot, and do not guarantee the accuracy or correctness of any interpretations, and we shall not, except in the case of gross or willful negligence on our part, be liable or responsible for any loss, costs, damages or expenses incurred or sustained by anyone resulting from any interpretation made by any of our officers, agents or employees. These interpretations are also subject to our general terms and conditions as set out in our current price schedule.

BILL BARRETT CORP.
ANSCHUTZ EQUUS FARMS 4-62-29-2532CS
WATTENBERG FIELD
WELD COUNTY, COLORADO
05-123-42732





1000

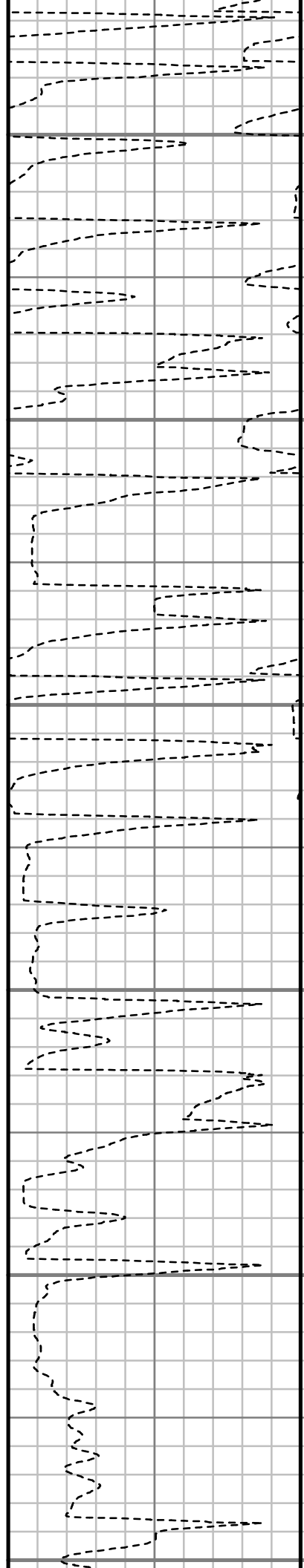
1100

1200

1300

1400

1500



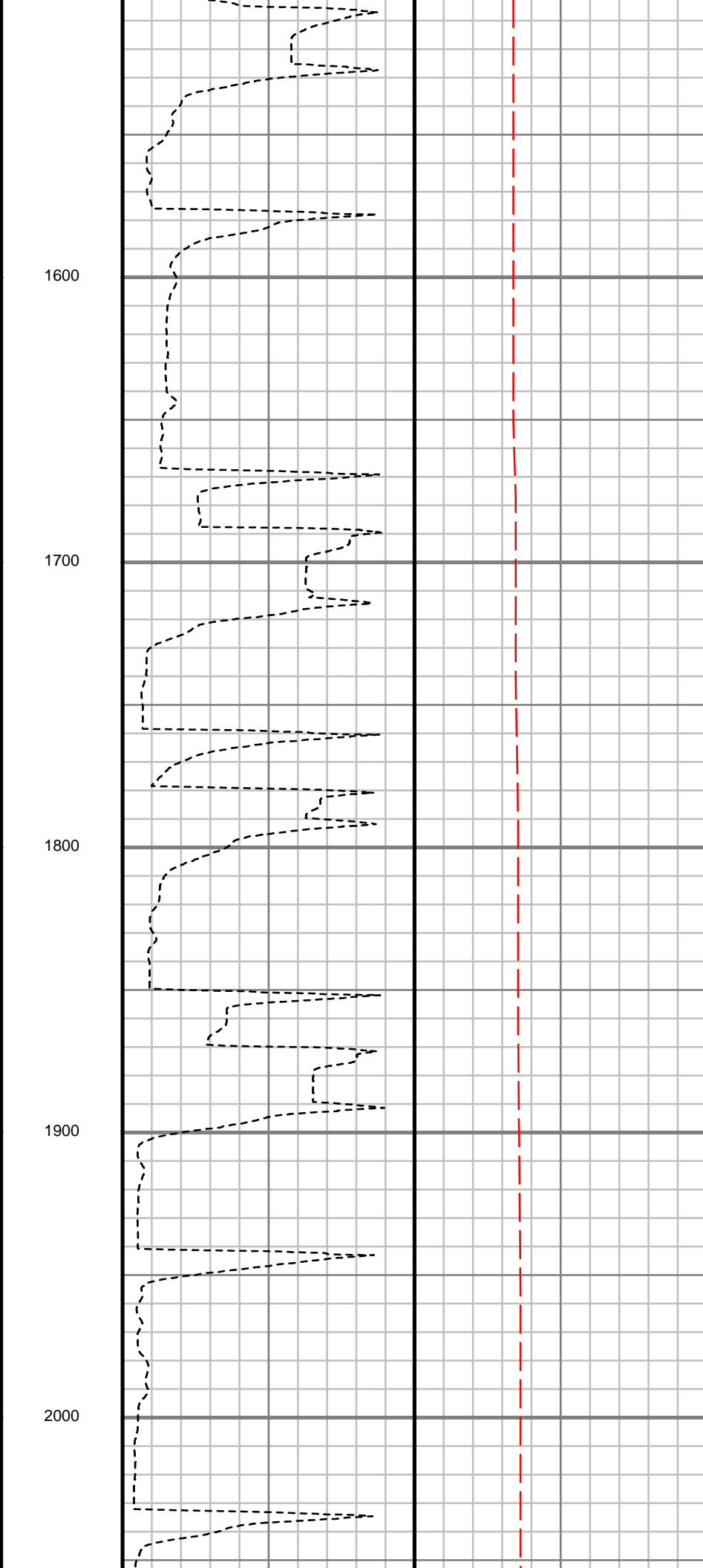
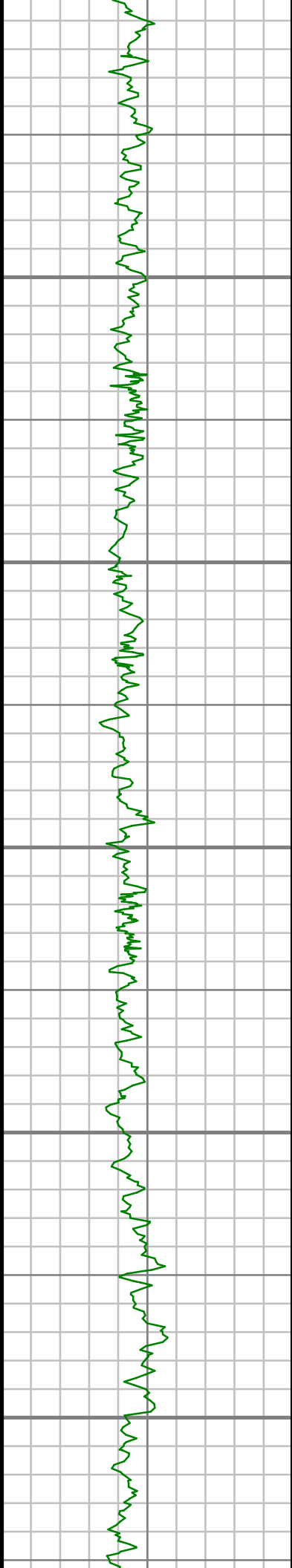
S: 1 MD: 1063.00 ft
Inc: 0.71 deg Az:
289.63 deg TVD:
1062.99 ft

S: 2 MD: 1154.00 ft
Inc: 2.96 deg Az:
322.03 deg TVD:
1153.94 ft

S: 3 MD: 1245.00 ft
Inc: 3.67 deg Az:
323.80 deg TVD:
1244.79 ft

S: 4 MD: 1336.00 ft
Inc: 6.15 deg Az:
329.13 deg TVD:
1335.45 ft

S: 5 MD: 1427.00 ft
Inc: 7.27 deg Az:
330.97 deg TVD:
1425.82 ft



S: 6 MD: 1519.00 ft
Inc: 9.41 deg Az:
333.85 deg TVD:
1516.85 ft

S: 7 MD: 1611.00 ft
Inc: 9.14 deg Az:
326.75 deg TVD:
1607.65 ft

S: 8 MD: 1702.00 ft
Inc: 11.87 deg Az:
331.08 deg TVD:
1697.12 ft

S: 9 MD: 1793.00 ft
Inc: 15.05 deg Az:
332.15 deg TVD:
1785.61 ft

S: 10 MD: 1885.00 ft
Inc: 17.28 deg Az:
335.18 deg TVD:
1873.97 ft

S: 11 MD: 1975.00 ft
Inc: 17.55 deg Az:
332.05 deg TVD:
1959.84 ft



2100

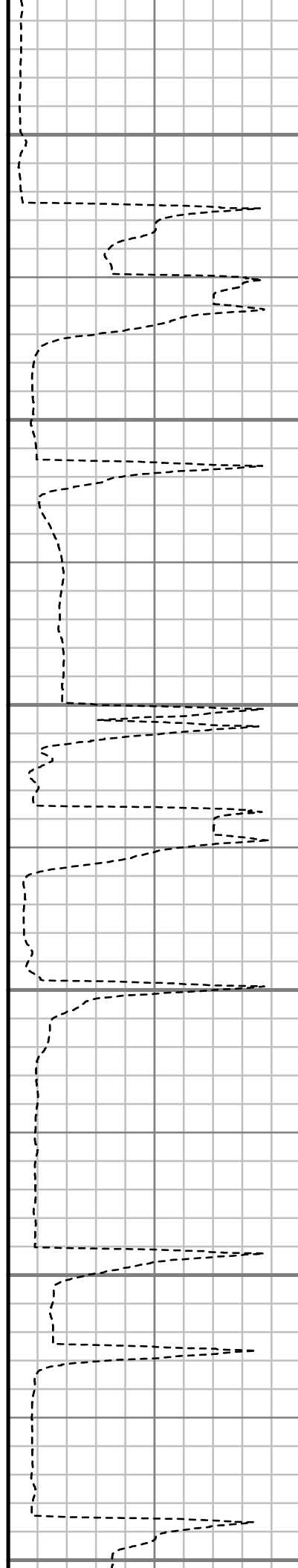
2200

2300

2400

2500

2600



S: 12 MD: 2067.00 ft
Inc: 16.70 deg Az:
330.41 deg TVD:
2047.76 ft

S: 13 MD: 2158.00 ft
Inc: 17.72 deg Az:
334.47 deg TVD:
2134.69 ft

S: 14 MD: 2249.00 ft
Inc: 17.55 deg Az:
333.39 deg TVD:
2221.41 ft

S: 15 MD: 2341.00 ft
Inc: 16.89 deg Az:
336.63 deg TVD:
2309.29 ft

S: 16 MD: 2436.00 ft
Inc: 16.81 deg Az:
337.69 deg TVD:
2400.21 ft

S: 17 MD: 2530.00 ft
Inc: 16.24 deg Az:
336.80 deg TVD:
2490.33 ft



2700

2800

2900

3000

3100



S: 18 MD: 2625.00 ft
Inc: 15.17 deg Az:
339.13 deg TVD:
2581.78 ft

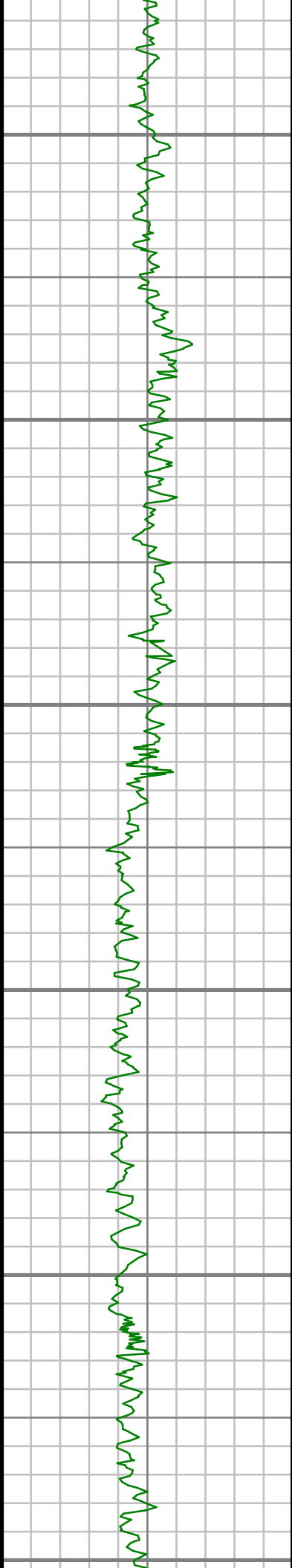
S: 19 MD: 2718.00 ft
Inc: 15.13 deg Az:
338.77 deg TVD:
2671.55 ft

S: 20 MD: 2812.00 ft
Inc: 12.91 deg Az:
344.74 deg TVD:
2762.75 ft

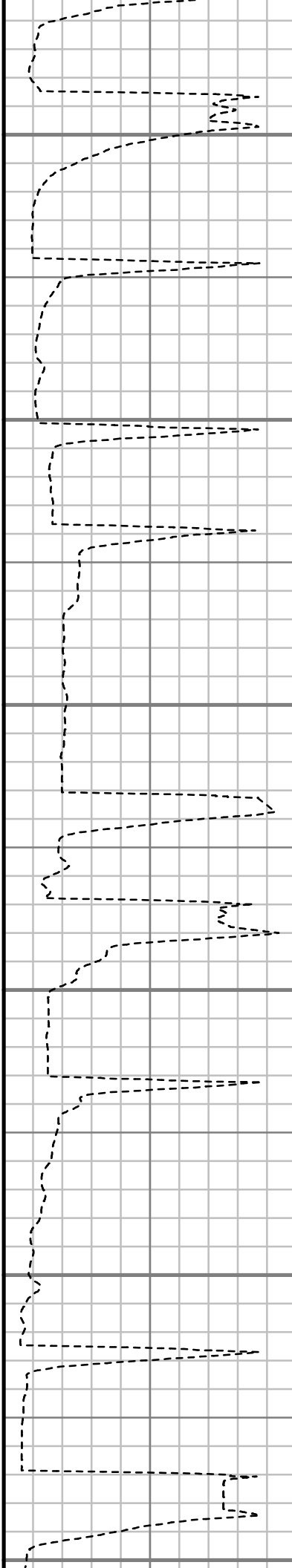
S: 21 MD: 2906.00 ft
Inc: 10.86 deg Az:
347.48 deg TVD:
2854.73 ft

S: 22 MD: 3000.00 ft
Inc: 9.68 deg Az:
349.96 deg TVD:
2947.22 ft

S: 23 MD: 3094.00 ft
Inc: 9.03 deg Az:
349.29 deg TVD:
3039.97 ft



3200



3300

3400

3500

3600

3700

S: 24 MD: 3188.00 ft
Inc: 8.02 deg Az:
350.34 deg TVD:
3132.93 ft

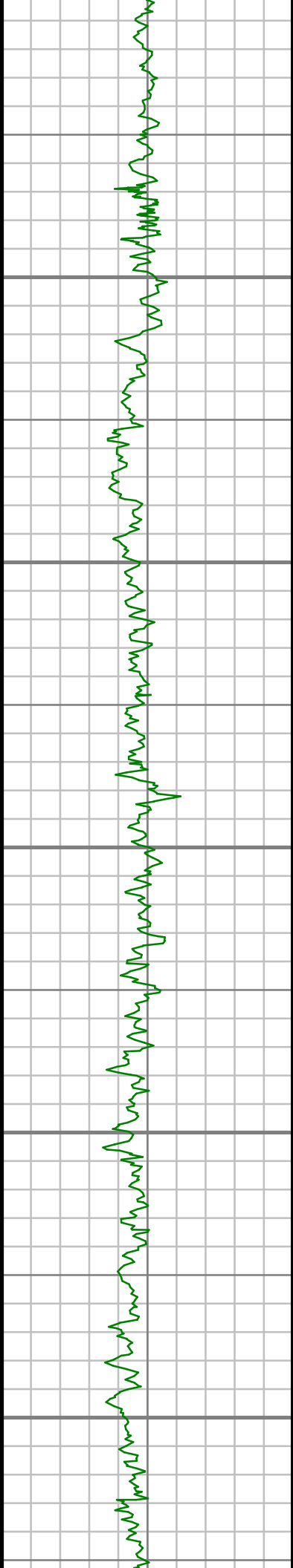
S: 25 MD: 3283.00 ft
Inc: 6.76 deg Az:
354.59 deg TVD:
3227.14 ft

S: 26 MD: 3377.00 ft
Inc: 6.69 deg Az:
355.11 deg TVD:
3320.49 ft

S: 27 MD: 3471.00 ft
Inc: 5.17 deg Az:
351.98 deg TVD:
3413.99 ft

S: 28 MD: 3565.00 ft
Inc: 4.97 deg Az:
356.07 deg TVD:
3507.62 ft

S: 29 MD: 3660.00 ft
Inc: 4.75 deg Az:
355.10 deg TVD:
3602.28 ft



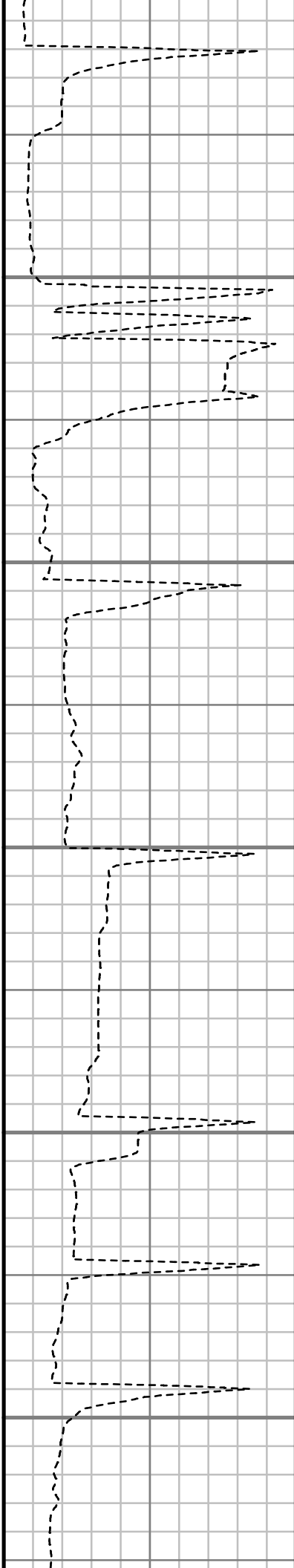
3800

3900

4000

4100

4200



S: 30 MD: 3754.00 ft
Inc: 2.99 deg Az:
348.61 deg TVD:
3696.06 ft

S: 31 MD: 3848.00 ft
Inc: 0.51 deg Az: 4.29
deg TVD: 3790.01 ft

S: 32 MD: 3941.00 ft
Inc: 0.23 deg Az: 93.13
deg TVD: 3883.01 ft

S: 33 MD: 4035.00 ft
Inc: 0.66 deg Az:
149.78 deg TVD:
3977.00 ft

S: 34 MD: 4129.00 ft
Inc: 0.57 deg Az:
169.40 deg TVD:
4071.00 ft

S: 35 MD: 4223.00 ft
Inc: 0.17 deg Az:
145.50 deg TVD:
4165.00 ft



4300

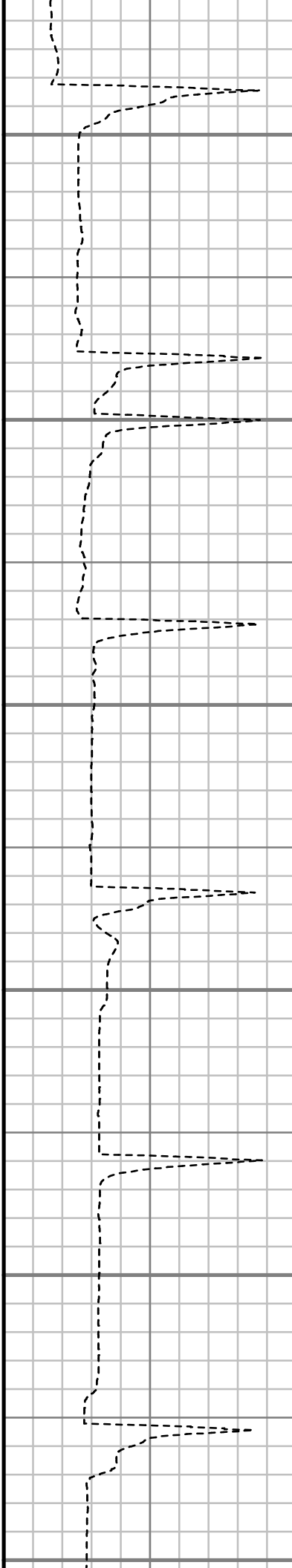
4400

4500

4600

4700

4800



S: 36 MD: 4316.00 ft
Inc: 0.18 deg Az:
136.79 deg TVD:
4258.00 ft

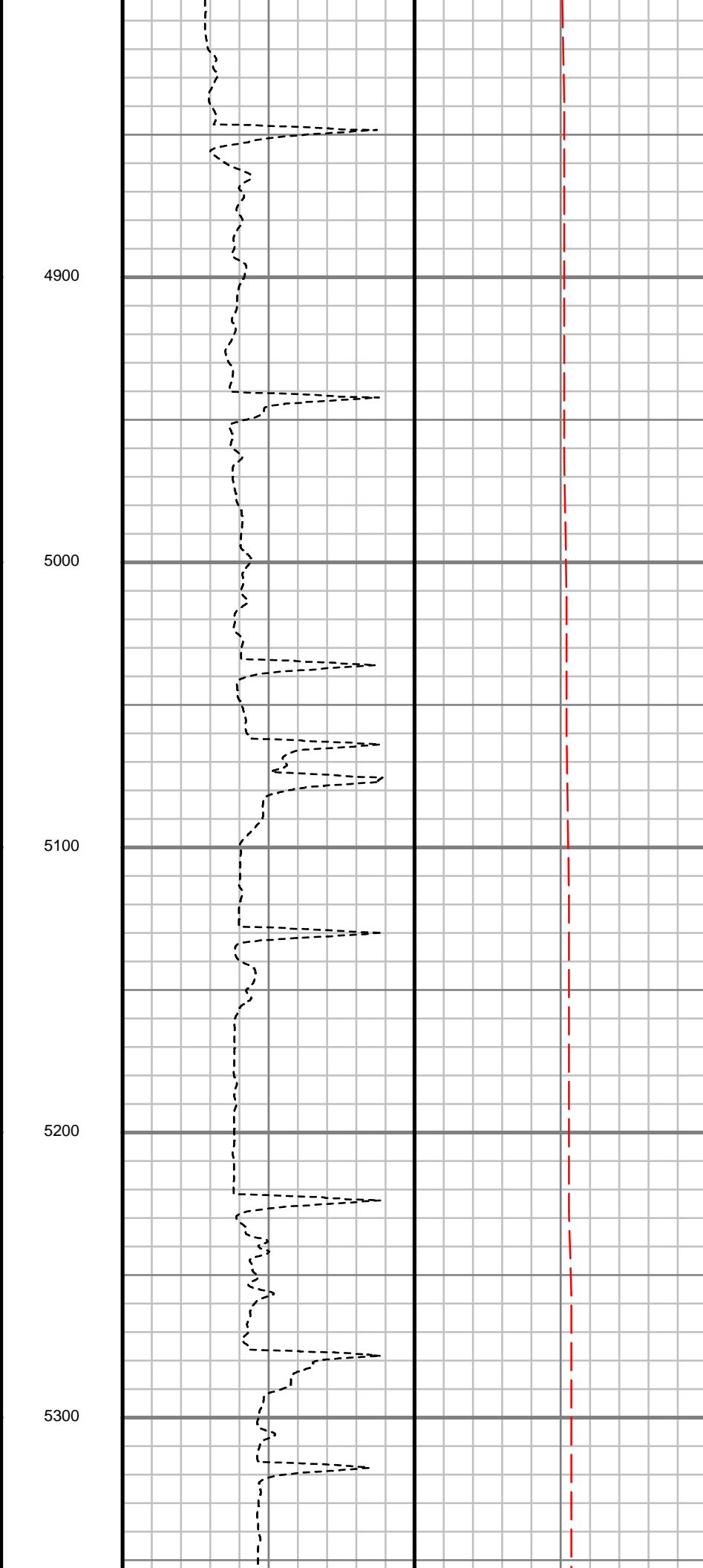
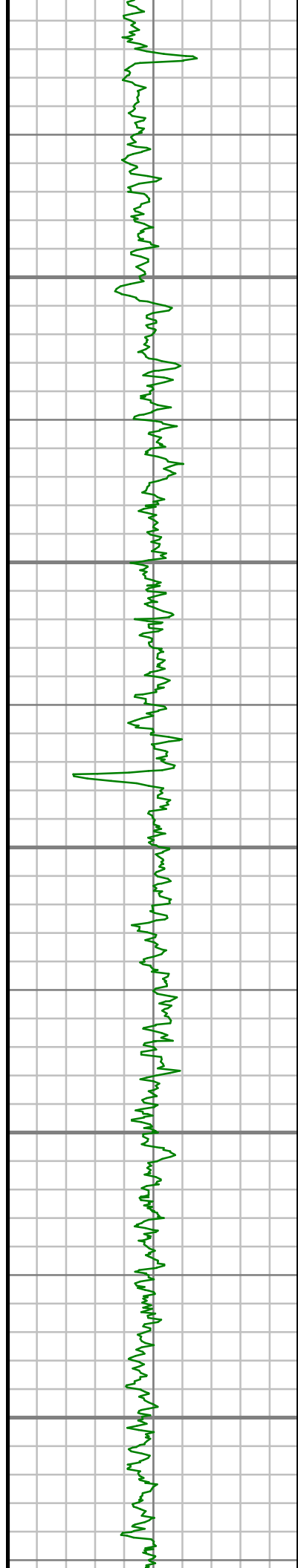
S: 37 MD: 4409.00 ft
Inc: 0.17 deg Az:
225.70 deg TVD:
4351.00 ft

S: 38 MD: 4503.00 ft
Inc: 0.51 deg Az:
277.58 deg TVD:
4444.99 ft

S: 39 MD: 4598.00 ft
Inc: 0.59 deg Az:
265.66 deg TVD:
4539.99 ft

S: 40 MD: 4692.00 ft
Inc: 0.64 deg Az:
252.54 deg TVD:
4633.99 ft

S: 41 MD: 4786.00 ft
Inc: 0.50 deg Az:
239.63 deg TVD:



4727.98 ft
S: 42 MD: 4880.00 ft Inc: 0.43 deg Az: 233.94 deg TVD: 4821.98 ft
S: 43 MD: 4974.00 ft Inc: 0.50 deg Az: 243.36 deg TVD: 4915.97 ft
S: 44 MD: 5068.00 ft Inc: 0.13 deg Az: 331.26 deg TVD: 5009.97 ft
S: 45 MD: 5161.00 ft Inc: 0.13 deg Az: 197.12 deg TVD: 5102.97 ft
S: 46 MD: 5255.00 ft Inc: 0.11 deg Az: 158.39 deg TVD: 5196.97 ft
S: 47 MD: 5349.00 ft



5400

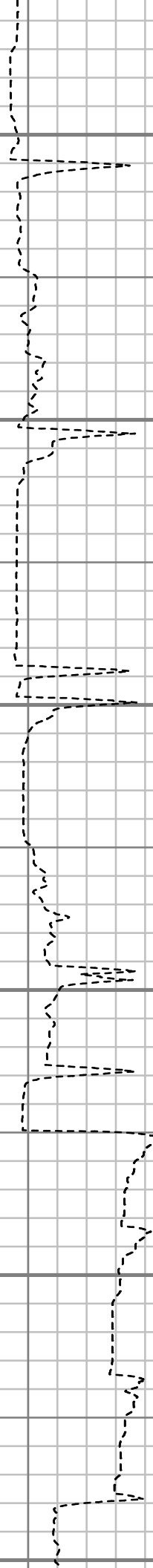
5500

5600

5700

5800

5900



S: 47 MD: 5543.00 ft
Inc: 0.15 deg Az: 74.32
deg TVD: 5290.97 ft

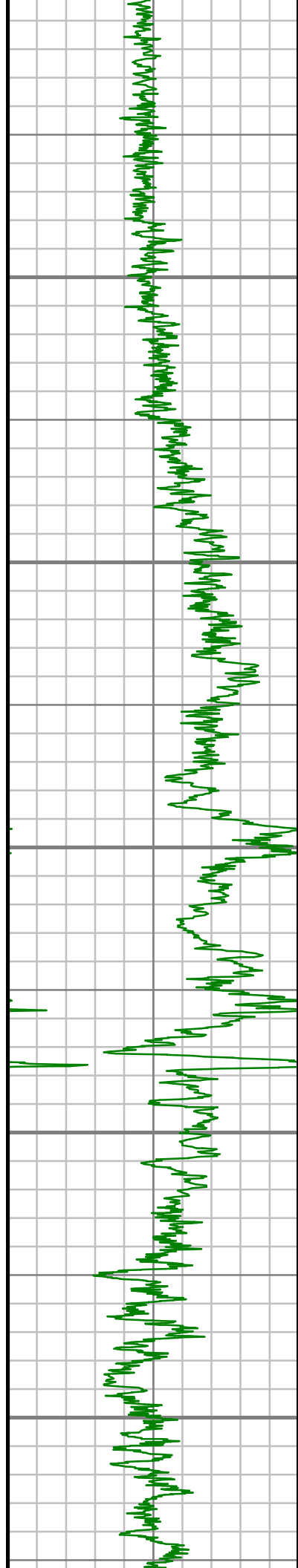
S: 48 MD: 5443.00 ft
Inc: 0.42 deg Az: 68.56
deg TVD: 5384.97 ft

S: 49 MD: 5537.00 ft
Inc: 0.34 deg Az: 66.98
deg TVD: 5478.97 ft

S: 50 MD: 5630.00 ft
Inc: 0.45 deg Az: 57.92
deg TVD: 5571.97 ft

S: 51 MD: 5724.00 ft
Inc: 0.89 deg Az: 66.39
deg TVD: 5665.96 ft

S: 52 MD: 5818.00 ft
Inc: 11.17 deg Az:
278.49 deg TVD:
5759.40 ft



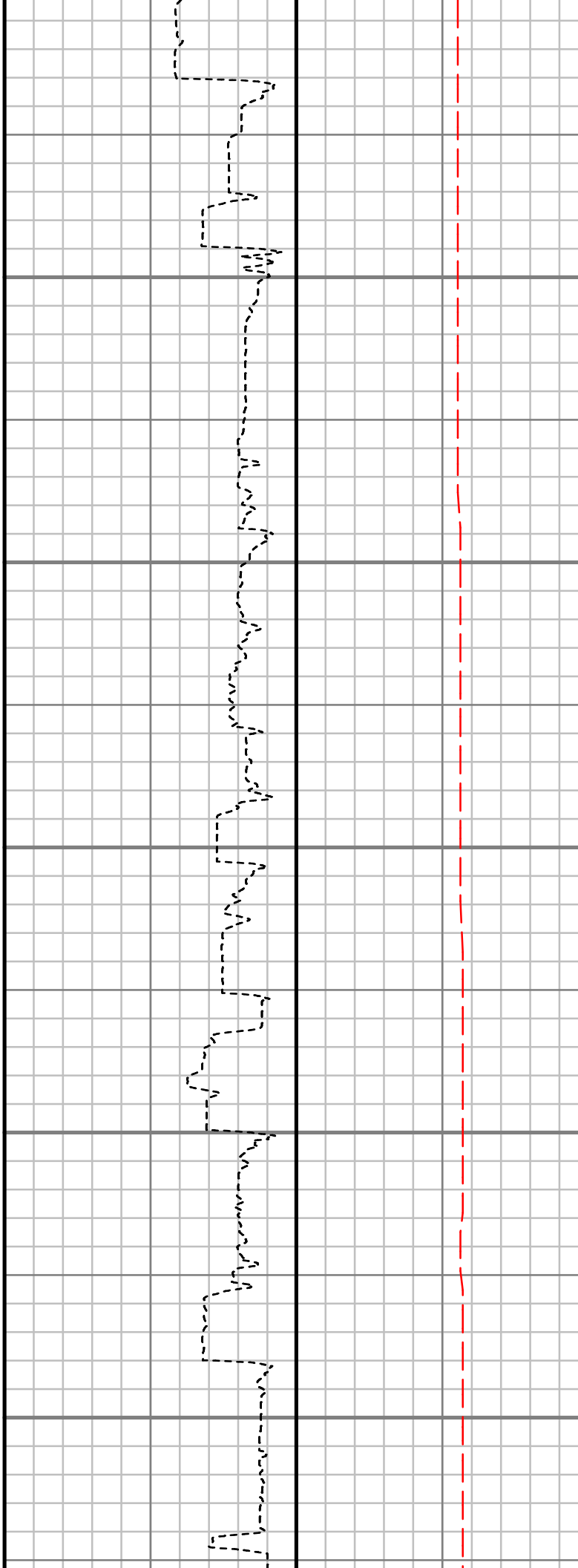
6000

6100

6200

6300

6400



S: 53 MD: 5912.00 ft
Inc: 18.00 deg Az:
284.18 deg TVD:
5850.32 ft

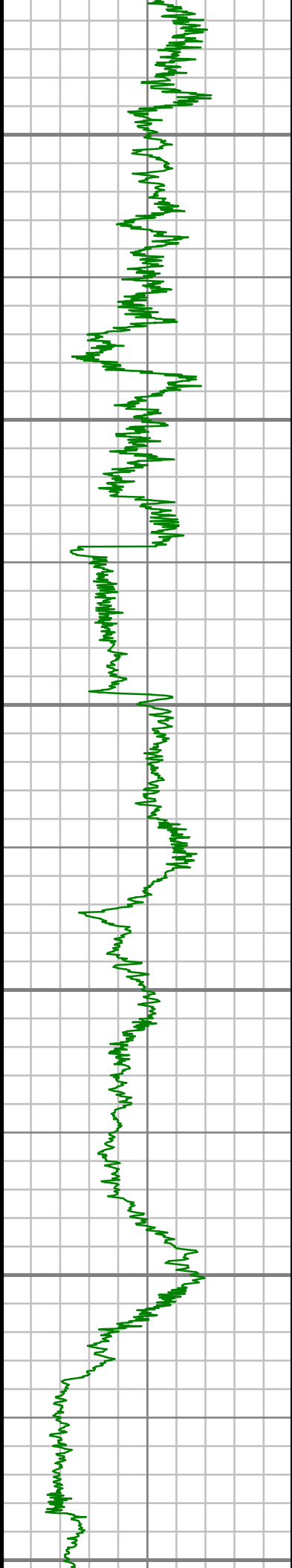
S: 54 MD: 6005.00 ft
Inc: 24.18 deg Az:
277.22 deg TVD:
5937.07 ft

S: 55 MD: 6099.00 ft
Inc: 34.61 deg Az:
274.00 deg TVD:
6018.85 ft

S: 56 MD: 6193.00 ft
Inc: 44.26 deg Az:
273.90 deg TVD:
6091.37 ft

S: 57 MD: 6287.00 ft
Inc: 48.49 deg Az:
266.45 deg TVD:
6156.25 ft

S: 58 MD: 6381.00 ft
Inc: 55.02 deg Az:
268.22 deg TVD:
6214.41 ft



6500

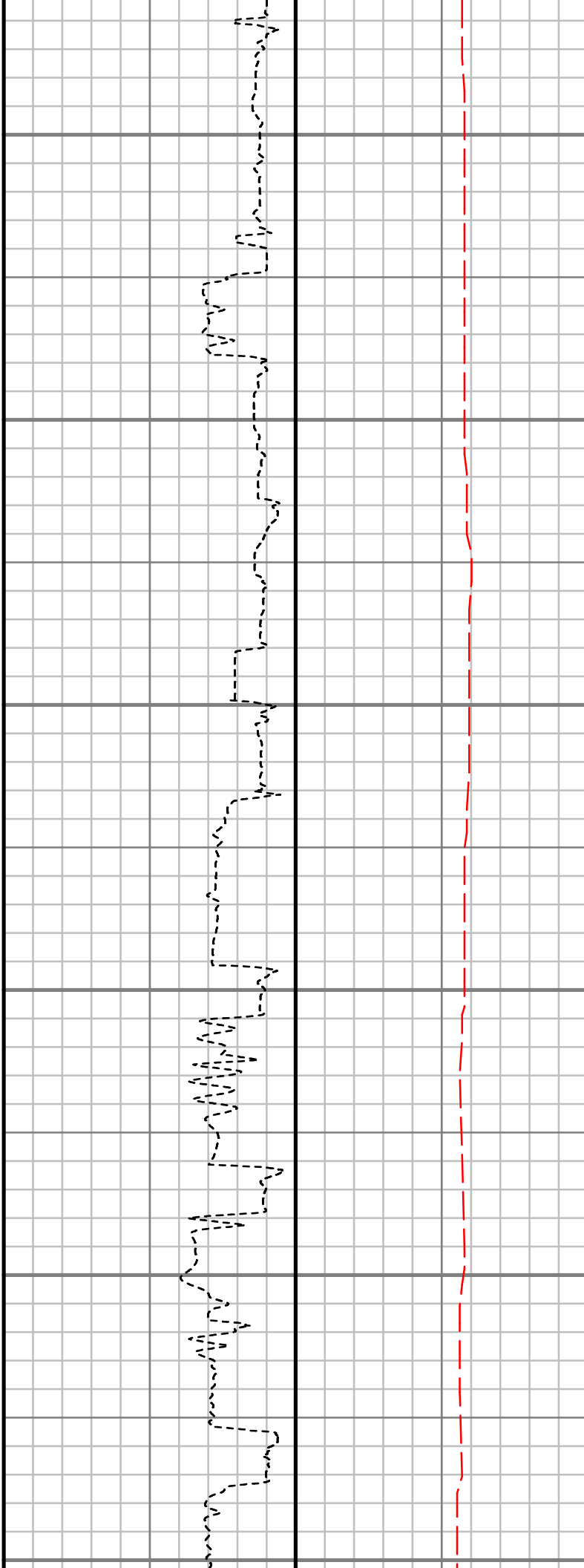
6600

6700

6800

6900

7000



S: 59 MD: 6475.00 ft
Inc: 66.29 deg Az:
267.47 deg TVD:
6260.40 ft

S: 60 MD: 6569.00 ft
Inc: 75.90 deg Az:
261.76 deg TVD:
6290.85 ft

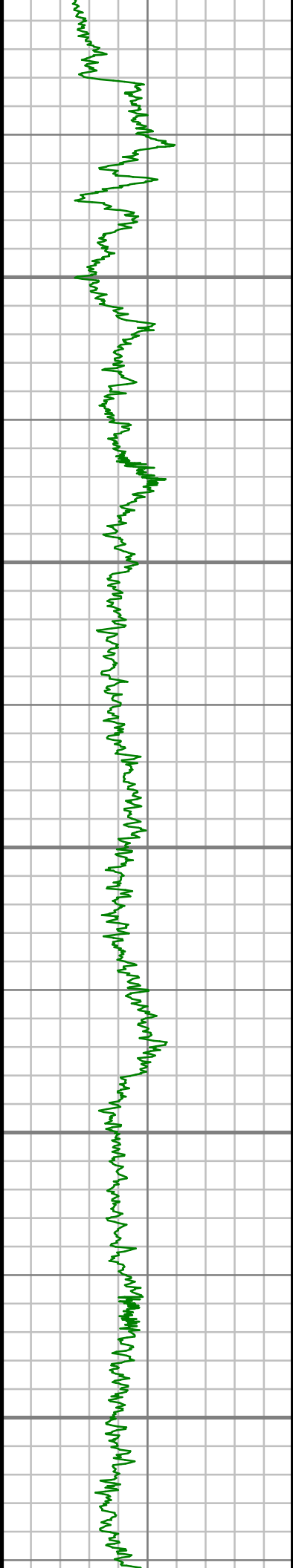
S: 61 MD: 6639.00 ft
Inc: 87.02 deg Az:
260.70 deg TVD:
6301.23 ft

S: 62 MD: 6736.00 ft
Inc: 91.11 deg Az:
264.09 deg TVD:
6302.82 ft

S: 63 MD: 6768.00 ft
Inc: 91.21 deg Az:
264.29 deg TVD:
6302.17 ft

S: 64 MD: 6862.00 ft
Inc: 90.67 deg Az:
266.56 deg TVD:
6300.63 ft

S: 65 MD: 6956.00 ft
Inc: 90.40 deg Az:
268.76 deg TVD:
6299.75 ft



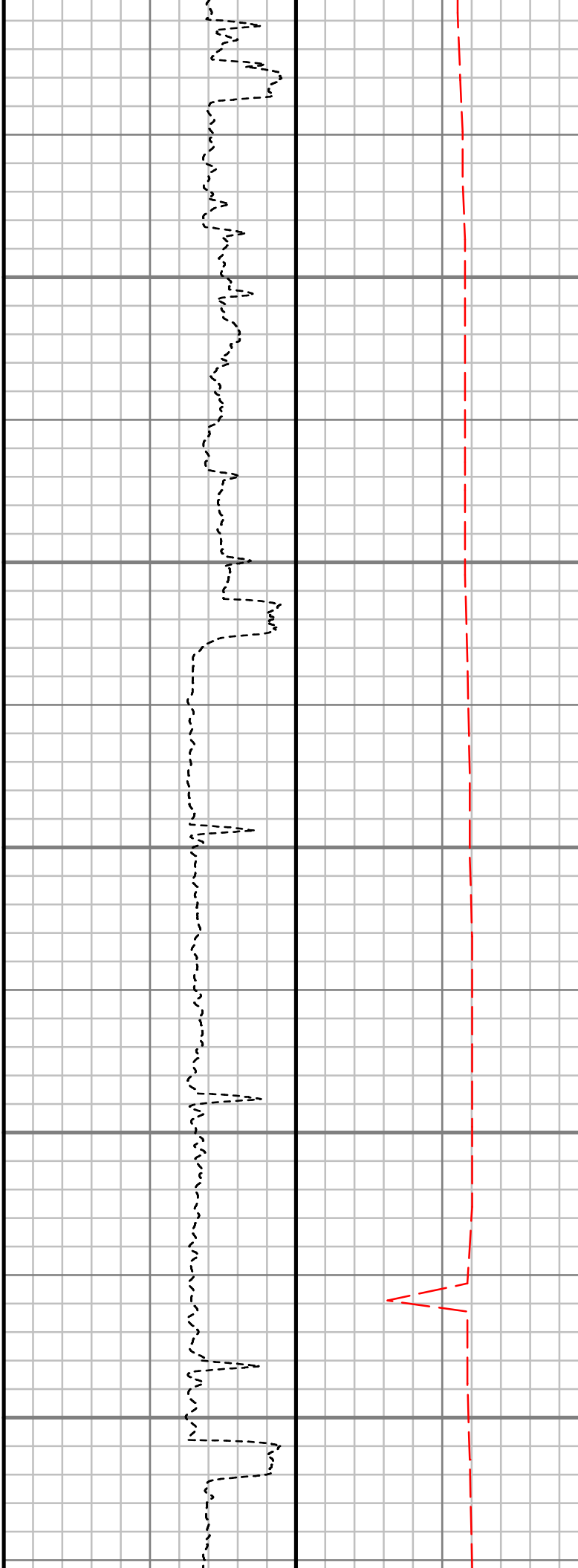
7100

7200

7300

7400

7500



S: 66 MD: 7050.00 ft
Inc: 88.86 deg Az:
270.94 deg TVD:
6300.35 ft

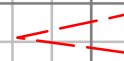
S: 67 MD: 7143.00 ft
Inc: 89.33 deg Az:
270.94 deg TVD:
6301.82 ft

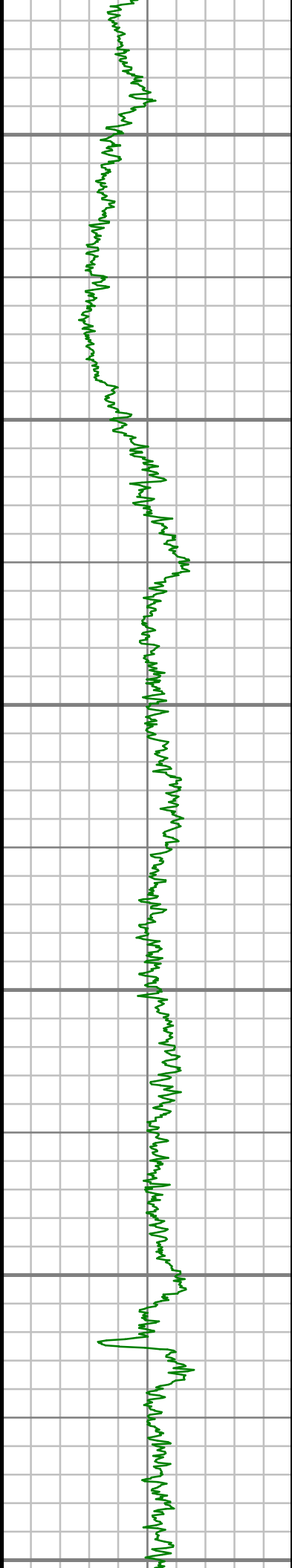
S: 68 MD: 7237.00 ft
Inc: 88.49 deg Az:
271.38 deg TVD:
6303.61 ft

S: 69 MD: 7331.00 ft
Inc: 87.85 deg Az:
271.42 deg TVD:
6306.61 ft

S: 70 MD: 7425.00 ft
Inc: 89.43 deg Az:
273.22 deg TVD:
6308.84 ft

S: 71 MD: 7518.00 ft
Inc: 88.32 deg Az:
271.16 deg TVD:
6310.67 ft





7600

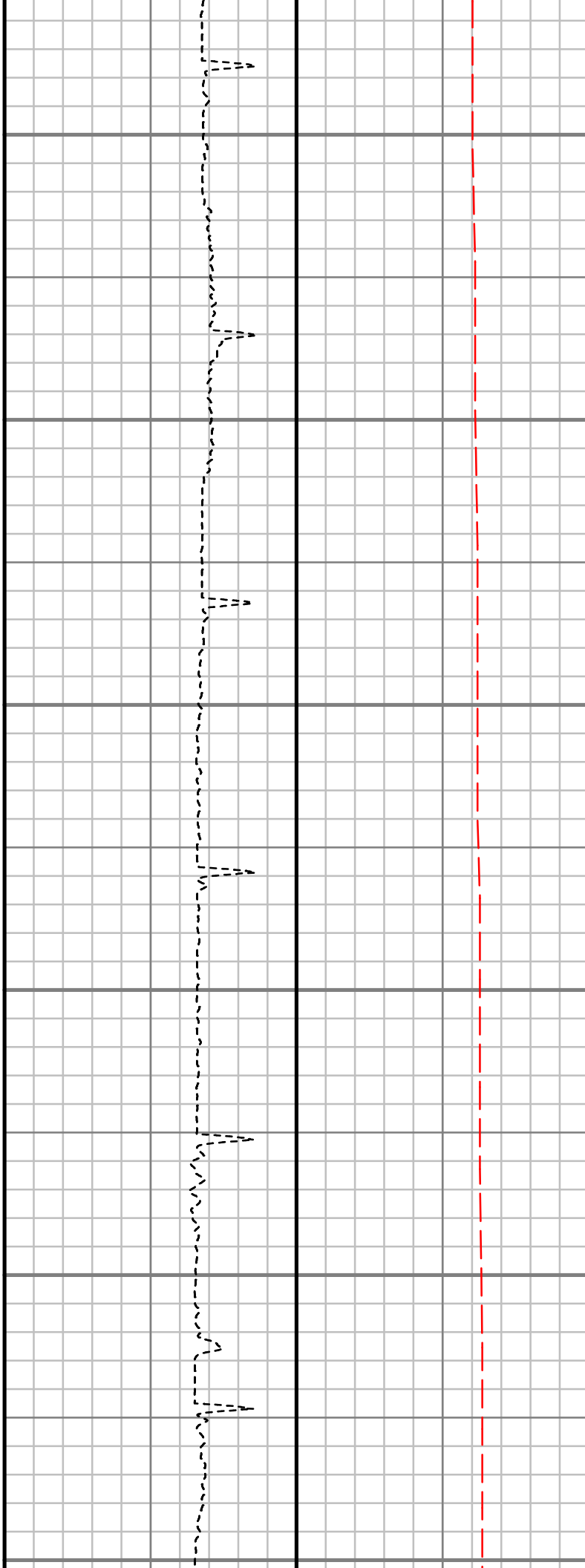
7700

7800

7900

8000

8100



S: 72 MD: 7613.00 ft
Inc: 88.46 deg Az:
270.84 deg TVD:
6313.33 ft

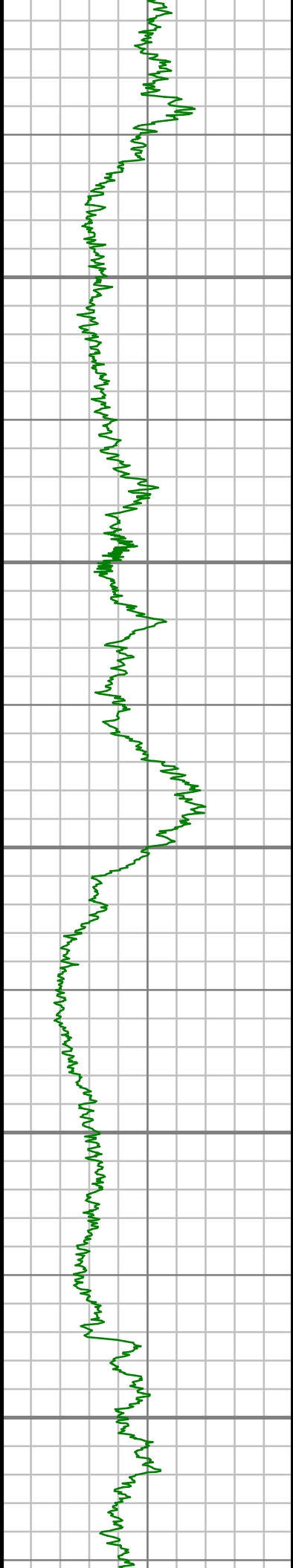
S: 73 MD: 7706.00 ft
Inc: 89.03 deg Az:
271.43 deg TVD:
6315.38 ft

S: 74 MD: 7801.00 ft
Inc: 89.93 deg Az:
271.70 deg TVD:
6316.24 ft

S: 75 MD: 7894.00 ft
Inc: 90.00 deg Az:
272.10 deg TVD:
6316.29 ft

S: 76 MD: 7988.00 ft
Inc: 89.33 deg Az:
271.31 deg TVD:
6316.84 ft

S: 77 MD: 8082.00 ft
Inc: 89.80 deg Az:
270.46 deg TVD:
6317.50 ft



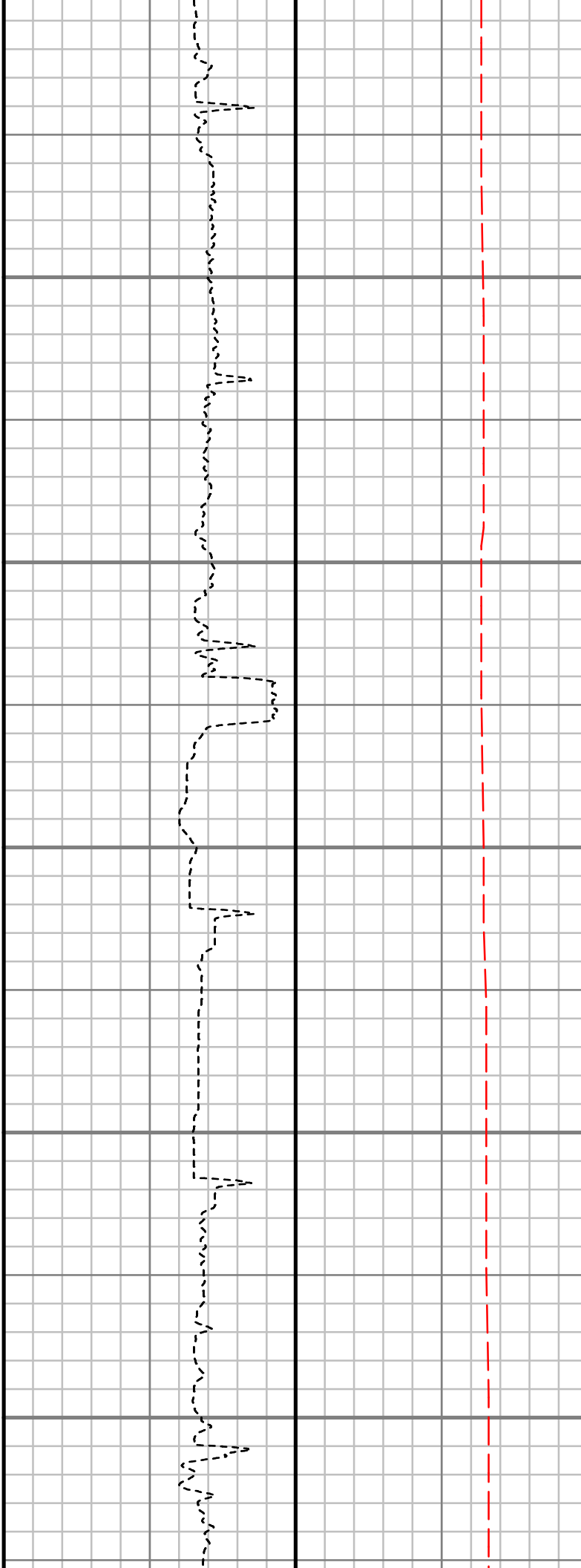
8200

8300

8400

8500

8600



S: 78 MD: 8177.00 ft
Inc: 90.57 deg Az:
271.06 deg TVD:
6317.25 ft

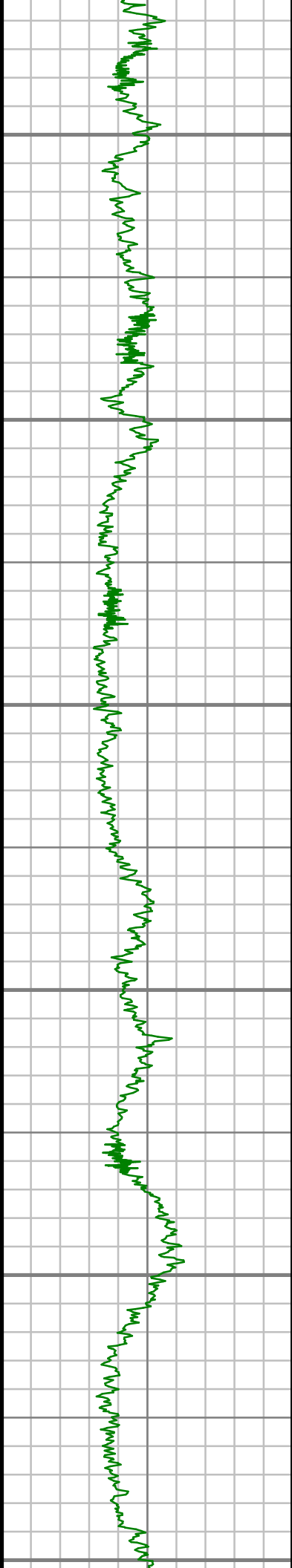
S: 79 MD: 8271.00 ft
Inc: 91.21 deg Az:
271.36 deg TVD:
6315.79 ft

S: 80 MD: 8364.00 ft
Inc: 90.37 deg Az:
272.38 deg TVD:
6314.51 ft

S: 81 MD: 8459.00 ft
Inc: 90.40 deg Az:
271.86 deg TVD:
6313.87 ft

S: 82 MD: 8552.00 ft
Inc: 90.30 deg Az:
271.91 deg TVD:
6313.30 ft

S: 83 MD: 8647.00 ft



8700

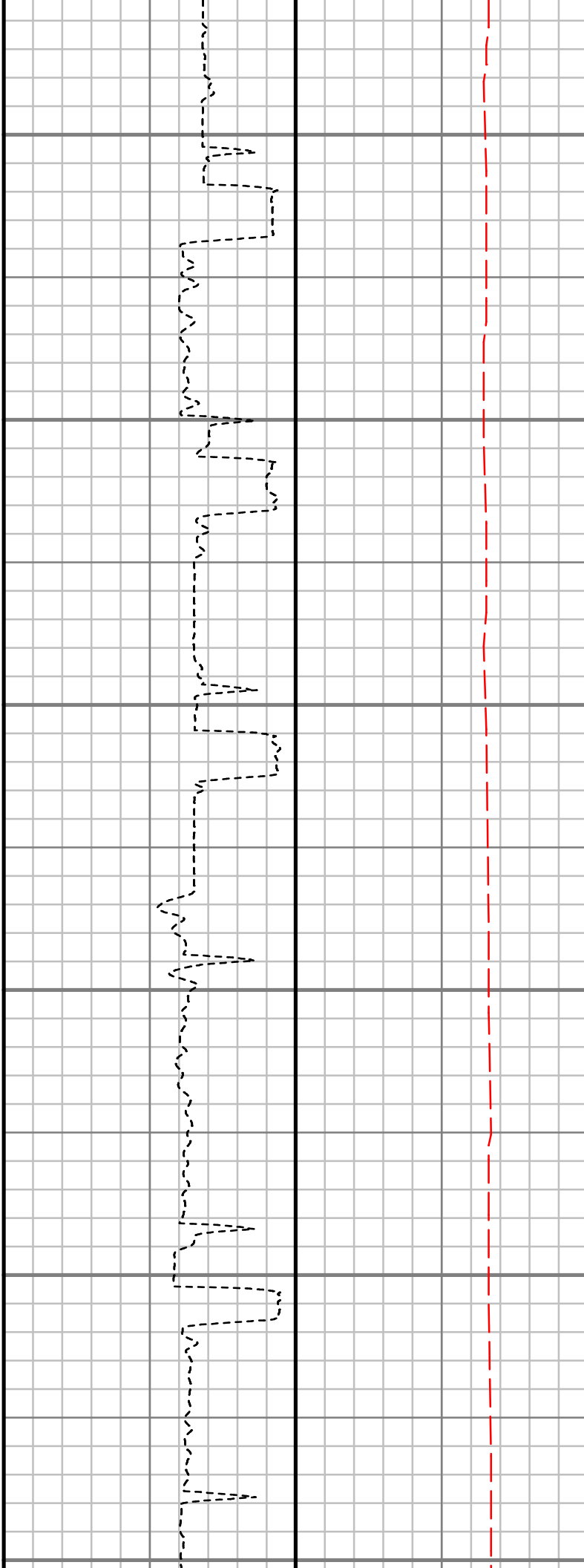
8800

8900

9000

9100

9200



Inc: 91.31 deg Az:
272.78 deg TVD:
6311.97 ft

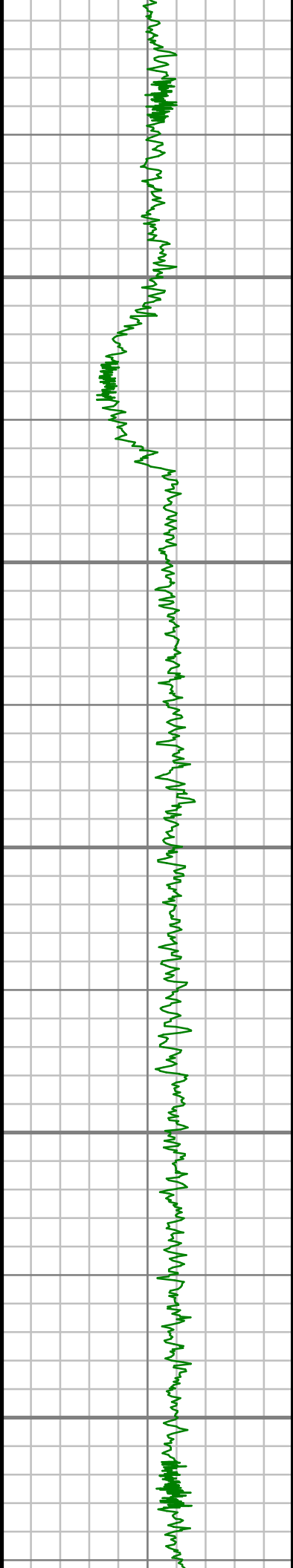
S: 84 MD: 8741.00 ft
Inc: 90.87 deg Az:
270.97 deg TVD:
6310.18 ft

S: 85 MD: 8835.00 ft
Inc: 90.47 deg Az:
269.58 deg TVD:
6309.08 ft

S: 86 MD: 8930.00 ft
Inc: 88.86 deg Az:
270.58 deg TVD:
6309.63 ft

S: 87 MD: 9024.00 ft
Inc: 89.43 deg Az:
270.44 deg TVD:
6311.04 ft

S: 88 MD: 9118.00 ft
Inc: 89.23 deg Az:
269.87 deg TVD:
6312.14 ft



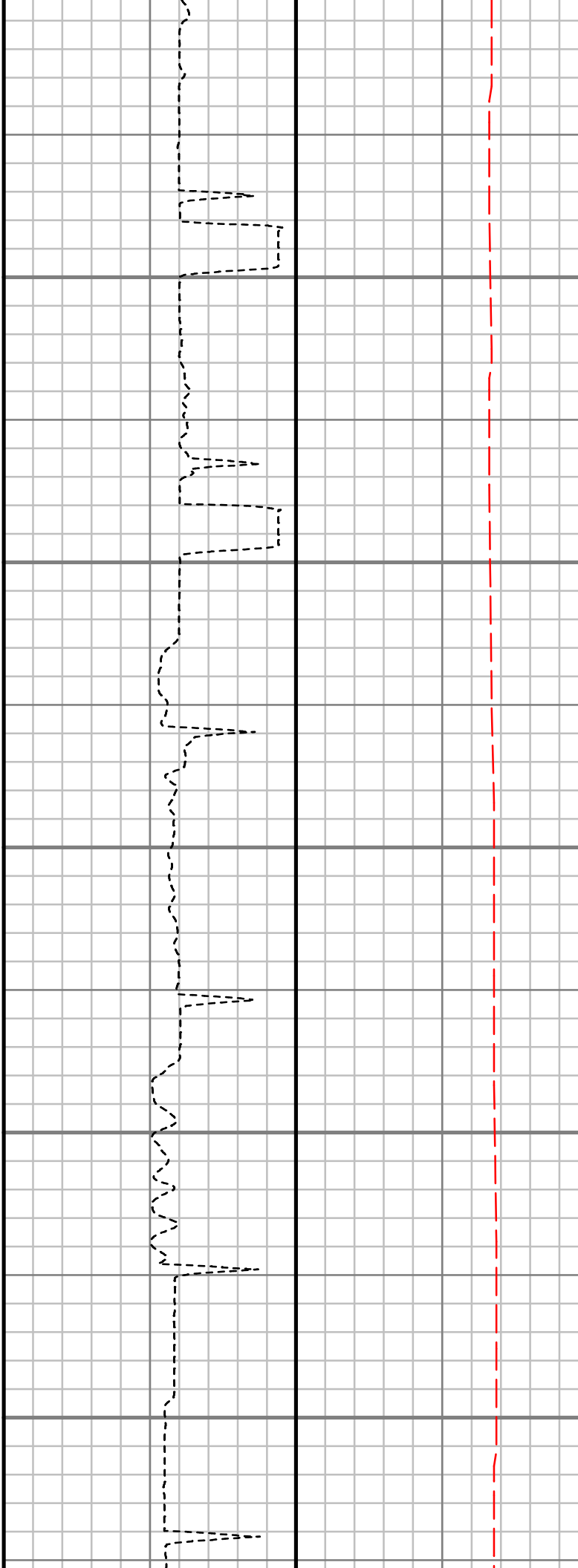
9300

9400

9500

9600

9700



S: 89 MD: 9211.00 ft
Inc: 89.93 deg Az:
270.29 deg TVD:
6312.82 ft

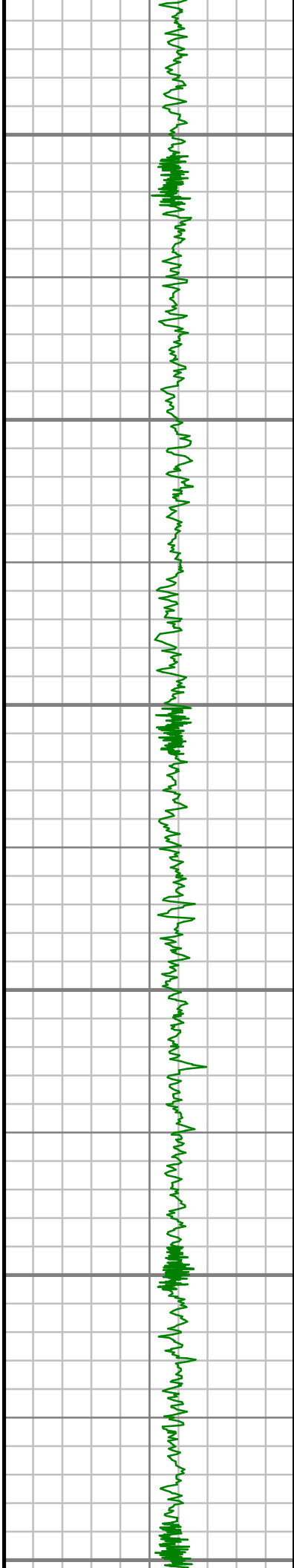
S: 90 MD: 9305.00 ft
Inc: 87.55 deg Az:
267.93 deg TVD:
6314.89 ft

S: 91 MD: 9400.00 ft
Inc: 89.97 deg Az:
269.92 deg TVD:
6316.95 ft

S: 92 MD: 9494.00 ft
Inc: 89.56 deg Az:
268.19 deg TVD:
6317.33 ft

S: 93 MD: 9589.00 ft
Inc: 89.46 deg Az:
268.32 deg TVD:
6318.14 ft

S: 94 MD: 9682.00 ft
Inc: 89.97 deg Az:
268.15 deg TVD:
6318.60 ft



9800

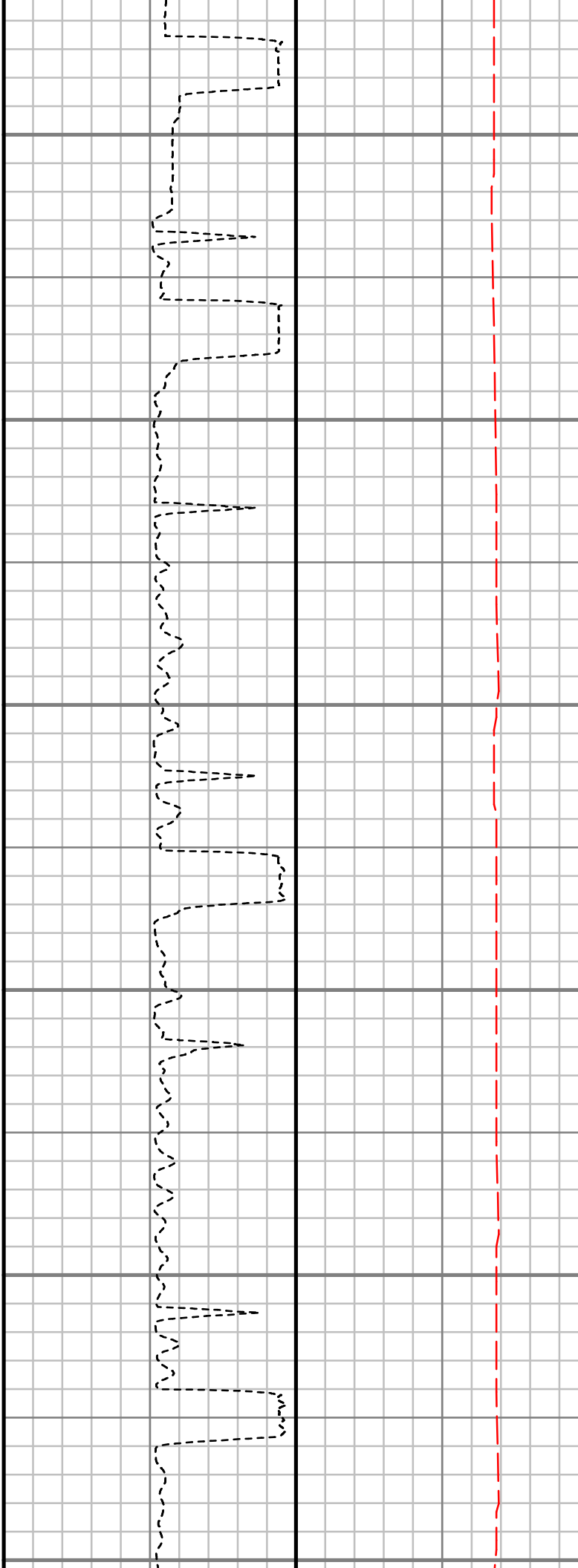
9900

10000

10100

10200

10300



S: 95 MD: 9776.00 ft
Inc: 89.30 deg Az:
265.24 deg TVD:
6319.21 ft

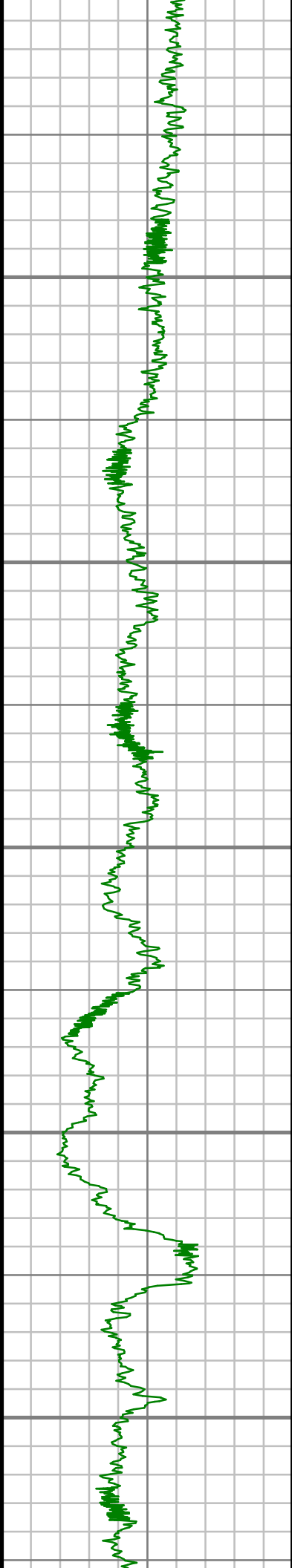
S: 96 MD: 9871.00 ft
Inc: 89.40 deg Az:
271.48 deg TVD:
6320.29 ft

S: 97 MD: 9966.00 ft
Inc: 89.66 deg Az:
270.48 deg TVD:
6321.07 ft

S: 98 MD: 10060.00 ft
Inc: 90.03 deg Az:
272.25 deg TVD:
6321.32 ft

S: 99 MD: 10154.00 ft
Inc: 89.97 deg Az:
269.74 deg TVD:
6321.32 ft

S: 100 MD: 10248.00 ft
Inc: 89.63 deg Az:
269.34 deg TVD:
6321.65 ft



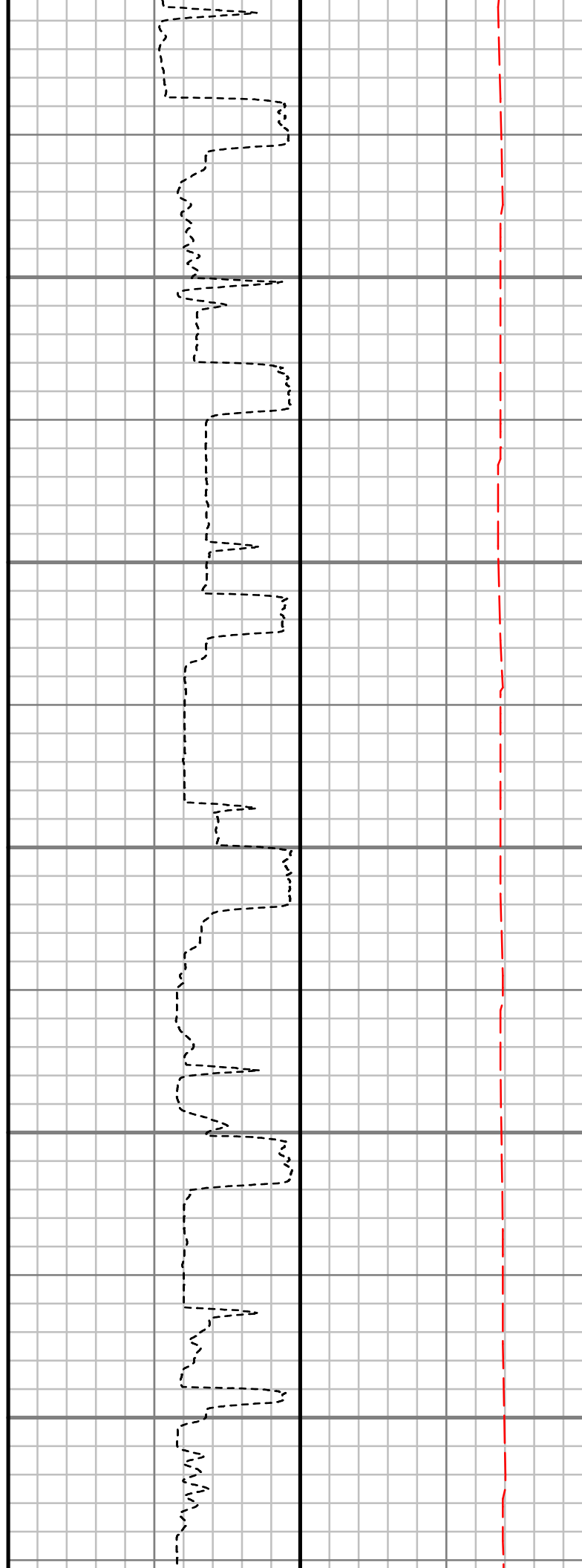
10400

10500

10600

10700

10800



S: 101 MD: 10342.00 ft
Inc: 89.13 deg Az:
273.17 deg TVD:
6322.67 ft

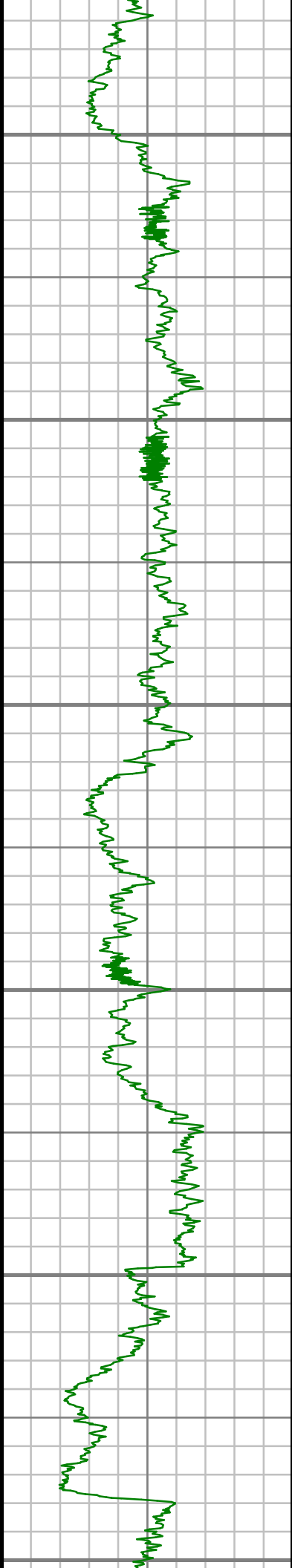
S: 102 MD: 10434.00 ft
Inc: 89.13 deg Az:
275.04 deg TVD:
6324.07 ft

S: 103 MD: 10525.00 ft
Inc: 88.12 deg Az:
274.77 deg TVD:
6326.25 ft

S: 104 MD: 10616.00 ft
Inc: 87.28 deg Az:
272.20 deg TVD:
6329.90 ft

S: 105 MD: 10707.00 ft
Inc: 87.28 deg Az:
271.05 deg TVD:
6334.22 ft

S: 106 MD: 10799.00 ft
Inc: 87.48 deg Az:
271.06 deg TVD:
6338.42 ft



10900

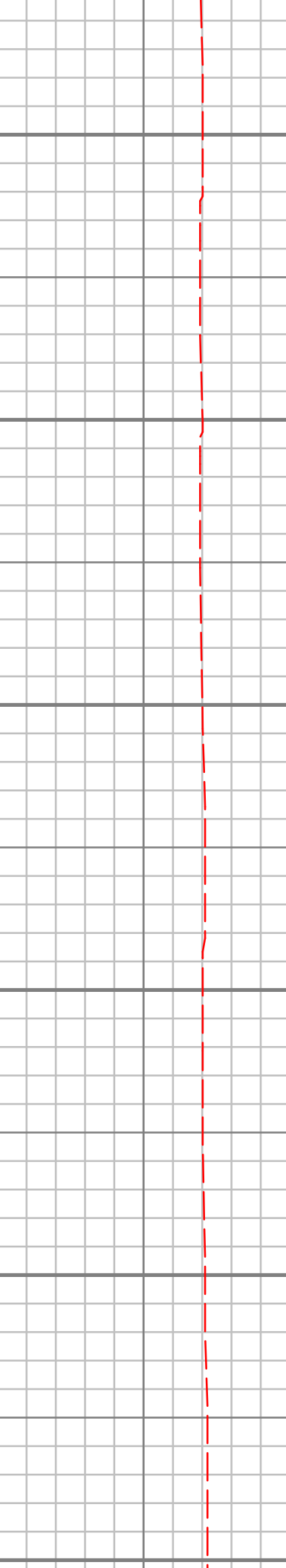
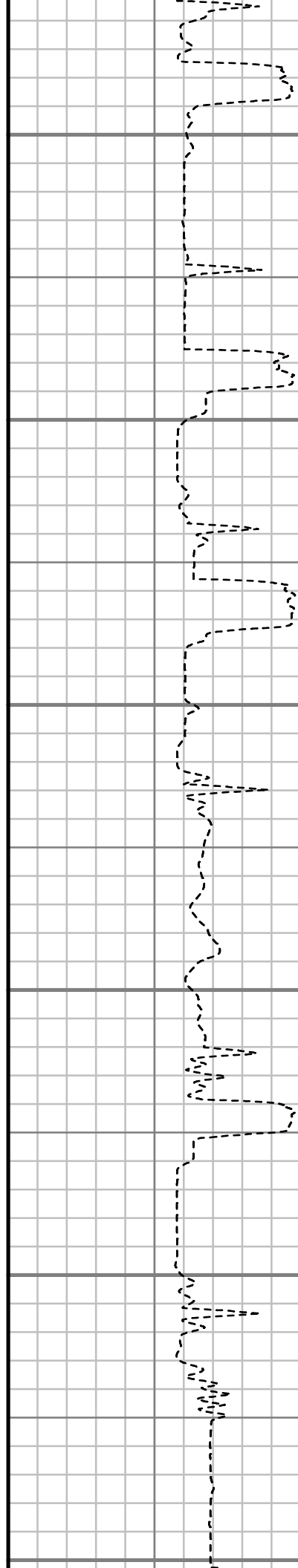
11000

11100

11200

11300

11400



S: 107 MD: 10890.00 ft
Inc: 87.95 deg Az:
269.88 deg TVD:
6342.05 ft

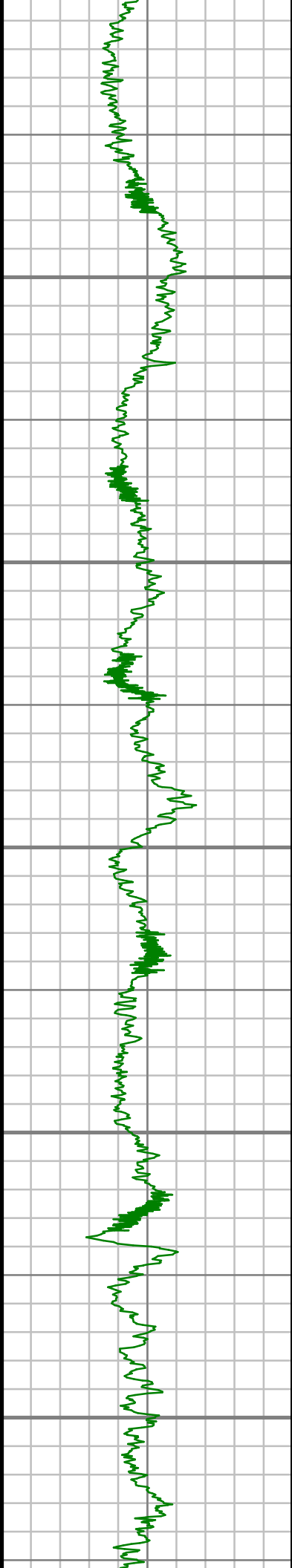
S: 108 MD: 10981.00 ft
Inc: 88.26 deg Az:
268.75 deg TVD:
6345.06 ft

S: 109 MD: 11072.00 ft
Inc: 91.21 deg Az:
268.93 deg TVD:
6345.48 ft

S: 110 MD: 11162.00 ft
Inc: 91.88 deg Az:
268.67 deg TVD:
6343.06 ft

S: 111 MD: 11254.00 ft
Inc: 90.70 deg Az:
268.01 deg TVD:
6340.99 ft

S: 112 MD: 11344.00 ft
Inc: 90.07 deg Az:
267.35 deg TVD:
6340.38 ft



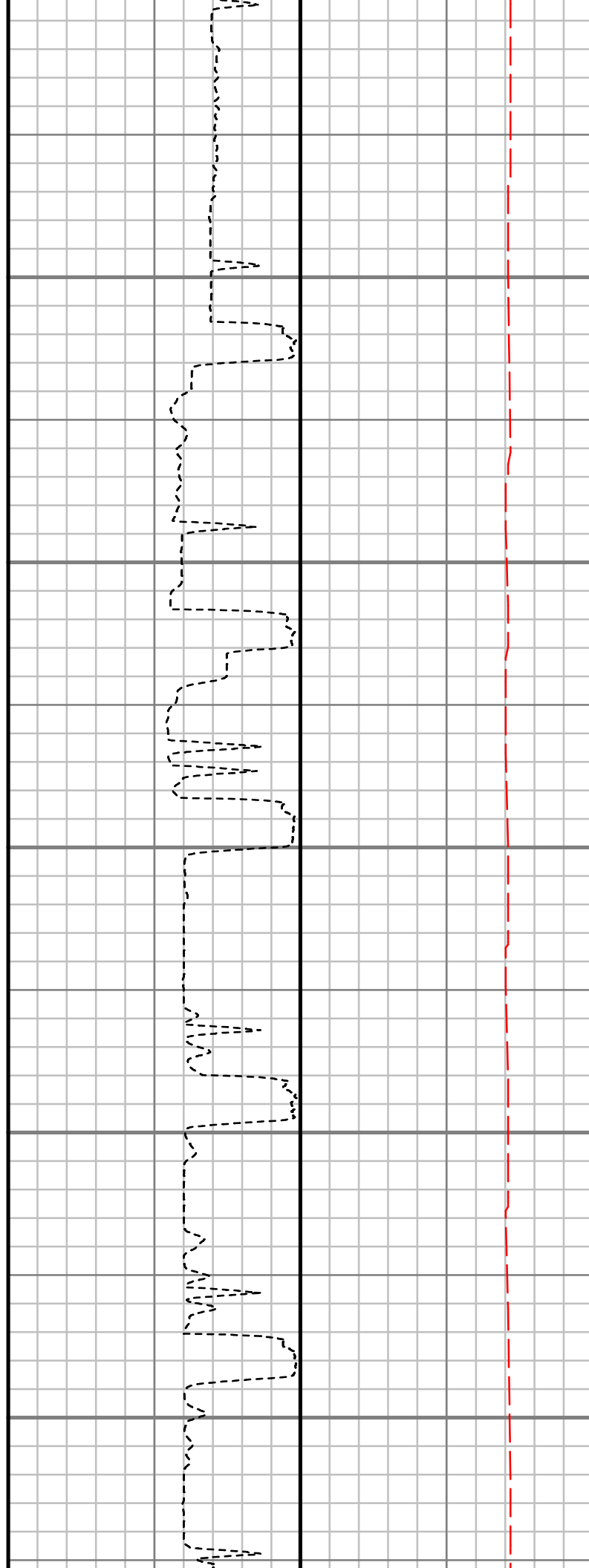
11500

11600

11700

11800

11900



S: 113 MD: 11435.00 ft
Inc: 90.37 deg Az:
267.67 deg TVD:
6340.03 ft

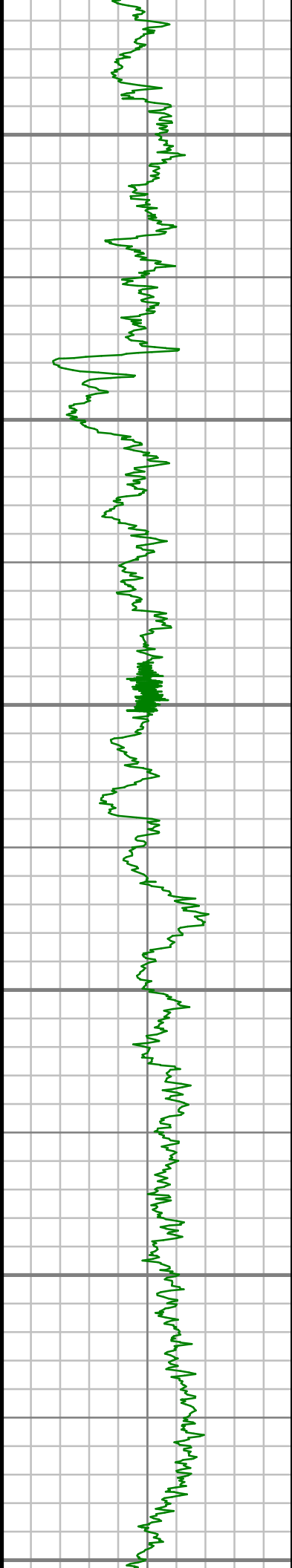
S: 114 MD: 11526.00 ft
Inc: 90.27 deg Az:
268.13 deg TVD:
6339.53 ft

S: 115 MD: 11617.00 ft
Inc: 89.56 deg Az:
268.09 deg TVD:
6339.66 ft

S: 116 MD: 11709.00 ft
Inc: 88.12 deg Az:
269.90 deg TVD:
6341.52 ft

S: 117 MD: 11801.00 ft
Inc: 87.55 deg Az:
270.61 deg TVD:
6345.00 ft

S: 118 MD: 11892.00 ft
Inc: 89.16 deg Az:
270.94 deg TVD:
6347.61 ft



12000

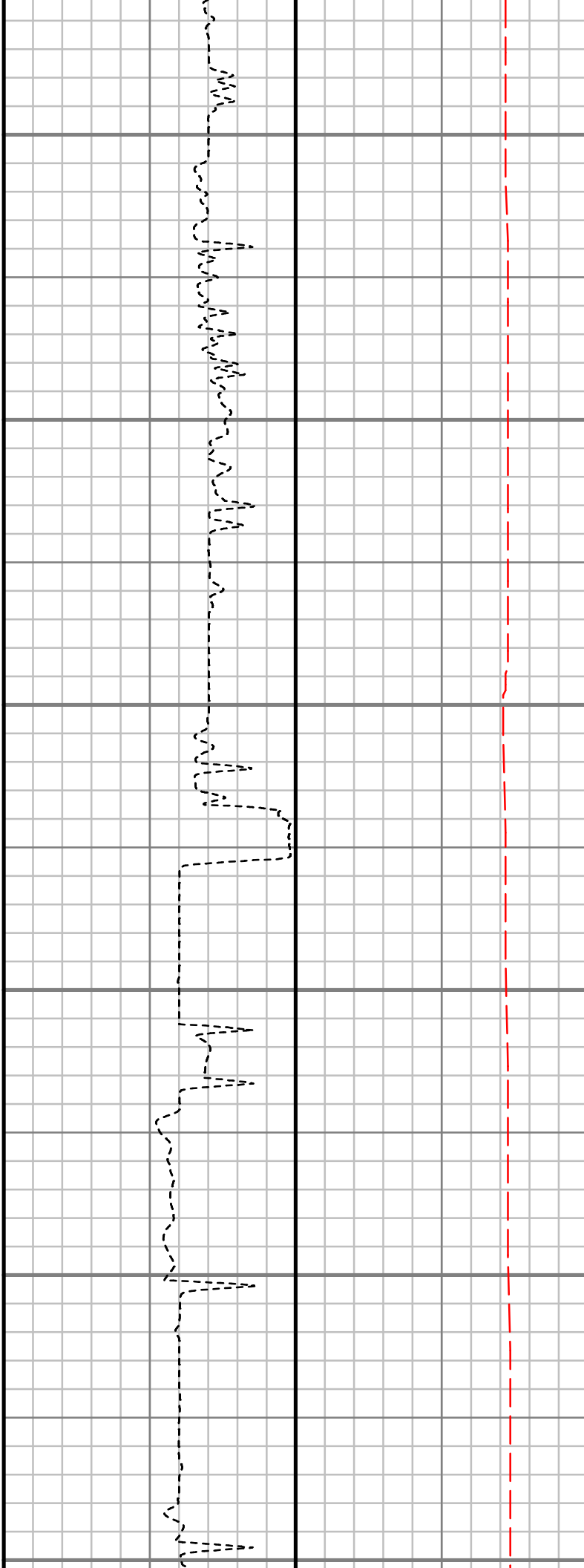
12100

12200

12300

12400

12500



S: 119 MD: 11983.00 ft
Inc: 89.77 deg Az:
270.79 deg TVD:
6348.46 ft

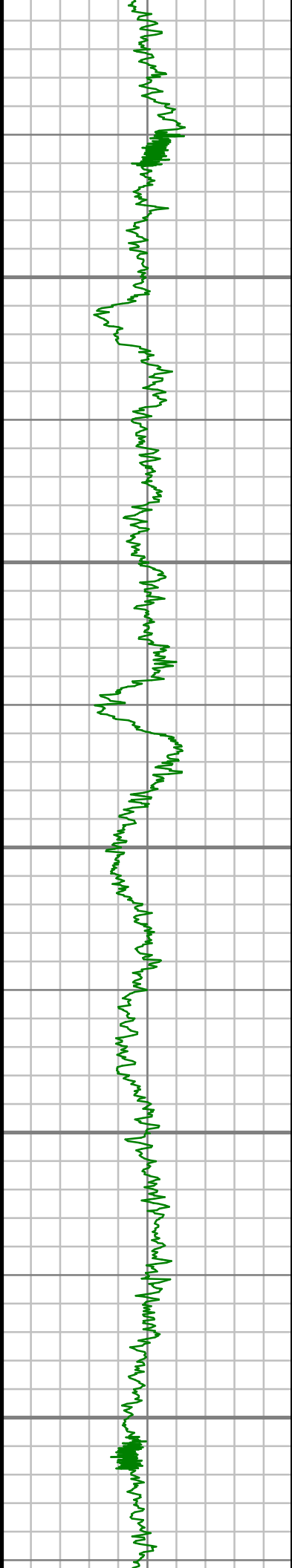
S: 120 MD: 12075.00 ft
Inc: 90.27 deg Az:
270.99 deg TVD:
6348.43 ft

S: 121 MD: 12165.00 ft
Inc: 91.07 deg Az:
270.81 deg TVD:
6347.38 ft

S: 122 MD: 12257.00 ft
Inc: 90.17 deg Az:
270.74 deg TVD:
6346.38 ft

S: 123 MD: 12348.00 ft
Inc: 90.30 deg Az:
271.45 deg TVD:
6346.01 ft

S: 124 MD: 12440.00 ft
Inc: 90.33 deg Az:
271.19 deg TVD:
6345.50 ft



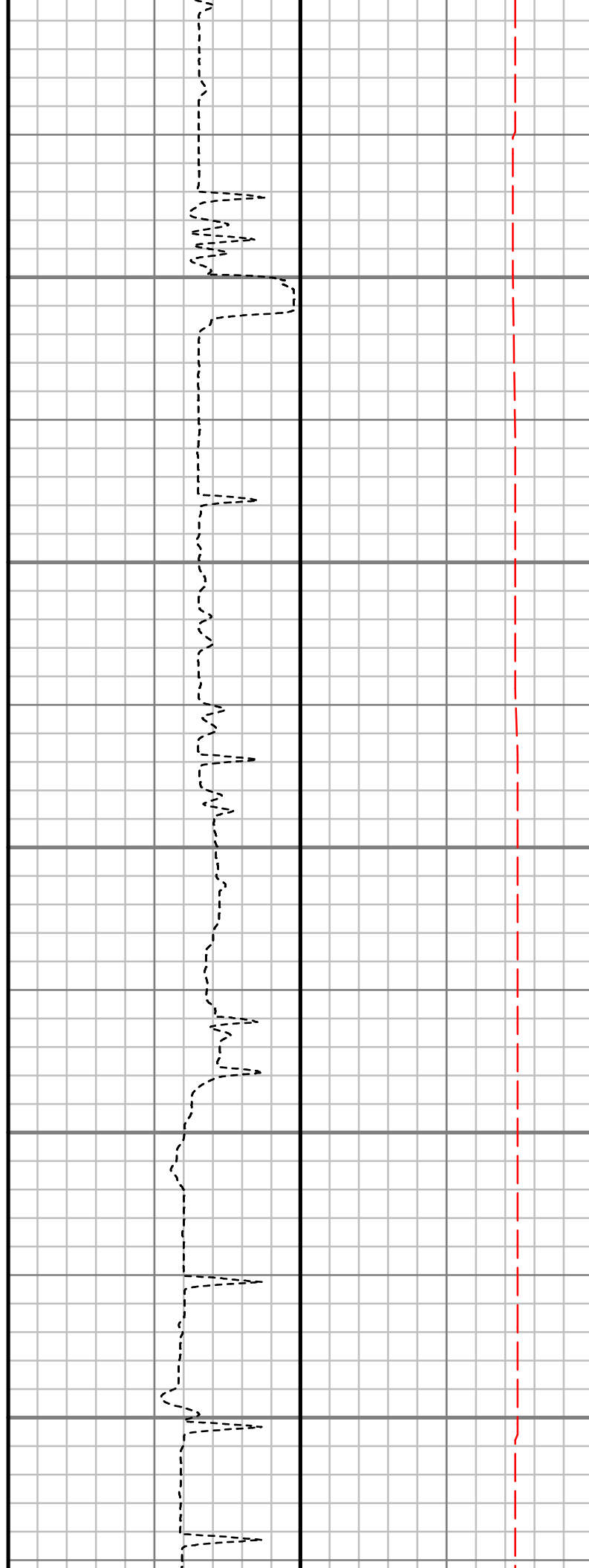
12600

12700

12800

12900

13000



S: 125 MD: 12531.00 ft
Inc: 90.77 deg Az:
271.31 deg TVD:
6344.62 ft

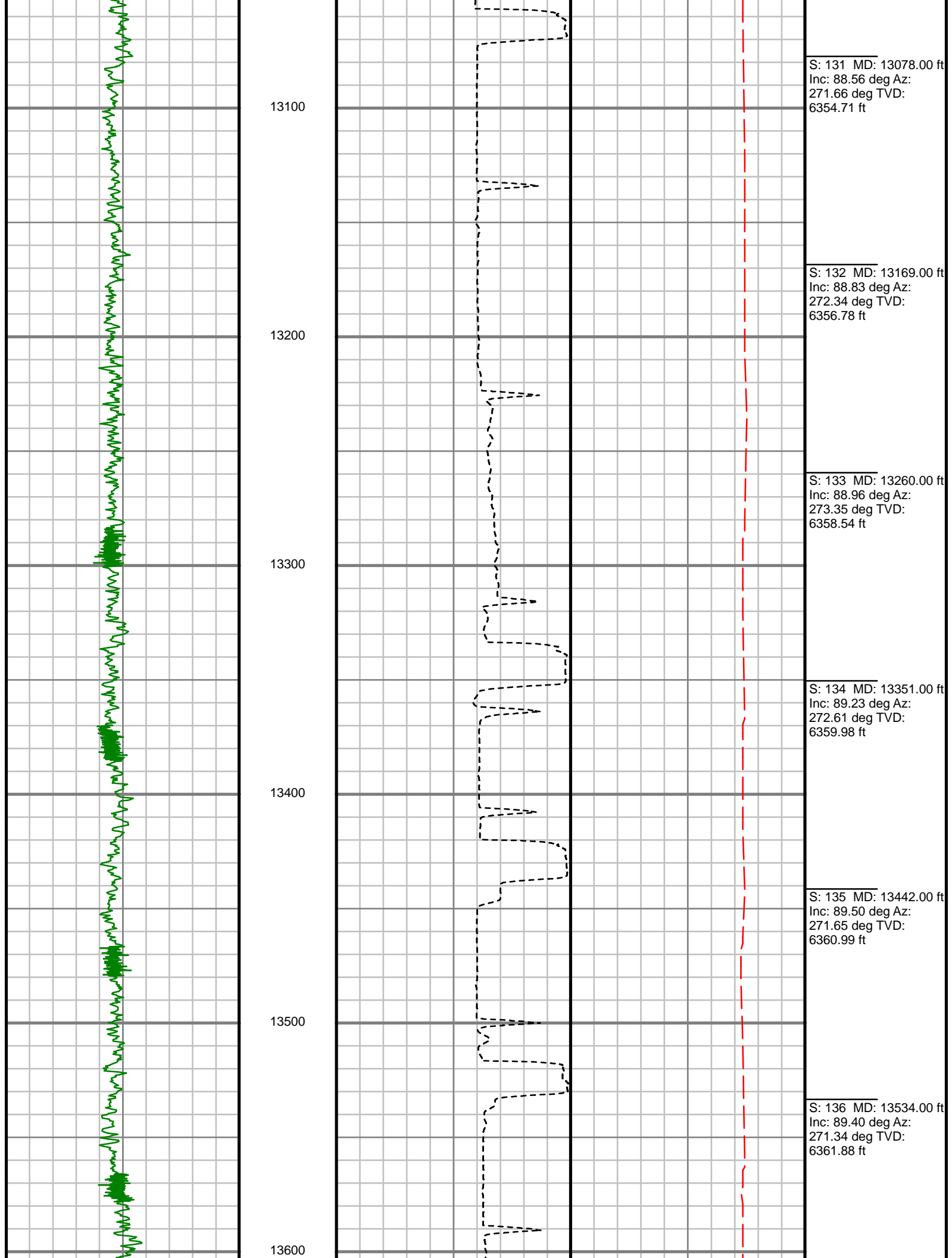
S: 126 MD: 12622.00 ft
Inc: 89.33 deg Az:
270.30 deg TVD:
6344.54 ft

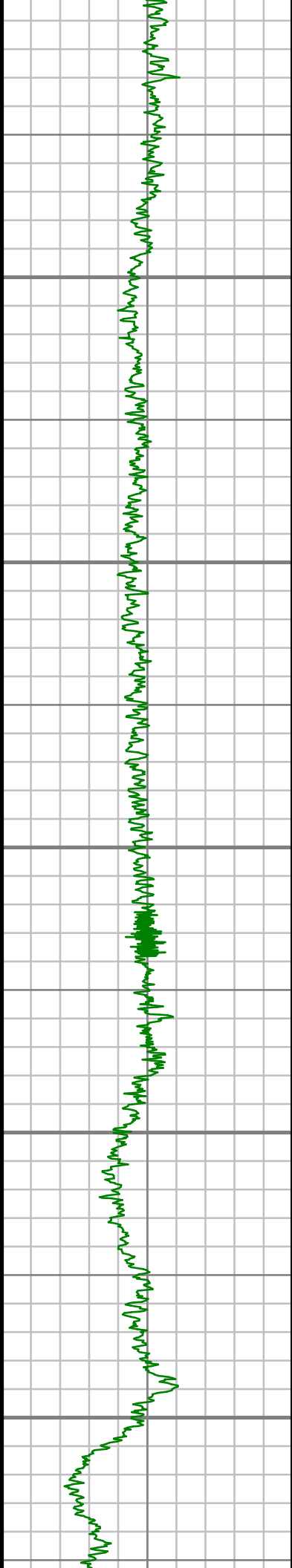
S: 127 MD: 12713.00 ft
Inc: 88.96 deg Az:
270.39 deg TVD:
6345.90 ft

S: 128 MD: 12804.00 ft
Inc: 88.66 deg Az:
271.06 deg TVD:
6347.79 ft

S: 129 MD: 12895.00 ft
Inc: 88.52 deg Az:
270.36 deg TVD:
6350.02 ft

S: 130 MD: 12986.00 ft
Inc: 88.52 deg Az:
269.90 deg TVD:
6352.37 ft





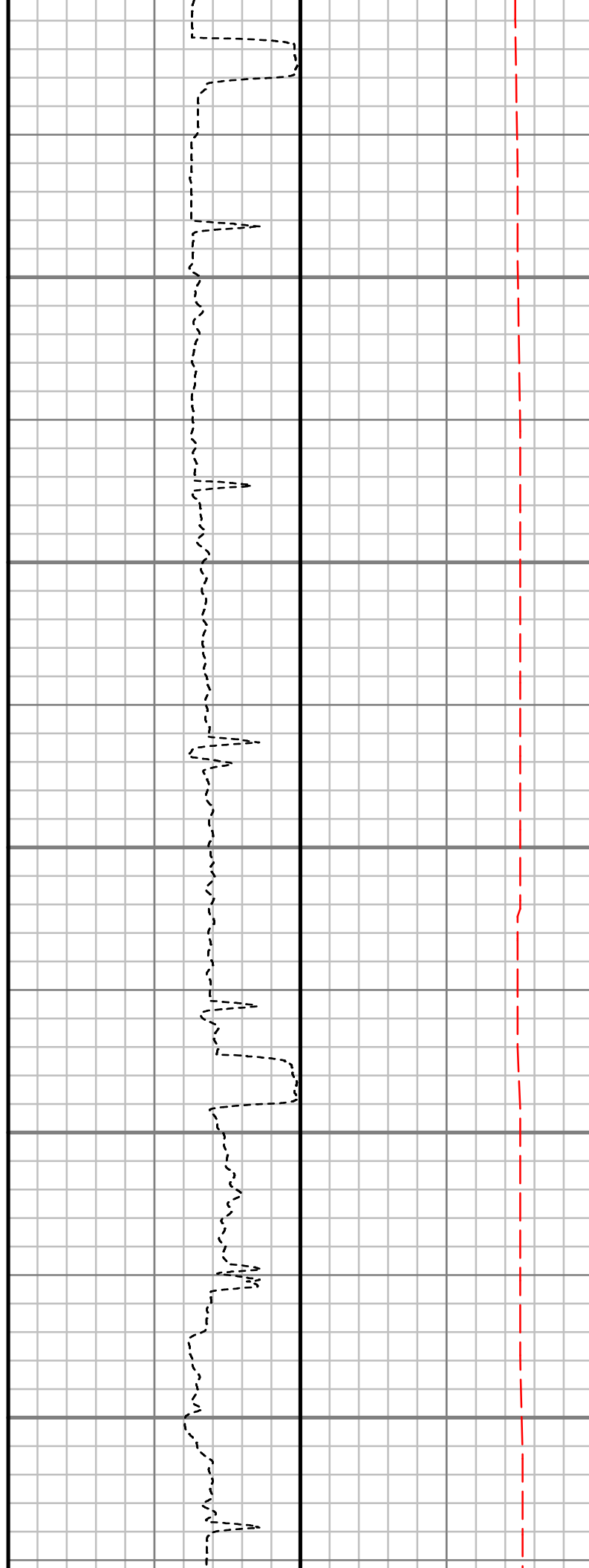
13700

13800

13900

14000

14100



S: 137 MD: 13624.00 ft
Inc: 89.50 deg Az:
270.10 deg TVD:
6362.75 ft

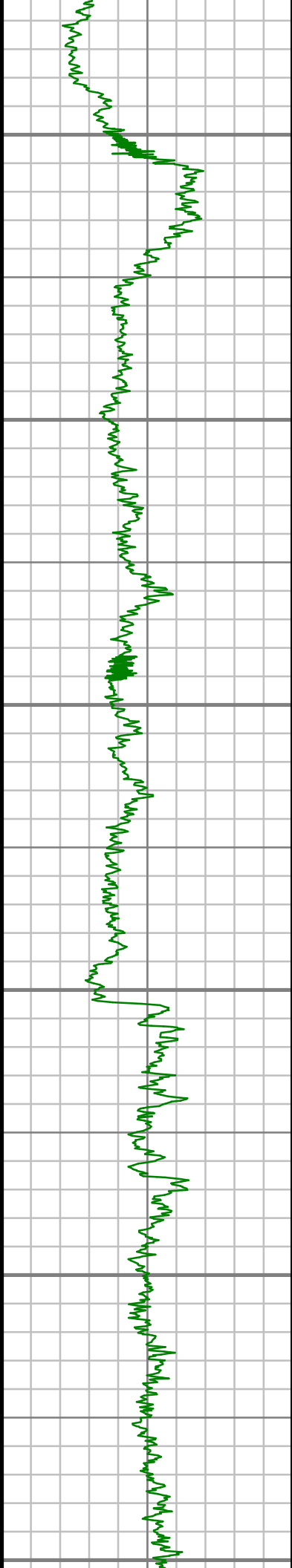
S: 138 MD: 13715.00 ft
Inc: 89.90 deg Az:
270.74 deg TVD:
6363.23 ft

S: 139 MD: 13806.00 ft
Inc: 90.30 deg Az:
271.34 deg TVD:
6363.07 ft

S: 140 MD: 13898.00 ft
Inc: 89.66 deg Az:
271.21 deg TVD:
6363.10 ft

S: 141 MD: 13989.00 ft
Inc: 87.28 deg Az:
269.50 deg TVD:
6365.52 ft

S: 142 MD: 14081.00 ft
Inc: 87.18 deg Az:
269.44 deg TVD:
6369.96 ft



14200

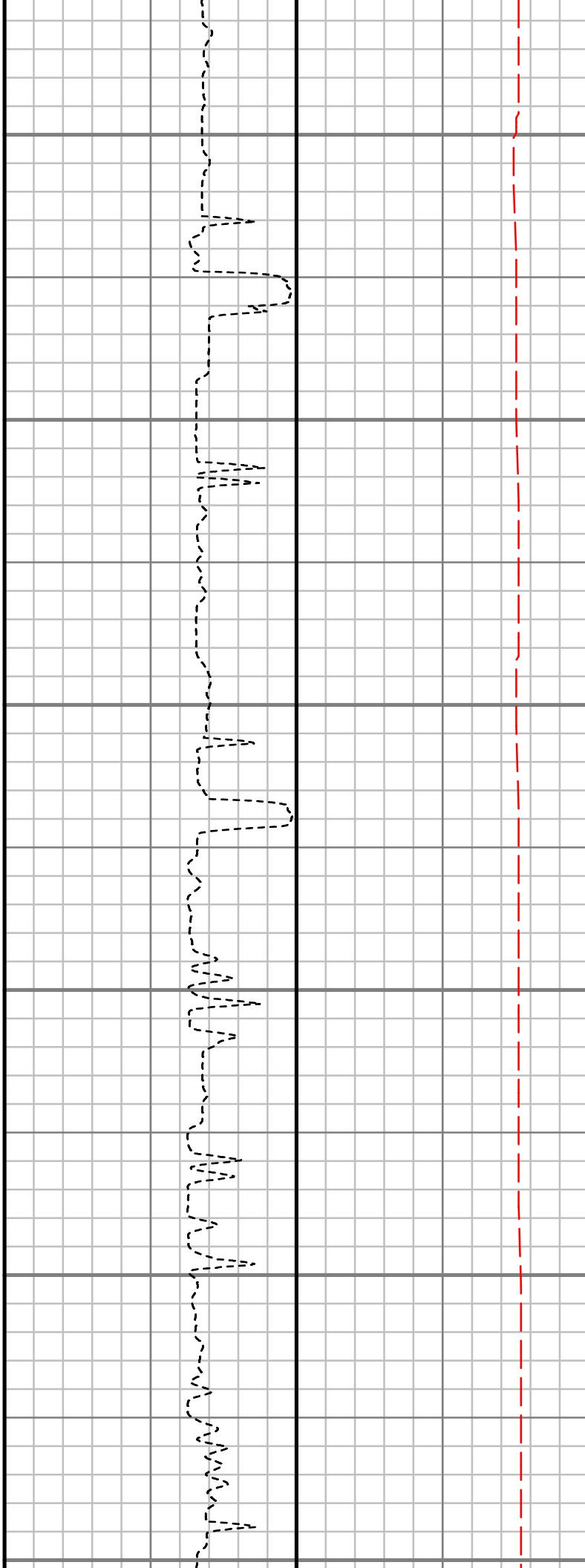
14300

14400

14500

14600

14700



S: 143 MD: 14173.00 ft
Inc: 87.45 deg Az:
269.99 deg TVD:
6374.28 ft

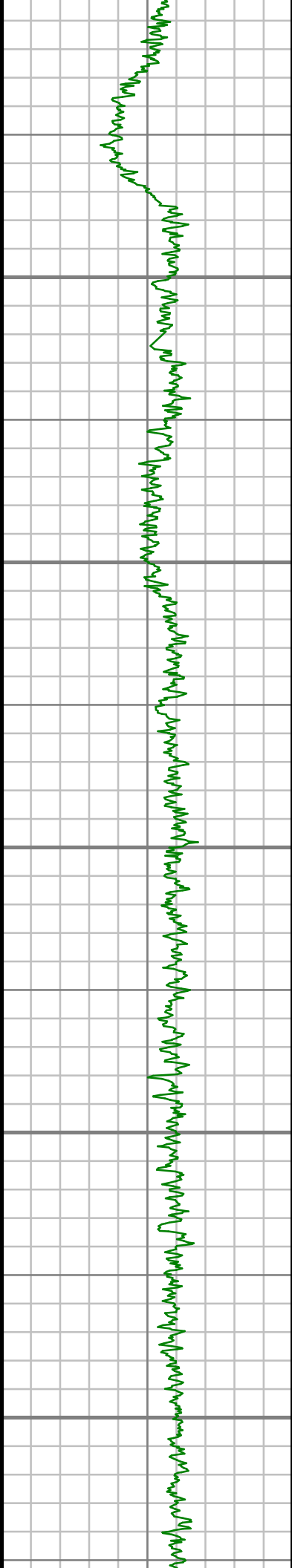
S: 144 MD: 14264.00 ft
Inc: 88.12 deg Az:
269.24 deg TVD:
6377.79 ft

S: 145 MD: 14355.00 ft
Inc: 87.85 deg Az:
268.54 deg TVD:
6380.99 ft

S: 146 MD: 14447.00 ft
Inc: 89.16 deg Az:
269.01 deg TVD:
6383.39 ft

S: 147 MD: 14539.00 ft
Inc: 91.14 deg Az:
269.96 deg TVD:
6383.15 ft

S: 148 MD: 14630.00 ft
Inc: 90.40 deg Az:
270.07 deg TVD:
6381.92 ft



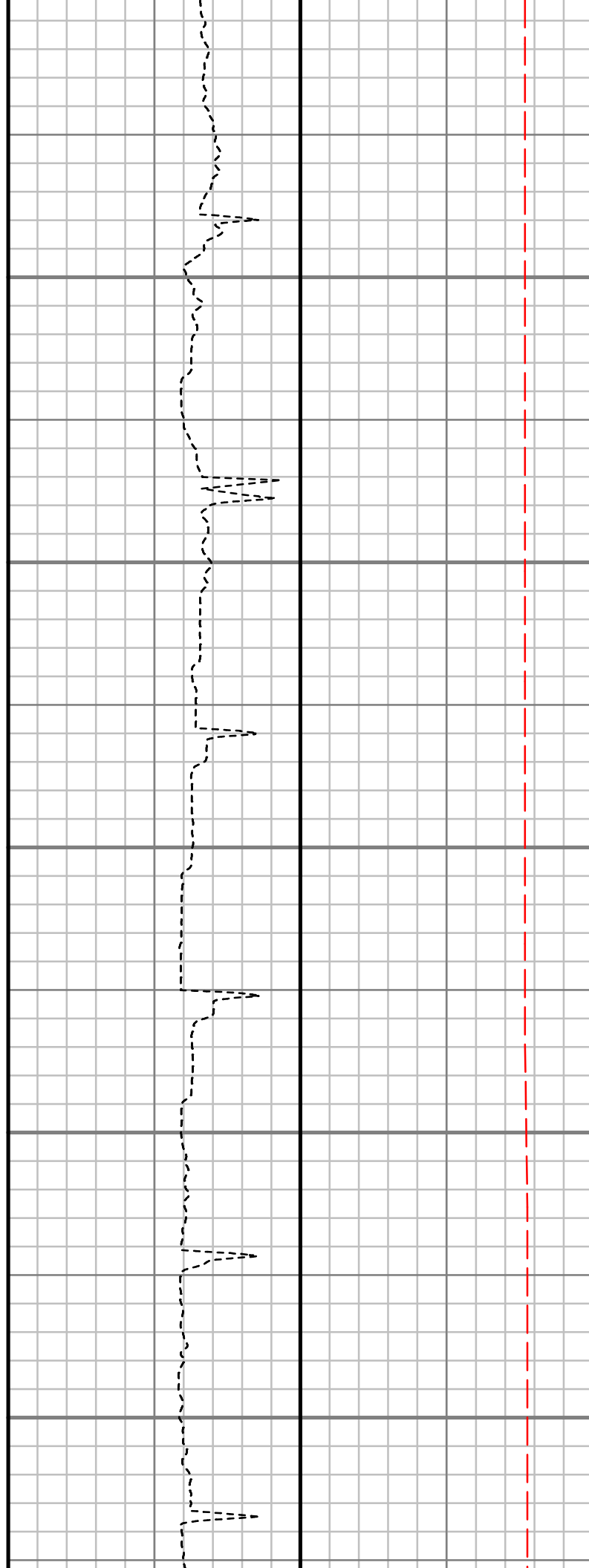
14800

14900

15000

15100

15200



S: 149 MD: 14721.00 ft
Inc: 90.23 deg Az:
270.65 deg TVD:
6381.42 ft

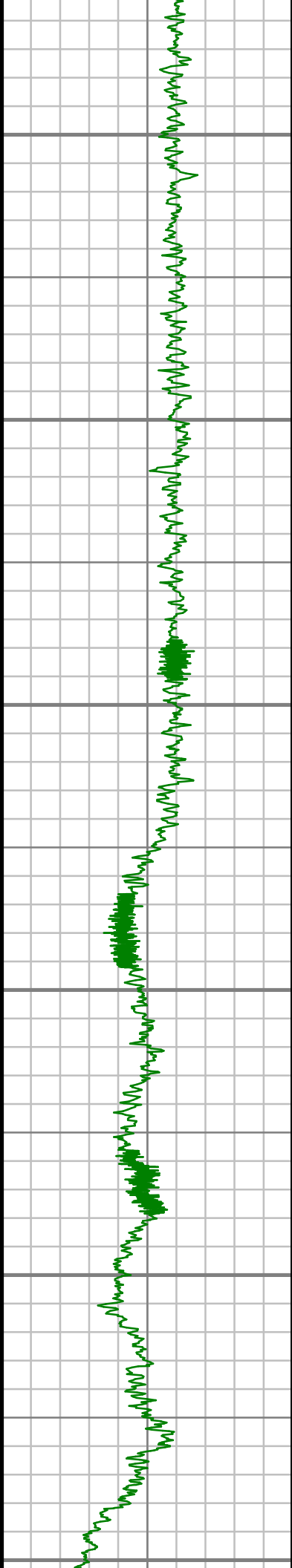
S: 150 MD: 14813.00 ft
Inc: 91.31 deg Az:
271.86 deg TVD:
6380.18 ft

S: 151 MD: 14904.00 ft
Inc: 89.20 deg Az:
269.05 deg TVD:
6379.77 ft

S: 152 MD: 14995.00 ft
Inc: 90.03 deg Az:
269.40 deg TVD:
6380.39 ft

S: 153 MD: 15087.00 ft
Inc: 90.54 deg Az:
269.45 deg TVD:
6379.93 ft

S: 154 MD: 15178.00 ft
Inc: 90.00 deg Az:
269.97 deg TVD:
6379.50 ft



15300

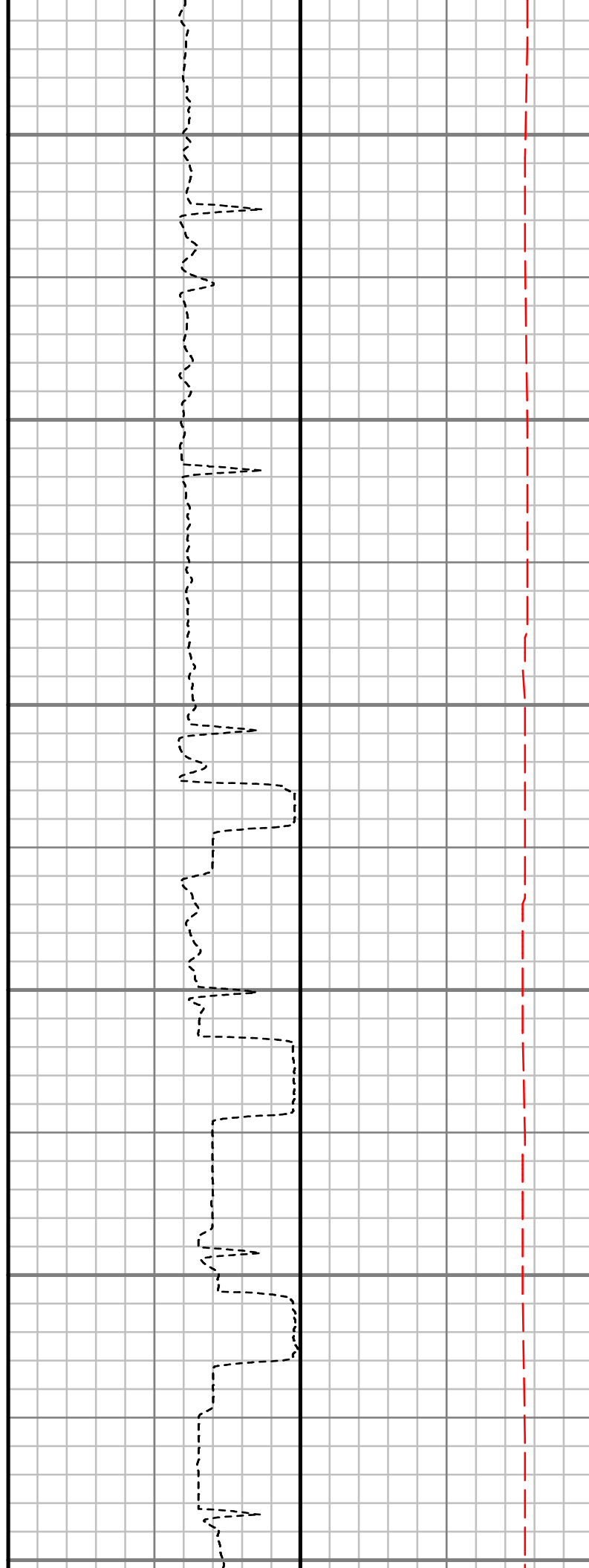
15400

15500

15600

15700

15800



S: 155 MD: 15269.00 ft
Inc: 89.63 deg Az:
268.31 deg TVD:
6379.79 ft

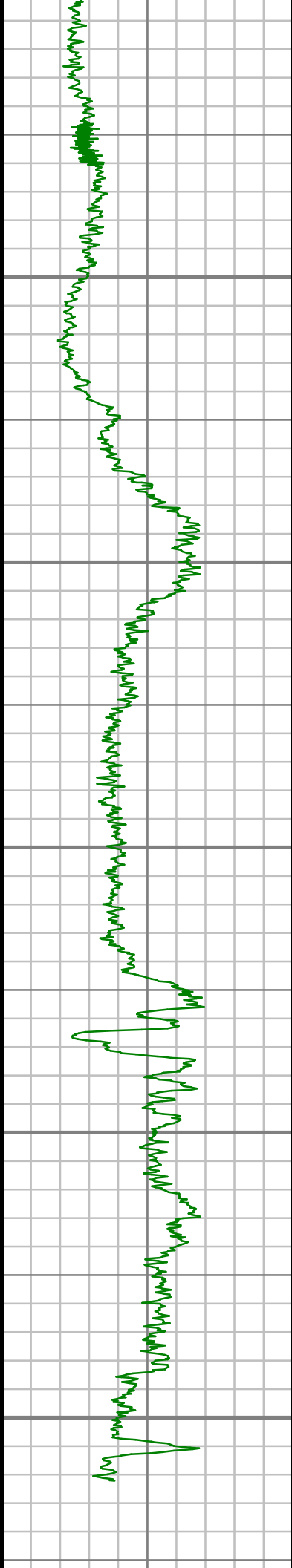
S: 156 MD: 15360.00 ft
Inc: 90.00 deg Az:
270.30 deg TVD:
6380.09 ft

S: 157 MD: 15452.00 ft
Inc: 89.97 deg Az:
272.42 deg TVD:
6380.11 ft

S: 158 MD: 15543.00 ft
Inc: 88.66 deg Az:
276.66 deg TVD:
6381.20 ft

S: 159 MD: 15635.00 ft
Inc: 87.89 deg Az:
273.62 deg TVD:
6383.98 ft

S: 160 MD: 15726.00 ft
Inc: 88.26 deg Az:
270.88 deg TVD:
6387.04 ft



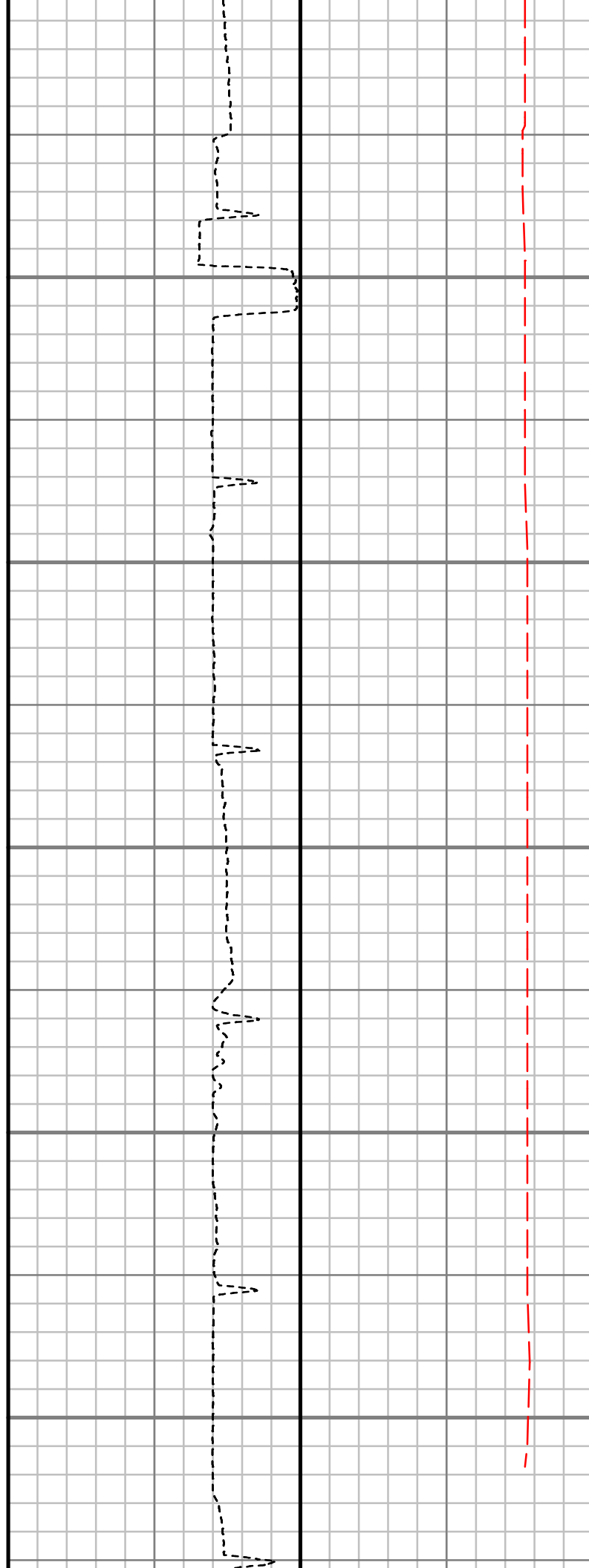
15900

16000

16100

16200

16300



S: 161 MD: 15820.00 ft
Inc: 89.40 deg Az:
271.43 deg TVD:
6388.97 ft

S: 162 MD: 15914.00 ft
Inc: 88.93 deg Az:
269.91 deg TVD:
6390.34 ft

S: 163 MD: 16008.00 ft
Inc: 89.06 deg Az:
269.97 deg TVD:
6391.99 ft

S: 164 MD: 16103.00 ft
Inc: 89.97 deg Az:
270.91 deg TVD:
6392.80 ft

S: 165 MD: 16198.00 ft
Inc: 90.07 deg Az:
270.92 deg TVD:
6392.77 ft

S: 166 MD: 16293.00 ft
Inc: 90.30 deg Az:
270.43 deg TVD:
6392.47 ft

S: 167 MD: 16316.00 ft
Inc: 90.44 deg Az:
270.74 deg TVD:
6392.32 ft

Gamma Ray (GR)									
0	Unit = aapi								200

MEASURED DEPTH
1:600 (ft)

Rate of Penetration (ROP)					Tool Temperature (T-TEMP)					Comments
1000 Unit = ft/hr 0					0 Unit = °F 300					



GAMMA RAY

2" = 100' MD