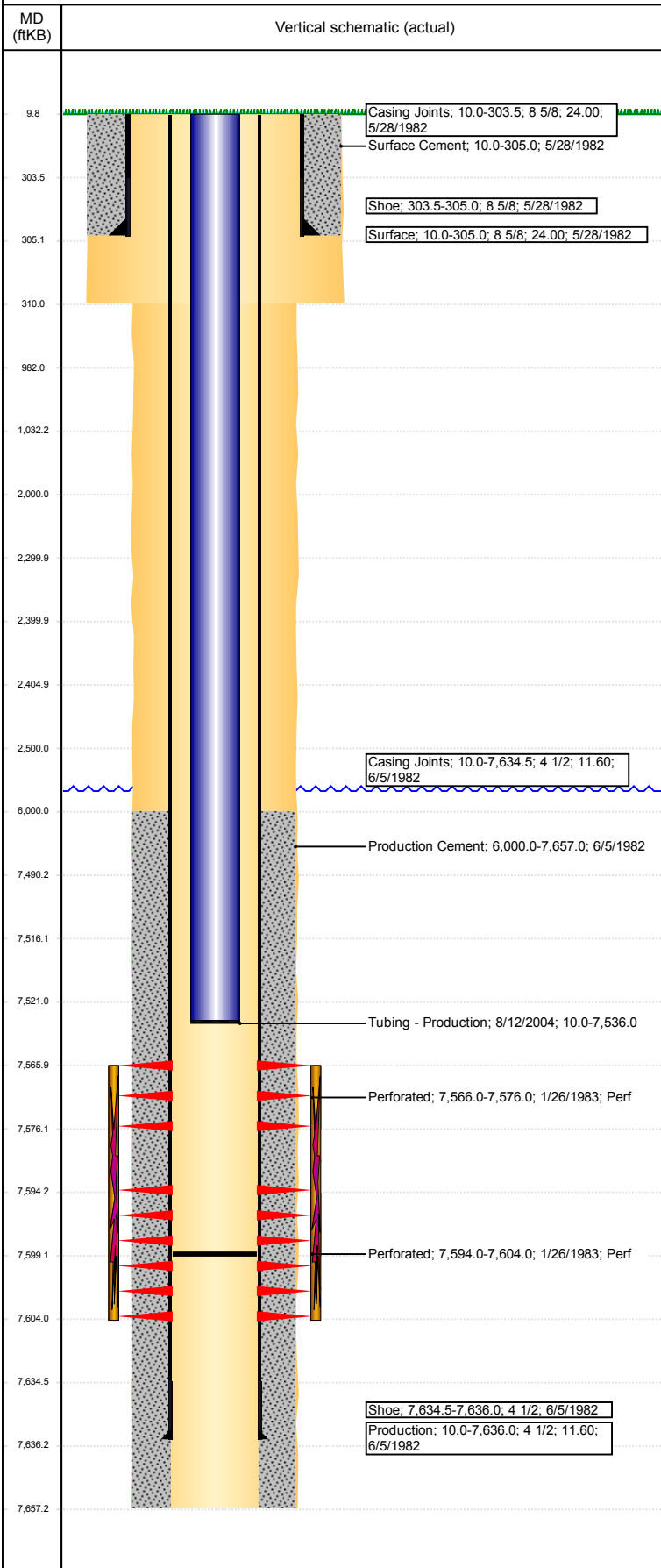


Well Name: NORRIS C UNIT 01

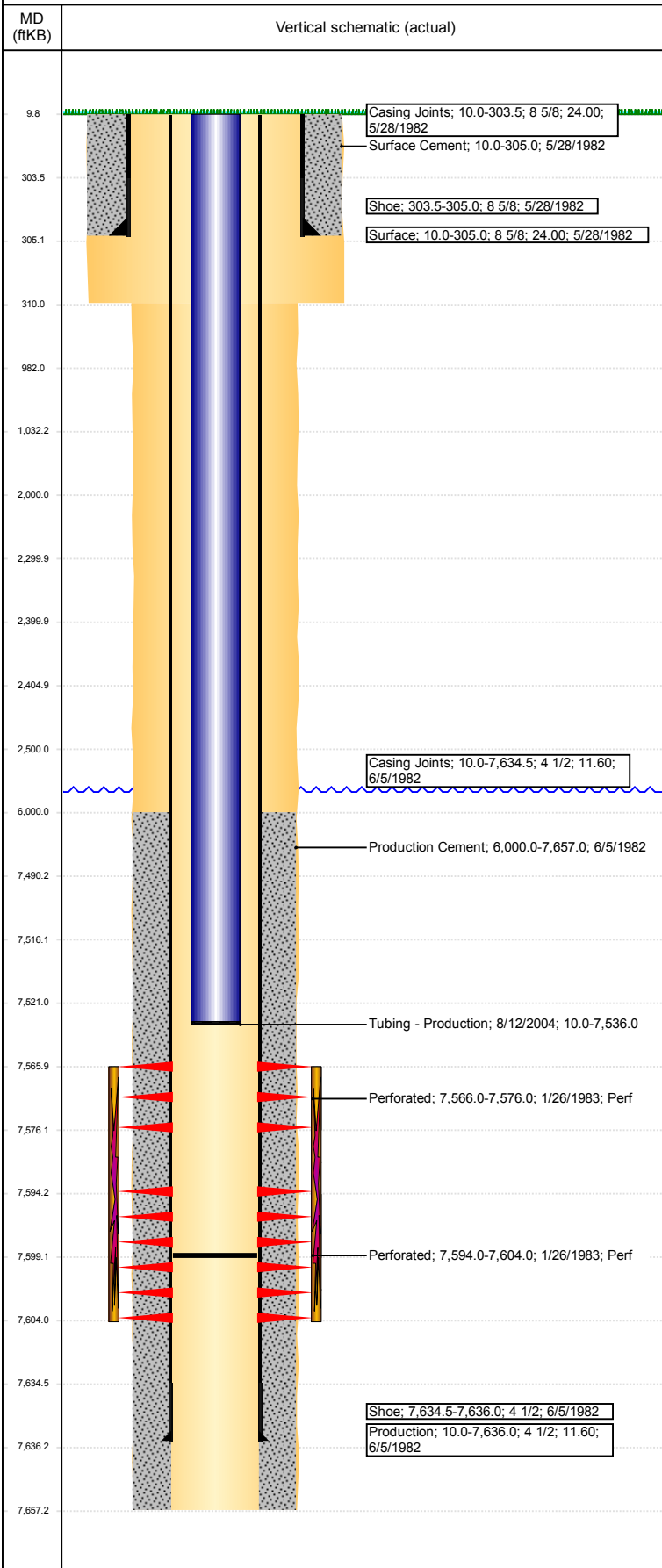
VERTICAL - ORIGINAL HOLE, 11/15/2017 7:46:03 AM



Well Header							
API	05-123-10626	Business Unit	DJ BASIN	District	15	Well Config	VERTICAL
Original KB Elevation (ft)	4,902	KB - GL / MSL (ftKB)	10.00	Spud Date	5/27/1982	P & A Date	
Comment							
BARELY ANYTHING IN FILE!							
NO CBL IN WELL FILE OR ON COGCC.							
Directions To Well							
49 & 30, S 3MI, E 1.75, S INTO							
Congressional Location							
Quarter 3	Quarter 4	Section	Township	Twnshp N/S Dir	Range	Range E/W Dir	
NE	NE	8	2	N	64	W	
Bottom Hole Location							
North-South Distance (ft)		From N or S Line		East-West Distance (ft)		From E or W Line	
Plug Back Total Depths							
Date	Depth (ftKB)	Method		Com			
2/9/1983	7,637.0			COMPLETION REPORT			
8/11/2004	7,599.0	TAG		NO CLEAN OUT			
Wellbore Sections							
Section Des		Size (in)	Act Top, MD (ftKB)	Act Btm, MD (ftKB)			
SURFACE		12 1/4	10	310			
PRODUCTION		7 7/8	310	7,657			
Zone Statuses							
Zone Name	Status Date	Status	Fluid Type	Job	Prod Method		
J SAND	2/8/1983	PR	Gas	DRILLING/CO...			
Casing Strings							
Surface, 305.0ftKB							
Casing Description	Run Date	OD (in)	Wt/Len (l...)	Grade	Top, MD (ft...)	MD (ftKB)	
Surface	5/28/1982	8 5/8	24.00		10.0	305.0	
Production, 7,636.0ftKB							
Casing Description	Run Date	OD (in)	Wt/Len (l...)	Grade	Top, MD (ft...)	MD (ftKB)	
Production	6/5/1982	4 1/2	11.60		10.0	7,636.0	
Cement							
Description	Top Depth (ftKB)	Bottom Depth (ftKB)					
Surface Cement	10.0	305.0					
Production Cement	6,000.0	7,657.0					
Dump Bail	7,490.0	7,516.0					
Balance Plug	2,405.0	2,500.0					
Balance Plug	2,300.0	2,400.0					
Cement Squeeze	2,000.0	2,500.0					
Balance Plug	982.0	1,032.0					
Balance Plug	305.0	982.0					
Balance Plug	10.0	305.0					
Tubing Strings							
Tubing Description	Run Date	String...	ID (in)	Wt (lb/ft)	Grade	Len (ft)	Set De...
Tubing - Production	8/12/2004	2 3/8	2.00	4.70	J-55	7,526.00	
Tubing Components							
Item Des	OD (in)	Wt (lb/ft)	Grade	Jts	Len (ft)	Btm (ftKB)	Btm (TVD) (ftKB)
EUE 8rd Tubing	2 3/8	4.70	J-55	247	7,524.50	7,534.5	
Pump Seating Nipple	2 3/8	1.10			1.00	7,535.5	
Notched collar	2 3/8				0.50	7,536.0	
Other In Hole							
Run Date	Des		OD (in)	Top (ftKB)	Btm (ftKB)		
11/14/2017	Cast Iron Bridge Plug		4	7,516.0	7,521.0		
11/14/2017	Cement Retainer		4	2,400.0	2,405.0		
Logs							
Date	Type		Top, MD (ftKB)	Btm, MD (ftKB)			
6/4/1982	COMPENSATED DENSITY		4,296.0	7,663.0			

Well Name: NORRIS C UNIT 01

VERTICAL - ORIGINAL HOLE, 11/15/2017 7:46:04 AM



Logs			
Date	Type	Top, MD (ftKB)	Btm, MD (ftKB)
6/4/1982	INDUCTION	307.0	7,660.0
5/31/2017	GYRO	0.0	7,450.0

Perforation Data					
Linked Zone	Bnch/St g	Sum of Entered Shot Total	Top (ftKB)	Btm (ftKB)	Date
J SAND, ORIGINAL HOLE		0	2,500.00	2,500.00	11/14/2017
J SAND, ORIGINAL HOLE		40	7,566.00	7,576.00	1/26/1983
J SAND, ORIGINAL HOLE		40	7,594.00	7,604.00	1/26/1983
Total (Sum)		80			

Stimulation Intervals		
Start Date	Primary Job Type	
1/26/1983	DRILLING/COMPLETION - ORIGINAL	
Technical Result	Tech Result Details	Tech Result Note
Comment		
Start Date	Primary Job Type	
1/27/1983	DRILLING/COMPLETION - ORIGINAL	
Technical Result	Tech Result Details	Tech Result Note
Comment		