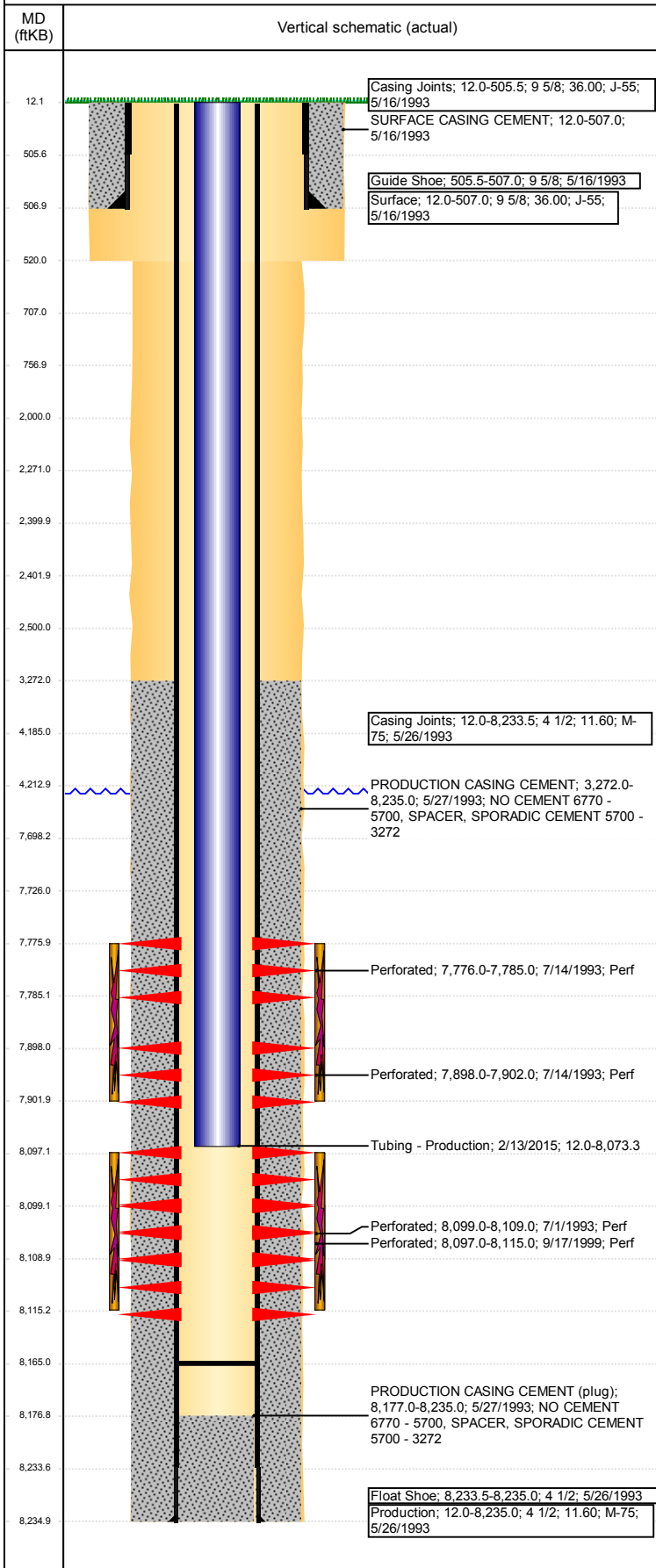


Well Name: UPRC 09-10F

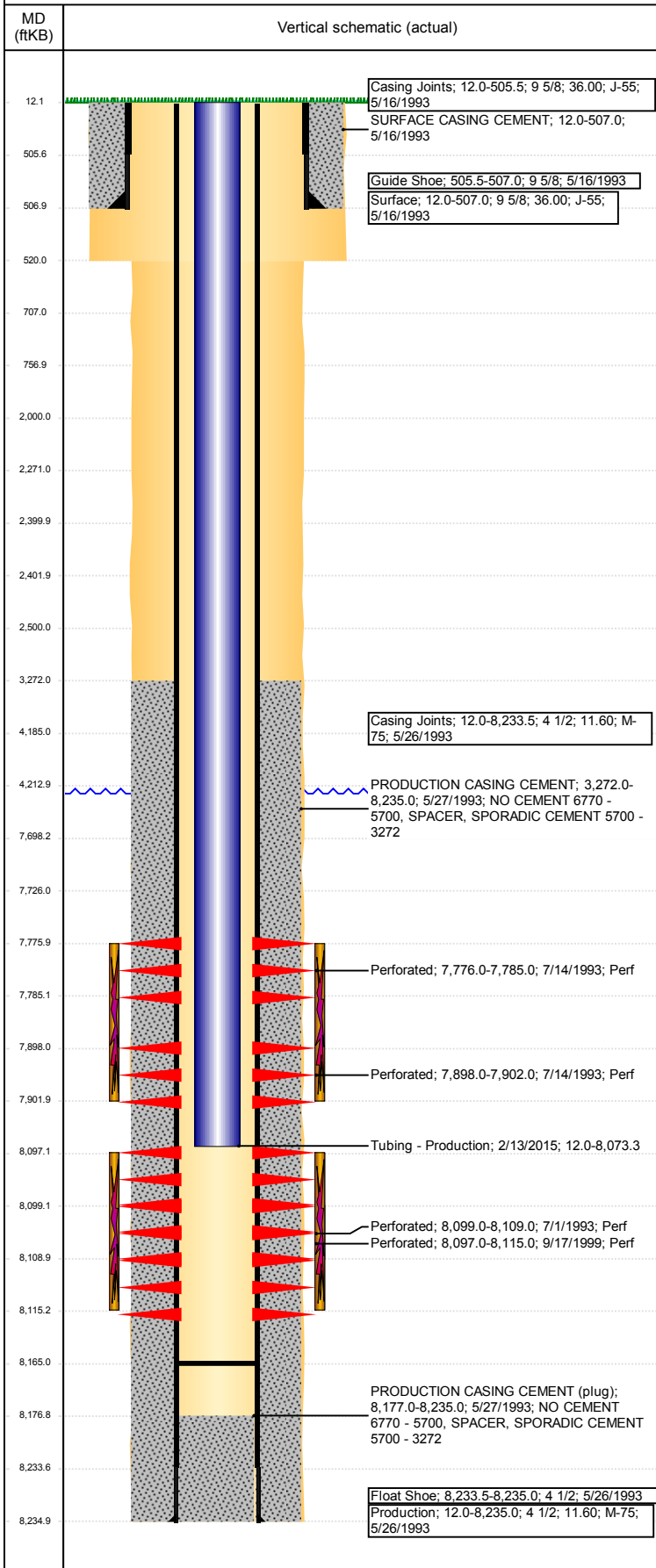
DEVIATED - ORIGINAL HOLE, 11/15/2017 7:47:22 AM



Well Header						
API 05-123-17036	Business Unit DJ BASIN		District 15		Well Config DEVIATED	
Original KB Elevation (ft) 4,738	KB - GL / MSL (ftKB) 12.00		Spud Date 5/16/1993		P & A Date	
Comment DIRECTIONAL DISCREPANCY - TD @ 8219', CSG SET @ 8235'						
Directions To Well CR 46 & CR 31, W 1/10, S INTO						
Congressional Location						
Quarter 3 NE	Quarter 4 NE	Section 16	Township 4	Twntshp N/S Dir N	Range 66	Range E/W Dir W
Bottom Hole Location						
North-South Distance (ft) 2,049.0		From N or S Line FSL		East-West Distance (ft) 1,851.0		From E or W Line FEL
Plug Back Total Depths						
Date	Depth (ftKB)	Method		Com		
7/1/1993	8,177.0	CASED HOLE LOG		DEPTH LOGGER ON CBL CLEAN OUT		
7/21/1993	8,177.0	TAG				
8/10/2009	8,164.9	TAG				
Wellbore Sections						
Section Des		Size (in)		Act Top, MD (ftKB)		Act Btm, MD (ftKB)
SURFACE		13 1/4		12		520
PRODUCTION		8 3/4		520		8,235
Zone Statuses						
Zone Name	Status Date	Status	Fluid Type	Job	Prod Method	
CODELL	7/23/1993	PR		DRILLING/CO...		
CODELL	9/23/1999	PR		RE-FRAC, 9/16...		
CODELL	11/17/2005	PR		TRI-FRAC, 10/...		
NIOBRARA	7/23/1993	PR		DRILLING/CO...		
Casing Strings						
Surface, 507.0ftKB						
Casing Description	Run Date	OD (in)	Wt/Len (l...	Grade	Top, MD (ft...	MD (ftKB)
Surface	5/16/1993	9 5/8	36.00	J-55	12.0	507.0
Production, 8,235.0ftKB						
Casing Description	Run Date	OD (in)	Wt/Len (l...	Grade	Top, MD (ft...	MD (ftKB)
Production	5/26/1993	4 1/2	11.60	M-75	12.0	8,235.0
Cement						
Description				Top Depth (ftKB)		Bottom Depth (ftKB)
SURFACE CASING CEMENT				12.0		507.0
Description				Top Depth (ftKB)		Bottom Depth (ftKB)
PRODUCTION CASING CEMENT				3,272.0		8,235.0
Description				Top Depth (ftKB)		Bottom Depth (ftKB)
PA Plug - Top of CICR				2,271.0		2,400.0
Description				Top Depth (ftKB)		Bottom Depth (ftKB)
PA Plug - Below CICR				2,402.0		2,500.0
Description				Top Depth (ftKB)		Bottom Depth (ftKB)
Shoe Plug				12.0		707.0
Description				Top Depth (ftKB)		Bottom Depth (ftKB)
Stub Plug - Attempt				707.0		757.0
Description				Top Depth (ftKB)		Bottom Depth (ftKB)
PA Plug - Annulus				2,000.0		2,500.0
Tubing Strings						
Tubing Description	Run Date	String...	ID (in)	Wt (lb/ft)	Grade	Len (ft) Set De...
Tubing	10/12/2009	2 3/8	2.00	4.70	J-55	8,069.00
Tubing Components						
Item Des	OD (in)	Wt (lb/ft)	Grade	Jts	Len (ft)	Btm (ftKB) Btm (TVD) (ftKB)
EUE 8rd Tubing	2 3/8	4.70	J-55	245	8,069.00	8,081.0
Tubing Description	Run Date	String...	ID (in)	Wt (lb/ft)	Grade	Len (ft) Set De...
Tubing - Workstring	9/20/2014	2 3/8	2.00	4.70	J-55	7,029.00
Tubing Components						
Item Des	OD (in)	Wt (lb/ft)	Grade	Jts	Len (ft)	Btm (ftKB) Btm (TVD) (ftKB)
EUE 8rd Tubing	2 3/8	4.70	J-55	204	7,024.90	7,036.9
Pump Seating	2 3/8	1.10		1	1.10	7,038.0
Nipple						
On-Off Tool	2 3/8			1	3.00	7,041.0

Well Name: UPRC 09-10F

DEVIATED - ORIGINAL HOLE, 11/15/2017 7:47:22 AM



Tubing Strings							
Tubing Description	Run Date	String...	ID (in)	Wt (lb/ft)	Grade	Len (ft)	Set De...
Tubing - Production	2/13/2015	2 3/8	2.00	4.70	J-55	8,061.27	

Tubing Components							
Item Des	OD (in)	Wt (lb/ft)	Grade	Jts	Len (ft)	Btm (ftKB)	Btm (TVD) (ftKB)
Tubing	2 3/8	4.70	J-55	246	8,059.77	8,071.8	
Pump Seating Nipple	2 3/8	1.10	X	1	1.10	8,072.9	
Notched collar	2 3/8	0.00	X	1	0.40	8,073.3	

Other In Hole				
Run Date	Des	OD (in)	Top (ftKB)	Btm (ftKB)
10/31/2017	Cement Retainer	3.99	2,400.0	2,402.0
11/14/2017	Cast Iron Bridge Plug w/ 2 SX Cement	3.99	7,698.0	7,726.0
11/14/2017	Cast Iron Bridge Plug w/ 2 SX Cement	3.99	4,185.0	4,213.0

Logs			
Date	Type	Top, MD (ftKB)	Btm, MD (ftKB)
5/27/1993	COMPENSATED NEUTRON	0.0	8,186.0
7/1/1993	CEMENT BOND	3,300.0	8,177.0

Perforation Data					
Linked Zone	Bnch/St g	Sum of Entered Shot Total	Top (ftKB)	Btm (ftKB)	Date
NIOBRARA, ORIGINAL HOLE	B	0	2,500.00	2,500.00	11/14/2017
NIOBRARA, ORIGINAL HOLE		8	7,776.00	7,785.00	7/14/1993
NIOBRARA, ORIGINAL HOLE		10	7,898.00	7,902.00	7/14/1993
CODELL, ORIGINAL HOLE		76	8,097.00	8,115.00	9/17/1999
CODELL, ORIGINAL HOLE		20	8,099.00	8,109.00	7/1/1993
Total (Sum)		114			

Stimulation Intervals		
Start Date	Primary Job Type	
7/8/1993	DRILLING/COMPLETION - ORIGINAL	
Technical Result	Tech Result Details	Tech Result Note
Comment		
Start Date	Primary Job Type	
9/20/1999	RE-FRAC	
Technical Result	Tech Result Details	Tech Result Note
Comment		
Start Date	Primary Job Type	
11/9/2005	TRI-FRAC	
Technical Result	Tech Result Details	Tech Result Note
Comment		
Start Date	Primary Job Type	
7/16/1993	DRILLING/COMPLETION - ORIGINAL	
Technical Result	Tech Result Details	Tech Result Note
Comment		