

LAND SURVEYOR'S CERTIFICATION

LAMP, RYNEARSON & ASSOCIATES, INC., OF FT. COLLINS, COLORADO HAS, IN ACCORDANCE WITH A REQUEST FROM BLANE THINGELSTAD FOR EXTRACTION OIL AND GAS, DETERMINED THE SURFACE LOCATION OF THE WELL DESIGNATED AS WAKE EAST 9 TO BE 2416' FROM THE SOUTH LINE AND 2171' FROM THE EAST LINE OF SECTION 32, TOWNSHIP 6 NORTH, RANGE 65 WEST OF THE 6TH P.M., WELD COUNTY, COLORADO.



Laine A. Landau

LAINE A. LANDAU
 COLORADO PLS 31159

DATE OF SURVEY: 07/08/2009, 02/09/2017 (SECTION CONTROL)
 DATE OF SURVEY: 02/09/2017 (WELL LOCATION)

NOTES:

- DISTANCES ARE MEASURED PERPENDICULAR TO NEAREST SECTION LINE AND ARE SHOWN ON THE SAME SIDE OF THE SECTION LINE WHERE THE WELL IS LOCATED.
- THIS MAP DOES NOT REPRESENT A MONUMENTED BOUNDARY SURVEY. SIXTEENTH CORNER LOCATIONS ARE COMPUTED, UNLESS OTHERWISE NOTED.
- BOTTOM HOLE LOCATIONS AND HORIZONTAL COMPLETION ZONE PROVIDED BY OTHERS.

BASIS OF BEARING:

THE SOUTH LINE OF THE SOUTHEAST QUARTER OF SECTION 32-T6N-R65W BEARS N85°52'57"W BETWEEN THE SOUTHEAST CORNER OF SECTION 32 MONUMENTED WITH A 2 1/2" A.C. IN R.B. STAMPED "LS 17500" AND THE SOUTH QUARTER CORNER OF SECTION 32 MONUMENTED WITH A 3 1/4" A.C. IN R.B. STAMPED "LS 28259" BASED ON THE COLORADO STATE PLANE COORDINATE SYSTEM, NORTH ZONE 0501.

ELEVATIONS ARE NAVD 88, USING THE CONUS GEOID 03 AS OBSERVED FROM GPS OBSERVATIONS



**LAMP RYNEARSON
 & ASSOCIATES**

4715 Innovation Drive 970.226.0342 | P
 Fort Collins, CO 80525 970.226.0879 | F
 www.LRA-inc.com

PROPOSED WELL LOCATION EXHIBIT
 WAKE EAST 9
 1 OF 3

DRAWN BY
 KJW
PATH/FILENAME

DATE
 11/7/17
 P:_Engineering\0215045.02 Extraction Wake East\SURVEY\DRAWINGS\EXHIBITS\0215045.02 WPOQA.dwg

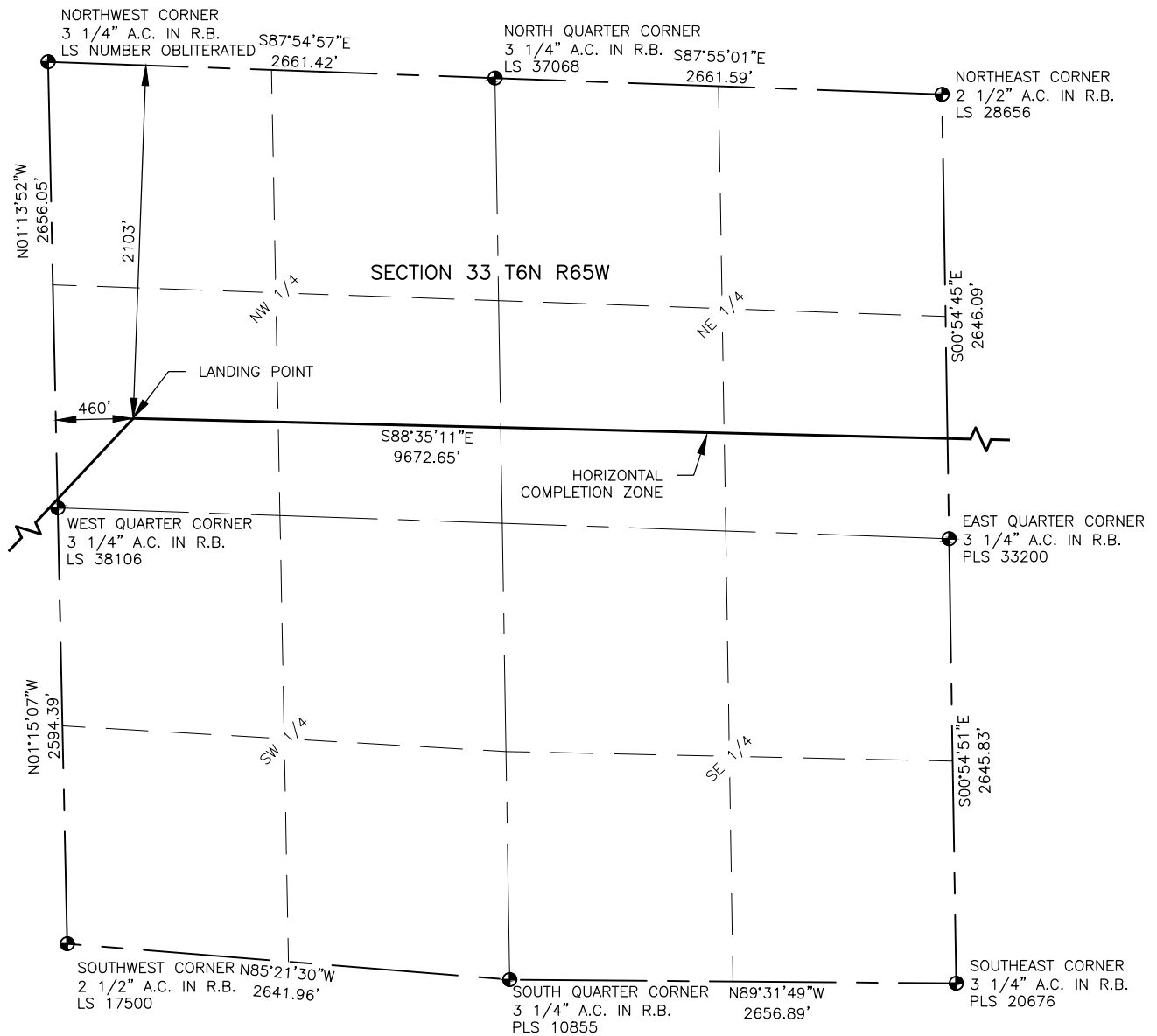
COGCC ID

PROJECT - TASK NUMBER

BOOK AND PAGE

SURFACE - LOCATION

NW1/4, SE1/4, SEC 32, T6N,
 R65W

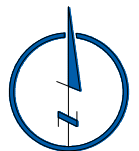


NOTES:

- DISTANCES ARE MEASURED PERPENDICULAR TO NEAREST SECTION LINE AND ARE SHOWN ON THE SAME SIDE OF THE SECTION LINE WHERE THE WELL IS LOCATED.
- THIS MAP DOES NOT REPRESENT A MONUMENTED BOUNDARY SURVEY. SIXTEENTH CORNER LOCATIONS ARE COMPUTED, UNLESS OTHERWISE NOTED.
- BOTTOM HOLE LOCATIONS AND HORIZONTAL COMPLETION ZONE PROVIDED BY OTHERS.

LEGEND

- ALIQUOT CORNER
- BOTTOM HOLE
- ⊙ PROPOSED WELL
- A.C. ALUMINUM CAP
- R.B. RANGE BOX
- REB. REBAR



0 1000

SCALE: 1"= 1000'
U.S. SURVEY FEET



LAMP RYNEARSON
& ASSOCIATES

4715 Innovation Drive 970.226.0342 | P
Fort Collins, CO 80525 970.226.0879 | F
www.LRA-inc.com

PROPOSED WELL LOCATION EXHIBIT
WAKE EAST 9
2 OF 3

DRAWN BY
KJW
PATH/FILENAME

DATE
11/7/17
P:_Engineering\0215045.02 Extraction Wake East\SURVEY\DRAWINGS\EXHIBITS\0215045.02 WPO99.dwg

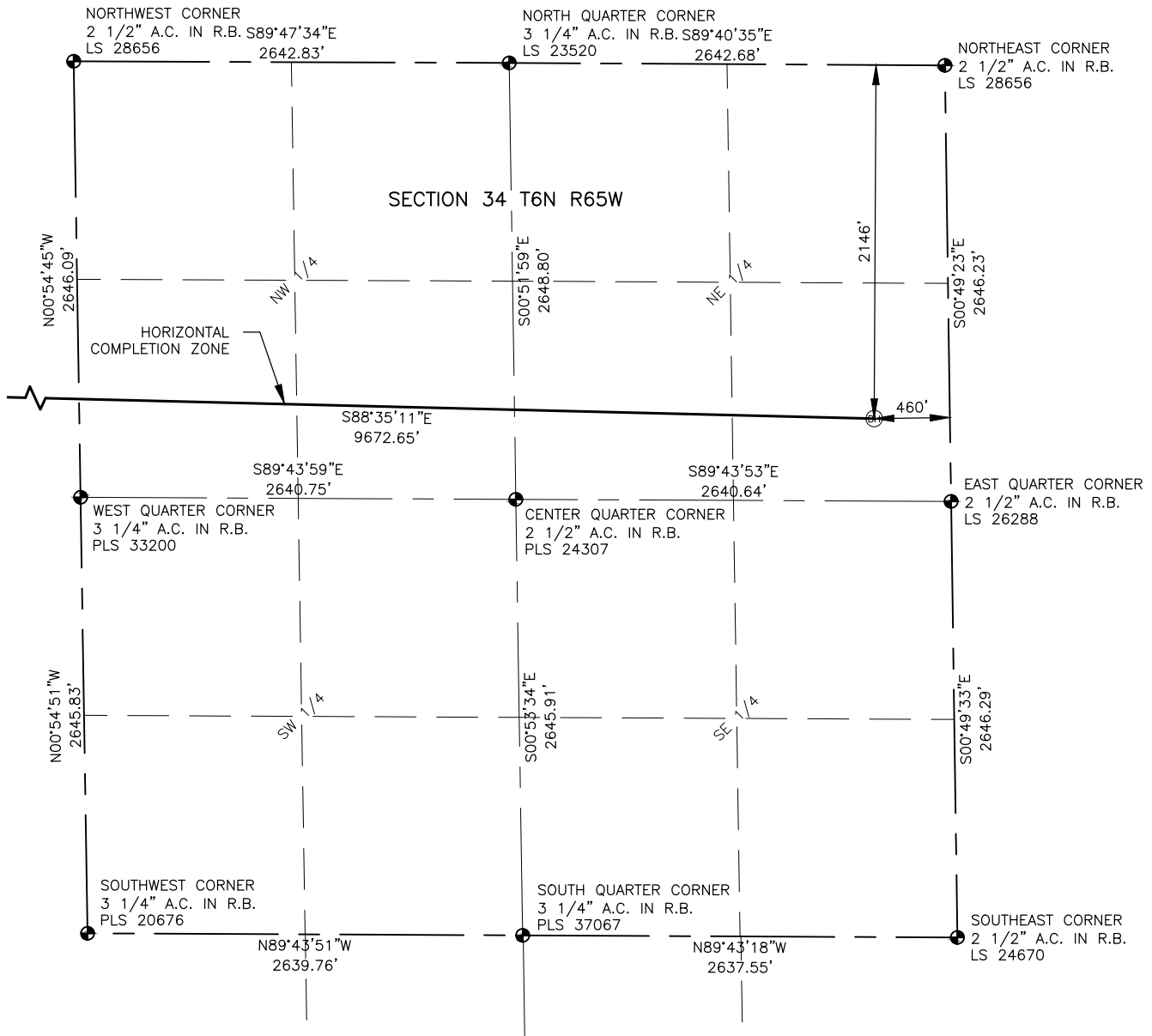
COGCC ID

PROJECT - TASK NUMBER

BOOK AND PAGE

SURFACE - LOCATION

NW1/4, SE1/4, SEC 32, T6N,
R65W

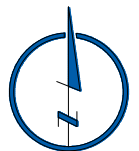


NOTES:

1. DISTANCES ARE MEASURED PERPENDICULAR TO NEAREST SECTION LINE AND ARE SHOWN ON THE SAME SIDE OF THE SECTION LINE WHERE THE WELL IS LOCATED.
2. THIS MAP DOES NOT REPRESENT A MONUMENTED BOUNDARY SURVEY. SIXTEENTH CORNER LOCATIONS ARE COMPUTED, UNLESS OTHERWISE NOTED.
3. BOTTOM HOLE LOCATIONS AND HORIZONTAL COMPLETION ZONE PROVIDED BY OTHERS.

LEGEND

- ALIQUOT CORNER
- BOTTOM HOLE
- ⊙ PROPOSED WELL
- A.C. ALUMINUM CAP
- R.B. RANGE BOX
- REB. REBAR



0 1000

SCALE: 1" = 1000'
U.S. SURVEY FEET



LAMP RYNEARSON
& ASSOCIATES

4715 Innovation Drive 970.226.0342 | P
Fort Collins, CO 80525 970.226.0879 | F
www.LRA-inc.com

PROPOSED WELL LOCATION EXHIBIT
WAKE EAST 9
3 OF 3

DRAWN BY
KJW
PATH/FILENAME

DATE
11/7/17
P:_Engineering\0215045.02 Extraction Wake East\SURVEY\DRAWINGS\EXHIBITS\0215045.02 WPOQC.dwg

COGCC ID

PROJECT - TASK NUMBER

BOOK AND PAGE

SURFACE - LOCATION

NW1/4, SE1/4, SEC 32, T6N,
R65W