

LAND SURVEYOR'S CERTIFICATION

LAMP, RYNEARSON & ASSOCIATES, INC., OF FT. COLLINS, COLORADO HAS, IN ACCORDANCE WITH A REQUEST FROM BLANE THINGELSTAD FOR EXTRACTION OIL AND GAS, DETERMINED THE SURFACE LOCATION OF THE WELL DESIGNATED AS WAKE EAST 7 TO BE 2447' FROM THE SOUTH LINE AND 2170' FROM THE EAST LINE OF SECTION 32, TOWNSHIP 6 NORTH, RANGE 65 WEST OF THE 6TH P.M., WELD COUNTY, COLORADO.

NOTES:

- DISTANCES ARE MEASURED PERPENDICULAR TO NEAREST SECTION LINE AND ARE SHOWN ON THE SAME SIDE OF THE SECTION LINE WHERE THE WELL IS LOCATED.
- THIS MAP DOES NOT REPRESENT A MONUMENTED BOUNDARY SURVEY. SIXTEENTH CORNER LOCATIONS ARE COMPUTED, UNLESS OTHERWISE NOTED.
- BOTTOM HOLE LOCATIONS AND HORIZONTAL COMPLETION ZONE PROVIDED BY OTHERS.

BASIS OF BEARING:

THE SOUTH LINE OF THE SOUTHEAST QUARTER OF SECTION 32-T6N-R65W BEARS N85°52'57"W BETWEEN THE SOUTHEAST CORNER OF SECTION 32 MONUMENTED WITH A 2 1/2" A.C. IN R.B. STAMPED "LS 17500" AND THE SOUTH QUARTER CORNER OF SECTION 32 MONUMENTED WITH A 3 1/4" A.C. IN R.B. STAMPED "LS 28259" BASED ON THE COLORADO STATE PLANE COORDINATE SYSTEM, NORTH ZONE 0501.

ELEVATIONS ARE NAVD 88, USING THE CONUS GEOID 03 AS OBSERVED FROM GPS OBSERVATIONS



Laine A. Landau

LAINE A. LANDAU
 COLORADO PLS 31159

DATE OF SURVEY: 07/08/2009, 02/09/2017 (SECTION CONTROL)
 DATE OF SURVEY: 02/09/2017 (WELL LOCATION)



**LAMP RYNEARSON
 & ASSOCIATES**

4715 Innovation Drive 970.226.0342 | P
 Fort Collins, CO 80525 970.226.0879 | F
 www.LRA-inc.com

PROPOSED WELL LOCATION EXHIBIT
 WAKE EAST 7
 1 OF 3

DRAWN BY
 KJW
PATH/FILENAME

DATE
 11/7/17
 P:_Engineering\0215045.02 Extraction Wake East\SURVEY\DRAWINGS\EXHIBITS\0215045.02 WPOZA.dwg

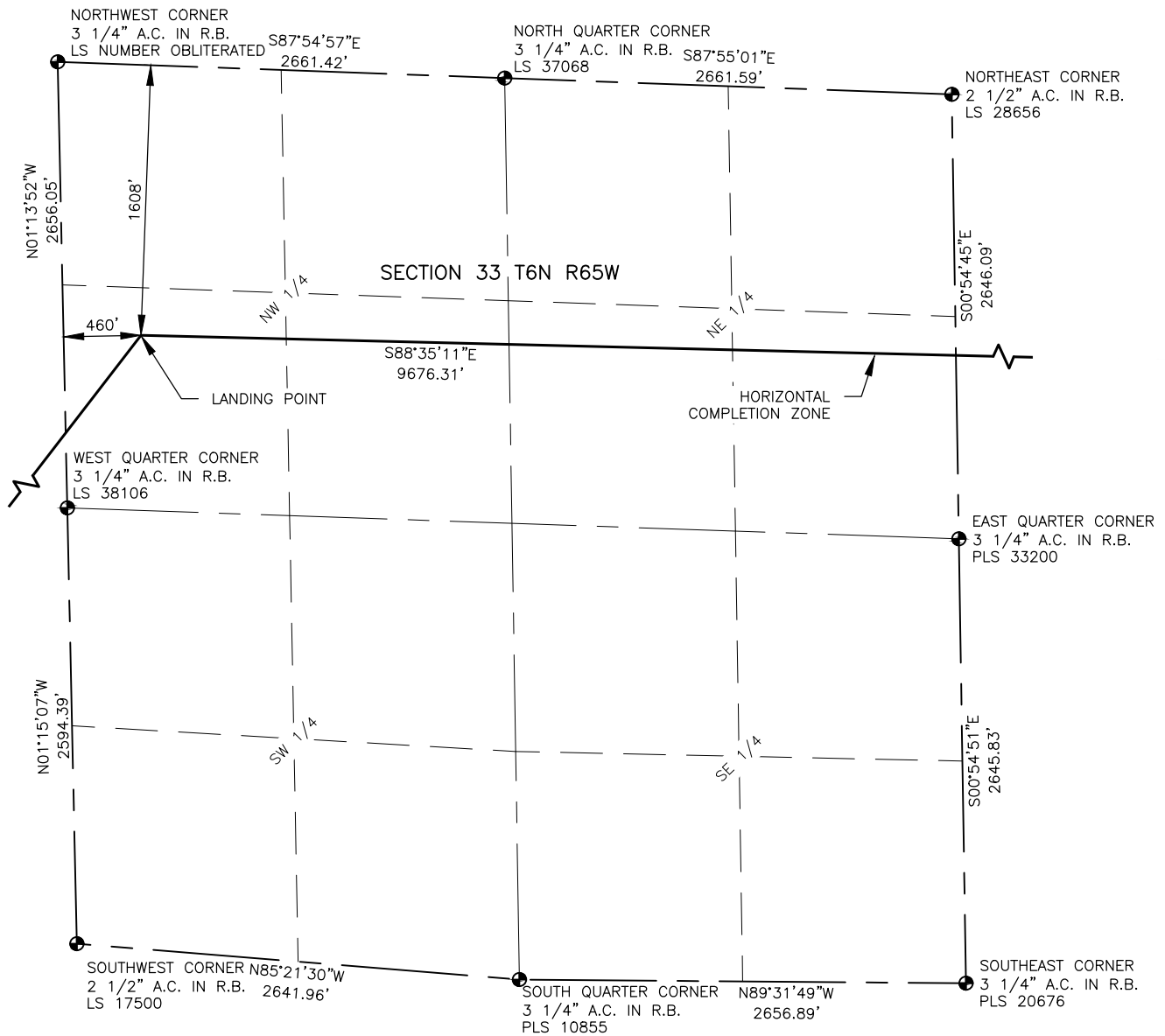
COGCC ID

PROJECT - TASK NUMBER

BOOK AND PAGE

SURFACE - LOCATION

NW1/4, SE1/4, SEC 32, T6N,
 R65W

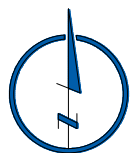


NOTES:

- DISTANCES ARE MEASURED PERPENDICULAR TO NEAREST SECTION LINE AND ARE SHOWN ON THE SAME SIDE OF THE SECTION LINE WHERE THE WELL IS LOCATED.
- THIS MAP DOES NOT REPRESENT A MONUMENTED BOUNDARY SURVEY. SIXTEENTH CORNER LOCATIONS ARE COMPUTED, UNLESS OTHERWISE NOTED.
- BOTTOM HOLE LOCATIONS AND HORIZONTAL COMPLETION ZONE PROVIDED BY OTHERS.

LEGEND

- ALIQUOT CORNER
- BOTTOM HOLE
- ⊙ PROPOSED WELL
- A.C. ALUMINUM CAP
- R.B. RANGE BOX
- REB. REBAR



0 1000

SCALE: 1"= 1000'
U.S. SURVEY FEET



LAMP RYNEARSON
& ASSOCIATES

4715 Innovation Drive 970.226.0342 | P
Fort Collins, CO 80525 970.226.0879 | F
www.LRA-inc.com

PROPOSED WELL LOCATION EXHIBIT
WAKE EAST 7
2 OF 3

DRAWN BY
KJW
PATH/FILENAME

DATE
11/7/17
P:_Engineering\0215045.02 Extraction Wake East\SURVEY\DRAWINGS\EXHIBITS\0215045.02 WPO7R.dwg

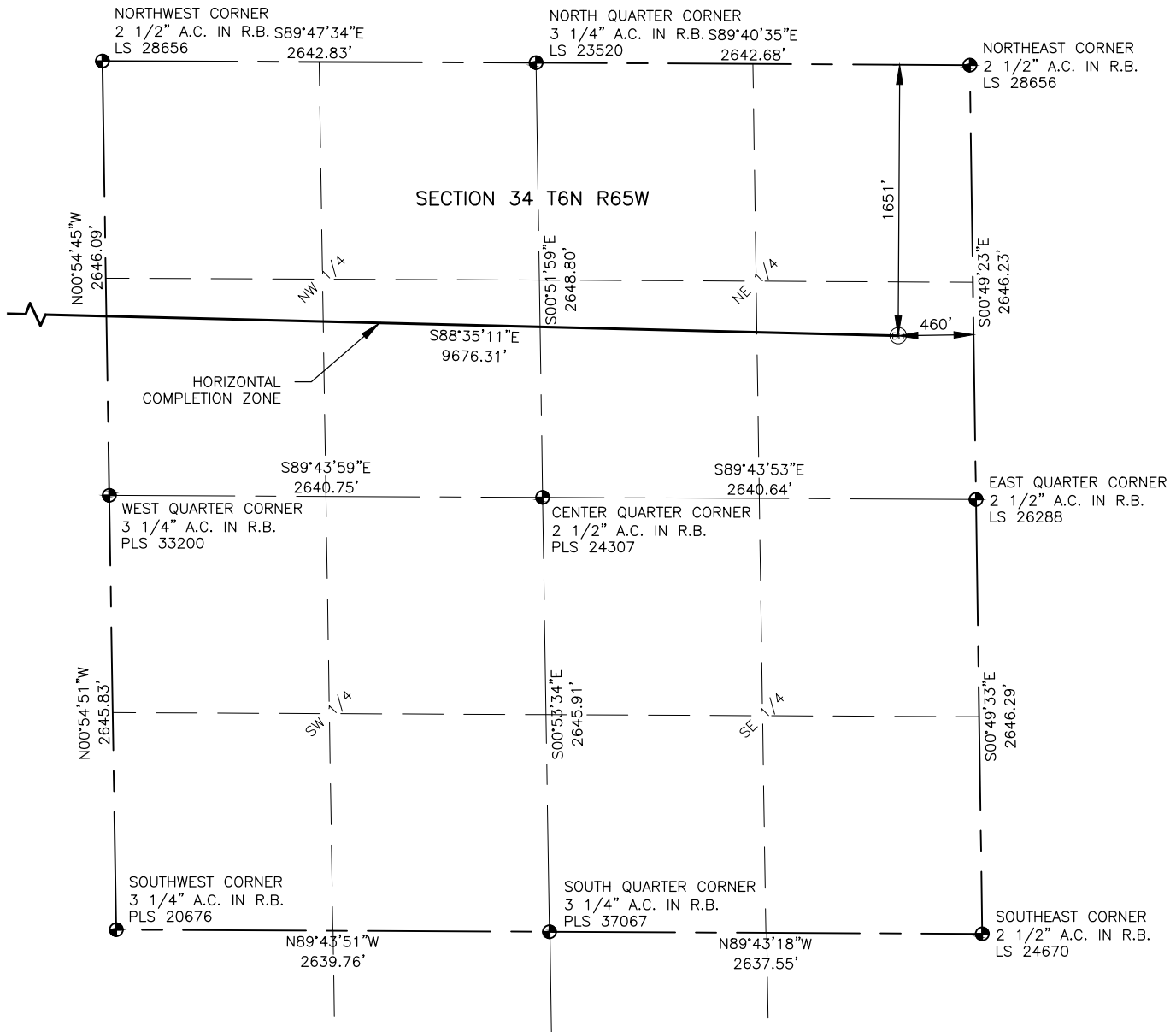
COGCC ID

PROJECT - TASK NUMBER

BOOK AND PAGE

SURFACE - LOCATION

NW1/4, SE1/4, SEC 32, T6N,
R65W

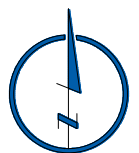


NOTES:

- DISTANCES ARE MEASURED PERPENDICULAR TO NEAREST SECTION LINE AND ARE SHOWN ON THE SAME SIDE OF THE SECTION LINE WHERE THE WELL IS LOCATED.
- THIS MAP DOES NOT REPRESENT A MONUMENTED BOUNDARY SURVEY. SIXTEENTH CORNER LOCATIONS ARE COMPUTED, UNLESS OTHERWISE NOTED.
- BOTTOM HOLE LOCATIONS AND HORIZONTAL COMPLETION ZONE PROVIDED BY OTHERS.

LEGEND

- ALIQUOT CORNER
- BOTTOM HOLE
- ⊙ PROPOSED WELL
- A.C. ALUMINUM CAP
- R.B. RANGE BOX
- REB. REBAR



0 1000

SCALE: 1" = 1000'
U.S. SURVEY FEET



LAMP RYNEARSON
& ASSOCIATES

4715 Innovation Drive 970.226.0342 | P
Fort Collins, CO 80525 970.226.0879 | F
www.LRA-inc.com

PROPOSED WELL LOCATION EXHIBIT
WAKE EAST 7
3 OF 3

DRAWN BY
KJW
PATH/FILENAME

DATE
11/7/17
P:_Engineering\0215045.02 Extraction Wake East\SURVEY\DRAWINGS\EXHIBITS\0215045.02
WP07C.dwg

COGCC ID

PROJECT - TASK NUMBER

BOOK AND PAGE

SURFACE - LOCATION

NW1/4, SE1/4, SEC 32, T6N,
R65W