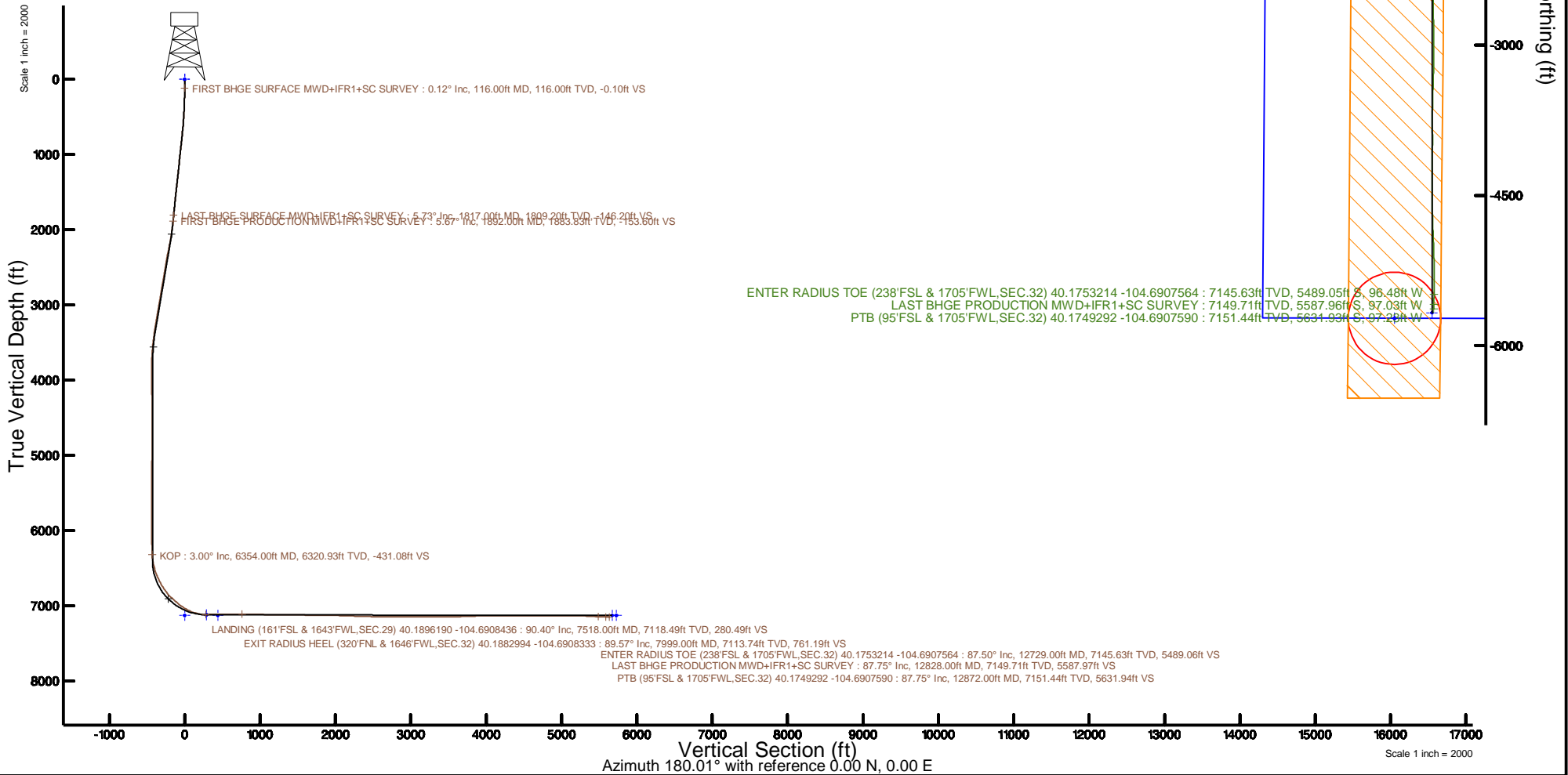


KERR-MCGEE OIL & GAS ONSHORE LP (WA)

Location: COLORADO Slot: SLOT#44 RW 35N-32HZ(441'FSL & 1764'FWL,SEC.29)
 Field: WELD COUNTY (UTM/TRUE NORTH) Well: RW 35N-32HZ
 Facility: SEC.29-T3N-R65W Wellbore: RW 35N-32HZ PWB

Plot reference wellpath is RW 35N-32HZ PWP Rev-C.0	Grid System: NAD83 / UTM Zone 13 North, US feet
True vertical depths are referenced to Xtreme 22 (17) (RT)	* = Wellpath was transformed from a different geodetic datum
Measured depths are referenced to Xtreme 22 (17) (RT)	North Reference: True north
Xtreme 22 (17) (RT) to Mean Sea Level: 4903 feet	Scale: True distance
Mean Sea Level to Mud line (At Slot: SLOT#44 RW 35N-32HZ(441'FSL & 1764'FWL,SEC.29)): 0 feet	Depths are in feet
Coordinates are in feet referenced to Slot	Created by: painsetr on 2017-09-05
	Database: WA_DEN_Anadarko_Defn



REFERENCE WELLPATH IDENTIFICATION			
Operator	KERR-MCGEE OIL & GAS ONSHORE LP (WA)	Slot	SLOT#44 RW 35N-32HZ(441'FSL & 1764'FWL,SEC.29)
Area	COLORADO	Well	RW 35N-32HZ
Field	WELD COUNTY (UTM/TRUE NORTH)	Wellbore	RW 35N-32HZ AWB
Facility	SEC.29-T3N-R65W		

REPORT SETUP INFORMATION			
Projection System	NAD83 / UTM Zone 13 North, US feet	Software System	WellArchitect® 5.0
North Reference	True	User	Painsetr
Scale	0.999609	Report Generated	9/5/2017 at 2:09 PM
Convergence at slot	0.20° East	Database/Source file	WA_DEN_Anadarko_Defn/RW_35N-32HZ_AWP.xml

WELLPATH LOCATION						
	Local coordinates		Grid coordinates		Geographic coordinates	
	North[ft]	East[ft]	Easting[US ft]	Northing[US ft]	Latitude	Longitude
Slot Location	-79.12	943.70	1726876.13	14596213.65	40°11'25.400"N	104°41'25.480"W
Facility Reference Pt			1725932.54	14596289.48	40°11'26.182"N	104°41'37.640"W
Field Reference Pt			1698235.31	14552047.82	40°04'09.600"N	104°47'36.000"W

WELLPATH DATUM			
Calculation method	Minimum curvature	Xtreme 22 (17') (RT) to Facility Vertical Datum	4903.00ft
Horizontal Reference Pt	Slot	Xtreme 22 (17') (RT) to Mean Sea Level	4903.00ft
Vertical Reference Pt	Xtreme 22 (17') (RT)	Xtreme 22 (17') (RT) to Mud Line at Slot (SLOT#44 RW 35N-32HZ(441'FSL & 1764'FWL,SEC.29))	4903.00ft
MD Reference Pt	Xtreme 22 (17') (RT)	Section Origin	N 0.00, E 0.00 ft
Field Vertical Reference	Mean Sea Level	Section Azimuth	180.01°

REFERENCE WELLPATH IDENTIFICATION			
Operator	KERR-MCGEE OIL & GAS ONSHORE LP (WA)	Slot	SLOT#44 RW 35N-32HZ(441'FSL & 1764'FWL,SEC.29)
Area	COLORADO	Well	RW 35N-32HZ
Field	WELD COUNTY (UTM/TRUE NORTH)	Wellbore	RW 35N-32HZ AWB
Facility	SEC.29-T3N-R65W		

WELLPATH DATA (154 stations) † = interpolated/extrapolated station

MD (ft)	Inclination (°)	Azimuth (°)	TVD (ft)	Vert Sect (ft)	North (ft)	East (ft)	Grid East (US ft)	Grid North (US ft)	Latitude	Longitude	DLS (°/100ft)	Comments
0.00†	0.000	343.800	0.00	0.00	0.00	0.00	1726876.13	14596213.65	40°11'25.400"N	104°41'25.480"W	0.00	
17.00	0.000	343.800	17.00	0.00	0.00	0.00	1726876.13	14596213.65	40°11'25.400"N	104°41'25.480"W	0.00	
116.00	0.120	343.800	116.00	-0.10	0.10	-0.03	1726876.10	14596213.75	40°11'25.401"N	104°41'25.480"W	0.12	FIRST BHGE SURFACE MWD+IFR1+SC SURVEY
211.00	0.920	5.390	211.00	-0.95	0.95	0.01	1726876.14	14596214.60	40°11'25.409"N	104°41'25.480"W	0.85	
301.00	1.490	352.280	300.98	-2.83	2.83	-0.07	1726876.04	14596216.48	40°11'25.428"N	104°41'25.481"W	0.70	
392.00	3.060	355.990	391.90	-6.43	6.43	-0.40	1726875.70	14596220.07	40°11'25.464"N	104°41'25.485"W	1.73	
483.00	3.640	348.960	482.75	-11.69	11.69	-1.13	1726874.96	14596225.32	40°11'25.515"N	104°41'25.495"W	0.78	
574.00	4.370	350.160	573.52	-17.94	17.94	-2.27	1726873.79	14596231.57	40°11'25.577"N	104°41'25.509"W	0.81	
665.00	5.560	346.590	664.18	-25.64	25.64	-3.89	1726872.15	14596239.26	40°11'25.653"N	104°41'25.530"W	1.35	
752.00	6.360	339.220	750.71	-34.25	34.25	-6.57	1726869.44	14596247.86	40°11'25.738"N	104°41'25.565"W	1.27	
839.00	6.000	336.770	837.20	-42.93	42.93	-10.08	1726865.91	14596256.52	40°11'25.824"N	104°41'25.610"W	0.51	
927.00	6.800	341.730	924.66	-52.10	52.11	-13.52	1726862.43	14596265.68	40°11'25.915"N	104°41'25.654"W	1.10	
1015.00	6.650	339.930	1012.05	-61.84	61.84	-16.91	1726859.01	14596275.40	40°11'26.011"N	104°41'25.698"W	0.29	
1102.00	6.570	337.210	1098.47	-71.16	71.16	-20.56	1726855.33	14596284.70	40°11'26.103"N	104°41'25.745"W	0.37	
1189.00	6.500	340.610	1184.91	-80.39	80.39	-24.13	1726851.73	14596293.92	40°11'26.194"N	104°41'25.791"W	0.45	
1277.00	6.640	347.190	1272.33	-90.05	90.05	-26.91	1726848.92	14596303.57	40°11'26.290"N	104°41'25.827"W	0.87	
1364.00	6.490	345.890	1358.76	-99.72	99.73	-29.22	1726846.57	14596313.23	40°11'26.385"N	104°41'25.857"W	0.24	
1452.00	6.360	344.250	1446.21	-109.24	109.24	-31.76	1726844.00	14596322.73	40°11'26.480"N	104°41'25.889"W	0.26	
1539.00	6.260	346.110	1532.68	-118.48	118.48	-34.20	1726841.53	14596331.96	40°11'26.571"N	104°41'25.921"W	0.26	
1627.00	6.180	345.590	1620.16	-127.72	127.73	-36.53	1726839.16	14596341.19	40°11'26.662"N	104°41'25.951"W	0.11	
1714.00	5.580	342.170	1706.70	-136.29	136.29	-38.99	1726836.67	14596349.74	40°11'26.747"N	104°41'25.982"W	0.80	
1802.00	5.760	350.820	1794.28	-144.72	144.72	-41.01	1726834.63	14596358.17	40°11'26.830"N	104°41'26.008"W	0.99	
1817.00	5.730	351.640	1809.20	-146.20	146.21	-41.24	1726834.40	14596359.65	40°11'26.845"N	104°41'26.011"W	0.58	LAST BHGE SURFACE MWD+IFR1+SC SURVEY
1892.00	5.670	355.020	1883.83	-153.60	153.60	-42.10	1726833.51	14596367.04	40°11'26.918"N	104°41'26.023"W	0.45	FIRST BHGE PRODUCTION MWD+IFR1+SC SURVEY
1980.00	7.270	1.410	1971.27	-163.49	163.50	-42.34	1726833.23	14596376.93	40°11'27.016"N	104°41'26.026"W	1.99	
2067.00	8.830	1.750	2057.41	-175.67	175.68	-42.00	1726833.53	14596389.11	40°11'27.136"N	104°41'26.021"W	1.79	
2155.00	10.380	357.150	2144.17	-190.34	190.35	-42.19	1726833.29	14596403.77	40°11'27.281"N	104°41'26.024"W	1.96	
2242.00	11.350	352.500	2229.61	-206.66	206.66	-43.70	1726831.73	14596420.07	40°11'27.442"N	104°41'26.043"W	1.50	
2330.00	10.670	351.920	2315.99	-223.31	223.31	-45.98	1726829.39	14596436.71	40°11'27.607"N	104°41'26.072"W	0.78	
2418.00	10.700	344.750	2402.47	-239.26	239.26	-49.27	1726826.04	14596452.64	40°11'27.764"N	104°41'26.115"W	1.51	
2505.00	9.850	342.570	2488.08	-254.15	254.15	-53.62	1726821.64	14596467.51	40°11'27.912"N	104°41'26.171"W	1.07	
2593.00	10.410	338.210	2574.70	-268.71	268.72	-58.83	1726816.39	14596482.05	40°11'28.055"N	104°41'26.238"W	1.08	
2680.00	9.720	335.680	2660.37	-282.70	282.71	-64.77	1726810.40	14596496.02	40°11'28.194"N	104°41'26.315"W	0.94	
2768.00	10.590	341.990	2746.99	-297.16	297.17	-70.33	1726804.79	14596510.45	40°11'28.337"N	104°41'26.386"W	1.60	
2855.00	10.400	340.980	2832.53	-312.19	312.20	-75.36	1726799.71	14596525.46	40°11'28.485"N	104°41'26.451"W	0.30	
2942.00	10.130	340.800	2918.14	-326.84	326.85	-80.44	1726794.58	14596540.08	40°11'28.630"N	104°41'26.516"W	0.31	
3030.00	11.050	338.910	3004.64	-342.01	342.02	-86.02	1726788.95	14596555.23	40°11'28.780"N	104°41'26.588"W	1.12	
3117.00	10.540	338.250	3090.10	-357.18	357.19	-91.97	1726782.95	14596570.38	40°11'28.930"N	104°41'26.665"W	0.60	
3205.00	9.810	345.710	3176.72	-371.92	371.93	-96.80	1726778.07	14596585.09	40°11'29.075"N	104°41'26.727"W	1.71	
3229.00	9.790	346.030	3200.37	-375.89	375.90	-97.80	1726777.06	14596589.05	40°11'29.115"N	104°41'26.740"W	0.24	
3317.00	9.360	345.640	3287.14	-390.08	390.09	-101.38	1726773.43	14596603.23	40°11'29.255"N	104°41'26.786"W	0.49	
3404.00	8.310	344.630	3373.11	-402.99	403.00	-104.80	1726769.97	14596616.12	40°11'29.382"N	104°41'26.830"W	1.22	
3492.00	6.920	344.100	3460.33	-414.22	414.24	-107.94	1726766.79	14596627.34	40°11'29.493"N	104°41'26.871"W	1.58	
3580.00	6.040	339.280	3547.77	-423.65	423.66	-111.03	1726763.67	14596636.75	40°11'29.587"N	104°41'26.911"W	1.17	
3667.00	3.930	336.950	3634.44	-430.68	430.69	-113.81	1726760.86	14596643.77	40°11'29.656"N	104°41'26.947"W	2.44	

REFERENCE WELLPATH IDENTIFICATION			
Operator	KERR-MCGEE OIL & GAS ONSHORE LP (WA)	Slot	SLOT#44 RW 35N-32HZ(441'FSL & 1764'FWL,SEC.29)
Area	COLORADO	Well	RW 35N-32HZ
Field	WELD COUNTY (UTM/TRUE NORTH)	Wellbore	RW 35N-32HZ AWB
Facility	SEC.29-T3N-R65W		

WELLPATH DATA (154 stations) † = interpolated/extrapolated station												
MD (ft)	Inclination (°)	Azimuth (°)	TVD (ft)	Vert Sect (ft)	North (ft)	East (ft)	Grid East (US ft)	Grid North (US ft)	Latitude	Longitude	DLS (°/100ft)	Comments
3756.00	3.370	331.230	3723.26	-435.78	435.79	-116.27	1726758.39	14596648.86	40°11'29.706"N	104°41'26.978"W	0.75	
3843.00	1.790	320.250	3810.17	-439.06	439.08	-118.37	1726756.28	14596652.13	40°11'29.739"N	104°41'27.005"W	1.89	
3931.00	0.990	201.600	3898.15	-439.41	439.43	-119.53	1726755.12	14596652.48	40°11'29.742"N	104°41'27.020"W	2.76	
4019.00	1.350	205.050	3986.13	-437.77	437.78	-120.24	1726754.41	14596650.83	40°11'29.726"N	104°41'27.029"W	0.42	
4105.00	0.900	223.830	4072.12	-436.36	436.37	-121.14	1726753.51	14596649.42	40°11'29.712"N	104°41'27.041"W	0.67	
4192.00	1.540	222.880	4159.10	-435.01	435.03	-122.41	1726752.25	14596648.07	40°11'29.699"N	104°41'27.057"W	0.74	
4280.00	0.400	134.960	4247.08	-433.93	433.94	-123.00	1726751.67	14596646.99	40°11'29.688"N	104°41'27.065"W	1.79	
4367.00	0.210	141.760	4334.08	-433.59	433.60	-122.68	1726751.98	14596646.65	40°11'29.688"N	104°41'27.061"W	0.22	
4455.00	0.220	142.430	4422.08	-433.33	433.34	-122.48	1726752.19	14596646.39	40°11'29.682"N	104°41'27.058"W	0.01	
4542.00	0.250	115.270	4509.08	-433.11	433.13	-122.21	1726752.46	14596646.17	40°11'29.680"N	104°41'27.055"W	0.13	
4630.00	0.040	308.890	4597.08	-433.05	433.07	-122.06	1726752.61	14596646.11	40°11'29.680"N	104°41'27.053"W	0.33	
4717.00	0.060	227.310	4684.08	-433.04	433.05	-122.11	1726752.55	14596646.10	40°11'29.679"N	104°41'27.054"W	0.08	
4805.00	0.280	164.490	4772.08	-432.80	432.81	-122.09	1726752.58	14596645.86	40°11'29.677"N	104°41'27.053"W	0.29	
4892.00	0.550	160.050	4859.08	-432.20	432.22	-121.89	1726752.78	14596645.27	40°11'29.671"N	104°41'27.051"W	0.31	
4980.00	1.450	45.670	4947.07	-432.59	432.60	-120.95	1726753.72	14596645.65	40°11'29.675"N	104°41'27.039"W	1.99	
5067.00	1.220	50.440	5034.05	-433.95	433.96	-119.45	1726755.21	14596647.01	40°11'29.688"N	104°41'27.019"W	0.29	
5155.00	1.160	55.360	5122.03	-435.05	435.06	-117.99	1726756.66	14596648.12	40°11'29.699"N	104°41'27.000"W	0.13	
5242.00	0.860	54.110	5209.01	-435.93	435.94	-116.74	1726757.91	14596649.01	40°11'29.708"N	104°41'26.984"W	0.35	
5330.00	0.430	37.360	5297.01	-436.58	436.59	-116.01	1726758.65	14596649.66	40°11'29.714"N	104°41'26.975"W	0.53	
5417.00	0.170	9.950	5384.01	-436.97	436.98	-115.78	1726758.87	14596650.05	40°11'29.718"N	104°41'26.972"W	0.33	
5505.00	0.160	302.940	5472.01	-437.16	437.18	-115.87	1726758.78	14596650.24	40°11'29.720"N	104°41'26.973"W	0.21	
5592.00	0.200	230.540	5559.01	-437.13	437.15	-116.08	1726758.57	14596650.21	40°11'29.720"N	104°41'26.976"W	0.25	
5680.00	0.590	223.090	5647.00	-436.70	436.72	-116.51	1726758.14	14596649.78	40°11'29.716"N	104°41'26.981"W	0.45	
5767.00	0.090	146.190	5734.00	-436.32	436.33	-116.78	1726757.87	14596649.40	40°11'29.712"N	104°41'26.985"W	0.66	
5854.00	0.400	166.180	5821.00	-435.97	435.98	-116.67	1726757.98	14596649.05	40°11'29.708"N	104°41'26.983"W	0.36	
5941.00	0.160	37.630	5908.00	-435.77	435.78	-116.52	1726758.13	14596648.85	40°11'29.706"N	104°41'26.981"W	0.59	
6029.00	0.250	89.260	5996.00	-435.87	435.88	-116.26	1726758.40	14596648.95	40°11'29.707"N	104°41'26.978"W	0.22	
6117.00	0.140	135.630	6084.00	-435.80	435.81	-115.99	1726758.67	14596648.87	40°11'29.707"N	104°41'26.975"W	0.21	
6204.00	1.070	163.300	6170.99	-434.94	434.95	-115.68	1726758.98	14596648.02	40°11'29.698"N	104°41'26.971"W	1.09	
6292.00	1.230	154.470	6258.98	-433.30	433.31	-115.04	1726759.63	14596646.39	40°11'29.682"N	104°41'26.962"W	0.27	
6354.00†	3.004	176.457	6320.93	-431.08	431.09	-114.65	1726760.02	14596644.17	40°11'29.660"N	104°41'26.957"W	3.10	KOP
6379.00	3.760	179.290	6345.89	-429.61	429.62	-114.60	1726760.08	14596642.69	40°11'29.645"N	104°41'26.957"W	3.10	
6467.00	12.190	183.370	6432.96	-417.42	417.44	-115.11	1726759.61	14596630.51	40°11'29.525"N	104°41'26.963"W	9.60	
6555.00	16.050	185.820	6518.28	-396.04	396.05	-116.89	1726757.90	14596609.13	40°11'29.314"N	104°41'26.986"W	4.44	
6642.00	22.510	176.090	6600.38	-367.42	367.43	-116.98	1726757.92	14596580.53	40°11'29.031"N	104°41'26.987"W	8.27	
6730.00	26.680	177.300	6680.38	-330.87	330.88	-114.90	1726760.12	14596543.99	40°11'28.670"N	104°41'26.961"W	4.77	
6817.00	33.000	184.230	6755.83	-287.67	287.68	-115.72	1726759.45	14596500.81	40°11'28.243"N	104°41'26.971"W	8.26	
6904.00	39.230	186.270	6826.08	-236.65	236.66	-120.48	1726754.87	14596449.79	40°11'27.739"N	104°41'27.032"W	7.29	
6992.00	44.150	179.110	6891.81	-178.27	178.28	-123.05	1726752.51	14596391.43	40°11'27.162"N	104°41'27.066"W	7.77	
7079.00	49.660	176.740	6951.23	-114.82	114.83	-120.69	1726755.09	14596328.01	40°11'26.535"N	104°41'27.035"W	6.64	
7167.00	54.650	174.760	7005.21	-45.55	45.56	-115.50	1726760.51	14596258.79	40°11'25.850"N	104°41'26.968"W	5.94	
7254.00	61.520	179.320	7051.19	28.13	-28.12	-111.80	1726764.47	14596185.15	40°11'25.122"N	104°41'26.921"W	9.06	
7342.00	70.600	181.480	7086.87	108.47	-108.46	-112.42	1726764.14	14596104.84	40°11'24.328"N	104°41'26.929"W	10.56	
7430.00	78.700	183.760	7110.15	193.16	-193.15	-116.32	1726760.52	14596020.17	40°11'23.491"N	104°41'26.979"W	9.54	
7518.00	90.400	182.160	7118.49	280.49	-280.48	-120.83	1726756.33	14595932.86	40°11'22.628"N	104°41'27.037"W	13.42	LANDING (161'FSL & 1643'FWL,SEC.29) 40.1896190 -104.6908436

REFERENCE WELLPATH IDENTIFICATION				
Operator	KERR-MCGEE OIL & GAS ONSHORE LP (WA)		Slot	SLOT#44 RW 35N-32HZ(441'FSL & 1764'FWL,SEC.29)
Area	COLORADO		Well	RW 35N-32HZ
Field	WELD COUNTY (UTM/TRUE NORTH)		Wellbore	RW 35N-32HZ AWB
Facility	SEC.29-T3N-R65W			

WELLPATH DATA (154 stations) † = interpolated/extrapolated station												
MD (ft)	Inclination (°)	Azimuth (°)	TVD (ft)	Vert Sect (ft)	North (ft)	East (ft)	Grid East (US ft)	Grid North (US ft)	Latitude	Longitude	DLS (°/100ft)	Comments
7605.00	92.370	181.580	7116.39	367.42	-367.40	-123.67	1726753.79	14595845.96	40°11'21.769"N	104°41'27.073"W	2.36	
7693.00	91.260	180.690	7113.60	455.35	-455.34	-125.41	1726752.36	14595758.05	40°11'20.900"N	104°41'27.096"W	1.62	
7780.00	89.660	179.500	7112.90	542.35	-542.33	-125.55	1726752.52	14595671.09	40°11'20.041"N	104°41'27.098"W	2.29	
7868.00	89.320	177.900	7113.69	630.32	-630.30	-123.56	1726754.82	14595583.16	40°11'19.171"N	104°41'27.072"W	1.86	
7955.00	90.550	177.460	7113.78	717.24	-717.23	-120.03	1726758.64	14595496.28	40°11'18.312"N	104°41'27.027"W	1.50	
7999.00†	89.570	177.150	7113.74	761.19	-761.18	-117.97	1726760.86	14595452.36	40°11'17.878"N	104°41'27.000"W	2.34	EXIT RADIUS HEEL (320'FNL & 1646'FWL,SEC.32) 40.1882994 -104.6908333
8043.00	88.590	176.840	7114.45	805.13	-805.11	-115.66	1726763.32	14595408.45	40°11'17.444"N	104°41'26.970"W	2.34	
8130.00	89.540	176.700	7115.86	891.98	-891.96	-110.76	1726768.52	14595321.65	40°11'16.586"N	104°41'26.907"W	1.10	
8218.00	88.920	178.690	7117.05	979.89	-979.88	-107.22	1726772.37	14595233.78	40°11'15.717"N	104°41'26.862"W	2.37	
8305.00	89.750	178.410	7118.06	1066.86	-1066.85	-105.02	1726774.87	14595146.86	40°11'14.857"N	104°41'26.833"W	1.01	
8393.00	88.800	179.760	7119.17	1154.83	-1154.82	-103.61	1726776.58	14595058.92	40°11'13.988"N	104°41'26.815"W	1.88	
8480.00	89.410	179.270	7120.53	1241.82	-1241.81	-102.88	1726777.62	14594971.97	40°11'13.128"N	104°41'26.806"W	0.90	
8568.00	88.490	181.010	7122.14	1329.80	-1329.79	-103.09	1726777.71	14594884.03	40°11'12.259"N	104°41'26.808"W	2.24	
8655.00	89.200	180.160	7123.90	1416.78	-1416.77	-103.98	1726777.13	14594797.08	40°11'11.400"N	104°41'26.820"W	1.27	
8743.00	90.890	179.170	7123.83	1504.77	-1504.76	-103.46	1726777.95	14594709.13	40°11'10.530"N	104°41'26.813"W	2.23	
8830.00	88.000	180.350	7124.67	1591.76	-1591.75	-103.10	1726778.62	14594622.18	40°11'09.670"N	104°41'26.808"W	3.59	
8918.00	88.120	180.120	7127.65	1679.70	-1679.69	-103.46	1726778.56	14594534.26	40°11'08.801"N	104°41'26.813"W	0.29	
9005.00	89.040	180.030	7129.80	1766.68	-1766.67	-103.57	1726778.75	14594447.32	40°11'07.942"N	104°41'26.815"W	1.06	
9093.00	90.680	179.740	7130.02	1854.67	-1854.66	-103.40	1726779.24	14594359.36	40°11'07.072"N	104°41'26.812"W	1.89	
9180.00	89.070	180.370	7130.21	1941.67	-1941.66	-103.48	1726779.46	14594272.40	40°11'06.213"N	104°41'26.813"W	1.99	
9268.00	89.570	180.080	7131.25	2029.66	-2029.65	-103.83	1726779.42	14594184.44	40°11'05.343"N	104°41'26.818"W	0.66	
9355.00	87.720	180.740	7133.31	2116.63	-2116.62	-104.45	1726779.10	14594097.51	40°11'04.484"N	104°41'26.826"W	2.26	
9442.00	87.880	180.470	7136.65	2203.56	-2203.55	-105.37	1726778.48	14594010.61	40°11'03.624"N	104°41'26.838"W	0.36	
9530.00	88.090	180.150	7139.75	2291.51	-2291.50	-105.84	1726778.32	14593922.70	40°11'02.755"N	104°41'26.844"W	0.43	
9617.00	88.460	179.890	7142.36	2378.47	-2378.46	-105.87	1726778.59	14593835.77	40°11'01.896"N	104°41'26.844"W	0.52	
9705.00	88.550	179.660	7144.66	2466.44	-2466.43	-105.53	1726779.24	14593747.84	40°11'01.027"N	104°41'26.840"W	0.28	
9792.00	88.740	179.240	7146.72	2553.41	-2553.40	-104.69	1726780.38	14593660.90	40°11'00.167"N	104°41'26.829"W	0.53	
9880.00	89.410	179.520	7148.14	2641.39	-2641.38	-103.74	1726781.64	14593572.96	40°10'59.298"N	104°41'26.817"W	0.83	
9968.00	89.780	178.640	7148.76	2729.38	-2729.37	-102.33	1726783.35	14593485.01	40°10'58.428"N	104°41'26.798"W	1.08	
10055.00	90.310	178.020	7148.69	2816.34	-2816.33	-99.79	1726786.19	14593398.10	40°10'57.569"N	104°41'26.766"W	0.94	
10143.00	89.910	180.280	7148.52	2904.32	-2904.31	-98.49	1726787.80	14593310.15	40°10'56.700"N	104°41'26.749"W	2.61	
10230.00	90.490	179.930	7148.22	2991.32	-2991.31	-98.65	1726787.95	14593223.19	40°10'55.840"N	104°41'26.751"W	0.78	
10318.00	90.980	179.910	7147.09	3079.31	-3079.30	-98.52	1726788.38	14593135.23	40°10'54.970"N	104°41'26.749"W	0.56	
10405.00	88.980	181.190	7147.12	3166.30	-3166.29	-99.36	1726787.85	14593048.27	40°10'54.111"N	104°41'26.760"W	2.73	
10493.00	89.420	181.110	7148.35	3254.28	-3254.27	-101.12	1726786.39	14592960.33	40°10'53.241"N	104°41'26.783"W	0.51	
10580.00	89.290	181.880	7149.33	3341.24	-3341.23	-103.39	1726784.42	14592873.39	40°10'52.382"N	104°41'26.812"W	0.90	
10668.00	89.170	181.950	7150.51	3429.18	-3429.17	-106.33	1726781.79	14592785.47	40°10'51.513"N	104°41'26.850"W	0.16	
10755.00	91.630	181.440	7149.90	3516.14	-3516.13	-108.91	1726779.52	14592698.54	40°10'50.654"N	104°41'26.883"W	2.89	
10843.00	91.910	181.150	7147.19	3604.07	-3604.06	-110.90	1726777.84	14592610.64	40°10'49.785"N	104°41'26.909"W	0.46	
10931.00	92.310	180.470	7143.95	3692.00	-3691.99	-112.14	1726776.90	14592522.74	40°10'48.916"N	104°41'26.925"W	0.90	
11018.00	91.570	180.010	7141.00	3778.95	-3778.94	-112.50	1726776.84	14592435.82	40°10'48.056"N	104°41'26.929"W	1.00	
11105.00	92.490	179.250	7137.92	3865.89	-3865.88	-111.94	1726777.71	14592348.92	40°10'47.197"N	104°41'26.922"W	1.37	
11193.00	91.700	180.070	7134.70	3953.83	-3953.82	-111.42	1726778.53	14592261.02	40°10'46.328"N	104°41'26.915"W	1.29	
11280.00	89.510	180.980	7133.78	4040.82	-4040.81	-112.22	1726778.04	14592174.06	40°10'45.469"N	104°41'26.926"W	2.73	
11368.00	89.380	180.810	7134.64	4128.80	-4128.79	-113.59	1726776.97	14592086.11	40°10'44.599"N	104°41'26.943"W	0.24	

REFERENCE WELLPATH IDENTIFICATION			
Operator	KERR-MCGEE OIL & GAS ONSHORE LP (WA)	Slot	SLOT#44 RW 35N-32HZ(441'FSL & 1764'FWL,SEC.29)
Area	COLORADO	Well	RW 35N-32HZ
Field	WELD COUNTY (UTM/TRUE NORTH)	Wellbore	RW 35N-32HZ AWB
Facility	SEC.29-T3N-R65W		

WELLPATH DATA (154 stations) † = interpolated/extrapolated station												
MD [ft]	Inclination (°)	Azimuth (°)	TVD [ft]	Vert Sect [ft]	North [ft]	East [ft]	Grid East [US ft]	Grid North [US ft]	Latitude	Longitude	DLS (°/100ft)	Comments
11455.00	90.120	180.520	7135.02	4215.80	-4215.78	-114.60	1726776.27	14591999.15	40°10'43.740"N	104°41'26.956"W	0.91	
11543.00	91.050	179.990	7134.12	4303.79	-4303.78	-114.99	1726776.18	14591911.19	40°10'42.870"N	104°41'26.961"W	1.22	
11630.00	89.910	179.680	7133.39	4390.78	-4390.77	-114.74	1726776.74	14591824.23	40°10'42.010"N	104°41'26.958"W	1.36	
11717.00	89.230	179.910	7134.04	4477.78	-4477.77	-114.43	1726777.35	14591737.27	40°10'41.151"N	104°41'26.954"W	0.83	
11805.00	89.350	179.100	7135.13	4565.77	-4565.76	-113.67	1726778.42	14591649.32	40°10'40.281"N	104°41'26.944"W	0.93	
11893.00	89.380	179.120	7136.11	4653.75	-4653.74	-112.30	1726780.09	14591561.37	40°10'39.412"N	104°41'26.927"W	0.04	
11981.00	90.220	178.320	7136.41	4741.73	-4741.72	-110.34	1726782.36	14591473.44	40°10'38.542"N	104°41'26.901"W	1.32	
12068.00	90.430	177.820	7135.92	4828.68	-4828.67	-107.41	1726785.59	14591386.53	40°10'37.683"N	104°41'26.864"W	0.62	
12156.00	91.390	177.820	7134.52	4916.60	-4916.59	-104.06	1726789.25	14591298.66	40°10'36.814"N	104°41'26.821"W	1.09	
12243.00	91.350	177.510	7132.44	5003.50	-5003.49	-100.52	1726793.09	14591211.80	40°10'35.955"N	104°41'26.775"W	0.36	
12331.00	89.380	178.700	7131.88	5091.45	-5091.44	-97.61	1726796.31	14591123.90	40°10'35.086"N	104°41'26.737"W	2.62	
12418.00	89.350	177.780	7132.85	5178.40	-5178.39	-94.94	1726799.28	14591036.99	40°10'34.227"N	104°41'26.703"W	1.06	
12505.00	87.810	179.670	7135.00	5265.35	-5265.34	-93.00	1726801.52	14590950.09	40°10'33.368"N	104°41'26.678"W	2.80	
12592.00	86.920	181.420	7139.00	5352.25	-5352.24	-93.83	1726800.99	14590863.22	40°10'32.509"N	104°41'26.689"W	2.25	
12679.00	87.320	181.100	7143.37	5439.11	-5439.10	-95.74	1726799.39	14590776.38	40°10'31.651"N	104°41'26.713"W	0.59	
12729.00†	87.496	180.611	7145.63	5489.06	-5489.05	-96.48	1726798.82	14590726.45	40°10'31.157"N	104°41'26.723"W	1.04	ENTER RADIUS TOE (238'FSL & 1705'FWL,SEC.32) 40.1753214 -104.6907564
12767.00	87.630	180.240	7147.25	5527.02	-5527.01	-96.77	1726798.67	14590688.50	40°10'30.782"N	104°41'26.727"W	1.04	
12828.00	87.750	180.260	7149.71	5587.97	-5587.96	-97.03	1726798.61	14590627.58	40°10'30.180"N	104°41'26.730"W	0.20	LAST BHGE PRODUCTION MWD+IFR1+SC SURVEY
12872.00	87.750	180.260	7151.44	5631.94	-5631.93	-97.23	1726798.57	14590583.63	40°10'29.745"N	104°41'26.733"W	0.00	PTB (95'FSL & 1705'FWL,SEC.32) 40.1749292 -104.6907590

TARGETS								
Name	TVD [ft]	North [ft]	East [ft]	Grid East [US ft]	Grid North [US ft]	Latitude	Longitude	Shape
SEC.29-T3N-R65W	1.00	1.52	-150.01	1726726.17	14596214.64	40°11'25.415"N	104°41'27.413"W	polygon
SEC.32-T3N-R65W	1.00	1.52	-150.01	1726726.17	14596214.64	40°11'25.415"N	104°41'27.413"W	polygon
RW 35N-32HZ HEEL REV-1(152'FSL & 1647'FWL,SEC.29)	7121.00	-288.48	-115.36	1726761.82	14595924.87	40°11'22.549"N	104°41'26.966"W	point
RW 35N-32HZ BHL REV-1(56'FSL & 1686'FWL,SEC.32)	7130.00	-5670.63	-115.94	1726780.00	14590544.88	40°10'29.363"N	104°41'26.974"W	point
RW 35N-32HZ LANDBOX	7130.00	0.00	0.00	1726876.13	14596213.65	40°11'25.400"N	104°41'25.480"W	polygon
RW 35N-32HZ RADIUS 1	7130.00	-439.86	-448.64	1726429.20	14595772.40	40°11'21.053"N	104°41'31.261"W	polygon
RW 35N-32HZ RADIUS 2	7130.00	-5726.13	-488.98	1726407.30	14590488.10	40°10'28.814"N	104°41'31.779"W	polygon

REFERENCE WELLPATH IDENTIFICATION			
Operator	KERR-MCGEE OIL & GAS ONSHORE LP (WA)	Slot	SLOT#44 RW 35N-32HZ(441'FSL & 1764'FWL,SEC.29)
Area	COLORADO	Well	RW 35N-32HZ
Field	WELD COUNTY (UTM/TRUE NORTH)	Wellbore	RW 35N-32HZ AWB
Facility	SEC.29-T3N-R65W		

WELLPATH COMPOSITION - Ref Wellbore: RW 35N-32HZ AWB Ref Wellpath: RW 35N-32HZ AWP					
Start MD [ft]	End MD [ft]	Positional Uncertainty Model		Log Name/Comment	Wellbore
17.00	1817.00	Custom APC	ISCWSA REV 2 MWD+IFR1+SC (approximation)	BHGE Custom APC ISCWSA Rev-2 MWD+IFR1+SC <116 - 1817>	RW 35N-32HZ AWB
1817.00	12828.00	Custom APC	ISCWSA REV 2 MWD+IFR1+SC (approximation)	BHGE Custom APC ISCWSA Rev-2 MWD+IFR1+SC <1892 - 12828>	RW 35N-32HZ AWB
12828.00	12872.00	Blind Drilling	(std)	Projection to bit	RW 35N-32HZ AWB

REFERENCE WELLPATH IDENTIFICATION			
Operator	KERR-MCGEE OIL & GAS ONSHORE LP (WA)	Slot	SLOT#44 RW 35N-32HZ(441'FSL & 1764'FWL,SEC.29)
Area	COLORADO	Well	RW 35N-32HZ
Field	WELD COUNTY (UTM/TRUE NORTH)	Wellbore	RW 35N-32HZ AWB
Facility	SEC.29-T3N-R65W		

WELLPATH COMMENTS				
MD [ft]	Inclination [°]	Azimuth [°]	TVD [ft]	Comment
116.00	0.120	343.800	116.00	FIRST BHGE SURFACE MWD+IFR1+SC SURVEY
1817.00	5.730	351.640	1809.20	LAST BHGE SURFACE MWD+IFR1+SC SURVEY
1892.00	5.670	355.020	1883.83	FIRST BHGE PRODUCTION MWD+IFR1+SC SURVEY
6354.00	3.004	176.457	6320.93	KOP
7518.00	90.400	182.160	7118.49	LANDING (161'FSL & 1643'FWL,SEC.29) 40.1896190 -104.6908436
7999.00	89.570	177.150	7113.74	EXIT RADIUS HEEL (320'FNL & 1646'FWL,SEC.32) 40.1882994 -104.6908333
12729.00	87.496	180.611	7145.63	ENTER RADIUS TOE (238'FSL & 1705'FWL,SEC.32) 40.1753214 -104.6907564
12828.00	87.750	180.260	7149.71	LAST BHGE PRODUCTION MWD+IFR1+SC SURVEY
12872.00	87.750	180.260	7151.44	PTB (95'FSL & 1705'FWL,SEC.32) 40.1749292 -104.6907590