

HALLIBURTON

Cementing Job Summary

The Road to Excellence Starts with Safety

Sold To #: 300466		Ship To #: 3794490		Quote #: 0022335887		Sales Order #: 0904204581					
Customer: ANADARKO PETROLEUM CORP-EBUS				Customer Rep: Jeremy Wilde							
Well Name: RW		Well #: 34N-32HZ		API/UWI #: 05-123-44618-00							
Field: WATTENBERG	City (SAP): HUDSON		County/Parish: WELD		State: COLORADO						
Legal Description: SE SW-29-3N-65W-441FSL-1859FWL											
Contractor: Xtreme				Rig/Platform Name/Num: Xtreme 22							
Job BOM: 7523 7523											
Well Type: HORIZONTAL GAS											
Sales Person: HALAMERICA\HX41086				Srv Supervisor: Aaron Smith							
Job											
Formation Name											
Formation Depth (MD)		Top		Bottom							
Form Type											
BHST											
Job depth MD		13167ft		Job Depth TVD							
Water Depth											
Wk Ht Above Floor 5											
Perforation Depth (MD)		From		To							
Well Data											
Description	New / Used	Size in	ID in	Weight lbm/ft	Thread	Grade	Top MD ft	Bottom MD ft	Top TVD ft	Bottom TVD ft	
Casing		9.625	8.921	36		J-55	0	1858	0	1858	
Casing		5.5	4.778	20	LTC	HCP110	0	13157	0	7110	
Open Hole Section			7.875				1858	13167	1858	7110	
Tools and Accessories											
Type	Size in	Qty	Make	Depth ft		Type	Size in	Qty	Make		
Guide Shoe	5.5					Top Plug	5.5	1	AOT		
Float Shoe	5.5	1	AOT	13157		Bottom Plug	5.5	1	AOT		
Float Collar	5.5	1	AOT	13109		SSR plug set	5.5		HES		
Insert Float	5.5					Plug Container	5.5	1	HES		
Stage Tool	5.5					Centralizers	5.5	192	AOT		
Fluid Data											
Stage/Plug #: 1											
Fluid #	Stage Type	Fluid Name			Qty	Qty UoM	Mixing Density lbm/gal	Yield ft3/sack	Mix Fluid Gal	Rate bbl/min	Total Mix Fluid Gal
1	Tuned Spacer III	Tuned Spacer III			60	bbl	10.5	6.25			
Fluid #	Stage Type	Fluid Name			Qty	Qty UoM	Mixing Density lbm/gal	Yield ft3/sack	Mix Fluid Gal	Rate bbl/min	Total Mix Fluid Gal
2	ElastiCem - Cap Cement	ELASTICEM (TM) SYSTEM			150	sack	13.2	1.57		5	7.52

HALLIBURTON

Cementing Job Summary

Fluid #	Stage Type	Fluid Name	Qty	Qty UoM	Mixing Density lbm/gal	Yield ft ³ /sack	Mix Fluid Gal	Rate bbl/min	Total Mix Fluid Gal	
3	ElastiCem	ELASTICEM (TM) SYSTEM	400	sack	13.2	1.57		5	7.53	
4	EconoCem	ECONOCEM (TM) SYSTEM	790	sack	13.5	1.68		5	7.99	
5	Fresh Water and MMCR	Fresh Water and MMCR	20	bbl	8.34					
6	Fresh Water	Fresh Water	270.6	bbl	8.34					
Cement Left In Pipe		Amount	50 ft		Reason			Shoe Joint		
Comment 10 bbls spacer to surface, TOTC 5518' TOLC 1007'										

2.0 Real-Time Job Summary

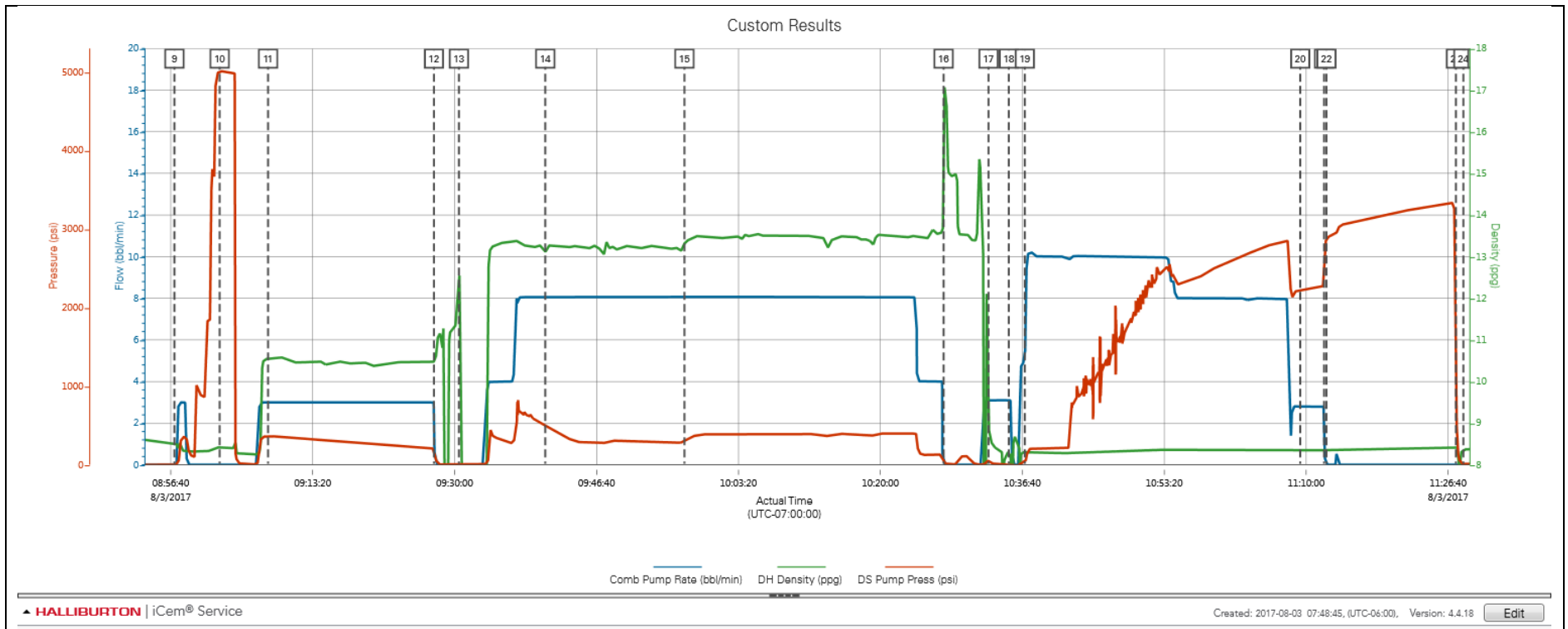
2.1 Job Event Log

Type	Seq. No.	Activity	Graph Label	Date	Time	Source	Comb Pump Rate (bbl/min)	DH Density (ppg)	DS Pump Press (psi)	Comments
Event	1	Call Out	Call Out	8/3/2017	03:00:00	USER				For on location @ 0700.
Event	2	Depart Yard Safety Meeting	Depart Yard Safety Meeting	8/3/2017	06:00:00	USER				Journey management meeting held prior to departure to discuss route and hazards of route.
Event	3	Depart from Service Center or Other Site	Depart from Service Center or Other Site	8/3/2017	06:15:00	USER				With all equipment and personnel.
Event	4	Arrive at Location from Service Center	Arrive at Location from Service Center	8/3/2017	07:15:00	USER				Wrong directions on call sheet, arrived with all equipment and materials.
Event	5	Pre-Rig Up Safety Meeting	Pre-Rig Up Safety Meeting	8/3/2017	07:20:00	USER				JSA to discuss the hazards of rig-up.
Event	6	Rig-Up Equipment	Rig-Up Equipment	8/3/2017	07:30:00	USER				Rig-up all surface lines and equipment.
Event	7	Rig-Up Completed	Rig-Up Completed	8/3/2017	08:15:00	USER				With no incidents or injuries.
Event	8	Pre-Job Safety Meeting	Pre-Job Safety Meeting	8/3/2017	08:30:00	USER	0.00	8.42	44.00	With all essential personnel to discuss the job procedure and hazards of the job.
Event	9	Start Job	Start Job	8/3/2017	08:57:06	COM5	0.00	8.50	-1.00	With water supplied from day tanks, water tested good to mix cement. PH 7.5, Cl 69 PPM, Temp 77
Event	10	Test Lines	Test Lines	8/3/2017	09:02:24	USER	0.00	8.42	5012.00	@ 4890 PSI, test was good.
Event	11	Pump Spacer	Pump Spacer	8/3/2017	09:08:05	USER	3.00	10.55	358.00	60 bbls tuned spacer @ 10.5 ppg, 6.25 ft3/sk, 40.2 gal/sk. Verified with pressurized scales. 3 bpm 380 psi.
Event	12	Shutdown	Shutdown	8/3/2017	09:27:34	USER	3.00	10.47	209.00	To remove the cap and load plug.
Event	13	Drop Bottom Plug	Drop Bottom Plug	8/3/2017	09:30:30	USER	0.00	12.54	-2.00	Loaded top plug in plug container, verified by customer rep.
Event	14	Pump Lead Cement	Pump Lead Cement	8/3/2017	09:40:39	COM5	8.00	13.08	482.00	400 sks (111.85 bbls) Elasticem at 13.2 ppg, 1.57 ft3/sk, 7.52 gal/sk. Verified with pressurized scales. 8 bpm, 400 psi.

Event	15	Pump Tail Cement	Pump Tail Cement	8/3/2017	09:56:59	COM5	8.10	13.32	304.00	790 sks (236.37 bbls) EconoCem @ 13.5 ppg, 1.68 ft3/sk, 7.99 gal/sk. Verified with pressurized scales. 8 bpm 400 psi.
Event	16	Shutdown	Shutdown	8/3/2017	10:27:25	COM5	0.00	15.98	55.00	To blow lines down for wash-up, and remove cap to load plug.
Event	17	Clean Lines	Clean Lines	8/3/2017	10:32:42	COM5	3.10	9.01	47.00	Wash pumps and lines to the pit.
Event	18	Drop Top Plug	Drop Top Plug	8/3/2017	10:35:05	COM5	3.10	8.30	12.00	Loaded top plug in plug container, verified by customer rep.
Event	19	Pump Displacement	Pump Displacement	8/3/2017	10:36:57	COM5	4.90	8.29	38.00	290.6 bbls fresh water, 10 gallons mmcr in the first 20 bbls.
Event	20	Other	Spacer Returns to Surface	8/3/2017	11:09:18	COM5	2.80	8.35	2227.00	@280 bbls displacement, 10 bbls to surface. TOTC 5518', TOLC 1007'
Event	21	Bump Plug	Bump Plug	8/3/2017	11:12:06	COM5	2.80	8.36	2459.00	@ 500 psi over, final circulating pressure 2300, final bump 2800.
Event	22	Shutdown	Casing Test	8/3/2017	11:12:23	COM5	0.00	8.37	2875.00	@ 3000 psi for 15 minutes.
Event	23	Check Floats	Check Floats	8/3/2017	11:27:35	USER	0.00	8.43	1704.00	Floats good, 3.5 bbls back.
Event	24	End Job	End Job	8/3/2017	11:28:27	COM5	0.00	8.37	7.00	
Event	25	Pre-Rig Down Safety Meeting	Pre-Rig Down Safety Meeting	8/3/2017	11:30:07	USER	0.00	8.37	8.00	JSA to discuss the hazards of Rig-Down
Event	26	Rig-Down Equipment	Rig-Down Equipment	8/3/2017	11:40:00	USER	0.00	8.36	-3.00	Rig-down all surface lines and equipment.
Event	27	Rig-Down Completed	Rig-Down Completed	8/3/2017	12:10:00	USER				With no incidents or injuries.
Event	28	Depart Location Safety Meeting	Depart Location Safety Meeting	8/3/2017	12:20:00	USER				Journey management meeting held prior to departure to discuss route and hazards of route.
Event	29	Depart Location	Depart Location	8/3/2017	12:30:00	USER				Thank You for choosing Halliburton Cementing, Aaron Smith and Crew.

3.0 Attachments

3.1 Custom Results – Job Chart with Events



3.2 Custom Results – Job Chart without Events

