
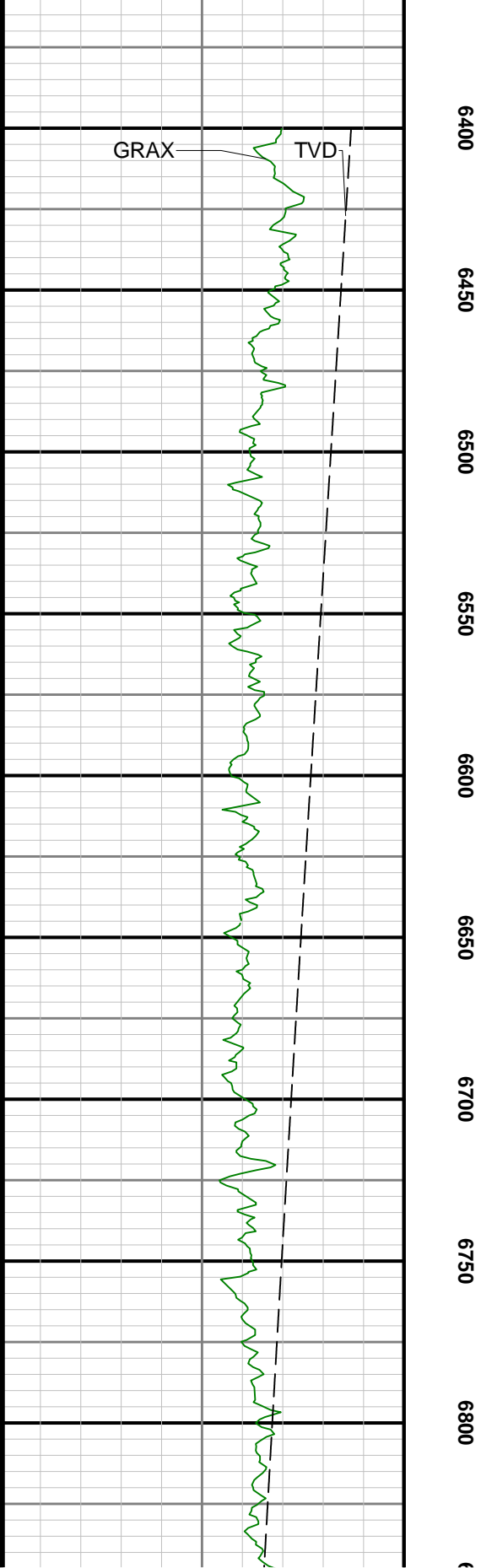
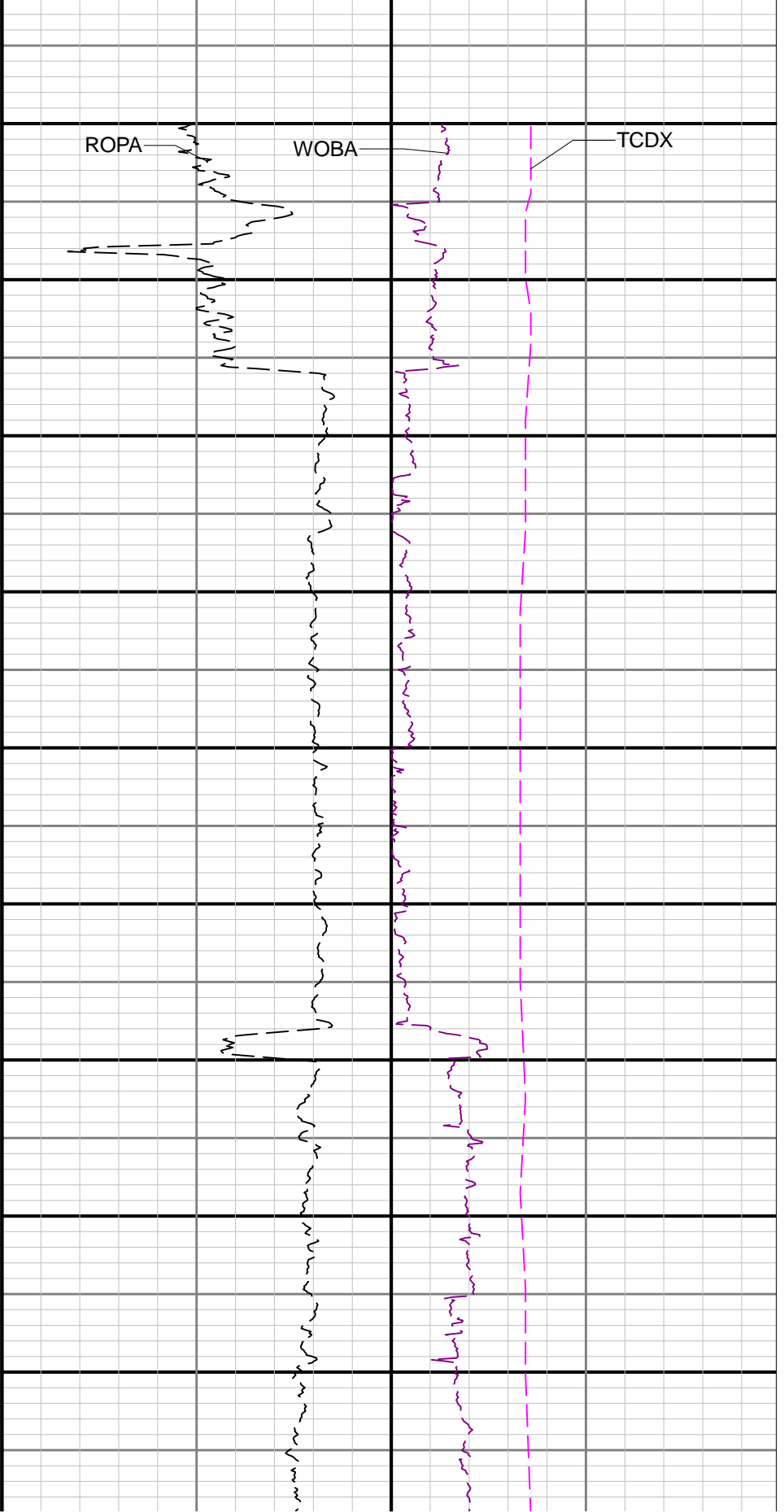
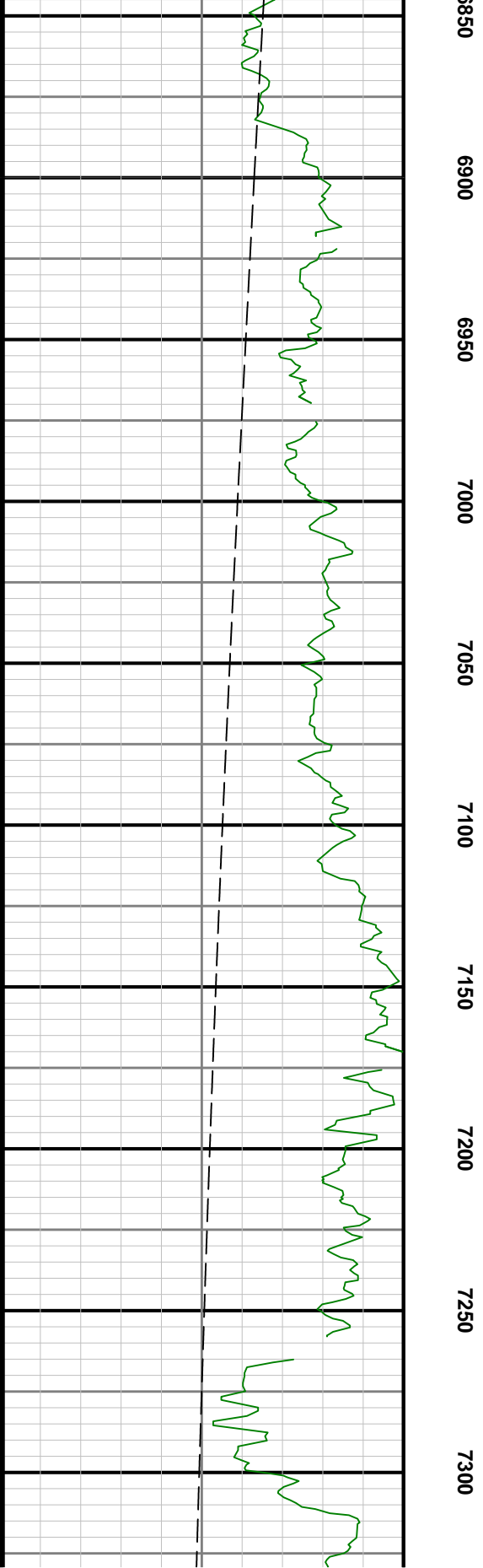
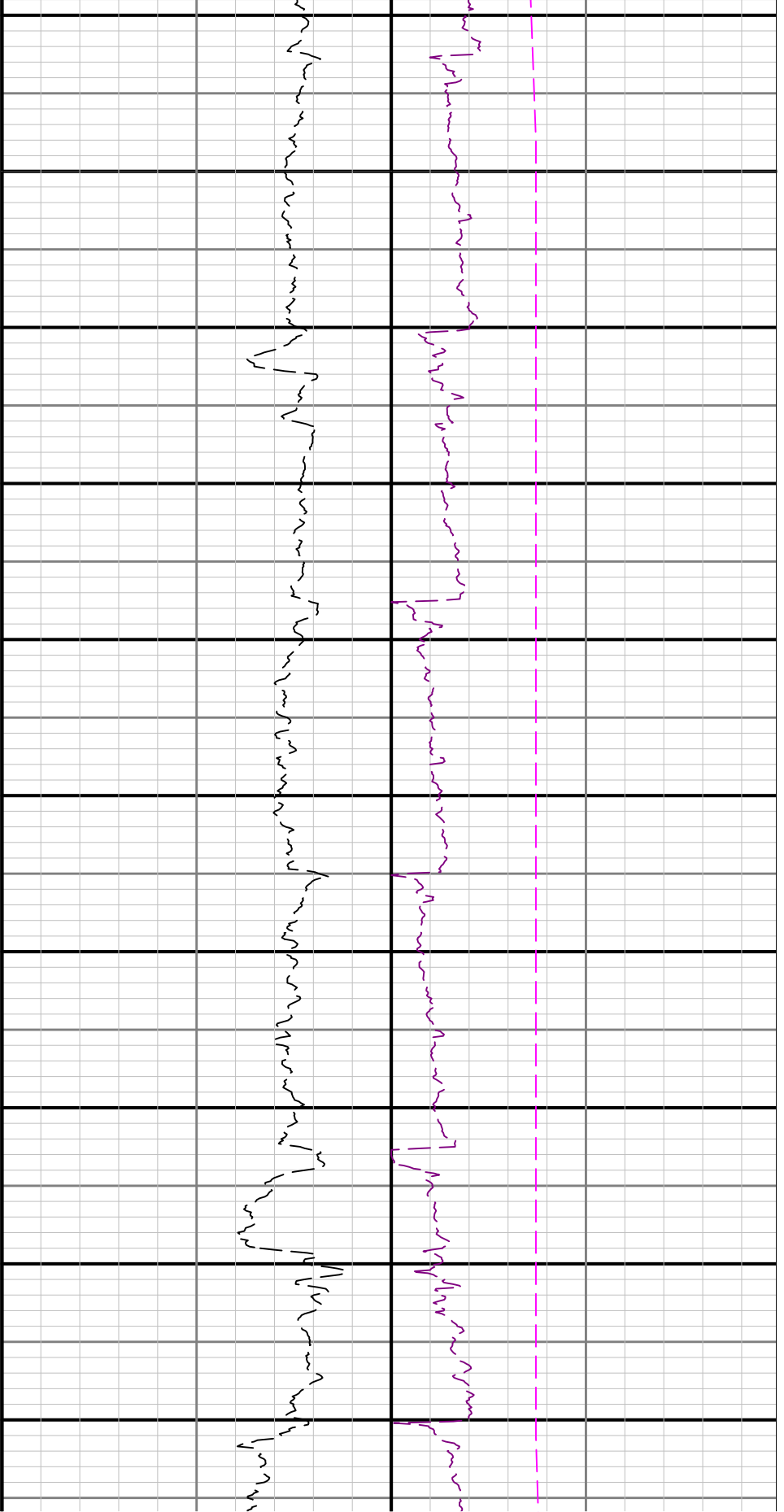
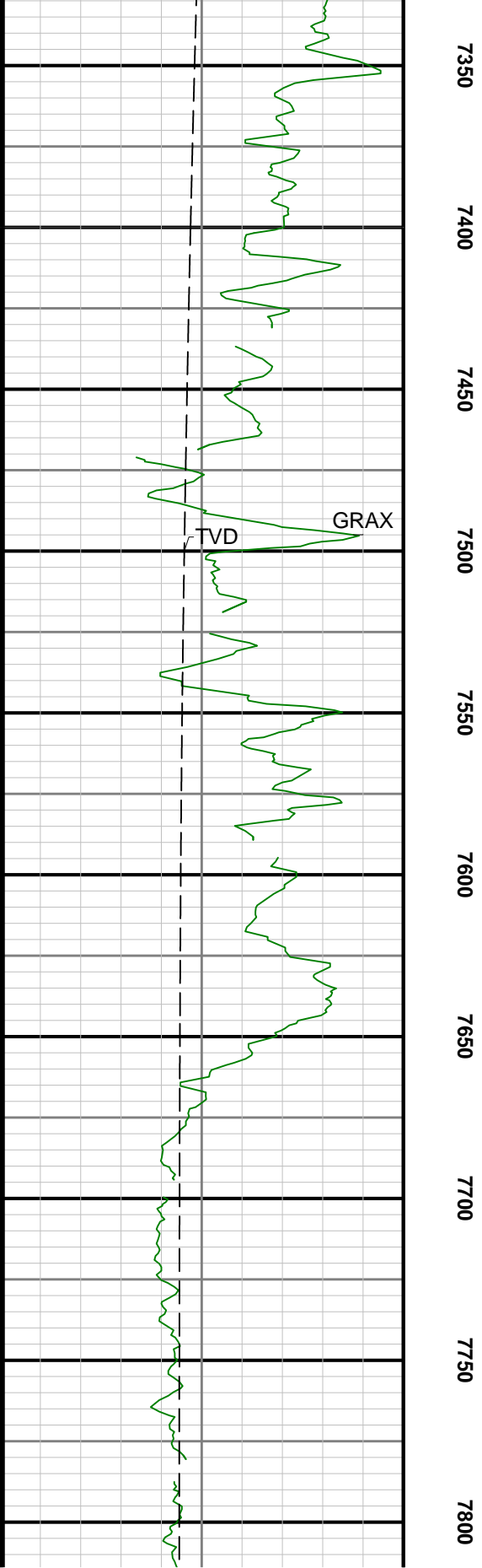
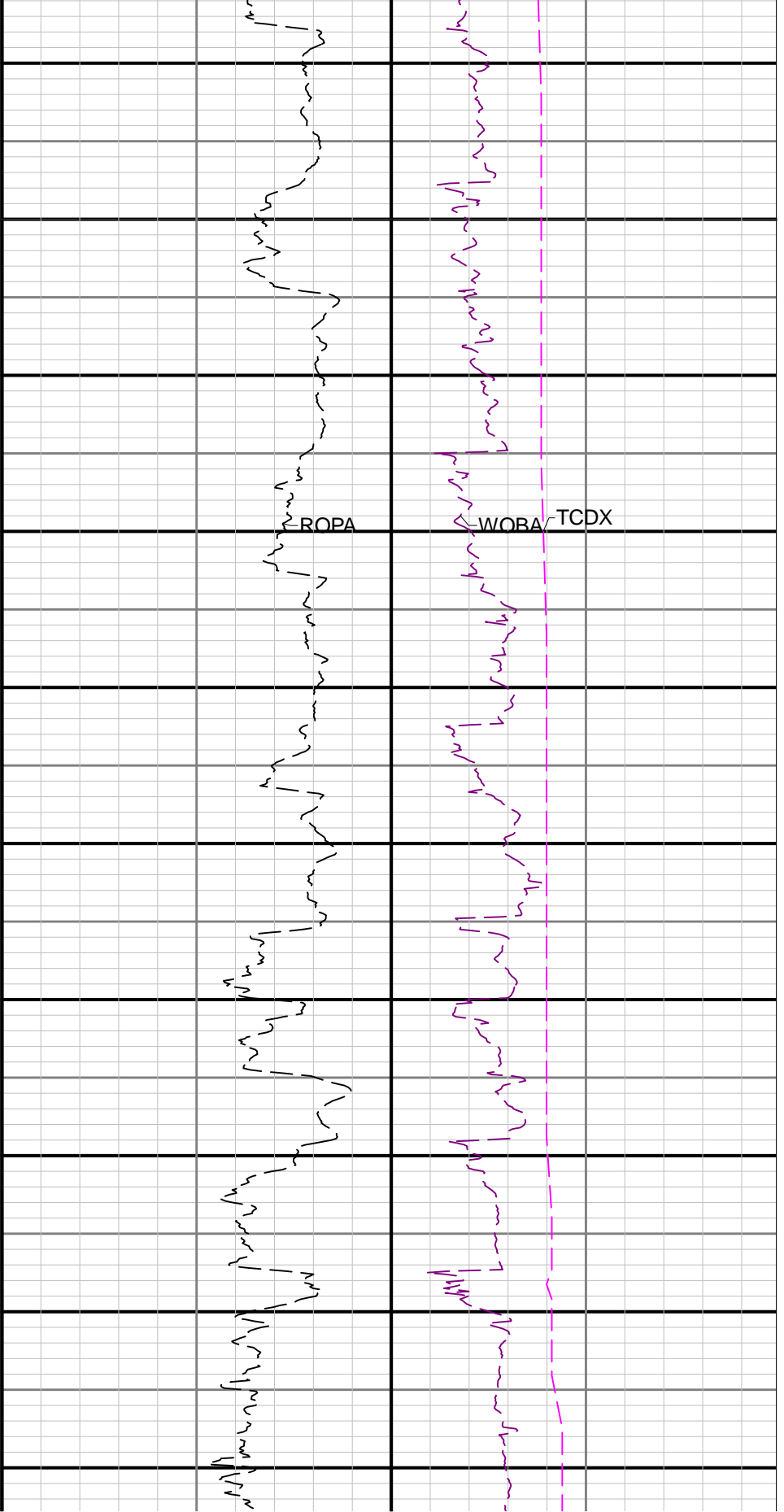
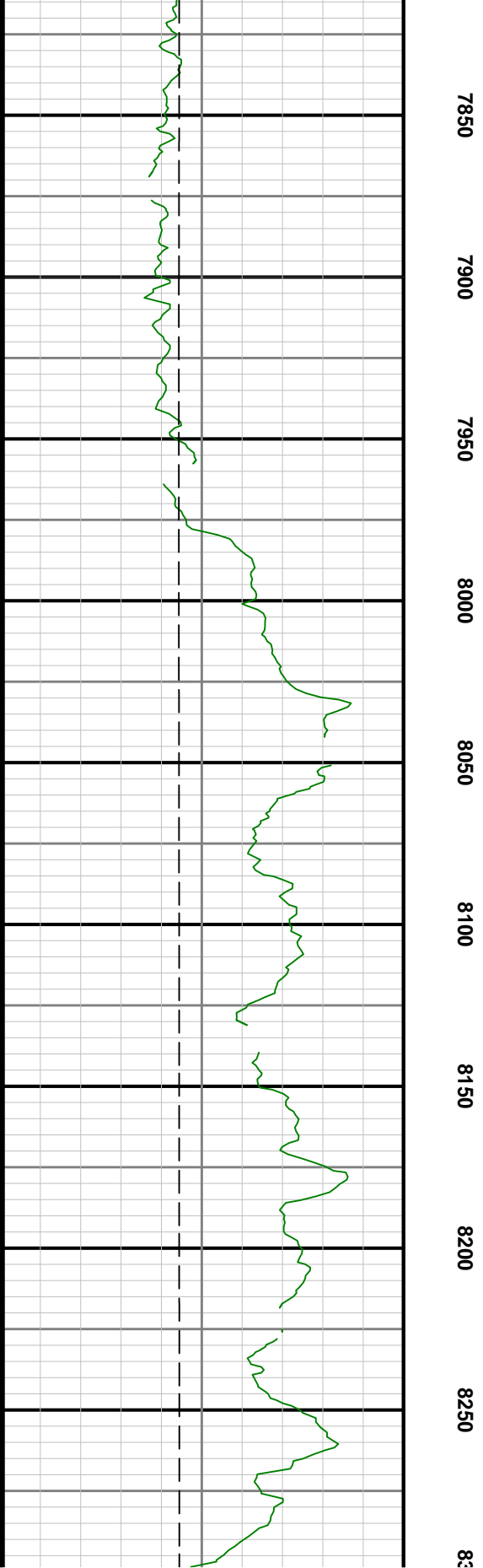
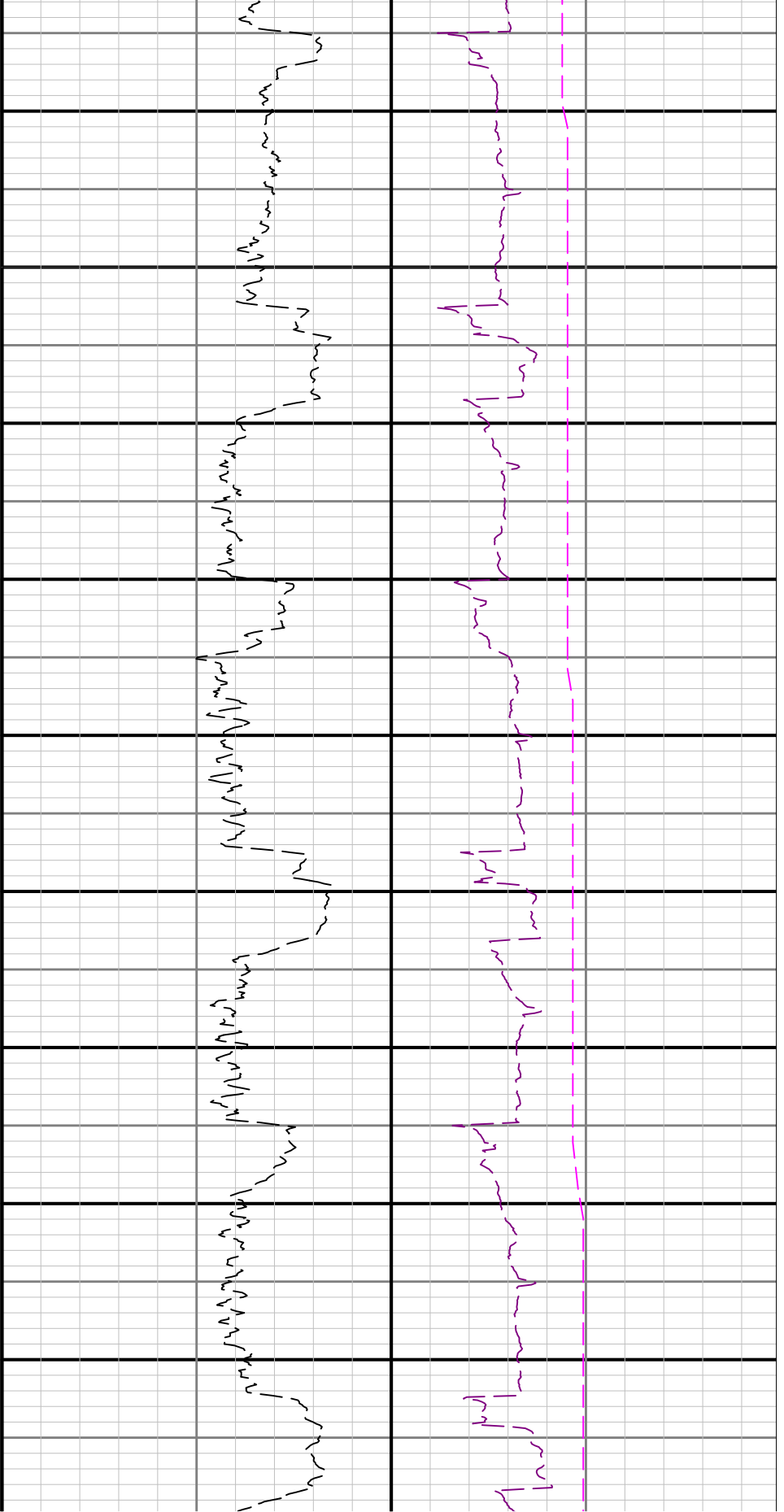


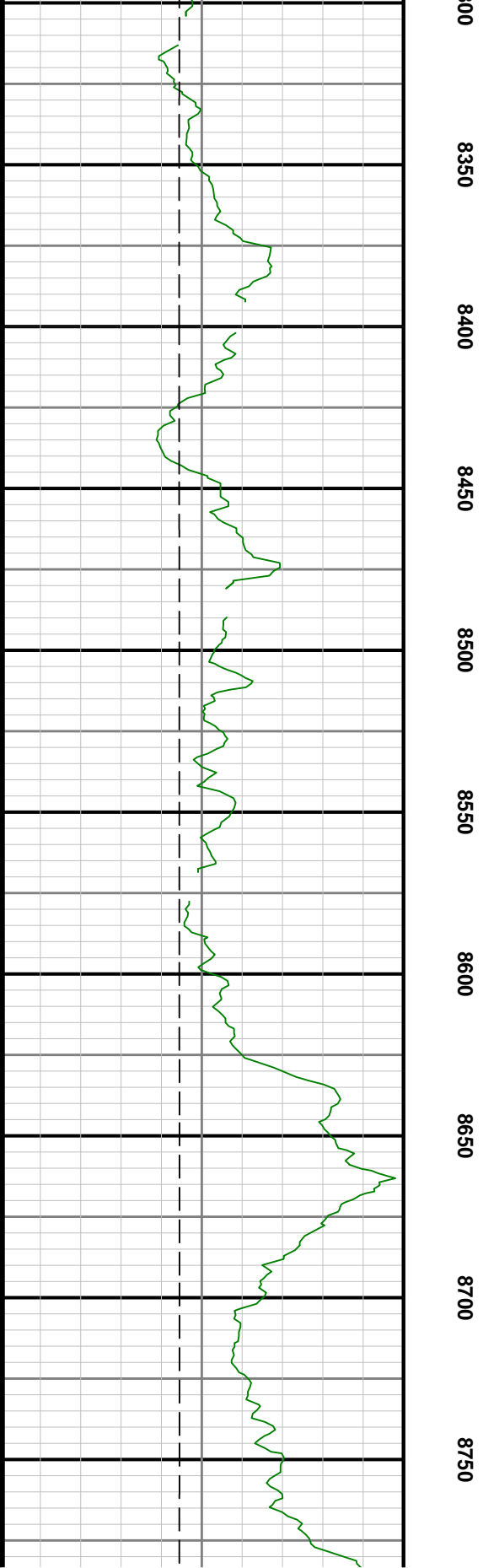
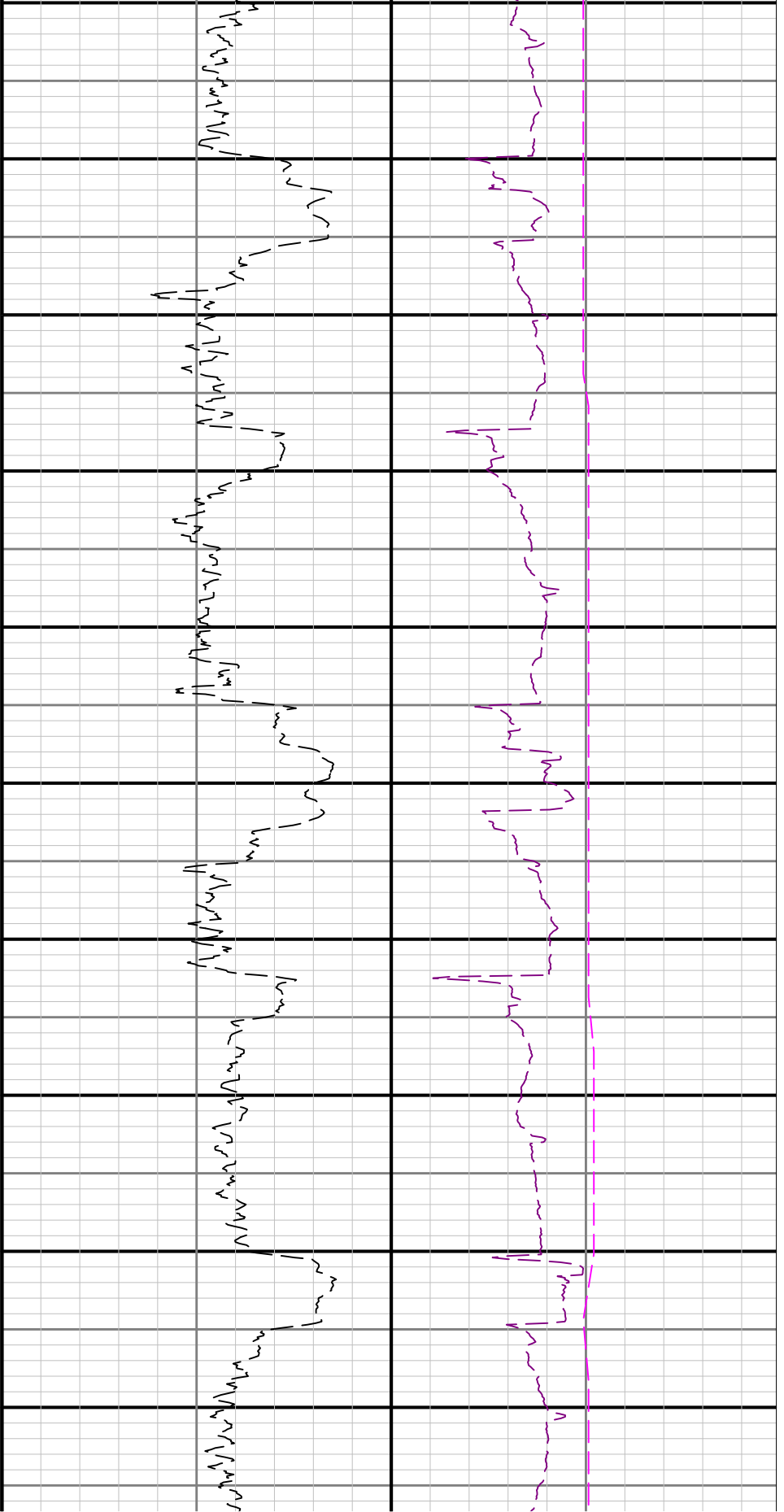
<div></div>		LWD REALTIME LOG COMPOSITE					
		Gamma Ray					
Scale:	Company: Anadarko						
1:600 MD	Well: RW 13N-32HZ						
Depth Reference:	Field: Niobrara						
Driller's Depth	County: Weld			Country: United States			
	State: Colorado						
Status:	Surface Location:					Other Services:	
Field Print	Latitude: 40° 40' 00" N					Directional	
	Longitude: 104° 00' 00" W						
API: 051234461100							
Job ID: 8645941	SEC: 29	TWN: 3N	RGE: 65W				
Permanent Datum (P.D.): Ground Level		Elevation: 4886.00 ft	Interval: 6500.00 ft - 9349.94 ft				Elevations:
Log Measured From: Rig Floor	Above P.D. 17.00 ft	Created: 2017-08-19 13:22:54				Elev. KB: N/A	
BHI Rep 1: N/A	BHI Rep 2: N/A					Elev. DF: 4903.00 ft	
Client Representative: N/A							Elev. GL: 4886.00 ft
<p>"These interpretations and analyses ("Interpretations") are opinions provided by Baker Hughes Oilfield Operations, Inc ("Baker Hughes"), based upon industry practice, empirical relationships, assumptions and measurements, (many of which may be provided by the customer). The Interpretations are not infallible and may be subject to different opinions. Vjwu."Dcmgt"Jwiigu"fqgu"pqv"ycttcpv"vjgkt"ceewtce{"eqttgevpguu."qt"eqorngvgpguu."qt"vjcv"vjg"ewuvqogtøu"cpflqt"cp{"vjktf"rctv{øu"tgnkcpeg"qp"uwej"Kpvgtrtgvcvkqpu"yknn"ceeqornkuj"cp{"rctvkewnct"tguwnvu0"Vjg"ewuvqogt"cuuwogu"hwnn"responsibility for the use of the Interpretations and for decisions based thereon and the customer agrees to release, defend and indemnify Baker Hughes, its parent, subsidiaries and affiliated or related entities, and subcontractors, together with its and their officers, directors, employees, agents and invitees against, any and all claims, losses, damages, or expenses sustained by the customer or any third party arising out of reliance upon or use of the Interpretations, without regard to the cause(s) thereof, including without limitation any form of negligence on the part of Baker Hughes. Unless other contract terms have been agreed to by the parties, each party's liabilities and qdnkicvkqpu"ujcnn"dg"iqxgtpgf"d{"Dcmgt"Jwiigu"Kpeqtrqtcvgføu"Yqtnfykfg"Vgtou"cpf"Eqpfkvkqpu0\$""</p>							
Gamma Ray - Apparent 3 ft Average [GRAX]		MD 1:600 feet	Depth Averaged ROP 3 ft Average [ROPA]		Weight On Bit, Average 1 ft Average [WOBA]		
0 200			1000 0		0 100		
API			ft/h		klb		
True Vertical Depth [TVD]		6350			Downhole Temperature [TCDX]		
8000 6000					100 300		
ft					degF		

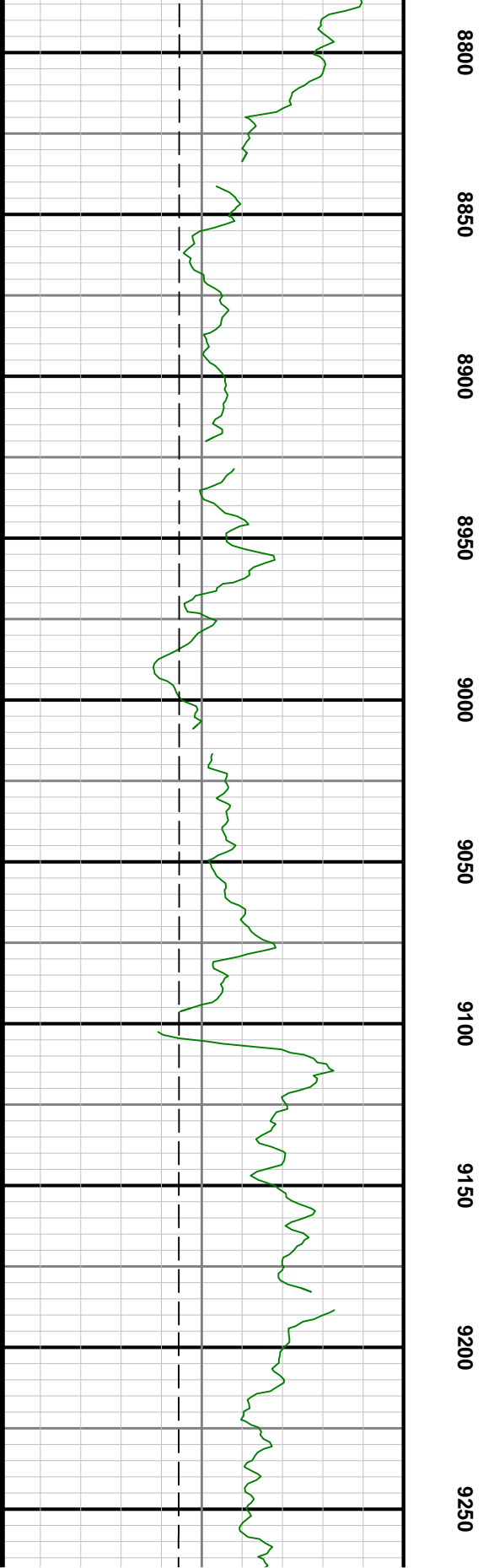
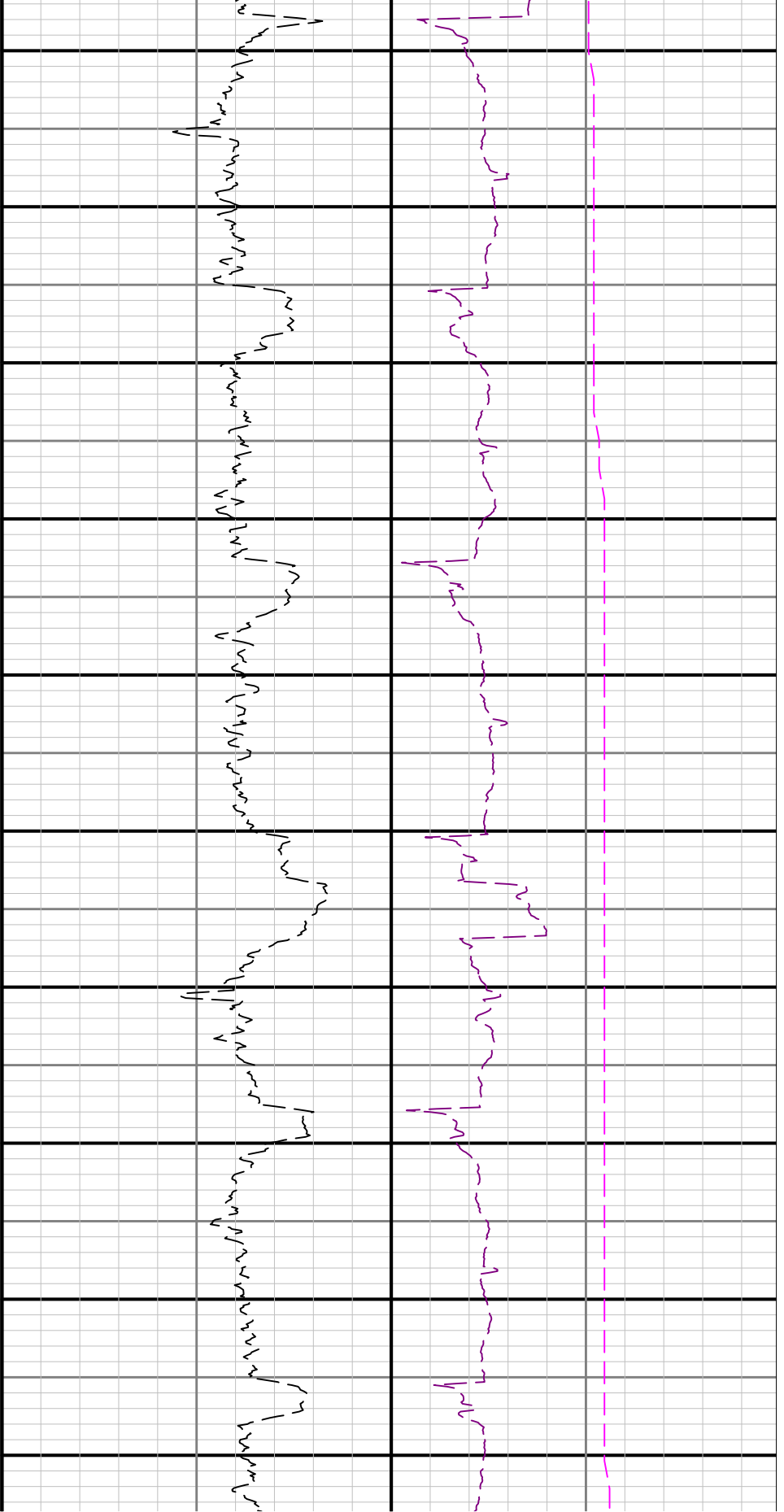


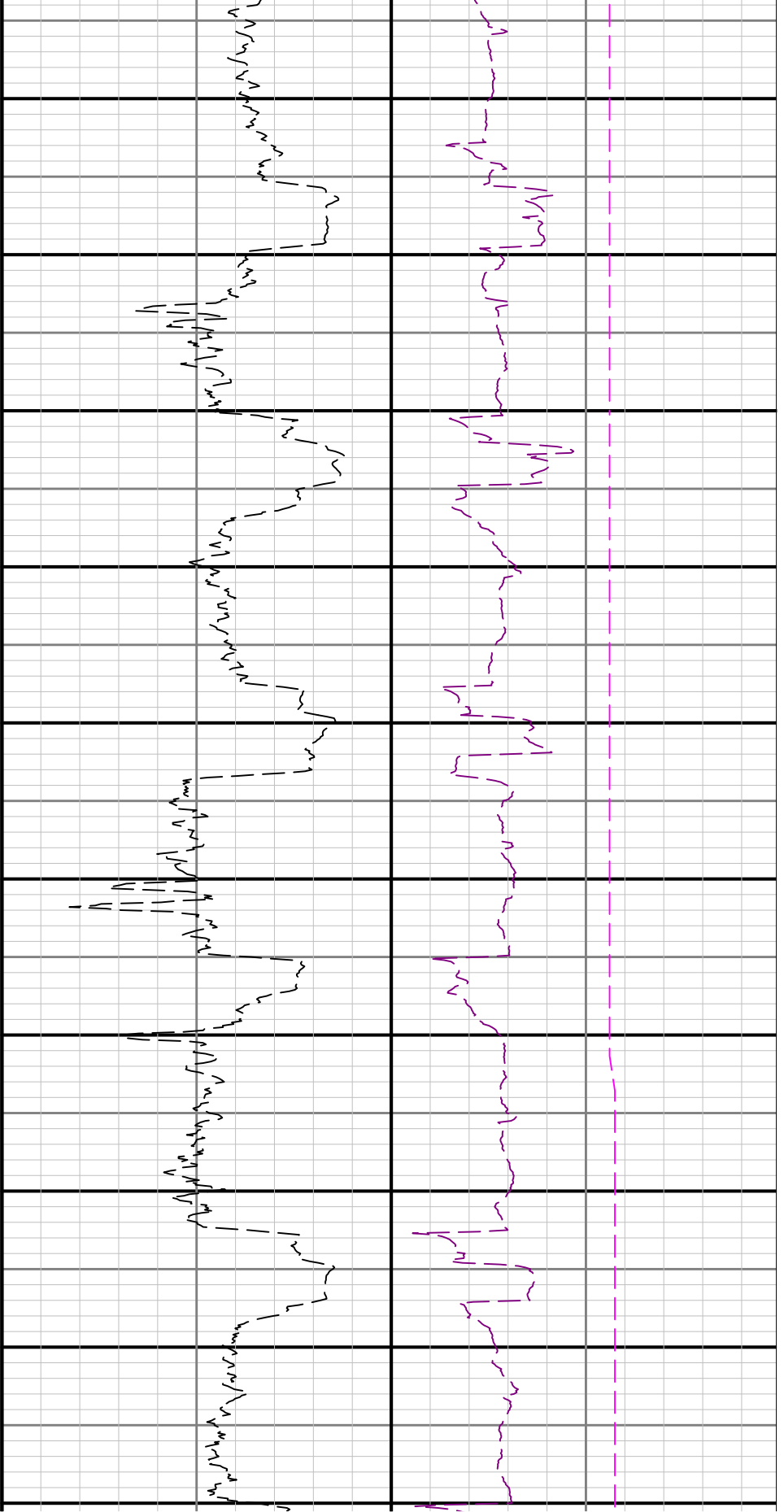




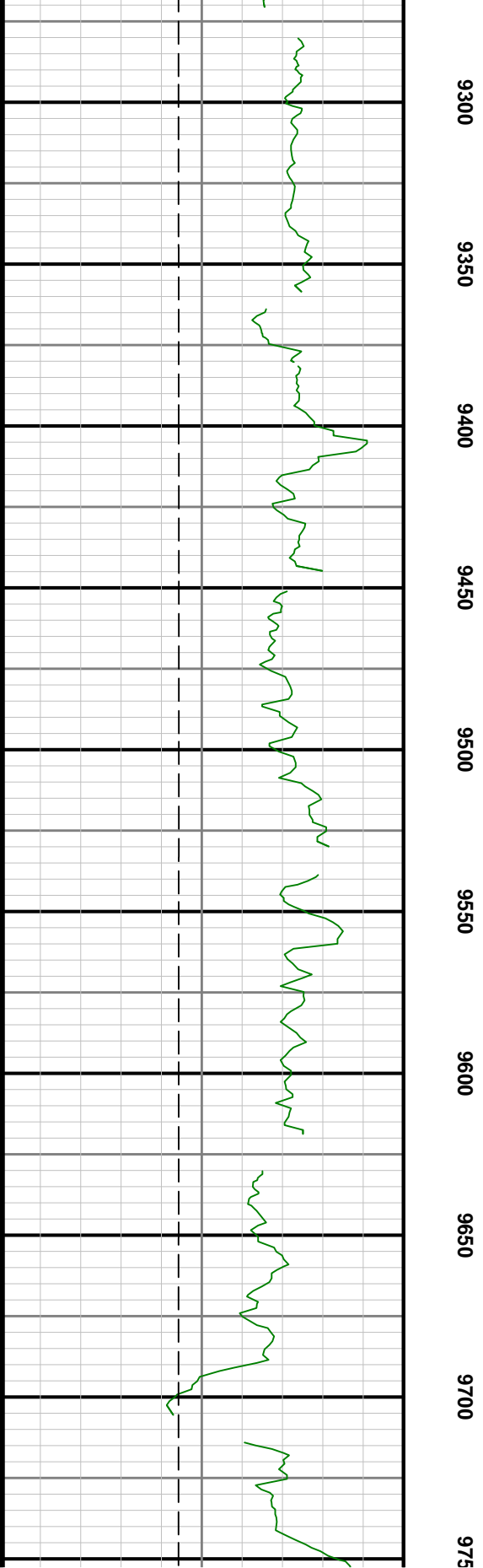


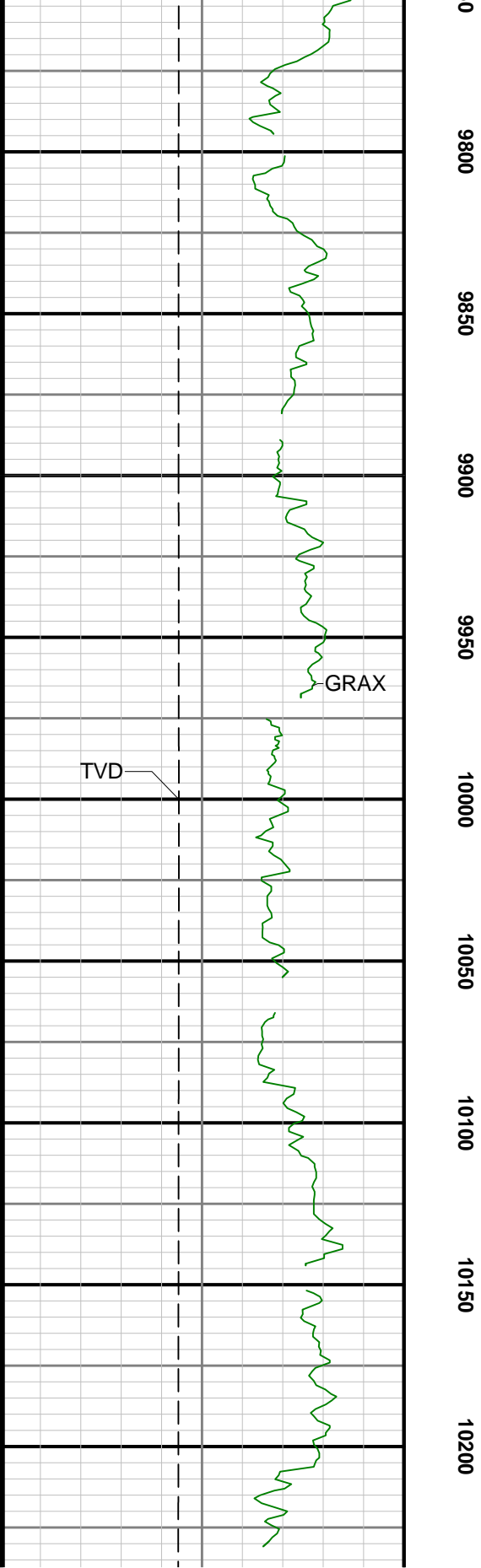
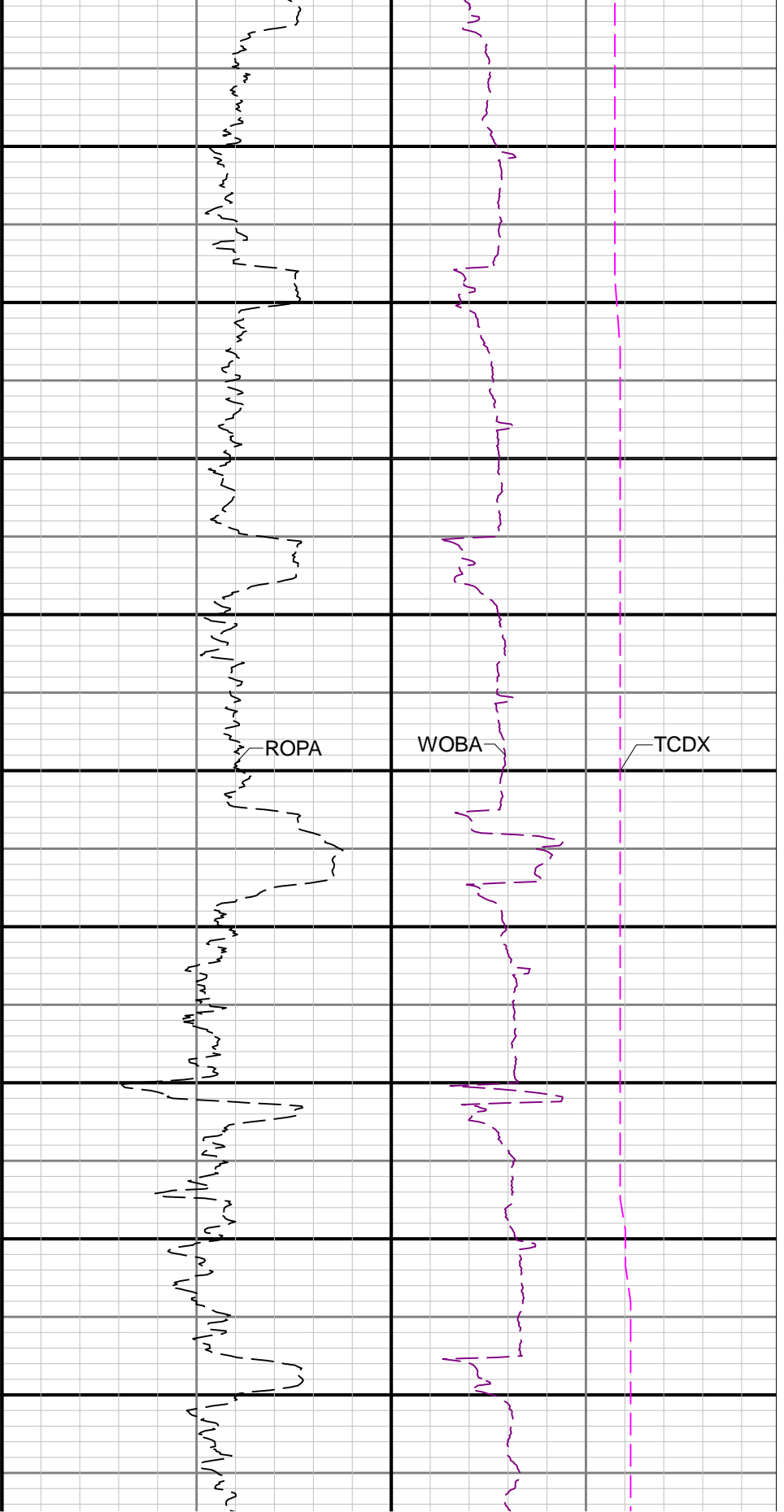


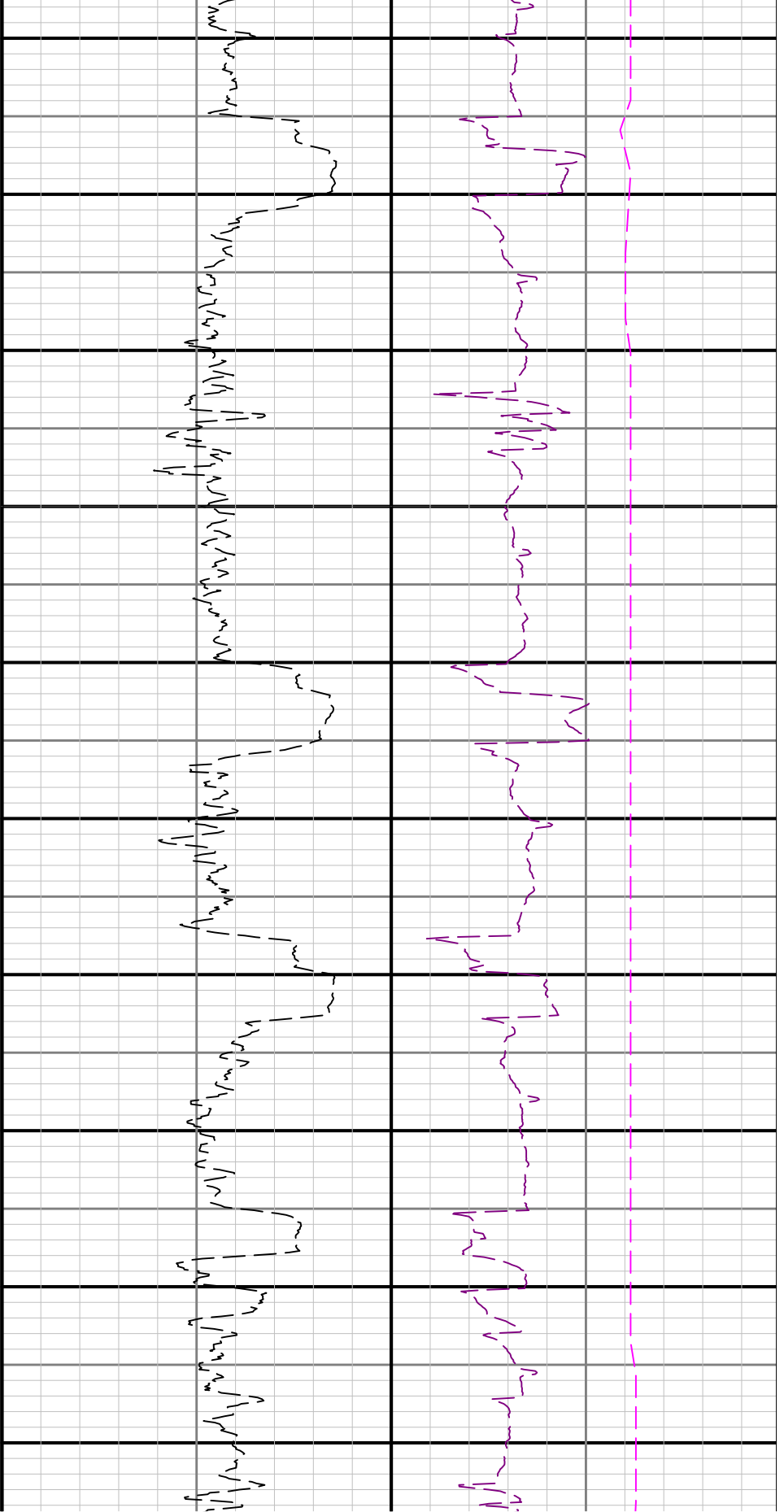




R2<







10250 10300 10350 10400 10450 10500 10550 10600 10650 10700

