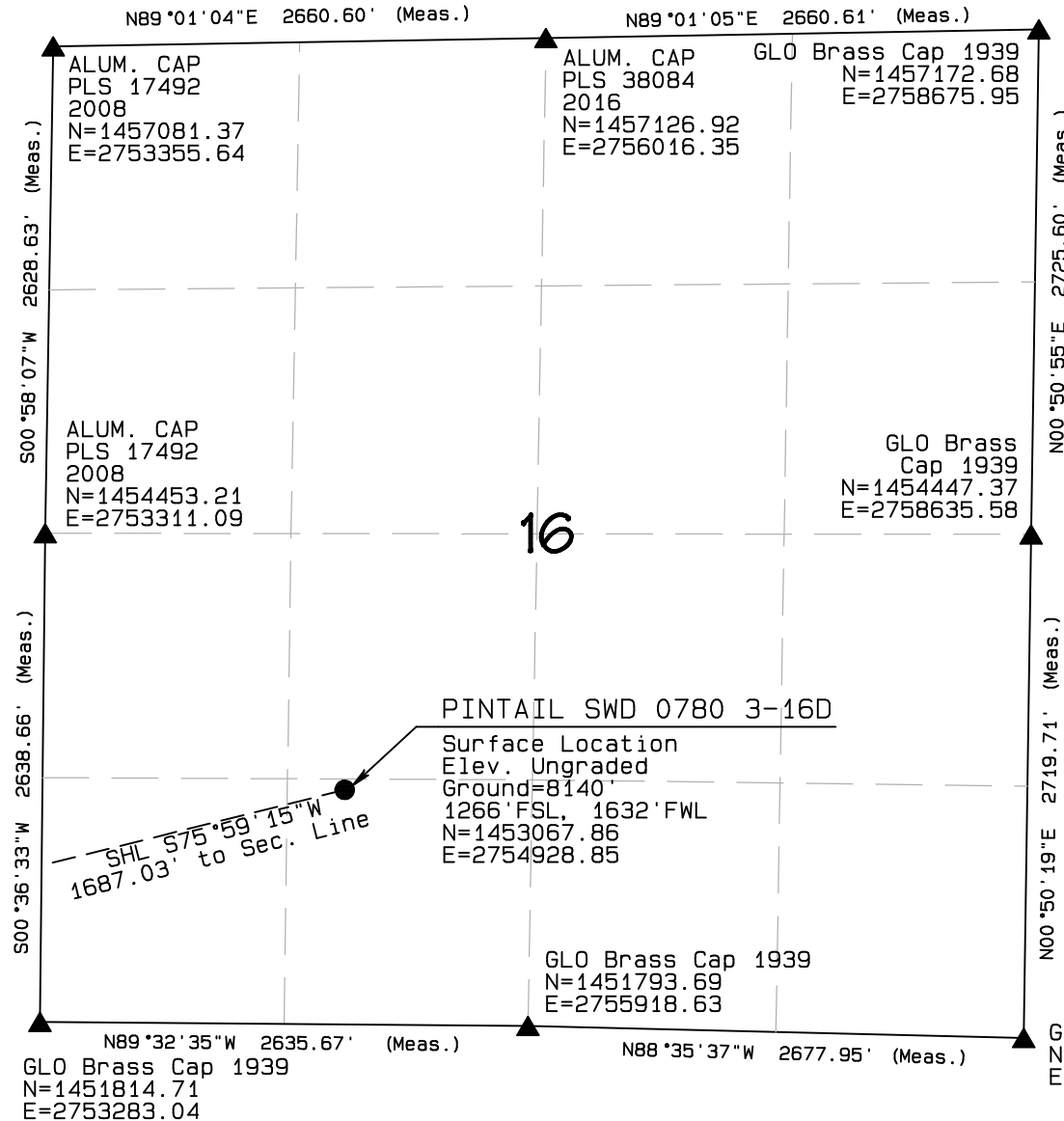


T7N, R80W, 6th P.M.

SandRidge Exploration & Production, LLC

Surface Location, Pintail SWD 0780 3-16D located as shown in the S1/2SW1/4 of SECTION 16,, T7N, R80W, 6th P.M., Jackson County, Colorado.



BASIS OF BEARINGS:

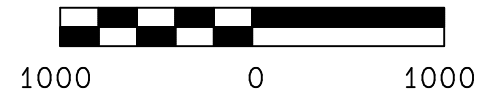
US STATE PLANE 1983
CO NORTH 0501 GRID

BASIS OF ELEVATION

SPOT ELEVATION AT THE NE CORNER OF SECTION 21,
T7N, R80W, 6TH PM, TAKEN FROM THE COALMONT
QUADRANGLE, USGS 7.5 MIN QUAD (TOPOGRAPHIC MAP)
WITH SAID ELEVATION MARKED AS BEING 8223 FEET.

SURFACE USE
AGRICULTURAL/GRAZING

GRAPHIC SCALE 1"=1000'



CERTIFICATE

THIS IS TO CERTIFY THAT THE ABOVE PLAT WAS PREPARED FROM
FIELD NOTES OF ACTUAL SURVEYS MADE BY ME OR UNDER MY
SUPERVISION AND THAT THE SAME ARE TRUE AND CORRECT TO THE
BEST OF MY KNOWLEDGE AND BELIEF.

RANDALL R. MILLER
COLORADO PLS# 38084



LEGEND

FOUND CORNER ▲
PROPOSED WELL ●
PROPOSED BHL/LPL ○
ENTRADA ENTRY POINT △

NAD 83 (TARGET BOTTOM HOLE)

LATITUDE=40.57103°N
LONGITUDE=106.39579°W

NAD 83 (SURFACE LOCATION)

LATITUDE=40.57372°N
LONGITUDE=106.38221°W PDOP=1.232

NAD 83 (ENTRADA ENTRY POINT)

LATITUDE=40.57111°N
LONGITUDE=106.39539°W

NORTH PARK ENGINEERING &
CONSULTING, INC.

P.O. BOX 395
WALDEN, CO 80480
(970) 723-3725

DATE OF FIELD WORK: JUNE 16, 2016 DRAWING COMPLETION: SEPT 28, 2017

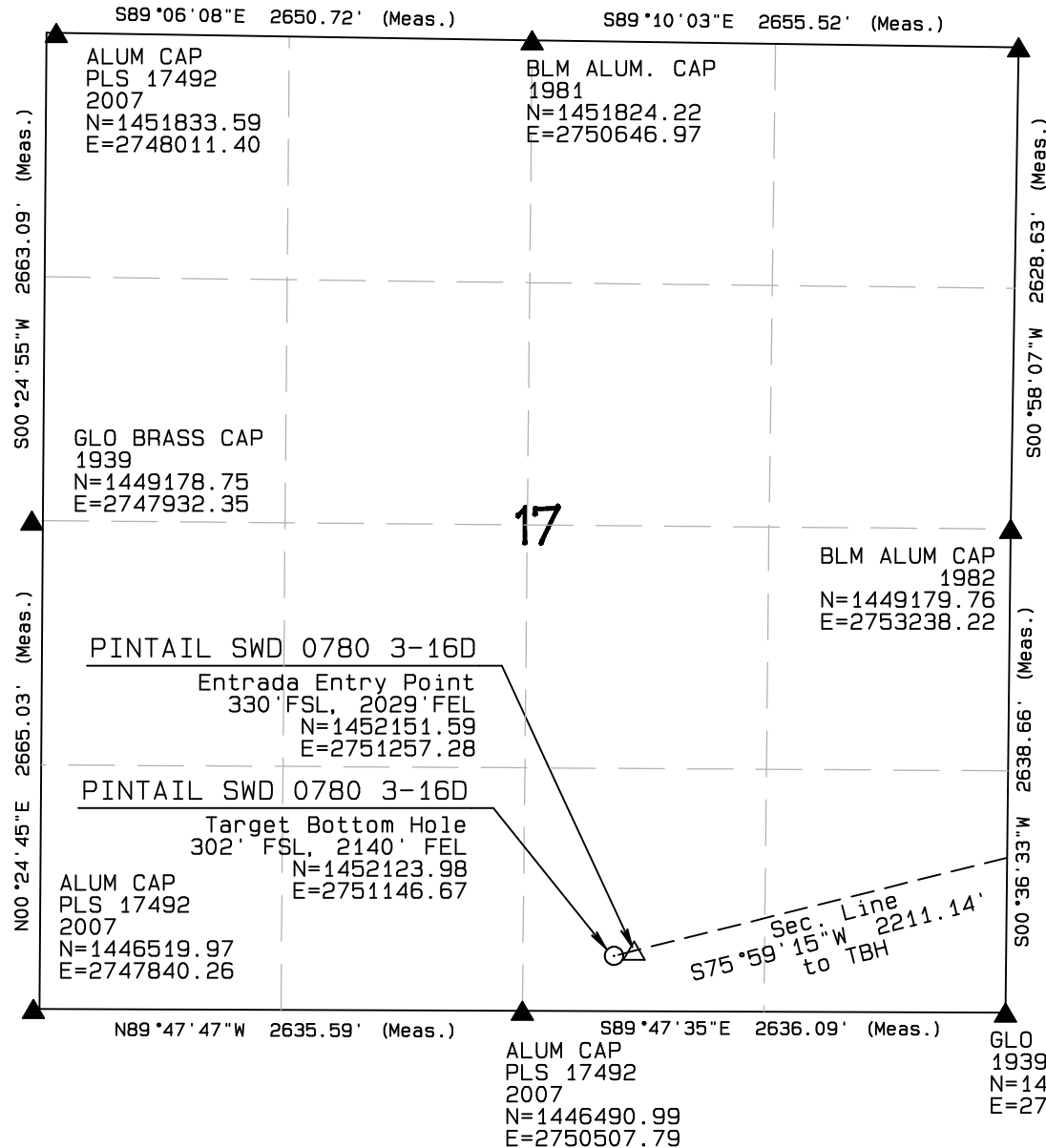
SURVEYED BY: LRK DRAWN BY: ADL CHECKED BY: TKH

T7N, R80W, 6th P.M.

SandRidge Exploration & Production, LLC

GLO Brass Cap 1939
N=1451814.71
E=2753283.04

Bottom Hole Location, PINTAIL SWD 0780 3-16D
located as shown in the S1/2SE1/4 of
SECTION 17, T7N, R80W, 6th P.M.,
Jackson County, Colorado.



BASIS OF BEARINGS:

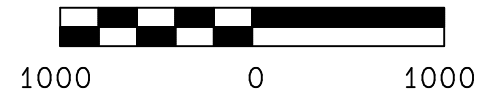
US STATE PLANE 1983
CO NORTH 0501 GRID

BASIS OF ELEVATION

SPOT ELEVATION AT THE NE CORNER OF SECTION 21,
T7N, R80W, 6TH PM, TAKEN FROM THE COALMONT
QUADRANGLE, USGS 7.5 MIN QUAD (TOPOGRAPHIC MAP)
WITH SAID ELEVATION MARKED AS BEING 8223 FEET.

SURFACE USE
AGRICULTURAL/GRAZING

GRAPHIC SCALE 1"=1000'



CERTIFICATE

THIS IS TO CERTIFY THAT THE ABOVE PLAT WAS PREPARED FROM
FIELD NOTES OF ACTUAL SURVEYS MADE BY ME OR UNDER MY
SUPERVISION AND THAT THE SAME ARE TRUE AND CORRECT TO THE
BEST OF MY KNOWLEDGE AND BELIEF.



RANDALL R. MILLER
COLORADO PLS NO. 38084
10/18/2017

LEGEND

FOUND CORNER ▲
PROPOSED WELL ●
PROPOSED BHL/LPL ○
ENTRADA ENTRY POINT △

NAD 83 (TARGET BOTTOM HOLE)

LATITUDE=40.57103°N
LONGITUDE=106.39579°W

NAD 83 (SURFACE LOCATION)

LATITUDE=40.57372°N
LONGITUDE=106.38221°W
PDOP=1.232

NAD 83 (ENTRADA ENTRY POINT)

LATITUDE=40.57111°N
LONGITUDE=106.39539°W

NORTH PARK ENGINEERING &
CONSULTING, INC.

P.O. BOX 395
WALDEN, CO 80480
(970) 723-3725

DATE OF FIELD WORK: JUNE 16, 2016 DRAWING COMPLETION: SEPT 28, 2017

SURVEYED BY: LRK DRAWN BY: ADL CHECKED BY: TKH