

REV: 1 09-27-17 J.L.G. (PAD MOVE & NAME CHANGE)

LEGEND:

 **PROPOSED LOCATION**



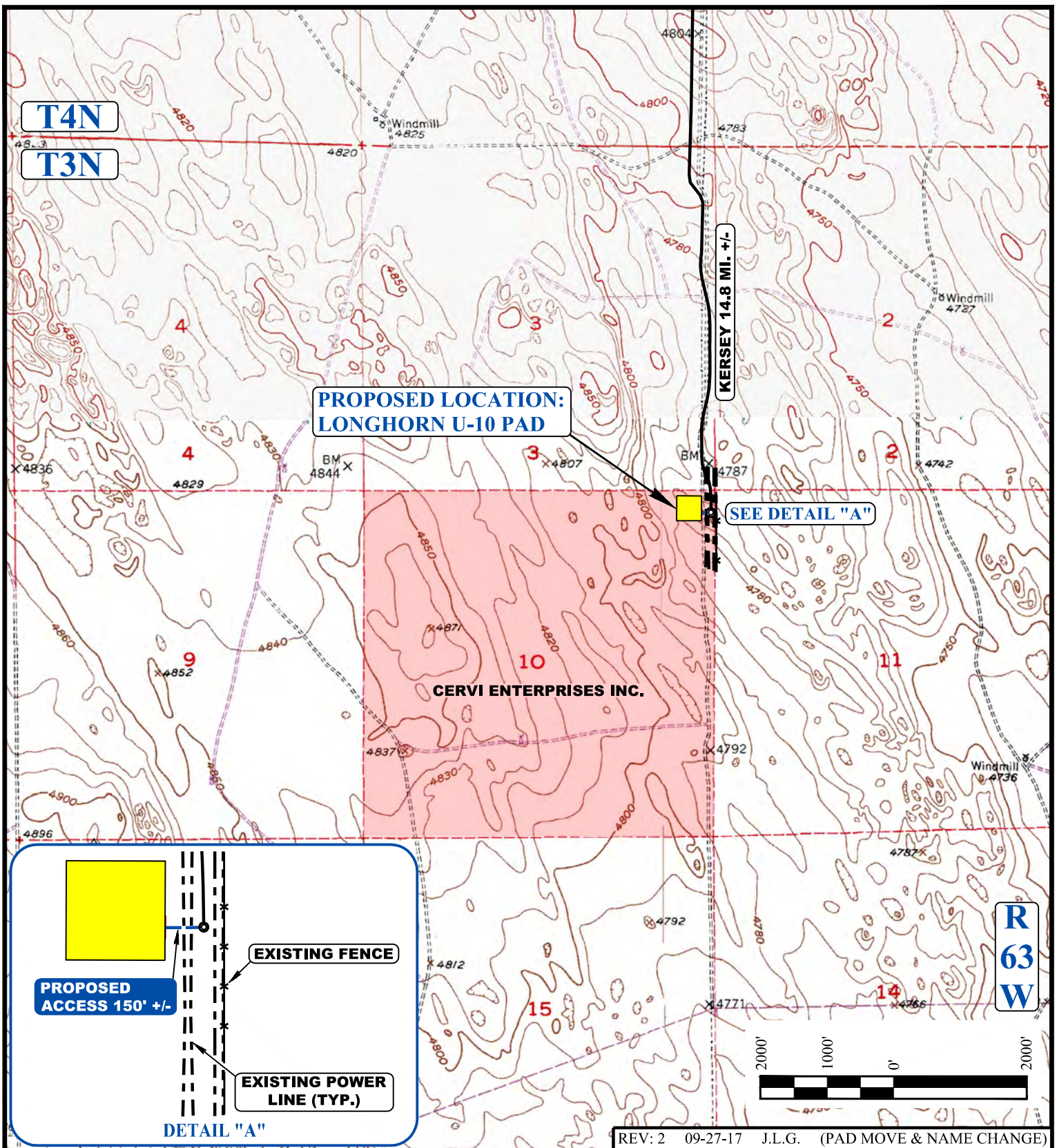
BONANZA CREEK ENERGY OPERATING COMPANY, LLC

LONGHORN U-10 PAD
NE 1/4 NE 1/4, SECTION 10, T3N, R63W, 6th P.M.
WELD COUNTY, COLORADO

SURVEYED BY	J.F.	09-10-17	SCALE
DRAWN BY	L.C.S.	11-22-16	1 : 100,000
ACCESS ROAD MAP			TOPO A



UELS, LLC
Corporate Office * 85 South 200 East
Vernal, UT 84078 * (435) 789-1017



NOTE: PARCEL DATA SHOWN HAS BEEN OBTAINED FROM VARIOUS SOURCES AND SHOULD BE USED FOR MAPPING, GRAPHIC AND PLANNING PURPOSES ONLY. NO WARRANTY IS MADE BY UINTAH ENGINEERING AND LAND SURVEYING (UELS) FOR ACCURACY OF THE PARCEL DATA.

LEGEND:

- EXISTING ROAD
- - - PROPOSED ROAD
- - - EXISTING POWER LINE
- * * * EXISTING FENCE



BONANZA CREEK ENERGY OPERATING COMPANY, LLC

LONGHORN U-10 PAD
NE 1/4 NE 1/4, SECTION 10, T3N, R63W, 6th P.M.
WELD COUNTY, COLORADO

SURVEYED BY	J.F.	09-10-17	SCALE
DRAWN BY	L.C.S.	11-22-16	1 : 24,000
ACCESS ROAD MAP			TOPO B



UELS, LLC
Corporate Office * 85 South 200 East
Vernal, UT 84078 * (435) 789-1017