

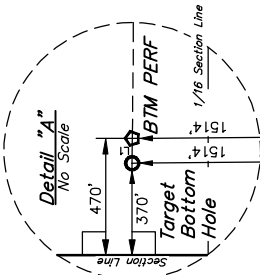
T3N, R68W, 6th P.M.

GREAT WESTERN OPERATING COMPANY

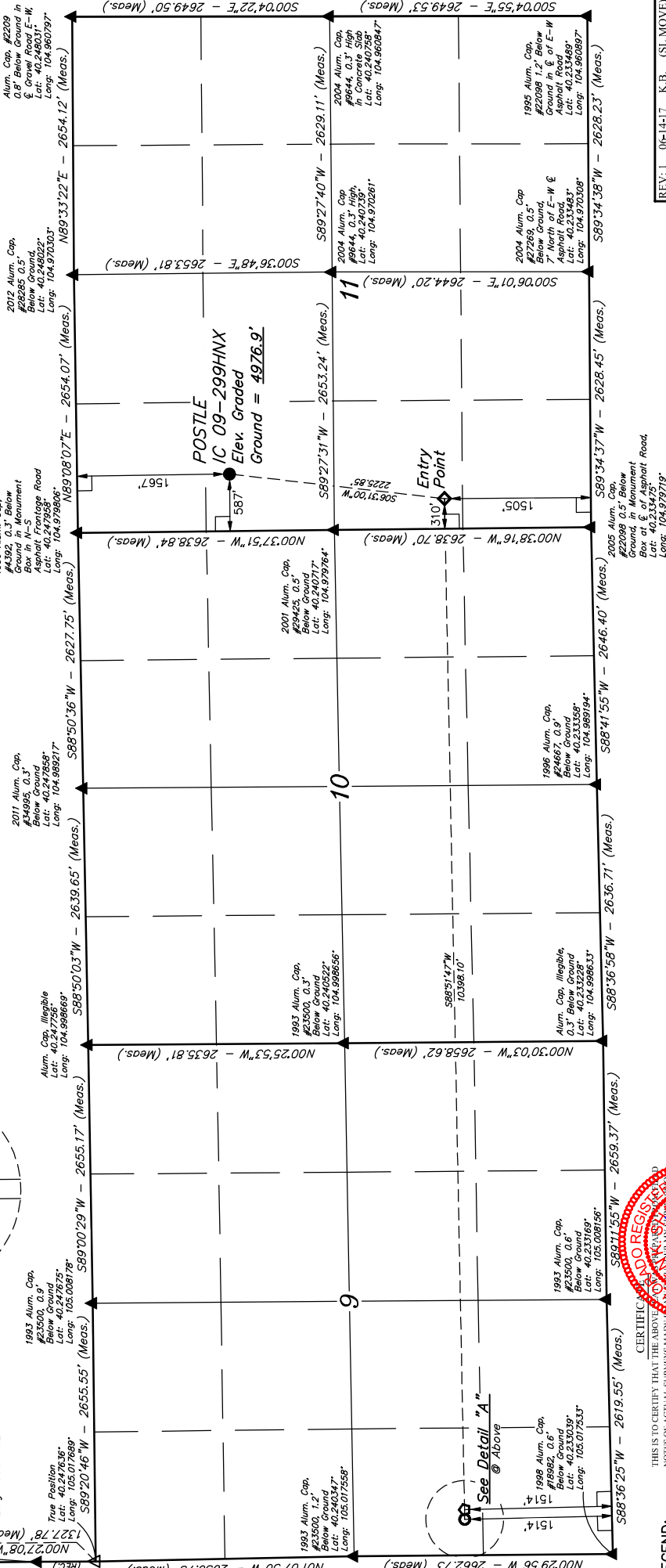
POSTLE IC 09-299HNX  
SW 1/4 NW 1/4, SECTION 11, T3N, R68W, 6th P.M.  
WELD COUNTY, COLORADO

— BASIS OF BEARINGS IS A GPS OBSERVATION  
— BASIS OF ELEVATION  
USGS COOPERATIVE BASE NETWORK CONTROL STATION,  
DESIGNATION "VERMILYEA" NGDS DATA SHEET LISTS THE  
NAVD 88 ELEVATION AS BEING 5026 FEET

LINE TABLE	
LINE	LENGTH
L1	588°51'47"W 100.01'



NW Cor. SW 1/4  
1986 Alum. Cap.  
#23500, 0.9'  
Below Ground  
Lat: 40.251281°  
Long: 105.017697°  
1994 Alum. Cap.  
#23500, 1.2'  
Below Ground  
Lat: 40.249291°  
Long: 105.017692°  
True Position  
1327.78' (Meas.)  
N00°22'08"W  
S89°20'46"W - 2655.55' (Meas.)  
S89°00'29"W - 2655.17' (Meas.)  
1993 Alum. Cap.  
#23500, 0.9'  
Below Ground  
Lat: 40.24783°  
Long: 105.01769°  
Alum. Cap. Illegible  
0.1' Below Ground  
Lat: 40.24756°  
Long: 104.99866°  
2011 Alum. Cap.  
#34995, 0.3'  
Below Ground  
Box in N-S  
Lat: 40.24756°  
Long: 104.99921°  
1998 Alum. Cap.  
#22685, 0.5'  
Below Ground  
Asphalt Frontage Road  
Lat: 40.24756°  
Long: 104.97986°  
2001 Alum. Cap.  
#24667, 0.5'  
Below Ground  
Lat: 40.24071°  
Long: 104.97976°  
2004 Alum. Cap.  
#22685, 0.5'  
Below Ground  
Box in N-S  
Lat: 40.24756°  
Long: 104.97986°  
2012 Alum. Cap.  
#22685, 0.5'  
Below Ground  
Asphalt Frontage Road  
Lat: 40.24756°  
Long: 104.97986°  
2004 Alum. Cap.  
#22685, 0.5'  
Below Ground  
Box in N-S  
Lat: 40.24756°  
Long: 104.97986°  
1995 Alum. Cap.  
#22098, 1.2' Below  
Ground in E-W  
& Gravel Road E-W  
Lat: 40.248031°  
Long: 104.960797°  
Alum. Cap. #2209  
0.8' Below Ground in  
& Gravel Road E-W  
Lat: 40.248031°  
Long: 104.960797°



LEGEND:

- 90° SYMBOL
- PROPOSED WELL-HEAD.
- TARGET BOTTOM HOLE.
- BTM PERF.
- SECTION CORNERS LOCATED. (NAD 83)
- SECTION CORNERS RE-ESTABLISHED. (Not Set on Ground). (NAD 83)

CERTIFICATE OF RECORDING

THIS IS TO CERTIFY THAT THE ABOVE NOTED SURVEY WAS MADE IN ACCORDANCE WITH THE REQUIREMENTS OF THE COLORADO SURVEYING ACT, AND THAT THE SAME ARE TRUE AND CORRECT TO THE BEST OF MY KNOWLEDGE AND BELIEF.

RECORDED LAND SURVEYOR  
REGISTRATION NO. 2835  
STATE OF COLORADO  
JUNTAH ENGINEERING & LAND SURVEYING  
10/25/2017

REV: 1 06-14-17 K.B. (SL MOVE)

UJELLS, LLC  
Corporate Office \* 85 South 200 East  
Vernal, UT 84078 \* (435) 789-1017

SURVEYED BY CHAD MEYERS, D.N.  
DRAWN BY K.B.

SCALE  
03-28-17 1" = 1000'

WELL LOCATION PLAT

NAD 83 (SURFACE LOCATION)	NAD 83 (ENTRY POINT)	NAD 83 (BTM PERF)	NAD 83 (TARGET BOTTOM HOLE)
LATITUDE = 40°14'37.21" (40.243669) LONGITUDE = 104°58'39.64" (104.97678)	LATITUDE = 40°14'15.38" (40.237606) LONGITUDE = 104°58'43.08" (104.978633)	LATITUDE = 40°14'13.99" (40.237219) LONGITUDE = 105°00'57.11" (105.015864)	LATITUDE = 40°14'13.97" (40.237214) LONGITUDE = 105°00'58.40" (105.016222)
LATITUDE = 40°14'37.27" (40.243686) LONGITUDE = 104°58'37.72" (104.977144)	LATITUDE = 40°14'15.44" (40.237622) LONGITUDE = 104°58'41.16" (104.978100)	LATITUDE = 40°14'14.04" (40.237233) LONGITUDE = 105°00'55.18" (105.015328)	LATITUDE = 40°14'14.05" (40.237231) LONGITUDE = 105°00'56.47" (105.015860)