

SRC ENERGY

Location: COLORADO Slot: SLOT#28 TROUDT 2N-29B-L (2122'FNL & 1689'FWL, SEC.27)
Field: WELD COUNTY (NAD83,TRUE NORTH) Well: TROUDT 2N-29B-L
Facility: SEC.27-T06N-R66W Wellbore: TROUDT 2N-29B-L PWB

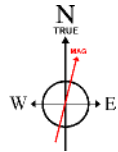
Plot reference wellpath is TROUDT 2N-29B-L PWP (REV-A.0)	Grid System: NAD83 / Lambert Colorado SP, Northern Zone (501), US feet
True vertical depths are referenced to PD 562 (25) (RKB)	* = Wellpath was transformed from a different geoidic datum
Measured depths are referenced to PD 562 (25) (RKB)	North Reference: True north
PD 562 (25) (RKB) to Mean Sea Level: 4739 feet	Scale: True distance
Mean Sea Level to Mud line (At Slot: SLOT#28 TROUDT 2N-29B-L (2122'FNL & 1689'FWL, SEC.27)): 0 feet	Depths are in feet
Coordinates are in feet referenced to Slot	Created by: doddanna on 2017-09-20
	Database: WellArchitectDB

Location Information

Facility Name			Grid East (US ft)	Grid North (US ft)	Latitude	Longitude
SEC.27-T06N-R66W			3203773.744	1412932.710	40°27'52.531"N	104°46'03.497"W
Slot	Local N (ft)	Local E (ft)	Grid East (US ft)	Grid North (US ft)	Latitude	Longitude
SLOT#28 TROUDT 2N-29B-L (2122'FNL & 1689'FWL, SEC.27)	-1361.08	92.39	3203877.364	1411572.487	40°27'39.082"N	104°46'02.302"W
PD 562 (25) (RKB) to Mud line (At Slot: SLOT#28 TROUDT 2N-29B-L (2122'FNL & 1689'FWL, SEC.27))					4739ft	
Mean Sea Level to Mud line (At Slot: SLOT#28 TROUDT 2N-29B-L (2122'FNL & 1689'FWL, SEC.27))					0ft	
PD 562 (25) (RKB) to Mean Sea Level					4739ft	

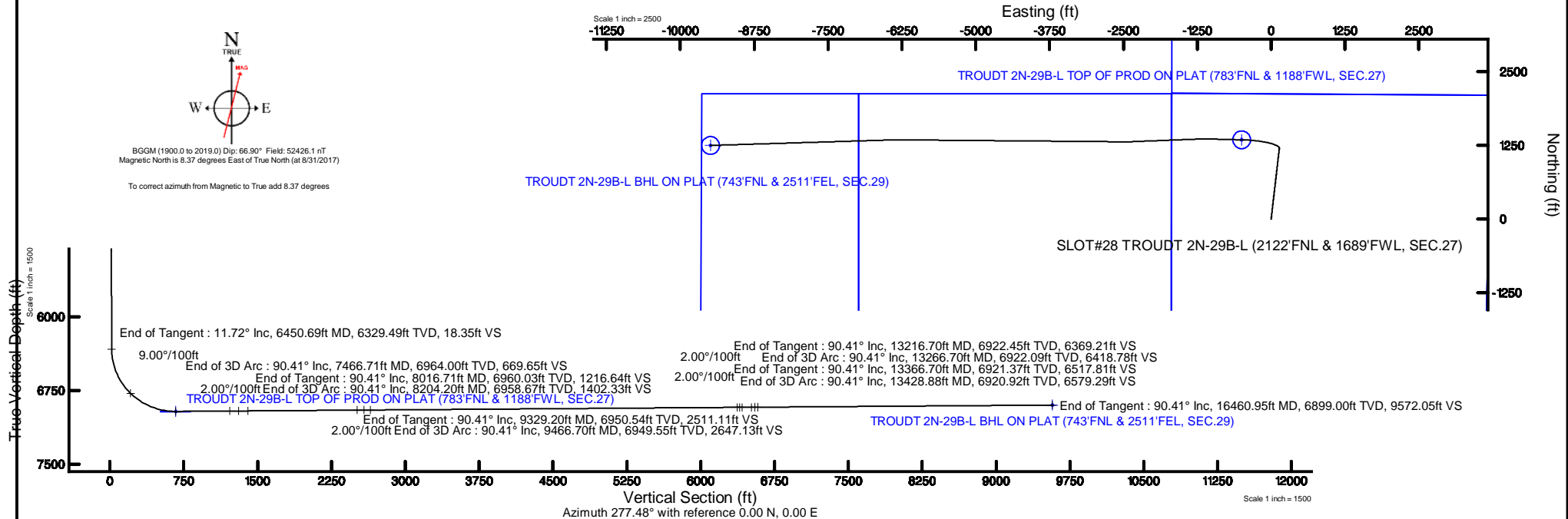
Survey Program

Start MD (ft)	End MD (ft)	Tool	Model	Log Name/Comment	Wellbore
25.00	1750.00	BH# NavTrak	Custom BH# NavTrak (Standard Rotating+Axial Core) (Rockies 0.03Gt model)		TROUDT 2N-29B-L PWB
1750.00	16460.95	BH# AutoTrak Curve	Custom BH# AutoTrak Curve (FR1, Short) (Rockies 0.03Gt model)		TROUDT 2N-29B-L PWB



BGGM (1900.0 to 2019.0) Dip: 66.90° Field: 52426.1 nT
Magnetic North is 8.37 degrees East of True North (at 8/31/2017)

To correct azimuth from Magnetic to True add 8.37 degrees



TROUDT_2N-29B-L_PWP__REV-A.0_.las

~VERSION INFORMATION

VERS. 2.0 : CWLS LOG ASCII STANDARD-VERSION 2.0

WRAP. NO : ASCII DATA SECTION CONTAINS ONE ROW PER WELLPATH STATION

~WELL INFORMATION

#MNEM	.UNITS	DATA	:DESCRIPTION
#----	.-----	----	:-----
STRT	.ft	0.00	:START MD
STOP	.ft	16460.95	:STOP MD
STEP	.ft	0.0	:STEP (non-uniform increment)
NULL	.	-999.99	:NULL
COMP	.	SRC ENERGY	:OPERATOR
WELL	.	TROUDT 2N-29B-L	:WELL
FLD	.	WELD COUNTY (NAD83,TRUE NORTH)	:FIELD
LOC	.	COLORADO	:AREA (aka: Location)
CNTY	.	N/A	:COUNTY
STAT	.	N/A	:STATE
CTRY	.	N/A	:COUNTRY
SRVC	.	Baker Hughes	:CONTRACTOR
DATE	.	09/06/2017	:LOG REV DATE
API	.		:API NUMBER

~OTHER INFORMATION

#Software: WellArchitect(R) Version 5.0

#MNEM	.UNITS	DATA	:DESCRIPTION
#----	.-----	----	:-----
WPTYPE	.	PLANNED WELLPATH	:WELLPATH TYPE
FACILITY	.	SEC.27-T06N-R66W	:FACILITY
SLOT	.	SLOT#28 TROUDT 2N-29B-L (2122'FNL & 1689'FWL, SEC.27):SLOT	:SLOT
WELLBORE	.	TROUDT 2N-29B-L PWB	:WELLBORE
WELLPATH	.	TROUDT 2N-29B-L PWP (REV-A.0)	:WELLPATH
MDREFPT	.	PD 562 (25') (RKB)	:MD REFERENCE POINT
TVDREFPT	.	PD 562 (25') (RKB)	:TVD REFERENCE POINT
LCLREFPT	.	Slot	:LOCAL COORDINATE REFERENCE PT

TROUDT_2N-29B-L_PWP__REV-A.0_.las

VSAZIMUTH.deg	277.48	:VERTICAL SECTION AZIMUTH
VSORIGN .ft	0.00	:VERTICAL SECTION ORIGIN NORTH
VSORIGE .ft	0.00	:VERTICAL SECTION ORIGIN EAST

~CURVE (WELLPATH) INFORMATION

#MNEM	.UNITS	:DESCRIPTION
#----	.-----	:-----
DEPT	.ft	:MEASURED DEPTH
INC	.deg	:INCLINATION
AZI	.deg	:AZIMUTH
TVD	.ft	:TRUE VERTICAL DEPTH
SECT	.ft	:CROSS SECTION (CURTAIN/VERTICAL)
LOCALN	.ft	:LOCAL NORTH
LOCALE	.ft	:LOCAL EAST
LAT	.deg	:LATITUDE
LONG	.deg	:LONGITUDE
DLS	.deg/100ft	:DOGLEG SEVERITY

~ASCII DATA

0.00	0.00	6.61	0.00	0.00	0.00	0.00	40.4608560	-104.7673060	0.00
25.00	0.00	6.61	25.00	0.00	0.00	0.00	40.4608560	-104.7673060	0.00
125.00	0.00	6.61	125.00	0.00	0.00	0.00	40.4608560	-104.7673060	0.00
225.00	0.00	6.61	225.00	0.00	0.00	0.00	40.4608560	-104.7673060	0.00
250.00	0.00	6.61	250.00	0.00	0.00	0.00	40.4608560	-104.7673060	0.00
325.00	1.50	6.61	324.99	0.02	0.98	0.11	40.4608587	-104.7673056	2.00
425.00	3.50	6.61	424.89	0.08	5.31	0.61	40.4608706	-104.7673038	2.00
525.00	5.50	6.61	524.58	0.20	13.10	1.52	40.4608920	-104.7673005	2.00
625.00	7.50	6.61	623.93	0.37	24.35	2.82	40.4609228	-104.7672959	2.00
725.00	9.50	6.61	722.83	0.60	39.03	4.52	40.4609631	-104.7672898	2.00
825.00	11.50	6.61	821.15	0.88	57.13	6.62	40.4610128	-104.7672822	2.00
836.16	11.72	6.61	832.08	0.91	59.36	6.88	40.4610189	-104.7672813	2.00
925.00	11.72	6.61	919.07	1.19	77.29	8.95	40.4610682	-104.7672738	0.00
1025.00	11.72	6.61	1016.98	1.50	97.48	11.29	40.4611236	-104.7672654	0.00
1125.00	11.72	6.61	1114.89	1.81	117.66	13.63	40.4611790	-104.7672570	0.00

TROUDT_2N-29B-L_PWP__REV-A.0_.las

1225.00	11.72	6.61	1212.81	2.12	137.84	15.97	40.4612344	-104.7672486	0.00
1325.00	11.72	6.61	1310.72	2.43	158.03	18.31	40.4612898	-104.7672402	0.00
1425.00	11.72	6.61	1408.64	2.74	178.21	20.64	40.4613452	-104.7672318	0.00
1525.00	11.72	6.61	1506.55	3.05	198.39	22.98	40.4614006	-104.7672234	0.00
1625.00	11.72	6.61	1604.46	3.36	218.58	25.32	40.4614560	-104.7672150	0.00
1725.00	11.72	6.61	1702.38	3.67	238.76	27.66	40.4615114	-104.7672066	0.00
1825.00	11.72	6.61	1800.29	3.98	258.94	30.00	40.4615668	-104.7671982	0.00
1925.00	11.72	6.61	1898.21	4.29	279.13	32.33	40.4616222	-104.7671898	0.00
2025.00	11.72	6.61	1996.12	4.61	299.31	34.67	40.4616776	-104.7671814	0.00
2125.00	11.72	6.61	2094.03	4.92	319.49	37.01	40.4617330	-104.7671730	0.00
2225.00	11.72	6.61	2191.95	5.23	339.68	39.35	40.4617884	-104.7671646	0.00
2325.00	11.72	6.61	2289.86	5.54	359.86	41.69	40.4618438	-104.7671562	0.00
2425.00	11.72	6.61	2387.78	5.85	380.04	44.03	40.4618992	-104.7671478	0.00
2525.00	11.72	6.61	2485.69	6.16	400.23	46.36	40.4619546	-104.7671394	0.00
2625.00	11.72	6.61	2583.60	6.47	420.41	48.70	40.4620100	-104.7671310	0.00
2725.00	11.72	6.61	2681.52	6.78	440.59	51.04	40.4620654	-104.7671226	0.00
2825.00	11.72	6.61	2779.43	7.09	460.78	53.38	40.4621208	-104.7671142	0.00
2925.00	11.72	6.61	2877.35	7.40	480.96	55.72	40.4621762	-104.7671058	0.00
3025.00	11.72	6.61	2975.26	7.71	501.14	58.05	40.4622316	-104.7670974	0.00
3125.00	11.72	6.61	3073.18	8.02	521.33	60.39	40.4622870	-104.7670890	0.00
3225.00	11.72	6.61	3171.09	8.33	541.51	62.73	40.4623424	-104.7670806	0.00
3325.00	11.72	6.61	3269.00	8.64	561.69	65.07	40.4623978	-104.7670722	0.00
3425.00	11.72	6.61	3366.92	8.95	581.88	67.41	40.4624532	-104.7670638	0.00
3525.00	11.72	6.61	3464.83	9.26	602.06	69.74	40.4625086	-104.7670554	0.00
3625.00	11.72	6.61	3562.75	9.57	622.24	72.08	40.4625640	-104.7670470	0.00
3725.00	11.72	6.61	3660.66	9.88	642.43	74.42	40.4626194	-104.7670386	0.00
3825.00	11.72	6.61	3758.57	10.20	662.61	76.76	40.4626748	-104.7670302	0.00
3925.00	11.72	6.61	3856.49	10.51	682.79	79.10	40.4627302	-104.7670217	0.00
4025.00	11.72	6.61	3954.40	10.82	702.98	81.44	40.4627856	-104.7670133	0.00
4125.00	11.72	6.61	4052.32	11.13	723.16	83.77	40.4628410	-104.7670049	0.00
4225.00	11.72	6.61	4150.23	11.44	743.34	86.11	40.4628964	-104.7669965	0.00
4325.00	11.72	6.61	4248.14	11.75	763.53	88.45	40.4629518	-104.7669881	0.00
4425.00	11.72	6.61	4346.06	12.06	783.71	90.79	40.4630072	-104.7669797	0.00
4525.00	11.72	6.61	4443.97	12.37	803.89	93.13	40.4630626	-104.7669713	0.00

TROUDT_2N-29B-L_PWP__REV-A.0_.las

4625.00	11.72	6.61	4541.89	12.68	824.08	95.46	40.4631180	-104.7669629	0.00
4725.00	11.72	6.61	4639.80	12.99	844.26	97.80	40.4631734	-104.7669545	0.00
4825.00	11.72	6.61	4737.71	13.30	864.44	100.14	40.4632288	-104.7669461	0.00
4925.00	11.72	6.61	4835.63	13.61	884.63	102.48	40.4632842	-104.7669377	0.00
5025.00	11.72	6.61	4933.54	13.92	904.81	104.82	40.4633396	-104.7669293	0.00
5125.00	11.72	6.61	5031.46	14.23	924.99	107.15	40.4633950	-104.7669209	0.00
5225.00	11.72	6.61	5129.37	14.54	945.18	109.49	40.4634504	-104.7669125	0.00
5325.00	11.72	6.61	5227.28	14.85	965.36	111.83	40.4635058	-104.7669041	0.00
5425.00	11.72	6.61	5325.20	15.16	985.54	114.17	40.4635612	-104.7668957	0.00
5525.00	11.72	6.61	5423.11	15.47	1005.73	116.51	40.4636166	-104.7668873	0.00
5625.00	11.72	6.61	5521.03	15.79	1025.91	118.84	40.4636720	-104.7668789	0.00
5725.00	11.72	6.61	5618.94	16.10	1046.09	121.18	40.4637274	-104.7668705	0.00
5825.00	11.72	6.61	5716.85	16.41	1066.28	123.52	40.4637828	-104.7668621	0.00
5925.00	11.72	6.61	5814.77	16.72	1086.46	125.86	40.4638382	-104.7668537	0.00
6025.00	11.72	6.61	5912.68	17.03	1106.64	128.20	40.4638936	-104.7668453	0.00
6125.00	11.72	6.61	6010.60	17.34	1126.83	130.54	40.4639490	-104.7668369	0.00
6225.00	11.72	6.61	6108.51	17.65	1147.01	132.87	40.4640044	-104.7668285	0.00
6325.00	11.72	6.61	6206.43	17.96	1167.19	135.21	40.4640598	-104.7668201	0.00
6425.00	11.72	6.61	6304.34	18.27	1187.38	137.55	40.4641152	-104.7668117	0.00
6450.69	11.72	6.61	6329.49	18.35	1192.56	138.15	40.4641294	-104.7668095	0.00
6525.00	12.97	335.46	6402.16	22.89	1207.66	135.55	40.4641709	-104.7668188	9.00
6625.00	18.67	309.30	6498.46	42.48	1228.05	118.47	40.4642268	-104.7668802	9.00
6725.00	26.24	296.38	6590.86	77.07	1248.05	86.21	40.4642817	-104.7669962	9.00
6825.00	34.48	289.11	6677.10	125.81	1267.17	39.57	40.4643342	-104.7671638	9.00
6925.00	42.99	284.40	6755.06	187.50	1284.95	-20.32	40.4643830	-104.7673790	9.00
7025.00	51.64	281.00	6822.81	260.63	1300.95	-91.97	40.4644269	-104.7676365	9.00
7125.00	60.36	278.34	6878.68	343.38	1314.76	-173.62	40.4644648	-104.7679300	9.00
7225.00	69.13	276.11	6921.31	433.72	1326.06	-263.26	40.4644959	-104.7682521	9.00
7325.00	77.93	274.12	6949.63	529.44	1334.56	-358.68	40.4645192	-104.7685950	9.00
7425.00	86.74	272.26	6962.96	628.16	1340.05	-457.53	40.4645342	-104.7689503	9.00
7466.71	90.41	271.50	6964.00	669.65	1341.42	-499.19	40.4645380	-104.7691000	9.00
7525.00	90.41	271.50	6963.58	727.62	1342.94	-557.46	40.4645422	-104.7693094	0.00
7625.00	90.41	271.50	6962.86	827.08	1345.56	-657.43	40.4645494	-104.7696687	0.00
7725.00	90.41	271.50	6962.13	926.53	1348.18	-757.39	40.4645565	-104.7700279	0.00

TROUDT_2N-29B-L_PWP__REV-A.0_.las

7825.00	90.41	271.50	6961.41	1025.98	1350.80	-857.35	40.4645637	-104.7703872	0.00
7925.00	90.41	271.50	6960.69	1125.43	1353.41	-957.32	40.4645709	-104.7707464	0.00
8016.71	90.41	271.50	6960.03	1216.64	1355.81	-1048.99	40.4645775	-104.7710759	0.00
8025.00	90.41	271.33	6959.97	1224.89	1356.02	-1057.28	40.4645780	-104.7711057	2.00
8125.00	90.41	269.33	6959.24	1324.10	1356.60	-1157.27	40.4645796	-104.7714650	2.00
8204.20	90.41	267.75	6958.67	1402.33	1354.59	-1236.44	40.4645741	-104.7717495	2.00
8225.00	90.41	267.75	6958.52	1422.83	1353.77	-1257.22	40.4645718	-104.7718242	0.00
8325.00	90.41	267.75	6957.80	1521.39	1349.84	-1357.14	40.4645610	-104.7721833	0.00
8425.00	90.41	267.75	6957.08	1619.95	1345.92	-1457.06	40.4645503	-104.7725424	0.00
8525.00	90.41	267.75	6956.35	1718.51	1341.99	-1556.98	40.4645395	-104.7729015	0.00
8625.00	90.41	267.75	6955.63	1817.06	1338.07	-1656.90	40.4645287	-104.7732606	0.00
8725.00	90.41	267.75	6954.91	1915.62	1334.14	-1756.82	40.4645179	-104.7736197	0.00
8825.00	90.41	267.75	6954.19	2014.18	1330.22	-1856.74	40.4645071	-104.7739788	0.00
8925.00	90.41	267.75	6953.46	2112.74	1326.29	-1956.66	40.4644963	-104.7743379	0.00
9025.00	90.41	267.75	6952.74	2211.30	1322.36	-2056.58	40.4644855	-104.7746970	0.00
9125.00	90.41	267.75	6952.02	2309.85	1318.44	-2156.51	40.4644747	-104.7750561	0.00
9225.00	90.41	267.75	6951.29	2408.41	1314.51	-2256.43	40.4644639	-104.7754152	0.00
9325.00	90.41	267.75	6950.57	2506.97	1310.59	-2356.35	40.4644531	-104.7757743	0.00
9329.20	90.41	267.75	6950.54	2511.11	1310.42	-2360.54	40.4644526	-104.7757893	0.00
9425.00	90.41	269.67	6949.85	2605.78	1308.26	-2456.31	40.4644467	-104.7761335	2.00
9466.70	90.41	270.50	6949.55	2647.13	1308.32	-2498.01	40.4644468	-104.7762834	2.00
9525.00	90.41	270.50	6949.13	2705.00	1308.83	-2556.31	40.4644482	-104.7764929	0.00
9625.00	90.41	270.50	6948.40	2804.25	1309.70	-2656.30	40.4644506	-104.7768522	0.00
9725.00	90.41	270.50	6947.68	2903.51	1310.58	-2756.29	40.4644529	-104.7772116	0.00
9825.00	90.41	270.50	6946.96	3002.76	1311.45	-2856.29	40.4644553	-104.7775710	0.00
9925.00	90.41	270.50	6946.24	3102.02	1312.32	-2956.28	40.4644577	-104.7779303	0.00
10025.00	90.41	270.50	6945.51	3201.28	1313.19	-3056.27	40.4644600	-104.7782897	0.00
10125.00	90.41	270.50	6944.79	3300.53	1314.07	-3156.27	40.4644624	-104.7786490	0.00
10225.00	90.41	270.50	6944.07	3399.79	1314.94	-3256.26	40.4644647	-104.7790084	0.00
10325.00	90.41	270.50	6943.35	3499.04	1315.81	-3356.25	40.4644671	-104.7793677	0.00
10425.00	90.41	270.50	6942.62	3598.30	1316.68	-3456.25	40.4644695	-104.7797271	0.00
10525.00	90.41	270.50	6941.90	3697.55	1317.56	-3556.24	40.4644718	-104.7800865	0.00
10625.00	90.41	270.50	6941.18	3796.81	1318.43	-3656.24	40.4644742	-104.7804458	0.00
10725.00	90.41	270.50	6940.46	3896.06	1319.30	-3756.23	40.4644765	-104.7808052	0.00

TROUDT_2N-29B-L_PWP__REV-A.0_.las

10825.00	90.41	270.50	6939.73	3995.32	1320.17	-3856.22	40.4644789	-104.7811645	0.00
10925.00	90.41	270.50	6939.01	4094.57	1321.05	-3956.22	40.4644812	-104.7815239	0.00
11025.00	90.41	270.50	6938.29	4193.83	1321.92	-4056.21	40.4644836	-104.7818833	0.00
11125.00	90.41	270.50	6937.57	4293.09	1322.79	-4156.20	40.4644859	-104.7822426	0.00
11225.00	90.41	270.50	6936.84	4392.34	1323.66	-4256.20	40.4644883	-104.7826020	0.00
11325.00	90.41	270.50	6936.12	4491.60	1324.54	-4356.19	40.4644906	-104.7829613	0.00
11425.00	90.41	270.50	6935.40	4590.85	1325.41	-4456.18	40.4644930	-104.7833207	0.00
11525.00	90.41	270.50	6934.68	4690.11	1326.28	-4556.18	40.4644953	-104.7836800	0.00
11625.00	90.41	270.50	6933.95	4789.36	1327.16	-4656.17	40.4644977	-104.7840394	0.00
11725.00	90.41	270.50	6933.23	4888.62	1328.03	-4756.16	40.4645000	-104.7843988	0.00
11825.00	90.41	270.50	6932.51	4987.87	1328.90	-4856.16	40.4645023	-104.7847581	0.00
11925.00	90.41	270.50	6931.79	5087.13	1329.77	-4956.15	40.4645047	-104.7851175	0.00
12025.00	90.41	270.50	6931.06	5186.39	1330.65	-5056.15	40.4645070	-104.7854768	0.00
12125.00	90.41	270.50	6930.34	5285.64	1331.52	-5156.14	40.4645094	-104.7858362	0.00
12225.00	90.41	270.50	6929.62	5384.90	1332.39	-5256.13	40.4645117	-104.7861956	0.00
12325.00	90.41	270.50	6928.90	5484.15	1333.26	-5356.13	40.4645140	-104.7865549	0.00
12425.00	90.41	270.50	6928.17	5583.41	1334.14	-5456.12	40.4645164	-104.7869143	0.00
12525.00	90.41	270.50	6927.45	5682.66	1335.01	-5556.11	40.4645187	-104.7872736	0.00
12625.00	90.41	270.50	6926.73	5781.92	1335.88	-5656.11	40.4645210	-104.7876330	0.00
12725.00	90.41	270.50	6926.01	5881.17	1336.75	-5756.10	40.4645234	-104.7879924	0.00
12825.00	90.41	270.50	6925.28	5980.43	1337.63	-5856.09	40.4645257	-104.7883517	0.00
12925.00	90.41	270.50	6924.56	6079.68	1338.50	-5956.09	40.4645280	-104.7887111	0.00
13025.00	90.41	270.50	6923.84	6178.94	1339.37	-6056.08	40.4645304	-104.7890704	0.00
13125.00	90.41	270.50	6923.11	6278.20	1340.24	-6156.07	40.4645327	-104.7894298	0.00
13216.70	90.41	270.50	6922.45	6369.21	1341.05	-6247.77	40.4645348	-104.7897593	0.00
13225.00	90.41	270.33	6922.39	6377.45	1341.11	-6256.07	40.4645350	-104.7897891	2.00
13266.70	90.41	269.50	6922.09	6418.78	1341.05	-6297.76	40.4645348	-104.7899390	2.00
13325.00	90.41	269.50	6921.67	6476.52	1340.54	-6356.06	40.4645333	-104.7901485	0.00
13366.70	90.41	269.50	6921.37	6517.81	1340.17	-6397.76	40.4645323	-104.7902983	0.00
13425.00	90.41	268.33	6920.95	6575.46	1339.07	-6456.05	40.4645293	-104.7905078	2.00
13428.88	90.41	268.26	6920.92	6579.29	1338.95	-6459.93	40.4645289	-104.7905218	2.00
13525.00	90.41	268.26	6920.22	6674.16	1336.03	-6556.00	40.4645208	-104.7908670	0.00
13625.00	90.41	268.26	6919.50	6772.87	1332.99	-6655.95	40.4645124	-104.7912262	0.00
13725.00	90.41	268.26	6918.78	6871.57	1329.94	-6755.90	40.4645040	-104.7915854	0.00

TROUDT_2N-29B-L_PWP__REV-A.0_.las

13825.00	90.41	268.26	6918.06	6970.27	1326.90	-6855.85	40.4644956	-104.7919446	0.00
13925.00	90.41	268.26	6917.33	7068.98	1323.86	-6955.80	40.4644871	-104.7923038	0.00
14025.00	90.41	268.26	6916.61	7167.68	1320.82	-7055.75	40.4644787	-104.7926630	0.00
14125.00	90.41	268.26	6915.89	7266.38	1317.77	-7155.71	40.4644703	-104.7930222	0.00
14225.00	90.41	268.26	6915.16	7365.09	1314.73	-7255.66	40.4644618	-104.7933815	0.00
14325.00	90.41	268.26	6914.44	7463.79	1311.69	-7355.61	40.4644534	-104.7937407	0.00
14425.00	90.41	268.26	6913.72	7562.49	1308.64	-7455.56	40.4644450	-104.7940999	0.00
14525.00	90.41	268.26	6913.00	7661.20	1305.60	-7555.51	40.4644365	-104.7944591	0.00
14625.00	90.41	268.26	6912.27	7759.90	1302.56	-7655.46	40.4644281	-104.7948183	0.00
14725.00	90.41	268.26	6911.55	7858.60	1299.52	-7755.41	40.4644197	-104.7951775	0.00
14825.00	90.41	268.26	6910.83	7957.31	1296.47	-7855.36	40.4644112	-104.7955367	0.00
14925.00	90.41	268.26	6910.10	8056.01	1293.43	-7955.31	40.4644028	-104.7958959	0.00
15025.00	90.41	268.26	6909.38	8154.71	1290.39	-8055.26	40.4643943	-104.7962551	0.00
15125.00	90.41	268.26	6908.66	8253.42	1287.34	-8155.22	40.4643859	-104.7966143	0.00
15225.00	90.41	268.26	6907.93	8352.12	1284.30	-8255.17	40.4643774	-104.7969735	0.00
15325.00	90.41	268.26	6907.21	8450.83	1281.26	-8355.12	40.4643690	-104.7973327	0.00
15425.00	90.41	268.26	6906.49	8549.53	1278.22	-8455.07	40.4643606	-104.7976919	0.00
15525.00	90.41	268.26	6905.77	8648.23	1275.17	-8555.02	40.4643521	-104.7980511	0.00
15625.00	90.41	268.26	6905.04	8746.94	1272.13	-8654.97	40.4643437	-104.7984103	0.00
15725.00	90.41	268.26	6904.32	8845.64	1269.09	-8754.92	40.4643352	-104.7987695	0.00
15825.00	90.41	268.26	6903.60	8944.34	1266.04	-8854.87	40.4643268	-104.7991287	0.00
15925.00	90.41	268.26	6902.87	9043.05	1263.00	-8954.82	40.4643183	-104.7994879	0.00
16025.00	90.41	268.26	6902.15	9141.75	1259.96	-9054.78	40.4643099	-104.7998471	0.00
16125.00	90.41	268.26	6901.43	9240.45	1256.92	-9154.73	40.4643014	-104.8002063	0.00
16225.00	90.41	268.26	6900.71	9339.16	1253.87	-9254.68	40.4642930	-104.8005655	0.00
16325.00	90.41	268.26	6899.98	9437.86	1250.83	-9354.63	40.4642845	-104.8009247	0.00
16425.00	90.41	268.26	6899.26	9536.56	1247.79	-9454.58	40.4642760	-104.8012839	0.00
16460.95	90.41	268.26	6899.00	9572.05	1246.69	-9490.51	40.4642730	-104.8014130	0.00



Planned Wellpath Report

TROUDT 2N-29B-L PWP (REV-A.0)

Page 1 of 8



REFERENCE WELLPATH IDENTIFICATION

Operator	SRC ENERGY	Slot	SLOT#28 TROUDT 2N-29B-L (2122'FNL & 1689'FWL, SEC.27)
Area	COLORADO	Well	TROUDT 2N-29B-L
Field	WELD COUNTY (NAD83, TRUE NORTH)	Wellbore	TROUDT 2N-29B-L PWB
Facility	SEC.27-T06N-R66W		

REPORT SETUP INFORMATION

Projection System	NAD83 / Lambert Colorado SP, Northern Zone (501), US feet	Software System	WellArchitect® 5.0
North Reference	True	User	Doddanna
Scale	0.999964	Report Generated	9/20/2017 at 1:31:00 PM
Convergence at slot	0.47° East	Database/Source file	WellArchitectDB/TROUDT_2N-29B-L_PWP__REV-A.0_.xml

WELLPATH LOCATION

	Local coordinates		Grid coordinates		Geographic coordinates	
	North[ft]	East[ft]	Easting[US ft]	Northing[US ft]	Latitude	Longitude
Slot Location	-1361.08	92.39	3203877.36	1411572.49	40°27'39.082"N	104°46'02.302"W
Facility Reference Pt			3203773.74	1412932.71	40°27'52.531"N	104°46'03.497"W
Field Reference Pt			3171284.48	1426358.81	40°30'07.643"N	104°53'02.634"W

WELLPATH DATUM

Calculation method	Minimum curvature	PD 562 (25') (RKB) to Facility Vertical Datum	4739.00ft
Horizontal Reference Pt	Slot	PD 562 (25') (RKB) to Mean Sea Level	4739.00ft
Vertical Reference Pt	PD 562 (25') (RKB)	PD 562 (25') (RKB) to Mud Line at Slot (SLOT#28 TROUDT 2N-29B-L (2122'FNL & 1689'FWL, SEC.27))	4739.00ft
MD Reference Pt	PD 562 (25') (RKB)	Section Origin	N 0.00, E 0.00 ft
Field Vertical Reference	Mean Sea Level	Section Azimuth	277.48°



Planned Wellpath Report

TROUDT 2N-29B-L PWP (REV-A.0)

Page 2 of 8



REFERENCE WELLPATH IDENTIFICATION			
Operator	SRC ENERGY	Slot	SLOT#28 TROUDT 2N-29B-L (2122'FNL & 1689'FWL, SEC.27)
Area	COLORADO	Well	TROUDT 2N-29B-L
Field	WELD COUNTY (NAD83,TRUE NORTH)	Wellbore	TROUDT 2N-29B-L PWB
Facility	SEC.27-T06N-R66W		

WELLPATH DATA (179 stations) † = interpolated/extrapolated station								
MD [ft]	Inclination [°]	Azimuth [°]	TVD [ft]	Vert Sect [ft]	North [ft]	East [ft]	DLS [°/100ft]	Comments
0.00†	0.000	6.608	0.00	0.00	0.00	0.00	0.00	
25.00	0.000	6.608	25.00	0.00	0.00	0.00	0.00	Tie On
125.00†	0.000	6.608	125.00	0.00	0.00	0.00	0.00	
225.00†	0.000	6.608	225.00	0.00	0.00	0.00	0.00	
250.00	0.000	6.608	250.00	0.00	0.00	0.00	0.00	End of Tangent
325.00†	1.500	6.608	324.99	0.02	0.98	0.11	2.00	
425.00†	3.500	6.608	424.89	0.08	5.31	0.61	2.00	
525.00†	5.500	6.608	524.58	0.20	13.10	1.52	2.00	
625.00†	7.500	6.608	623.93	0.37	24.35	2.82	2.00	
725.00†	9.500	6.608	722.83	0.60	39.03	4.52	2.00	
825.00†	11.500	6.608	821.15	0.88	57.13	6.62	2.00	
836.16	11.723	6.608	832.08	0.91	59.36	6.88	2.00	End of Build
925.00†	11.723	6.608	919.07	1.19	77.29	8.95	0.00	
1025.00†	11.723	6.608	1016.98	1.50	97.48	11.29	0.00	
1125.00†	11.723	6.608	1114.89	1.81	117.66	13.63	0.00	
1225.00†	11.723	6.608	1212.81	2.12	137.84	15.97	0.00	
1325.00†	11.723	6.608	1310.72	2.43	158.03	18.31	0.00	
1425.00†	11.723	6.608	1408.64	2.74	178.21	20.64	0.00	
1525.00†	11.723	6.608	1506.55	3.05	198.39	22.98	0.00	
1625.00†	11.723	6.608	1604.46	3.36	218.58	25.32	0.00	
1725.00†	11.723	6.608	1702.38	3.67	238.76	27.66	0.00	
1825.00†	11.723	6.608	1800.29	3.98	258.94	30.00	0.00	
1925.00†	11.723	6.608	1898.21	4.29	279.13	32.33	0.00	
2025.00†	11.723	6.608	1996.12	4.61	299.31	34.67	0.00	
2125.00†	11.723	6.608	2094.03	4.92	319.49	37.01	0.00	
2225.00†	11.723	6.608	2191.95	5.23	339.68	39.35	0.00	
2325.00†	11.723	6.608	2289.86	5.54	359.86	41.69	0.00	
2425.00†	11.723	6.608	2387.78	5.85	380.04	44.03	0.00	
2525.00†	11.723	6.608	2485.69	6.16	400.23	46.36	0.00	
2625.00†	11.723	6.608	2583.60	6.47	420.41	48.70	0.00	



Planned Wellpath Report

TROUDT 2N-29B-L PWP (REV-A.0)

Page 3 of 8



REFERENCE WELLPATH IDENTIFICATION			
Operator	SRC ENERGY	Slot	SLOT#28 TROUDT 2N-29B-L (2122'FNL & 1689'FWL, SEC.27)
Area	COLORADO	Well	TROUDT 2N-29B-L
Field	WELD COUNTY (NAD83,TRUE NORTH)	Wellbore	TROUDT 2N-29B-L PWB
Facility	SEC.27-T06N-R66W		

WELLPATH DATA (179 stations) † = interpolated/extrapolated station								
MD [ft]	Inclination [°]	Azimuth [°]	TVD [ft]	Vert Sect [ft]	North [ft]	East [ft]	DLS [°/100ft]	Comments
2725.00†	11.723	6.608	2681.52	6.78	440.59	51.04	0.00	
2825.00†	11.723	6.608	2779.43	7.09	460.78	53.38	0.00	
2925.00†	11.723	6.608	2877.35	7.40	480.96	55.72	0.00	
3025.00†	11.723	6.608	2975.26	7.71	501.14	58.05	0.00	
3125.00†	11.723	6.608	3073.18	8.02	521.33	60.39	0.00	
3225.00†	11.723	6.608	3171.09	8.33	541.51	62.73	0.00	
3325.00†	11.723	6.608	3269.00	8.64	561.69	65.07	0.00	
3425.00†	11.723	6.608	3366.92	8.95	581.88	67.41	0.00	
3525.00†	11.723	6.608	3464.83	9.26	602.06	69.74	0.00	
3625.00†	11.723	6.608	3562.75	9.57	622.24	72.08	0.00	
3725.00†	11.723	6.608	3660.66	9.88	642.43	74.42	0.00	
3825.00†	11.723	6.608	3758.57	10.20	662.61	76.76	0.00	
3925.00†	11.723	6.608	3856.49	10.51	682.79	79.10	0.00	
4025.00†	11.723	6.608	3954.40	10.82	702.98	81.44	0.00	
4125.00†	11.723	6.608	4052.32	11.13	723.16	83.77	0.00	
4225.00†	11.723	6.608	4150.23	11.44	743.34	86.11	0.00	
4325.00†	11.723	6.608	4248.14	11.75	763.53	88.45	0.00	
4425.00†	11.723	6.608	4346.06	12.06	783.71	90.79	0.00	
4525.00†	11.723	6.608	4443.97	12.37	803.89	93.13	0.00	
4625.00†	11.723	6.608	4541.89	12.68	824.08	95.46	0.00	
4725.00†	11.723	6.608	4639.80	12.99	844.26	97.80	0.00	
4825.00†	11.723	6.608	4737.71	13.30	864.44	100.14	0.00	
4925.00†	11.723	6.608	4835.63	13.61	884.63	102.48	0.00	
5025.00†	11.723	6.608	4933.54	13.92	904.81	104.82	0.00	
5125.00†	11.723	6.608	5031.46	14.23	924.99	107.15	0.00	
5225.00†	11.723	6.608	5129.37	14.54	945.18	109.49	0.00	
5325.00†	11.723	6.608	5227.28	14.85	965.36	111.83	0.00	
5425.00†	11.723	6.608	5325.20	15.16	985.54	114.17	0.00	
5525.00†	11.723	6.608	5423.11	15.47	1005.73	116.51	0.00	
5625.00†	11.723	6.608	5521.03	15.79	1025.91	118.84	0.00	



Planned Wellpath Report

TROUDT 2N-29B-L PWP (REV-A.0)

Page 4 of 8



REFERENCE WELLPATH IDENTIFICATION			
Operator	SRC ENERGY	Slot	SLOT#28 TROUDT 2N-29B-L (2122'FNL & 1689'FWL, SEC.27)
Area	COLORADO	Well	TROUDT 2N-29B-L
Field	WELD COUNTY (NAD83,TRUE NORTH)	Wellbore	TROUDT 2N-29B-L PWB
Facility	SEC.27-T06N-R66W		

WELLPATH DATA (179 stations) † = interpolated/extrapolated station								
MD [ft]	Inclination [°]	Azimuth [°]	TVD [ft]	Vert Sect [ft]	North [ft]	East [ft]	DLS [°/100ft]	Comments
5725.00†	11.723	6.608	5618.94	16.10	1046.09	121.18	0.00	
5825.00†	11.723	6.608	5716.85	16.41	1066.28	123.52	0.00	
5925.00†	11.723	6.608	5814.77	16.72	1086.46	125.86	0.00	
6025.00†	11.723	6.608	5912.68	17.03	1106.64	128.20	0.00	
6125.00†	11.723	6.608	6010.60	17.34	1126.83	130.54	0.00	
6225.00†	11.723	6.608	6108.51	17.65	1147.01	132.87	0.00	
6325.00†	11.723	6.608	6206.43	17.96	1167.19	135.21	0.00	
6425.00†	11.723	6.608	6304.34	18.27	1187.38	137.55	0.00	
6450.69	11.723	6.608	6329.49	18.35	1192.56	138.15	0.00	End of Tangent
6525.00†	12.965	335.463	6402.16	22.89	1207.66	135.55	9.00	
6625.00†	18.671	309.302	6498.46	42.48	1228.05	118.47	9.00	
6725.00†	26.244	296.375	6590.86	77.07	1248.05	86.21	9.00	
6825.00†	34.475	289.106	6677.10	125.81	1267.17	39.57	9.00	
6925.00†	42.985	284.400	6755.06	187.50	1284.95	-20.32	9.00	
7025.00†	51.635	281.004	6822.81	260.63	1300.95	-91.97	9.00	
7125.00†	60.361	278.340	6878.68	343.38	1314.76	-173.62	9.00	
7225.00†	69.132	276.106	6921.31	433.72	1326.06	-263.26	9.00	
7325.00†	77.928	274.119	6949.63	529.44	1334.56	-358.68	9.00	
7425.00†	86.738	272.261	6962.96	628.16	1340.05	-457.53	9.00	
7466.71	90.414	271.500	6964.00 ¹	669.65	1341.42	-499.19	9.00	End of 3D Arc
7525.00†	90.414	271.500	6963.58	727.62	1342.94	-557.46	0.00	
7625.00†	90.414	271.500	6962.86	827.08	1345.56	-657.43	0.00	
7725.00†	90.414	271.500	6962.13	926.53	1348.18	-757.39	0.00	
7825.00†	90.414	271.500	6961.41	1025.98	1350.80	-857.35	0.00	
7925.00†	90.414	271.500	6960.69	1125.43	1353.41	-957.32	0.00	
8016.71	90.414	271.500	6960.03	1216.64	1355.81	-1048.99	0.00	End of Tangent
8025.00†	90.414	271.334	6959.97	1224.89	1356.02	-1057.28	2.00	
8125.00†	90.414	269.334	6959.24	1324.10	1356.60	-1157.27	2.00	
8204.20	90.414	267.750	6958.67	1402.33	1354.59	-1236.44	2.00	End of 3D Arc
8225.00†	90.414	267.750	6958.52	1422.83	1353.77	-1257.22	0.00	



Planned Wellpath Report

TROUDT 2N-29B-L PWP (REV-A.0)

Page 5 of 8



REFERENCE WELLPATH IDENTIFICATION			
Operator	SRC ENERGY	Slot	SLOT#28 TROUDT 2N-29B-L (2122'FNL & 1689'FWL, SEC.27)
Area	COLORADO	Well	TROUDT 2N-29B-L
Field	WELD COUNTY (NAD83,TRUE NORTH)	Wellbore	TROUDT 2N-29B-L PWB
Facility	SEC.27-T06N-R66W		

WELLPATH DATA (179 stations) † = interpolated/extrapolated station								
MD [ft]	Inclination [°]	Azimuth [°]	TVD [ft]	Vert Sect [ft]	North [ft]	East [ft]	DLS [°/100ft]	Comments
8325.00†	90.414	267.750	6957.80	1521.39	1349.84	-1357.14	0.00	
8425.00†	90.414	267.750	6957.08	1619.95	1345.92	-1457.06	0.00	
8525.00†	90.414	267.750	6956.35	1718.51	1341.99	-1556.98	0.00	
8625.00†	90.414	267.750	6955.63	1817.06	1338.07	-1656.90	0.00	
8725.00†	90.414	267.750	6954.91	1915.62	1334.14	-1756.82	0.00	
8825.00†	90.414	267.750	6954.19	2014.18	1330.22	-1856.74	0.00	
8925.00†	90.414	267.750	6953.46	2112.74	1326.29	-1956.66	0.00	
9025.00†	90.414	267.750	6952.74	2211.30	1322.36	-2056.58	0.00	
9125.00†	90.414	267.750	6952.02	2309.85	1318.44	-2156.51	0.00	
9225.00†	90.414	267.750	6951.29	2408.41	1314.51	-2256.43	0.00	
9325.00†	90.414	267.750	6950.57	2506.97	1310.59	-2356.35	0.00	
9329.20	90.414	267.750	6950.54	2511.11	1310.42	-2360.54	0.00	End of Tangent
9425.00†	90.414	269.666	6949.85	2605.78	1308.26	-2456.31	2.00	
9466.70	90.414	270.500	6949.55	2647.13	1308.32	-2498.01	2.00	End of 3D Arc
9525.00†	90.414	270.500	6949.13	2705.00	1308.83	-2556.31	0.00	
9625.00†	90.414	270.500	6948.40	2804.25	1309.70	-2656.30	0.00	
9725.00†	90.414	270.500	6947.68	2903.51	1310.58	-2756.29	0.00	
9825.00†	90.414	270.500	6946.96	3002.76	1311.45	-2856.29	0.00	
9925.00†	90.414	270.500	6946.24	3102.02	1312.32	-2956.28	0.00	
10025.00†	90.414	270.500	6945.51	3201.28	1313.19	-3056.27	0.00	
10125.00†	90.414	270.500	6944.79	3300.53	1314.07	-3156.27	0.00	
10225.00†	90.414	270.500	6944.07	3399.79	1314.94	-3256.26	0.00	
10325.00†	90.414	270.500	6943.35	3499.04	1315.81	-3356.25	0.00	
10425.00†	90.414	270.500	6942.62	3598.30	1316.68	-3456.25	0.00	
10525.00†	90.414	270.500	6941.90	3697.55	1317.56	-3556.24	0.00	
10625.00†	90.414	270.500	6941.18	3796.81	1318.43	-3656.24	0.00	
10725.00†	90.414	270.500	6940.46	3896.06	1319.30	-3756.23	0.00	
10825.00†	90.414	270.500	6939.73	3995.32	1320.17	-3856.22	0.00	
10925.00†	90.414	270.500	6939.01	4094.57	1321.05	-3956.22	0.00	
11025.00†	90.414	270.500	6938.29	4193.83	1321.92	-4056.21	0.00	



Planned Wellpath Report

TROUDT 2N-29B-L PWP (REV-A.0)

Page 6 of 8



REFERENCE WELLPATH IDENTIFICATION			
Operator	SRC ENERGY	Slot	SLOT#28 TROUDT 2N-29B-L (2122'FNL & 1689'FWL, SEC.27)
Area	COLORADO	Well	TROUDT 2N-29B-L
Field	WELD COUNTY (NAD83,TRUE NORTH)	Wellbore	TROUDT 2N-29B-L PWB
Facility	SEC.27-T06N-R66W		

WELLPATH DATA (179 stations) † = interpolated/extrapolated station								
MD [ft]	Inclination [°]	Azimuth [°]	TVD [ft]	Vert Sect [ft]	North [ft]	East [ft]	DLS [°/100ft]	Comments
11125.00†	90.414	270.500	6937.57	4293.09	1322.79	-4156.20	0.00	
11225.00†	90.414	270.500	6936.84	4392.34	1323.66	-4256.20	0.00	
11325.00†	90.414	270.500	6936.12	4491.60	1324.54	-4356.19	0.00	
11425.00†	90.414	270.500	6935.40	4590.85	1325.41	-4456.18	0.00	
11525.00†	90.414	270.500	6934.68	4690.11	1326.28	-4556.18	0.00	
11625.00†	90.414	270.500	6933.95	4789.36	1327.16	-4656.17	0.00	
11725.00†	90.414	270.500	6933.23	4888.62	1328.03	-4756.16	0.00	
11825.00†	90.414	270.500	6932.51	4987.87	1328.90	-4856.16	0.00	
11925.00†	90.414	270.500	6931.79	5087.13	1329.77	-4956.15	0.00	
12025.00†	90.414	270.500	6931.06	5186.39	1330.65	-5056.15	0.00	
12125.00†	90.414	270.500	6930.34	5285.64	1331.52	-5156.14	0.00	
12225.00†	90.414	270.500	6929.62	5384.90	1332.39	-5256.13	0.00	
12325.00†	90.414	270.500	6928.90	5484.15	1333.26	-5356.13	0.00	
12425.00†	90.414	270.500	6928.17	5583.41	1334.14	-5456.12	0.00	
12525.00†	90.414	270.500	6927.45	5682.66	1335.01	-5556.11	0.00	
12625.00†	90.414	270.500	6926.73	5781.92	1335.88	-5656.11	0.00	
12725.00†	90.414	270.500	6926.01	5881.17	1336.75	-5756.10	0.00	
12825.00†	90.414	270.500	6925.28	5980.43	1337.63	-5856.09	0.00	
12925.00†	90.414	270.500	6924.56	6079.68	1338.50	-5956.09	0.00	
13025.00†	90.414	270.500	6923.84	6178.94	1339.37	-6056.08	0.00	
13125.00†	90.414	270.500	6923.11	6278.20	1340.24	-6156.07	0.00	
13216.70	90.414	270.500	6922.45	6369.21	1341.05	-6247.77	0.00	End of Tangent
13225.00†	90.414	270.334	6922.39	6377.45	1341.11	-6256.07	2.00	
13266.70	90.414	269.500	6922.09	6418.78	1341.05	-6297.76	2.00	End of 3D Arc
13325.00†	90.414	269.500	6921.67	6476.52	1340.54	-6356.06	0.00	
13366.70	90.414	269.500	6921.37	6517.81	1340.17	-6397.76	0.00	End of Tangent
13425.00†	90.414	268.334	6920.95	6575.46	1339.07	-6456.05	2.00	
13428.88	90.414	268.256	6920.92	6579.29	1338.95	-6459.93	2.00	End of 3D Arc
13525.00†	90.414	268.256	6920.22	6674.16	1336.03	-6556.00	0.00	
13625.00†	90.414	268.256	6919.50	6772.87	1332.99	-6655.95	0.00	



Planned Wellpath Report

TROUDT 2N-29B-L PWP (REV-A.0)

Page 7 of 8



REFERENCE WELLPATH IDENTIFICATION			
Operator	SRC ENERGY	Slot	SLOT#28 TROUDT 2N-29B-L (2122'FNL & 1689'FWL, SEC.27)
Area	COLORADO	Well	TROUDT 2N-29B-L
Field	WELD COUNTY (NAD83,TRUE NORTH)	Wellbore	TROUDT 2N-29B-L PWB
Facility	SEC.27-T06N-R66W		

WELLPATH DATA (179 stations) † = interpolated/extrapolated station

MD [ft]	Inclination [°]	Azimuth [°]	TVD [ft]	Vert Sect [ft]	North [ft]	East [ft]	DLS [%/100ft]	Comments
13725.00†	90.414	268.256	6918.78	6871.57	1329.94	-6755.90	0.00	
13825.00†	90.414	268.256	6918.06	6970.27	1326.90	-6855.85	0.00	
13925.00†	90.414	268.256	6917.33	7068.98	1323.86	-6955.80	0.00	
14025.00†	90.414	268.256	6916.61	7167.68	1320.82	-7055.75	0.00	
14125.00†	90.414	268.256	6915.89	7266.38	1317.77	-7155.71	0.00	
14225.00†	90.414	268.256	6915.16	7365.09	1314.73	-7255.66	0.00	
14325.00†	90.414	268.256	6914.44	7463.79	1311.69	-7355.61	0.00	
14425.00†	90.414	268.256	6913.72	7562.49	1308.64	-7455.56	0.00	
14525.00†	90.414	268.256	6913.00	7661.20	1305.60	-7555.51	0.00	
14625.00†	90.414	268.256	6912.27	7759.90	1302.56	-7655.46	0.00	
14725.00†	90.414	268.256	6911.55	7858.60	1299.52	-7755.41	0.00	
14825.00†	90.414	268.256	6910.83	7957.31	1296.47	-7855.36	0.00	
14925.00†	90.414	268.256	6910.10	8056.01	1293.43	-7955.31	0.00	
15025.00†	90.414	268.256	6909.38	8154.71	1290.39	-8055.26	0.00	
15125.00†	90.414	268.256	6908.66	8253.42	1287.34	-8155.22	0.00	
15225.00†	90.414	268.256	6907.93	8352.12	1284.30	-8255.17	0.00	
15325.00†	90.414	268.256	6907.21	8450.83	1281.26	-8355.12	0.00	
15425.00†	90.414	268.256	6906.49	8549.53	1278.22	-8455.07	0.00	
15525.00†	90.414	268.256	6905.77	8648.23	1275.17	-8555.02	0.00	
15625.00†	90.414	268.256	6905.04	8746.94	1272.13	-8654.97	0.00	
15725.00†	90.414	268.256	6904.32	8845.64	1269.09	-8754.92	0.00	
15825.00†	90.414	268.256	6903.60	8944.34	1266.04	-8854.87	0.00	
15925.00†	90.414	268.256	6902.87	9043.05	1263.00	-8954.82	0.00	
16025.00†	90.414	268.256	6902.15	9141.75	1259.96	-9054.78	0.00	
16125.00†	90.414	268.256	6901.43	9240.45	1256.92	-9154.73	0.00	
16225.00†	90.414	268.256	6900.71	9339.16	1253.87	-9254.68	0.00	
16325.00†	90.414	268.256	6899.98	9437.86	1250.83	-9354.63	0.00	
16425.00†	90.414	268.256	6899.26	9536.56	1247.79	-9454.58	0.00	
16460.95	90.414	268.256	6899.00 ²	9572.05	1246.69	-9490.51	0.00	End of Tangent

HOLE & CASING SECTIONS - Ref Wellbore: TROUDT 2N-29B-L PWB Ref Wellpath: TROUDT 2N-29B-L PWP (REV-A.0)									
String/Diameter	Start MD [ft]	End MD [ft]	Interval [ft]	Start TVD [ft]	End TVD [ft]	Start N/S [ft]	Start E/W [ft]	End N/S [ft]	End E/W [ft]
13.5in Open Hole	25.00	1750.00	1725.00	25.00	1726.86	0.00	0.00	243.80	28.24
9.625in Casing Surface	25.00	1750.00	1725.00	25.00	1726.86	0.00	0.00	243.80	28.24
8.5in Open Hole	1750.00	16460.95	14710.95	1726.86	6899.00	243.80	28.24	1246.69	-9490.51

TARGETS									
Name	MD [ft]	TVD [ft]	North [ft]	East [ft]	Grid East [US ft]	Grid North [US ft]	Latitude	Longitude	Shape
SEC.29-T06N-R66W EAST HALF		-6.00	1361.09	-92.38	3203773.74	1412932.71	40°27'52.531"N	104°46'03.497"W	polygon
SEC.28-T06N-R66W		-5.00	1361.09	-92.38	3203773.74	1412932.71	40°27'52.531"N	104°46'03.497"W	polygon
SEC.22-T06N-R66W		-4.00	2773.82	-8101.52	3195753.51	1414279.17	40°28'06.478"N	104°47'47.123"W	polygon
SEC.23-T06N-R66W		-4.00	5592.38	-1959.70	3201871.60	1417148.27	40°28'34.342"N	104°46'27.660"W	polygon
SEC.26-T06N-R66W		-4.00	-3401.95	582.80	3204488.23	1408175.60	40°27'05.465"N	104°45'54.763"W	polygon
SEC.27-T06N-R66W		-4.00	-3401.95	582.80	3204488.23	1408175.60	40°27'05.465"N	104°45'54.763"W	polygon
2) TROUDT 2N-29B-L BHL ON PLAT (743'FNL & 2511'FEL, SEC.29)	16460.95	6899.00	1246.69	-9490.51	3194377.24	1412740.68	40°27'51.383"N	104°48'05.087"W	circle
1) TROUDT 2N-29B-L TOP OF PROD ON PLAT (783'FNL & 1188'FWL, SEC.27)	7466.71	6964.00	1341.42	-499.19	3203367.13	1412909.68	40°27'52.337"N	104°46'08.760"W	circle



Planned Wellpath Report

TROUDT 2N-29B-L PWP (REV-A.0)
Page 8 of 8



REFERENCE WELLPATH IDENTIFICATION			
Operator	SRC ENERGY	Slot	SLOT#28 TROUDT 2N-29B-L (2122'FNL & 1689'FWL, SEC.27)
Area	COLORADO	Well	TROUDT 2N-29B-L
Field	WELD COUNTY (NAD83,TRUE NORTH)	Wellbore	TROUDT 2N-29B-L PWB
Facility	SEC.27-T06N-R66W		

SURVEY PROGRAM - Ref Wellbore: TROUDT 2N-29B-L PWB Ref Wellpath: TROUDT 2N-29B-L PWP (REV-A.0)				
Start MD [ft]	End MD [ft]	Positional Uncertainty Model	Log Name/Comment	Wellbore
25.00	1750.00	Custom BHI NaviTrak (Standard Rotating+Axial Corr) (Rockies 0.03Gt model)		TROUDT 2N-29B-L PWB
1750.00	16460.95	Custom BHI AutoTrak Curve (IFR1, Short) (Rockies 0.03Gt model)		TROUDT 2N-29B-L PWB