



SRC ENERGY

Operator: SRC Energy
Well Name: Sena 15-21
Legal: NENW, Section 15, Township 6N, Range 66W
Location: Weld County, CO
API: 05-123-25640

Deepest Water Well
Within 1 Mile = 605'





Wellbore History

Spud Date: 6/7/2008
Surf Csg: 8.625", 24# @ 725' - 370 sx
Prod Csg: 4.5", 11.6# @ 7408' - 1284 sx
TOC: 812' (CBL)
Perfs: NBRR: 6970'-7108'
CODL: 7268'-7284'

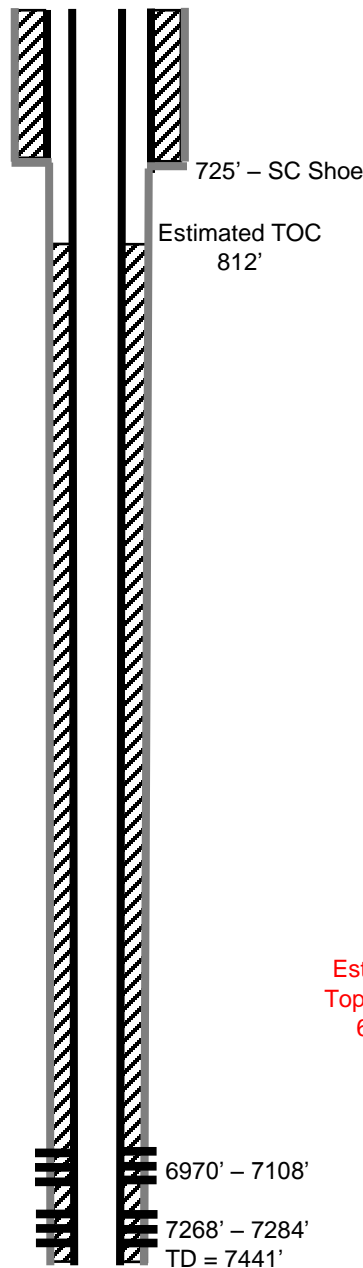
P&A Procedure

Set CIBP @ 6895'
Set 16 sx on top of CIBP (165' plug)
Pmp 48 sx @ 3000' (500' plug)
Perforate @ 775'
Set CICR @ 725'
Circ 211 sx through CICR
Pmp 69 sx @ 725' to surface

Key

-  Existing Cement Coverage
-  CICR
-  Cement Pumped
-  CIBP

Current



Proposed

