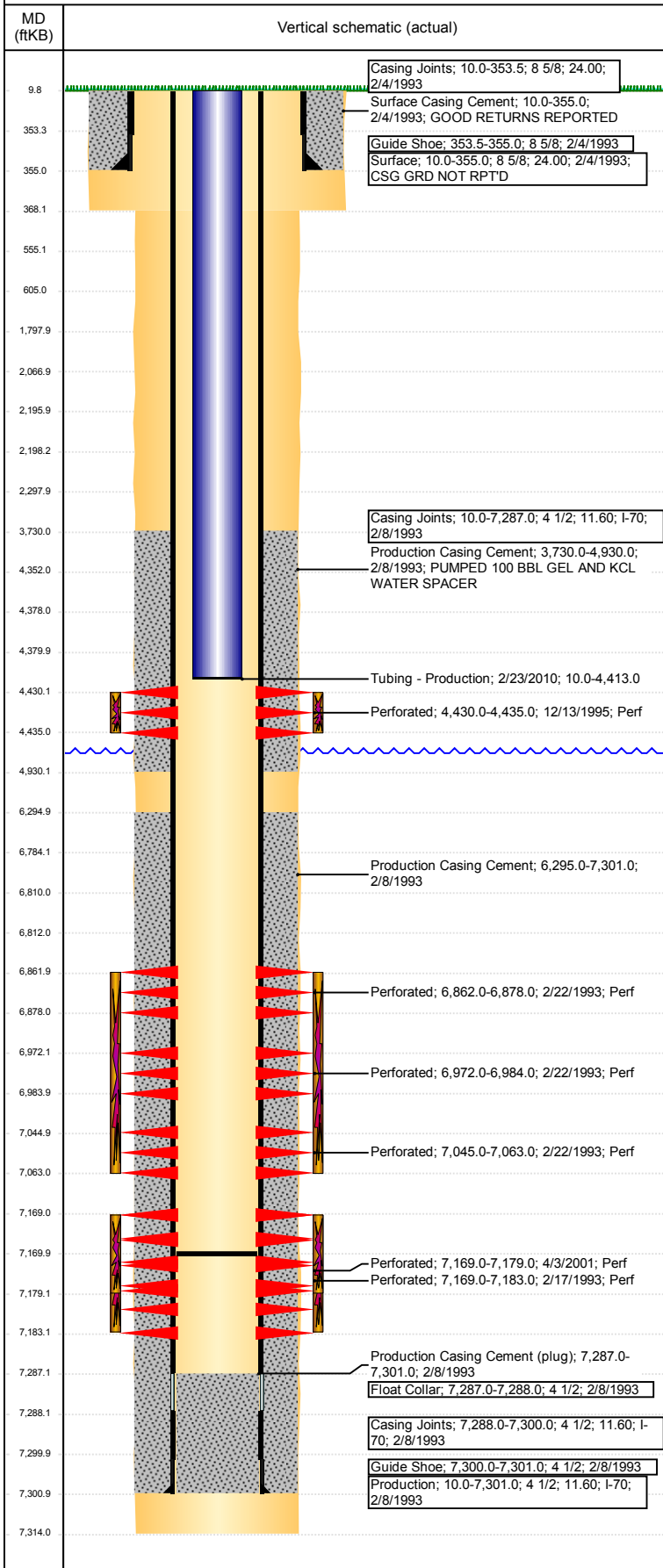


**Well Name: LYNCH 5-18**

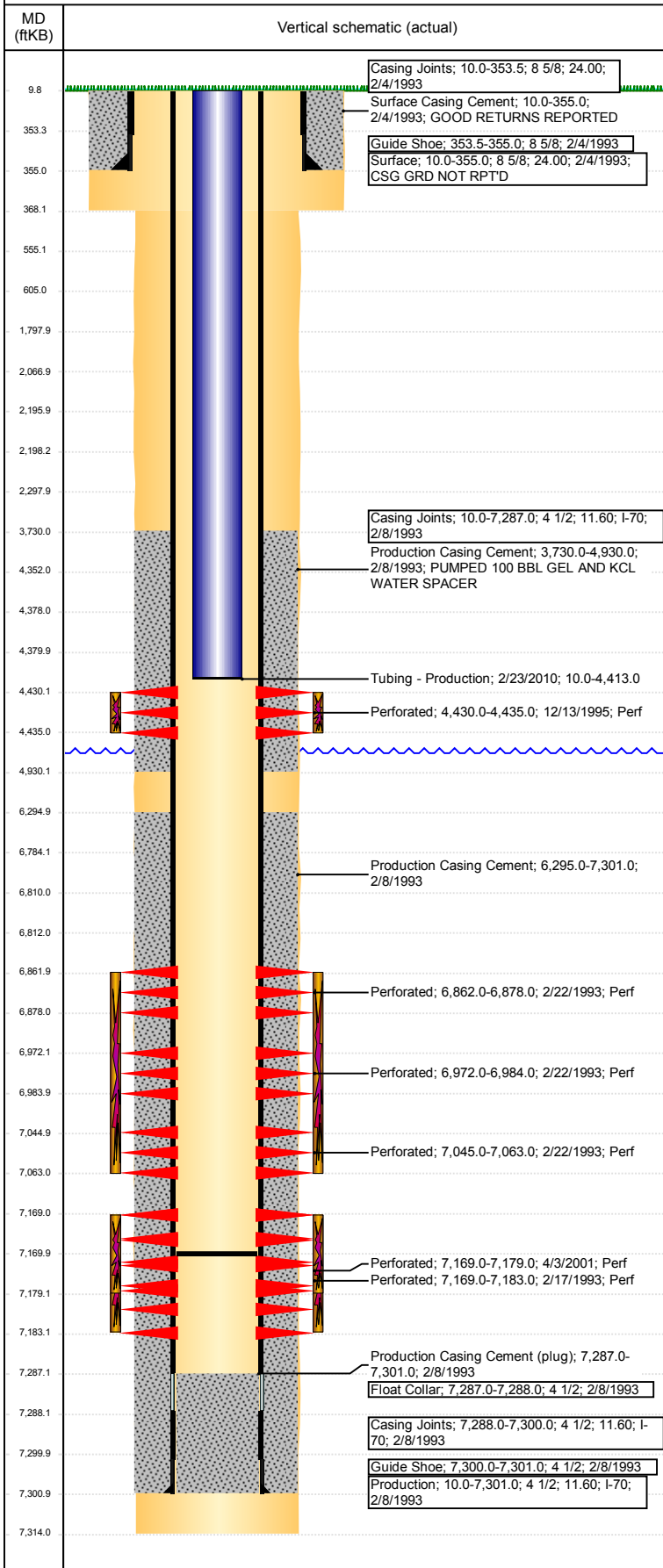
VERTICAL - ORIGINAL HOLE, 11/13/2017 9:27:05 AM



Well Header			
API 05-123-16698	Business Unit DJ BASIN	District 15	Well Config VERTICAL
Original KB Elevation (ft) 4,713	KB - GL / MSL (ftKB) 10.00	Spud Date 2/4/1993	P & A Date
Comment			
Directions To Well RD 37 & RD 46, S 1/4 MILE, SE 1/4 MILE INTO			
Congressional Location			
Quarter 3 SW	Quarter 4 NW	Section 18	Township 4
Township N	Twship N/S Dir N	Range 65	Range E/W Dir W
Bottom Hole Location			
North-South Distance (ft)	From N or S Line	East-West Distance (ft)	From E or W Line
Plug Back Total Depths			
Date	Depth (ftKB)	Method	Com
2/8/1993	7,287.0	CASING TALLY	TOP OF FLOAT COLLAR
2/17/1993	7,229.0	CASED HOLE LOG	DEPTH LOGGER ON CBL
2/25/1993	7,258.0	TAG	CLEAN OUT
1/31/1996	7,258.0	TAG	DRILL CIBP AND PUSH TO 7258'
2/22/2010	7,258.0	TAG	CLEAN OUT
2/23/2010	7,170.0	TAG	TAGGED FILL
Wellbore Sections			
Section Des	Size (in)	Act Top, MD (ftKB)	Act Btm, MD (ftKB)
SURFACE	12 1/4	10	368
PRODUCTION	7 7/8	368	7,314
Zone Statuses			
Zone Name	Status Date	Status	Fluid Type
SUSSEX	12/21/1995	PR	RECOMPLETI...
SUSSEX	2/3/1996	PR	COMMINGLE...
NIOBRARA	3/19/1993	PR	DRILLING/CO...
NIOBRARA	12/13/1995	SI	RECOMPLETI...
NIOBRARA	2/3/1996	PR	COMMINGLE...
CODELL	3/19/1993	PR	DRILLING/CO...
CODELL	12/13/1995	SI	RECOMPLETI...
CODELL	2/3/1996	PR	COMMINGLE...
CODELL	4/24/2001	PR	RE-FRAC, 4/3/...
Casing Strings			
Surface, 355.0ftKB			
Casing Description	Run Date	OD (in)	Wt/Len (l...)
Surface	2/4/1993	8 5/8	24.00
Grade	Top, MD (ft...)	MD (ftKB)	
	10.0	355.0	
Production, 7,301.0ftKB			
Casing Description	Run Date	OD (in)	Wt/Len (l...)
Production	2/8/1993	4 1/2	11.60
Grade	Top, MD (ft...)	MD (ftKB)	
	10.0	7,301.0	
Cement			
Description	Top Depth (ftKB)	Bottom Depth (ftKB)	
Surface Casing Cement	10.0	355.0	
Production Casing Cement	3,730.0	4,930.0	
Production Casing Cement	6,295.0	7,301.0	
DUMP BAIL	4,352.0	4,378.0	
DUMP BAIL	6,784.0	6,810.0	
SHOE PLUG	555.0	605.0	
SHOE PLUG	9.8	555.0	
CEMENT PLUG	2,198.0	2,298.0	
CEMENT PLUG	2,067.0	2,196.0	
CEMENT PLUG	1,798.0	2,298.0	
Tubing Strings			
Tubing Description	Run Date	String...	ID (in)
PRODUCTION	1/31/1996	2 3/8	
Wt (lb/ft)	Grade	Len (ft)	Set De...
		7,105.00	

Well Name: LYNCH 5-18

VERTICAL - ORIGINAL HOLE, 11/13/2017 9:27:05 AM



Tubing Components							
Item Des	OD (in)	Wt (lb/ft)	Grade	Jts	Len (ft)	Btm (ftKB)	Btm (TVD) (ftKB)
TUBING, ,	2 3/8			217	7,103.00	7,113.0	
SEATING NIPPLE,	2			1	1.00	7,114.0	
NOTCHED COLLAR, ,	2 3/8			1	1.00	7,115.0	
Tubing Description	Run Date	String ...	ID (in)	Wt (lb/ft)	Grade	Len (ft)	Set De...
Tubing - Production	2/23/2010	2 3/8	2.00	4.70	J-55	4,403.01	

Tubing Components							
Item Des	OD (in)	Wt (lb/ft)	Grade	Jts	Len (ft)	Btm (ftKB)	Btm (TVD) (ftKB)
EUE 8rd Tubing	2 3/8	4.70	J-55	138	4,401.01	4,411.0	
Seal Nipple	2 3/8			1	1.00	4,412.0	
Notched collar	2 3/8			1	1.00	4,413.0	

Other In Hole					
Run Date	Des	OD (in)	Top (ftKB)	Btm (ftKB)	
11/3/2017	Cast Iron Bridge Plug	4	6,810.0	6,812.0	
11/3/2017	Cast Iron Bridge Plug	4	4,378.0	4,380.0	
11/3/2017	CICR	4	2,196.0	2,198.0	

Logs			
Date	Type	Top, MD (ftKB)	Btm, MD (ftKB)
2/8/1993	COMPENSATED DENSITY	4,300.0	7,312.0
2/8/1993	INDUCTION	355.0	7,312.0
2/17/1993	CEMENT BOND	3,650.0	7,223.0

Perforation Data					
Linked Zone	Bnch/St g	Sum of Entered Shot Total	Top (ftKB)	Btm (ftKB)	Date
SUSSEX, ORIGINAL HOLE		0	2,298.00	2,298.00	11/9/2017
NIOBRARA, ORIGINAL HOLE	A	18	4,430.00	4,435.00	12/13/1995
NIOBRARA, ORIGINAL HOLE	B	8	6,862.00	6,878.00	2/22/1993
NIOBRARA, ORIGINAL HOLE	C	5	6,972.00	6,984.00	2/22/1993
NIOBRARA, ORIGINAL HOLE		2	7,045.00	7,063.00	2/22/1993
CODELL, ORIGINAL HOLE		25	7,169.00	7,183.00	2/17/1993
CODELL, ORIGINAL HOLE		20	7,169.00	7,179.00	4/3/2001

Total (Sum)	78		
-------------	----	--	--

Stimulation Intervals		
Start Date	Primary Job Type	
2/19/1993	DRILLING/COMPLETION - ORIGINAL	
Technical Result	Tech Result Details	Tech Result Note

Comment		
FRAC'D TRIPLE ENTRY		
Start Date	Primary Job Type	
12/15/1995	RECOMPLETION	
Technical Result	Tech Result Details	Tech Result Note

Comment		
FRAC'D TRIPLE ENTRY		
Start Date	Primary Job Type	
4/9/2001	RE-FRAC	
Technical Result	Tech Result Details	Tech Result Note

Comment		
Start Date	Primary Job Type	
2/24/1993	DRILLING/COMPLETION - ORIGINAL	
Technical Result	Tech Result Details	Tech Result Note

Comment		
FRAC'D TRIPLE ENTRY		