

SRC ENERGY

Location: COLORADO Slot: SLOT#10 TROUDT 8N-23B-M (760'FNL & 1730'FWL, SEC.27)
 Field: WELD COUNTY (NAD83, TRUE NORTH) Well: TROUDT 8N-23B-M
 Facility: SEC.27-T06N-R66W Wellbore: TROUDT 8N-23B-M PWB

Red reference wellpath is TROUDT 8N-23B-M PWB (REV-A-0)
 Grid System: NAD83 / Lambert Colorado SP, Northern Zone (501), US feet
 True vertical depths are referenced to PD 562 (25) (RKB) * = Wellpath was transformed from a different geodetic datum
 Measured depths are referenced to PD 562 (25) (RKB) North Reference: True north
 PD 562 (25) (RKB) to Mean Sea Level: 4744 feet Scale: True distance
 Mean Sea Level to Mud line (At Slot: SLOT#10 TROUDT 8N-23B-M (760'FNL & 1730'FWL, SEC.27)): 0 feet Depths are in feet
 Coordinates are in feet referenced to Slot Created by: doddanna on 2017-09-18
 Database: WellArchitectIDB

Location Information

Facility Name	Grid East (US ft)	Grid North (US ft)	Latitude	Longitude		
SEC.27-T06N-R66W	320373.744	1412932.710	40°27'52.531"N	104°46'03.497"W		
Slot	Local N (ft)	Local E (ft)	Grid East (US ft)	Grid North (US ft)	Latitude	Longitude
SLOT#10 TROUDT 8N-23B-M (760'FNL & 1730'FWL, SEC.27)	0.00	134.95	3203908.689	1412933.625	40°27'52.531"N	104°46'01.751"W
PD 562 (25) (RKB) to Mud line (At Slot: SLOT#10 TROUDT 8N-23B-M (760'FNL & 1730'FWL, SEC.27))						4744ft
Mean Sea Level to Mud line (At Slot: SLOT#10 TROUDT 8N-23B-M (760'FNL & 1730'FWL, SEC.27))						0ft
PD 562 (25) (RKB) to Mean Sea Level						4744ft

Survey Program

Start MD (ft)	End MD (ft)	Tool	Model	Log Name/Comment	Wellbore
25.00	1750.00	BHI NavTrak	Custom BHI NavTrak (Standard Rotating-Axial Cor) (Rockies 0.03Gt model)		TROUDT 8N-23B-M PWB
1750.00	14845.98	BHI AutoTrak Curve	Custom BHI AutoTrak Curve (IFR1, Short) (Rockies 0.03Gt model)		TROUDT 8N-23B-M PWB

Targets

Name	MD (ft)	TVD (ft)	Local N (ft)	Local E (ft)	Grid East (US ft)	Grid North (US ft)	Latitude	Longitude
SEC.28-T06N-R66W		0.00	0.00	-134.95	3203773.74	1412932.71	40°27'52.531"N	104°46'03.497"W
SEC.22-T06N-R66W		1.00	1412.75	-8144.09	3195753.51	1414279.17	40°28'06.478"N	104°47'47.123"W
SEC.23-T06N-R66W		1.00	4231.30	-2002.26	3201871.60	1417148.27	40°28'34.342"N	104°46'27.660"W
SEC.26-T06N-R66W		1.00	-4763.04	540.21	3204488.23	1408175.60	40°27'05.465"N	104°45'54.763"W
SEC.27-T06N-R66W		1.00	-4763.04	540.21	3204488.23	1408175.60	40°27'05.465"N	104°45'54.763"W
TROUDT 8N-23B-M BHL ON PLAT (556'FSL & 510'FEL, SEC.23)	14845.98	6943.00	1283.84	8450.46	3212347.89	1414287.41	40°28'05.203"N	104°44'12.415"W
TROUDT 8N-23B-M TOP OF PROD ON PLAT (548'FSL & 2527'FEL, SEC.22)	7498.33	6984.00	1301.00	1102.95	3205000.80	1414243.84	40°28'05.387"N	104°45'47.480"W

Hole and Casing Sections

Name	Start MD (ft)	End MD (ft)	Interval (ft)	Start TVD (ft)	End TVD (ft)	Start Local N (ft)	Start Local E (ft)	End Local N (ft)	End Local E (ft)	Wellbore
13.5in Open Hole	25.00	1750.00	1725.00	25.00	1725.89	0.00	0.00	227.79	89.35	TROUDT 8N-23B-M PWB
9.625in Casing Surface	25.00	1750.00	1725.00	25.00	1725.89	0.00	0.00	227.79	89.35	TROUDT 8N-23B-M PWB
8.5in Open Hole	1750.00	14845.98	13095.98	1725.89	6943.00	227.79	89.35	1283.84	8450.46	TROUDT 8N-23B-M PWB

Well Profile Data

Design Comment	MD (ft)	Inc (°)	Az (°)	TVD (ft)	Local N (ft)	Local E (ft)	DLS (°/100ft)	VS (ft)
Tie On	25.00	0.000	21.417	25.00	0.00	0.00	0.00	0.00
End of Tangent	300.00	0.000	21.417	300.00	0.00	0.00	0.00	0.00
End of Build	918.70	12.374	21.417	913.90	61.95	24.30	2.00	33.33
End of Tangent	6544.42	12.374	21.417	6408.94	1184.26	464.50	0.00	637.11
End of 3D Arc	7498.33	90.320	90.134	6984.00	1301.00	1102.95	9.00	1285.85
End of Tangent	14845.98	90.320	90.134	6943.00	1283.84	8450.46	0.00	8547.43

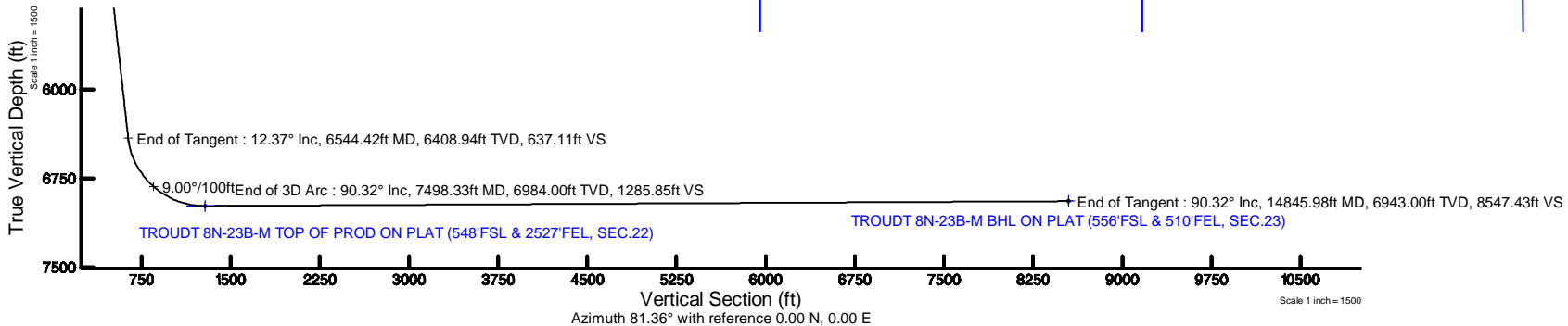
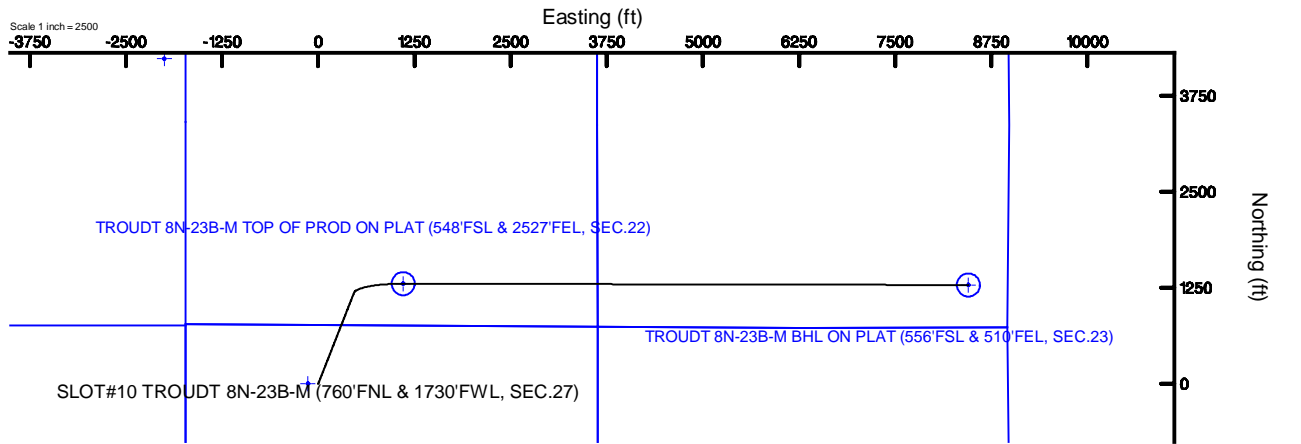


SRC ENERGY



BGGM (1900.0 to 2019.0) Dip: 66.90° Field: 52426.1 nT
 Magnetic North is 8.37 degrees East of True North (at 8/31/2017)

To correct azimuth from Magnetic to True add 8.37 degrees



TROUDT_8N-23B-M_PWP__REV-A.0_.las

~VERSION INFORMATION

VERS. 2.0 : CWLS LOG ASCII STANDARD-VERSION 2.0
 WRAP. NO : ASCII DATA SECTION CONTAINS ONE ROW PER WELLPATH STATION

~WELL INFORMATION

#MNEM	.UNITS	DATA	:DESCRIPTION
#----	.-----	----	:-----
STRT	.ft	0.00	:START MD
STOP	.ft	14845.98	:STOP MD
STEP	.ft	0.0	:STEP (non-uniform increment)
NULL	.	-999.99	:NULL
COMP	.	SRC ENERGY	:OPERATOR
WELL	.	TROUDT 8N-23B-M	:WELL
FLD	.	WELD COUNTY (NAD83,TRUE NORTH)	:FIELD
LOC	.	COLORADO	:AREA (aka: Location)
CNTY	.	N/A	:COUNTY
STAT	.	N/A	:STATE
CTRY	.	N/A	:COUNTRY
SRVC	.	Baker Hughes	:CONTRACTOR
DATE	.	09/05/2017	:LOG REV DATE
API	.		:API NUMBER

~OTHER INFORMATION

#Software: WellArchitect(R) Version 5.0

#MNEM	.UNITS	DATA	:DESCRIPTION
#----	.-----	----	:-----
WPTYPE	.	PLANNED WELLPATH	:WELLPATH TYPE
FACILITY	.	SEC.27-T06N-R66W	:FACILITY
SLOT	.	SLOT#10 TROUDT 8N-23B-M (760'FNL & 1730'FWL, SEC.27):SLOT	:SLOT
WELLBORE	.	TROUDT 8N-23B-M PWB	:WELLBORE
WELLPATH	.	TROUDT 8N-23B-M PWP (REV-A.0)	:WELLPATH
MDREFPT	.	PD 562 (25') (RKB)	:MD REFERENCE POINT
TVDREFPT	.	PD 562 (25') (RKB)	:TVD REFERENCE POINT
LCLREFPT	.	Slot	:LOCAL COORDINATE REFERENCE PT

TROUDT_8N-23B-M_PWP__REV-A.0_.las

VSAZIMUTH.deg 81.36 :VERTICAL SECTION AZIMUTH
 VSORIGN .ft 0.00 :VERTICAL SECTION ORIGIN NORTH
 VSORIGE .ft 0.00 :VERTICAL SECTION ORIGIN EAST

~CURVE (WELLPATH) INFORMATION

#MNEM .UNITS :DESCRIPTION
 #----- .----- :-----
 DEPT .ft :MEASURED DEPTH
 INC .deg :INCLINATION
 AZI .deg :AZIMUTH
 TVD .ft :TRUE VERTICAL DEPTH
 SECT .ft :CROSS SECTION (CURTAIN/VERTICAL)
 LOCALN .ft :LOCAL NORTH
 LOCALE .ft :LOCAL EAST
 LAT .deg :LATITUDE
 LONG .deg :LONGITUDE
 DLS .deg/100ft :DOGLEG SEVERITY

~ASCII DATA

0.00	0.00	21.42	0.00	0.00	0.00	0.00	40.4645920	-104.7671530	0.00
25.00	0.00	21.42	25.00	0.00	0.00	0.00	40.4645920	-104.7671530	0.00
125.00	0.00	21.42	125.00	0.00	0.00	0.00	40.4645920	-104.7671530	0.00
225.00	0.00	21.42	225.00	0.00	0.00	0.00	40.4645920	-104.7671530	0.00
300.00	0.00	21.42	300.00	0.00	0.00	0.00	40.4645920	-104.7671530	0.00
325.00	0.50	21.42	325.00	0.05	0.10	0.04	40.4645923	-104.7671529	2.00
425.00	2.50	21.42	424.96	1.37	2.54	1.00	40.4645990	-104.7671494	2.00
525.00	4.50	21.42	524.77	4.42	8.22	3.22	40.4646146	-104.7671414	2.00
625.00	6.50	21.42	624.30	9.22	17.14	6.72	40.4646391	-104.7671288	2.00
725.00	8.50	21.42	723.44	15.76	29.29	11.49	40.4646724	-104.7671117	2.00
825.00	10.50	21.42	822.07	24.03	44.66	17.52	40.4647146	-104.7670900	2.00
918.70	12.37	21.42	913.90	33.33	61.95	24.30	40.4647621	-104.7670657	2.00
925.00	12.37	21.42	920.06	34.01	63.21	24.79	40.4647655	-104.7670639	0.00
1025.00	12.37	21.42	1017.73	44.74	83.16	32.62	40.4648203	-104.7670358	0.00
1125.00	12.37	21.42	1115.41	55.47	103.11	40.44	40.4648750	-104.7670077	0.00

TROUDT_8N-23B-M_PWP__REV-A.0_.las

1225.00	12.37	21.42	1213.09	66.20	123.06	48.27	40.4649298	-104.7669795	0.00
1325.00	12.37	21.42	1310.76	76.94	143.01	56.09	40.4649845	-104.7669514	0.00
1425.00	12.37	21.42	1408.44	87.67	162.96	63.92	40.4650393	-104.7669233	0.00
1525.00	12.37	21.42	1506.12	98.40	182.91	71.74	40.4650941	-104.7668952	0.00
1625.00	12.37	21.42	1603.79	109.13	202.86	79.57	40.4651488	-104.7668670	0.00
1725.00	12.37	21.42	1701.47	119.87	222.81	87.39	40.4652036	-104.7668389	0.00
1825.00	12.37	21.42	1799.15	130.60	242.76	95.22	40.4652583	-104.7668108	0.00
1925.00	12.37	21.42	1896.83	141.33	262.71	103.04	40.4653131	-104.7667827	0.00
2025.00	12.37	21.42	1994.50	152.06	282.66	110.87	40.4653679	-104.7667546	0.00
2125.00	12.37	21.42	2092.18	162.80	302.61	118.69	40.4654226	-104.7667264	0.00
2225.00	12.37	21.42	2189.86	173.53	322.55	126.52	40.4654774	-104.7666983	0.00
2325.00	12.37	21.42	2287.53	184.26	342.50	134.34	40.4655321	-104.7666702	0.00
2425.00	12.37	21.42	2385.21	194.99	362.45	142.17	40.4655869	-104.7666421	0.00
2525.00	12.37	21.42	2482.89	205.73	382.40	149.99	40.4656416	-104.7666140	0.00
2625.00	12.37	21.42	2580.56	216.46	402.35	157.82	40.4656964	-104.7665858	0.00
2725.00	12.37	21.42	2678.24	227.19	422.30	165.64	40.4657512	-104.7665577	0.00
2825.00	12.37	21.42	2775.92	237.92	442.25	173.46	40.4658059	-104.7665296	0.00
2925.00	12.37	21.42	2873.59	248.66	462.20	181.29	40.4658607	-104.7665015	0.00
3025.00	12.37	21.42	2971.27	259.39	482.15	189.11	40.4659154	-104.7664733	0.00
3125.00	12.37	21.42	3068.95	270.12	502.10	196.94	40.4659702	-104.7664452	0.00
3225.00	12.37	21.42	3166.63	280.85	522.05	204.76	40.4660250	-104.7664171	0.00
3325.00	12.37	21.42	3264.30	291.59	542.00	212.59	40.4660797	-104.7663890	0.00
3425.00	12.37	21.42	3361.98	302.32	561.95	220.41	40.4661345	-104.7663609	0.00
3525.00	12.37	21.42	3459.66	313.05	581.90	228.24	40.4661892	-104.7663327	0.00
3625.00	12.37	21.42	3557.33	323.78	601.85	236.06	40.4662440	-104.7663046	0.00
3725.00	12.37	21.42	3655.01	334.52	621.80	243.89	40.4662987	-104.7662765	0.00
3825.00	12.37	21.42	3752.69	345.25	641.75	251.71	40.4663535	-104.7662484	0.00
3925.00	12.37	21.42	3850.36	355.98	661.70	259.54	40.4664083	-104.7662202	0.00
4025.00	12.37	21.42	3948.04	366.71	681.64	267.36	40.4664630	-104.7661921	0.00
4125.00	12.37	21.42	4045.72	377.45	701.59	275.19	40.4665178	-104.7661640	0.00
4225.00	12.37	21.42	4143.40	388.18	721.54	283.01	40.4665725	-104.7661359	0.00
4325.00	12.37	21.42	4241.07	398.91	741.49	290.84	40.4666273	-104.7661078	0.00
4425.00	12.37	21.42	4338.75	409.64	761.44	298.66	40.4666821	-104.7660796	0.00
4525.00	12.37	21.42	4436.43	420.38	781.39	306.49	40.4667368	-104.7660515	0.00

TROUDT_8N-23B-M_PWP__REV-A.0_.las

4625.00	12.37	21.42	4534.10	431.11	801.34	314.31	40.4667916	-104.7660234	0.00
4725.00	12.37	21.42	4631.78	441.84	821.29	322.14	40.4668463	-104.7659953	0.00
4825.00	12.37	21.42	4729.46	452.57	841.24	329.96	40.4669011	-104.7659671	0.00
4925.00	12.37	21.42	4827.13	463.31	861.19	337.79	40.4669558	-104.7659390	0.00
5025.00	12.37	21.42	4924.81	474.04	881.14	345.61	40.4670106	-104.7659109	0.00
5125.00	12.37	21.42	5022.49	484.77	901.09	353.43	40.4670654	-104.7658828	0.00
5225.00	12.37	21.42	5120.17	495.50	921.04	361.26	40.4671201	-104.7658546	0.00
5325.00	12.37	21.42	5217.84	506.24	940.99	369.08	40.4671749	-104.7658265	0.00
5425.00	12.37	21.42	5315.52	516.97	960.94	376.91	40.4672296	-104.7657984	0.00
5525.00	12.37	21.42	5413.20	527.70	980.89	384.73	40.4672844	-104.7657703	0.00
5625.00	12.37	21.42	5510.87	538.43	1000.84	392.56	40.4673392	-104.7657422	0.00
5725.00	12.37	21.42	5608.55	549.17	1020.79	400.38	40.4673939	-104.7657140	0.00
5825.00	12.37	21.42	5706.23	559.90	1040.74	408.21	40.4674487	-104.7656859	0.00
5925.00	12.37	21.42	5803.90	570.63	1060.68	416.03	40.4675034	-104.7656578	0.00
6025.00	12.37	21.42	5901.58	581.36	1080.63	423.86	40.4675582	-104.7656297	0.00
6125.00	12.37	21.42	5999.26	592.10	1100.58	431.68	40.4676129	-104.7656015	0.00
6225.00	12.37	21.42	6096.94	602.83	1120.53	439.51	40.4676677	-104.7655734	0.00
6325.00	12.37	21.42	6194.61	613.56	1140.48	447.33	40.4677225	-104.7655453	0.00
6425.00	12.37	21.42	6292.29	624.29	1160.43	455.16	40.4677772	-104.7655172	0.00
6525.00	12.37	21.42	6389.97	635.03	1180.38	462.98	40.4678320	-104.7654890	0.00
6544.42	12.37	21.42	6408.94	637.11	1184.26	464.50	40.4678426	-104.7654836	0.00
6625.00	16.40	46.10	6487.04	650.74	1200.20	475.87	40.4678864	-104.7654427	9.00
6725.00	23.60	62.19	6581.02	681.24	1219.37	503.80	40.4679390	-104.7653423	9.00
6825.00	31.70	70.75	6669.56	726.06	1237.41	546.40	40.4679885	-104.7651892	9.00
6925.00	40.15	76.05	6750.49	784.11	1253.88	602.61	40.4680337	-104.7649872	9.00
7025.00	48.77	79.75	6821.80	853.94	1268.37	671.05	40.4680735	-104.7647413	9.00
7125.00	57.48	82.58	6881.76	933.85	1280.53	750.02	40.4681068	-104.7644574	9.00
7225.00	66.25	84.91	6928.87	1021.86	1290.05	837.60	40.4681330	-104.7641427	9.00
7325.00	75.04	86.94	6961.98	1115.81	1296.70	931.61	40.4681512	-104.7638048	9.00
7425.00	83.85	88.81	6980.27	1213.38	1300.32	1029.75	40.4681612	-104.7634521	9.00
7498.33	90.32	90.13	6984.00	1285.85	1301.00	1102.95	40.4681630	-104.7631890	9.00
7525.00	90.32	90.13	6983.85	1312.20	1300.94	1129.61	40.4681628	-104.7630932	0.00
7625.00	90.32	90.13	6983.29	1411.03	1300.70	1229.61	40.4681622	-104.7627338	0.00
7725.00	90.32	90.13	6982.74	1509.86	1300.47	1329.61	40.4681615	-104.7623744	0.00

TROUDT_8N-23B-M_PWP__REV-A.0_.las

7825.00	90.32	90.13	6982.18	1608.69	1300.24	1429.61	40.4681609	-104.7620150	0.00
7925.00	90.32	90.13	6981.62	1707.52	1300.00	1529.61	40.4681602	-104.7616556	0.00
8025.00	90.32	90.13	6981.06	1806.34	1299.77	1629.60	40.4681595	-104.7612962	0.00
8125.00	90.32	90.13	6980.50	1905.17	1299.53	1729.60	40.4681589	-104.7609368	0.00
8225.00	90.32	90.13	6979.95	2004.00	1299.30	1829.60	40.4681582	-104.7605774	0.00
8325.00	90.32	90.13	6979.39	2102.83	1299.07	1929.60	40.4681576	-104.7602180	0.00
8425.00	90.32	90.13	6978.83	2201.66	1298.83	2029.60	40.4681569	-104.7598586	0.00
8525.00	90.32	90.13	6978.27	2300.49	1298.60	2129.59	40.4681562	-104.7594992	0.00
8625.00	90.32	90.13	6977.71	2399.32	1298.37	2229.59	40.4681556	-104.7591398	0.00
8725.00	90.32	90.13	6977.16	2498.15	1298.13	2329.59	40.4681549	-104.7587804	0.00
8825.00	90.32	90.13	6976.60	2596.97	1297.90	2429.59	40.4681542	-104.7584210	0.00
8925.00	90.32	90.13	6976.04	2695.80	1297.67	2529.59	40.4681536	-104.7580616	0.00
9025.00	90.32	90.13	6975.48	2794.63	1297.43	2629.59	40.4681529	-104.7577023	0.00
9125.00	90.32	90.13	6974.92	2893.46	1297.20	2729.58	40.4681522	-104.7573429	0.00
9225.00	90.32	90.13	6974.37	2992.29	1296.97	2829.58	40.4681516	-104.7569835	0.00
9325.00	90.32	90.13	6973.81	3091.12	1296.73	2929.58	40.4681509	-104.7566241	0.00
9425.00	90.32	90.13	6973.25	3189.95	1296.50	3029.58	40.4681502	-104.7562647	0.00
9525.00	90.32	90.13	6972.69	3288.77	1296.27	3129.58	40.4681495	-104.7559053	0.00
9625.00	90.32	90.13	6972.13	3387.60	1296.03	3229.57	40.4681489	-104.7555459	0.00
9725.00	90.32	90.13	6971.58	3486.43	1295.80	3329.57	40.4681482	-104.7551865	0.00
9825.00	90.32	90.13	6971.02	3585.26	1295.57	3429.57	40.4681475	-104.7548271	0.00
9925.00	90.32	90.13	6970.46	3684.09	1295.33	3529.57	40.4681468	-104.7544677	0.00
10025.00	90.32	90.13	6969.90	3782.92	1295.10	3629.57	40.4681461	-104.7541083	0.00
10125.00	90.32	90.13	6969.34	3881.75	1294.86	3729.57	40.4681455	-104.7537489	0.00
10225.00	90.32	90.13	6968.79	3980.57	1294.63	3829.56	40.4681448	-104.7533895	0.00
10325.00	90.32	90.13	6968.23	4079.40	1294.40	3929.56	40.4681441	-104.7530301	0.00
10425.00	90.32	90.13	6967.67	4178.23	1294.16	4029.56	40.4681434	-104.7526707	0.00
10525.00	90.32	90.13	6967.11	4277.06	1293.93	4129.56	40.4681427	-104.7523113	0.00
10625.00	90.32	90.13	6966.55	4375.89	1293.70	4229.56	40.4681420	-104.7519519	0.00
10725.00	90.32	90.13	6966.00	4474.72	1293.46	4329.55	40.4681413	-104.7515926	0.00
10825.00	90.32	90.13	6965.44	4573.55	1293.23	4429.55	40.4681407	-104.7512332	0.00
10925.00	90.32	90.13	6964.88	4672.38	1293.00	4529.55	40.4681400	-104.7508738	0.00
11025.00	90.32	90.13	6964.32	4771.20	1292.76	4629.55	40.4681393	-104.7505144	0.00
11125.00	90.32	90.13	6963.76	4870.03	1292.53	4729.55	40.4681386	-104.7501550	0.00

TROUDT_8N-23B-M_PWP__REV-A.0_.las

11225.00	90.32	90.13	6963.21	4968.86	1292.30	4829.55	40.4681379	-104.7497956	0.00
11325.00	90.32	90.13	6962.65	5067.69	1292.06	4929.54	40.4681372	-104.7494362	0.00
11425.00	90.32	90.13	6962.09	5166.52	1291.83	5029.54	40.4681365	-104.7490768	0.00
11525.00	90.32	90.13	6961.53	5265.35	1291.60	5129.54	40.4681358	-104.7487174	0.00
11625.00	90.32	90.13	6960.97	5364.18	1291.36	5229.54	40.4681351	-104.7483580	0.00
11725.00	90.32	90.13	6960.42	5463.00	1291.13	5329.54	40.4681344	-104.7479986	0.00
11825.00	90.32	90.13	6959.86	5561.83	1290.90	5429.53	40.4681337	-104.7476392	0.00
11925.00	90.32	90.13	6959.30	5660.66	1290.66	5529.53	40.4681330	-104.7472798	0.00
12025.00	90.32	90.13	6958.74	5759.49	1290.43	5629.53	40.4681323	-104.7469204	0.00
12125.00	90.32	90.13	6958.18	5858.32	1290.19	5729.53	40.4681316	-104.7465610	0.00
12225.00	90.32	90.13	6957.63	5957.15	1289.96	5829.53	40.4681309	-104.7462016	0.00
12325.00	90.32	90.13	6957.07	6055.98	1289.73	5929.53	40.4681302	-104.7458423	0.00
12425.00	90.32	90.13	6956.51	6154.81	1289.49	6029.52	40.4681295	-104.7454829	0.00
12525.00	90.32	90.13	6955.95	6253.63	1289.26	6129.52	40.4681288	-104.7451235	0.00
12625.00	90.32	90.13	6955.39	6352.46	1289.03	6229.52	40.4681280	-104.7447641	0.00
12725.00	90.32	90.13	6954.84	6451.29	1288.79	6329.52	40.4681273	-104.7444047	0.00
12825.00	90.32	90.13	6954.28	6550.12	1288.56	6429.52	40.4681266	-104.7440453	0.00
12925.00	90.32	90.13	6953.72	6648.95	1288.33	6529.51	40.4681259	-104.7436859	0.00
13025.00	90.32	90.13	6953.16	6747.78	1288.09	6629.51	40.4681252	-104.7433265	0.00
13125.00	90.32	90.13	6952.60	6846.61	1287.86	6729.51	40.4681245	-104.7429671	0.00
13225.00	90.32	90.13	6952.05	6945.43	1287.63	6829.51	40.4681238	-104.7426077	0.00
13325.00	90.32	90.13	6951.49	7044.26	1287.39	6929.51	40.4681231	-104.7422483	0.00
13425.00	90.32	90.13	6950.93	7143.09	1287.16	7029.51	40.4681223	-104.7418889	0.00
13525.00	90.32	90.13	6950.37	7241.92	1286.93	7129.50	40.4681216	-104.7415295	0.00
13625.00	90.32	90.13	6949.81	7340.75	1286.69	7229.50	40.4681209	-104.7411701	0.00
13725.00	90.32	90.13	6949.26	7439.58	1286.46	7329.50	40.4681202	-104.7408107	0.00
13825.00	90.32	90.13	6948.70	7538.41	1286.22	7429.50	40.4681194	-104.7404513	0.00
13925.00	90.32	90.13	6948.14	7637.23	1285.99	7529.50	40.4681187	-104.7400920	0.00
14025.00	90.32	90.13	6947.58	7736.06	1285.76	7629.49	40.4681180	-104.7397326	0.00
14125.00	90.32	90.13	6947.02	7834.89	1285.52	7729.49	40.4681173	-104.7393732	0.00
14225.00	90.32	90.13	6946.47	7933.72	1285.29	7829.49	40.4681165	-104.7390138	0.00
14325.00	90.32	90.13	6945.91	8032.55	1285.06	7929.49	40.4681158	-104.7386544	0.00
14425.00	90.32	90.13	6945.35	8131.38	1284.82	8029.49	40.4681151	-104.7382950	0.00
14525.00	90.32	90.13	6944.79	8230.21	1284.59	8129.49	40.4681144	-104.7379356	0.00

TROUDT_8N-23B-M_PWP__REV-A.0_.las

14625.00	90.32	90.13	6944.23	8329.04	1284.36	8229.48	40.4681136	-104.7375762	0.00
14725.00	90.32	90.13	6943.68	8427.86	1284.12	8329.48	40.4681129	-104.7372168	0.00
14825.00	90.32	90.13	6943.12	8526.69	1283.89	8429.48	40.4681122	-104.7368574	0.00
14845.98	90.32	90.13	6943.00	8547.43	1283.84	8450.46	40.4681120	-104.7367820	0.00



Planned Wellpath Report

TROUDT 8N-23B-M PWP (REV-A.0)

Page 1 of 8



REFERENCE WELLPATH IDENTIFICATION			
Operator	SRC ENERGY	Slot	SLOT#10 TROUDT 8N-23B-M (760'FNL & 1730'FWL, SEC.27)
Area	COLORADO	Well	TROUDT 8N-23B-M
Field	WELD COUNTY (NAD83, TRUE NORTH)	Wellbore	TROUDT 8N-23B-M PWB
Facility	SEC.27-T06N-R66W		

REPORT SETUP INFORMATION			
Projection System	NAD83 / Lambert Colorado SP, Northern Zone (501), US feet	Software System	WellArchitect® 5.0
North Reference	True	User	Doddanna
Scale	0.999964	Report Generated	9/18/2017 at 2:31:04 PM
Convergence at slot	0.47° East	Database/Source file	WellArchitectDB/TROUDT_8N-23B-M_PWP__REV-A.0_.xml

WELLPATH LOCATION						
	Local coordinates		Grid coordinates		Geographic coordinates	
	North[ft]	East[ft]	Easting[US ft]	Northing[US ft]	Latitude	Longitude
Slot Location	0.00	134.95	3203908.69	1412933.83	40°27'52.531"N	104°46'01.751"W
Facility Reference Pt			3203773.74	1412932.71	40°27'52.531"N	104°46'03.497"W
Field Reference Pt			3171284.48	1426358.81	40°30'07.643"N	104°53'02.634"W

WELLPATH DATUM			
Calculation method	Minimum curvature	PD 562 (25') (RKB) to Facility Vertical Datum	4744.00ft
Horizontal Reference Pt	Slot	PD 562 (25') (RKB) to Mean Sea Level	4744.00ft
Vertical Reference Pt	PD 562 (25') (RKB)	PD 562 (25') (RKB) to Mud Line at Slot (SLOT#10 TROUDT 8N-23B-M (760'FNL & 1730'FWL, SEC.27))	4744.00ft
MD Reference Pt	PD 562 (25') (RKB)	Section Origin	N 0.00, E 0.00 ft
Field Vertical Reference	Mean Sea Level	Section Azimuth	81.36°



Planned Wellpath Report

TROUDT 8N-23B-M PWP (REV-A.0)

Page 2 of 8



REFERENCE WELLPATH IDENTIFICATION			
Operator	SRC ENERGY	Slot	SLOT#10 TROUDT 8N-23B-M (760'FNL & 1730'FWL, SEC.27)
Area	COLORADO	Well	TROUDT 8N-23B-M
Field	WELD COUNTY (NAD83, TRUE NORTH)	Wellbore	TROUDT 8N-23B-M PWB
Facility	SEC.27-T06N-R66W		

WELLPATH DATA (155 stations) † = interpolated/extrapolated station								
MD [ft]	Inclination [°]	Azimuth [°]	TVD [ft]	Vert Sect [ft]	North [ft]	East [ft]	DLS [°/100ft]	Comments
0.00†	0.000	21.417	0.00	0.00	0.00	0.00	0.00	
25.00	0.000	21.417	25.00	0.00	0.00	0.00	0.00	Tie On
125.00†	0.000	21.417	125.00	0.00	0.00	0.00	0.00	
225.00†	0.000	21.417	225.00	0.00	0.00	0.00	0.00	
300.00	0.000	21.417	300.00	0.00	0.00	0.00	0.00	End of Tangent
325.00†	0.500	21.417	325.00	0.05	0.10	0.04	2.00	
425.00†	2.500	21.417	424.96	1.37	2.54	1.00	2.00	
525.00†	4.500	21.417	524.77	4.42	8.22	3.22	2.00	
625.00†	6.500	21.417	624.30	9.22	17.14	6.72	2.00	
725.00†	8.500	21.417	723.44	15.76	29.29	11.49	2.00	
825.00†	10.500	21.417	822.07	24.03	44.66	17.52	2.00	
918.70	12.374	21.417	913.90	33.33	61.95	24.30	2.00	End of Build
925.00†	12.374	21.417	920.06	34.01	63.21	24.79	0.00	
1025.00†	12.374	21.417	1017.73	44.74	83.16	32.62	0.00	
1125.00†	12.374	21.417	1115.41	55.47	103.11	40.44	0.00	
1225.00†	12.374	21.417	1213.09	66.20	123.06	48.27	0.00	
1325.00†	12.374	21.417	1310.76	76.94	143.01	56.09	0.00	
1425.00†	12.374	21.417	1408.44	87.67	162.96	63.92	0.00	
1525.00†	12.374	21.417	1506.12	98.40	182.91	71.74	0.00	
1625.00†	12.374	21.417	1603.79	109.13	202.86	79.57	0.00	
1725.00†	12.374	21.417	1701.47	119.87	222.81	87.39	0.00	
1825.00†	12.374	21.417	1799.15	130.60	242.76	95.22	0.00	
1925.00†	12.374	21.417	1896.83	141.33	262.71	103.04	0.00	
2025.00†	12.374	21.417	1994.50	152.06	282.66	110.87	0.00	
2125.00†	12.374	21.417	2092.18	162.80	302.61	118.69	0.00	
2225.00†	12.374	21.417	2189.86	173.53	322.55	126.52	0.00	
2325.00†	12.374	21.417	2287.53	184.26	342.50	134.34	0.00	
2425.00†	12.374	21.417	2385.21	194.99	362.45	142.17	0.00	
2525.00†	12.374	21.417	2482.89	205.73	382.40	149.99	0.00	
2625.00†	12.374	21.417	2580.56	216.46	402.35	157.82	0.00	



Planned Wellpath Report

TROUDT 8N-23B-M PWP (REV-A.0)

Page 3 of 8



REFERENCE WELLPATH IDENTIFICATION			
Operator	SRC ENERGY	Slot	SLOT#10 TROUDT 8N-23B-M (760'FNL & 1730'FWL, SEC.27)
Area	COLORADO	Well	TROUDT 8N-23B-M
Field	WELD COUNTY (NAD83, TRUE NORTH)	Wellbore	TROUDT 8N-23B-M PWB
Facility	SEC.27-T06N-R66W		

WELLPATH DATA (155 stations) † = interpolated/extrapolated station								
MD [ft]	Inclination [°]	Azimuth [°]	TVD [ft]	Vert Sect [ft]	North [ft]	East [ft]	DLS [°/100ft]	Comments
2725.00†	12.374	21.417	2678.24	227.19	422.30	165.64	0.00	
2825.00†	12.374	21.417	2775.92	237.92	442.25	173.46	0.00	
2925.00†	12.374	21.417	2873.59	248.66	462.20	181.29	0.00	
3025.00†	12.374	21.417	2971.27	259.39	482.15	189.11	0.00	
3125.00†	12.374	21.417	3068.95	270.12	502.10	196.94	0.00	
3225.00†	12.374	21.417	3166.63	280.85	522.05	204.76	0.00	
3325.00†	12.374	21.417	3264.30	291.59	542.00	212.59	0.00	
3425.00†	12.374	21.417	3361.98	302.32	561.95	220.41	0.00	
3525.00†	12.374	21.417	3459.66	313.05	581.90	228.24	0.00	
3625.00†	12.374	21.417	3557.33	323.78	601.85	236.06	0.00	
3725.00†	12.374	21.417	3655.01	334.52	621.80	243.89	0.00	
3825.00†	12.374	21.417	3752.69	345.25	641.75	251.71	0.00	
3925.00†	12.374	21.417	3850.36	355.98	661.70	259.54	0.00	
4025.00†	12.374	21.417	3948.04	366.71	681.64	267.36	0.00	
4125.00†	12.374	21.417	4045.72	377.45	701.59	275.19	0.00	
4225.00†	12.374	21.417	4143.40	388.18	721.54	283.01	0.00	
4325.00†	12.374	21.417	4241.07	398.91	741.49	290.84	0.00	
4425.00†	12.374	21.417	4338.75	409.64	761.44	298.66	0.00	
4525.00†	12.374	21.417	4436.43	420.38	781.39	306.49	0.00	
4625.00†	12.374	21.417	4534.10	431.11	801.34	314.31	0.00	
4725.00†	12.374	21.417	4631.78	441.84	821.29	322.14	0.00	
4825.00†	12.374	21.417	4729.46	452.57	841.24	329.96	0.00	
4925.00†	12.374	21.417	4827.13	463.31	861.19	337.79	0.00	
5025.00†	12.374	21.417	4924.81	474.04	881.14	345.61	0.00	
5125.00†	12.374	21.417	5022.49	484.77	901.09	353.43	0.00	
5225.00†	12.374	21.417	5120.17	495.50	921.04	361.26	0.00	
5325.00†	12.374	21.417	5217.84	506.24	940.99	369.08	0.00	
5425.00†	12.374	21.417	5315.52	516.97	960.94	376.91	0.00	
5525.00†	12.374	21.417	5413.20	527.70	980.89	384.73	0.00	
5625.00†	12.374	21.417	5510.87	538.43	1000.84	392.56	0.00	



Planned Wellpath Report

TROUDT 8N-23B-M PWP (REV-A.0)

Page 4 of 8



REFERENCE WELLPATH IDENTIFICATION			
Operator	SRC ENERGY	Slot	SLOT#10 TROUDT 8N-23B-M (760'FNL & 1730'FWL, SEC.27)
Area	COLORADO	Well	TROUDT 8N-23B-M
Field	WELD COUNTY (NAD83, TRUE NORTH)	Wellbore	TROUDT 8N-23B-M PWB
Facility	SEC.27-T06N-R66W		

WELLPATH DATA (155 stations) † = interpolated/extrapolated station								
MD [ft]	Inclination [°]	Azimuth [°]	TVD [ft]	Vert Sect [ft]	North [ft]	East [ft]	DLS [°/100ft]	Comments
5725.00†	12.374	21.417	5608.55	549.17	1020.79	400.38	0.00	
5825.00†	12.374	21.417	5706.23	559.90	1040.74	408.21	0.00	
5925.00†	12.374	21.417	5803.90	570.63	1060.68	416.03	0.00	
6025.00†	12.374	21.417	5901.58	581.36	1080.63	423.86	0.00	
6125.00†	12.374	21.417	5999.26	592.10	1100.58	431.68	0.00	
6225.00†	12.374	21.417	6096.94	602.83	1120.53	439.51	0.00	
6325.00†	12.374	21.417	6194.61	613.56	1140.48	447.33	0.00	
6425.00†	12.374	21.417	6292.29	624.29	1160.43	455.16	0.00	
6525.00†	12.374	21.417	6389.97	635.03	1180.38	462.98	0.00	
6544.42	12.374	21.417	6408.94	637.11	1184.26	464.50	0.00	End of Tangent
6625.00†	16.401	46.104	6487.04	650.74	1200.20	475.87	9.00	
6725.00†	23.602	62.186	6581.02	681.24	1219.37	503.80	9.00	
6825.00†	31.699	70.747	6669.56	726.06	1237.41	546.40	9.00	
6925.00†	40.151	76.051	6750.49	784.11	1253.88	602.61	9.00	
7025.00†	48.772	79.754	6821.80	853.94	1268.37	671.05	9.00	
7125.00†	57.484	82.584	6881.76	933.85	1280.53	750.02	9.00	
7225.00†	66.248	84.910	6928.87	1021.86	1290.05	837.60	9.00	
7325.00†	75.043	86.939	6961.98	1115.81	1296.70	931.61	9.00	
7425.00†	83.854	88.808	6980.27	1213.38	1300.32	1029.75	9.00	
7498.33	90.320	90.134	6984.00 ¹	1285.85	1301.00	1102.95	9.00	End of 3D Arc
7525.00†	90.320	90.134	6983.85	1312.20	1300.94	1129.61	0.00	
7625.00†	90.320	90.134	6983.29	1411.03	1300.70	1229.61	0.00	
7725.00†	90.320	90.134	6982.74	1509.86	1300.47	1329.61	0.00	
7825.00†	90.320	90.134	6982.18	1608.69	1300.24	1429.61	0.00	
7925.00†	90.320	90.134	6981.62	1707.52	1300.00	1529.61	0.00	
8025.00†	90.320	90.134	6981.06	1806.34	1299.77	1629.60	0.00	
8125.00†	90.320	90.134	6980.50	1905.17	1299.53	1729.60	0.00	
8225.00†	90.320	90.134	6979.95	2004.00	1299.30	1829.60	0.00	
8325.00†	90.320	90.134	6979.39	2102.83	1299.07	1929.60	0.00	
8425.00†	90.320	90.134	6978.83	2201.66	1298.83	2029.60	0.00	



Planned Wellpath Report

TROUDT 8N-23B-M PWP (REV-A.0)

Page 5 of 8



REFERENCE WELLPATH IDENTIFICATION			
Operator	SRC ENERGY	Slot	SLOT#10 TROUDT 8N-23B-M (760'FNL & 1730'FWL, SEC.27)
Area	COLORADO	Well	TROUDT 8N-23B-M
Field	WELD COUNTY (NAD83, TRUE NORTH)	Wellbore	TROUDT 8N-23B-M PWB
Facility	SEC.27-T06N-R66W		

WELLPATH DATA (155 stations) † = interpolated/extrapolated station								
MD [ft]	Inclination [°]	Azimuth [°]	TVD [ft]	Vert Sect [ft]	North [ft]	East [ft]	DLS [°/100ft]	Comments
8525.00†	90.320	90.134	6978.27	2300.49	1298.60	2129.59	0.00	
8625.00†	90.320	90.134	6977.71	2399.32	1298.37	2229.59	0.00	
8725.00†	90.320	90.134	6977.16	2498.15	1298.13	2329.59	0.00	
8825.00†	90.320	90.134	6976.60	2596.97	1297.90	2429.59	0.00	
8925.00†	90.320	90.134	6976.04	2695.80	1297.67	2529.59	0.00	
9025.00†	90.320	90.134	6975.48	2794.63	1297.43	2629.59	0.00	
9125.00†	90.320	90.134	6974.92	2893.46	1297.20	2729.58	0.00	
9225.00†	90.320	90.134	6974.37	2992.29	1296.97	2829.58	0.00	
9325.00†	90.320	90.134	6973.81	3091.12	1296.73	2929.58	0.00	
9425.00†	90.320	90.134	6973.25	3189.95	1296.50	3029.58	0.00	
9525.00†	90.320	90.134	6972.69	3288.77	1296.27	3129.58	0.00	
9625.00†	90.320	90.134	6972.13	3387.60	1296.03	3229.57	0.00	
9725.00†	90.320	90.134	6971.58	3486.43	1295.80	3329.57	0.00	
9825.00†	90.320	90.134	6971.02	3585.26	1295.57	3429.57	0.00	
9925.00†	90.320	90.134	6970.46	3684.09	1295.33	3529.57	0.00	
10025.00†	90.320	90.134	6969.90	3782.92	1295.10	3629.57	0.00	
10125.00†	90.320	90.134	6969.34	3881.75	1294.86	3729.57	0.00	
10225.00†	90.320	90.134	6968.79	3980.57	1294.63	3829.56	0.00	
10325.00†	90.320	90.134	6968.23	4079.40	1294.40	3929.56	0.00	
10425.00†	90.320	90.134	6967.67	4178.23	1294.16	4029.56	0.00	
10525.00†	90.320	90.134	6967.11	4277.06	1293.93	4129.56	0.00	
10625.00†	90.320	90.134	6966.55	4375.89	1293.70	4229.56	0.00	
10725.00†	90.320	90.134	6966.00	4474.72	1293.46	4329.55	0.00	
10825.00†	90.320	90.134	6965.44	4573.55	1293.23	4429.55	0.00	
10925.00†	90.320	90.134	6964.88	4672.38	1293.00	4529.55	0.00	
11025.00†	90.320	90.134	6964.32	4771.20	1292.76	4629.55	0.00	
11125.00†	90.320	90.134	6963.76	4870.03	1292.53	4729.55	0.00	
11225.00†	90.320	90.134	6963.21	4968.86	1292.30	4829.55	0.00	
11325.00†	90.320	90.134	6962.65	5067.69	1292.06	4929.54	0.00	
11425.00†	90.320	90.134	6962.09	5166.52	1291.83	5029.54	0.00	



Planned Wellpath Report

TROUDT 8N-23B-M PWP (REV-A.0)

Page 6 of 8



REFERENCE WELLPATH IDENTIFICATION			
Operator	SRC ENERGY	Slot	SLOT#10 TROUDT 8N-23B-M (760'FNL & 1730'FWL, SEC.27)
Area	COLORADO	Well	TROUDT 8N-23B-M
Field	WELD COUNTY (NAD83, TRUE NORTH)	Wellbore	TROUDT 8N-23B-M PWB
Facility	SEC.27-T06N-R66W		

WELLPATH DATA (155 stations) † = interpolated/extrapolated station								
MD [ft]	Inclination [°]	Azimuth [°]	TVD [ft]	Vert Sect [ft]	North [ft]	East [ft]	DLS [°/100ft]	Comments
11525.00†	90.320	90.134	6961.53	5265.35	1291.60	5129.54	0.00	
11625.00†	90.320	90.134	6960.97	5364.18	1291.36	5229.54	0.00	
11725.00†	90.320	90.134	6960.42	5463.00	1291.13	5329.54	0.00	
11825.00†	90.320	90.134	6959.86	5561.83	1290.90	5429.53	0.00	
11925.00†	90.320	90.134	6959.30	5660.66	1290.66	5529.53	0.00	
12025.00†	90.320	90.134	6958.74	5759.49	1290.43	5629.53	0.00	
12125.00†	90.320	90.134	6958.18	5858.32	1290.19	5729.53	0.00	
12225.00†	90.320	90.134	6957.63	5957.15	1289.96	5829.53	0.00	
12325.00†	90.320	90.134	6957.07	6055.98	1289.73	5929.53	0.00	
12425.00†	90.320	90.134	6956.51	6154.81	1289.49	6029.52	0.00	
12525.00†	90.320	90.134	6955.95	6253.63	1289.26	6129.52	0.00	
12625.00†	90.320	90.134	6955.39	6352.46	1289.03	6229.52	0.00	
12725.00†	90.320	90.134	6954.84	6451.29	1288.79	6329.52	0.00	
12825.00†	90.320	90.134	6954.28	6550.12	1288.56	6429.52	0.00	
12925.00†	90.320	90.134	6953.72	6648.95	1288.33	6529.51	0.00	
13025.00†	90.320	90.134	6953.16	6747.78	1288.09	6629.51	0.00	
13125.00†	90.320	90.134	6952.60	6846.61	1287.86	6729.51	0.00	
13225.00†	90.320	90.134	6952.05	6945.43	1287.63	6829.51	0.00	
13325.00†	90.320	90.134	6951.49	7044.26	1287.39	6929.51	0.00	
13425.00†	90.320	90.134	6950.93	7143.09	1287.16	7029.51	0.00	
13525.00†	90.320	90.134	6950.37	7241.92	1286.93	7129.50	0.00	
13625.00†	90.320	90.134	6949.81	7340.75	1286.69	7229.50	0.00	
13725.00†	90.320	90.134	6949.26	7439.58	1286.46	7329.50	0.00	
13825.00†	90.320	90.134	6948.70	7538.41	1286.22	7429.50	0.00	
13925.00†	90.320	90.134	6948.14	7637.23	1285.99	7529.50	0.00	
14025.00†	90.320	90.134	6947.58	7736.06	1285.76	7629.49	0.00	
14125.00†	90.320	90.134	6947.02	7834.89	1285.52	7729.49	0.00	
14225.00†	90.320	90.134	6946.47	7933.72	1285.29	7829.49	0.00	
14325.00†	90.320	90.134	6945.91	8032.55	1285.06	7929.49	0.00	
14425.00†	90.320	90.134	6945.35	8131.38	1284.82	8029.49	0.00	



Planned Wellpath Report

TROUDT 8N-23B-M PWP (REV-A.0)

Page 7 of 8



REFERENCE WELLPATH IDENTIFICATION			
Operator	SRC ENERGY	Slot	SLOT#10 TROUDT 8N-23B-M (760'FNL & 1730'FWL, SEC.27)
Area	COLORADO	Well	TROUDT 8N-23B-M
Field	WELD COUNTY (NAD83, TRUE NORTH)	Wellbore	TROUDT 8N-23B-M PWB
Facility	SEC.27-T06N-R66W		

WELLPATH DATA (155 stations) † = interpolated/extrapolated station								
MD [ft]	Inclination [°]	Azimuth [°]	TVD [ft]	Vert Sect [ft]	North [ft]	East [ft]	DLS [°/100ft]	Comments
14525.00†	90.320	90.134	6944.79	8230.21	1284.59	8129.49	0.00	
14625.00†	90.320	90.134	6944.23	8329.04	1284.36	8229.48	0.00	
14725.00†	90.320	90.134	6943.68	8427.86	1284.12	8329.48	0.00	
14825.00†	90.320	90.134	6943.12	8526.69	1283.89	8429.48	0.00	
14845.98	90.320	90.134	6943.00 ²	8547.43	1283.84	8450.46	0.00	End of Tangent

HOLE & CASING SECTIONS - Ref Wellbore: TROUDT 8N-23B-M PWB Ref Wellpath: TROUDT 8N-23B-M PWP (REV-A.0)									
String/Diameter	Start MD [ft]	End MD [ft]	Interval [ft]	Start TVD [ft]	End TVD [ft]	Start N/S [ft]	Start E/W [ft]	End N/S [ft]	End E/W [ft]
13.5in Open Hole	25.00	1750.00	1725.00	25.00	1725.89	0.00	0.00	227.79	89.35
9.625in Casing Surface	25.00	1750.00	1725.00	25.00	1725.89	0.00	0.00	227.79	89.35
8.5in Open Hole	1750.00	14845.98	13095.98	1725.89	6943.00	227.79	89.35	1283.84	8450.46



Planned Wellpath Report

TROUDT 8N-23B-M PWP (REV-A.0)

Page 8 of 8



REFERENCE WELLPATH IDENTIFICATION			
Operator	SRC ENERGY	Slot	SLOT#10 TROUDT 8N-23B-M (760'FNL & 1730'FWL, SEC.27)
Area	COLORADO	Well	TROUDT 8N-23B-M
Field	WELD COUNTY (NAD83, TRUE NORTH)	Wellbore	TROUDT 8N-23B-M PWB
Facility	SEC.27-T06N-R66W		

TARGETS									
Name	MD [ft]	TVD [ft]	North [ft]	East [ft]	Grid East [US ft]	Grid North [US ft]	Latitude	Longitude	Shape
SEC.28-T06N-R66W		0.00	0.00	-134.95	3203773.74	1412932.71	40°27'52.531"N	104°46'03.497"W	polygon
SEC.22-T06N-R66W		1.00	1412.75	-8144.09	3195753.51	1414279.17	40°28'06.478"N	104°47'47.123"W	polygon
SEC.23-T06N-R66W		1.00	4231.30	-2002.26	3201871.60	1417148.27	40°28'34.342"N	104°46'27.660"W	polygon
SEC.26-T06N-R66W		1.00	-4763.04	540.21	3204488.23	1408175.60	40°27'05.465"N	104°45'54.763"W	polygon
SEC.27-T06N-R66W		1.00	-4763.04	540.21	3204488.23	1408175.60	40°27'05.465"N	104°45'54.763"W	polygon
2) TROUDT 8N-23B-M BHL ON PLAT (556'FSL & 510'FEL, SEC.23)	14845.98	6943.00	1283.84	8450.46	3212347.93	1414287.41	40°28'05.203"N	104°44'12.415"W	circle
1) TROUDT 8N-23B-M TOP OF PROD ON PLAT (548'FSL & 2527'FEL, SEC.22)	7498.33	6984.00	1301.00	1102.95	3205000.80	1414243.84	40°28'05.387"N	104°45'47.480"W	circle

SURVEY PROGRAM - Ref Wellbore: TROUDT 8N-23B-M PWB Ref Wellpath: TROUDT 8N-23B-M PWP (REV-A.0)				
Start MD [ft]	End MD [ft]	Positional Uncertainty Model	Log Name/Comment	Wellbore
25.00	1750.00	Custom BHI NaviTrak (Standard Rotating+Axial Corr) (Rockies 0.03Gt model)		TROUDT 8N-23B-M PWB
1750.00	14845.98	Custom BHI AutoTrak Curve (IFR1, Short) (Rockies 0.03Gt model)		TROUDT 8N-23B-M PWB