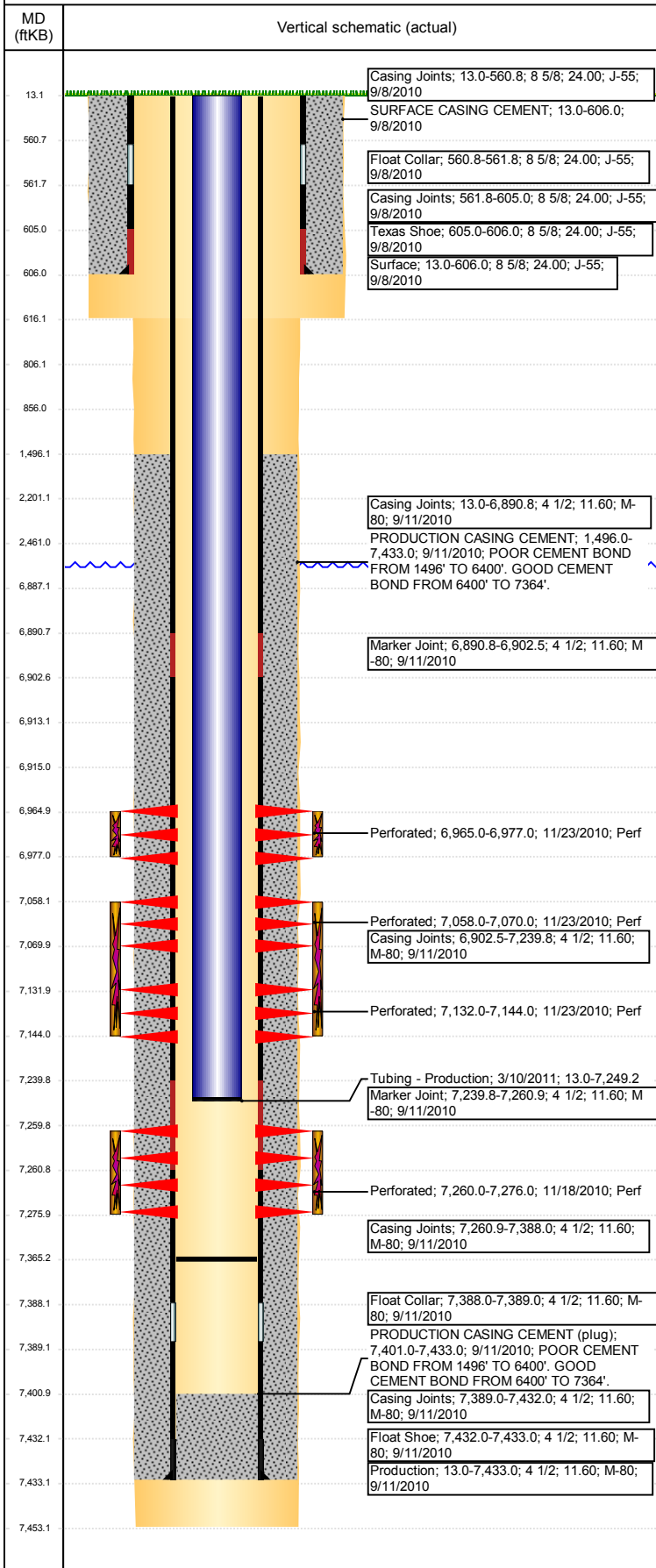


Well Name: BOULTER G22-32D

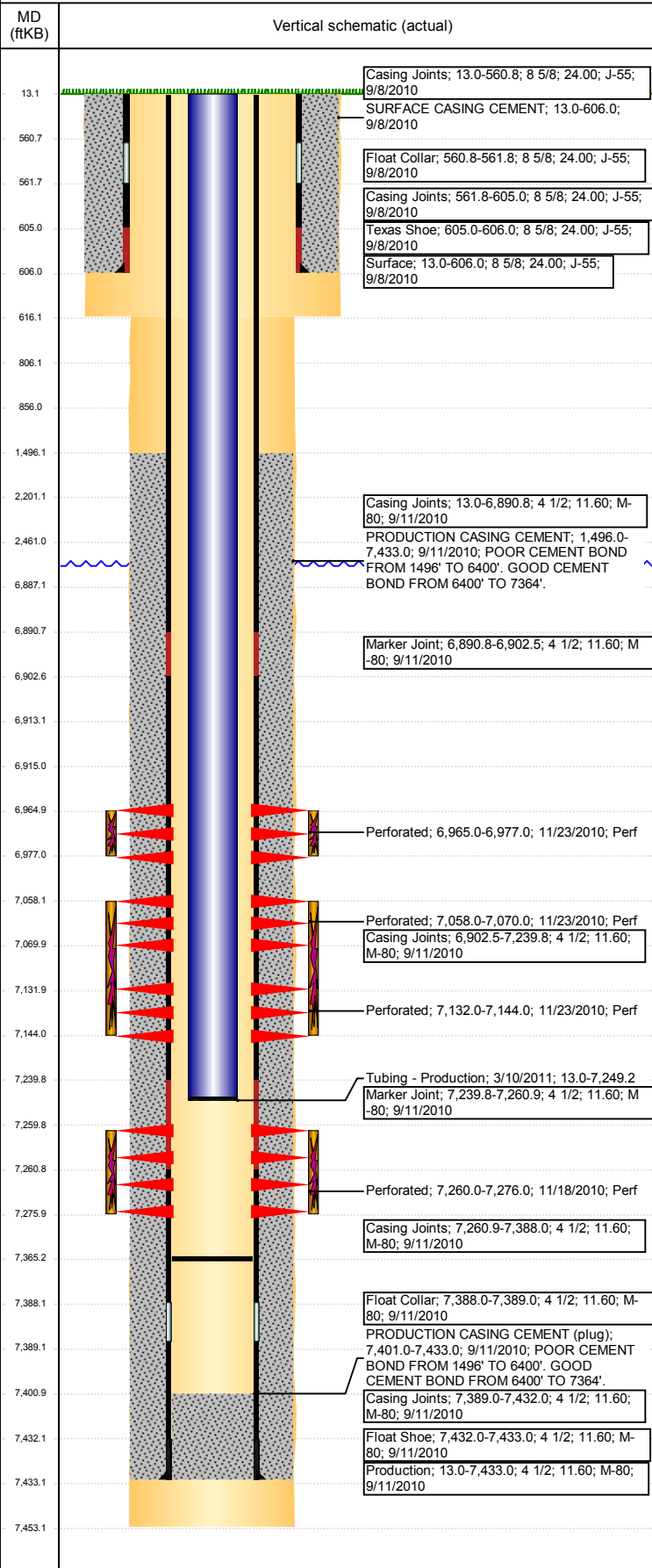
DEVIATED - ORIGINAL HOLE, 11/10/2017 11:28:37 AM



Well Header					
API	05-123-30803	Business Unit	DJ BASIN	District	15
Original KB Elevation (ft)	4,821	KB - GL / MSL (ftKB)	13.00	Spud Date	9/8/2010
Well Config	DEVIATED				
P & A Date					
Comment					
DEVIATED WELL. SUNDRY NOTICE FOR WELL REPAIR & REMEDIAL CEMENT JOB ENTERED BUT NO INFO IN FILE OF JOB BEING DONE. ??? POOR CEMENT BOND 1496'-6400', REFER TO CBL.					
Directions To Well					
CR 44 & CR 43 South 1/2 mile, West 600' to location					
Congressional Location					
Quarter 3	Quarter 4	Section	Township	TwNS Dir	Range
SE	NE	21	4	N	65
Range E/W Dir	W				
Bottom Hole Location					
North-South Distance (ft)	From N or S Line	East-West Distance (ft)	From E or W Line		
2,590.0	FNL	47.0	FEL		
Plug Back Total Depths					
Date	Depth (ftKB)	Method	Com		
9/11/2010	7,401.0	CASING TALLY	FLOAT COLLAR		
9/21/2010	7,365.0	CASED HOLE LOG	CBL		
3/9/2011	7,365.0	TUBING TALLY	89' OF RAT HOLE		
Wellbore Sections					
Section Des	Size (in)	Act Top, MD (ftKB)	Act Btm, MD (ftKB)		
SURFACE	12 1/4	13	616		
PRODUCTION	7 7/8	616	7,453		
Zone Statuses					
Zone Name	Status Date	Status	Fluid Type	Job	Prod Method
CODELL	11/24/2010	PR		DRILLING/CO...	
NIOBRARA	11/24/2010	PR		DRILLING/CO...	
Casing Strings					
Surface, 606.0ftKB					
Casing Description	Run Date	OD (in)	Wt/Len (l...)	Grade	Top, MD (ft...)
Surface	9/8/2010	8 5/8	24.00	J-55	13.0
MD (ftKB)	606.0				
Production, 7,433.0ftKB					
Casing Description	Run Date	OD (in)	Wt/Len (l...)	Grade	Top, MD (ft...)
Production	9/11/2010	4 1/2	11.60	M-80	13.0
MD (ftKB)	7,433.0				
Cement					
Description	Top Depth (ftKB)	Bottom Depth (ftKB)			
SURFACE CASING CEMENT	13.0	606.0			
PRODUCTION CASING CEMENT	1,496.0	7,433.0			
DUMP BAIL	6,887.0	6,913.0			
SHOE PLUG	13.1	806.0			
SHOE PLUG	806.0	856.0			
CEMENT PLUG	2,201.0	2,461.0			
Tubing Strings					
Tubing Description	Run Date	String...	ID (in)	Wt (lb/ft)	Grade
Tubing - Production	3/10/2011	2 3/8	2.00	4.70	J-55
Len (ft)	7,236.15				
Set De...	7,161.9				
Tubing Components					
Item Des	OD (in)	Wt (lb/ft)	Grade	Jts	Len (ft)
Tubing	2 3/8	4.70	J-55	236	7,234.50
Pump Seating	2 3/8	4.70	J-55	1	1.10
Nipple	2 3/8	4.70	J-55	1	0.55
Notched collar	2 3/8	4.70	J-55	1	0.55
Btm (ftKB)	7,247.5				
Btm (TVD) (ftKB)	7,161.4				
Btm (ftKB)	7,249.2				
Btm (TVD) (ftKB)	7,161.9				
Other In Hole					
Run Date	Des	OD (in)	Top (ftKB)	Btm (ftKB)	
11/3/2017	Cast Iron Bridge Plug	4	6,913.0	6,915.0	
Logs					
Date	Type	Top, MD (ftKB)	Btm, MD (ftKB)		
9/21/2009	CBL/CCL/GR	1,350.0	7,364.0		
9/11/2010	SPECTRAL DENSITY/Pe/DSN NEUTRON/SP/ARRAY COMPENSATED TRUE RESISTIVITY/6 ARM CALIPER	608.0	7,439.0		

Well Name: BOULTER G22-32D

DEVIATED - ORIGINAL HOLE, 11/10/2017 11:28:38 AM



Logs			
Date	Type	Top, MD (ftKB)	Btm, MD (ftKB)
9/11/2010	SPECTRAL GAMMA RAY	608.0	7,439.0

Perforation Data					
Linked Zone	Bnch/St g	Sum of Entered Shot Total	Top (ftKB)	Btm (ftKB)	Date
NIOBRARA, ORIGINAL HOLE	A	24	6,965.00	6,977.00	11/23/2010
NIOBRARA, ORIGINAL HOLE	B	24	7,058.00	7,070.00	11/23/2010
NIOBRARA, ORIGINAL HOLE	C	24	7,132.00	7,144.00	11/23/2010
CODELL, ORIGINAL HOLE	01	64	7,260.00	7,276.00	11/18/2010
Total (Sum)		136			

Stimulation Intervals		
Start Date	Primary Job Type	
11/23/2010	DRILLING/COMPLETION - ORIGINAL	
Technical Result	Tech Result Details	Tech Result Note
Success	According to Plan	

Comment (CODELL) REVERSE RESULTS PERFS OPEN=15, NWB=144, PERF FRICTION=728, WELLBORE=163, TOTAL=1035. ISIP=2297, 5 MIN=1160. CALLED OFFICE AND DECIDED TO PUMP CODELL AT 30 BPM. HAD TO SHUT DOWN DURING X-LINK PAD DUE TO A WASHED OUT POP-OFF. VAC TRUCK WAS CALLED OUT AND MESS WAS CLEANED UP, APPROXIMATELY 2 BBLs WAS SPILLED. EXTENDED X-LINK PAD 100 BBLs. HAD TO BRING FRAC PUMP OFF-LINE DURING 1LB STG, STOCK WAS LEAKING. AVG VISC=29.8, PH=10.18, TEMP=62.4, PRESS=4092, RATE=30.5.

Start Date	Primary Job Type	
11/23/2010	DRILLING/COMPLETION - ORIGINAL	
Technical Result	Tech Result Details	Tech Result Note
Success	According to Plan	

Comment (NIOBRARA B&C) FRAC PUMP KICKED OUT DURING 1LB STG. SAME FRAC PUMP KICKED OUT DURING THE 3LB STG, TRANSDUCER ISSUE. AVG VISC=24.8, PH=10.12, TEMP=64.8, PRESS=4604, RATE=46.3.

Start Date	Primary Job Type	
11/23/2010	DRILLING/COMPLETION - ORIGINAL	
Technical Result	Tech Result Details	Tech Result Note
Success	According to Plan	

Comment (NIOBRARA A) OPERATIONALLY JOB WENT WELL WITH NO ISSUES TO REPORT. AVG VISC=24.6, PH=10.21, TEMP=69.3, PRESS=4658, RATE=39.3.