

Inspection Photos

11/09/2017

Operator: ST CROIX OPERATING INC - 81490

Location ID: 452312

Inspection Doc. Number: 682502777

Washington County, CO

Aaron Trujillo
NE Reclamation Specialist
COGCC

Inspection Photos
Operator: ST CROIX OPERATING INC - 81490
Location ID: 452312



Photo 1: Photo taken from the east end of the location, facing south. Photos 1-3 provide a “panoramic” overview of the location. Photo shows that, with exception to the pit, no topsoil salvage has been conducted on the location. All equipment has been stored directly upon the soil surface/topsoil.



Photo 2: Photo taken from the east end of the location, facing southwest. See comments under photo 1.

Inspection Photos
Operator: ST CROIX OPERATING INC - 81490
Location ID: 452312



Photo 3: Photo taken from the east end of the location, facing west. See comments under photo 1.



Photo 4: Photo taken from the east side of the pit. Photo shows materials have been placed onto a tarp.

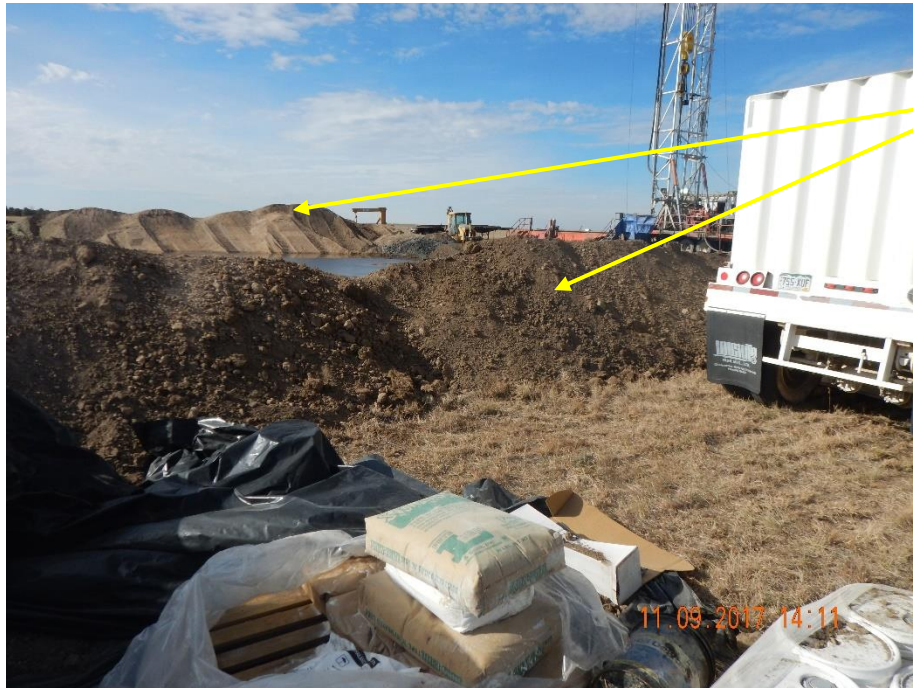


Photo 5: Photo taken from the east end of the pit. Previous inspections documented that soil around pit are loose materials and have not been stabilized. Inspection required operator to implement BMPs to stabilize soils. Photo shows soil stockpile berm on the east (and west) end of the pit remains unstabilized.

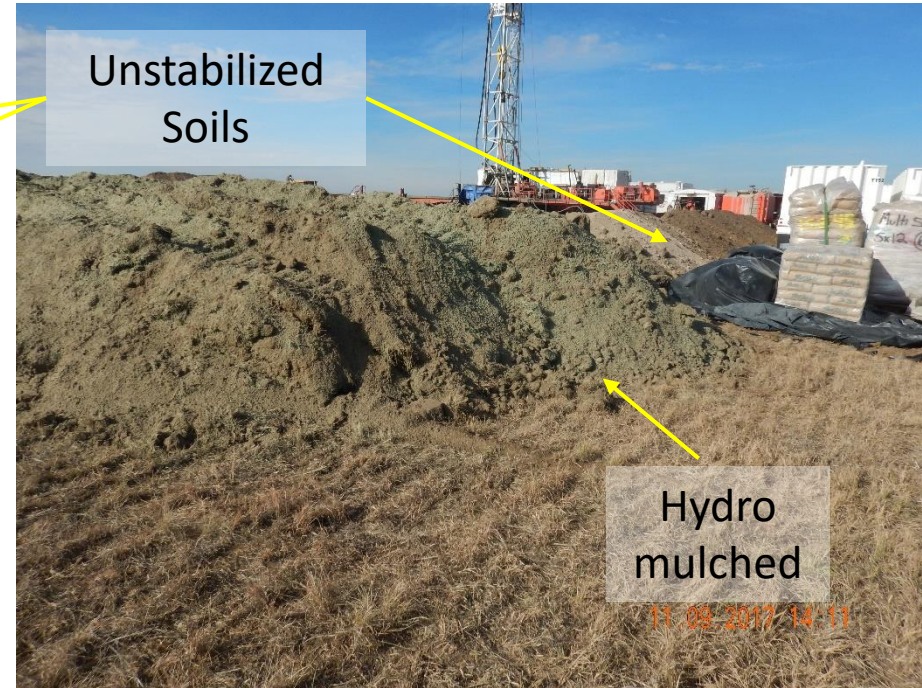


Photo 6: Photo taken from the east end of the pit. Previous inspections documented that soil around pit are loose materials and have not been stabilized. Inspection required operator to implement BMPs to stabilize soils. Photo shows operator has implemented hydro mulch on the southern portion of the soil stockpile, however, soil stockpile berm on the east end of the pit remains unstabilized.

Inspection Photos
Operator: ST CROIX OPERATING INC - 81490
Location ID: 452312



Photo 7: Photo taken from the southwest end of the location, facing northeast. Photo shows operator has implemented hydro mulch on the southern portion of the soil stockpile



Photo 8: Photo taken from the southwest end of the location, facing east. Photo shows operator has implemented hydro mulch on the southern portion of the soil stockpile

Inspection Photos
Operator: ST CROIX OPERATING INC - 81490
Location ID: 452312



Photo 9: Photo taken from the west end of the location, facing east. Previous inspections documented that soil stockpiles around pit were loose materials and have not been stabilized. Inspection required operator to implement BMPs to stabilize soils. Photo shows soil stockpiles on the east end of the pit remains unstabilized.



Photo 10: Photo taken from the west end of the location, facing east. Photo shows that with exception to the pit, no topsoil salvage has been conducted on the location. Photo shows drill rig has been set up and in operation.

Inspection Photos
Operator: ST CROIX OPERATING INC - 81490
Location ID: 452312



Photo 11: Photo taken from the northwest end of the location, facing east. Photos 11-13 provide a “panoramic” overview of the location. Photo shows that, with exception to the pit, no topsoil salvage has been conducted on the location. All equipment has been stored directly upon the soil surface/topsoil.



Photo 12: Photo taken from the northwest end of the location, facing southeast. See Comments under photo 11

Inspection Photos
Operator: ST CROIX OPERATING INC - 81490
Location ID: 452312



Photo 13: Photo taken from the northwest end of the location, facing south. See Comments under photo 11



Photo 14: Photo taken from the north end of the location, facing south. See Comments under photo 11

Inspection Photos
Operator: ST CROIX OPERATING INC - 81490
Location ID: 452312



Photo 15: Photo taken from the north end of the location, facing south. See Comments under photo 11



Photo 16: Photo taken from the north end of the location, facing north. See Comments under photo 11

Inspection Photos
Operator: ST CROIX OPERATING INC - 81490
Location ID: 452312



Photo 17: Photo taken from the east end of the location, facing west. See Comments under photo 11



Photo 18: Photo shows materials appear to be stored appropriately.



Photo 19: Photo taken from the northeast corner of the pits, facing southwest



Photo 20: Photo taken from the northeast end of the drill rig, facing southwest. Photo drill rig has been set up and operated directly upon the topsoil. Photo also shows what appears to be drilling mud has spilled onto the topsoil from either the pit, or the rig.

Inspection Photos
Operator: ST CROIX OPERATING INC - 81490
Location ID: 452312



Photo 21: Photo taken from the southeast end of the drill rig, facing northeast. Photo shows drill rig has been set up and operated directly upon the topsoil. Photo also shows area where, what appeared to be drilling mud, has spilled onto the topsoil from either the pit, or the rig (see photo 20).



Photo 22: Photo taken from the northwest corner of the pit, facing southeast.