

SRC ENERGY

Location: COLORADO Slot: SLOT#07 TROUDT 41C-23-M (760'FNL & 1684'FWL, SEC.27)
 Field: WELD COUNTY (NAD83, TRUE NORTH) Well: TROUDT 41C-23-M
 Facility: SEC.27-T06N-R66W Wellbore: TROUDT 41C-23-M PWB

Plot reference wellpath is TROUDT 41C-23-M PWP (REV-A.0)
 Grid System: NAD83 / Lambert Colorado SP, Northern Zone (501), US feet
 True vertical depths are referenced to PD 562 (25) (RKB) * = Wellpath was transformed from a different geodetic datum
 Measured depths are referenced to PD 562 (25) (RKB) North Reference: True north
 PD 562 (25) (RKB) to Mean Sea Level: 4744 feet Scale: True distance
 Mean Sea Level to Mud line (At Slot: SLOT#07 TROUDT 41C-23-M (760'FNL & 1684'FWL, SEC.27)): 0 feet Depths are in feet
 Coordinates are in feet referenced to Slot Created by: doddanna on 2017-09-18
 Database: WellArchitectDB

Location Information

Facility Name	Grid East (US ft)	Grid North (US ft)	Latitude	Longitude		
SEC.27-T06N-R66W	320373.744	1412932.710	40°27'52.531"N	104°46'03.497"W		
Slot	Local N (ft)	Local E (ft)	Grid East (US ft)	Grid North (US ft)	Latitude	Longitude
SLOT#07 TROUDT 41C-23-M (760'FNL & 1684'FWL, SEC.27)	0.00	89.68	3203863.614	1412933.453	40°27'52.531"N	104°46'02.334"W
PD 562 (25) (RKB) to Mud line (At Slot: SLOT#07 TROUDT 41C-23-M (760'FNL & 1684'FWL, SEC.27))						4744ft
Mean Sea Level to Mud line (At Slot: SLOT#07 TROUDT 41C-23-M (760'FNL & 1684'FWL, SEC.27))						0ft
PD 562 (25) (RKB) to Mean Sea Level						4744ft

Survey Program

Start MD (ft)	End MD (ft)	Tool	Model	Log Name/Comment	Wellbore
25.00	1750.00	BHI NavTrak	Custom BHI NavTrak (Standard Rotating+Axial Cor) (Rockies 0.03Gt model)		TROUDT 41C-23-M PWB
1750.00	15192.09	BHI AutoTrak Curve	Custom BHI AutoTrak Curve (FRT1, Short) (Rockies 0.03Gt model)		TROUDT 41C-23-M PWB

Targets

Name	MD (ft)	TVD (ft)	Local N (ft)	Local E (ft)	Grid East (US ft)	Grid North (US ft)	Latitude	Longitude
SEC.28-T06N-R66W		0.00	0.00	-89.88	3203773.74	1412932.71	40°27'52.531"N	104°46'03.497"W
SEC.22-T06N-R66W		1.00	1412.73	-8099.02	3195753.51	1414279.17	40°28'06.478"N	104°47'47.123"W
SEC.23-T06N-R66W		1.00	4231.29	-1957.19	3201871.60	1417148.27	40°28'34.342"N	104°46'27.660"W
SEC.26-T06N-R66W		1.00	-4763.04	585.30	3204489.23	1408175.60	40°27'05.465"N	104°45'54.763"W
SEC.27-T06N-R66W		1.00	-4763.04	585.30	3204489.23	1408175.60	40°27'05.465"N	104°45'54.763"W
TROUDT 41C-23-M BHL ON PLAT (1214'FSL & 510'FEL, SEC.23)	15192.09	7135.00	1941.45	8501.99	321248.95	1414945.01	40°28'11.701"N	104°44'12.329"W
TROUDT 41C-23-M TOP OF PROD ON PLAT (1208'FSL & 2524'FEL, SEC.22)	7840.20	7171.00	1961.51	1150.22	3204997.54	1414904.32	40°28'11.914"N	104°45'47.452"W

Hole and Casing Sections

Name	Start MD (ft)	End MD (ft)	Interval (ft)	Start TVD (ft)	End TVD (ft)	Start Local N (ft)	Start Local E (ft)	End Local N (ft)	End Local E (ft)	Wellbore
13.5in Open Hole	25.00	1750.00	1725.00	25.00	1705.77	0.00	0.00	320.98	91.65	TROUDT 41C-23-M PWB
9.625in Casing Surface	25.00	1750.00	1725.00	25.00	1705.77	0.00	0.00	320.98	91.65	TROUDT 41C-23-M PWB
8.5in Open Hole	1750.00	15192.09	13442.09	1705.77	7135.00	320.98	91.65	1941.45	8501.99	TROUDT 41C-23-M PWB

Well Profile Data

Design Comment	MD (ft)	Inc (°)	Az (°)	TVD (ft)	Local N (ft)	Local E (ft)	DLS (°/100ft)	VS (ft)
Tie On	25.00	0.000	15.935	25.00	0.00	0.00	0.00	0.00
End of Tangent	200.00	0.000	15.935	200.00	0.00	0.00	0.00	0.00
End of Build	1067.21	17.344	15.935	1054.03	125.25	35.76	2.00	62.75
End of Tangent	6888.88	17.344	15.935	6610.99	1794.07	512.25	0.00	898.79
End of 3D Arc	7840.20	90.281	90.156	7171.00	1961.51	1150.22	9.00	1558.03
End of Tangent	15192.09	90.281	90.156	7135.00	1941.45	8501.99	0.00	8720.84

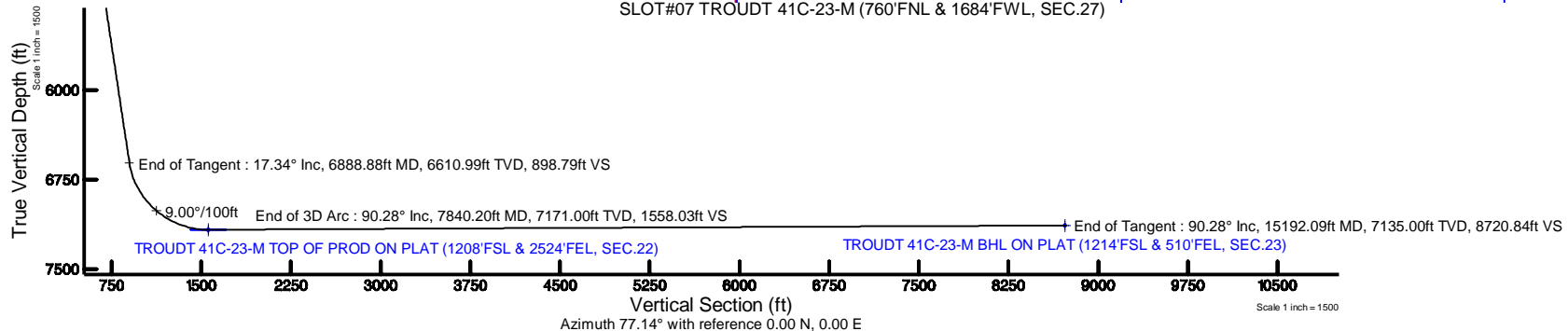
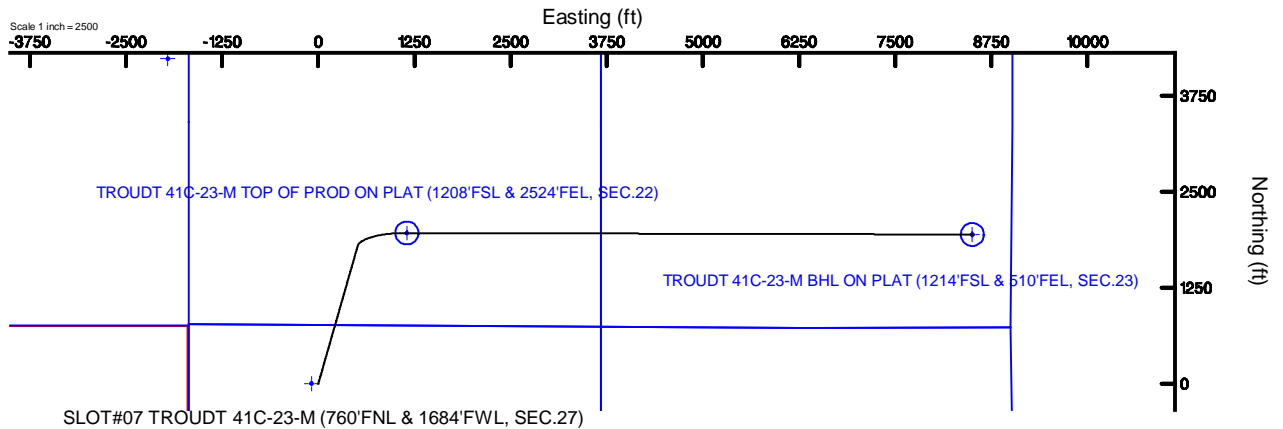


SRC ENERGY



BGGM (1900.0 to 2019.0) Dip: 66.90° Field: 52426.1 nT
 Magnetic North is 8.37 degrees East of True North (at 8/31/2017)

To correct azimuth from Magnetic to True add 8.37 degrees



TROUDT_41C-23-M_PWP__REV-A.0_.las

~VERSION INFORMATION

VERS. 2.0 : CWLS LOG ASCII STANDARD-VERSION 2.0
 WRAP. NO : ASCII DATA SECTION CONTAINS ONE ROW PER WELLPATH STATION

~WELL INFORMATION

#MNEM	.UNITS	DATA	:DESCRIPTION
#----	.-----	----	:-----
STRT	.ft	0.00	:START MD
STOP	.ft	15192.09	:STOP MD
STEP	.ft	0.0	:STEP (non-uniform increment)
NULL	.	-999.99	:NULL
COMP	.	SRC ENERGY	:OPERATOR
WELL	.	TROUDT 41C-23-M	:WELL
FLD	.	WELD COUNTY (NAD83,TRUE NORTH)	:FIELD
LOC	.	COLORADO	:AREA (aka: Location)
CNTY	.	N/A	:COUNTY
STAT	.	N/A	:STATE
CTRY	.	N/A	:COUNTRY
SRVC	.	Baker Hughes	:CONTRACTOR
DATE	.	09/05/2017	:LOG REV DATE
API	.		:API NUMBER

~OTHER INFORMATION

#Software: WellArchitect(R) Version 5.0

#MNEM	.UNITS	DATA	:DESCRIPTION
#----	.-----	----	:-----
WPTYPE	.	PLANNED WELLPATH	:WELLPATH TYPE
FACILITY	.	SEC.27-T06N-R66W	:FACILITY
SLOT	.	SLOT#07 TROUDT 41C-23-M (760'FNL & 1684'FWL, SEC.27)	:SLOT
WELLBORE	.	TROUDT 41C-23-M PWB	:WELLBORE
WELLPATH	.	TROUDT 41C-23-M PWP (REV-A.0)	:WELLPATH
MDREFPT	.	PD 562 (25') (RKB)	:MD REFERENCE POINT
TVDREFPT	.	PD 562 (25') (RKB)	:TVD REFERENCE POINT
LCLREFPT	.	Slot	:LOCAL COORDINATE REFERENCE PT

TROUDT_41C-23-M_PWP__REV-A.0_.las

VSAZIMUTH.deg 77.14 :VERTICAL SECTION AZIMUTH
 VSORIGN .ft 0.00 :VERTICAL SECTION ORIGIN NORTH
 VSORIGE .ft 0.00 :VERTICAL SECTION ORIGIN EAST

~CURVE (WELLPATH) INFORMATION

#MNEM .UNITS :DESCRIPTION
 #----- .----- :-----
 DEPT .ft :MEASURED DEPTH
 INC .deg :INCLINATION
 AZI .deg :AZIMUTH
 TVD .ft :TRUE VERTICAL DEPTH
 SECT .ft :CROSS SECTION (CURTAIN/VERTICAL)
 LOCALN .ft :LOCAL NORTH
 LOCALE .ft :LOCAL EAST
 LAT .deg :LATITUDE
 LONG .deg :LONGITUDE
 DLS .deg/100ft :DOGLEG SEVERITY

~ASCII DATA

0.00	0.00	15.94	0.00	0.00	0.00	0.00	40.4645920	-104.7673150	0.00
25.00	0.00	15.94	25.00	0.00	0.00	0.00	40.4645920	-104.7673150	0.00
125.00	0.00	15.94	125.00	0.00	0.00	0.00	40.4645920	-104.7673150	0.00
200.00	0.00	15.94	200.00	0.00	0.00	0.00	40.4645920	-104.7673150	0.00
225.00	0.50	15.94	225.00	0.05	0.10	0.03	40.4645923	-104.7673149	2.00
325.00	2.50	15.94	324.96	1.31	2.62	0.75	40.4645992	-104.7673123	2.00
425.00	4.50	15.94	424.77	4.25	8.49	2.42	40.4646153	-104.7673063	2.00
525.00	6.50	15.94	524.30	8.87	17.71	5.06	40.4646406	-104.7672968	2.00
625.00	8.50	15.94	623.44	15.16	30.26	8.64	40.4646751	-104.7672840	2.00
725.00	10.50	15.94	722.07	23.11	46.13	13.17	40.4647186	-104.7672677	2.00
825.00	12.50	15.94	820.05	32.71	65.30	18.64	40.4647712	-104.7672480	2.00
925.00	14.50	15.94	917.29	43.96	87.74	25.05	40.4648328	-104.7672250	2.00
1025.00	16.50	15.94	1013.64	56.83	113.44	32.39	40.4649034	-104.7671986	2.00
1067.21	17.34	15.94	1054.03	62.75	125.25	35.76	40.4649358	-104.7671865	2.00
1125.00	17.34	15.94	1109.19	71.05	141.82	40.49	40.4649813	-104.7671695	0.00

TROUDT_41C-23-M_PWP__REV-A.0_.las

1225.00	17.34	15.94	1204.64	85.41	170.48	48.68	40.4650600	-104.7671401	0.00
1325.00	17.34	15.94	1300.09	99.77	199.15	56.86	40.4651386	-104.7671106	0.00
1425.00	17.34	15.94	1395.55	114.13	227.82	65.05	40.4652173	-104.7670812	0.00
1525.00	17.34	15.94	1491.00	128.49	256.48	73.23	40.4652960	-104.7670518	0.00
1625.00	17.34	15.94	1586.45	142.85	285.15	81.42	40.4653747	-104.7670224	0.00
1725.00	17.34	15.94	1681.91	157.21	313.81	89.60	40.4654534	-104.7669930	0.00
1825.00	17.34	15.94	1777.36	171.57	342.48	97.79	40.4655321	-104.7669636	0.00
1925.00	17.34	15.94	1872.81	185.94	371.14	105.97	40.4656107	-104.7669342	0.00
2025.00	17.34	15.94	1968.27	200.30	399.81	114.15	40.4656894	-104.7669047	0.00
2125.00	17.34	15.94	2063.72	214.66	428.48	122.34	40.4657681	-104.7668753	0.00
2225.00	17.34	15.94	2159.17	229.02	457.14	130.52	40.4658468	-104.7668459	0.00
2325.00	17.34	15.94	2254.63	243.38	485.81	138.71	40.4659255	-104.7668165	0.00
2425.00	17.34	15.94	2350.08	257.74	514.47	146.89	40.4660042	-104.7667871	0.00
2525.00	17.34	15.94	2445.53	272.10	543.14	155.08	40.4660828	-104.7667577	0.00
2625.00	17.34	15.94	2540.98	286.46	571.80	163.26	40.4661615	-104.7667282	0.00
2725.00	17.34	15.94	2636.44	300.82	600.47	171.45	40.4662402	-104.7666988	0.00
2825.00	17.34	15.94	2731.89	315.18	629.13	179.63	40.4663189	-104.7666694	0.00
2925.00	17.34	15.94	2827.34	329.54	657.80	187.82	40.4663976	-104.7666400	0.00
3025.00	17.34	15.94	2922.80	343.91	686.47	196.00	40.4664763	-104.7666106	0.00
3125.00	17.34	15.94	3018.25	358.27	715.13	204.19	40.4665549	-104.7665812	0.00
3225.00	17.34	15.94	3113.70	372.63	743.80	212.37	40.4666336	-104.7665518	0.00
3325.00	17.34	15.94	3209.16	386.99	772.46	220.56	40.4667123	-104.7665223	0.00
3425.00	17.34	15.94	3304.61	401.35	801.13	228.74	40.4667910	-104.7664929	0.00
3525.00	17.34	15.94	3400.06	415.71	829.79	236.93	40.4668697	-104.7664635	0.00
3625.00	17.34	15.94	3495.52	430.07	858.46	245.11	40.4669484	-104.7664341	0.00
3725.00	17.34	15.94	3590.97	444.43	887.13	253.29	40.4670270	-104.7664047	0.00
3825.00	17.34	15.94	3686.42	458.79	915.79	261.48	40.4671057	-104.7663753	0.00
3925.00	17.34	15.94	3781.88	473.15	944.46	269.66	40.4671844	-104.7663458	0.00
4025.00	17.34	15.94	3877.33	487.51	973.12	277.85	40.4672631	-104.7663164	0.00
4125.00	17.34	15.94	3972.78	501.88	1001.79	286.03	40.4673418	-104.7662870	0.00
4225.00	17.34	15.94	4068.23	516.24	1030.45	294.22	40.4674205	-104.7662576	0.00
4325.00	17.34	15.94	4163.69	530.60	1059.12	302.40	40.4674991	-104.7662282	0.00
4425.00	17.34	15.94	4259.14	544.96	1087.78	310.59	40.4675778	-104.7661988	0.00
4525.00	17.34	15.94	4354.59	559.32	1116.45	318.77	40.4676565	-104.7661693	0.00

TROUDT_41C-23-M_PWP__REV-A.0_.las

4625.00	17.34	15.94	4450.05	573.68	1145.12	326.96	40.4677352	-104.7661399	0.00
4725.00	17.34	15.94	4545.50	588.04	1173.78	335.14	40.4678139	-104.7661105	0.00
4825.00	17.34	15.94	4640.95	602.40	1202.45	343.33	40.4678926	-104.7660811	0.00
4925.00	17.34	15.94	4736.41	616.76	1231.11	351.51	40.4679712	-104.7660517	0.00
5025.00	17.34	15.94	4831.86	631.12	1259.78	359.70	40.4680499	-104.7660223	0.00
5125.00	17.34	15.94	4927.31	645.48	1288.44	367.88	40.4681286	-104.7659928	0.00
5225.00	17.34	15.94	5022.77	659.85	1317.11	376.07	40.4682073	-104.7659634	0.00
5325.00	17.34	15.94	5118.22	674.21	1345.78	384.25	40.4682860	-104.7659340	0.00
5425.00	17.34	15.94	5213.67	688.57	1374.44	392.43	40.4683646	-104.7659046	0.00
5525.00	17.34	15.94	5309.12	702.93	1403.11	400.62	40.4684433	-104.7658752	0.00
5625.00	17.34	15.94	5404.58	717.29	1431.77	408.80	40.4685220	-104.7658457	0.00
5725.00	17.34	15.94	5500.03	731.65	1460.44	416.99	40.4686007	-104.7658163	0.00
5825.00	17.34	15.94	5595.48	746.01	1489.10	425.17	40.4686794	-104.7657869	0.00
5925.00	17.34	15.94	5690.94	760.37	1517.77	433.36	40.4687581	-104.7657575	0.00
6025.00	17.34	15.94	5786.39	774.73	1546.43	441.54	40.4688367	-104.7657281	0.00
6125.00	17.34	15.94	5881.84	789.09	1575.10	449.73	40.4689154	-104.7656987	0.00
6225.00	17.34	15.94	5977.30	803.45	1603.77	457.91	40.4689941	-104.7656692	0.00
6325.00	17.34	15.94	6072.75	817.82	1632.43	466.10	40.4690728	-104.7656398	0.00
6425.00	17.34	15.94	6168.20	832.18	1661.10	474.28	40.4691515	-104.7656104	0.00
6525.00	17.34	15.94	6263.66	846.54	1689.76	482.47	40.4692302	-104.7655810	0.00
6625.00	17.34	15.94	6359.11	860.90	1718.43	490.65	40.4693088	-104.7655516	0.00
6725.00	17.34	15.94	6454.56	875.26	1747.09	498.84	40.4693875	-104.7655221	0.00
6825.00	17.34	15.94	6550.01	889.62	1775.76	507.02	40.4694662	-104.7654927	0.00
6888.88	17.34	15.94	6610.99	898.79	1794.07	512.25	40.4695165	-104.7654739	0.00
6925.00	18.46	25.89	6645.37	904.97	1804.39	516.22	40.4695448	-104.7654596	9.00
7025.00	23.62	46.68	6738.80	932.20	1832.44	537.75	40.4696218	-104.7653823	9.00
7125.00	30.53	59.45	6827.86	973.75	1859.15	574.28	40.4696951	-104.7652510	9.00
7225.00	38.26	67.68	6910.36	1028.61	1883.87	624.90	40.4697629	-104.7650691	9.00
7325.00	46.39	73.44	6984.27	1095.41	1905.99	688.37	40.4698237	-104.7648409	9.00
7425.00	54.73	77.81	7047.75	1172.51	1924.97	763.12	40.4698757	-104.7645723	9.00
7525.00	63.21	81.35	7099.27	1258.02	1940.34	847.32	40.4699179	-104.7642696	9.00
7625.00	71.76	84.39	7137.53	1349.83	1951.72	938.90	40.4699492	-104.7639405	9.00
7725.00	80.36	87.15	7161.61	1445.68	1958.83	1035.59	40.4699687	-104.7635930	9.00
7825.00	88.97	89.76	7170.90	1543.21	1961.50	1135.02	40.4699760	-104.7632356	9.00

TROUDT_41C-23-M_PWP__REV-A.0_.las

7840.20	90.28	90.16	7171.00	1558.03	1961.51	1150.22	40.4699760	-104.7631810	9.00
7925.00	90.28	90.16	7170.58	1640.65	1961.28	1235.02	40.4699754	-104.7628762	0.00
8025.00	90.28	90.16	7170.10	1738.07	1961.00	1335.01	40.4699746	-104.7625168	0.00
8125.00	90.28	90.16	7169.61	1835.50	1960.73	1435.01	40.4699738	-104.7621574	0.00
8225.00	90.28	90.16	7169.12	1932.93	1960.46	1535.01	40.4699731	-104.7617980	0.00
8325.00	90.28	90.16	7168.63	2030.36	1960.18	1635.01	40.4699723	-104.7614386	0.00
8425.00	90.28	90.16	7168.14	2127.79	1959.91	1735.01	40.4699715	-104.7610792	0.00
8525.00	90.28	90.16	7167.65	2225.21	1959.64	1835.01	40.4699708	-104.7607198	0.00
8625.00	90.28	90.16	7167.16	2322.64	1959.37	1935.00	40.4699700	-104.7603604	0.00
8725.00	90.28	90.16	7166.67	2420.07	1959.09	2035.00	40.4699692	-104.7600010	0.00
8825.00	90.28	90.16	7166.18	2517.50	1958.82	2135.00	40.4699684	-104.7596416	0.00
8925.00	90.28	90.16	7165.69	2614.93	1958.55	2235.00	40.4699677	-104.7592822	0.00
9025.00	90.28	90.16	7165.20	2712.36	1958.27	2335.00	40.4699669	-104.7589228	0.00
9125.00	90.28	90.16	7164.71	2809.78	1958.00	2435.00	40.4699661	-104.7585634	0.00
9225.00	90.28	90.16	7164.22	2907.21	1957.73	2534.99	40.4699653	-104.7582040	0.00
9325.00	90.28	90.16	7163.73	3004.64	1957.46	2634.99	40.4699646	-104.7578446	0.00
9425.00	90.28	90.16	7163.24	3102.07	1957.18	2734.99	40.4699638	-104.7574852	0.00
9525.00	90.28	90.16	7162.75	3199.50	1956.91	2834.99	40.4699630	-104.7571258	0.00
9625.00	90.28	90.16	7162.26	3296.92	1956.64	2934.99	40.4699622	-104.7567663	0.00
9725.00	90.28	90.16	7161.77	3394.35	1956.36	3034.99	40.4699614	-104.7564069	0.00
9825.00	90.28	90.16	7161.28	3491.78	1956.09	3134.99	40.4699607	-104.7560475	0.00
9925.00	90.28	90.16	7160.79	3589.21	1955.82	3234.98	40.4699599	-104.7556881	0.00
10025.00	90.28	90.16	7160.30	3686.64	1955.55	3334.98	40.4699591	-104.7553287	0.00
10125.00	90.28	90.16	7159.81	3784.07	1955.27	3434.98	40.4699583	-104.7549693	0.00
10225.00	90.28	90.16	7159.32	3881.49	1955.00	3534.98	40.4699575	-104.7546099	0.00
10325.00	90.28	90.16	7158.83	3978.92	1954.73	3634.98	40.4699567	-104.7542505	0.00
10425.00	90.28	90.16	7158.34	4076.35	1954.45	3734.98	40.4699559	-104.7538911	0.00
10525.00	90.28	90.16	7157.85	4173.78	1954.18	3834.97	40.4699552	-104.7535317	0.00
10625.00	90.28	90.16	7157.36	4271.21	1953.91	3934.97	40.4699544	-104.7531723	0.00
10725.00	90.28	90.16	7156.87	4368.64	1953.64	4034.97	40.4699536	-104.7528129	0.00
10825.00	90.28	90.16	7156.38	4466.06	1953.36	4134.97	40.4699528	-104.7524535	0.00
10925.00	90.28	90.16	7155.89	4563.49	1953.09	4234.97	40.4699520	-104.7520941	0.00
11025.00	90.28	90.16	7155.40	4660.92	1952.82	4334.97	40.4699512	-104.7517347	0.00
11125.00	90.28	90.16	7154.92	4758.35	1952.55	4434.96	40.4699504	-104.7513753	0.00

TROUDT_41C-23-M_PWP__REV-A.0_.las

11225.00	90.28	90.16	7154.43	4855.78	1952.27	4534.96	40.4699496	-104.7510159	0.00
11325.00	90.28	90.16	7153.94	4953.20	1952.00	4634.96	40.4699488	-104.7506565	0.00
11425.00	90.28	90.16	7153.45	5050.63	1951.73	4734.96	40.4699480	-104.7502971	0.00
11525.00	90.28	90.16	7152.96	5148.06	1951.45	4834.96	40.4699472	-104.7499377	0.00
11625.00	90.28	90.16	7152.47	5245.49	1951.18	4934.96	40.4699464	-104.7495783	0.00
11725.00	90.28	90.16	7151.98	5342.92	1950.91	5034.96	40.4699456	-104.7492189	0.00
11825.00	90.28	90.16	7151.49	5440.35	1950.64	5134.95	40.4699448	-104.7488595	0.00
11925.00	90.28	90.16	7151.00	5537.77	1950.36	5234.95	40.4699440	-104.7485000	0.00
12025.00	90.28	90.16	7150.51	5635.20	1950.09	5334.95	40.4699432	-104.7481406	0.00
12125.00	90.28	90.16	7150.02	5732.63	1949.82	5434.95	40.4699423	-104.7477812	0.00
12225.00	90.28	90.16	7149.53	5830.06	1949.54	5534.95	40.4699415	-104.7474218	0.00
12325.00	90.28	90.16	7149.04	5927.49	1949.27	5634.95	40.4699407	-104.7470624	0.00
12425.00	90.28	90.16	7148.55	6024.92	1949.00	5734.94	40.4699399	-104.7467030	0.00
12525.00	90.28	90.16	7148.06	6122.34	1948.73	5834.94	40.4699391	-104.7463436	0.00
12625.00	90.28	90.16	7147.57	6219.77	1948.45	5934.94	40.4699383	-104.7459842	0.00
12725.00	90.28	90.16	7147.08	6317.20	1948.18	6034.94	40.4699375	-104.7456248	0.00
12825.00	90.28	90.16	7146.59	6414.63	1947.91	6134.94	40.4699367	-104.7452654	0.00
12925.00	90.28	90.16	7146.10	6512.06	1947.63	6234.94	40.4699358	-104.7449060	0.00
13025.00	90.28	90.16	7145.61	6609.48	1947.36	6334.94	40.4699350	-104.7445466	0.00
13125.00	90.28	90.16	7145.12	6706.91	1947.09	6434.93	40.4699342	-104.7441872	0.00
13225.00	90.28	90.16	7144.63	6804.34	1946.82	6534.93	40.4699334	-104.7438278	0.00
13325.00	90.28	90.16	7144.14	6901.77	1946.54	6634.93	40.4699326	-104.7434684	0.00
13425.00	90.28	90.16	7143.65	6999.20	1946.27	6734.93	40.4699317	-104.7431090	0.00
13525.00	90.28	90.16	7143.16	7096.63	1946.00	6834.93	40.4699309	-104.7427496	0.00
13625.00	90.28	90.16	7142.67	7194.05	1945.72	6934.93	40.4699301	-104.7423902	0.00
13725.00	90.28	90.16	7142.18	7291.48	1945.45	7034.92	40.4699293	-104.7420308	0.00
13825.00	90.28	90.16	7141.69	7388.91	1945.18	7134.92	40.4699284	-104.7416714	0.00
13925.00	90.28	90.16	7141.20	7486.34	1944.91	7234.92	40.4699276	-104.7413120	0.00
14025.00	90.28	90.16	7140.71	7583.77	1944.63	7334.92	40.4699268	-104.7409526	0.00
14125.00	90.28	90.16	7140.23	7681.19	1944.36	7434.92	40.4699259	-104.7405932	0.00
14225.00	90.28	90.16	7139.74	7778.62	1944.09	7534.92	40.4699251	-104.7402338	0.00
14325.00	90.28	90.16	7139.25	7876.05	1943.82	7634.91	40.4699243	-104.7398743	0.00
14425.00	90.28	90.16	7138.76	7973.48	1943.54	7734.91	40.4699234	-104.7395149	0.00
14525.00	90.28	90.16	7138.27	8070.91	1943.27	7834.91	40.4699226	-104.7391555	0.00

TROUDT_41C-23-M_PWP__REV-A.0_.las

14625.00	90.28	90.16	7137.78	8168.34	1943.00	7934.91	40.4699218	-104.7387961	0.00
14725.00	90.28	90.16	7137.29	8265.76	1942.72	8034.91	40.4699209	-104.7384367	0.00
14825.00	90.28	90.16	7136.80	8363.19	1942.45	8134.91	40.4699201	-104.7380773	0.00
14925.00	90.28	90.16	7136.31	8460.62	1942.18	8234.91	40.4699192	-104.7377179	0.00
15025.00	90.28	90.16	7135.82	8558.05	1941.91	8334.90	40.4699184	-104.7373585	0.00
15125.00	90.28	90.16	7135.33	8655.48	1941.63	8434.90	40.4699176	-104.7369991	0.00
15192.09	90.28	90.16	7135.00	8720.84	1941.45	8501.99	40.4699170	-104.7367580	0.00



Planned Wellpath Report

TROUDT 41C-23-M PWP (REV-A.0)

Page 1 of 8



REFERENCE WELLPATH IDENTIFICATION			
Operator	SRC ENERGY	Slot	SLOT#07 TROUDT 41C-23-M (760'FNL & 1684'FWL, SEC.27)
Area	COLORADO	Well	TROUDT 41C-23-M
Field	WELD COUNTY (NAD83, TRUE NORTH)	Wellbore	TROUDT 41C-23-M PWB
Facility	SEC.27-T06N-R66W		

REPORT SETUP INFORMATION			
Projection System	NAD83 / Lambert Colorado SP, Northern Zone (501), US feet	Software System	WellArchitect® 5.0
North Reference	True	User	Doddanna
Scale	0.999964	Report Generated	9/18/2017 at 1:05:52 PM
Convergence at slot	0.47° East	Database/Source file	WellArchitectDB/TROUDT_41C-23-M_PWP_REV-A.0_.xml

WELLPATH LOCATION						
	Local coordinates		Grid coordinates		Geographic coordinates	
	North[ft]	East[ft]	Easting[US ft]	Northing[US ft]	Latitude	Longitude
Slot Location	0.00	89.88	3203863.61	1412933.45	40°27'52.531"N	104°46'02.334"W
Facility Reference Pt			3203773.74	1412932.71	40°27'52.531"N	104°46'03.497"W
Field Reference Pt			3171284.48	1426358.81	40°30'07.643"N	104°53'02.634"W

WELLPATH DATUM			
Calculation method	Minimum curvature	PD 562 (25') (RKB) to Facility Vertical Datum	4744.00ft
Horizontal Reference Pt	Slot	PD 562 (25') (RKB) to Mean Sea Level	4744.00ft
Vertical Reference Pt	PD 562 (25') (RKB)	PD 562 (25') (RKB) to Mud Line at Slot (SLOT#07 TROUDT 41C-23-M (760'FNL & 1684'FWL, SEC.27))	4744.00ft
MD Reference Pt	PD 562 (25') (RKB)	Section Origin	N 0.00, E 0.00 ft
Field Vertical Reference	Mean Sea Level	Section Azimuth	77.14°



Planned Wellpath Report

TROUDT 41C-23-M PWP (REV-A.0)

Page 2 of 8



REFERENCE WELLPATH IDENTIFICATION

Operator	SRC ENERGY	Slot	SLOT#07 TROUDT 41C-23-M (760'FNL & 1684'FWL, SEC.27)
Area	COLORADO	Well	TROUDT 41C-23-M
Field	WELD COUNTY (NAD83, TRUE NORTH)	Wellbore	TROUDT 41C-23-M PWB
Facility	SEC.27-T06N-R66W		

WELLPATH DATA (158 stations) † = interpolated/extrapolated station

MD [ft]	Inclination [°]	Azimuth [°]	TVD [ft]	Vert Sect [ft]	North [ft]	East [ft]	DLS [°/100ft]	Comments
0.00†	0.000	15.935	0.00	0.00	0.00	0.00	0.00	
25.00	0.000	15.935	25.00	0.00	0.00	0.00	0.00	Tie On
125.00†	0.000	15.935	125.00	0.00	0.00	0.00	0.00	
200.00	0.000	15.935	200.00	0.00	0.00	0.00	0.00	End of Tangent
225.00†	0.500	15.935	225.00	0.05	0.10	0.03	2.00	
325.00†	2.500	15.935	324.96	1.31	2.62	0.75	2.00	
425.00†	4.500	15.935	424.77	4.25	8.49	2.42	2.00	
525.00†	6.500	15.935	524.30	8.87	17.71	5.06	2.00	
625.00†	8.500	15.935	623.44	15.16	30.26	8.64	2.00	
725.00†	10.500	15.935	722.07	23.11	46.13	13.17	2.00	
825.00†	12.500	15.935	820.05	32.71	65.30	18.64	2.00	
925.00†	14.500	15.935	917.29	43.96	87.74	25.05	2.00	
1025.00†	16.500	15.935	1013.64	56.83	113.44	32.39	2.00	
1067.21	17.344	15.935	1054.03	62.75	125.25	35.76	2.00	End of Build
1125.00†	17.344	15.935	1109.19	71.05	141.82	40.49	0.00	
1225.00†	17.344	15.935	1204.64	85.41	170.48	48.68	0.00	
1325.00†	17.344	15.935	1300.09	99.77	199.15	56.86	0.00	
1425.00†	17.344	15.935	1395.55	114.13	227.82	65.05	0.00	
1525.00†	17.344	15.935	1491.00	128.49	256.48	73.23	0.00	
1625.00†	17.344	15.935	1586.45	142.85	285.15	81.42	0.00	
1725.00†	17.344	15.935	1681.91	157.21	313.81	89.60	0.00	
1825.00†	17.344	15.935	1777.36	171.57	342.48	97.79	0.00	
1925.00†	17.344	15.935	1872.81	185.94	371.14	105.97	0.00	
2025.00†	17.344	15.935	1968.27	200.30	399.81	114.15	0.00	
2125.00†	17.344	15.935	2063.72	214.66	428.48	122.34	0.00	
2225.00†	17.344	15.935	2159.17	229.02	457.14	130.52	0.00	
2325.00†	17.344	15.935	2254.63	243.38	485.81	138.71	0.00	
2425.00†	17.344	15.935	2350.08	257.74	514.47	146.89	0.00	
2525.00†	17.344	15.935	2445.53	272.10	543.14	155.08	0.00	
2625.00†	17.344	15.935	2540.98	286.46	571.80	163.26	0.00	



Planned Wellpath Report

TROUDT 41C-23-M PWP (REV-A.0)

Page 3 of 8



REFERENCE WELLPATH IDENTIFICATION			
Operator	SRC ENERGY	Slot	SLOT#07 TROUDT 41C-23-M (760'FNL & 1684'FWL, SEC.27)
Area	COLORADO	Well	TROUDT 41C-23-M
Field	WELD COUNTY (NAD83, TRUE NORTH)	Wellbore	TROUDT 41C-23-M PWB
Facility	SEC.27-T06N-R66W		

WELLPATH DATA (158 stations) † = interpolated/extrapolated station								
MD [ft]	Inclination [°]	Azimuth [°]	TVD [ft]	Vert Sect [ft]	North [ft]	East [ft]	DLS [°/100ft]	Comments
2725.00†	17.344	15.935	2636.44	300.82	600.47	171.45	0.00	
2825.00†	17.344	15.935	2731.89	315.18	629.13	179.63	0.00	
2925.00†	17.344	15.935	2827.34	329.54	657.80	187.82	0.00	
3025.00†	17.344	15.935	2922.80	343.91	686.47	196.00	0.00	
3125.00†	17.344	15.935	3018.25	358.27	715.13	204.19	0.00	
3225.00†	17.344	15.935	3113.70	372.63	743.80	212.37	0.00	
3325.00†	17.344	15.935	3209.16	386.99	772.46	220.56	0.00	
3425.00†	17.344	15.935	3304.61	401.35	801.13	228.74	0.00	
3525.00†	17.344	15.935	3400.06	415.71	829.79	236.93	0.00	
3625.00†	17.344	15.935	3495.52	430.07	858.46	245.11	0.00	
3725.00†	17.344	15.935	3590.97	444.43	887.13	253.29	0.00	
3825.00†	17.344	15.935	3686.42	458.79	915.79	261.48	0.00	
3925.00†	17.344	15.935	3781.88	473.15	944.46	269.66	0.00	
4025.00†	17.344	15.935	3877.33	487.51	973.12	277.85	0.00	
4125.00†	17.344	15.935	3972.78	501.88	1001.79	286.03	0.00	
4225.00†	17.344	15.935	4068.23	516.24	1030.45	294.22	0.00	
4325.00†	17.344	15.935	4163.69	530.60	1059.12	302.40	0.00	
4425.00†	17.344	15.935	4259.14	544.96	1087.78	310.59	0.00	
4525.00†	17.344	15.935	4354.59	559.32	1116.45	318.77	0.00	
4625.00†	17.344	15.935	4450.05	573.68	1145.12	326.96	0.00	
4725.00†	17.344	15.935	4545.50	588.04	1173.78	335.14	0.00	
4825.00†	17.344	15.935	4640.95	602.40	1202.45	343.33	0.00	
4925.00†	17.344	15.935	4736.41	616.76	1231.11	351.51	0.00	
5025.00†	17.344	15.935	4831.86	631.12	1259.78	359.70	0.00	
5125.00†	17.344	15.935	4927.31	645.48	1288.44	367.88	0.00	
5225.00†	17.344	15.935	5022.77	659.85	1317.11	376.07	0.00	
5325.00†	17.344	15.935	5118.22	674.21	1345.78	384.25	0.00	
5425.00†	17.344	15.935	5213.67	688.57	1374.44	392.43	0.00	
5525.00†	17.344	15.935	5309.12	702.93	1403.11	400.62	0.00	
5625.00†	17.344	15.935	5404.58	717.29	1431.77	408.80	0.00	



Planned Wellpath Report

TROUDT 41C-23-M PWP (REV-A.0)

Page 4 of 8



REFERENCE WELLPATH IDENTIFICATION			
Operator	SRC ENERGY	Slot	SLOT#07 TROUDT 41C-23-M (760'FNL & 1684'FWL, SEC.27)
Area	COLORADO	Well	TROUDT 41C-23-M
Field	WELD COUNTY (NAD83, TRUE NORTH)	Wellbore	TROUDT 41C-23-M PWB
Facility	SEC.27-T06N-R66W		

WELLPATH DATA (158 stations) † = interpolated/extrapolated station								
MD [ft]	Inclination [°]	Azimuth [°]	TVD [ft]	Vert Sect [ft]	North [ft]	East [ft]	DLS [°/100ft]	Comments
5725.00†	17.344	15.935	5500.03	731.65	1460.44	416.99	0.00	
5825.00†	17.344	15.935	5595.48	746.01	1489.10	425.17	0.00	
5925.00†	17.344	15.935	5690.94	760.37	1517.77	433.36	0.00	
6025.00†	17.344	15.935	5786.39	774.73	1546.43	441.54	0.00	
6125.00†	17.344	15.935	5881.84	789.09	1575.10	449.73	0.00	
6225.00†	17.344	15.935	5977.30	803.45	1603.77	457.91	0.00	
6325.00†	17.344	15.935	6072.75	817.82	1632.43	466.10	0.00	
6425.00†	17.344	15.935	6168.20	832.18	1661.10	474.28	0.00	
6525.00†	17.344	15.935	6263.66	846.54	1689.76	482.47	0.00	
6625.00†	17.344	15.935	6359.11	860.90	1718.43	490.65	0.00	
6725.00†	17.344	15.935	6454.56	875.26	1747.09	498.84	0.00	
6825.00†	17.344	15.935	6550.01	889.62	1775.76	507.02	0.00	
6888.88	17.344	15.935	6610.99	898.79	1794.07	512.25	0.00	End of Tangent
6925.00†	18.456	25.891	6645.37	904.97	1804.39	516.22	9.00	
7025.00†	23.618	46.676	6738.80	932.20	1832.44	537.75	9.00	
7125.00†	30.533	59.452	6827.86	973.75	1859.15	574.28	9.00	
7225.00†	38.258	67.678	6910.36	1028.61	1883.87	624.90	9.00	
7325.00†	46.386	73.440	6984.27	1095.41	1905.99	688.37	9.00	
7425.00†	54.734	77.807	7047.75	1172.51	1924.97	763.12	9.00	
7525.00†	63.210	81.347	7099.27	1258.02	1940.34	847.32	9.00	
7625.00†	71.761	84.390	7137.53	1349.83	1951.72	938.90	9.00	
7725.00†	80.355	87.146	7161.61	1445.68	1958.83	1035.59	9.00	
7825.00†	88.970	89.763	7170.90	1543.21	1961.50	1135.02	9.00	
7840.20	90.281	90.156	7171.00 [†]	1558.03	1961.51	1150.22	9.00	End of 3D Arc
7925.00†	90.281	90.156	7170.58	1640.65	1961.28	1235.02	0.00	
8025.00†	90.281	90.156	7170.10	1738.07	1961.00	1335.01	0.00	
8125.00†	90.281	90.156	7169.61	1835.50	1960.73	1435.01	0.00	
8225.00†	90.281	90.156	7169.12	1932.93	1960.46	1535.01	0.00	
8325.00†	90.281	90.156	7168.63	2030.36	1960.18	1635.01	0.00	
8425.00†	90.281	90.156	7168.14	2127.79	1959.91	1735.01	0.00	



Planned Wellpath Report

TROUDT 41C-23-M PWP (REV-A.0)

Page 5 of 8



REFERENCE WELLPATH IDENTIFICATION			
Operator	SRC ENERGY	Slot	SLOT#07 TROUDT 41C-23-M (760'FNL & 1684'FWL, SEC.27)
Area	COLORADO	Well	TROUDT 41C-23-M
Field	WELD COUNTY (NAD83, TRUE NORTH)	Wellbore	TROUDT 41C-23-M PWB
Facility	SEC.27-T06N-R66W		

WELLPATH DATA (158 stations) † = interpolated/extrapolated station								
MD [ft]	Inclination [°]	Azimuth [°]	TVD [ft]	Vert Sect [ft]	North [ft]	East [ft]	DLS [°/100ft]	Comments
8525.00†	90.281	90.156	7167.65	2225.21	1959.64	1835.01	0.00	
8625.00†	90.281	90.156	7167.16	2322.64	1959.37	1935.00	0.00	
8725.00†	90.281	90.156	7166.67	2420.07	1959.09	2035.00	0.00	
8825.00†	90.281	90.156	7166.18	2517.50	1958.82	2135.00	0.00	
8925.00†	90.281	90.156	7165.69	2614.93	1958.55	2235.00	0.00	
9025.00†	90.281	90.156	7165.20	2712.36	1958.27	2335.00	0.00	
9125.00†	90.281	90.156	7164.71	2809.78	1958.00	2435.00	0.00	
9225.00†	90.281	90.156	7164.22	2907.21	1957.73	2534.99	0.00	
9325.00†	90.281	90.156	7163.73	3004.64	1957.46	2634.99	0.00	
9425.00†	90.281	90.156	7163.24	3102.07	1957.18	2734.99	0.00	
9525.00†	90.281	90.156	7162.75	3199.50	1956.91	2834.99	0.00	
9625.00†	90.281	90.156	7162.26	3296.92	1956.64	2934.99	0.00	
9725.00†	90.281	90.156	7161.77	3394.35	1956.36	3034.99	0.00	
9825.00†	90.281	90.156	7161.28	3491.78	1956.09	3134.99	0.00	
9925.00†	90.281	90.156	7160.79	3589.21	1955.82	3234.98	0.00	
10025.00†	90.281	90.156	7160.30	3686.64	1955.55	3334.98	0.00	
10125.00†	90.281	90.156	7159.81	3784.07	1955.27	3434.98	0.00	
10225.00†	90.281	90.156	7159.32	3881.49	1955.00	3534.98	0.00	
10325.00†	90.281	90.156	7158.83	3978.92	1954.73	3634.98	0.00	
10425.00†	90.281	90.156	7158.34	4076.35	1954.45	3734.98	0.00	
10525.00†	90.281	90.156	7157.85	4173.78	1954.18	3834.97	0.00	
10625.00†	90.281	90.156	7157.36	4271.21	1953.91	3934.97	0.00	
10725.00†	90.281	90.156	7156.87	4368.64	1953.64	4034.97	0.00	
10825.00†	90.281	90.156	7156.38	4466.06	1953.36	4134.97	0.00	
10925.00†	90.281	90.156	7155.89	4563.49	1953.09	4234.97	0.00	
11025.00†	90.281	90.156	7155.40	4660.92	1952.82	4334.97	0.00	
11125.00†	90.281	90.156	7154.92	4758.35	1952.55	4434.96	0.00	
11225.00†	90.281	90.156	7154.43	4855.78	1952.27	4534.96	0.00	
11325.00†	90.281	90.156	7153.94	4953.20	1952.00	4634.96	0.00	
11425.00†	90.281	90.156	7153.45	5050.63	1951.73	4734.96	0.00	



Planned Wellpath Report

TROUDT 41C-23-M PWP (REV-A.0)

Page 6 of 8



REFERENCE WELLPATH IDENTIFICATION			
Operator	SRC ENERGY	Slot	SLOT#07 TROUDT 41C-23-M (760'FNL & 1684'FWL, SEC.27)
Area	COLORADO	Well	TROUDT 41C-23-M
Field	WELD COUNTY (NAD83, TRUE NORTH)	Wellbore	TROUDT 41C-23-M PWB
Facility	SEC.27-T06N-R66W		

WELLPATH DATA (158 stations) † = interpolated/extrapolated station								
MD [ft]	Inclination [°]	Azimuth [°]	TVD [ft]	Vert Sect [ft]	North [ft]	East [ft]	DLS [°/100ft]	Comments
11525.00†	90.281	90.156	7152.96	5148.06	1951.45	4834.96	0.00	
11625.00†	90.281	90.156	7152.47	5245.49	1951.18	4934.96	0.00	
11725.00†	90.281	90.156	7151.98	5342.92	1950.91	5034.96	0.00	
11825.00†	90.281	90.156	7151.49	5440.35	1950.64	5134.95	0.00	
11925.00†	90.281	90.156	7151.00	5537.77	1950.36	5234.95	0.00	
12025.00†	90.281	90.156	7150.51	5635.20	1950.09	5334.95	0.00	
12125.00†	90.281	90.156	7150.02	5732.63	1949.82	5434.95	0.00	
12225.00†	90.281	90.156	7149.53	5830.06	1949.54	5534.95	0.00	
12325.00†	90.281	90.156	7149.04	5927.49	1949.27	5634.95	0.00	
12425.00†	90.281	90.156	7148.55	6024.92	1949.00	5734.94	0.00	
12525.00†	90.281	90.156	7148.06	6122.34	1948.73	5834.94	0.00	
12625.00†	90.281	90.156	7147.57	6219.77	1948.45	5934.94	0.00	
12725.00†	90.281	90.156	7147.08	6317.20	1948.18	6034.94	0.00	
12825.00†	90.281	90.156	7146.59	6414.63	1947.91	6134.94	0.00	
12925.00†	90.281	90.156	7146.10	6512.06	1947.63	6234.94	0.00	
13025.00†	90.281	90.156	7145.61	6609.48	1947.36	6334.94	0.00	
13125.00†	90.281	90.156	7145.12	6706.91	1947.09	6434.93	0.00	
13225.00†	90.281	90.156	7144.63	6804.34	1946.82	6534.93	0.00	
13325.00†	90.281	90.156	7144.14	6901.77	1946.54	6634.93	0.00	
13425.00†	90.281	90.156	7143.65	6999.20	1946.27	6734.93	0.00	
13525.00†	90.281	90.156	7143.16	7096.63	1946.00	6834.93	0.00	
13625.00†	90.281	90.156	7142.67	7194.05	1945.72	6934.93	0.00	
13725.00†	90.281	90.156	7142.18	7291.48	1945.45	7034.92	0.00	
13825.00†	90.281	90.156	7141.69	7388.91	1945.18	7134.92	0.00	
13925.00†	90.281	90.156	7141.20	7486.34	1944.91	7234.92	0.00	
14025.00†	90.281	90.156	7140.71	7583.77	1944.63	7334.92	0.00	
14125.00†	90.281	90.156	7140.23	7681.19	1944.36	7434.92	0.00	
14225.00†	90.281	90.156	7139.74	7778.62	1944.09	7534.92	0.00	
14325.00†	90.281	90.156	7139.25	7876.05	1943.82	7634.91	0.00	
14425.00†	90.281	90.156	7138.76	7973.48	1943.54	7734.91	0.00	



Planned Wellpath Report

TROUDT 41C-23-M PWP (REV-A.0)

Page 7 of 8



REFERENCE WELLPATH IDENTIFICATION			
Operator	SRC ENERGY	Slot	SLOT#07 TROUDT 41C-23-M (760'FNL & 1684'FWL, SEC.27)
Area	COLORADO	Well	TROUDT 41C-23-M
Field	WELD COUNTY (NAD83,TRUE NORTH)	Wellbore	TROUDT 41C-23-M PWB
Facility	SEC.27-T06N-R66W		

WELLPATH DATA (158 stations) † = interpolated/extrapolated station								
MD [ft]	Inclination [°]	Azimuth [°]	TVD [ft]	Vert Sect [ft]	North [ft]	East [ft]	DLS [°/100ft]	Comments
14525.00†	90.281	90.156	7138.27	8070.91	1943.27	7834.91	0.00	
14625.00†	90.281	90.156	7137.78	8168.34	1943.00	7934.91	0.00	
14725.00†	90.281	90.156	7137.29	8265.76	1942.72	8034.91	0.00	
14825.00†	90.281	90.156	7136.80	8363.19	1942.45	8134.91	0.00	
14925.00†	90.281	90.156	7136.31	8460.62	1942.18	8234.91	0.00	
15025.00†	90.281	90.156	7135.82	8558.05	1941.91	8334.90	0.00	
15125.00†	90.281	90.156	7135.33	8655.48	1941.63	8434.90	0.00	
15192.09	90.281	90.156	7135.00 ²	8720.84	1941.45	8501.99	0.00	End of Tangent

HOLE & CASING SECTIONS - Ref Wellbore: TROUDT 41C-23-M PWB Ref Wellpath: TROUDT 41C-23-M PWP (REV-A.0)									
String/Diameter	Start MD [ft]	End MD [ft]	Interval [ft]	Start TVD [ft]	End TVD [ft]	Start N/S [ft]	Start E/W [ft]	End N/S [ft]	End E/W [ft]
13.5in Open Hole	25.00	1750.00	1725.00	25.00	1705.77	0.00	0.00	320.98	91.65
9.625in Casing Surface	25.00	1750.00	1725.00	25.00	1705.77	0.00	0.00	320.98	91.65
8.5in Open Hole	1750.00	15192.09	13442.09	1705.77	7135.00	320.98	91.65	1941.45	8501.99



Planned Wellpath Report

TROUDT 41C-23-M PWP (REV-A.0)
Page 8 of 8



REFERENCE WELLPATH IDENTIFICATION			
Operator	SRC ENERGY	Slot	SLOT#07 TROUDT 41C-23-M (760'FNL & 1684'FWL, SEC.27)
Area	COLORADO	Well	TROUDT 41C-23-M
Field	WELD COUNTY (NAD83, TRUE NORTH)	Wellbore	TROUDT 41C-23-M PWB
Facility	SEC.27-T06N-R66W		

TARGETS									
Name	MD [ft]	TVD [ft]	North [ft]	East [ft]	Grid East [US ft]	Grid North [US ft]	Latitude	Longitude	Shape
SEC.28-T06N-R66W		0.00	0.00	-89.88	3203773.74	1412932.71	40°27'52.531"N	104°46'03.497"W	polygon
SEC.29-T06N-R66W EAST HALF		0.00	0.00	-89.88	3203773.74	1412932.71	40°27'52.531"N	104°46'03.497"W	polygon
SEC.22-T06N-R66W		1.00	1412.73	-8099.02	3195753.51	1414279.17	40°28'06.478"N	104°47'47.123"W	polygon
SEC.23-T06N-R66W		1.00	4231.29	-1957.19	3201871.60	1417148.27	40°28'34.342"N	104°46'27.660"W	polygon
SEC.26-T06N-R66W		1.00	-4763.04	585.30	3204488.23	1408175.60	40°27'05.465"N	104°45'54.763"W	polygon
SEC.27-T06N-R66W		1.00	-4763.04	585.30	3204488.23	1408175.60	40°27'05.465"N	104°45'54.763"W	polygon
2) TROUDT 41C-23-M BHL ON PLAT (1214'FSL & 510'FEL, SEC.23)	15192.09	7135.00	1941.45	8501.99	3212348.95	1414945.01	40°28'11.701"N	104°44'12.329"W	circle
1) TROUDT 41C-23-M TOP OF PROD ON PLAT (1208'FSL & 2524'FEL, SEC.22)	7840.20	7171.00	1961.51	1150.22	3204997.54	1414904.32	40°28'11.914"N	104°45'47.452"W	circle

SURVEY PROGRAM - Ref Wellbore: TROUDT 41C-23-M PWB Ref Wellpath: TROUDT 41C-23-M PWP (REV-A.0)				
Start MD [ft]	End MD [ft]	Positional Uncertainty Model	Log Name/Comment	Wellbore
25.00	1750.00	Custom BHI NaviTrak (Standard Rotating+Axial Corr) (Rockies 0.03Gt model)		TROUDT 41C-23-M PWB
1750.00	15192.09	Custom BHI AutoTrak Curve (IFR1, Short) (Rockies 0.03Gt model)		TROUDT 41C-23-M PWB