

SRC ENERGY

Location: COLORADO Slot: SLOT#04 TROUDT 1N-23B-M (760'FNL & 1640'FWL, SEC.27)
Field: WELD COUNTY (NAD83, TRUE NORTH) Well: TROUDT 1N-23B-M
Facility: SEC.27-T06N-R66W Wellbore: TROUDT 1N-23B-M PWB

Plot reference wellpath is TROUDT 1N-23B-M PWP (REV-A.0)	Grid System: NAD83 / Lambert Colorado SP, Northern Zone (501), US feet
True vertical depths are referenced to PD 562 (25) (RKB)	* = Wellpath was transformed from a different geodetic datum
Measured depths are referenced to PD 562 (25) (RKB)	North Reference: True north
PD 562 (25) (RKB) to Mean Sea Level: 4744 feet	Scale: True distance
Mean Sea Level to Mud line (At Slot: SLOT#04 TROUDT 1N-23B-M (760'FNL & 1640'FWL, SEC.27)): 0 feet	Depths are in feet
Coordinates are in feet referenced to Slot	Created by: doddanna on 2017-09-18
	Database: WellArchitectDB

Location Information

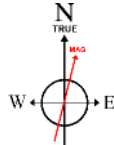
Facility Name			Grid East (US ft)	Grid North (US ft)	Latitude	Longitude
SEC.27-T06N-R66W			320373.744	1412932.710	40°27'52.531"N	104°46'03.497"W
Slot	Local N (ft)	Local E (ft)	Grid East (US ft)	Grid North (US ft)	Latitude	Longitude
SLOT#04 TROUDT 1N-23B-M (760'FNL & 1640'FWL, SEC.27)	0.00	45.08	3203818.819	1412933.083	40°27'52.531"N	104°46'02.914"W
PD 562 (25) (RKB) to Mud line (At Slot: SLOT#04 TROUDT 1N-23B-M (760'FNL & 1640'FWL, SEC.27))						4744ft
Mean Sea Level to Mud line (At Slot: SLOT#04 TROUDT 1N-23B-M (760'FNL & 1640'FWL, SEC.27))						0ft
PD 562 (25) (RKB) to Mean Sea Level						4744ft

Survey Program

Start MD (ft)	End MD (ft)	Tool	Model	Log Name/Comment	Wellbore
25.00	1750.00	BHI NauTrak	Custom BHI NauTrak (Standard Rotations-Axial Cor) (Rockies 0.03G model)		TROUDT 1N-23B-M PWB
1750.00	15270.54	BHI AutoTrak Curve	Custom BHI AutoTrak Curve (IFR1, Short) (Rockies 0.03G model)		TROUDT 1N-23B-M PWB

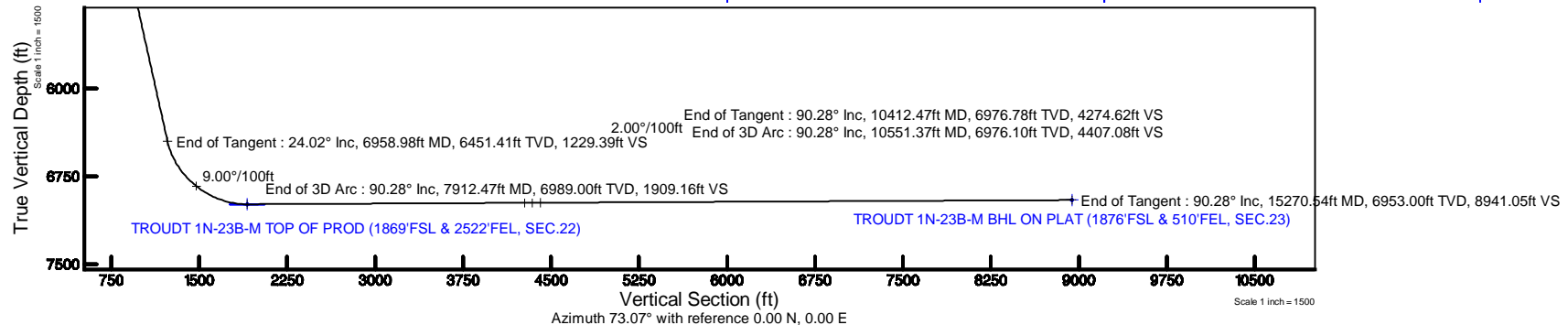
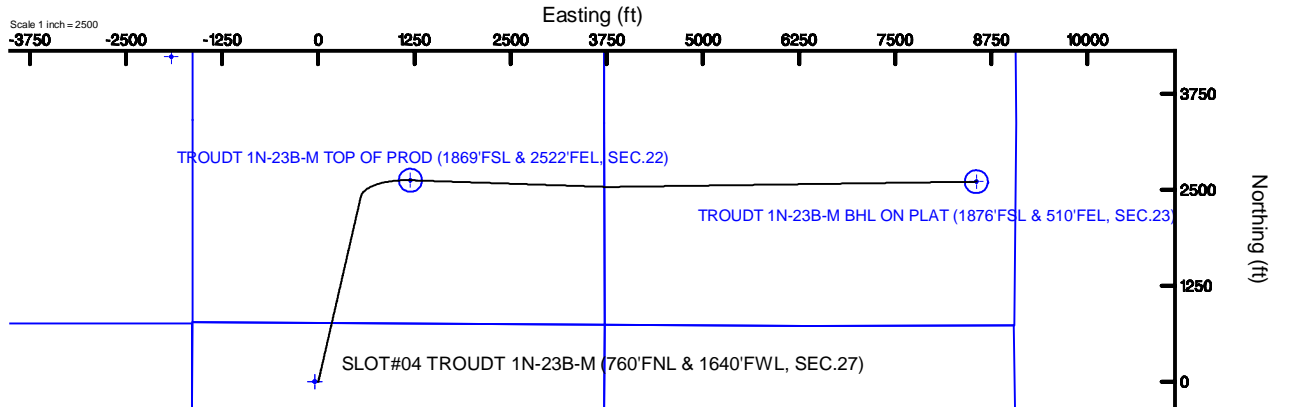


SRC ENERGY



BGGM (1900.0 to 2019.0) Dip: 66.90° Field: 52426.1 nT
Magnetic North is 8.37 degrees East of True North (at 8/31/2017)

To correct azimuth from Magnetic to True add 8.37 degrees



TROUDT_1N-23B-M_PWP__REV-A.0_.las

~VERSION INFORMATION

VERS. 2.0 : CWLS LOG ASCII STANDARD-VERSION 2.0

WRAP. NO : ASCII DATA SECTION CONTAINS ONE ROW PER WELLPATH STATION

~WELL INFORMATION

#MNEM	.UNITS	DATA	:DESCRIPTION
#----	.-----	----	:-----
STRT	.ft	0.00	:START MD
STOP	.ft	15270.54	:STOP MD
STEP	.ft	0.0	:STEP (non-uniform increment)
NULL	.	-999.99	:NULL
COMP	.	SRC ENERGY	:OPERATOR
WELL	.	TROUDT 1N-23B-M	:WELL
FLD	.	WELD COUNTY (NAD83,TRUE NORTH)	:FIELD
LOC	.	COLORADO	:AREA (aka: Location)
CNTY	.	N/A	:COUNTY
STAT	.	N/A	:STATE
CTRY	.	N/A	:COUNTRY
SRVC	.	Baker Hughes	:CONTRACTOR
DATE	.	09/05/2017	:LOG REV DATE
API	.		:API NUMBER

~OTHER INFORMATION

#Software: WellArchitect(R) Version 5.0

#MNEM	.UNITS	DATA	:DESCRIPTION
#----	.-----	----	:-----
WPTYPE	.	PLANNED WELLPATH	:WELLPATH TYPE
FACILITY	.	SEC.27-T06N-R66W	:FACILITY
SLOT	.	SLOT#04 TROUDT 1N-23B-M (760'FNL & 1640'FWL, SEC.27):SLOT	:SLOT
WELLBORE	.	TROUDT 1N-23B-M PWB	:WELLBORE
WELLPATH	.	TROUDT 1N-23B-M PWP (REV-A.0)	:WELLPATH
MDREFPT	.	PD 562 (25') (RKB)	:MD REFERENCE POINT
TVDREFPT	.	PD 562 (25') (RKB)	:TVD REFERENCE POINT
LCLREFPT	.	Slot	:LOCAL COORDINATE REFERENCE PT

TROUDT_1N-23B-M_PWP__REV-A.0_.las

VSAZIMUTH.deg	73.07	:VERTICAL SECTION AZIMUTH
VSORIGN .ft	0.00	:VERTICAL SECTION ORIGIN NORTH
VSORIGE .ft	0.00	:VERTICAL SECTION ORIGIN EAST

~CURVE (WELLPATH) INFORMATION

#MNEM	.UNITS	:DESCRIPTION
#----	.-----	:-----
DEPT	.ft	:MEASURED DEPTH
INC	.deg	:INCLINATION
AZI	.deg	:AZIMUTH
TVD	.ft	:TRUE VERTICAL DEPTH
SECT	.ft	:CROSS SECTION (CURTAIN/VERTICAL)
LOCALN	.ft	:LOCAL NORTH
LOCALE	.ft	:LOCAL EAST
LAT	.deg	:LATITUDE
LONG	.deg	:LONGITUDE
DLS	.deg/100ft	:DOGLEG SEVERITY

~ASCII DATA

0.00	0.00	12.92	0.00	0.00	0.00	0.00	40.4645920	-104.7674760	0.00
25.00	0.00	12.92	25.00	0.00	0.00	0.00	40.4645920	-104.7674760	0.00
125.00	0.00	12.92	125.00	0.00	0.00	0.00	40.4645920	-104.7674760	0.00
225.00	0.00	12.92	225.00	0.00	0.00	0.00	40.4645920	-104.7674760	0.00
300.00	0.00	12.92	300.00	0.00	0.00	0.00	40.4645920	-104.7674760	0.00
325.00	0.50	12.92	325.00	0.05	0.11	0.02	40.4645923	-104.7674759	2.00
425.00	2.50	12.92	424.96	1.36	2.66	0.61	40.4645993	-104.7674738	2.00
525.00	4.50	12.92	524.77	4.40	8.61	1.97	40.4646156	-104.7674689	2.00
625.00	6.50	12.92	624.30	9.17	17.95	4.12	40.4646413	-104.7674612	2.00
725.00	8.50	12.92	723.44	15.66	30.67	7.04	40.4646762	-104.7674507	2.00
825.00	10.50	12.92	822.07	23.88	46.76	10.73	40.4647203	-104.7674375	2.00
925.00	12.50	12.92	920.05	33.80	66.19	15.18	40.4647737	-104.7674214	2.00
1025.00	14.50	12.92	1017.29	45.42	88.94	20.40	40.4648361	-104.7674027	2.00
1125.00	16.50	12.92	1113.64	58.72	114.99	26.38	40.4649076	-104.7673812	2.00
1225.00	18.50	12.92	1209.01	73.69	144.29	33.10	40.4649881	-104.7673570	2.00

TROUDT_1N-23B-M_PWP__REV-A.0_.las

1325.00	20.50	12.92	1303.27	90.30	176.83	40.56	40.4650774	-104.7673302	2.00
1425.00	22.50	12.92	1396.31	108.54	212.55	48.76	40.4651754	-104.7673008	2.00
1501.07	24.02	12.92	1466.19	123.50	241.83	55.48	40.4652558	-104.7672766	2.00
1525.00	24.02	12.92	1488.05	128.34	251.32	57.65	40.4652818	-104.7672688	0.00
1625.00	24.02	12.92	1579.39	148.61	291.00	66.76	40.4653908	-104.7672361	0.00
1725.00	24.02	12.92	1670.73	168.87	330.68	75.86	40.4654997	-104.7672034	0.00
1825.00	24.02	12.92	1762.07	189.13	370.35	84.96	40.4656086	-104.7671707	0.00
1925.00	24.02	12.92	1853.41	209.39	410.03	94.06	40.4657175	-104.7671380	0.00
2025.00	24.02	12.92	1944.75	229.66	449.71	103.16	40.4658264	-104.7671052	0.00
2125.00	24.02	12.92	2036.09	249.92	489.39	112.27	40.4659353	-104.7670725	0.00
2225.00	24.02	12.92	2127.43	270.18	529.06	121.37	40.4660442	-104.7670398	0.00
2325.00	24.02	12.92	2218.76	290.44	568.74	130.47	40.4661531	-104.7670071	0.00
2425.00	24.02	12.92	2310.10	310.70	608.42	139.57	40.4662620	-104.7669744	0.00
2525.00	24.02	12.92	2401.44	330.97	648.09	148.67	40.4663709	-104.7669417	0.00
2625.00	24.02	12.92	2492.78	351.23	687.77	157.77	40.4664798	-104.7669090	0.00
2725.00	24.02	12.92	2584.12	371.49	727.45	166.88	40.4665887	-104.7668763	0.00
2825.00	24.02	12.92	2675.46	391.75	767.13	175.98	40.4666977	-104.7668435	0.00
2925.00	24.02	12.92	2766.80	412.01	806.80	185.08	40.4668066	-104.7668108	0.00
3025.00	24.02	12.92	2858.14	432.28	846.48	194.18	40.4669155	-104.7667781	0.00
3125.00	24.02	12.92	2949.48	452.54	886.16	203.28	40.4670244	-104.7667454	0.00
3225.00	24.02	12.92	3040.82	472.80	925.83	212.39	40.4671333	-104.7667127	0.00
3325.00	24.02	12.92	3132.16	493.06	965.51	221.49	40.4672422	-104.7666800	0.00
3425.00	24.02	12.92	3223.50	513.33	1005.19	230.59	40.4673511	-104.7666473	0.00
3525.00	24.02	12.92	3314.84	533.59	1044.87	239.69	40.4674600	-104.7666146	0.00
3625.00	24.02	12.92	3406.18	553.85	1084.54	248.79	40.4675689	-104.7665818	0.00
3725.00	24.02	12.92	3497.52	574.11	1124.22	257.90	40.4676778	-104.7665491	0.00
3825.00	24.02	12.92	3588.86	594.37	1163.90	267.00	40.4677867	-104.7665164	0.00
3925.00	24.02	12.92	3680.19	614.64	1203.57	276.10	40.4678956	-104.7664837	0.00
4025.00	24.02	12.92	3771.53	634.90	1243.25	285.20	40.4680046	-104.7664510	0.00
4125.00	24.02	12.92	3862.87	655.16	1282.93	294.30	40.4681135	-104.7664183	0.00
4225.00	24.02	12.92	3954.21	675.42	1322.60	303.41	40.4682224	-104.7663856	0.00
4325.00	24.02	12.92	4045.55	695.68	1362.28	312.51	40.4683313	-104.7663528	0.00
4425.00	24.02	12.92	4136.89	715.95	1401.96	321.61	40.4684402	-104.7663201	0.00
4525.00	24.02	12.92	4228.23	736.21	1441.64	330.71	40.4685491	-104.7662874	0.00

TROUDT_1N-23B-M_PWP__REV-A.0_.las

4625.00	24.02	12.92	4319.57	756.47	1481.31	339.81	40.4686580	-104.7662547	0.00
4725.00	24.02	12.92	4410.91	776.73	1520.99	348.92	40.4687669	-104.7662220	0.00
4825.00	24.02	12.92	4502.25	796.99	1560.67	358.02	40.4688758	-104.7661893	0.00
4925.00	24.02	12.92	4593.59	817.26	1600.34	367.12	40.4689847	-104.7661566	0.00
5025.00	24.02	12.92	4684.93	837.52	1640.02	376.22	40.4690936	-104.7661238	0.00
5125.00	24.02	12.92	4776.27	857.78	1679.70	385.32	40.4692025	-104.7660911	0.00
5225.00	24.02	12.92	4867.61	878.04	1719.38	394.43	40.4693115	-104.7660584	0.00
5325.00	24.02	12.92	4958.95	898.31	1759.05	403.53	40.4694204	-104.7660257	0.00
5425.00	24.02	12.92	5050.29	918.57	1798.73	412.63	40.4695293	-104.7659930	0.00
5525.00	24.02	12.92	5141.62	938.83	1838.41	421.73	40.4696382	-104.7659603	0.00
5625.00	24.02	12.92	5232.96	959.09	1878.08	430.83	40.4697471	-104.7659275	0.00
5725.00	24.02	12.92	5324.30	979.35	1917.76	439.94	40.4698560	-104.7658948	0.00
5825.00	24.02	12.92	5415.64	999.62	1957.44	449.04	40.4699649	-104.7658621	0.00
5925.00	24.02	12.92	5506.98	1019.88	1997.12	458.14	40.4700738	-104.7658294	0.00
6025.00	24.02	12.92	5598.32	1040.14	2036.79	467.24	40.4701827	-104.7657967	0.00
6125.00	24.02	12.92	5689.66	1060.40	2076.47	476.34	40.4702916	-104.7657640	0.00
6225.00	24.02	12.92	5781.00	1080.66	2116.15	485.44	40.4704005	-104.7657312	0.00
6325.00	24.02	12.92	5872.34	1100.93	2155.82	494.55	40.4705094	-104.7656985	0.00
6425.00	24.02	12.92	5963.68	1121.19	2195.50	503.65	40.4706183	-104.7656658	0.00
6525.00	24.02	12.92	6055.02	1141.45	2235.18	512.75	40.4707273	-104.7656331	0.00
6625.00	24.02	12.92	6146.36	1161.71	2274.86	521.85	40.4708362	-104.7656004	0.00
6725.00	24.02	12.92	6237.70	1181.98	2314.53	530.95	40.4709451	-104.7655677	0.00
6825.00	24.02	12.92	6329.04	1202.24	2354.21	540.06	40.4710540	-104.7655349	0.00
6925.00	24.02	12.92	6420.38	1222.50	2393.89	549.16	40.4711629	-104.7655022	0.00
6958.98	24.02	12.92	6451.41	1229.39	2407.37	552.25	40.4711999	-104.7654911	0.00
7025.00	25.70	26.51	6511.36	1245.93	2433.30	561.65	40.4712711	-104.7654573	9.00
7125.00	30.23	43.19	6599.80	1282.75	2471.14	588.62	40.4713749	-104.7653604	9.00
7225.00	36.32	55.32	6683.45	1332.88	2506.41	630.29	40.4714717	-104.7652106	9.00
7325.00	43.32	64.20	6760.27	1395.11	2538.26	685.65	40.4715592	-104.7650117	9.00
7425.00	50.84	70.96	6828.36	1467.90	2565.90	753.32	40.4716350	-104.7647684	9.00
7525.00	58.68	76.39	6886.04	1549.46	2588.64	831.65	40.4716974	-104.7644869	9.00
7625.00	66.71	80.98	6931.90	1637.77	2605.92	918.70	40.4717449	-104.7641740	9.00
7725.00	74.86	85.03	6964.80	1730.67	2617.33	1012.33	40.4717762	-104.7638375	9.00
7825.00	83.07	88.78	6983.93	1825.86	2622.58	1110.24	40.4717906	-104.7634856	9.00

TROUDT_1N-23B-M_PWP__REV-A.0_.las

7912.47	90.28	91.95	6989.00	1909.16	2622.01	1197.48	40.4717890	-104.7631720	9.00
7925.00	90.28	91.95	6988.94	1921.02	2621.59	1210.01	40.4717878	-104.7631270	0.00
8025.00	90.28	91.95	6988.45	2015.64	2618.19	1309.95	40.4717785	-104.7627678	0.00
8125.00	90.28	91.95	6987.96	2110.26	2614.78	1409.89	40.4717691	-104.7624086	0.00
8225.00	90.28	91.95	6987.47	2204.87	2611.38	1509.83	40.4717598	-104.7620494	0.00
8325.00	90.28	91.95	6986.98	2299.49	2607.98	1609.77	40.4717504	-104.7616902	0.00
8425.00	90.28	91.95	6986.50	2394.11	2604.57	1709.72	40.4717410	-104.7613309	0.00
8525.00	90.28	91.95	6986.01	2488.73	2601.17	1809.66	40.4717317	-104.7609717	0.00
8625.00	90.28	91.95	6985.52	2583.35	2597.77	1909.60	40.4717223	-104.7606125	0.00
8725.00	90.28	91.95	6985.03	2677.97	2594.37	2009.54	40.4717130	-104.7602533	0.00
8825.00	90.28	91.95	6984.54	2772.58	2590.96	2109.48	40.4717036	-104.7598941	0.00
8925.00	90.28	91.95	6984.05	2867.20	2587.56	2209.42	40.4716942	-104.7595349	0.00
9025.00	90.28	91.95	6983.56	2961.82	2584.16	2309.36	40.4716849	-104.7591757	0.00
9125.00	90.28	91.95	6983.07	3056.44	2580.76	2409.30	40.4716755	-104.7588165	0.00
9225.00	90.28	91.95	6982.59	3151.06	2577.35	2509.24	40.4716661	-104.7584573	0.00
9325.00	90.28	91.95	6982.10	3245.67	2573.95	2609.18	40.4716568	-104.7580981	0.00
9425.00	90.28	91.95	6981.61	3340.29	2570.55	2709.12	40.4716474	-104.7577389	0.00
9525.00	90.28	91.95	6981.12	3434.91	2567.15	2809.07	40.4716380	-104.7573797	0.00
9625.00	90.28	91.95	6980.63	3529.53	2563.74	2909.01	40.4716287	-104.7570205	0.00
9725.00	90.28	91.95	6980.14	3624.15	2560.34	3008.95	40.4716193	-104.7566613	0.00
9825.00	90.28	91.95	6979.65	3718.77	2556.94	3108.89	40.4716099	-104.7563021	0.00
9925.00	90.28	91.95	6979.16	3813.38	2553.53	3208.83	40.4716005	-104.7559429	0.00
10025.00	90.28	91.95	6978.68	3908.00	2550.13	3308.77	40.4715912	-104.7555837	0.00
10125.00	90.28	91.95	6978.19	4002.62	2546.73	3408.71	40.4715818	-104.7552244	0.00
10225.00	90.28	91.95	6977.70	4097.24	2543.33	3508.65	40.4715724	-104.7548652	0.00
10325.00	90.28	91.95	6977.21	4191.86	2539.92	3608.59	40.4715630	-104.7545060	0.00
10412.47	90.28	91.95	6976.78	4274.62	2536.95	3696.01	40.4715548	-104.7541919	0.00
10425.00	90.28	91.70	6976.72	4286.48	2536.55	3708.53	40.4715537	-104.7541468	2.00
10525.00	90.28	89.70	6976.23	4381.78	2535.33	3808.52	40.4715503	-104.7537875	2.00
10551.37	90.28	89.17	6976.10	4407.08	2535.59	3834.89	40.4715510	-104.7536927	2.00
10625.00	90.28	89.17	6975.74	4477.82	2536.65	3908.51	40.4715539	-104.7534281	0.00
10725.00	90.28	89.17	6975.25	4573.90	2538.10	4008.50	40.4715578	-104.7530687	0.00
10825.00	90.28	89.17	6974.76	4669.97	2539.54	4108.49	40.4715618	-104.7527093	0.00
10925.00	90.28	89.17	6974.27	4766.05	2540.99	4208.48	40.4715657	-104.7523499	0.00

TROUDT_1N-23B-M_PWP__REV-A.0_.las

11025.00	90.28	89.17	6973.78	4862.12	2542.43	4308.46	40.4715696	-104.7519906	0.00
11125.00	90.28	89.17	6973.29	4958.20	2543.88	4408.45	40.4715735	-104.7516312	0.00
11225.00	90.28	89.17	6972.81	5054.27	2545.32	4508.44	40.4715774	-104.7512718	0.00
11325.00	90.28	89.17	6972.32	5150.35	2546.77	4608.43	40.4715814	-104.7509124	0.00
11425.00	90.28	89.17	6971.83	5246.43	2548.21	4708.42	40.4715853	-104.7505531	0.00
11525.00	90.28	89.17	6971.34	5342.50	2549.66	4808.41	40.4715892	-104.7501937	0.00
11625.00	90.28	89.17	6970.85	5438.58	2551.11	4908.39	40.4715931	-104.7498343	0.00
11725.00	90.28	89.17	6970.36	5534.65	2552.55	5008.38	40.4715970	-104.7494749	0.00
11825.00	90.28	89.17	6969.87	5630.73	2554.00	5108.37	40.4716009	-104.7491155	0.00
11925.00	90.28	89.17	6969.38	5726.80	2555.44	5208.36	40.4716048	-104.7487562	0.00
12025.00	90.28	89.17	6968.89	5822.88	2556.89	5308.35	40.4716087	-104.7483968	0.00
12125.00	90.28	89.17	6968.40	5918.95	2558.33	5408.34	40.4716127	-104.7480374	0.00
12225.00	90.28	89.17	6967.91	6015.03	2559.78	5508.32	40.4716166	-104.7476780	0.00
12325.00	90.28	89.17	6967.42	6111.10	2561.22	5608.31	40.4716205	-104.7473187	0.00
12425.00	90.28	89.17	6966.93	6207.18	2562.67	5708.30	40.4716244	-104.7469593	0.00
12525.00	90.28	89.17	6966.44	6303.26	2564.11	5808.29	40.4716283	-104.7465999	0.00
12625.00	90.28	89.17	6965.95	6399.33	2565.56	5908.28	40.4716322	-104.7462405	0.00
12725.00	90.28	89.17	6965.46	6495.41	2567.00	6008.27	40.4716361	-104.7458811	0.00
12825.00	90.28	89.17	6964.97	6591.48	2568.45	6108.25	40.4716400	-104.7455218	0.00
12925.00	90.28	89.17	6964.48	6687.56	2569.89	6208.24	40.4716439	-104.7451624	0.00
13025.00	90.28	89.17	6963.99	6783.63	2571.34	6308.23	40.4716478	-104.7448030	0.00
13125.00	90.28	89.17	6963.50	6879.71	2572.79	6408.22	40.4716517	-104.7444436	0.00
13225.00	90.28	89.17	6963.01	6975.78	2574.23	6508.21	40.4716556	-104.7440842	0.00
13325.00	90.28	89.17	6962.52	7071.86	2575.68	6608.20	40.4716595	-104.7437249	0.00
13425.00	90.28	89.17	6962.04	7167.93	2577.12	6708.18	40.4716633	-104.7433655	0.00
13525.00	90.28	89.17	6961.55	7264.01	2578.57	6808.17	40.4716672	-104.7430061	0.00
13625.00	90.28	89.17	6961.06	7360.08	2580.01	6908.16	40.4716711	-104.7426467	0.00
13725.00	90.28	89.17	6960.57	7456.16	2581.46	7008.15	40.4716750	-104.7422874	0.00
13825.00	90.28	89.17	6960.08	7552.24	2582.90	7108.14	40.4716789	-104.7419280	0.00
13925.00	90.28	89.17	6959.59	7648.31	2584.35	7208.13	40.4716828	-104.7415686	0.00
14025.00	90.28	89.17	6959.10	7744.39	2585.79	7308.11	40.4716867	-104.7412092	0.00
14125.00	90.28	89.17	6958.61	7840.46	2587.24	7408.10	40.4716906	-104.7408498	0.00
14225.00	90.28	89.17	6958.12	7936.54	2588.68	7508.09	40.4716945	-104.7404905	0.00
14325.00	90.28	89.17	6957.63	8032.61	2590.13	7608.08	40.4716983	-104.7401311	0.00

TROUDT_1N-23B-M_PWP__REV-A.0_.las

14425.00	90.28	89.17	6957.14	8128.69	2591.57	7708.07	40.4717022	-104.7397717	0.00
14525.00	90.28	89.17	6956.65	8224.76	2593.02	7808.06	40.4717061	-104.7394123	0.00
14625.00	90.28	89.17	6956.16	8320.84	2594.47	7908.04	40.4717100	-104.7390529	0.00
14725.00	90.28	89.17	6955.67	8416.91	2595.91	8008.03	40.4717139	-104.7386936	0.00
14825.00	90.28	89.17	6955.18	8512.99	2597.36	8108.02	40.4717177	-104.7383342	0.00
14925.00	90.28	89.17	6954.69	8609.07	2598.80	8208.01	40.4717216	-104.7379748	0.00
15025.00	90.28	89.17	6954.20	8705.14	2600.25	8308.00	40.4717255	-104.7376154	0.00
15125.00	90.28	89.17	6953.71	8801.22	2601.69	8407.99	40.4717294	-104.7372560	0.00
15225.00	90.28	89.17	6953.22	8897.29	2603.14	8507.97	40.4717332	-104.7368967	0.00
15264.89	90.28	89.17	6953.03	8935.61	2603.71	8547.86	40.4717348	-104.7367533	0.00
15270.54	90.28	89.17	6953.00	8941.05	2603.80	8553.51	40.4717350	-104.7367330	0.00



Planned Wellpath Report

TROUDT 1N-23B-M PWP (REV-A.0)

Page 1 of 8



REFERENCE WELLPATH IDENTIFICATION

Operator	SRC ENERGY	Slot	SLOT#04 TROUDT 1N-23B-M (760'FNL & 1640'FWL, SEC.27)
Area	COLORADO	Well	TROUDT 1N-23B-M
Field	WELD COUNTY (NAD83, TRUE NORTH)	Wellbore	TROUDT 1N-23B-M PWB
Facility	SEC.27-T06N-R66W		

REPORT SETUP INFORMATION

Projection System	NAD83 / Lambert Colorado SP, Northern Zone (501), US feet	Software System	WellArchitect® 5.0
North Reference	True	User	Doddanna
Scale	0.999964	Report Generated	9/18/2017 at 9:53:19 AM
Convergence at slot	0.47° East	Database/Source file	WellArchitectDB/TROUDT_1N-23B-M_PWP__REV-A.0_.xml

WELLPATH LOCATION

	Local coordinates		Grid coordinates		Geographic coordinates	
	North[ft]	East[ft]	Easting[US ft]	Northing[US ft]	Latitude	Longitude
Slot Location	0.00	45.08	3203818.82	1412933.08	40°27'52.531"N	104°46'02.914"W
Facility Reference Pt			3203773.74	1412932.71	40°27'52.531"N	104°46'03.497"W
Field Reference Pt			3171284.48	1426358.81	40°30'07.643"N	104°53'02.634"W

WELLPATH DATUM

Calculation method	Minimum curvature	PD 562 (25') (RKB) to Facility Vertical Datum	4744.00ft
Horizontal Reference Pt	Slot	PD 562 (25') (RKB) to Mean Sea Level	4744.00ft
Vertical Reference Pt	PD 562 (25') (RKB)	PD 562 (25') (RKB) to Mud Line at Slot (SLOT#04 TROUDT 1N-23B-M (760'FNL & 1640'FWL, SEC.27))	4744.00ft
MD Reference Pt	PD 562 (25') (RKB)	Section Origin	N 0.00, E 0.00 ft
Field Vertical Reference	Mean Sea Level	Section Azimuth	73.07°



Planned Wellpath Report

TROUDT 1N-23B-M PWP (REV-A.0)

Page 2 of 8



REFERENCE WELLPATH IDENTIFICATION			
Operator	SRC ENERGY	Slot	SLOT#04 TROUDT 1N-23B-M (760'FNL & 1640'FWL, SEC.27)
Area	COLORADO	Well	TROUDT 1N-23B-M
Field	WELD COUNTY (NAD83,TRUE NORTH)	Wellbore	TROUDT 1N-23B-M PWB
Facility	SEC.27-T06N-R66W		

WELLPATH DATA (162 stations) † = interpolated/extrapolated station								
MD [ft]	Inclination [°]	Azimuth [°]	TVD [ft]	Vert Sect [ft]	North [ft]	East [ft]	DLS [°/100ft]	Comments
0.00†	0.000	12.920	0.00	0.00	0.00	0.00	0.00	
25.00	0.000	12.920	25.00	0.00	0.00	0.00	0.00	Tie On
125.00†	0.000	12.920	125.00	0.00	0.00	0.00	0.00	
225.00†	0.000	12.920	225.00	0.00	0.00	0.00	0.00	
300.00	0.000	12.920	300.00	0.00	0.00	0.00	0.00	End of Tangent
325.00†	0.500	12.920	325.00	0.05	0.11	0.02	2.00	
425.00†	2.500	12.920	424.96	1.36	2.66	0.61	2.00	
525.00†	4.500	12.920	524.77	4.40	8.61	1.97	2.00	
625.00†	6.500	12.920	624.30	9.17	17.95	4.12	2.00	
725.00†	8.500	12.920	723.44	15.66	30.67	7.04	2.00	
825.00†	10.500	12.920	822.07	23.88	46.76	10.73	2.00	
925.00†	12.500	12.920	920.05	33.80	66.19	15.18	2.00	
1025.00†	14.500	12.920	1017.29	45.42	88.94	20.40	2.00	
1125.00†	16.500	12.920	1113.64	58.72	114.99	26.38	2.00	
1225.00†	18.500	12.920	1209.01	73.69	144.29	33.10	2.00	
1325.00†	20.500	12.920	1303.27	90.30	176.83	40.56	2.00	
1425.00†	22.500	12.920	1396.31	108.54	212.55	48.76	2.00	
1501.07	24.021	12.920	1466.19	123.50	241.83	55.48	2.00	End of Build
1525.00†	24.021	12.920	1488.05	128.34	251.32	57.65	0.00	
1625.00†	24.021	12.920	1579.39	148.61	291.00	66.76	0.00	
1725.00†	24.021	12.920	1670.73	168.87	330.68	75.86	0.00	
1825.00†	24.021	12.920	1762.07	189.13	370.35	84.96	0.00	
1925.00†	24.021	12.920	1853.41	209.39	410.03	94.06	0.00	
2025.00†	24.021	12.920	1944.75	229.66	449.71	103.16	0.00	
2125.00†	24.021	12.920	2036.09	249.92	489.39	112.27	0.00	
2225.00†	24.021	12.920	2127.43	270.18	529.06	121.37	0.00	
2325.00†	24.021	12.920	2218.76	290.44	568.74	130.47	0.00	
2425.00†	24.021	12.920	2310.10	310.70	608.42	139.57	0.00	
2525.00†	24.021	12.920	2401.44	330.97	648.09	148.67	0.00	
2625.00†	24.021	12.920	2492.78	351.23	687.77	157.77	0.00	



Planned Wellpath Report

TROUDT 1N-23B-M PWP (REV-A.0)

Page 3 of 8



REFERENCE WELLPATH IDENTIFICATION			
Operator	SRC ENERGY	Slot	SLOT#04 TROUDT 1N-23B-M (760'FNL & 1640'FWL, SEC.27)
Area	COLORADO	Well	TROUDT 1N-23B-M
Field	WELD COUNTY (NAD83,TRUE NORTH)	Wellbore	TROUDT 1N-23B-M PWB
Facility	SEC.27-T06N-R66W		

WELLPATH DATA (162 stations) † = interpolated/extrapolated station								
MD [ft]	Inclination [°]	Azimuth [°]	TVD [ft]	Vert Sect [ft]	North [ft]	East [ft]	DLS [°/100ft]	Comments
2725.00†	24.021	12.920	2584.12	371.49	727.45	166.88	0.00	
2825.00†	24.021	12.920	2675.46	391.75	767.13	175.98	0.00	
2925.00†	24.021	12.920	2766.80	412.01	806.80	185.08	0.00	
3025.00†	24.021	12.920	2858.14	432.28	846.48	194.18	0.00	
3125.00†	24.021	12.920	2949.48	452.54	886.16	203.28	0.00	
3225.00†	24.021	12.920	3040.82	472.80	925.83	212.39	0.00	
3325.00†	24.021	12.920	3132.16	493.06	965.51	221.49	0.00	
3425.00†	24.021	12.920	3223.50	513.33	1005.19	230.59	0.00	
3525.00†	24.021	12.920	3314.84	533.59	1044.87	239.69	0.00	
3625.00†	24.021	12.920	3406.18	553.85	1084.54	248.79	0.00	
3725.00†	24.021	12.920	3497.52	574.11	1124.22	257.90	0.00	
3825.00†	24.021	12.920	3588.86	594.37	1163.90	267.00	0.00	
3925.00†	24.021	12.920	3680.19	614.64	1203.57	276.10	0.00	
4025.00†	24.021	12.920	3771.53	634.90	1243.25	285.20	0.00	
4125.00†	24.021	12.920	3862.87	655.16	1282.93	294.30	0.00	
4225.00†	24.021	12.920	3954.21	675.42	1322.60	303.41	0.00	
4325.00†	24.021	12.920	4045.55	695.68	1362.28	312.51	0.00	
4425.00†	24.021	12.920	4136.89	715.95	1401.96	321.61	0.00	
4525.00†	24.021	12.920	4228.23	736.21	1441.64	330.71	0.00	
4625.00†	24.021	12.920	4319.57	756.47	1481.31	339.81	0.00	
4725.00†	24.021	12.920	4410.91	776.73	1520.99	348.92	0.00	
4825.00†	24.021	12.920	4502.25	796.99	1560.67	358.02	0.00	
4925.00†	24.021	12.920	4593.59	817.26	1600.34	367.12	0.00	
5025.00†	24.021	12.920	4684.93	837.52	1640.02	376.22	0.00	
5125.00†	24.021	12.920	4776.27	857.78	1679.70	385.32	0.00	
5225.00†	24.021	12.920	4867.61	878.04	1719.38	394.43	0.00	
5325.00†	24.021	12.920	4958.95	898.31	1759.05	403.53	0.00	
5425.00†	24.021	12.920	5050.29	918.57	1798.73	412.63	0.00	
5525.00†	24.021	12.920	5141.62	938.83	1838.41	421.73	0.00	
5625.00†	24.021	12.920	5232.96	959.09	1878.08	430.83	0.00	



Planned Wellpath Report

TROUDT 1N-23B-M PWP (REV-A.0)

Page 4 of 8



REFERENCE WELLPATH IDENTIFICATION			
Operator	SRC ENERGY	Slot	SLOT#04 TROUDT 1N-23B-M (760'FNL & 1640'FWL, SEC.27)
Area	COLORADO	Well	TROUDT 1N-23B-M
Field	WELD COUNTY (NAD83,TRUE NORTH)	Wellbore	TROUDT 1N-23B-M PWB
Facility	SEC.27-T06N-R66W		

WELLPATH DATA (162 stations) † = interpolated/extrapolated station								
MD [ft]	Inclination [°]	Azimuth [°]	TVD [ft]	Vert Sect [ft]	North [ft]	East [ft]	DLS [°/100ft]	Comments
5725.00†	24.021	12.920	5324.30	979.35	1917.76	439.94	0.00	
5825.00†	24.021	12.920	5415.64	999.62	1957.44	449.04	0.00	
5925.00†	24.021	12.920	5506.98	1019.88	1997.12	458.14	0.00	
6025.00†	24.021	12.920	5598.32	1040.14	2036.79	467.24	0.00	
6125.00†	24.021	12.920	5689.66	1060.40	2076.47	476.34	0.00	
6225.00†	24.021	12.920	5781.00	1080.66	2116.15	485.44	0.00	
6325.00†	24.021	12.920	5872.34	1100.93	2155.82	494.55	0.00	
6425.00†	24.021	12.920	5963.68	1121.19	2195.50	503.65	0.00	
6525.00†	24.021	12.920	6055.02	1141.45	2235.18	512.75	0.00	
6625.00†	24.021	12.920	6146.36	1161.71	2274.86	521.85	0.00	
6725.00†	24.021	12.920	6237.70	1181.98	2314.53	530.95	0.00	
6825.00†	24.021	12.920	6329.04	1202.24	2354.21	540.06	0.00	
6925.00†	24.021	12.920	6420.38	1222.50	2393.89	549.16	0.00	
6958.98	24.021	12.920	6451.41	1229.39	2407.37	552.25	0.00	End of Tangent
7025.00†	25.702	26.508	6511.36	1245.93	2433.30	561.65	9.00	
7125.00†	30.230	43.191	6599.80	1282.75	2471.14	588.62	9.00	
7225.00†	36.324	55.324	6683.45	1332.88	2506.41	630.29	9.00	
7325.00†	43.321	64.197	6760.27	1395.11	2538.26	685.65	9.00	
7425.00†	50.843	70.964	6828.36	1467.90	2565.90	753.32	9.00	
7525.00†	58.680	76.394	6886.04	1549.46	2588.64	831.65	9.00	
7625.00†	66.709	80.976	6931.90	1637.77	2605.92	918.70	9.00	
7725.00†	74.857	85.030	6964.80	1730.67	2617.33	1012.33	9.00	
7825.00†	83.071	88.781	6983.93	1825.86	2622.58	1110.24	9.00	
7912.47	90.280	91.950	6989.00 [†]	1909.16	2622.01	1197.48	9.00	End of 3D Arc
7925.00†	90.280	91.950	6988.94	1921.02	2621.59	1210.01	0.00	
8025.00†	90.280	91.950	6988.45	2015.64	2618.19	1309.95	0.00	
8125.00†	90.280	91.950	6987.96	2110.26	2614.78	1409.89	0.00	
8225.00†	90.280	91.950	6987.47	2204.87	2611.38	1509.83	0.00	
8325.00†	90.280	91.950	6986.98	2299.49	2607.98	1609.77	0.00	
8425.00†	90.280	91.950	6986.50	2394.11	2604.57	1709.72	0.00	



Planned Wellpath Report

TROUDT 1N-23B-M PWP (REV-A.0)

Page 5 of 8



REFERENCE WELLPATH IDENTIFICATION			
Operator	SRC ENERGY	Slot	SLOT#04 TROUDT 1N-23B-M (760'FNL & 1640'FWL, SEC.27)
Area	COLORADO	Well	TROUDT 1N-23B-M
Field	WELD COUNTY (NAD83,TRUE NORTH)	Wellbore	TROUDT 1N-23B-M PWB
Facility	SEC.27-T06N-R66W		

WELLPATH DATA (162 stations) † = interpolated/extrapolated station								
MD [ft]	Inclination [°]	Azimuth [°]	TVD [ft]	Vert Sect [ft]	North [ft]	East [ft]	DLS [°/100ft]	Comments
8525.00†	90.280	91.950	6986.01	2488.73	2601.17	1809.66	0.00	
8625.00†	90.280	91.950	6985.52	2583.35	2597.77	1909.60	0.00	
8725.00†	90.280	91.950	6985.03	2677.97	2594.37	2009.54	0.00	
8825.00†	90.280	91.950	6984.54	2772.58	2590.96	2109.48	0.00	
8925.00†	90.280	91.950	6984.05	2867.20	2587.56	2209.42	0.00	
9025.00†	90.280	91.950	6983.56	2961.82	2584.16	2309.36	0.00	
9125.00†	90.280	91.950	6983.07	3056.44	2580.76	2409.30	0.00	
9225.00†	90.280	91.950	6982.59	3151.06	2577.35	2509.24	0.00	
9325.00†	90.280	91.950	6982.10	3245.67	2573.95	2609.18	0.00	
9425.00†	90.280	91.950	6981.61	3340.29	2570.55	2709.12	0.00	
9525.00†	90.280	91.950	6981.12	3434.91	2567.15	2809.07	0.00	
9625.00†	90.280	91.950	6980.63	3529.53	2563.74	2909.01	0.00	
9725.00†	90.280	91.950	6980.14	3624.15	2560.34	3008.95	0.00	
9825.00†	90.280	91.950	6979.65	3718.77	2556.94	3108.89	0.00	
9925.00†	90.280	91.950	6979.16	3813.38	2553.53	3208.83	0.00	
10025.00†	90.280	91.950	6978.68	3908.00	2550.13	3308.77	0.00	
10125.00†	90.280	91.950	6978.19	4002.62	2546.73	3408.71	0.00	
10225.00†	90.280	91.950	6977.70	4097.24	2543.33	3508.65	0.00	
10325.00†	90.280	91.950	6977.21	4191.86	2539.92	3608.59	0.00	
10412.47	90.280	91.950	6976.78	4274.62	2536.95	3696.01	0.00	End of Tangent
10425.00†	90.280	91.699	6976.72	4286.48	2536.55	3708.53	2.00	
10525.00†	90.280	89.699	6976.23	4381.78	2535.33	3808.52	2.00	
10551.37	90.280	89.172	6976.10	4407.08	2535.59	3834.89	2.00	End of 3D Arc
10625.00†	90.280	89.172	6975.74	4477.82	2536.65	3908.51	0.00	
10725.00†	90.280	89.172	6975.25	4573.90	2538.10	4008.50	0.00	
10825.00†	90.280	89.172	6974.76	4669.97	2539.54	4108.49	0.00	
10925.00†	90.280	89.172	6974.27	4766.05	2540.99	4208.48	0.00	
11025.00†	90.280	89.172	6973.78	4862.12	2542.43	4308.46	0.00	
11125.00†	90.280	89.172	6973.29	4958.20	2543.88	4408.45	0.00	
11225.00†	90.280	89.172	6972.81	5054.27	2545.32	4508.44	0.00	



Planned Wellpath Report

TROUDT 1N-23B-M PWP (REV-A.0)

Page 6 of 8



REFERENCE WELLPATH IDENTIFICATION			
Operator	SRC ENERGY	Slot	SLOT#04 TROUDT 1N-23B-M (760'FNL & 1640'FWL, SEC.27)
Area	COLORADO	Well	TROUDT 1N-23B-M
Field	WELD COUNTY (NAD83,TRUE NORTH)	Wellbore	TROUDT 1N-23B-M PWB
Facility	SEC.27-T06N-R66W		

WELLPATH DATA (162 stations) † = interpolated/extrapolated station								
MD [ft]	Inclination [°]	Azimuth [°]	TVD [ft]	Vert Sect [ft]	North [ft]	East [ft]	DLS [°/100ft]	Comments
11325.00†	90.280	89.172	6972.32	5150.35	2546.77	4608.43	0.00	
11425.00†	90.280	89.172	6971.83	5246.43	2548.21	4708.42	0.00	
11525.00†	90.280	89.172	6971.34	5342.50	2549.66	4808.41	0.00	
11625.00†	90.280	89.172	6970.85	5438.58	2551.11	4908.39	0.00	
11725.00†	90.280	89.172	6970.36	5534.65	2552.55	5008.38	0.00	
11825.00†	90.280	89.172	6969.87	5630.73	2554.00	5108.37	0.00	
11925.00†	90.280	89.172	6969.38	5726.80	2555.44	5208.36	0.00	
12025.00†	90.280	89.172	6968.89	5822.88	2556.89	5308.35	0.00	
12125.00†	90.280	89.172	6968.40	5918.95	2558.33	5408.34	0.00	
12225.00†	90.280	89.172	6967.91	6015.03	2559.78	5508.32	0.00	
12325.00†	90.280	89.172	6967.42	6111.10	2561.22	5608.31	0.00	
12425.00†	90.280	89.172	6966.93	6207.18	2562.67	5708.30	0.00	
12525.00†	90.280	89.172	6966.44	6303.26	2564.11	5808.29	0.00	
12625.00†	90.280	89.172	6965.95	6399.33	2565.56	5908.28	0.00	
12725.00†	90.280	89.172	6965.46	6495.41	2567.00	6008.27	0.00	
12825.00†	90.280	89.172	6964.97	6591.48	2568.45	6108.25	0.00	
12925.00†	90.280	89.172	6964.48	6687.56	2569.89	6208.24	0.00	
13025.00†	90.280	89.172	6963.99	6783.63	2571.34	6308.23	0.00	
13125.00†	90.280	89.172	6963.50	6879.71	2572.79	6408.22	0.00	
13225.00†	90.280	89.172	6963.01	6975.78	2574.23	6508.21	0.00	
13325.00†	90.280	89.172	6962.52	7071.86	2575.68	6608.20	0.00	
13425.00†	90.280	89.172	6962.04	7167.93	2577.12	6708.18	0.00	
13525.00†	90.280	89.172	6961.55	7264.01	2578.57	6808.17	0.00	
13625.00†	90.280	89.172	6961.06	7360.08	2580.01	6908.16	0.00	
13725.00†	90.280	89.172	6960.57	7456.16	2581.46	7008.15	0.00	
13825.00†	90.280	89.172	6960.08	7552.24	2582.90	7108.14	0.00	
13925.00†	90.280	89.172	6959.59	7648.31	2584.35	7208.13	0.00	
14025.00†	90.280	89.172	6959.10	7744.39	2585.79	7308.11	0.00	
14125.00†	90.280	89.172	6958.61	7840.46	2587.24	7408.10	0.00	
14225.00†	90.280	89.172	6958.12	7936.54	2588.68	7508.09	0.00	



Planned Wellpath Report

TROUDT 1N-23B-M PWP (REV-A.0)

Page 7 of 8



REFERENCE WELLPATH IDENTIFICATION			
Operator	SRC ENERGY	Slot	SLOT#04 TROUDT 1N-23B-M (760'FNL & 1640'FWL, SEC.27)
Area	COLORADO	Well	TROUDT 1N-23B-M
Field	WELD COUNTY (NAD83,TRUE NORTH)	Wellbore	TROUDT 1N-23B-M PWB
Facility	SEC.27-T06N-R66W		

WELLPATH DATA (162 stations) † = interpolated/extrapolated station								
MD [ft]	Inclination [°]	Azimuth [°]	TVD [ft]	Vert Sect [ft]	North [ft]	East [ft]	DLS [°/100ft]	Comments
14325.00†	90.280	89.172	6957.63	8032.61	2590.13	7608.08	0.00	
14425.00†	90.280	89.172	6957.14	8128.69	2591.57	7708.07	0.00	
14525.00†	90.280	89.172	6956.65	8224.76	2593.02	7808.06	0.00	
14625.00†	90.280	89.172	6956.16	8320.84	2594.47	7908.04	0.00	
14725.00†	90.280	89.172	6955.67	8416.91	2595.91	8008.03	0.00	
14825.00†	90.280	89.172	6955.18	8512.99	2597.36	8108.02	0.00	
14925.00†	90.280	89.172	6954.69	8609.07	2598.80	8208.01	0.00	
15025.00†	90.280	89.172	6954.20	8705.14	2600.25	8308.00	0.00	
15125.00†	90.280	89.172	6953.71	8801.22	2601.69	8407.99	0.00	
15225.00†	90.280	89.172	6953.22	8897.29	2603.14	8507.97	0.00	
15264.89†	90.280	89.172	6953.03	8935.61	2603.71	8547.86	0.00	
15270.54	90.280	89.172	6953.00 ²	8941.05	2603.80	8553.51	0.00	End of Tangent

HOLE & CASING SECTIONS - Ref Wellbore: TROUDT 1N-23B-M PWB Ref Wellpath: TROUDT 1N-23B-M PWP (REV-A.0)									
String/Diameter	Start MD [ft]	End MD [ft]	Interval [ft]	Start TVD [ft]	End TVD [ft]	Start N/S [ft]	Start E/W [ft]	End N/S [ft]	End E/W [ft]
13.5in Open Hole	25.00	1750.00	1725.00	25.00	1693.56	0.00	0.00	340.60	78.13
9.625in Casing Surface	25.00	1750.00	1725.00	25.00	1693.56	0.00	0.00	340.60	78.13
8.5in Open Hole	1750.00	15270.54	13520.54	1693.56	6953.00	340.60	78.13	2603.80	8553.51



Planned Wellpath Report

TROUDT 1N-23B-M PWP (REV-A.0)

Page 8 of 8



REFERENCE WELLPATH IDENTIFICATION			
Operator	SRC ENERGY	Slot	SLOT#04 TROUDT 1N-23B-M (760'FNL & 1640'FWL, SEC.27)
Area	COLORADO	Well	TROUDT 1N-23B-M
Field	WELD COUNTY (NAD83,TRUE NORTH)	Wellbore	TROUDT 1N-23B-M PWB
Facility	SEC.27-T06N-R66W		

TARGETS									
Name	MD [ft]	TVD [ft]	North [ft]	East [ft]	Grid East [US ft]	Grid North [US ft]	Latitude	Longitude	Shape
SEC.28-T06N-R66W		0.00	0.00	-45.08	3203773.74	1412932.71	40°27'52.531"N	104°46'03.497"W	polygon
SEC.29-T06N-R66W EAST HALF		0.00	0.00	-45.08	3203773.74	1412932.71	40°27'52.531"N	104°46'03.497"W	polygon
SEC.22-T06N-R66W		1.00	1412.72	-8054.22	3195753.51	1414279.17	40°28'06.478"N	104°47'47.123"W	polygon
SEC.23-T06N-R66W		1.00	4231.29	-1912.40	3201871.60	1417148.27	40°28'34.342"N	104°46'27.660"W	polygon
SEC.26-T06N-R66W		1.00	-4763.03	630.11	3204488.23	1408175.60	40°27'05.465"N	104°45'54.763"W	polygon
SEC.27-T06N-R66W		1.00	-4763.03	630.11	3204488.23	1408175.60	40°27'05.465"N	104°45'54.763"W	polygon
2) TROUDT 1N-23B-M BHL ON PLAT (1876'FSL & 510'FEL, SEC.23)	15270.54	6953.00	2603.80	8553.51	3212350.20	1415607.35	40°28'18.246"N	104°44'12.239"W	circle
1) TROUDT 1N-23B-M TOP OF PROD (1869'FSL & 2522'FEL, SEC.22)	7912.47	6989.00	2622.01	1197.48	3204994.56	1415564.80	40°28'18.440"N	104°45'47.419"W	circle

SURVEY PROGRAM - Ref Wellbore: TROUDT 1N-23B-M PWB Ref Wellpath: TROUDT 1N-23B-M PWP (REV-A.0)				
Start MD [ft]	End MD [ft]	Positional Uncertainty Model	Log Name/Comment	Wellbore
25.00	1750.00	Custom BHI NaviTrak (Standard Rotating+Axial Corr) (Rockies 0.03Gt model)		TROUDT 1N-23B-M PWB
1750.00	15270.54	Custom BHI AutoTrak Curve (IFR1, Short) (Rockies 0.03Gt model)		TROUDT 1N-23B-M PWB