

LEGEND:

- └─ = 90° SYMBOL  
● = PROPOSED WELLHEAD.  
◇ = ENTRY TARGET.  
□ = MID-LATERAL TARGET.  
○ = TARGET BOTTOM HOLE.  
▲ = SECTION CORNERS LOCATED. (NAD 83)

2016 Alum. Cap,  
#28285, 0.3' High  
Lat: 40.247275°  
Long: 104.452142°  
SP NAD 83  
(CO. NORTH)  
N: 1334652.26  
E: 3292489.74

2016 Alum. Cap,  
#28285, 0.3' High  
Lat: 40.247256°  
Long: 104.433400°  
SP NAD 83  
(CO. NORTH)  
N: 1334707.24  
E: 3297721.31

2016 Alum. Cap,  
#28285, 0.3' High  
Lat: 40.247300°  
Long: 104.414669°  
SP NAD 83  
(CO. NORTH)  
N: 1334787.17  
E: 3302948.72

BONANZA CREEK ENERGY  
OPERATING COMPANY, LLC

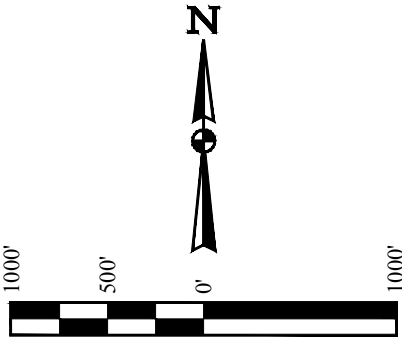
LONGHORN V41-10-9XRLNB  
NE 1/4 NE 1/4, SECTION 10, T3N, R63W, 6th P.M.  
WELD COUNTY, COLORADO

BASIS OF BEARINGS

BASIS OF BEARINGS IS A G.P.S. OBSERVATION

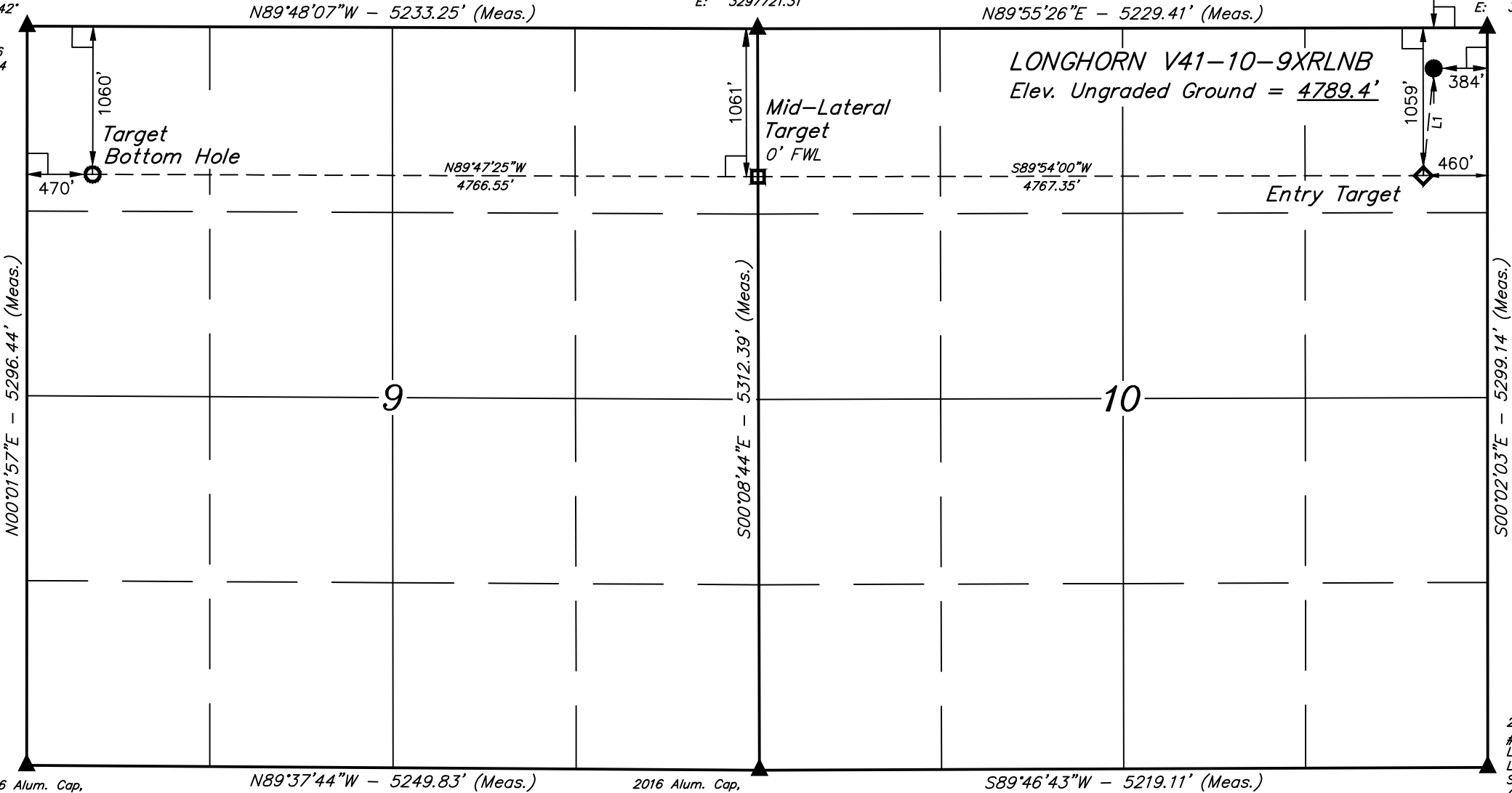
BASIS OF ELEVATION

SPOT ELEVATION LOCATED AT THE NORTHEAST CORNER OF  
SECTION 24, T5N, R62W, 6th P.M. TAKEN FROM THE POINT OF  
ROCKS, QUADRANGLE, COLORADO, WELD COUNTY, 7.5 MINUTE  
QUAD (TOPOGRAPHIC MAP) PUBLISHED BY THE UNITED STATES  
DEPARTMENT OF THE INTERIOR, GEOLOGICAL SURVEY. SAID  
ELEVATION IS MARKED AS BEING 4530 FEET.



LINE TABLE		
LINE	DIRECTION	LENGTH
L1	S05°36'33"W	772.14'

LONGHORN V41-10-9XRLNB  
Elev. Ungraded Ground = 4789.4'



2016 Alum. Cap,  
#28285, 0.3' High  
Lat: 40.232739°  
Long: 104.452114°  
SP NAD 83  
(CO. NORTH)  
N: 1329357.70  
E: 3292560.67

2016 Alum. Cap,  
#28285, 0.3' High  
Lat: 40.232675°  
Long: 104.433314°  
SP NAD 83  
(CO. NORTH)  
N: 1329396.98  
E: 3297808.95

2016 Alum. Cap,  
#28285, 0.3' High  
Lat: 40.232758°  
Long: 104.414628°  
SP NAD 83  
(CO. NORTH)  
N: 1329489.99  
E: 3303025.85

CERTIFICATE OF ACCURACY  
THIS IS TO CERTIFY THAT THE ABOVE PLAT WAS PREPARED FROM FIELD  
NOTES OF ACTUAL SURVEYS MADE IN MY PRESENCE OR UNDER MY SUPERVISION  
AND THAT THE SAME ARE TRUE AND CORRECT TO THE BEST OF MY  
KNOWLEDGE AND BELIEF.

REGISTERED LAND SURVEYOR  
REGISTRATION NO. 28285  
STATE OF COLORADO  
11-06-17

REV: 4 11-06-17 C.IVIE (ENTRY TARGET MOVE)

PDOP = 1.2

NAD 83 (SURFACE LOCATION)	NAD 83 (ENTRY TARGET)	NAD 83 (MID-LATERAL TARGET)	NAD 83 (TARGET BOTTOM HOLE)
LATITUDE = 40°14'47.40" (40.246500)	LATITUDE = 40°14'39.80" (40.244390)	LATITUDE = 40°14'39.64" (40.244344)	LATITUDE = 40°14'39.71" (40.244364)
LONGITUDE = 104°24'57.76" (104.416044)	LONGITUDE = 104°24'58.71" (104.416309)	LONGITUDE = 104°26'00.18" (104.433383)	LONGITUDE = 104°27'01.63" (104.450453)
STATE PLANE NAD 83 (CO. NORTH)	STATE PLANE NAD 83 (CO. NORTH)	STATE PLANE NAD 83 (CO. NORTH)	STATE PLANE NAD 83 (CO. NORTH)
N: 1334490.75 E: 3302569.03	N: 1333721.53 E: 3302504.31	N: 1333646.66 E: 3297738.81	N: 1333597.57 E: 3292973.78



UELS, LLC  
Corporate Office \* 85 South 200 East  
Vernal, UT 84078 \* (435) 789-1017

SURVEYED BY	JAMES FRESHWATER	09-27-17	SCALE
DRAWN BY	L.C.S.	11-22-16	1" = 1000'

WELL LOCATION PLAT