



RADIAL CEMENT BOND
GAMMA RAY
CCL

Company	VERDAD OIL AND GAS CORP.	
Well	WARNER 01N-64W-17-1H	
Field	WATTENBERG	
County	WELD	
State	COLORADO	
Location:	API # :	Other Services
Permanent Datum	SEC 17 TWP 1N RGE 64W	Elevation
Log Measured From	GL KB 16'	K.B. 5099'
Drilling Measured From	KB	D.F. 5098'
		G.L. 5083'

Date	10-05-2017
Run Number	ONE
Depth Driller	17436'
Depth Logger	4637'
Bottom Logged Interval	4637'
Top Log Interval	SURFACE
Open Hole Size	8 3/4"
Type Fluid	OIL BASED MUD
Density / Viscosity	1
Max. Recorded Temp.	153
Estimated Cement Top	84'
Time Well Ready	NA
Time Logger on Bottom	NA
Equipment Number	W-062
Location	WINDSOR, CO
Recorded By	A. STEERMAN
Witnessed By	

Borehole Record				Tubing Record			
Run Number	Bit	From	To	Size	Weight	From	To
Casing Record	Size	Wgt/Ft	Top	Bottom			
Surface String							
Prot. String							
Production String							
Liner							

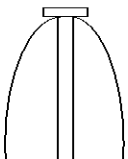
<<< Fold Here >>>

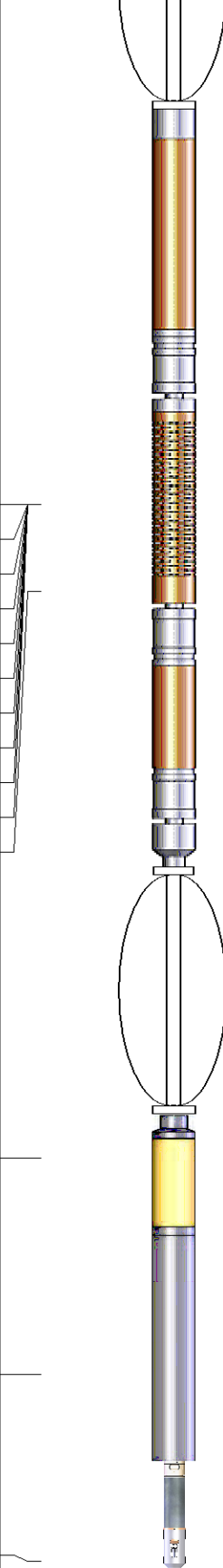
All interpretations are opinions based on inferences from electrical or other measurements and we cannot and do not guarantee the accuracy or correctness of any interpretation, and we shall not, except in the case of gross or willful negligence on our part, be liable or responsible for any loss, costs, damages, or expenses incurred or sustained by anyone resulting from any interpretation made by any of our officers, agents or employees. These interpretations are also subject to our general terms and conditions set out in our current Price Schedule.

Comments

RAN CBL TO VERIFY CEMENT BOND
WELL FILLED WITH OIL BASED MUD
COULDN'T FALL PAST 4637'

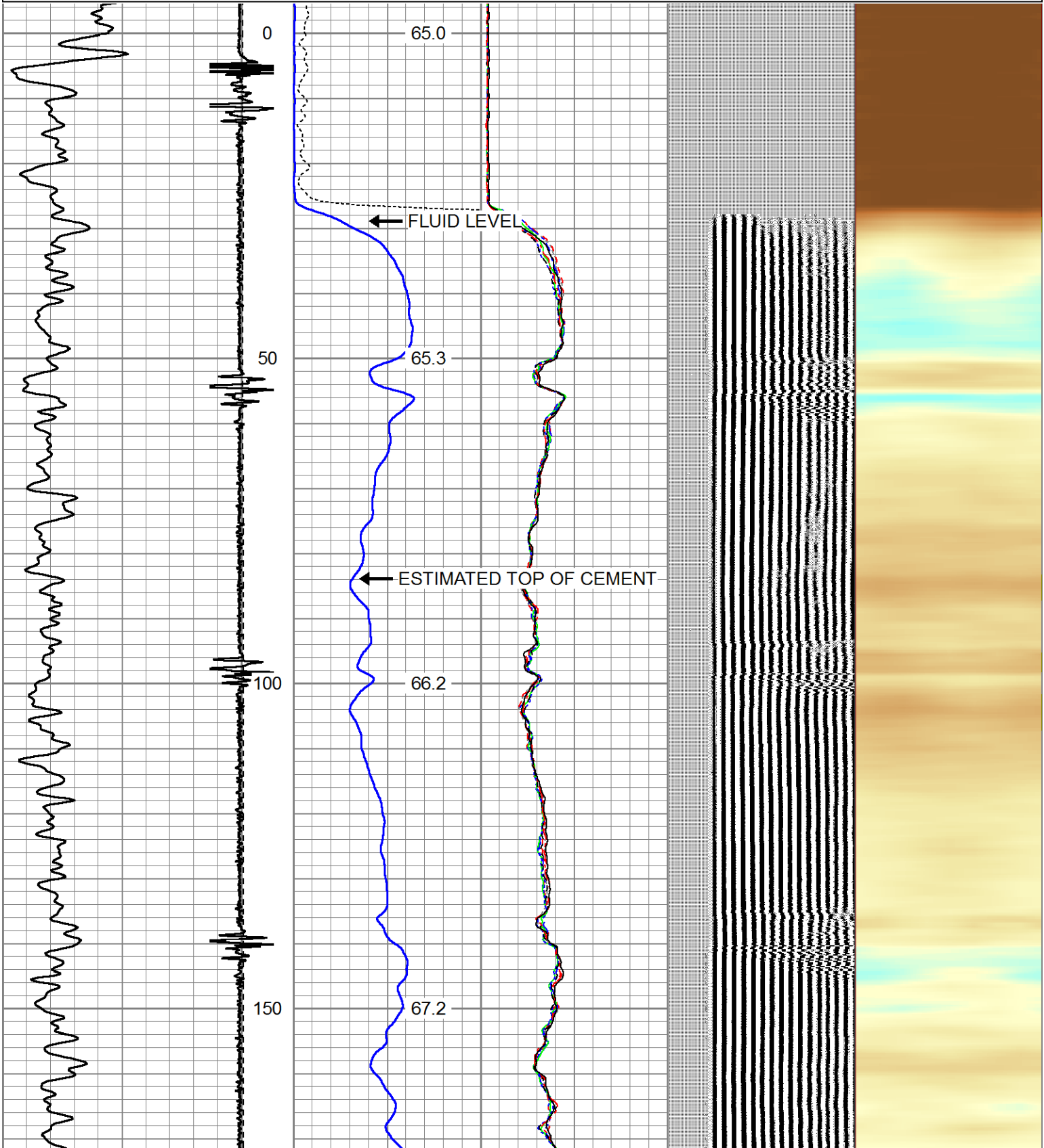
THANK YOU FOR USING CUTTERS WIRELINE

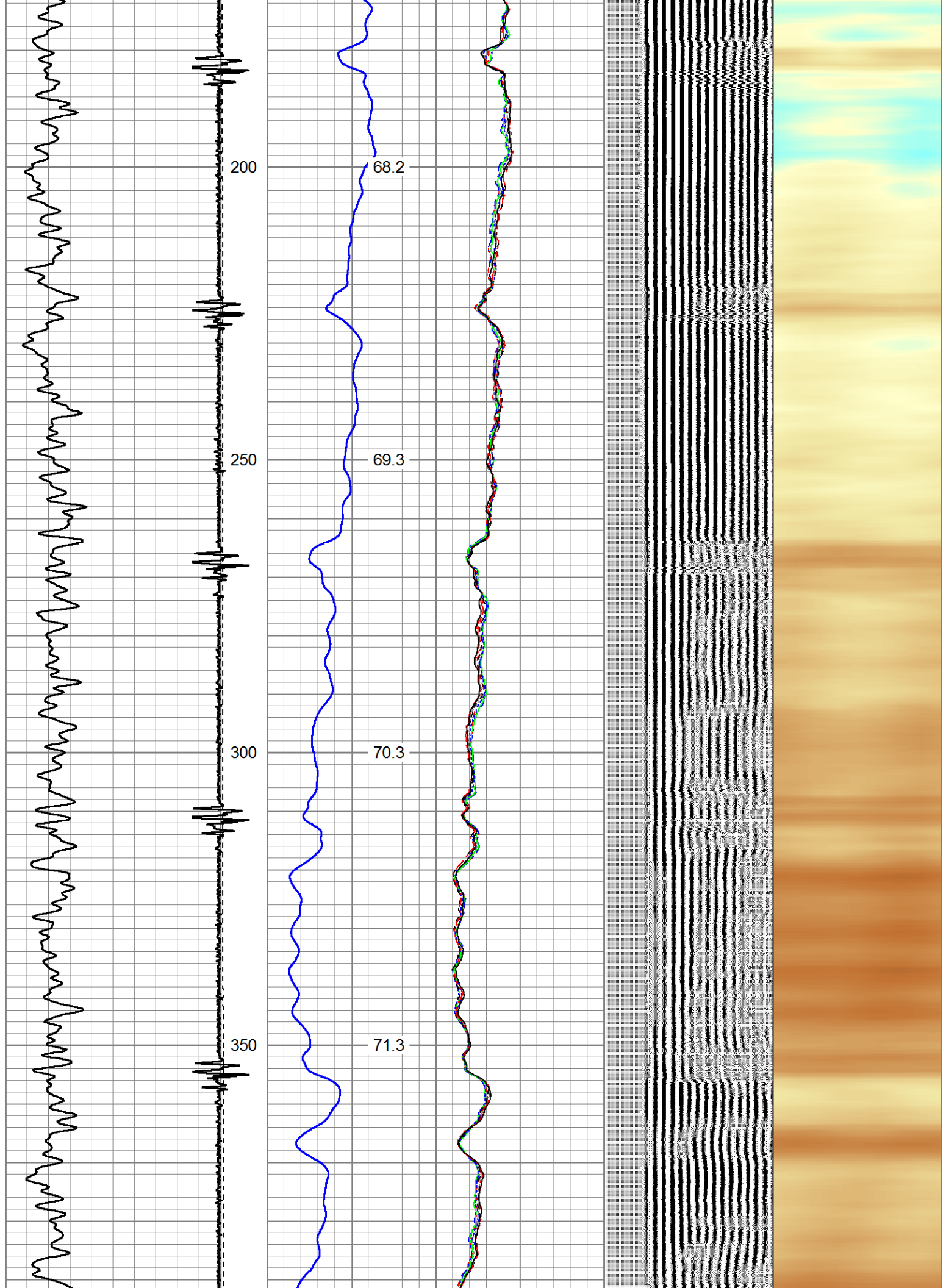
Sensor	Offset (ft)	Schematic	Description	Len (ft)	OD (in)	Wt (lb)
			Probe	2.88	2.75	20.00

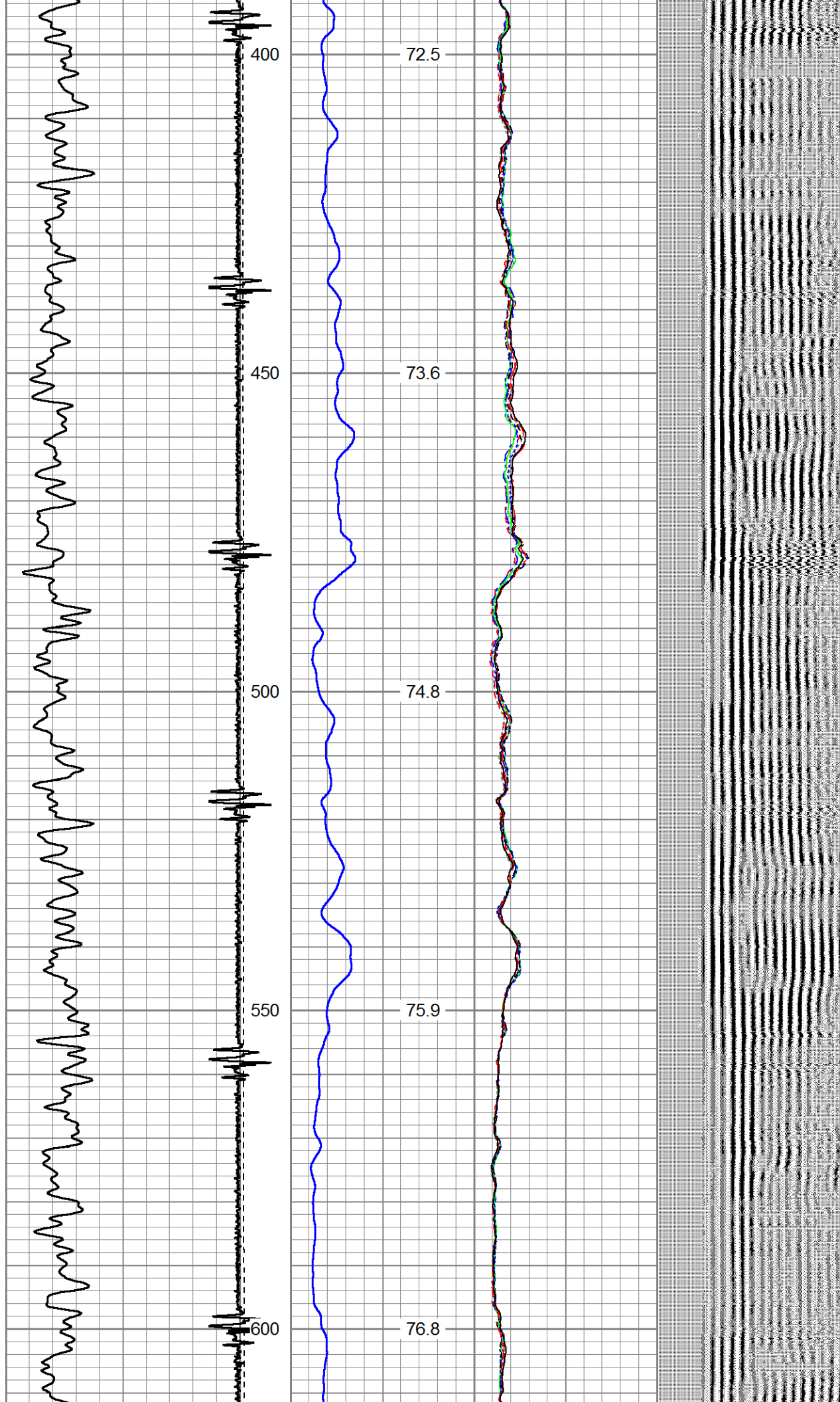
			Probe 2 3/4 Centralizer			
WVF3FT	12.31		RBT-Probe (060112_55) Probe 2.75" Radii Bond Tool	8.75	2.75	90.00
WVFCAL	12.31					
WVFS1	12.31					
WVFS2	12.31					
WVFS3	12.31					
WVFS4	12.31					
WVFS5	12.31					
WVFS6	12.31					
WVFS7	12.31					
WVFS8	12.31					
WVF5FT	11.31					
			Probe Probe 2 3/4 Centralizer	2.88	2.75	20.00
CCL	4.75					
			GR-Probe (060109) Probe 2.75" 4 Channel Pulse	4.00	2.75	30.00
GR	2.25					
			TEMP-1.375TEMP (060110) Temperature Tool	1.25	1.38	30.00
TEMP	0.08					
Dataset: warner 01n-64w-17-1h.db: field/well/run1/pass12 Total Length: 19.75 ft Total Weight: 190.00 lb O.D.: 2.75 in						

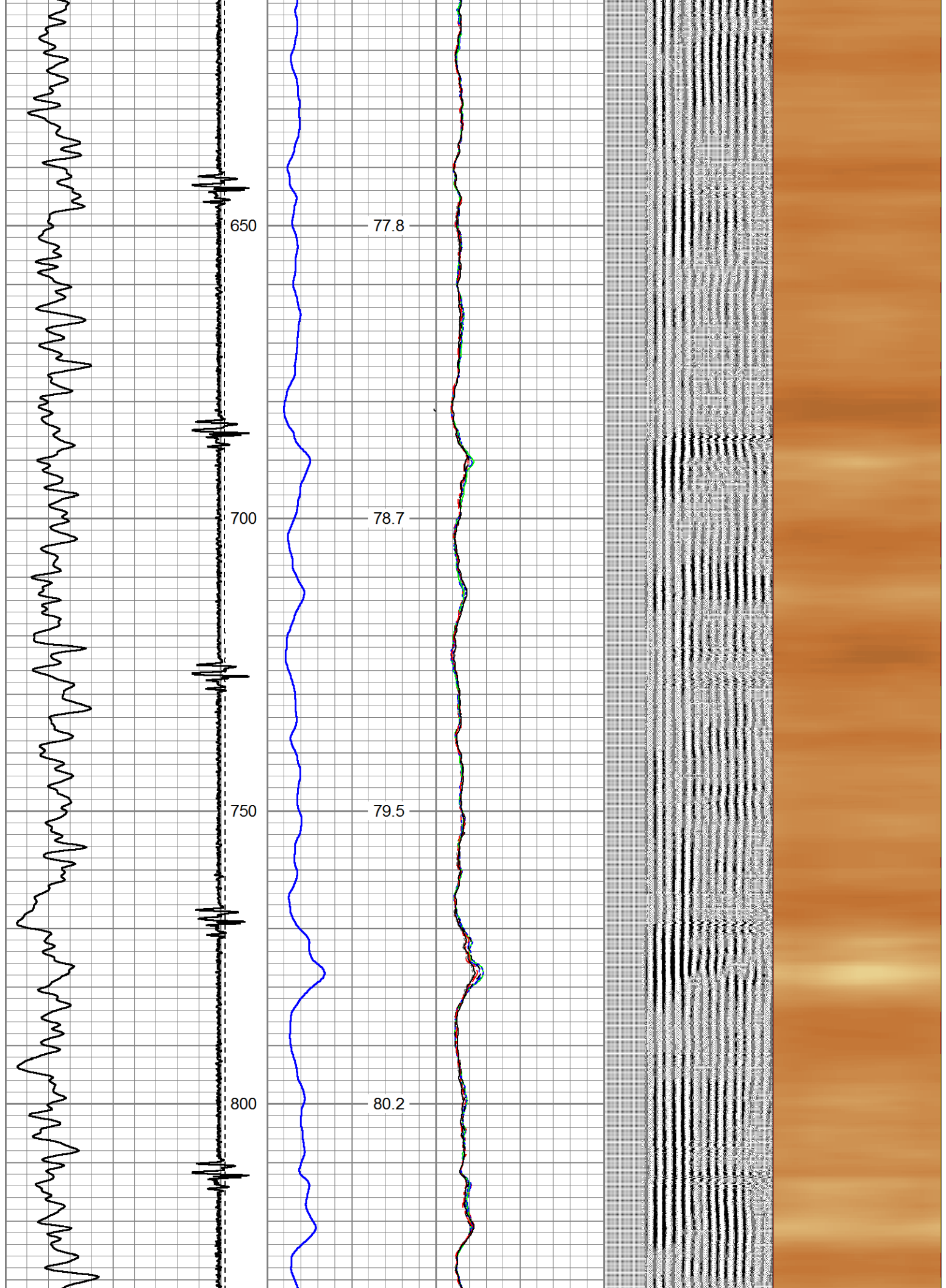
Database File: warner 01n-64w-17-1h.db
 Dataset Pathname: pass12
 Presentation Format: rbl55
 Dataset Creation: Thu Oct 05 12:28:37 2017 by Log 7.0 B1
 Charted by: Depth in Feet scaled 1:240

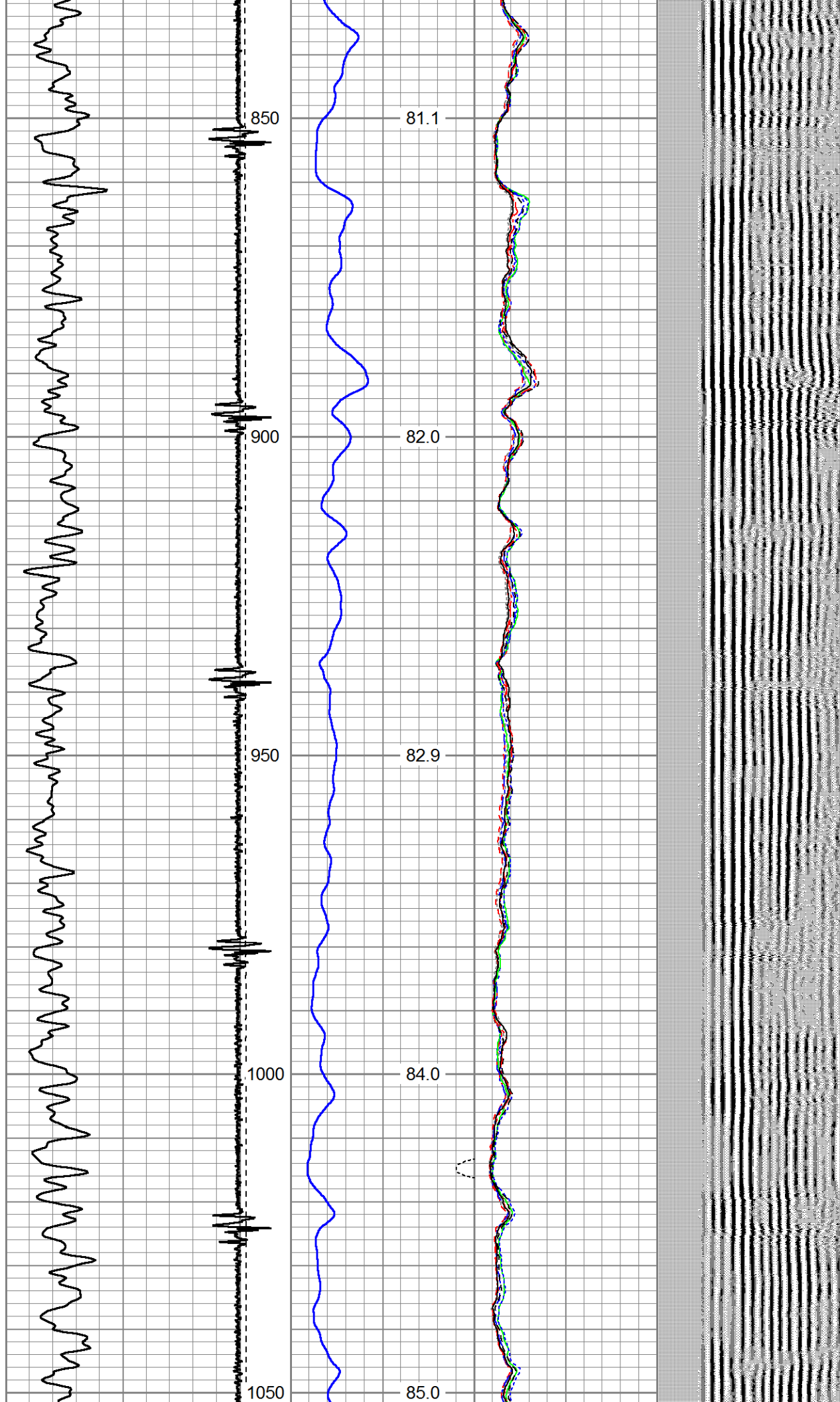
Charted by:		Depth in Feet scaled 1.240											
325	TT (usec)	225	LTEN	0	Amplitude (mV)	100	-5	AMPS2	150	200	VDL	1200	Cement Map
0	GR (GAPI)	250	(lb)	0	Amplified Amplitude		-5	AMPS3	150				
			CCL	000	(mV)	10	-5	AMPS4	150				
					TEMP		-5	AMPS5	150				
					(degF)		-5	AMPS6	150				
							-5	AMPS7	150				
							-5	AMPS8	150				
							-5	AMPS1	150				

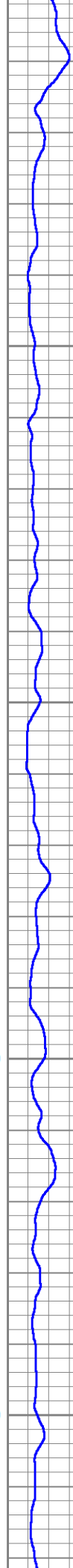
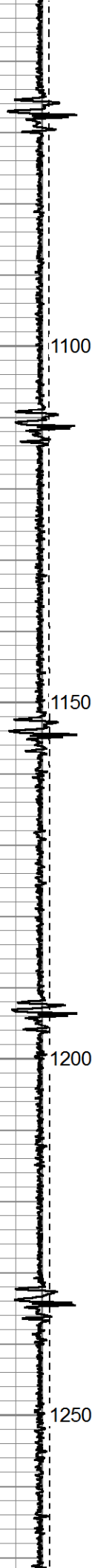
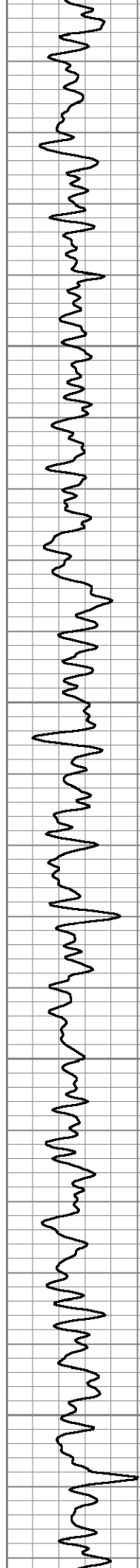










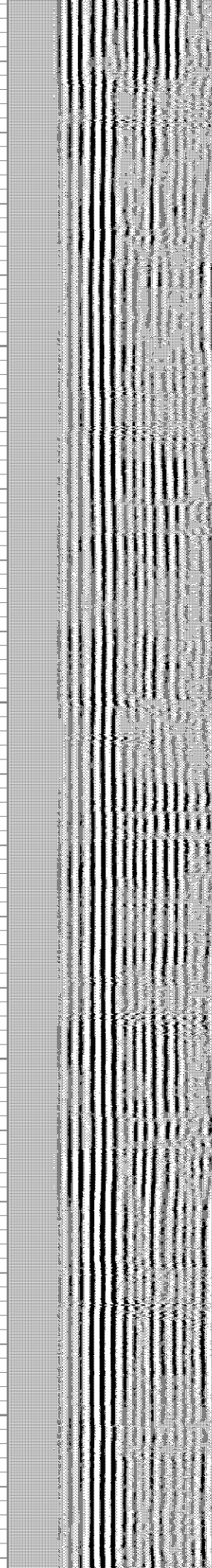
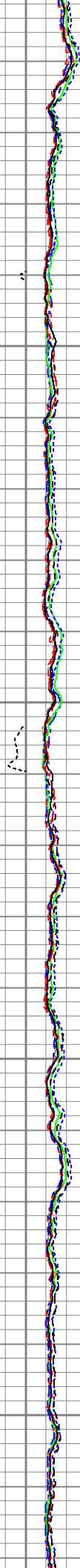


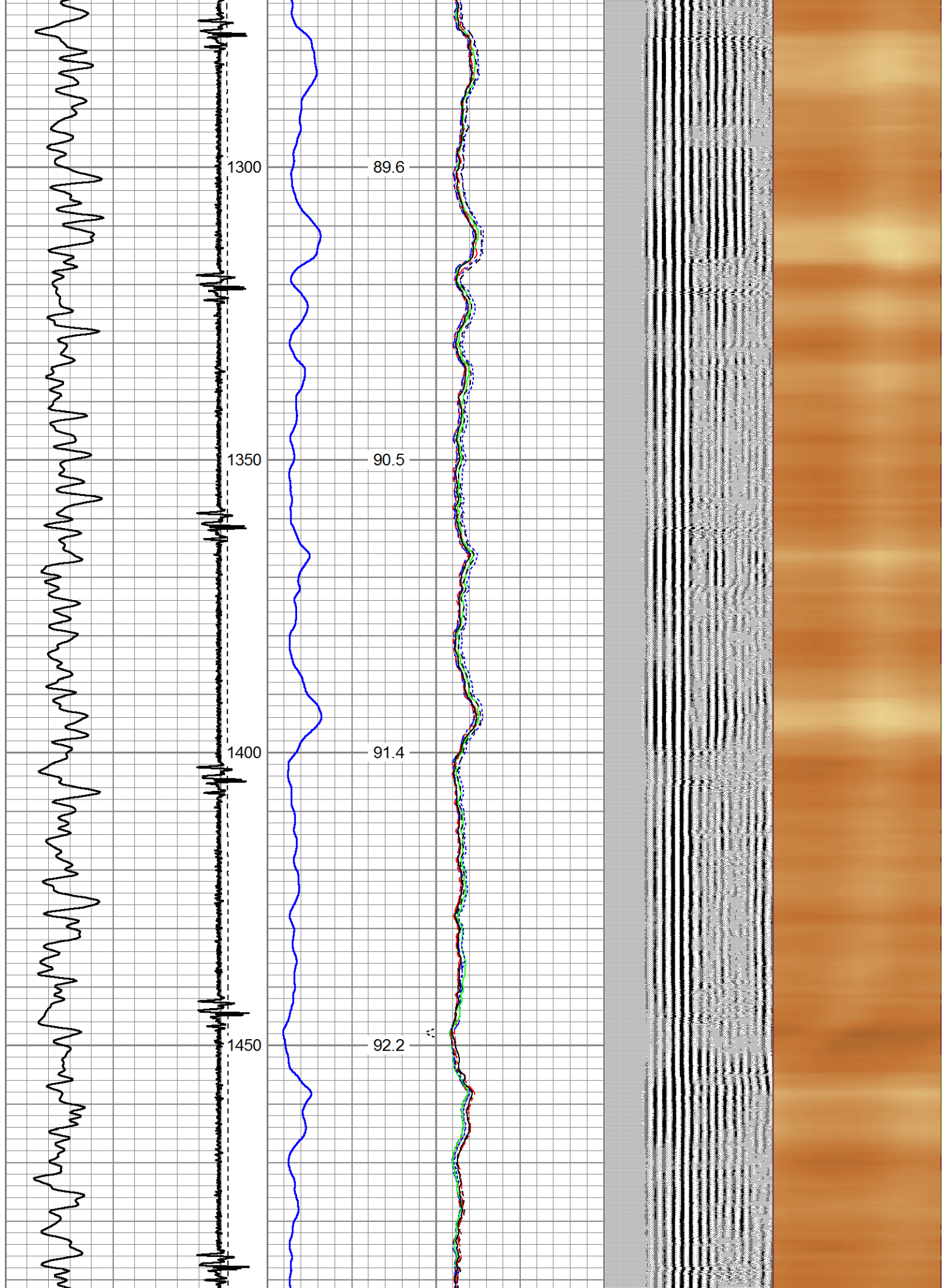
86.0

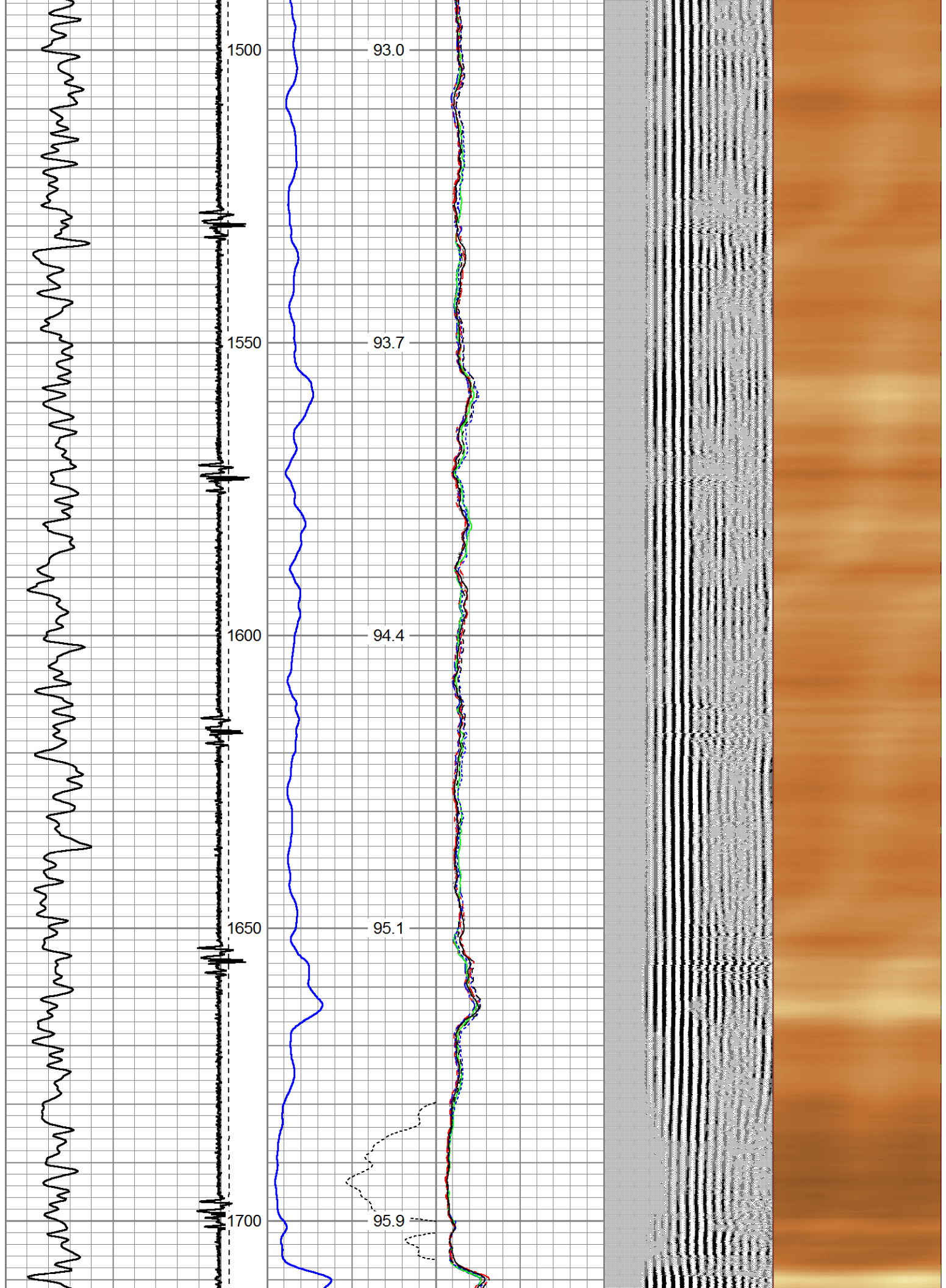
87.0

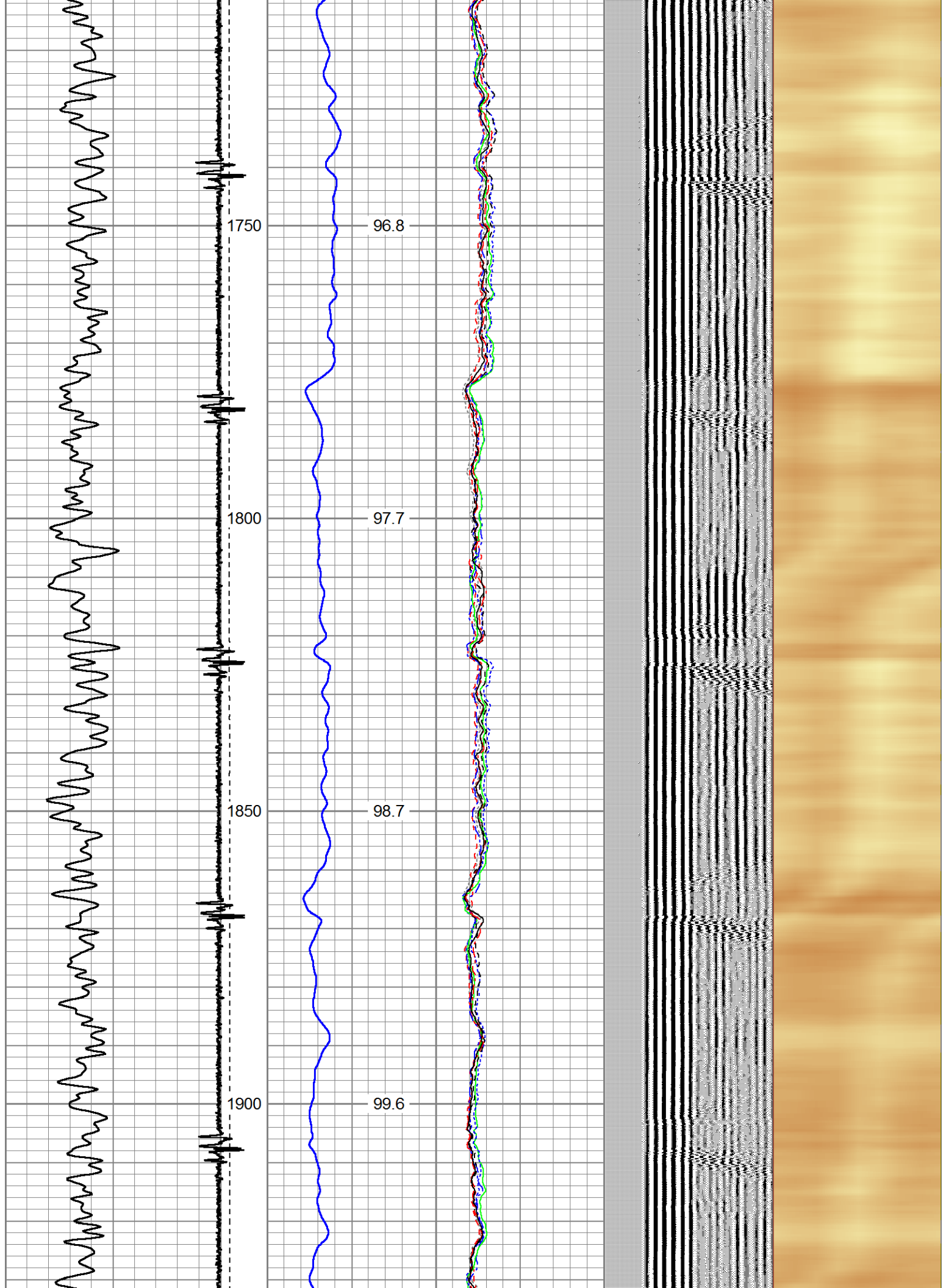
87.9

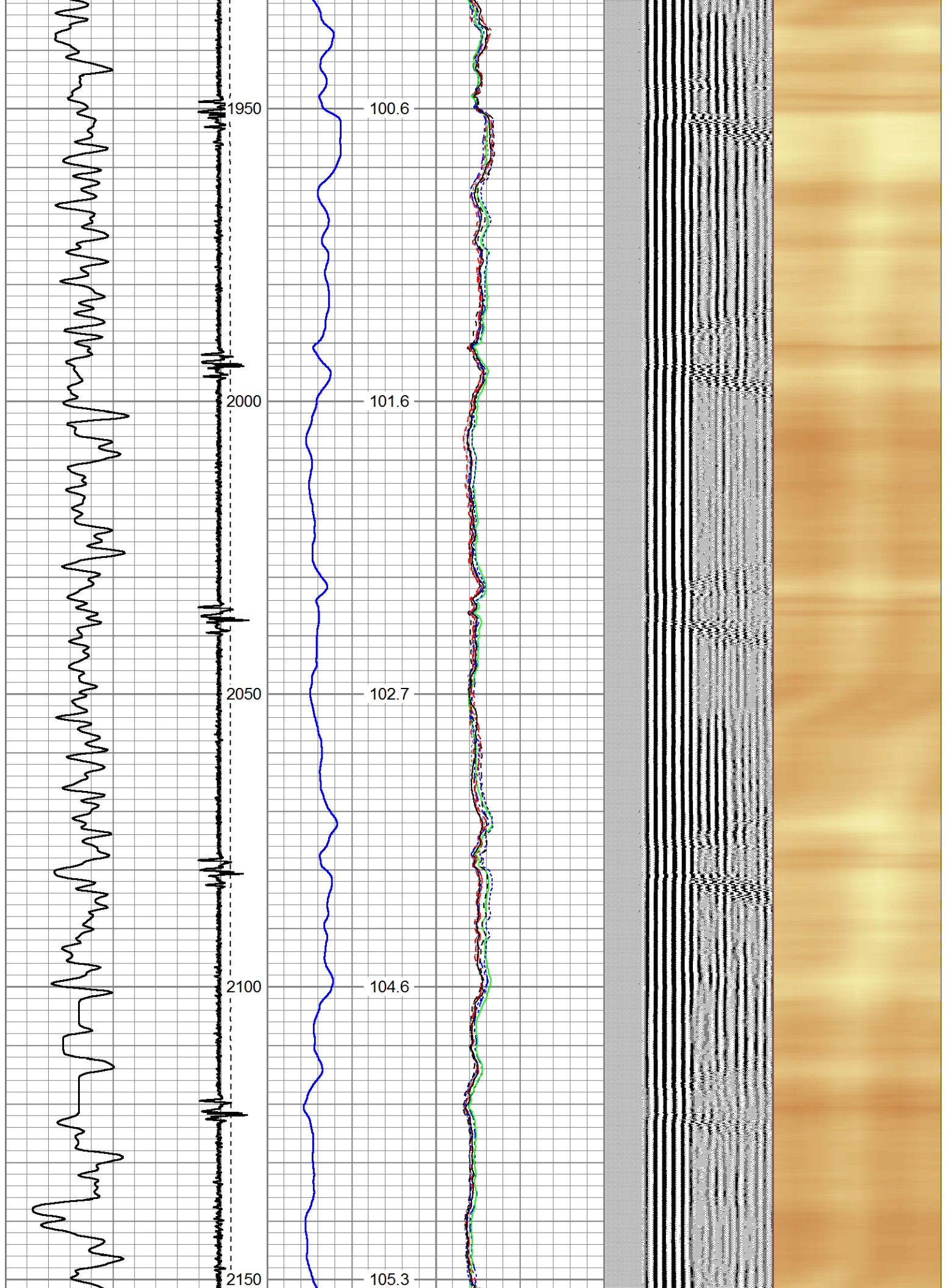
88.8

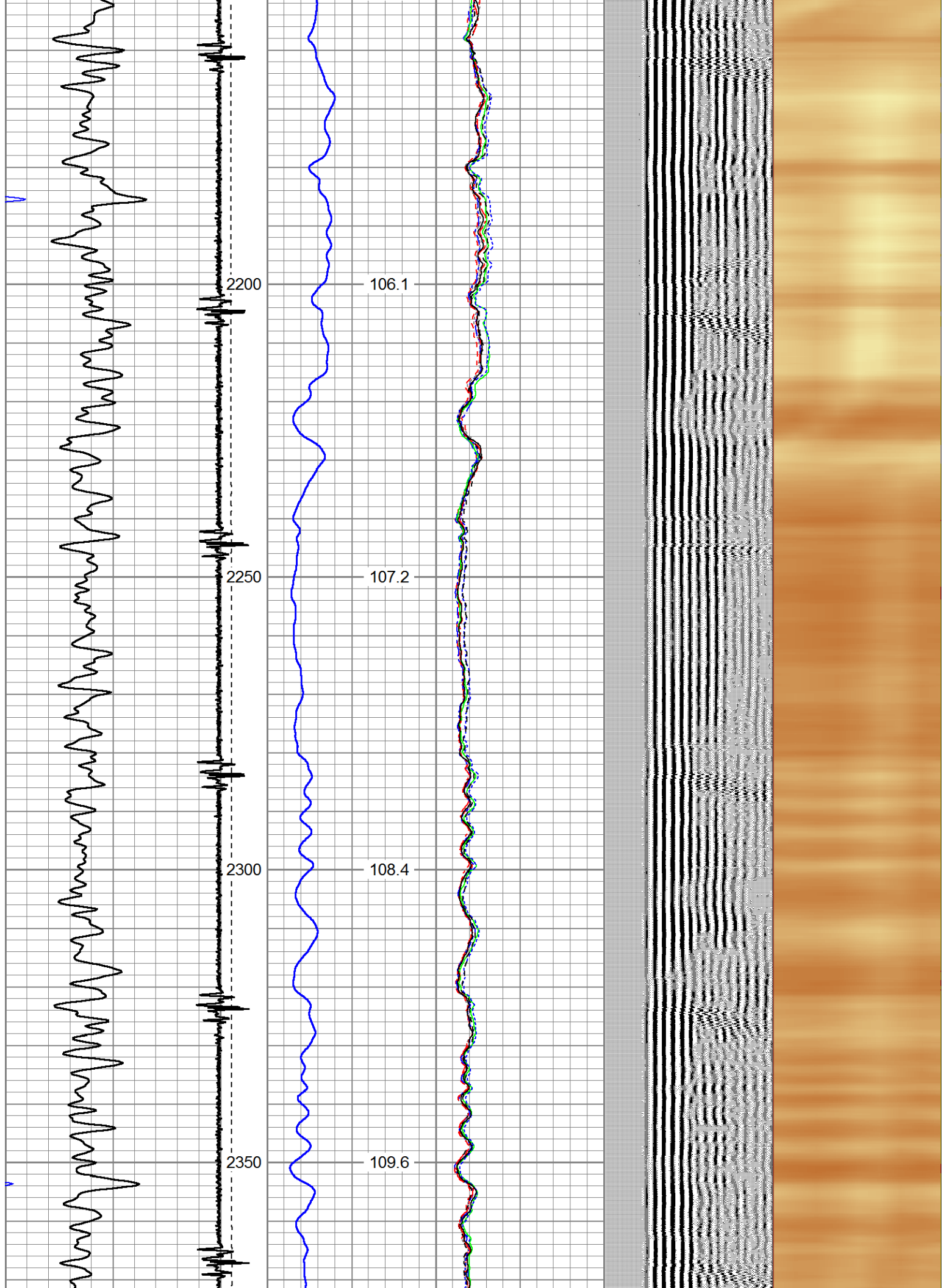


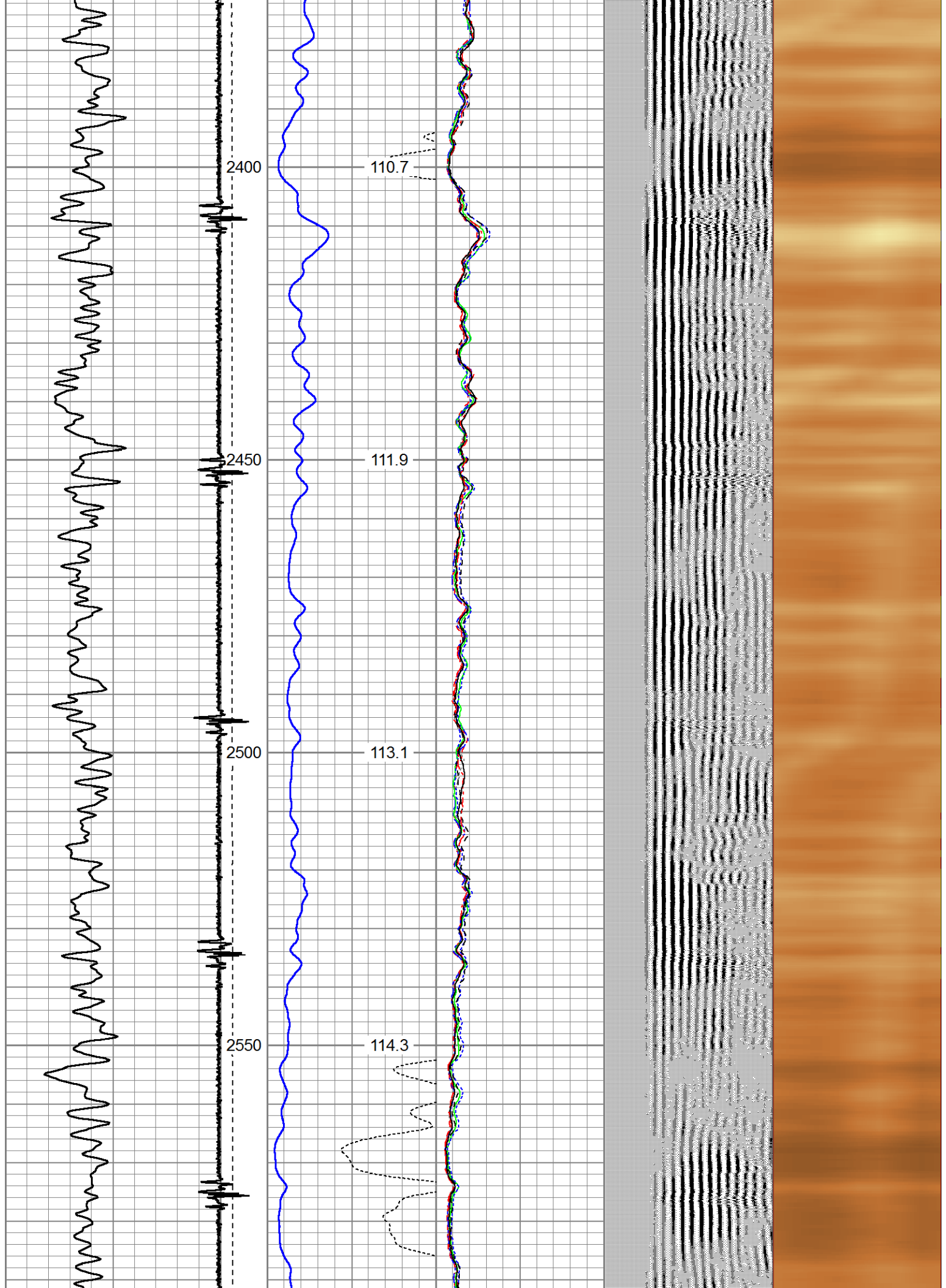


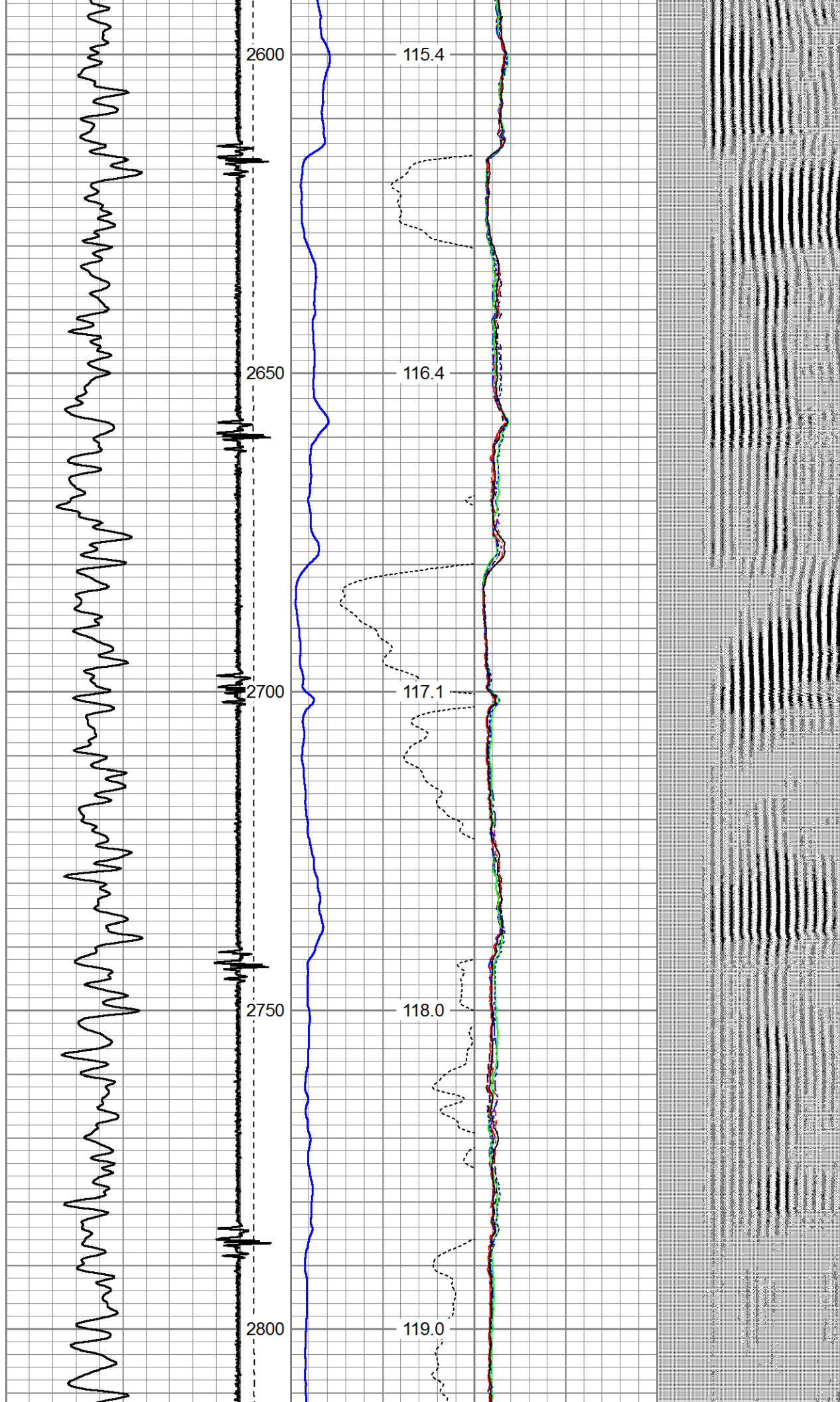


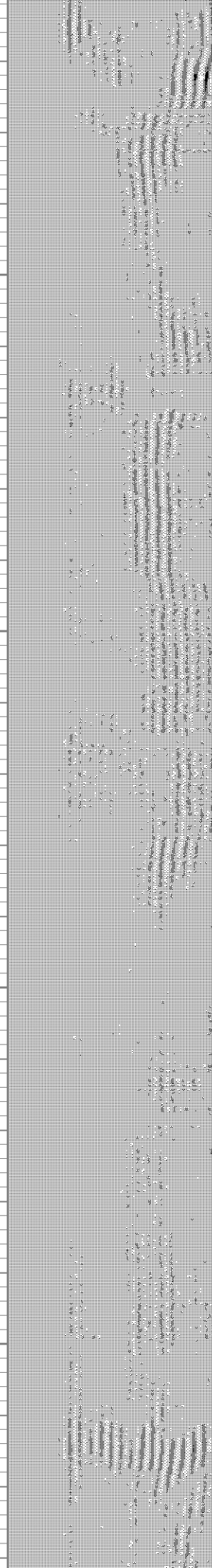
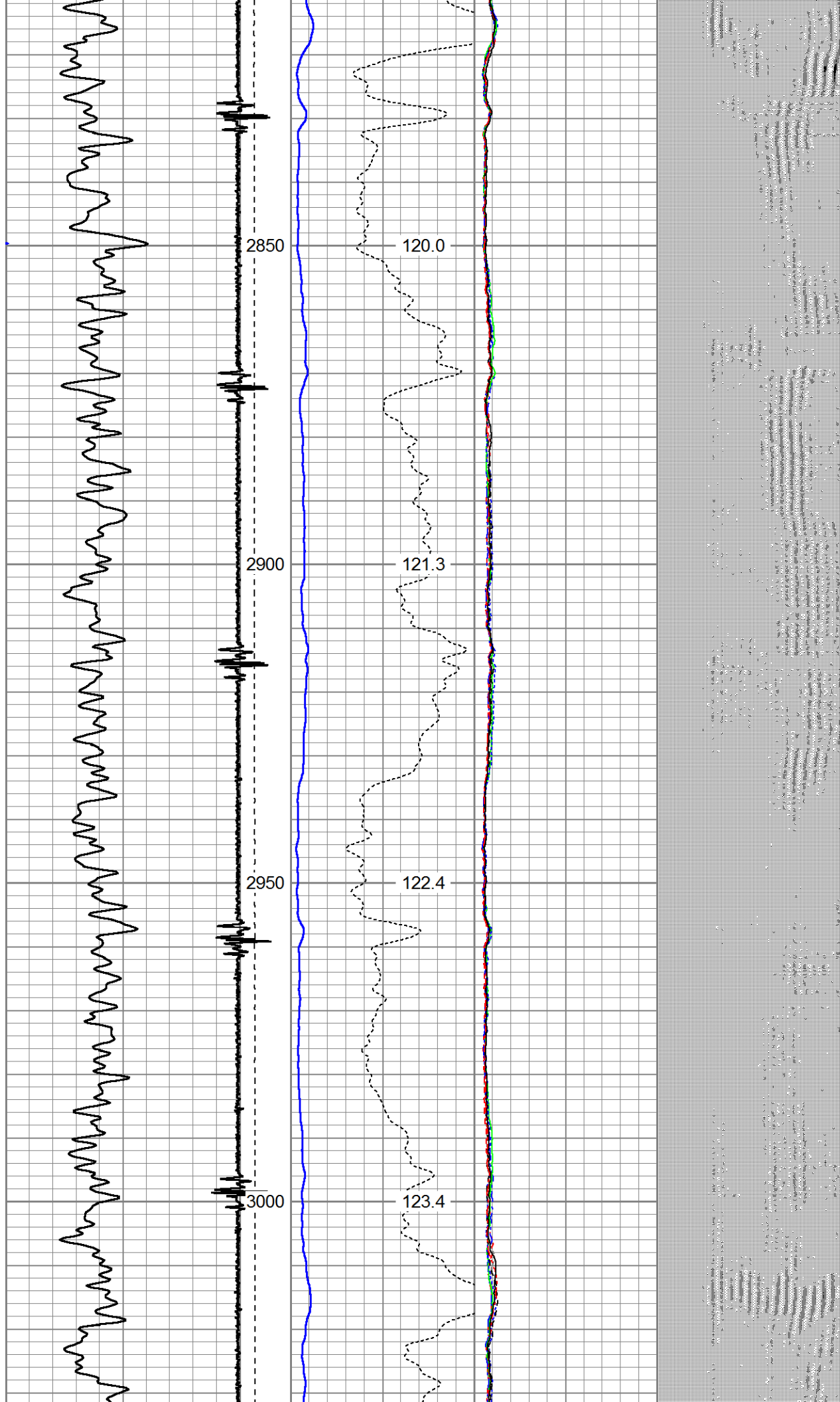


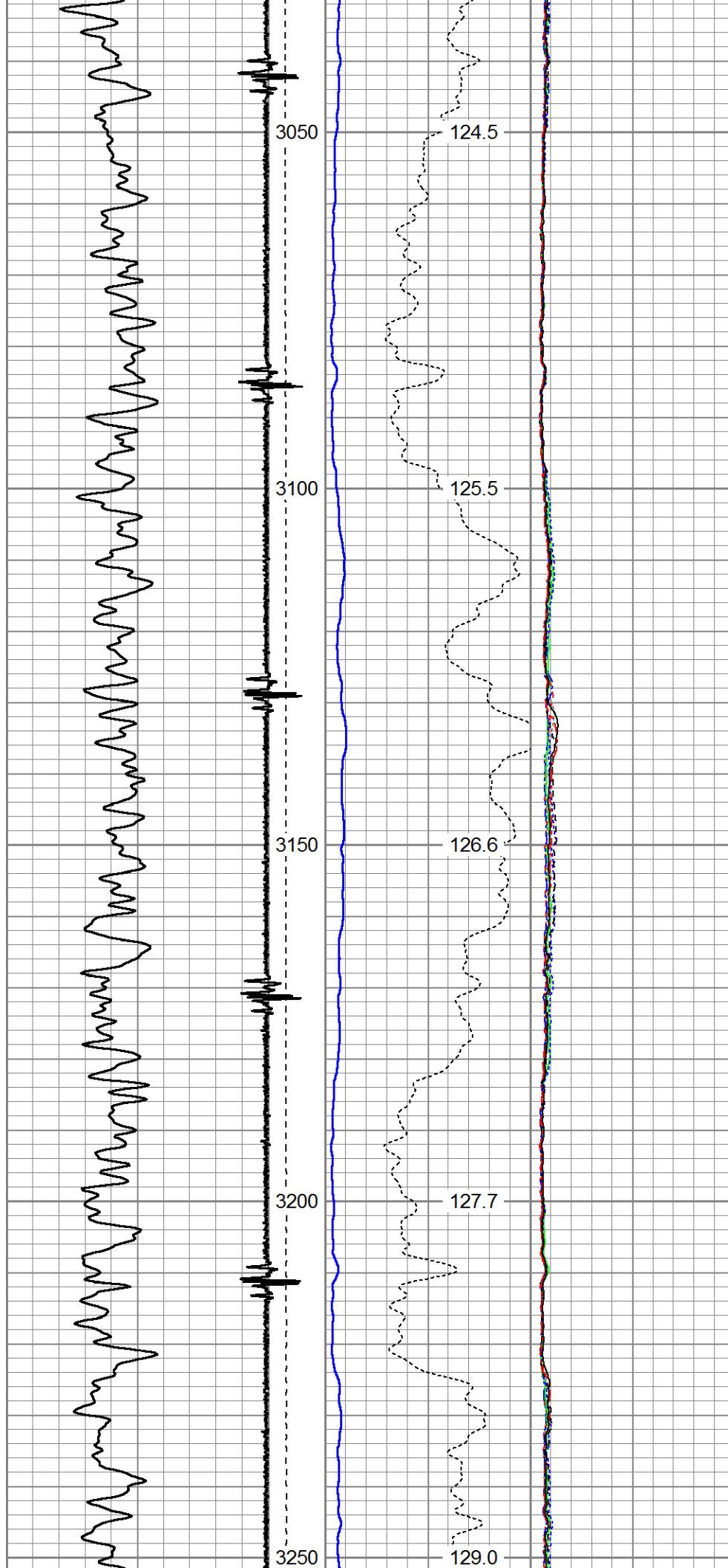


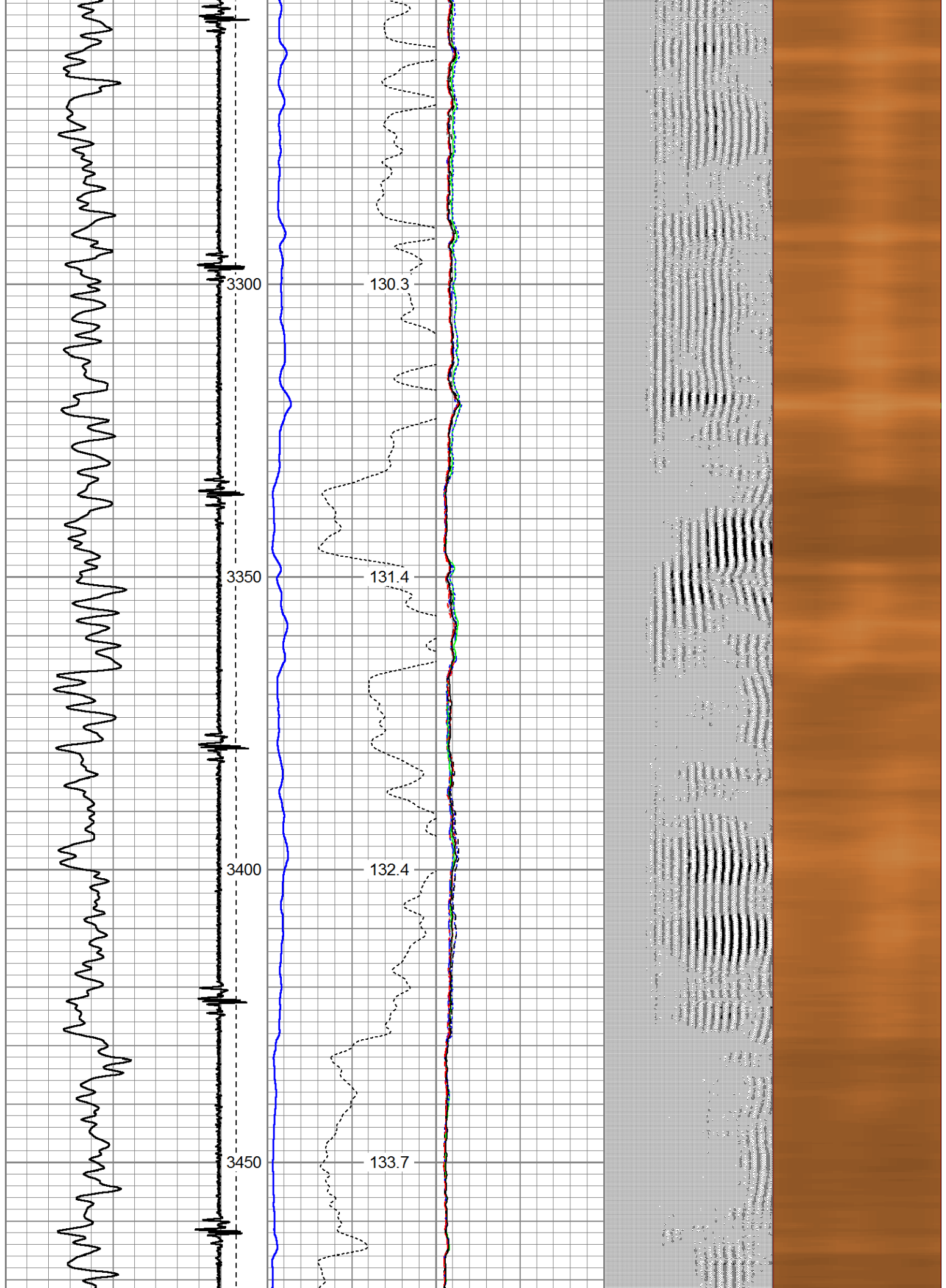


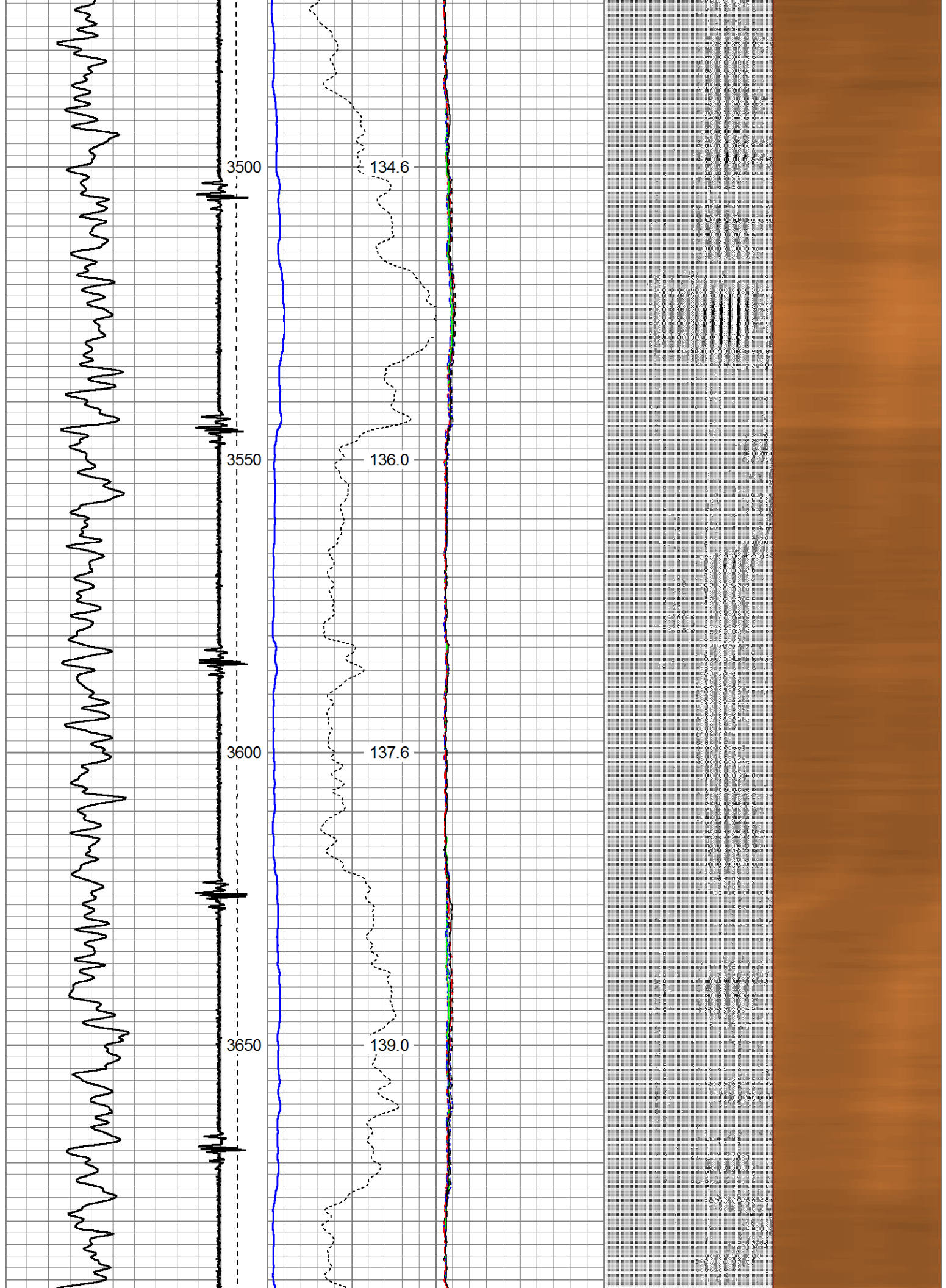


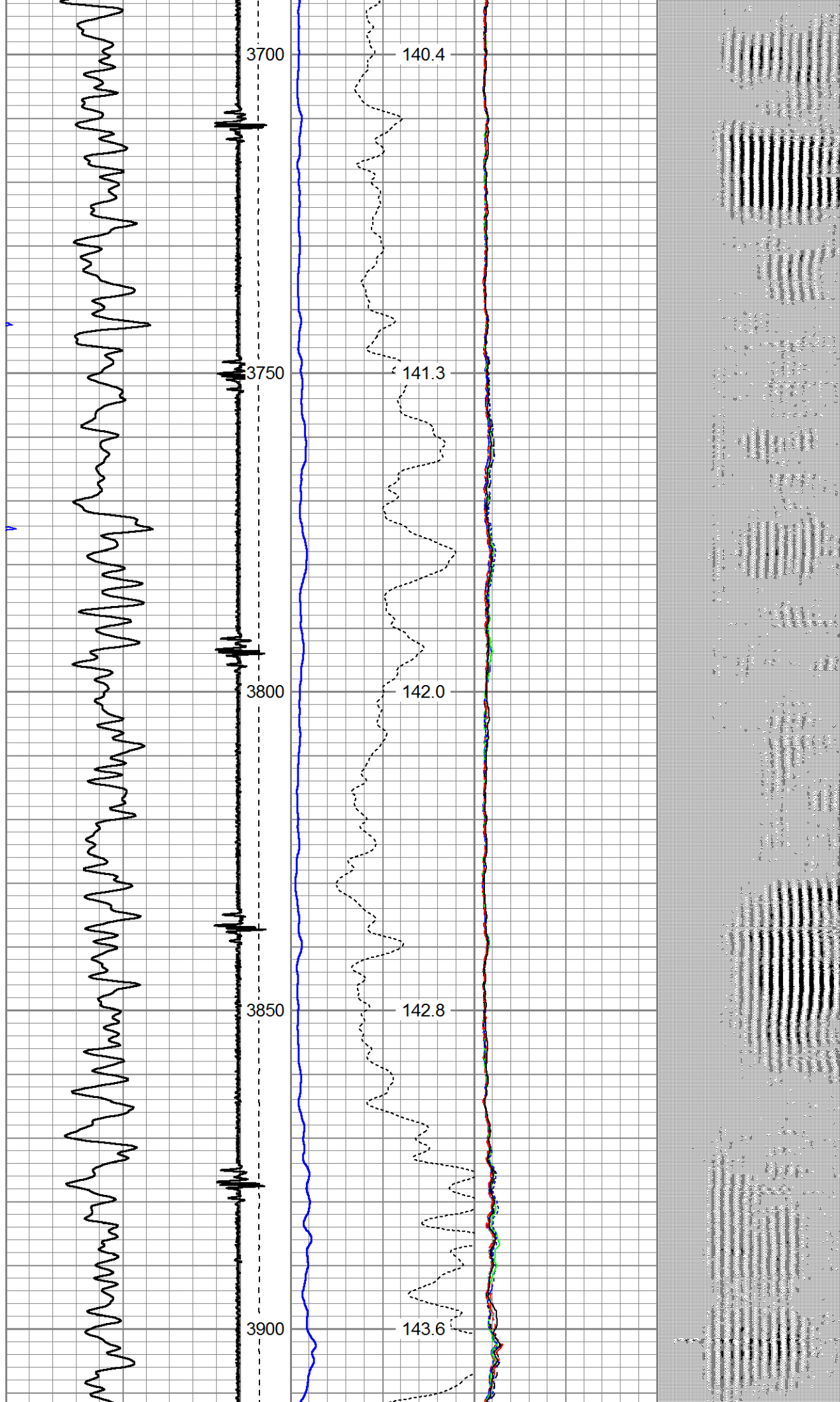


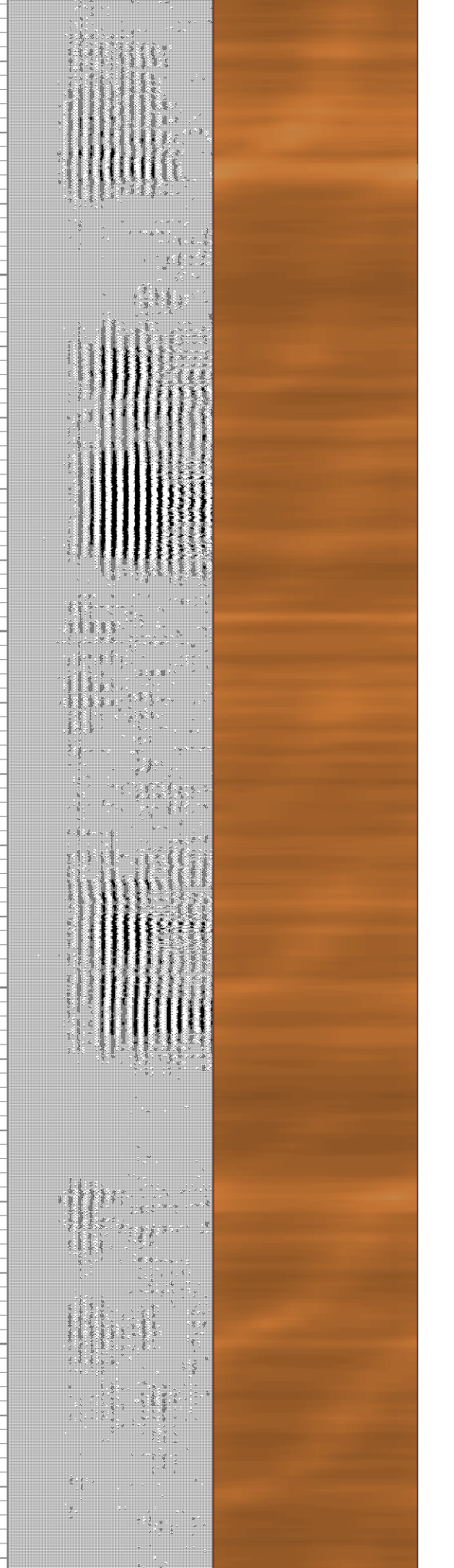
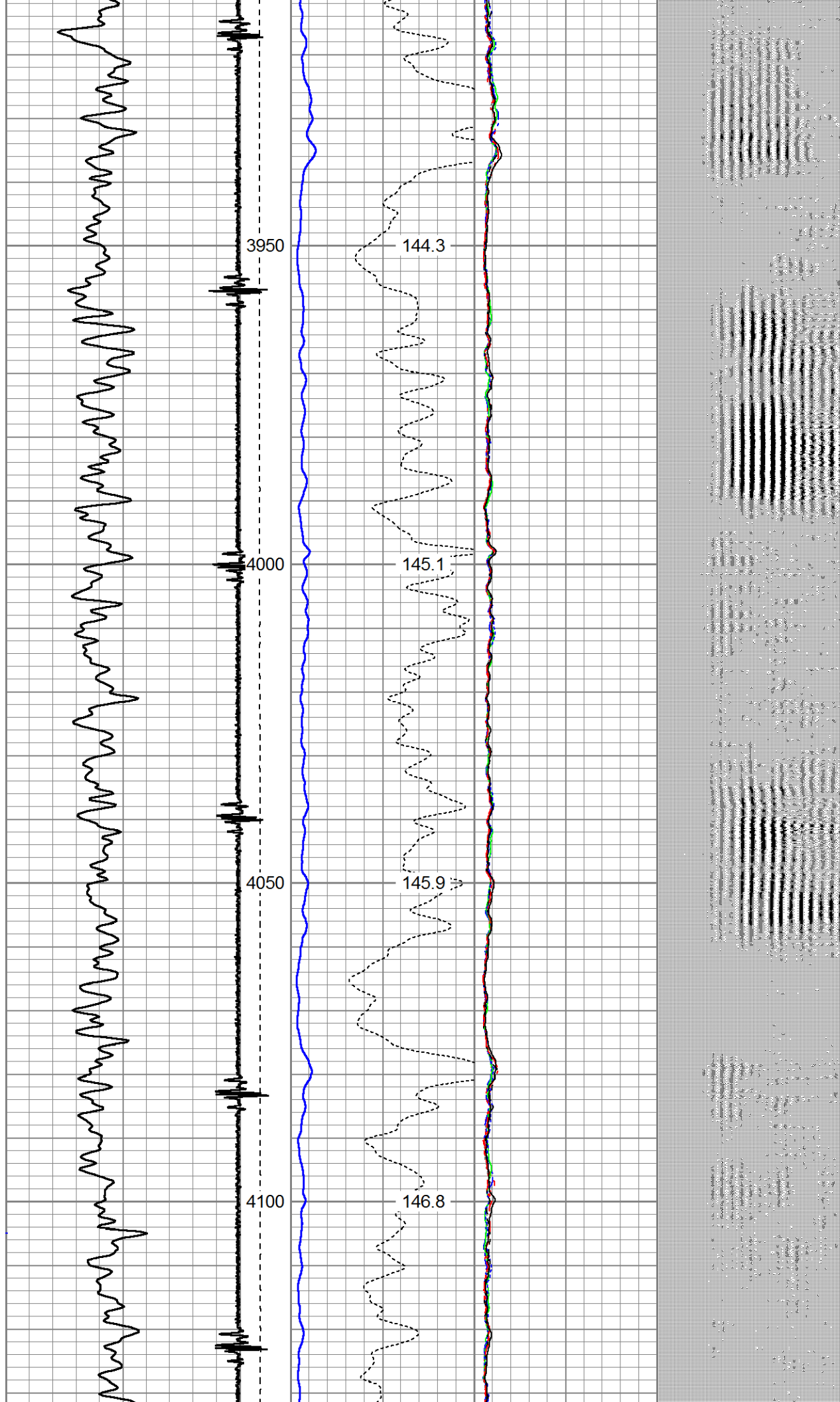


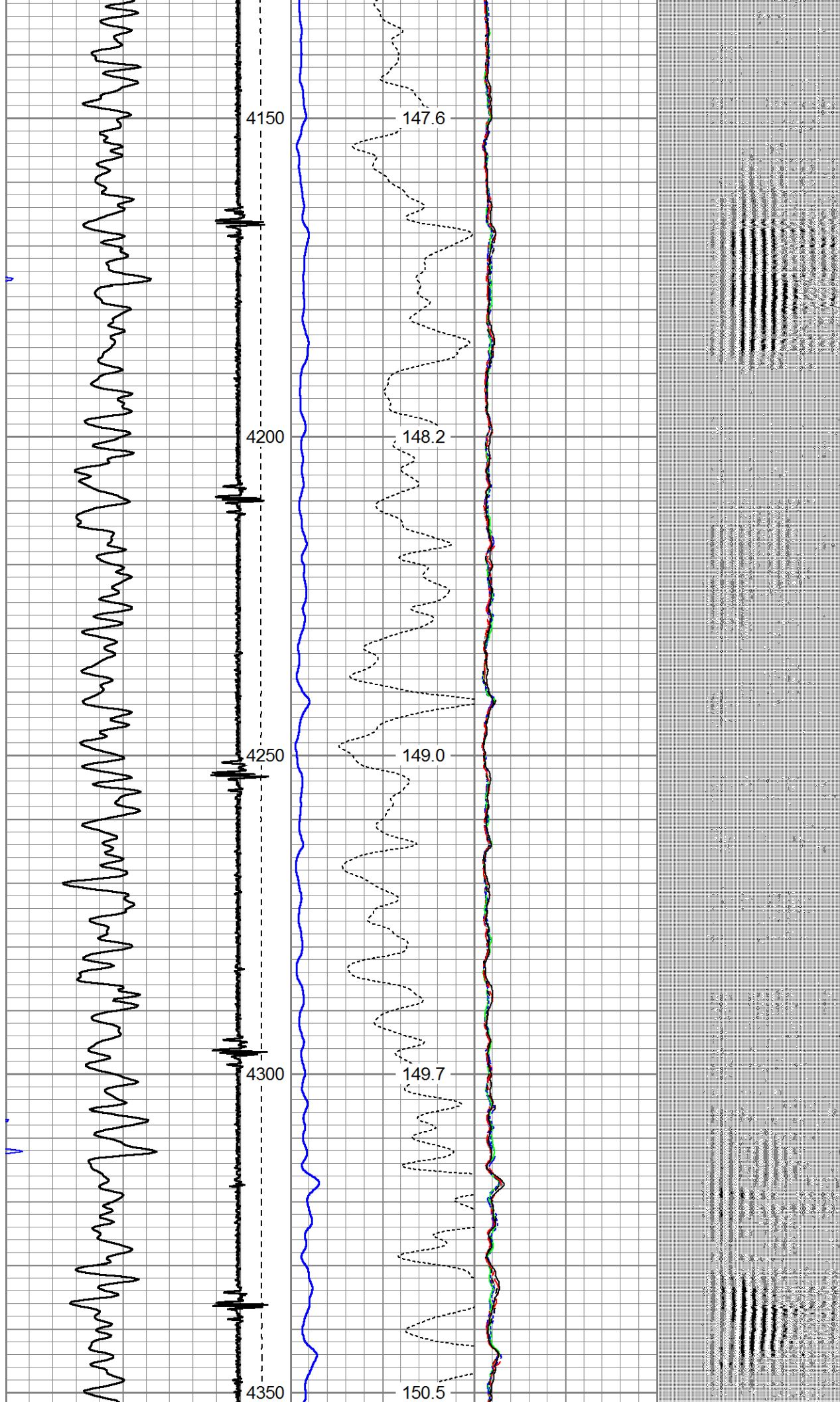


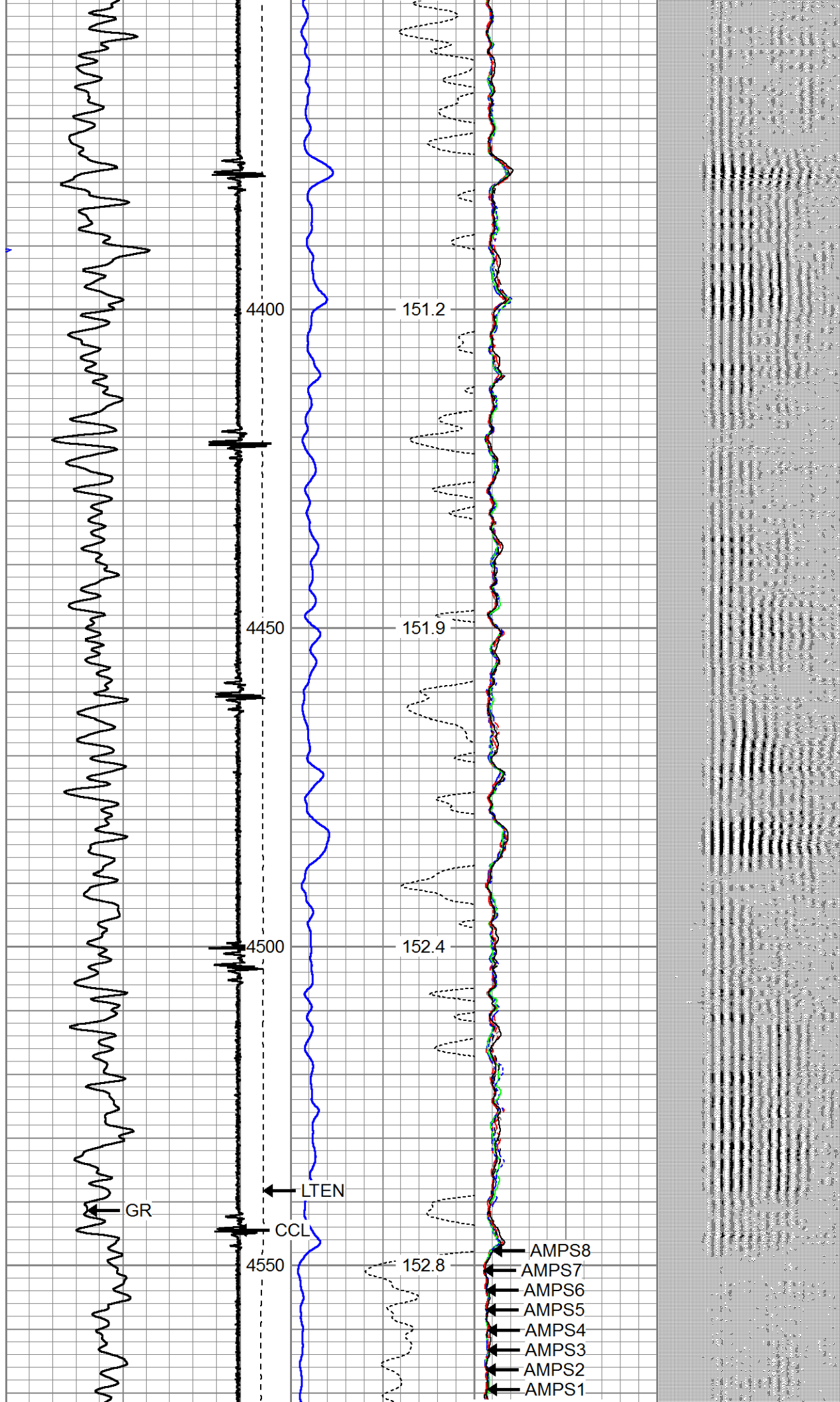


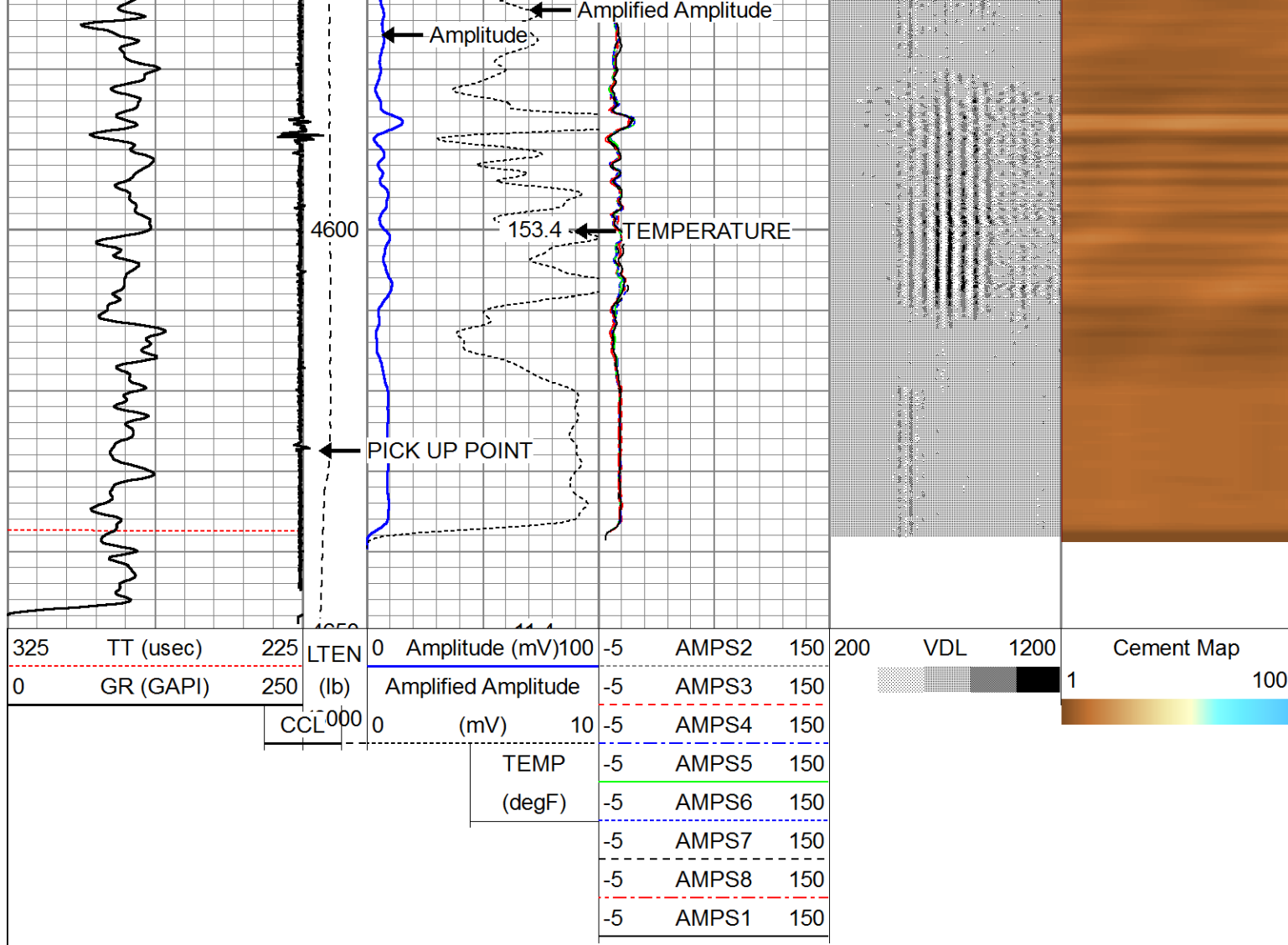












Company ERDAD OIL AND GAS CORP.
Well WARNER 01N-64W-17-1H
Field WATTENBERG
County WELD
State COLORADO