

PETROLEUM DEVELOPMENT CORP Weld County CO

Well Name: **Peterson 14X-304**

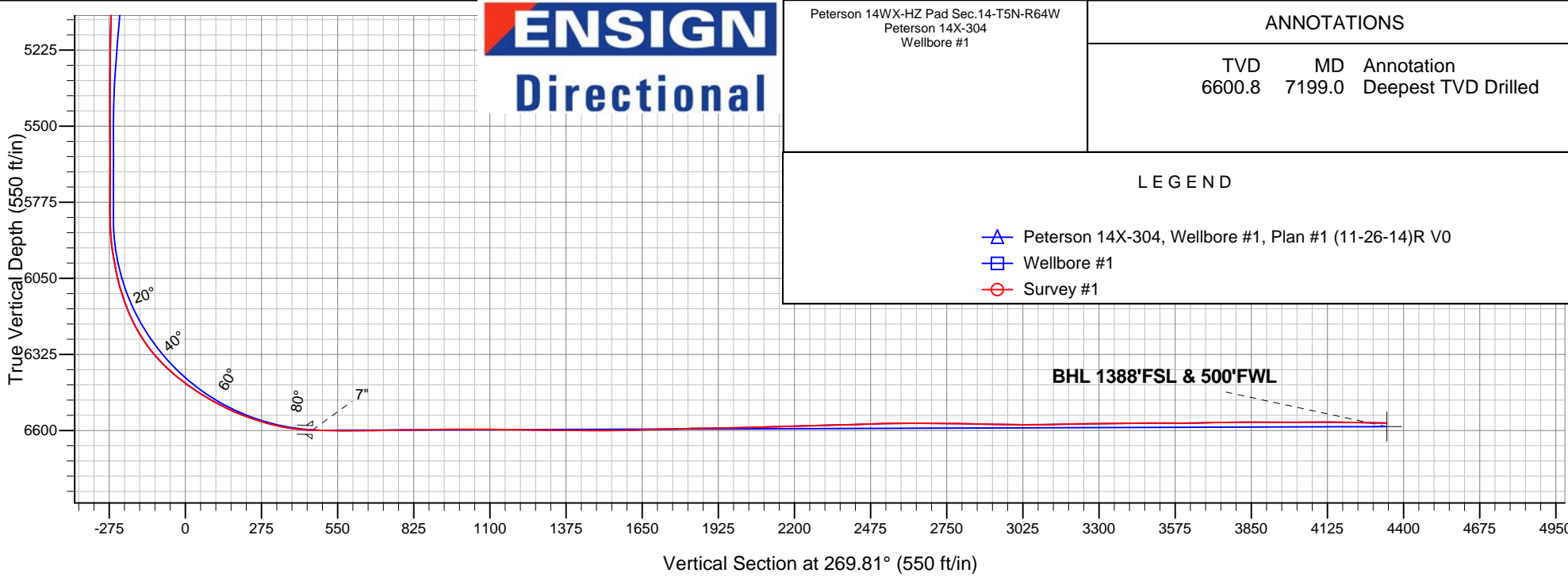
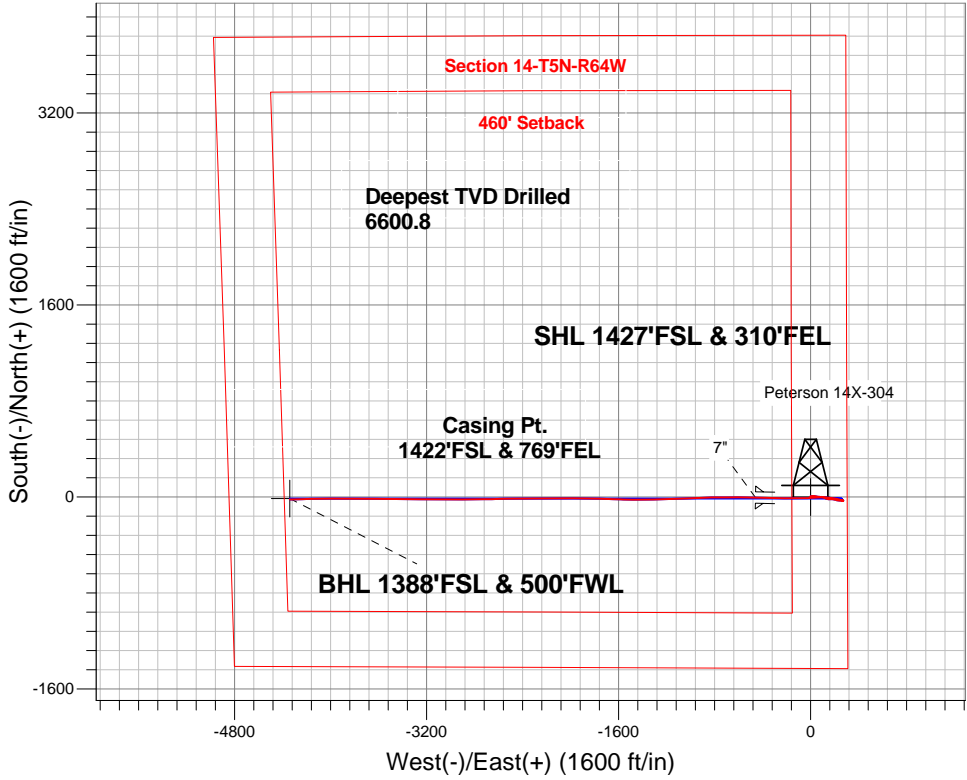
Surface Location: Peterson 14WX-HZ Pad Sec.14-T5N-R64W
North American Datum 1983 , US State Plane 1983 , Colorado Northern Zone

Ground Elevation: 4571.0

+N/-S	+E/-W	Northing	Easting	Latitude	Longitude	Slot
0.0	0.0	1388623.03	3275956.06	40.395940	-104.509210	
RKB - 15' WELL @ 4586.0ft (RKB - 15')						

FINAL SURVEY

Projected Bottom Hole Location
10906'MD 6573'TVD 21'S & 4340'W of SHL
89.3 degree Incl @ 268.6 degree AZM





PETROLEUM DEVELOPMENT CORP Weld County CO

SEC.14-T5N-R64W

Peterson 14WX-HZ Pad Sec.14-T5N-R64W

Peterson 14X-304

Wellbore #1

Survey: Survey #1

Standard Survey Report

15 December, 2014

Company:	PETROLEUM DEVELOPMENT CORP Weld County CO	Local Co-ordinate Reference:	Well Peterson 14X-304
Project:	SEC.14-T5N-R64W	TVD Reference:	WELL @ 4586.0ft (RKB - 15')
Site:	Peterson 14WX-HZ Pad Sec.14-T5N-R64W	MD Reference:	WELL @ 4586.0ft (RKB - 15')
Well:	Peterson 14X-304	North Reference:	True
Wellbore:	Wellbore #1	Survey Calculation Method:	Minimum Curvature
Design:	Wellbore #1	Database:	Landmark

Project	SEC.14-T5N-R64W, Weld County, CO		
Map System:	US State Plane 1983	System Datum:	Mean Sea Level
Geo Datum:	North American Datum 1983		Using Well Reference Point
Map Zone:	Colorado Northern Zone		Using geodetic scale factor

Site		Peterson 14WX-HZ Pad Sec.14-T5N-R64W			
Site Position:		Northing:	1,388,684.96 ft	Latitude:	40.396110
From:	Lat/Long	Easting:	3,275,955.37 ft	Longitude:	-104.509210
Position Uncertainty:	0.0 ft	Slot Radius:	"	Grid Convergence:	0.64 °

Well	Peterson 14X-304					
Well Position	+N-S	0.0 ft	Northing:	1,388,623.03 ft	Latitude:	40.395940
	+E-W	0.0 ft	Easting:	3,275,956.06 ft	Longitude:	-104.509210
Position Uncertainty		0.0 ft	Wellhead Elevation:	ft	Ground Level:	4,571.0 ft

Wellbore	Wellbore #1				
Magnetics	Model Name	Sample Date	Declination (°)	Dip Angle (°)	Field Strength (nT)
	IGRF2010	11/26/2014	8.26	66.97	52,794

Design	Wellbore #1				
Audit Notes:					
Version:	1.0	Phase:	ACTUAL	Tie On Depth:	0.0
Vertical Section:	Depth From (TVD) (ft)	+N/-S (ft)	+E/-W (ft)	Direction (°)	
	0.0	0.0	0.0	269.81	

Survey Program	Date	12/15/2014			
From (ft)	To (ft)	Survey (Wellbore)	Tool Name	Description	
178.0	10,906.0	Survey #1 (Wellbore #1)	MWD	MWD - Standard	

Survey										
Measured Depth (ft)	Inclination (°)	Azimuth (°)	Vertical Depth (ft)	+N/-S (ft)	+E/-W (ft)	Vertical Section (ft)	Dogleg Rate (°/100ft)	Build Rate (°/100ft)	Turn Rate (°/100ft)	
0.0	0.00	0.00	0.0	0.0	0.0	0.0	0.00	0.00	0.00	
1.0	0.00	33.60	1.0	0.0	0.0	0.0	0.00	0.00	0.00	
SHL 1427'FSL & 310'FEL										
178.0	0.10	33.60	178.0	0.1	0.1	-0.1	0.06	0.06	0.00	
301.0	0.10	341.40	301.0	0.3	0.1	-0.1	0.07	0.00	-42.44	
425.0	0.40	193.00	425.0	0.0	0.0	0.0	0.39	0.24	-119.68	
550.0	0.40	91.80	550.0	-0.4	0.3	-0.3	0.49	0.00	-80.96	
674.0	0.10	77.70	674.0	-0.4	0.9	-0.9	0.25	-0.24	-11.37	
798.0	0.20	55.90	798.0	-0.3	1.1	-1.1	0.09	0.08	-17.58	
880.0	1.00	28.90	880.0	0.4	1.6	-1.6	1.01	0.98	-32.93	
971.0	0.30	248.40	971.0	1.0	1.8	-1.8	1.37	-0.77	-154.40	
1,065.0	0.10	224.60	1,065.0	0.9	1.5	-1.5	0.23	-0.21	-25.32	

Company:	PETROLEUM DEVELOPMENT CORP Weld County CO	Local Co-ordinate Reference:	Well Peterson 14X-304
Project:	SEC.14-T5N-R64W	TVD Reference:	WELL @ 4586.0ft (RKB - 15')
Site:	Peterson 14WX-HZ Pad Sec.14-T5N-R64W	MD Reference:	WELL @ 4586.0ft (RKB - 15')
Well:	Peterson 14X-304	North Reference:	True
Wellbore:	Wellbore #1	Survey Calculation Method:	Minimum Curvature
Design:	Wellbore #1	Database:	Landmark

Survey									
Measured Depth (ft)	Inclination (°)	Azimuth (°)	Vertical Depth (ft)	+N/-S (ft)	+E/-W (ft)	Vertical Section (ft)	Dogleg Rate (°/100ft)	Build Rate (°/100ft)	Turn Rate (°/100ft)
1,220.0	0.10	351.60	1,220.0	0.9	1.4	-1.4	0.12	0.00	81.94
1,375.0	0.70	22.50	1,375.0	1.9	1.7	-1.7	0.40	0.39	19.94
1,526.0	0.90	313.60	1,526.0	3.6	1.2	-1.2	0.61	0.13	-45.63
1,678.0	0.70	44.80	1,678.0	5.1	1.0	-1.0	0.76	-0.13	60.00
1,829.0	0.20	137.30	1,829.0	5.5	1.8	-1.8	0.49	-0.33	61.26
1,950.0	3.30	84.40	1,949.9	5.7	5.4	-5.4	2.63	2.56	-43.72
2,070.0	4.00	81.00	2,069.6	6.7	13.0	-13.0	0.61	0.58	-2.83
2,192.0	5.50	86.50	2,191.2	7.7	23.0	-23.1	1.28	1.23	4.51
2,312.0	6.00	103.20	2,310.6	6.7	34.9	-34.9	1.45	0.42	13.92
2,432.0	5.00	101.00	2,430.1	4.2	46.1	-46.1	0.85	-0.83	-1.83
2,590.0	7.00	99.10	2,587.2	1.4	62.4	-62.4	1.27	1.27	-1.20
2,747.0	5.60	93.20	2,743.2	-0.5	79.5	-79.5	0.98	-0.89	-3.76
2,906.0	4.30	89.30	2,901.7	-0.9	93.2	-93.2	0.84	-0.82	-2.45
3,063.0	2.90	105.30	3,058.3	-1.9	102.9	-102.9	1.09	-0.89	10.19
3,127.0	3.40	107.80	3,122.2	-2.9	106.3	-106.3	0.81	0.78	3.91
3,189.0	5.10	110.20	3,184.1	-4.4	110.6	-110.6	2.76	2.74	3.87
3,253.0	4.70	118.10	3,247.8	-6.6	115.6	-115.6	1.22	-0.63	12.34
3,315.0	4.40	130.80	3,309.6	-9.4	119.6	-119.6	1.69	-0.48	20.48
3,378.0	5.30	120.90	3,372.4	-12.4	124.0	-123.9	1.95	1.43	-15.71
3,441.0	6.40	106.30	3,435.1	-14.9	129.8	-129.8	2.92	1.75	-23.17
3,505.0	6.90	103.10	3,498.7	-16.8	137.0	-136.9	0.97	0.78	-5.00
3,568.0	6.70	98.60	3,561.2	-18.2	144.3	-144.3	0.90	-0.32	-7.14
3,631.0	7.20	92.80	3,623.8	-18.9	151.9	-151.8	1.37	0.79	-9.21
3,694.0	6.70	88.90	3,686.3	-19.1	159.5	-159.5	1.09	-0.79	-6.19
3,758.0	6.40	83.10	3,749.9	-18.6	166.8	-166.7	1.13	-0.47	-9.06
3,821.0	5.10	89.60	3,812.6	-18.1	173.1	-173.0	2.30	-2.06	10.32
3,884.0	4.10	98.60	3,875.4	-18.4	178.1	-178.0	1.95	-1.59	14.29
3,947.0	4.20	101.60	3,938.2	-19.2	182.6	-182.5	0.38	0.16	4.76
4,042.0	5.10	97.90	4,032.9	-20.5	190.2	-190.1	1.00	0.95	-3.89
4,168.0	4.00	103.70	4,158.5	-22.3	200.0	-199.9	0.95	-0.87	4.60
4,295.0	5.50	107.90	4,285.0	-25.3	210.1	-210.0	1.21	1.18	3.31
4,421.0	5.60	95.40	4,410.5	-27.7	222.0	-221.9	0.96	0.08	-9.92
4,547.0	5.00	100.20	4,535.9	-29.2	233.5	-233.4	0.59	-0.48	3.81
4,673.0	5.10	93.70	4,661.4	-30.6	244.5	-244.4	0.46	0.08	-5.16
4,800.0	4.00	100.90	4,788.0	-31.8	254.5	-254.4	0.97	-0.87	5.67
4,926.0	3.20	81.60	4,913.8	-32.1	262.3	-262.2	1.14	-0.63	-15.32
5,053.0	1.50	66.40	5,040.7	-30.9	267.3	-267.2	1.41	-1.34	-11.97
5,179.0	1.30	101.40	5,166.6	-30.5	270.2	-270.1	0.69	-0.16	27.78
5,337.0	0.30	51.50	5,324.6	-30.6	272.3	-272.2	0.72	-0.63	-31.58
5,496.0	0.40	314.30	5,483.6	-30.0	272.2	-272.1	0.33	0.06	-61.13
5,654.0	0.50	178.60	5,641.6	-30.3	271.8	-271.7	0.53	0.06	-85.89
5,781.0	0.70	150.10	5,768.6	-31.5	272.2	-272.1	0.28	0.16	-22.44
5,812.0	0.70	174.40	5,799.6	-31.9	272.3	-272.2	0.95	0.00	78.39
5,844.0	0.90	279.00	5,831.6	-32.0	272.1	-272.0	3.97	0.63	326.88
5,875.0	2.60	295.50	5,862.6	-31.7	271.2	-271.1	5.66	5.48	53.23
5,907.0	4.60	297.50	5,894.5	-30.8	269.4	-269.3	6.26	6.25	6.25
5,938.0	6.60	288.60	5,925.4	-29.6	266.7	-266.6	7.01	6.45	-28.71
5,970.0	8.80	287.40	5,957.1	-28.3	262.6	-262.5	6.89	6.88	-3.75
5,985.0	9.80	287.00	5,971.9	-27.6	260.3	-260.2	6.68	6.67	-2.67
6,016.0	11.40	285.60	6,002.4	-26.0	254.8	-254.7	5.23	5.16	-4.52
6,048.0	12.40	285.30	6,033.7	-24.2	248.4	-248.3	3.13	3.13	-0.94
6,080.0	14.80	285.50	6,064.8	-22.2	241.2	-241.1	7.50	7.50	0.63
6,111.0	17.50	285.60	6,094.5	-19.9	232.9	-232.8	8.71	8.71	0.32
6,143.0	19.80	284.80	6,124.9	-17.3	223.0	-222.9	7.23	7.19	-2.50

Company:	PETROLEUM DEVELOPMENT CORP Weld County CO	Local Co-ordinate Reference:	Well Peterson 14X-304
Project:	SEC.14-T5N-R64W	TVD Reference:	WELL @ 4586.0ft (RKB - 15')
Site:	Peterson 14WX-HZ Pad Sec.14-T5N-R64W	MD Reference:	WELL @ 4586.0ft (RKB - 15')
Well:	Peterson 14X-304	North Reference:	True
Wellbore:	Wellbore #1	Survey Calculation Method:	Minimum Curvature
Design:	Wellbore #1	Database:	Landmark

Survey									
Measured Depth (ft)	Inclination (°)	Azimuth (°)	Vertical Depth (ft)	+N/-S (ft)	+E/-W (ft)	Vertical Section (ft)	Dogleg Rate (°/100ft)	Build Rate (°/100ft)	Turn Rate (°/100ft)
6,175.0	21.70	282.00	6,154.8	-14.6	212.0	-211.9	6.70	5.94	-8.75
6,206.0	23.60	277.70	6,183.4	-12.6	200.2	-200.2	8.13	6.13	-13.87
6,238.0	26.90	277.20	6,212.3	-10.9	186.7	-186.6	10.33	10.31	-1.56
6,270.0	30.00	277.00	6,240.5	-9.0	171.5	-171.5	9.69	9.69	-0.63
6,301.0	33.00	277.20	6,266.9	-7.0	155.5	-155.5	9.68	9.68	0.65
6,333.0	36.10	275.40	6,293.2	-5.0	137.4	-137.4	10.20	9.69	-5.63
6,364.0	39.10	272.60	6,317.8	-3.7	118.6	-118.6	11.13	9.68	-9.03
6,396.0	42.10	269.50	6,342.1	-3.3	97.8	-97.8	11.30	9.38	-9.69
6,428.0	45.10	266.70	6,365.3	-4.1	75.7	-75.7	11.15	9.38	-8.75
6,459.0	48.60	265.30	6,386.5	-5.7	53.2	-53.1	11.76	11.29	-4.52
6,491.0	51.80	266.80	6,407.0	-7.3	28.6	-28.6	10.63	10.00	4.69
6,523.0	52.90	268.40	6,426.5	-8.4	3.3	-3.3	5.24	3.44	5.00
6,554.0	54.90	268.90	6,444.8	-9.0	-21.7	21.7	6.58	6.45	1.61
6,586.0	57.00	268.90	6,462.7	-9.5	-48.2	48.3	6.56	6.56	0.00
6,618.0	59.10	269.10	6,479.6	-10.0	-75.4	75.4	6.58	6.56	0.63
6,649.0	60.60	269.50	6,495.2	-10.3	-102.2	102.2	4.97	4.84	1.29
6,681.0	62.70	269.50	6,510.4	-10.5	-130.3	130.4	6.56	6.56	0.00
6,713.0	65.20	269.30	6,524.4	-10.8	-159.1	159.1	7.83	7.81	-0.63
6,744.0	67.60	269.50	6,536.8	-11.1	-187.5	187.5	7.76	7.74	0.65
6,776.0	69.60	270.00	6,548.5	-11.3	-217.3	217.3	6.42	6.25	1.56
6,808.0	71.50	270.70	6,559.2	-11.1	-247.4	247.5	6.29	5.94	2.19
6,840.0	73.20	271.90	6,568.9	-10.4	-277.9	278.0	6.40	5.31	3.75
6,871.0	75.30	271.90	6,577.3	-9.4	-307.7	307.8	6.77	6.77	0.00
6,903.0	78.00	271.60	6,584.7	-8.5	-338.9	338.9	8.49	8.44	-0.94
6,935.0	81.00	271.60	6,590.5	-7.6	-370.3	370.3	9.38	9.38	0.00
6,966.0	83.70	271.80	6,594.6	-6.7	-401.0	401.0	8.73	8.71	0.65
6,992.0	85.80	271.40	6,597.0	-5.9	-426.9	426.9	8.22	8.08	-1.54
7,024.0	87.76	271.22	6,598.8	-5.2	-458.8	458.9	6.14	6.11	-0.56
7"									
7,046.0	89.10	271.10	6,599.4	-4.8	-480.8	480.8	6.14	6.11	-0.55
7,076.0	89.10	271.10	6,599.9	-4.2	-510.8	510.8	0.00	0.00	0.00
7,137.0	89.40	270.00	6,600.7	-3.6	-571.8	571.8	1.87	0.49	-1.80
7,199.0	90.40	270.20	6,600.8	-3.5	-633.8	633.8	1.64	1.61	0.32
Deepest TVD Drilled									
7,262.0	90.60	270.30	6,600.2	-3.2	-696.8	696.8	0.35	0.32	0.16
7,325.0	91.30	269.30	6,599.2	-3.4	-759.8	759.8	1.94	1.11	-1.59
7,389.0	91.30	268.40	6,597.8	-4.7	-823.8	823.8	1.41	0.00	-1.41
7,452.0	90.80	267.40	6,596.6	-7.0	-886.7	886.7	1.77	-0.79	-1.59
7,515.0	90.10	268.10	6,596.1	-9.5	-949.7	949.7	1.57	-1.11	1.11
7,578.0	89.80	267.70	6,596.2	-11.8	-1,012.6	1,012.6	0.79	-0.48	-0.63
7,642.0	89.80	267.20	6,596.4	-14.7	-1,076.5	1,076.6	0.78	0.00	-0.78
7,705.0	89.70	268.10	6,596.7	-17.2	-1,139.5	1,139.5	1.44	-0.16	1.43
7,768.0	89.60	268.60	6,597.0	-19.1	-1,202.5	1,202.5	0.81	-0.16	0.79
7,832.0	89.30	268.60	6,597.7	-20.6	-1,266.4	1,266.5	0.47	-0.47	0.00
7,895.0	88.90	269.00	6,598.6	-21.9	-1,329.4	1,329.5	0.90	-0.63	0.63
7,959.0	89.20	269.80	6,599.7	-22.6	-1,393.4	1,393.5	1.33	0.47	1.25
8,022.0	89.70	269.80	6,600.3	-22.8	-1,456.4	1,456.5	0.79	0.79	0.00
8,085.0	90.40	270.90	6,600.3	-22.4	-1,519.4	1,519.5	2.07	1.11	1.75
8,148.0	91.30	272.80	6,599.3	-20.4	-1,582.4	1,582.4	3.34	1.43	3.02
8,211.0	91.50	272.30	6,597.8	-17.6	-1,645.3	1,645.3	0.85	0.32	-0.79
8,274.0	91.50	271.40	6,596.1	-15.6	-1,708.2	1,708.3	1.43	0.00	-1.43
8,337.0	91.30	271.10	6,594.6	-14.2	-1,771.2	1,771.2	0.57	-0.32	-0.48
8,400.0	91.20	270.90	6,593.2	-13.1	-1,834.2	1,834.2	0.35	-0.16	-0.32

Company:	PETROLEUM DEVELOPMENT CORP Weld County CO	Local Co-ordinate Reference:	Well Peterson 14X-304
Project:	SEC.14-T5N-R64W	TVD Reference:	WELL @ 4586.0ft (RKB - 15')
Site:	Peterson 14WX-HZ Pad Sec.14-T5N-R64W	MD Reference:	WELL @ 4586.0ft (RKB - 15')
Well:	Peterson 14X-304	North Reference:	True
Wellbore:	Wellbore #1	Survey Calculation Method:	Minimum Curvature
Design:	Wellbore #1	Database:	Landmark

Survey									
Measured Depth (ft)	Inclination (°)	Azimuth (°)	Vertical Depth (ft)	+N/-S (ft)	+E/-W (ft)	Vertical Section (ft)	Dogleg Rate (°/100ft)	Build Rate (°/100ft)	Turn Rate (°/100ft)
8,463.0	90.80	270.90	6,592.1	-12.1	-1,897.1	1,897.2	0.63	-0.63	0.00
8,527.0	91.30	270.10	6,590.9	-11.6	-1,961.1	1,961.2	1.47	0.78	-1.25
8,590.0	91.40	270.10	6,589.5	-11.4	-2,024.1	2,024.1	0.16	0.16	0.00
8,654.0	91.60	270.10	6,587.8	-11.3	-2,088.1	2,088.1	0.31	0.31	0.00
8,717.0	91.80	269.80	6,585.9	-11.4	-2,151.1	2,151.1	0.57	0.32	-0.48
8,780.0	91.70	269.70	6,584.0	-11.7	-2,214.0	2,214.1	0.22	-0.16	-0.16
8,843.0	91.60	269.30	6,582.2	-12.2	-2,277.0	2,277.0	0.65	-0.16	-0.63
8,906.0	91.40	269.30	6,580.5	-13.0	-2,340.0	2,340.0	0.32	-0.32	0.00
8,970.0	91.40	269.30	6,579.0	-13.8	-2,404.0	2,404.0	0.00	0.00	0.00
9,033.0	91.80	268.80	6,577.2	-14.8	-2,466.9	2,467.0	1.02	0.63	-0.79
9,096.0	91.40	269.50	6,575.4	-15.7	-2,529.9	2,529.9	1.28	-0.63	1.11
9,159.0	91.00	268.80	6,574.1	-16.7	-2,592.9	2,592.9	1.28	-0.63	-1.11
9,222.0	89.80	269.30	6,573.7	-17.7	-2,655.9	2,655.9	2.06	-1.90	0.79
9,285.0	89.20	269.20	6,574.2	-18.5	-2,718.9	2,718.9	0.97	-0.95	-0.16
9,348.0	88.90	269.20	6,575.3	-19.4	-2,781.8	2,781.9	0.48	-0.48	0.00
9,411.0	89.10	269.30	6,576.4	-20.2	-2,844.8	2,844.9	0.35	0.32	0.16
9,474.0	88.70	269.10	6,577.6	-21.1	-2,907.8	2,907.9	0.71	-0.63	-0.32
9,537.0	89.00	269.50	6,578.9	-21.9	-2,970.8	2,970.8	0.79	0.48	0.63
9,600.0	89.80	270.50	6,579.5	-21.9	-3,033.8	3,033.8	2.03	1.27	1.59
9,664.0	90.90	271.10	6,579.1	-21.0	-3,097.8	3,097.8	1.96	1.72	0.94
9,727.0	91.20	270.90	6,578.0	-19.9	-3,160.8	3,160.8	0.57	0.48	-0.32
9,790.0	91.20	270.50	6,576.7	-19.1	-3,223.7	3,223.8	0.63	0.00	-0.63
9,853.0	91.30	270.90	6,575.3	-18.4	-3,286.7	3,286.8	0.65	0.16	0.63
9,916.0	90.50	270.50	6,574.3	-17.6	-3,349.7	3,349.7	1.42	-1.27	-0.63
9,979.0	90.60	270.70	6,573.7	-16.9	-3,412.7	3,412.7	0.35	0.16	0.32
10,042.0	89.40	269.70	6,573.7	-16.7	-3,475.7	3,475.7	2.48	-1.90	-1.59
10,105.0	89.90	269.80	6,574.1	-17.0	-3,538.7	3,538.7	0.81	0.79	0.16
10,168.0	90.50	269.50	6,573.8	-17.4	-3,601.7	3,601.7	1.06	0.95	-0.48
10,231.0	91.70	270.90	6,572.6	-17.2	-3,664.7	3,664.7	2.93	1.90	2.22
10,294.0	91.10	272.10	6,571.1	-15.5	-3,727.6	3,727.7	2.13	-0.95	1.90
10,357.0	90.00	270.00	6,570.5	-14.4	-3,790.6	3,790.6	3.76	-1.75	-3.33
10,420.0	90.50	270.00	6,570.2	-14.4	-3,853.6	3,853.6	0.79	0.79	0.00
10,483.0	89.60	270.20	6,570.2	-14.2	-3,916.6	3,916.6	1.46	-1.43	0.32
10,547.0	90.00	269.10	6,570.4	-14.6	-3,980.6	3,980.6	1.83	0.63	-1.72
10,610.0	90.60	268.80	6,570.1	-15.8	-4,043.6	4,043.6	1.06	0.95	-0.48
10,673.0	90.20	270.00	6,569.6	-16.4	-4,106.6	4,106.6	2.01	-0.63	1.90
10,737.0	88.80	268.90	6,570.2	-17.1	-4,170.6	4,170.6	2.78	-2.19	-1.72
10,800.0	88.90	268.80	6,571.4	-18.3	-4,233.6	4,233.6	0.22	0.16	-0.16
10,851.0	89.30	268.60	6,572.2	-19.5	-4,284.5	4,284.6	0.88	0.78	-0.39
10,906.0	89.30	268.60	6,572.9	-20.8	-4,339.5	4,339.6	0.00	0.00	0.00
BHL 1395'FSL & 500'FWL									

Casing Points				
Measured Depth (ft)	Vertical Depth (ft)	Name	Casing Diameter (")	Hole Diameter (")
7,024.0	6,598.8	7"	7	7-1/2

Company:	PETROLEUM DEVELOPMENT CORP Weld County CO	Local Co-ordinate Reference:	Well Peterson 14X-304
Project:	SEC.14-T5N-R64W	TVD Reference:	WELL @ 4586.0ft (RKB - 15')
Site:	Peterson 14WX-HZ Pad Sec.14-T5N-R64W	MD Reference:	WELL @ 4586.0ft (RKB - 15')
Well:	Peterson 14X-304	North Reference:	True
Wellbore:	Wellbore #1	Survey Calculation Method:	Minimum Curvature
Design:	Wellbore #1	Database:	Landmark

Survey Annotations				
Measured Depth (ft)	Vertical Depth (ft)	Local Coordinates		Comment
		+N/-S (ft)	+E/-W (ft)	
7,199.0	6,600.8	-3.5	-633.8	Deepest TVD Drilled

Checked By: _____	Approved By: _____	Date: _____
-------------------	--------------------	-------------