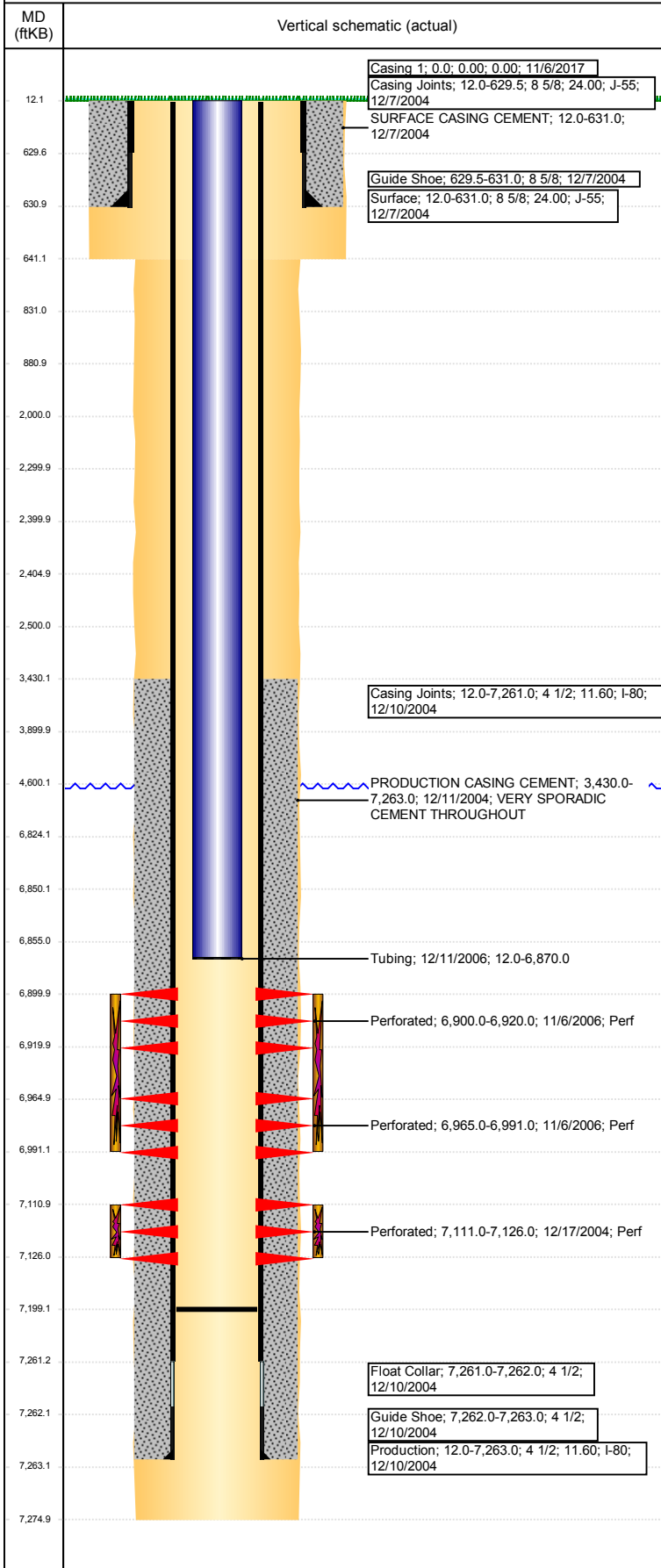


Well Name: SHELTON 17-2

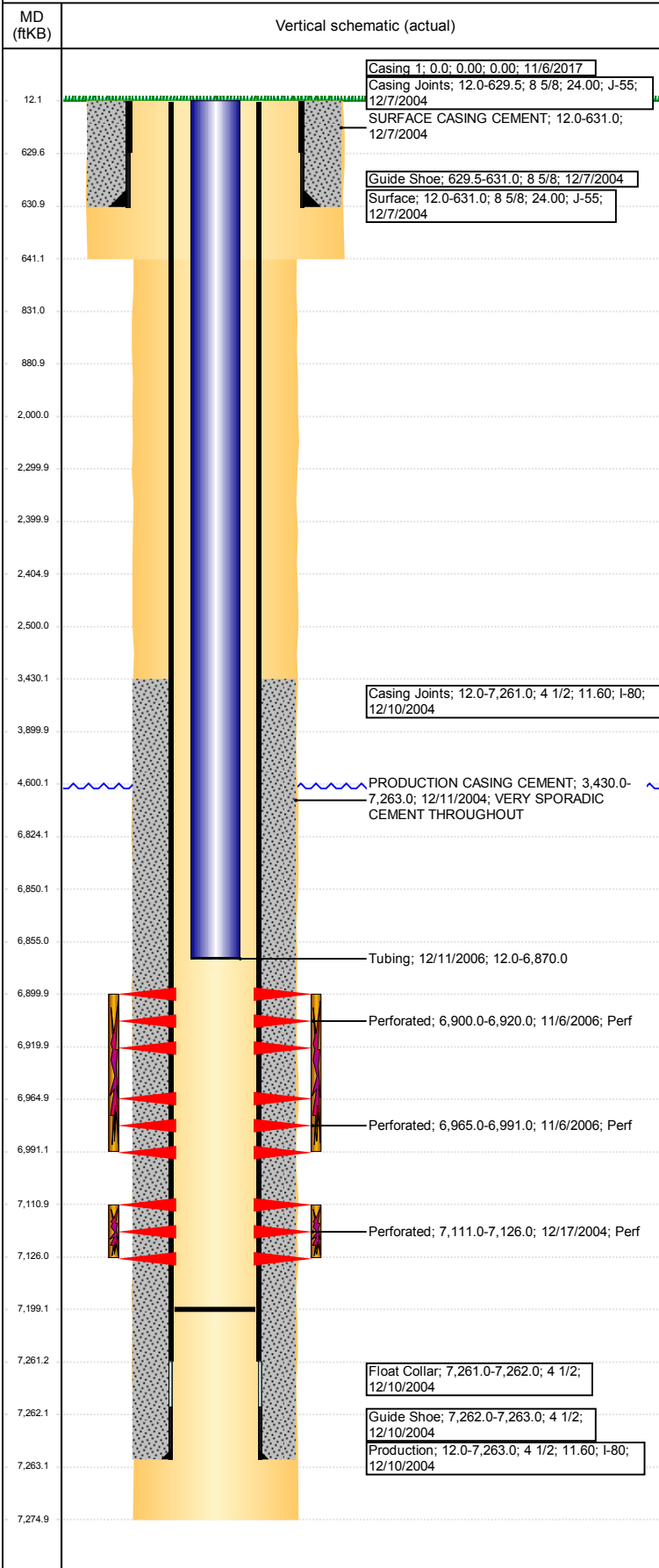
VERTICAL - ORIGINAL HOLE, 11/7/2017 3:02:24 PM



Well Header							
API	05-123-22578	Business Unit	DJ BASIN	District	15	Well Config	VERTICAL
Original KB Elevation (ft)	4,812	KB - GL / MSL (ftKB)	12.00	Spud Date	12/6/2004	P & A Date	
Comment							
Directions To Well							
Congressional Location							
Quarter 3	Quarter 4	Section	Township	Twntshp N/S Dir	Range	Range E/W Dir	
NW	NE	2	3	N	65	W	
Bottom Hole Location							
North-South Distance (ft)		From N or S Line		East-West Distance (ft)		From E or W Line	
Plug Back Total Depths							
Date	Depth (ftKB)	Method		Com			
12/17/2004	7,199.0	CASED HOLE LOG		DEPTH LOGGER ON CBL			
Wellbore Sections							
Section Des		Size (in)	Act Top, MD (ftKB)		Act Btm, MD (ftKB)		
SURFACE		12 1/4	12		641		
PRODUCTION		7 7/8	641		7,275		
Zone Statuses							
Zone Name	Status Date	Status	Fluid Type	Job	Prod Method		
NIOBRARA	11/14/2006	PR	Water	RECOMPLETI...	Flowing		
NIOBRARA	10/21/2010	PR		COMMINGLE...			
NIOBRARA	4/1/2014	PR					
NIOBRARA	5/9/2017	SI					
CODELL	1/5/2005	PR	Water	DRILLING/CO...	Flowing		
CODELL	11/6/2006	SI		RECOMPLETI...			
CODELL	10/21/2010	PR		COMMINGLE...			
CODELL	4/1/2014	PR					
Casing Strings							
<des>, <depthbtm>ftKB							
Casing Description	Run Date	OD (in)	Wt/Len (l...)	Grade	Top, MD (ft...)	MD (ftKB)	
Surface	11/6/2017	8 5/8	24.00	J-55	12.0	631.0	
Production, 7,263.0ftKB							
Casing Description	Run Date	OD (in)	Wt/Len (l...)	Grade	Top, MD (ft...)	MD (ftKB)	
Production	12/10/2004	4 1/2	11.60	I-80	12.0	7,263.0	
Cement							
Description	SURFACE CASING CEMENT				Top Depth (ftKB)	Bottom Depth (ftKB)	
					12.0	631.0	
Description	PRODUCTION CASING CEMENT				Top Depth (ftKB)	Bottom Depth (ftKB)	
					3,430.0	7,263.0	
Description	Dump Bail				Top Depth (ftKB)	Bottom Depth (ftKB)	
					6,824.0	6,850.0	
Description	Balance Plug				Top Depth (ftKB)	Bottom Depth (ftKB)	
					3,900.0	4,600.0	
Description	Balance Plug				Top Depth (ftKB)	Bottom Depth (ftKB)	
					2,405.0	2,500.0	
Description	Cement Squeeze				Top Depth (ftKB)	Bottom Depth (ftKB)	
					2,000.0	2,500.0	
Description	Balance Plug				Top Depth (ftKB)	Bottom Depth (ftKB)	
					2,300.0	2,400.0	
Description	Balance Plug				Top Depth (ftKB)	Bottom Depth (ftKB)	
					631.0	831.0	
Description	Balance Plug				Top Depth (ftKB)	Bottom Depth (ftKB)	
					12.0	631.0	
Description	Balance Plug				Top Depth (ftKB)	Bottom Depth (ftKB)	
					831.0	881.0	
Tubing Strings							
Tubing Description	Run Date	String...	ID (in)	Wt (lb/ft)	Grade	Len (ft)	Set De...
Tubing	12/11/2006	2 3/8	2.00	4.70	J-55	6,858.00	
Tubing Components							
Item Des	OD (in)	Wt (lb/ft)	Grade	Jts	Len (ft)	Btm (ftKB)	Btm (TVD) (ftKB)
EUE 8rd Tubing	2 3/8	4.70	J-55	224	6,856.00	6,868.0	
Seal Nipple	2 3/8			1	1.00	6,869.0	

Well Name: SHELTON 17-2

VERTICAL - ORIGINAL HOLE, 11/7/2017 3:02:25 PM



Tubing Components							
Item Des	OD (in)	Wt (lb/ft)	Grade	Jts	Len (ft)	Btm (ftKB)	Btm (TVD) (ftKB)
Notched collar	2 3/8			1	1.00	6,870.0	

Other In Hole					
Run Date	Des	OD (in)	Top (ftKB)	Btm (ftKB)	
11/6/2017	Cast Iron Bridge Plug	4	6,850.0	6,855.0	
11/6/2017	Cement Retainer	4	2,400.0	2,405.0	

Logs			
Date	Type	Top, MD (ftKB)	Btm, MD (ftKB)
12/10/2004	COMPENSATED DENSITY	4,300.0	7,250.0
12/10/2004	INDUCTION	631.0	7,270.0
12/17/2004	CBL/CCL/GR	2,970.0	5,300.0
12/17/2004	CBL/CCL/GR	3,236.0	5,243.0
12/17/2004	CBL/CCL/GR	5,243.0	7,193.0

Perforation Data					
Linked Zone	Bnch/St g	Sum of Entered Shot Total	Top (ftKB)	Btm (ftKB)	Date
CODELL, ORIGINAL HOLE		0	2,500.00	2,500.00	11/6/2017
NIOBRARA, ORIGINAL HOLE		40	6,900.00	6,920.00	11/6/2006
NIOBRARA, ORIGINAL HOLE		52	6,965.00	6,991.00	11/6/2006
CODELL, ORIGINAL HOLE		60	7,111.00	7,126.00	12/17/2004
Total (Sum)		152			

Stimulation Intervals		
Start Date 12/20/2004	Primary Job Type DRILLING/COMPLETION - ORIGINAL	
Technical Result	Tech Result Details	Tech Result Note
Comment		

Start Date 11/9/2006	Primary Job Type RECOMPLETION	
Technical Result	Tech Result Details	Tech Result Note
Comment		