

**PROJECT DETAILS: Garfield County, CO**

Geodetic System: US State Plane 1983  
Datum: North American Datum 1983  
Ellipsoid: GRS 1980  
Zone: Colorado Central Zone  
System Datum: Mean Sea Level

**WELL DETAILS: CC 0697-03-17W**

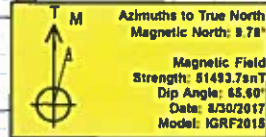
+N/-S 0.0 +E/-W 0.0 Northing 1639545.15 Easting 2237389.01 8428.0  
Latitude 39.558220 Longitude -108.205164

Project: Garfield County, CO  
Site: CC 0697-03-07 Pad  
Well: CC 0697-03-17W  
Wellbore: Wellbore #1  
Design: Design #2  
Latitude: 39.558220  
Longitude: -108.205164  
Ground Level: 8428.0  
well @ 8458.0usft (30' RKB)



**REFERENCE INFORMATION**

Co-ordinate (N/E) Reference: Well CC 0697-03-17W, True North  
Vertical (TVD) Reference: well @ 8458.0usft (30' RKB)  
Section (VS) Reference: Slot - (0.6N, 0.6E)  
Measured Depth Reference: well @ 8458.0usft (30' RKB)  
Calculation Method: Minimum Curvature



**FORMATION TOP DETAILS**

TVDPath	MDPath	Formation
4443.0	4705.4	G' Sand
5543.0	5964.5	Williams Fork
7343.0	7788.8	TOG
8543.0	8988.8	Cameo
9203.0	9648.8	Base Cameo Coal
9243.0	9688.8	Rollins

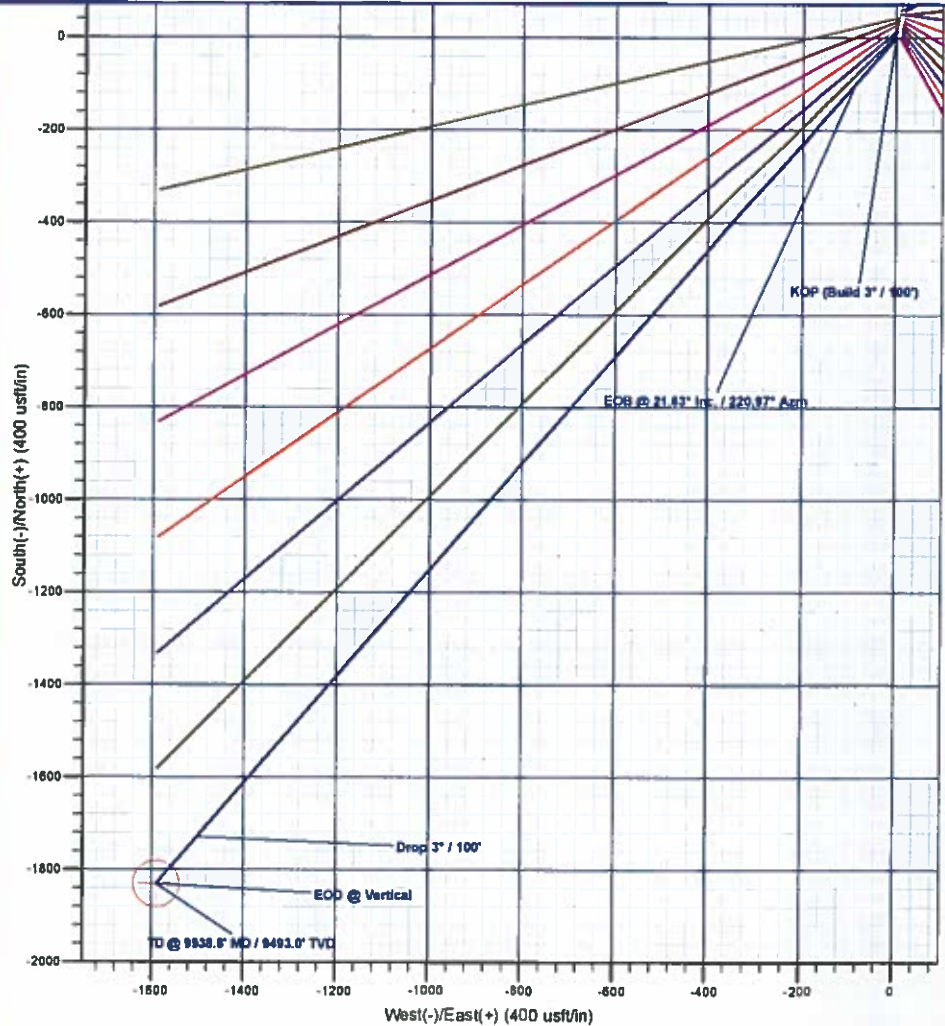
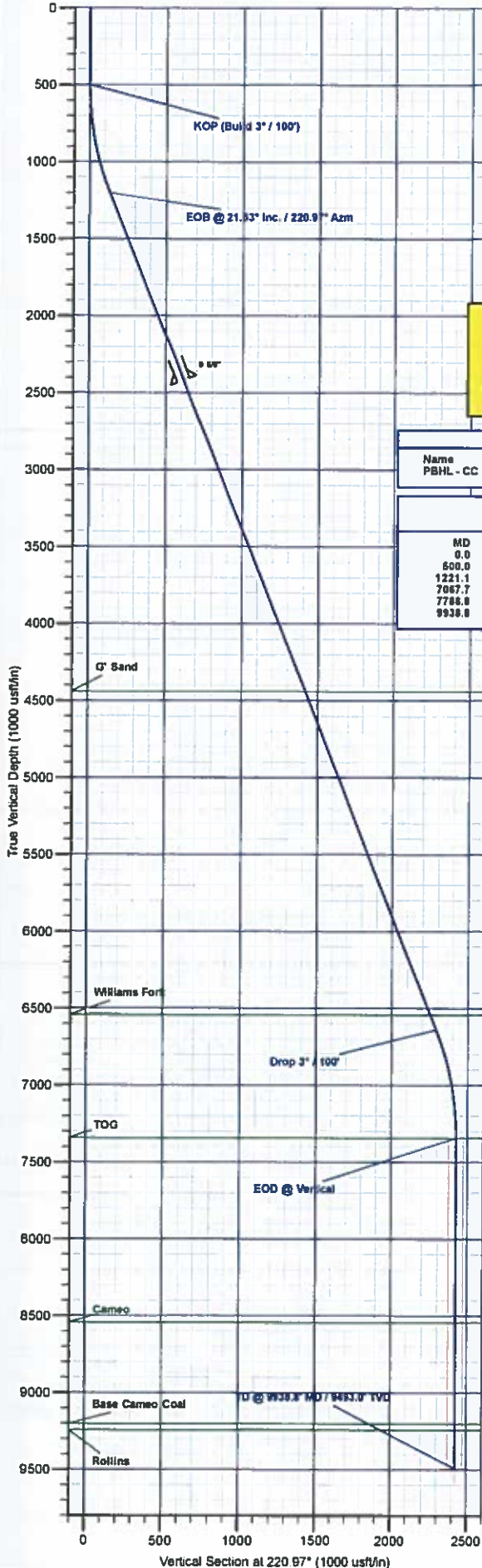


**DESIGN TARGET DETAILS**

Name	TVD	+N/-S	+E/-W	Northing	Easting	Latitude	Longitude
PBHL - CC 0697-03-17W	9493.0	-1830.6	-1589.5	1637782.64	2235748.74	39.553194	-108.210801

**SECTION DETAILS**

MD	Inc	Azi	TVD	+N/-S	+E/-W	Dleg	TFace	VSect	Annotation
0.0	0.00	0.00	0.0	0.0	0.0	0.00	0.00	0.0	
500.0	0.00	0.00	500.0	0.0	0.0	0.00	0.00	0.0	KOP (Build 3" / 100')
1221.1	21.63	220.97	1204.1	-101.5	-89.2	3.00	220.97	134.5	EOB @ 21.63° Inc. / 220.97° Azm
7067.7	21.63	220.97	6638.9	-1729.1	-1501.3	0.00	0.00	2289.9	Drop 3" / 100'
7788.8	0.00	0.00	7343.0	-1830.6	-1589.5	3.00	180.00	2424.4	EOD @ Vertical
9938.8	0.00	0.00	9493.0	-1830.6	-1589.5	0.00	0.00	2424.4	TD @ 9938.8' MD / 9493.0' TVD



Plan: Design #2 (CC 0697-03-17W/Wellbore #1)

Created By: Will Jircik Date: 13:54, October 24 2017



# **Laramie Energy, LLC**

**Garfield County, CO**

**CC 0697-03-07 Pad**

**CC 0697-03-17W**

**Wellbore #1**

**Plan: Design #2**

## **QES Well Planning Report**

**24 October, 2017**





# Well Planning Report



<b>Database:</b>	EDM 5000.1 Single User Db	<b>Local Co-ordinate Reference:</b>	Well CC 0697-03-17W
<b>Company:</b>	Laramie Energy, LLC	<b>TVD Reference:</b>	well @ 8458.0usft (30' RKB)
<b>Project:</b>	Garfield County, CO	<b>MD Reference:</b>	well @ 8458.0usft (30' RKB)
<b>Site:</b>	CC 0697-03-07 Pad	<b>North Reference:</b>	True
<b>Well:</b>	CC 0697-03-17W	<b>Survey Calculation Method:</b>	Minimum Curvature
<b>Wellbore:</b>	Wellbore #1		
<b>Design:</b>	Design #2		

<b>Project</b>	Garfield County, CO		
<b>Map System:</b>	US State Plane 1983	<b>System Datum:</b>	Mean Sea Level
<b>Geo Datum:</b>	North American Datum 1983		
<b>Map Zone:</b>	Colorado Central Zone		

<b>Site</b>	CC 0697-03-07 Pad			
<b>Site Position:</b>		<b>Northing:</b>	1,638,132.66 usft	<b>Latitude:</b> 39.554247
<b>From:</b>	Lat/Long	<b>Easting:</b>	2,236,874.96 usft	<b>Longitude:</b> -108.206835
<b>Position Uncertainty:</b>	0.0 usft	<b>Slot Radius:</b>	13-3/16"	<b>Grid Convergence:</b> -1.71°

<b>Well</b>	CC 0697-03-17W			
<b>Well Position</b>	+N/-S	1,447.2 usft	<b>Northing:</b>	1,639,565.15 usft
	+E/-W	471.1 usft	<b>Easting:</b>	2,237,389.01 usft
<b>Position Uncertainty</b>	0.0 usft	<b>Wellhead Elevation:</b>		<b>Ground Level:</b> 8,428.0 usft

<b>Wellbore</b>	Wellbore #1				
<b>Magnetics</b>	<b>Model Name</b>	<b>Sample Date</b>	<b>Declination (°)</b>	<b>Dip Angle (°)</b>	<b>Field Strength (nT)</b>
	IGRF2015	8/30/2017	9.78	65.80	51,493.66685604

<b>Design</b>	Design #2			
<b>Audit Notes:</b>				
<b>Version:</b>	<b>Phase:</b>	PLAN	<b>Tie On Depth:</b>	0.0
<b>Vertical Section:</b>	<b>Depth From (TVD) (usft)</b>	<b>+N/-S (usft)</b>	<b>+E/-W (usft)</b>	<b>Direction (°)</b>
	0.0	0.0	0.0	220.97

<b>Plan Sections</b>										
Measured Depth (usft)	Inclination (°)	Azimuth (°)	Vertical Depth (usft)	+N/-S (usft)	+E/-W (usft)	Dogleg Rate (°/100usft)	Buidl Rate (°/100usft)	Turn Rate (°/100usft)	TFO (°)	Target
0.0	0.00	0.00	0.0	0.0	0.0	0.00	0.00	0.00	0.00	
500.0	0.00	0.00	500.0	0.0	0.0	0.00	0.00	0.00	0.00	
1,221.1	21.63	220.97	1,204.1	-101.6	-88.2	3.00	3.00	0.00	220.97	
7,067.7	21.63	220.97	6,638.9	-1,729.1	-1,501.3	0.00	0.00	0.00	0.00	
7,788.8	0.00	0.00	7,343.0	-1,830.6	-1,589.5	3.00	-3.00	0.00	180.00	
9,938.8	0.00	0.00	9,493.0	-1,830.6	-1,589.5	0.00	0.00	0.00	0.00	PBHL - CC 0697-03-1





## Well Planning Report



Database: EDM 5000.1 Single User Db  
 Company: Laramie Energy, LLC  
 Project: Garfield County, CO  
 Site: CC 0697-03-07 Pad  
 Well: CC 0697-03-17W  
 Wellbore: Wellbore #1  
 Design: Design #2

Local Co-ordinate Reference:  
 TVD Reference:  
 MD Reference:  
 North Reference:  
 Survey Calculation Method:

Well CC 0697-03-17W  
 well @ 8458.0usft (30' RKB)  
 well @ 8458.0usft (30' RKB)  
 True  
 Minimum Curvature

## Planned Survey

Measured Depth (usft)	Inclination (°)	Azimuth (°)	Vertical Depth (usft)	+N/-S (usft)	+E/-W (usft)	Vertical Section (usft)	Dogleg Rate (°/100usft)	Build Rate (°/100usft)	Turn Rate (°/100usft)
0.0	0.00	0.00	0.0	0.0	0.0	0.0	0.00	0.00	0.00
100.0	0.00	0.00	100.0	0.0	0.0	0.0	0.00	0.00	0.00
200.0	0.00	0.00	200.0	0.0	0.0	0.0	0.00	0.00	0.00
300.0	0.00	0.00	300.0	0.0	0.0	0.0	0.00	0.00	0.00
400.0	0.00	0.00	400.0	0.0	0.0	0.0	0.00	0.00	0.00
<b>KOP (Build 3° / 100')</b>									
500.0	0.00	0.00	500.0	0.0	0.0	0.0	0.00	0.00	0.00
600.0	3.00	220.97	600.0	-2.0	-1.7	2.6	3.00	3.00	0.00
700.0	6.00	220.97	699.6	-7.9	-6.9	10.5	3.00	3.00	0.00
800.0	9.00	220.97	798.8	-17.8	-15.4	23.5	3.00	3.00	0.00
900.0	12.00	220.97	897.1	-31.5	-27.4	41.7	3.00	3.00	0.00
1,000.0	15.00	220.97	994.3	-49.1	-42.7	65.1	3.00	3.00	0.00
1,100.0	18.00	220.97	1,090.2	-70.6	-61.3	93.5	3.00	3.00	0.00
1,200.0	21.00	220.97	1,184.4	-95.8	-83.2	126.9	3.00	3.00	0.00
<b>EOB @ 21.63° Inc. / 220.97° Azm</b>									
1,221.1	21.63	220.97	1,204.1	-101.6	-88.2	134.5	3.00	3.00	0.00
1,300.0	21.63	220.97	1,277.4	-123.5	-107.3	163.6	0.00	0.00	0.00
1,400.0	21.63	220.97	1,370.4	-151.4	-131.4	200.5	0.00	0.00	0.00
1,500.0	21.63	220.97	1,463.3	-179.2	-155.6	237.3	0.00	0.00	0.00
1,600.0	21.63	220.97	1,556.3	-207.0	-179.8	274.2	0.00	0.00	0.00
1,700.0	21.63	220.97	1,649.3	-234.9	-203.9	311.1	0.00	0.00	0.00
1,800.0	21.63	220.97	1,742.2	-262.7	-228.1	347.9	0.00	0.00	0.00
1,900.0	21.63	220.97	1,835.2	-290.6	-252.3	384.8	0.00	0.00	0.00
2,000.0	21.63	220.97	1,928.1	-318.4	-276.4	421.7	0.00	0.00	0.00
2,100.0	21.63	220.97	2,021.1	-346.2	-300.6	458.5	0.00	0.00	0.00
2,200.0	21.63	220.97	2,114.0	-374.1	-324.8	495.4	0.00	0.00	0.00
2,300.0	21.63	220.97	2,207.0	-401.9	-349.0	532.3	0.00	0.00	0.00
2,400.0	21.63	220.97	2,300.0	-429.7	-373.1	569.1	0.00	0.00	0.00
2,500.0	21.63	220.97	2,392.9	-457.6	-397.3	606.0	0.00	0.00	0.00
<b>9 5/8"</b>									
2,530.0	21.63	220.97	2,420.8	-465.9	-404.5	617.0	0.00	0.00	0.00
2,600.0	21.63	220.97	2,485.9	-485.4	-421.5	642.9	0.00	0.00	0.00
2,700.0	21.63	220.97	2,578.8	-513.3	-445.6	679.7	0.00	0.00	0.00
2,800.0	21.63	220.97	2,671.8	-541.1	-469.8	716.6	0.00	0.00	0.00
2,900.0	21.63	220.97	2,764.7	-568.9	-494.0	753.4	0.00	0.00	0.00
3,000.0	21.63	220.97	2,857.7	-596.8	-518.1	790.3	0.00	0.00	0.00
3,100.0	21.63	220.97	2,950.7	-624.6	-542.3	827.2	0.00	0.00	0.00
3,200.0	21.63	220.97	3,043.6	-652.4	-566.5	864.0	0.00	0.00	0.00
3,300.0	21.63	220.97	3,136.6	-680.3	-590.6	900.9	0.00	0.00	0.00
3,400.0	21.63	220.97	3,229.5	-708.1	-614.8	937.8	0.00	0.00	0.00
3,500.0	21.63	220.97	3,322.5	-735.9	-639.0	974.6	0.00	0.00	0.00
3,600.0	21.63	220.97	3,415.4	-763.8	-663.2	1,011.5	0.00	0.00	0.00
3,700.0	21.63	220.97	3,508.4	-791.6	-687.3	1,048.4	0.00	0.00	0.00
3,800.0	21.63	220.97	3,601.4	-819.5	-711.5	1,085.2	0.00	0.00	0.00
3,900.0	21.63	220.97	3,694.3	-847.3	-735.7	1,122.1	0.00	0.00	0.00
4,000.0	21.63	220.97	3,787.3	-875.1	-759.8	1,159.0	0.00	0.00	0.00
4,100.0	21.63	220.97	3,880.2	-903.0	-784.0	1,195.8	0.00	0.00	0.00
4,200.0	21.63	220.97	3,973.2	-930.8	-808.2	1,232.7	0.00	0.00	0.00
4,300.0	21.63	220.97	4,066.1	-958.6	-832.3	1,269.6	0.00	0.00	0.00
4,400.0	21.63	220.97	4,159.1	-986.5	-856.5	1,306.4	0.00	0.00	0.00
4,500.0	21.63	220.97	4,252.1	-1,014.3	-880.7	1,343.3	0.00	0.00	0.00
4,600.0	21.63	220.97	4,345.0	-1,042.1	-904.8	1,380.2	0.00	0.00	0.00
4,700.0	21.63	220.97	4,438.0	-1,070.0	-929.0	1,417.0	0.00	0.00	0.00



# Well Planning Report



<b>Database:</b>	EDM 5000 1 Single User Db	<b>Local Co-ordinate Reference:</b>	Well CC 0897-03-17W
<b>Company:</b>	Laramie Energy, LLC	<b>TVD Reference:</b>	well @ 8458.0usft (30' RKB)
<b>Project:</b>	Garfield County, CO	<b>MD Reference:</b>	well @ 8458.0usft (30' RKB)
<b>Site:</b>	CC 0897-03-07 Pad	<b>North Reference:</b>	True
<b>Well:</b>	CC 0897-03-17W	<b>Survey Calculation Method:</b>	Minimum Curvature
<b>Wellbore:</b>	Wellbore #1		
<b>Design:</b>	Design #2		

## Planned Survey

Measured Depth (usft)	Inclination (°)	Azimuth (°)	Vertical Depth (usft)	+N/-S (usft)	+E/-W (usft)	Vertical Section (usft)	Dogleg Rate (°/100usft)	Build Rate (°/100usft)	Turn Rate (°/100usft)
<b>G' Sand</b>									
4,705.4	21.63	220.97	4,443.0	-1,071.5	-930.3	1,419.0	0.00	0.00	0.00
4,800.0	21.63	220.97	4,530.9	-1,097.8	-953.2	1,453.9	0.00	0.00	0.00
4,900.0	21.63	220.97	4,623.9	-1,125.7	-977.4	1,490.7	0.00	0.00	0.00
5,000.0	21.63	220.97	4,716.8	-1,153.5	-1,001.5	1,527.6	0.00	0.00	0.00
5,100.0	21.63	220.97	4,809.8	-1,181.3	-1,025.7	1,564.5	0.00	0.00	0.00
5,200.0	21.63	220.97	4,902.7	-1,209.2	-1,049.9	1,601.3	0.00	0.00	0.00
5,300.0	21.63	220.97	4,995.7	-1,237.0	-1,074.0	1,638.2	0.00	0.00	0.00
5,400.0	21.63	220.97	5,088.7	-1,264.8	-1,098.2	1,675.1	0.00	0.00	0.00
5,500.0	21.63	220.97	5,181.6	-1,292.7	-1,122.4	1,711.9	0.00	0.00	0.00
5,600.0	21.63	220.97	5,274.6	-1,320.5	-1,146.5	1,748.8	0.00	0.00	0.00
5,700.0	21.63	220.97	5,367.5	-1,348.3	-1,170.7	1,785.7	0.00	0.00	0.00
5,800.0	21.63	220.97	5,460.5	-1,376.2	-1,194.9	1,822.5	0.00	0.00	0.00
5,900.0	21.63	220.97	5,553.4	-1,404.0	-1,219.1	1,859.4	0.00	0.00	0.00
6,000.0	21.63	220.97	5,646.4	-1,431.9	-1,243.2	1,896.3	0.00	0.00	0.00
6,100.0	21.63	220.97	5,739.4	-1,459.7	-1,267.4	1,933.1	0.00	0.00	0.00
6,200.0	21.63	220.97	5,832.3	-1,487.5	-1,291.6	1,970.0	0.00	0.00	0.00
6,300.0	21.63	220.97	5,925.3	-1,515.4	-1,315.7	2,006.9	0.00	0.00	0.00
6,400.0	21.63	220.97	6,018.2	-1,543.2	-1,339.9	2,043.7	0.00	0.00	0.00
6,500.0	21.63	220.97	6,111.2	-1,571.0	-1,364.1	2,080.6	0.00	0.00	0.00
6,600.0	21.63	220.97	6,204.1	-1,598.9	-1,388.2	2,117.4	0.00	0.00	0.00
6,700.0	21.63	220.97	6,297.1	-1,626.7	-1,412.4	2,154.3	0.00	0.00	0.00
6,800.0	21.63	220.97	6,390.1	-1,654.5	-1,436.6	2,191.2	0.00	0.00	0.00
6,900.0	21.63	220.97	6,483.0	-1,682.4	-1,460.7	2,228.0	0.00	0.00	0.00
<b>Williams Fork</b>									
6,964.5	21.63	220.97	6,543.0	-1,700.3	-1,476.3	2,251.8	0.00	0.00	0.00
7,000.0	21.63	220.97	6,576.0	-1,710.2	-1,484.9	2,264.9	0.00	0.00	0.00
<b>Drop 3° / 100'</b>									
7,067.7	21.63	220.97	6,638.9	-1,729.1	-1,501.3	2,289.9	0.00	0.00	0.00
7,100.0	20.66	220.97	6,669.0	-1,737.9	-1,508.9	2,301.5	3.00	-3.00	0.00
7,200.0	17.66	220.97	6,763.5	-1,762.6	-1,530.4	2,334.3	3.00	-3.00	0.00
7,300.0	14.66	220.97	6,859.5	-1,783.7	-1,548.7	2,362.2	3.00	-3.00	0.00
7,400.0	11.66	220.97	6,956.9	-1,800.9	-1,563.6	2,385.0	3.00	-3.00	0.00
7,500.0	8.66	220.97	7,055.3	-1,814.2	-1,575.2	2,402.6	3.00	-3.00	0.00
7,600.0	5.66	220.97	7,154.5	-1,823.6	-1,583.4	2,415.1	3.00	-3.00	0.00
7,700.0	2.66	220.97	7,254.2	-1,829.1	-1,588.1	2,422.3	3.00	-3.00	0.00
<b>EOD @ Vertical - TOG</b>									
7,788.8	0.00	0.00	7,343.0	-1,830.6	-1,589.5	2,424.4	3.00	-3.00	0.00
7,800.0	0.00	0.00	7,354.2	-1,830.6	-1,589.5	2,424.4	0.00	0.00	0.00
7,900.0	0.00	0.00	7,454.2	-1,830.6	-1,589.5	2,424.4	0.00	0.00	0.00
8,000.0	0.00	0.00	7,554.2	-1,830.6	-1,589.5	2,424.4	0.00	0.00	0.00
8,100.0	0.00	0.00	7,654.2	-1,830.6	-1,589.5	2,424.4	0.00	0.00	0.00
8,200.0	0.00	0.00	7,754.2	-1,830.6	-1,589.5	2,424.4	0.00	0.00	0.00
8,300.0	0.00	0.00	7,854.2	-1,830.6	-1,589.5	2,424.4	0.00	0.00	0.00
8,400.0	0.00	0.00	7,954.2	-1,830.6	-1,589.5	2,424.4	0.00	0.00	0.00
8,500.0	0.00	0.00	8,054.2	-1,830.6	-1,589.5	2,424.4	0.00	0.00	0.00
8,600.0	0.00	0.00	8,154.2	-1,830.6	-1,589.5	2,424.4	0.00	0.00	0.00
8,700.0	0.00	0.00	8,254.2	-1,830.6	-1,589.5	2,424.4	0.00	0.00	0.00
8,800.0	0.00	0.00	8,354.2	-1,830.6	-1,589.5	2,424.4	0.00	0.00	0.00
8,900.0	0.00	0.00	8,454.2	-1,830.6	-1,589.5	2,424.4	0.00	0.00	0.00
<b>Cameo</b>									
8,988.8	0.00	0.00	8,543.0	-1,830.6	-1,589.5	2,424.4	0.00	0.00	0.00
9,000.0	0.00	0.00	8,554.2	-1,830.6	-1,589.5	2,424.4	0.00	0.00	0.00
9,100.0	0.00	0.00	8,654.2	-1,830.6	-1,589.5	2,424.4	0.00	0.00	0.00



# Well Planning Report



<b>Database:</b>	EDM 5000 1 Single User Db	<b>Local Co-ordinate Reference:</b>	Well CC 0697-03-17W
<b>Company:</b>	Laramie Energy, LLC	<b>TVD Reference:</b>	well @ 8458 0usft (30' RKB)
<b>Project:</b>	Garfield County, CO	<b>MD Reference:</b>	well @ 8458 0usft (30' RKB)
<b>Site:</b>	CC 0697-03-07 Pad	<b>North Reference:</b>	True
<b>Well:</b>	CC 0697-03-17W	<b>Survey Calculation Method:</b>	Minimum Curvature
<b>Wellbore:</b>	Wellbore #1		
<b>Design:</b>	Design #2		

## Planned Survey

Measured Depth (usft)	Inclination (°)	Azimuth (°)	Vertical Depth (usft)	+N/-S (usft)	+E/-W (usft)	Vertical Section (usft)	Dogleg Rate (°/100usft)	Build Rate (°/100usft)	Turn Rate (°/100usft)
9,200.0	0.00	0.00	8,754.2	-1,830.6	-1,589.5	2,424.4	0.00	0.00	0.00
9,300.0	0.00	0.00	8,854.2	-1,830.6	-1,589.5	2,424.4	0.00	0.00	0.00
9,400.0	0.00	0.00	8,954.2	-1,830.6	-1,589.5	2,424.4	0.00	0.00	0.00
9,500.0	0.00	0.00	9,054.2	-1,830.6	-1,589.5	2,424.4	0.00	0.00	0.00
9,600.0	0.00	0.00	9,154.2	-1,830.6	-1,589.5	2,424.4	0.00	0.00	0.00
<b>Base Cameo Coal</b>									
9,648.8	0.00	0.00	9,203.0	-1,830.6	-1,589.5	2,424.4	0.00	0.00	0.00
<b>Rollins</b>									
9,688.8	0.00	0.00	9,243.0	-1,830.6	-1,589.5	2,424.4	0.00	0.00	0.00
9,700.0	0.00	0.00	9,254.2	-1,830.6	-1,589.5	2,424.4	0.00	0.00	0.00
9,800.0	0.00	0.00	9,354.2	-1,830.6	-1,589.5	2,424.4	0.00	0.00	0.00
9,900.0	0.00	0.00	9,454.2	-1,830.6	-1,589.5	2,424.4	0.00	0.00	0.00
<b>TD @ 9938.8' MD / 9493.0' TVD</b>									
9,938.8	0.00	0.00	9,493.0	-1,830.6	-1,589.5	2,424.4	0.00	0.00	0.00

## Design Targets

Target Name	Dip Angle (°)	Dip Dir. (°)	TVD (usft)	+N/-S (usft)	+E/-W (usft)	Northing (usft)	Easting (usft)	Latitude	Longitude
- hit/miss target									
- Shape									
PBHL - CC 0697-03-17V	0.00	0.00	9,493.0	-1,830.6	-1,589.5	1,637,782.64	2,235,745.74	39.553194	-108.210801
- plan hits target center									
- Circle (radius 50.0)									

## Casing Points

Measured Depth (usft)	Vertical Depth (usft)	Name	Casing Diameter (")	Hole Diameter (")
2,530.0	2,420.8	9 5/8"	9-5/8	12-1/4

## Formations

Measured Depth (usft)	Vertical Depth (usft)	Name	Lithology	Dip (°)	Dip Direction (°)
4,705.4	4,443.0	G' Sand			
6,964.5	6,543.0	Williams Fork			
7,788.8	7,343.0	TOG			
8,988.8	8,543.0	Cameo			
9,648.8	9,203.0	Base Cameo Coal			
9,688.8	9,243.0	Rollins			



# Well Planning Report



Database:	EDM 5000 1 Single User Db	Local Co-ordinate Reference:	Well CC 0697-03-17W
Company:	Laramie Energy, LLC	TVD Reference:	well @ 8458.0usft (30' RKB)
Project:	Garfield County, CO	MD Reference:	well @ 8458.0usft (30' RKB)
Site:	CC 0697-03-07 Pad	North Reference:	True
Well:	CC 0697-03-17W	Survey Calculation Method:	Minimum Curvature
Wellbore:	Wellbore #1		
Design:	Design #2		

## Plan Annotations

Measured Depth (usft)	Vertical Depth (usft)	Local Coordinates		Comment
		+N/-S (usft)	+E/-W (usft)	
500.0	500.0	0.0	0.0	KOP (Build 3" / 100')
1,221.1	1,204.1	-101.6	-88.2	EOB @ 21.63° Inc. / 220.97° Azm
7,067.7	6,638.9	-1,729.1	-1,501.3	Drop 3" / 100'
7,788.8	7,343.0	-1,830.6	-1,589.5	EOD @ Vertical
9,938.8	9,493.0	-1,830.6	-1,589.5	TD @ 9938.8' MD / 9493.0' TVD