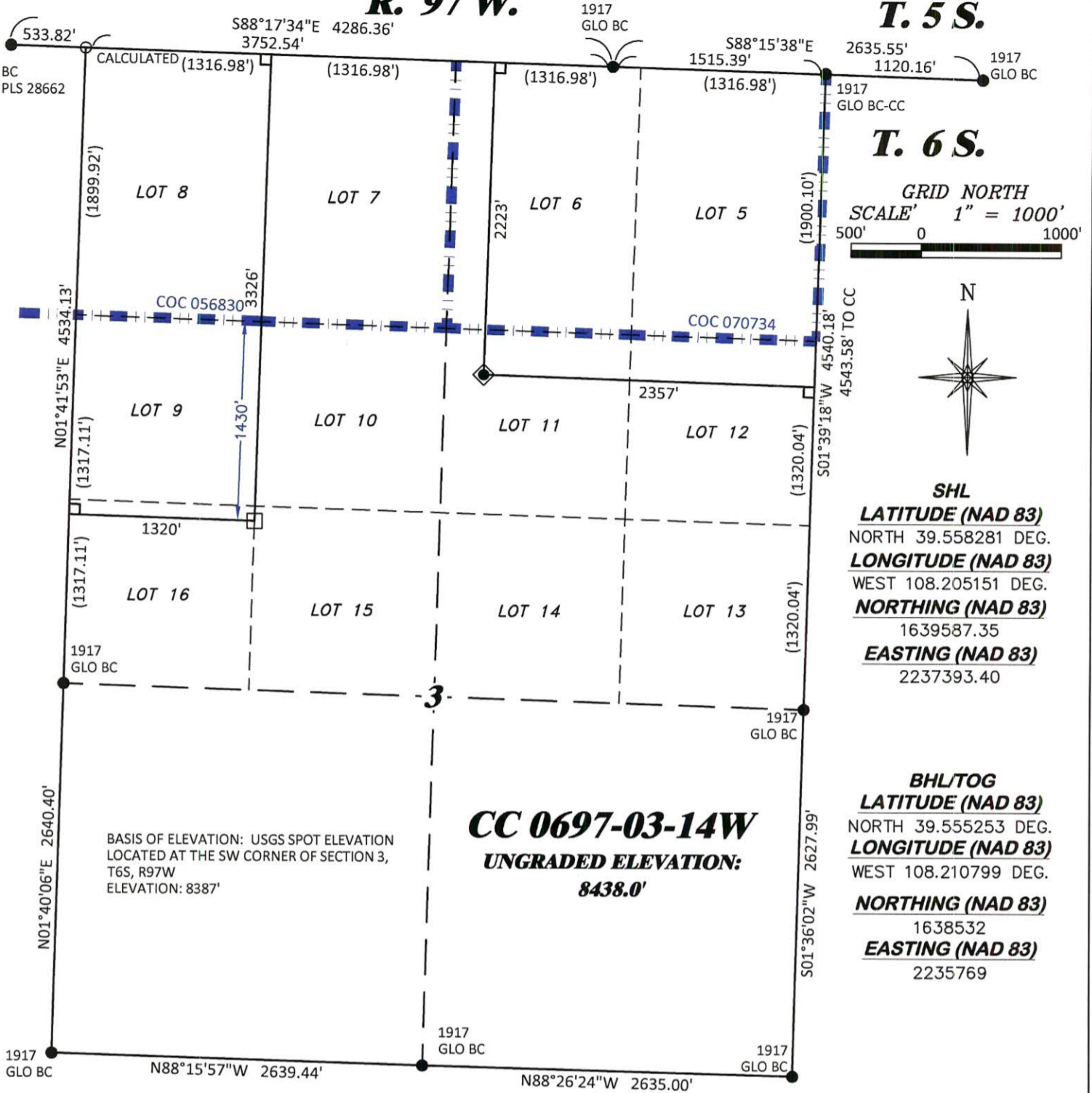


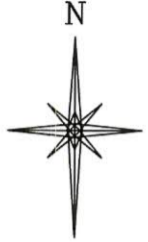
R. 97 W.

T. 5 S.

T. 6 S.



GRID NORTH  
 SCALE' 1" = 1000'  
 500' 0 1000'



SHL  
**LATITUDE (NAD 83)**  
 NORTH 39.558281 DEG.  
**LONGITUDE (NAD 83)**  
 WEST 108.205151 DEG.  
**NORTHING (NAD 83)**  
 1639587.35  
**EASTING (NAD 83)**  
 2237393.40

BHL/TOG  
**LATITUDE (NAD 83)**  
 NORTH 39.555253 DEG.  
**LONGITUDE (NAD 83)**  
 WEST 108.210799 DEG.  
**NORTHING (NAD 83)**  
 1638532  
**EASTING (NAD 83)**  
 2235769

**CC 0697-03-14W**  
**UNGRADED ELEVATION:**  
**8438.0'**

BASIS OF ELEVATION: USGS SPOT ELEVATION  
 LOCATED AT THE SW CORNER OF SECTION 3,  
 T6S, R97W  
 ELEVATION: 8387'

**NOTES**

1. GPS OPERATOR T. SHERRILL OBSERVED A PDOP OF 1.3.
2. ALL GPS OBSERVATIONS ARE IN COMPLIANCE WITH COGCC RULE No.215.
3. NO EXISTING IMPROVEMENTS WITHIN 500' OF LOCATION. SEE LOCATION DRAWING.
4. SURROUNDING SURFACE USE IS NATIVE BRUSH, NON CROP RANGELAND.

**BASIS OF BEARING/DATUM**

SPCS COLORADO CENTRAL NAD 27 BASED ON GPS OBSERVATIONS  
 AND OPUS SOLUTION ON DRG CONTROL POINT "WILLIAMS"  
 HAVING A POSITION OF:  
 NAD83(2011)  
 LAT 39° 31' 35.18" NORTH  
 LONG 108° 12' 16.79" WEST  
 NAVD88 ELEVATION: 8618.14'

THE SOUTH LINE OF THE SW¼ OF  
 SECTION 3, MONUMENTED BY BLM BC'S AND BEARING  
 N 88°15'57" W.

**SURVEYOR'S STATEMENT**

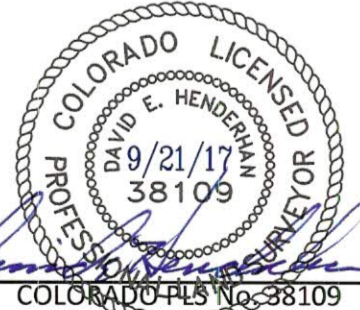
I, DAVID E. HENDERHAN, AN EMPLOYEE AND AGENT ON BEHALF OF D.R. GRIFFIN & ASSOCIATES, INC.  
 STATE THE PLAT HEREON IS A CORRECT REPRESENTATION OF A SURVEY MADE UNDER MY SUPERVISION  
 ON THE 23rd DAY OF JUNE, 2017 OF THE SHOWN CC 0697-03-14W AND THAT THE LOCATION HAS BEEN  
 STAKED ON THE GROUND AS SHOWN ON THIS PLAT.

Notice: In accordance with Colorado State Law, any legal action based upon any defect in this  
 survey plat must commence within three (3) years after first discovery of such defect. In no  
 event, may any action based upon any defect in this survey plat be commenced more than  
 ten (10) years from the date of certification shown hereon.

CC 0697-03-07 PAD

**LEGEND**

- ◆ WELL LOCATION
- APPROX. BHL
- L DENOTES 90° TIE
- FOUND MONUMENT
- CALCULATED CORNER
- ▬▬▬▬ BLM LEASE LINE



COLORADO PLS No. 38109

**DRG** GRIFFIN & ASSOCIATES, INC.  
 (307) 362-5028 1414 ELK ST., ROCK SPRINGS, WY 82901

DRAWN: 9/19/2017 - TCM	SCALE: 1" = 1000'
REVISED: N/A - .	DRG JOB No. 21295
	B9 03-14W

**PLAT OF DRILLING LOCATION IN  
 LOT 11, SECTION 3, FOR  
 LARAMIE ENERGY, LLC.**

**2223' F/NL, & 2357' F/EL, SECTION 3,  
 T. 6 S., R. 97 W., 6TH P.M.,  
 GARFIELD COUNTY, COLORADO**