

**PROJECT DETAILS: Garfield County, CO**

Geodetic System: US State Plane 1983  
 Datum: North American Datum 1983  
 Ellipsoid: GRS 1980  
 Zone: Colorado Central Zone  
 System Datum: Mean Sea Level

**WELL DETAILS: CC 0697-03-14E**

+N/-S 0.0 +E/-W 0.0 Northing 1639566.50 Easting 2237403.15 8428.0 Latitude 39.558277 Longitude -108.205116

Project: Garfield County, CO  
 Site: CC 0697-03-07 Pad  
 Well: CC 0697-03-14E  
 Wellbore: Wellbore #1  
 Design: Design #2  
 Latitude: 39.558277  
 Longitude: -108.205116  
 Ground Level: 8428.0  
 well @ 8458.0ustf (30' RKB)



**REFERENCE INFORMATION**

Co-ordinate (N/E) Reference: Well CC 0697-03-14E, True North  
 Vertical (TVD) Reference: well @ 8458.0ustf (30' RKB)  
 Section (VS) Reference: Slot - (0.0N, 0.0E)  
 Measured Depth Reference: well @ 8458.0ustf (30' RKB)  
 Calculation Method: Minimum Curvature

**Compass Diagram**

↑ T  
 ↓ M  
 ↗ A

Azimuths to True North  
 Magnetic North: 9.78°

Magnetic Field  
 Strength: 51493 TnT  
 Dip Angle: 86.60°  
 Date: 8/30/2017  
 Model: IGRF2015

**FORMATION TOP DETAILS**

TVDPath	MDPath	Formation
4603.0	4703.4	G' Sand
6703.0	6858.7	Williams Fork
7503.0	7672.2	TOG
8703.0	8872.2	Cameo
9363.0	9532.2	Base Cameo Coal
9403.0	9572.2	Rollins

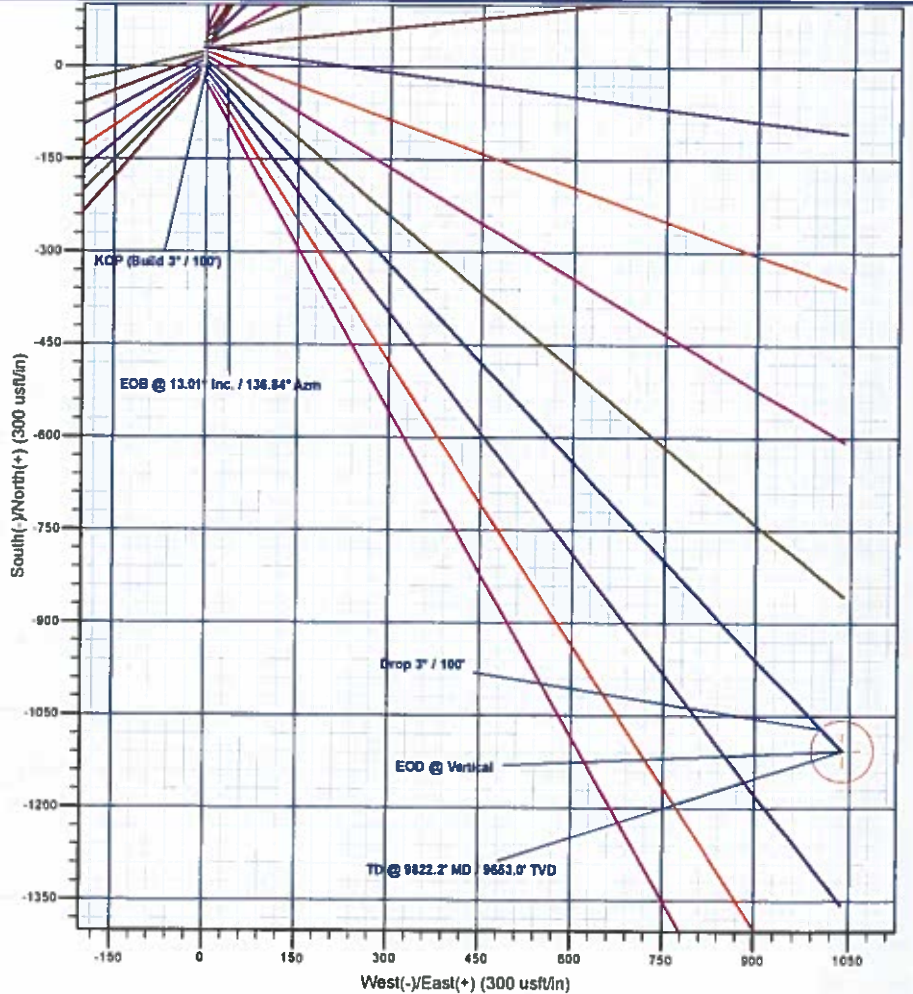
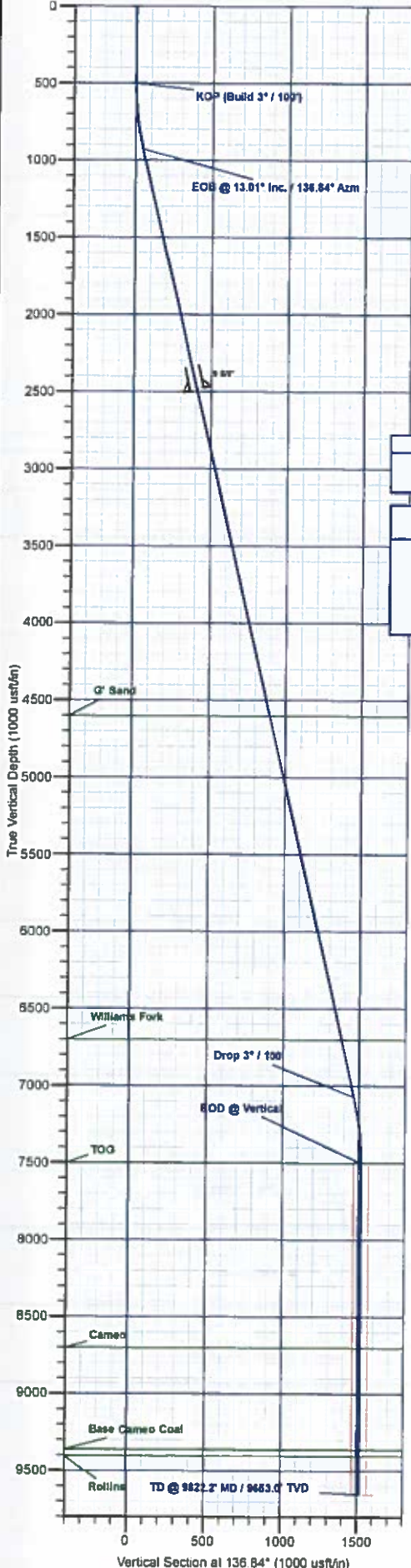


**DESIGN TARGET DETAILS**

Name	TVD	+N/-S	+E/-W	Northing	Easting	Latitude	Longitude
PBHL - CC 0697-03-14E	9853.0	-1106.6	1037.6	1638448.55	2238407.37	39.555239	-108.201436

**SECTION DETAILS**

MD	Inc	Azi	TVD	+N/-S	+E/-W	Ddeg	TFace	Vsect	Annotation
0.0	0.00	0.00	0.0	0.0	0.0	0.00	0.00	0.0	
500.0	0.00	0.00	500.0	0.0	0.0	0.00	0.00	0.0	KOP (Build 3' / 100')
933.5	13.01	136.84	929.0	-35.7	33.6	3.00	136.84	49.0	EOB @ 13.01° Inc. / 136.84° Azm
7238.6	13.01	136.84	7073.2	-1070.3	1004.1	0.00	0.00	1466.0	Drop 3' / 100'
7872.2	0.00	0.00	7503.0	-1106.6	1037.6	3.00	180.00	1516.9	EOD @ Vertical
9822.2	0.00	0.00	9653.0	-1106.6	1037.6	0.00	0.00	1516.9	TD @ 9822.2' MD / 9653.0' TVD



Plan: Design #2 (CC 0697-03-14E/Wellbore #1)

Created By: Will Jircik Date: 11:06, October 24 2017



## **Laramie Energy, LLC**

**Garfield County, CO**

**CC 0697-03-07 Pad**

**CC 0697-03-14E**

**Wellbore #1**

**Plan: Design #2**

## **QES Well Planning Report**

**24 October, 2017**





Well Planning Report



<b>Database:</b>	EDM 5000.1 Single User Db	<b>Local Co-ordinate Reference:</b>	Well CC 0697-03-14E
<b>Company:</b>	Laramie Energy, LLC	<b>TVD Reference:</b>	well @ 8458.0usft (30' RKB)
<b>Project:</b>	Garfield County, CO	<b>MD Reference:</b>	well @ 8458.0usft (30' RKB)
<b>Site:</b>	CC 0697-03-07 Pad	<b>North Reference:</b>	True
<b>Well:</b>	CC 0697-03-14E	<b>Survey Calculation Method:</b>	Minimum Curvature
<b>Wellbore:</b>	Wellbore #1		
<b>Design:</b>	Design #2		

<b>Project</b>	Garfield County, CO		
<b>Map System:</b>	US State Plane 1983	<b>System Datum:</b>	Mean Sea Level
<b>Geo Datum:</b>	North American Datum 1983		
<b>Map Zone:</b>	Colorado Central Zone		

<b>Site</b>	CC 0697-03-07 Pad				
<b>Site Position:</b>		<b>Northing:</b>	1,638,132.66 usft	<b>Latitude:</b>	39.554247
<b>From:</b>	Lat/Long	<b>Easting:</b>	2,236,874.96 usft	<b>Longitude:</b>	-108.206835
<b>Position Uncertainty:</b>	0.0 usft	<b>Slot Radius:</b>	13-3/16 "	<b>Grid Convergence:</b>	-1.71 "

<b>Well</b>	CC 0697-03-14E					
<b>Well Position</b>	+N/-S	1,467.9 usft	<b>Northing:</b>	1,639,585.50 usft	<b>Latitude:</b>	39.558277
	+E/-W	484.7 usft	<b>Easting:</b>	2,237,403.15 usft	<b>Longitude:</b>	-108.205116
<b>Position Uncertainty</b>		0.0 usft	<b>Wellhead Elevation:</b>		<b>Ground Level:</b>	8,428.0 usft

<b>Wellbore</b>	Wellbore #1				
<b>Magnetics</b>	<b>Model Name</b>	<b>Sample Date</b>	<b>Declination (°)</b>	<b>Dip Angle (°)</b>	<b>Field Strength (nT)</b>
	IGRF2015	8/30/2017	9.78	65.60	51,493.70363274

<b>Design</b>	Design #2			
<b>Audit Notes:</b>				
<b>Version:</b>	<b>Phase:</b>	PLAN	<b>Tie On Depth:</b>	0.0
<b>Vertical Section:</b>	<b>Depth From (TVD) (usft)</b>	<b>+N/-S (usft)</b>	<b>+E/-W (usft)</b>	<b>Direction (°)</b>
	0.0	0.0	0.0	136.84

<b>Plan Sections</b>										
Measured Depth (usft)	Inclination (°)	Azimuth (°)	Vertical Depth (usft)	+N/-S (usft)	+E/-W (usft)	Dogleg Rate (°/100usft)	Build Rate (°/100usft)	Turn Rate (°/100usft)	TFO (°)	Target
0.0	0.00	0.00	0.0	0.0	0.0	0.00	0.00	0.00	0.00	
500.0	0.00	0.00	500.0	0.0	0.0	0.00	0.00	0.00	0.00	
933.5	13.01	136.84	929.8	-35.7	33.5	3.00	3.00	0.00	136.84	
7,238.6	13.01	136.84	7,073.2	-1,070.8	1,004.1	0.00	0.00	0.00	0.00	
7,672.2	0.00	0.00	7,503.0	-1,106.6	1,037.6	3.00	-3.00	0.00	180.00	
9,822.2	0.00	0.00	9,653.0	-1,106.6	1,037.6	0.00	0.00	0.00	0.00	PBHL - CC 0697-03-1



Well Planning Report



<b>Database:</b>	EDM 5000.1 Single User Db	<b>Local Co-ordinate Reference:</b>	Well CC 0697-03-14E
<b>Company:</b>	Laramie Energy, LLC	<b>TVD Reference:</b>	well @ 8458.0usft (30' RKB)
<b>Project:</b>	Garfield County, CO	<b>MD Reference:</b>	well @ 8458.0usft (30' RKB)
<b>Site:</b>	CC 0697-03-07 Pad	<b>North Reference:</b>	True
<b>Well:</b>	CC 0697-03-14E	<b>Survey Calculation Method:</b>	Minimum Curvature
<b>Wellbore:</b>	Wellbore #1		
<b>Design:</b>	Design #2		

Planned Survey

Measured Depth (usft)	Inclination (°)	Azimuth (°)	Vertical Depth (usft)	+N/-S (usft)	+E/-W (usft)	Vertical Section (usft)	Dogleg Rate (°/100usft)	Build Rate (°/100usft)	Turn Rate (°/100usft)
0.0	0.00	0.00	0.0	0.0	0.0	0.0	0.00	0.00	0.00
100.0	0.00	0.00	100.0	0.0	0.0	0.0	0.00	0.00	0.00
200.0	0.00	0.00	200.0	0.0	0.0	0.0	0.00	0.00	0.00
300.0	0.00	0.00	300.0	0.0	0.0	0.0	0.00	0.00	0.00
400.0	0.00	0.00	400.0	0.0	0.0	0.0	0.00	0.00	0.00
<b>KOP (Build 3° / 100')</b>									
500.0	0.00	0.00	500.0	0.0	0.0	0.0	0.00	0.00	0.00
600.0	3.00	136.84	600.0	-1.9	1.8	2.6	3.00	3.00	0.00
700.0	6.00	136.84	699.6	-7.6	7.2	10.5	3.00	3.00	0.00
800.0	9.00	136.84	798.8	-17.2	16.1	23.5	3.00	3.00	0.00
900.0	12.00	136.84	897.1	-30.4	28.5	41.7	3.00	3.00	0.00
<b>EOB @ 13.01° Inc. / 136.84° Azm</b>									
933.5	13.01	136.84	929.8	-35.7	33.5	49.0	3.00	3.00	0.00
1,000.0	13.01	136.84	994.6	-46.7	43.7	64.0	0.00	0.00	0.00
1,100.0	13.01	136.84	1,092.0	-63.1	59.1	86.5	0.00	0.00	0.00
1,200.0	13.01	136.84	1,189.5	-79.5	74.5	109.0	0.00	0.00	0.00
1,300.0	13.01	136.84	1,286.9	-95.9	89.9	131.5	0.00	0.00	0.00
1,400.0	13.01	136.84	1,384.3	-112.3	105.3	154.0	0.00	0.00	0.00
1,500.0	13.01	136.84	1,481.8	-128.7	120.7	176.5	0.00	0.00	0.00
1,600.0	13.01	136.84	1,579.2	-145.1	136.1	199.0	0.00	0.00	0.00
1,700.0	13.01	136.84	1,676.6	-161.6	151.5	221.5	0.00	0.00	0.00
1,800.0	13.01	136.84	1,774.1	-178.0	166.9	244.0	0.00	0.00	0.00
1,900.0	13.01	136.84	1,871.5	-194.4	182.3	266.5	0.00	0.00	0.00
2,000.0	13.01	136.84	1,968.9	-210.8	197.7	289.0	0.00	0.00	0.00
2,100.0	13.01	136.84	2,066.4	-227.2	213.1	311.5	0.00	0.00	0.00
2,200.0	13.01	136.84	2,163.8	-243.6	228.5	334.0	0.00	0.00	0.00
2,300.0	13.01	136.84	2,261.2	-260.1	243.9	356.5	0.00	0.00	0.00
2,400.0	13.01	136.84	2,358.7	-276.5	259.3	379.0	0.00	0.00	0.00
2,500.0	13.01	136.84	2,456.1	-292.9	274.7	401.5	0.00	0.00	0.00
<b>9 5/8"</b>									
2,530.0	13.01	136.84	2,485.3	-297.8	279.3	408.3	0.00	0.00	0.00
2,600.0	13.01	136.84	2,553.5	-309.3	290.0	424.0	0.00	0.00	0.00
2,700.0	13.01	136.84	2,651.0	-325.7	305.4	446.5	0.00	0.00	0.00
2,800.0	13.01	136.84	2,748.4	-342.1	320.8	469.0	0.00	0.00	0.00
2,900.0	13.01	136.84	2,845.8	-358.6	336.2	491.5	0.00	0.00	0.00
3,000.0	13.01	136.84	2,943.3	-375.0	351.6	514.0	0.00	0.00	0.00
3,100.0	13.01	136.84	3,040.7	-391.4	367.0	536.6	0.00	0.00	0.00
3,200.0	13.01	136.84	3,138.1	-407.8	382.4	559.1	0.00	0.00	0.00
3,300.0	13.01	136.84	3,235.6	-424.2	397.8	581.6	0.00	0.00	0.00
3,400.0	13.01	136.84	3,333.0	-440.6	413.2	604.1	0.00	0.00	0.00
3,500.0	13.01	136.84	3,430.5	-457.1	428.6	626.6	0.00	0.00	0.00
3,600.0	13.01	136.84	3,527.9	-473.5	444.0	649.1	0.00	0.00	0.00
3,700.0	13.01	136.84	3,625.3	-489.9	459.4	671.6	0.00	0.00	0.00
3,800.0	13.01	136.84	3,722.8	-506.3	474.8	694.1	0.00	0.00	0.00
3,900.0	13.01	136.84	3,820.2	-522.7	490.2	716.6	0.00	0.00	0.00
4,000.0	13.01	136.84	3,917.6	-539.1	505.6	739.1	0.00	0.00	0.00
4,100.0	13.01	136.84	4,015.1	-555.6	521.0	761.6	0.00	0.00	0.00
4,200.0	13.01	136.84	4,112.5	-572.0	536.3	784.1	0.00	0.00	0.00
4,300.0	13.01	136.84	4,209.9	-588.4	551.7	806.6	0.00	0.00	0.00
4,400.0	13.01	136.84	4,307.4	-604.8	567.1	829.1	0.00	0.00	0.00
4,500.0	13.01	136.84	4,404.8	-621.2	582.5	851.6	0.00	0.00	0.00
4,600.0	13.01	136.84	4,502.2	-637.6	597.9	874.1	0.00	0.00	0.00
4,700.0	13.01	136.84	4,599.7	-654.1	613.3	896.6	0.00	0.00	0.00



Well Planning Report



<b>Database:</b>	EDM 5000.1 Single User Db	<b>Local Co-ordinate Reference:</b>	Well CC 0697-03-14E
<b>Company:</b>	Laramie Energy, LLC	<b>TVD Reference:</b>	well @ 8458.0usft (30' RKB)
<b>Project:</b>	Garfield County, CO	<b>MD Reference:</b>	well @ 8458.0usft (30' RKB)
<b>Site:</b>	CC 0697-03-07 Pad	<b>North Reference:</b>	True
<b>Well:</b>	CC 0697-03-14E	<b>Survey Calculation Method:</b>	Minimum Curvature
<b>Wellbore:</b>	Wellbore #1		
<b>Design:</b>	Design #2		

Planned Survey

Measured Depth (usft)	Inclination (°)	Azimuth (°)	Vertical Depth (usft)	+N/-S (usft)	+E/-W (usft)	Vertical Section (usft)	Dogleg Rate (°/100usft)	Build Rate (°/100usft)	Turn Rate (°/100usft)
<b>G' Sand</b>									
4,703.4	13.01	136.84	4,603.0	-654.6	613.8	897.4	0.00	0.00	0.00
4,800.0	13.01	136.84	4,697.1	-670.5	628.7	919.1	0.00	0.00	0.00
4,900.0	13.01	136.84	4,794.5	-686.9	844.1	941.6	0.00	0.00	0.00
5,000.0	13.01	136.84	4,892.0	-703.3	659.5	964.1	0.00	0.00	0.00
5,100.0	13.01	136.84	4,989.4	-719.7	674.9	986.7	0.00	0.00	0.00
5,200.0	13.01	136.84	5,086.8	-736.1	690.3	1,009.2	0.00	0.00	0.00
5,300.0	13.01	136.84	5,184.3	-752.6	705.7	1,031.7	0.00	0.00	0.00
5,400.0	13.01	136.84	5,281.7	-769.0	721.1	1,054.2	0.00	0.00	0.00
5,500.0	13.01	136.84	5,379.1	-785.4	736.5	1,076.7	0.00	0.00	0.00
5,600.0	13.01	136.84	5,476.6	-801.8	751.9	1,099.2	0.00	0.00	0.00
5,700.0	13.01	136.84	5,574.0	-818.2	767.3	1,121.7	0.00	0.00	0.00
5,800.0	13.01	136.84	5,671.4	-834.6	782.6	1,144.2	0.00	0.00	0.00
5,900.0	13.01	136.84	5,768.9	-851.1	798.0	1,166.7	0.00	0.00	0.00
6,000.0	13.01	136.84	5,866.3	-867.5	813.4	1,189.2	0.00	0.00	0.00
6,100.0	13.01	136.84	5,963.8	-883.9	828.8	1,211.7	0.00	0.00	0.00
6,200.0	13.01	136.84	6,061.2	-900.3	844.2	1,234.2	0.00	0.00	0.00
6,300.0	13.01	136.84	6,158.6	-916.7	859.6	1,256.7	0.00	0.00	0.00
6,400.0	13.01	136.84	6,256.1	-933.1	875.0	1,279.2	0.00	0.00	0.00
6,500.0	13.01	136.84	6,353.5	-949.6	890.4	1,301.7	0.00	0.00	0.00
6,600.0	13.01	136.84	6,450.9	-966.0	905.8	1,324.2	0.00	0.00	0.00
6,700.0	13.01	136.84	6,548.4	-982.4	921.2	1,346.7	0.00	0.00	0.00
6,800.0	13.01	136.84	6,645.8	-998.8	936.6	1,369.2	0.00	0.00	0.00
<b>Williams Fork</b>									
6,858.7	13.01	136.84	6,703.0	-1,008.4	945.6	1,382.4	0.00	0.00	0.00
6,900.0	13.01	136.84	6,743.2	-1,015.2	952.0	1,391.7	0.00	0.00	0.00
7,000.0	13.01	136.84	6,840.7	-1,031.6	967.4	1,414.2	0.00	0.00	0.00
7,100.0	13.01	136.84	6,938.1	-1,048.1	982.8	1,436.7	0.00	0.00	0.00
7,200.0	13.01	136.84	7,035.5	-1,064.5	998.2	1,459.3	0.00	0.00	0.00
<b>Drop 3° / 100'</b>									
7,238.6	13.01	136.84	7,073.2	-1,070.8	1,004.1	1,468.0	0.00	0.00	0.00
7,300.0	11.17	136.84	7,133.2	-1,080.2	1,012.9	1,480.8	3.00	-3.00	0.00
7,400.0	6.17	136.84	7,231.8	-1,092.4	1,024.4	1,497.6	3.00	-3.00	0.00
7,500.0	5.17	136.84	7,331.1	-1,100.9	1,032.3	1,509.2	3.00	-3.00	0.00
7,600.0	2.17	136.84	7,430.8	-1,105.6	1,036.7	1,515.6	3.00	-3.00	0.00
<b>EOD @ Vertical - TOG</b>									
7,672.2	0.00	0.00	7,503.0	-1,106.6	1,037.6	1,516.9	3.00	-3.00	-189.61
7,700.0	0.00	0.00	7,530.8	-1,106.6	1,037.6	1,516.9	0.00	0.00	0.00
7,800.0	0.00	0.00	7,630.8	-1,106.6	1,037.6	1,516.9	0.00	0.00	0.00
7,900.0	0.00	0.00	7,730.8	-1,106.6	1,037.6	1,516.9	0.00	0.00	0.00
8,000.0	0.00	0.00	7,830.8	-1,106.6	1,037.6	1,516.9	0.00	0.00	0.00
8,100.0	0.00	0.00	7,930.8	-1,106.6	1,037.6	1,516.9	0.00	0.00	0.00
8,200.0	0.00	0.00	8,030.8	-1,106.6	1,037.6	1,516.9	0.00	0.00	0.00
8,300.0	0.00	0.00	8,130.8	-1,106.6	1,037.6	1,516.9	0.00	0.00	0.00
8,400.0	0.00	0.00	8,230.8	-1,106.6	1,037.6	1,516.9	0.00	0.00	0.00
8,500.0	0.00	0.00	8,330.8	-1,106.6	1,037.6	1,516.9	0.00	0.00	0.00
8,600.0	0.00	0.00	8,430.8	-1,106.6	1,037.6	1,516.9	0.00	0.00	0.00
8,700.0	0.00	0.00	8,530.8	-1,106.6	1,037.6	1,516.9	0.00	0.00	0.00
8,800.0	0.00	0.00	8,630.8	-1,106.6	1,037.6	1,516.9	0.00	0.00	0.00
<b>Cameo</b>									
8,872.2	0.00	0.00	8,703.0	-1,106.6	1,037.6	1,516.9	0.00	0.00	0.00
8,900.0	0.00	0.00	8,730.8	-1,106.6	1,037.6	1,516.9	0.00	0.00	0.00
9,000.0	0.00	0.00	8,830.8	-1,106.6	1,037.6	1,516.9	0.00	0.00	0.00
9,100.0	0.00	0.00	8,930.8	-1,106.6	1,037.6	1,516.9	0.00	0.00	0.00



Well Planning Report



<b>Database:</b>	EDM 5000.1 Single User Db	<b>Local Co-ordinate Reference:</b>	Well CC 0697-03-14E
<b>Company:</b>	Laramie Energy, LLC	<b>TVD Reference:</b>	well @ 8458.0usft (30' RKB)
<b>Project:</b>	Garfield County, CO	<b>MD Reference:</b>	well @ 8458.0usft (30' RKB)
<b>Site:</b>	CC 0697-03-07 Pad	<b>North Reference:</b>	True
<b>Well:</b>	CC 0697-03-14E	<b>Survey Calculation Method:</b>	Minimum Curvature
<b>Wellbore:</b>	Wellbore #1		
<b>Design:</b>	Design #2		

Planned Survey										
Measured Depth (usft)	Inclination (°)	Azimuth (°)	Vertical Depth (usft)	+N/-S (usft)	+E/-W (usft)	Vertical Section (usft)	Dogleg Rate (°/100usft)	Build Rate (°/100usft)	Turn Rate (°/100usft)	
9,200.0	0.00	0.00	9,030.8	-1,106.6	1,037.6	1,516.9	0.00	0.00	0.00	
9,300.0	0.00	0.00	9,130.8	-1,106.6	1,037.6	1,516.9	0.00	0.00	0.00	
9,400.0	0.00	0.00	9,230.8	-1,106.6	1,037.6	1,516.9	0.00	0.00	0.00	
9,500.0	0.00	0.00	9,330.8	-1,106.6	1,037.6	1,516.9	0.00	0.00	0.00	
<b>Base Cameo Coal</b>										
9,532.2	0.00	0.00	9,363.0	-1,106.6	1,037.6	1,516.9	0.00	0.00	0.00	
<b>Rollins</b>										
9,572.2	0.00	0.00	9,403.0	-1,106.6	1,037.6	1,516.9	0.00	0.00	0.00	
9,600.0	0.00	0.00	9,430.8	-1,106.6	1,037.6	1,516.9	0.00	0.00	0.00	
9,700.0	0.00	0.00	9,530.8	-1,106.6	1,037.6	1,516.9	0.00	0.00	0.00	
9,800.0	0.00	0.00	9,630.8	-1,106.6	1,037.6	1,516.9	0.00	0.00	0.00	
<b>TD @ 9822.2' MD / 9653.0' TVD</b>										
9,822.2	0.00	0.00	9,653.0	-1,106.6	1,037.6	1,516.9	0.00	0.00	0.00	

Design Targets									
Target Name	Dip Angle (°)	Dip Dir. (°)	TVD (usft)	+N/-S (usft)	+E/-W (usft)	Northing (usft)	Easting (usft)	Latitude	Longitude
PBHL - CC 0697-03-14E	0.00	0.00	9,653.0	-1,106.6	1,037.6	1,638,448.55	2,238,407.37	39 555239	-108 201436
- hit/miss target									
- Shape									
- plan hits target center									
- Circle (radius 50.0)									

Casing Points				
Measured Depth (usft)	Vertical Depth (usft)	Name	Casing Diameter (")	Hole Diameter (")
2,530.0	2,485.3	9 5/8"	9-5/8	12-1/4

Formations						
Measured Depth (usft)	Vertical Depth (usft)	Name	Lithology	Dip (°)	Dip Direction (°)	
4,703.4	4,603.0	G' Sand				
6,858.7	6,703.0	Williams Fork				
7,672.2	7,503.0	TOG				
8,872.2	8,703.0	Cameo				
9,532.2	9,363.0	Base Cameo Coal				
9,572.2	9,403.0	Rollins				



Well Planning Report



<b>Database:</b>	EDM 5000.1 Single User Db	<b>Local Co-ordinate Reference:</b>	Well CC 0697-03-14E
<b>Company:</b>	Laramie Energy, LLC	<b>TVD Reference:</b>	well @ 8458.0usft (30' RKB)
<b>Project:</b>	Garfield County, CO	<b>MD Reference:</b>	well @ 8458.0usft (30' RKB)
<b>Site:</b>	CC 0697-03-07 Pad	<b>North Reference:</b>	True
<b>Well:</b>	CC 0697-03-14E	<b>Survey Calculation Method:</b>	Minimum Curvature
<b>Wellbore:</b>	Wellbore #1		
<b>Design:</b>	Design #2		

Plan Annotations				
Measured Depth (usft)	Vertical Depth (usft)	Local Coordinates		Comment
		+N/-S (usft)	+E/-W (usft)	
500.0	500.0	0.0	0.0	KOP (Build 3' / 100')
933.5	929.8	-35.7	33.5	EOB @ 13.01° Inc. / 136.84° Azm
7,238.6	7,073.2	-1,070.8	1,004.1	Drop 3' / 100'
7,672.2	7,503.0	-1,106.6	1,037.6	EOD @ Vertical
9,822.2	9,653.0	-1,106.6	1,037.6	TD @ 9822.2' MD / 9653.0' TVD